



Department of  
**Finance and  
Personnel**  
[www.dfpni.gov.uk](http://www.dfpni.gov.uk)

**Labour Market**

**Statistics Bulletin**

# Women in Northern Ireland

**September 2011**



From the 1st April 2011, the responsibility for the collection of data and production of official labour market and economic statistics transferred from the Department of Enterprise, Trade and Investment to the Northern Ireland Statistics and Research Agency (DFP). This transfer mirrored the position in Great Britain where most business surveys and labour market data collection and statistical production have been transferred from the departments with policy responsibilities to the Office for National Statistics (ONS). However, it is important to note that there are no planned changes to the production of economic and labour market statistical publications and outputs as a result of the transfer.

For further information please contact:

Gerard Colgan  
Economic and Labour Market Statistics Branch, Room 110,  
Netherleigh, Massey Avenue, Belfast BT4 2JP

Tel: (028) 9052 9523  
Fax: (028) 9052 9658  
Textphone: (028) 9052 9304  
Email: [gerard.colgan@dfpni.gov.uk](mailto:gerard.colgan@dfpni.gov.uk)

## **A NATIONAL STATISTICS PUBLICATION**

The United Kingdom Statistics Authority has designated these statistics as National Statistics, in accordance with the Statistics and Registration Service Act 2007 and signifying compliance with the Code of Practice for Official Statistics.

Designation can be broadly interpreted to mean that the statistics:

- meet identified user needs;
- are well explained and readily accessible;
- are produced according to sound methods, and
- are managed impartially and objectively in the public interest.

Once statistics have been designated as National Statistics it is a statutory requirement that the Code of Practice shall continue to be observed.

Northern Ireland Statistics &  
Research Agency

# **Women in Northern Ireland**

September 2011

Crown Copyright

# Contents

**1**

Executive Summary.  
**Pages 1-3**

**2**

Women in the Labour  
Force.  
**Pages 4-5**

**3**

Women in  
Employment.  
**Pages 6-11**

**4**

Women in  
Unemployment.  
**Pages 12-14**

**5**

Economic Inactivity.  
**Pages 15-16**

**6**

Childcare provision  
and Income support.  
**Pages 17-18**

**7**

Educational  
Standards.  
**Pages 19-21**

**8**

Politics and Public  
life.  
**Page 22**

**9**

Women into  
Business  
**Pages 23**

**10**

Technical Notes  
**Pages 24-25**

# Executive Summary

# 1

All data in this publication is taken from the Labour Force Survey unless otherwise sourced.

## Employment

Despite the recent economic downturn, women in Northern Ireland (NI) are experiencing historically high levels of employment – latest figures show that there were an estimated 378,000 women in employment in the period April - June 2011. This figure has increased by an estimated 66% compared with the equivalent estimate for 1984.

However, despite narrowing considerably in recent years the NI employment rate for those females aged 16-64, (63.3%) is still 2.0 percentage points lower than the rate in Great Britain (GB) (65.4%).

The female 16-64 employment rate (63.3%) in NI increased by 2.0 percentage points during the last year and this increase was greater than the corresponding rise in the male rate (1.2 percentage points to 72.3%). In contrast, the female employment rate in GB showed a slight fall over the year (-0.1 percentage points), whilst the male employment rate rose by 0.2 percentage points.

Women now comprise 47.2% of those aged 16-64 in employment in NI, which is slightly higher than the equivalent figure of 46.6% in GB.

There are notable gender differences in employment rates and in the nature of employment between the sexes in NI. Seventy-two per cent of males, aged 16-64, are in employment compared with 63% of females. This represents a narrowing of the gap between female employment rates and those of males compared to five years ago (61.7% for females and 74.5% for males).

## Earnings (source: Annual Survey of Hours and Earnings)

The ratio between male and female full-time median hourly earnings excluding overtime has increased to 100.1% (from 96.3% in 2009). Both male and female hourly earnings were estimated at £10.9 in April 2010. Female full-time hourly earnings as a percentage of male hourly earnings continue to be higher in NI (100.1%), compared to the UK as a whole (89.8%).

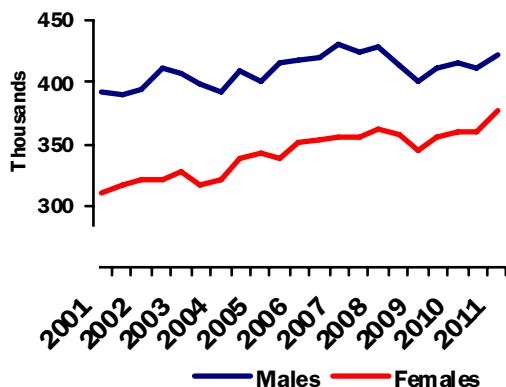
## Unemployment

An estimated 23,000 women were unemployed in NI at April - June 2011, with an associated unemployment rate of 5.6%. The male unemployment rate is 8.7% and is 3.1 percentage points above the female unemployment rate. The gap between male and female unemployment rates has increased from the same period five years ago, when there was a 2.4 percentage point difference.

In July 2011, 17,100 females in Northern Ireland were claiming unemployment related benefits - this represented an increase of 3,200 during the last year. Females accounted for 84% of the annual increase in unemployed claimants during the year to July 2011. However, the number of female claimants continues to be considerably smaller than the number of male claimants (43,300). [Source: Claimant Count]

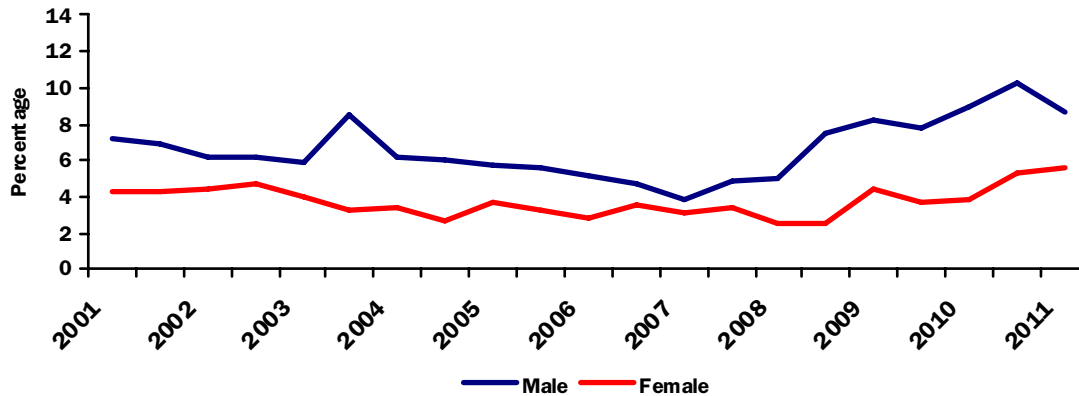
Number in Employment (16+)  
2001-2011 (Quarter 2)

Figure 1



## NI Unemployment rates (16+ ) 2001-2011 (Quarter 2)

Figure 2

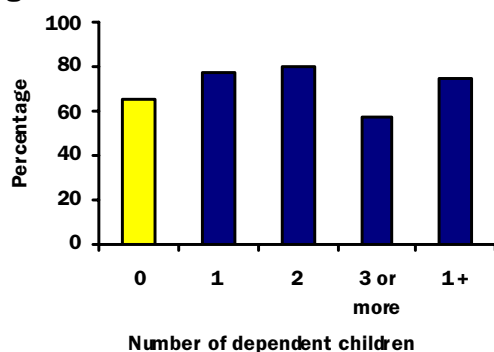


### Economic Activity

In NI, a total of 401,000 women were economically active in April - June 2011 – an increase of 27,000 during the last year. However, the female working age economic activity rate here of 67.2% was 3.3 percentage points lower than that in GB (70.5%). At 67.2% the working age economic activity rate for NI females was 12.1 percentage points lower than that for NI males (79.3%). The difference in economic activity rate between males and females is less than that of five years ago when the difference was 15.1 percentage points.

### NI Economic activity Rate (Working age) by No. of Dependent Children, April-June 2011

Figure 3



Women<sup>1</sup>, aged 16-64, with dependent children have a 9.1 percentage point higher economic activity rate than those without dependent children, compared to a 3.1 percentage point difference five years ago. The economic activity rate for women with no dependent children has increased by 2.4 percentage points during the last five years, while the rate for those with dependent children has increased by 8.4 percentage points.

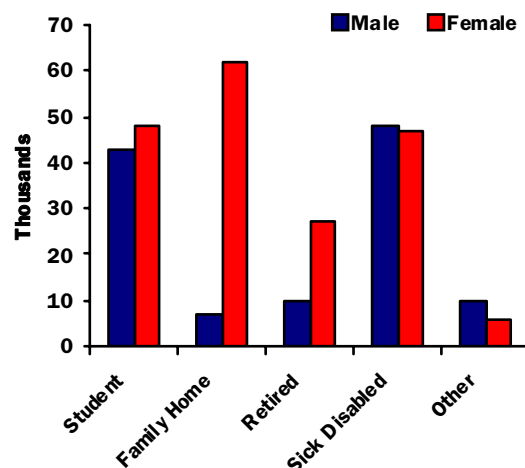
<sup>1</sup> Analysis is based on the head or partner of the head of family unit only. See Section 2 for details.

### Economic Inactivity

At April – June 2011 there were 191,000 women, aged 16-64, who were economically inactive in Northern Ireland, with a resulting inactivity rate of 32.8% (29.5% in GB). Fourteen per cent of these economically inactive women (27,000) wanted a job (22% in GB), but did not satisfy the criteria of availability for work and actively seeking work to be classified as unemployed.

### Reasons for Economic Inactivity, NI (16-64), April - June 2011

Figure 4



**Childcare provision (source: Department of Health Social Services and Public Safety)**

In 2010 there were 48,623 day-care places for children aged under twelve in Northern Ireland. This was 3% higher than the level recorded in 2002.

**Educational Standards (source: Department of Education)**

In 2009/10 girls left school with higher levels of academic qualifications than boys. 78% of girls left school with at least 5 GCSE grades A\*-C, compared with 65% of boys. Similarly, 61% of girls left school with two or more A-levels, compared to 45% of boys.

**Politics and Public Life (source: Office of the First Minister and Deputy First Minister)**

Women tend to be under represented in politics and public life. Approximately one in five MLA's in Northern Ireland are women and only 23.5% of councillors in local government districts are women. Northern Ireland has 4 elected female MPs, and 2 female MEPs.

**Women in Business (source: Invest NI)**

In 2010 the female level of entrepreneurial activity in Northern Ireland was 3.3% compared to 9.6% for males.

# Women in the Labour Force

## 2

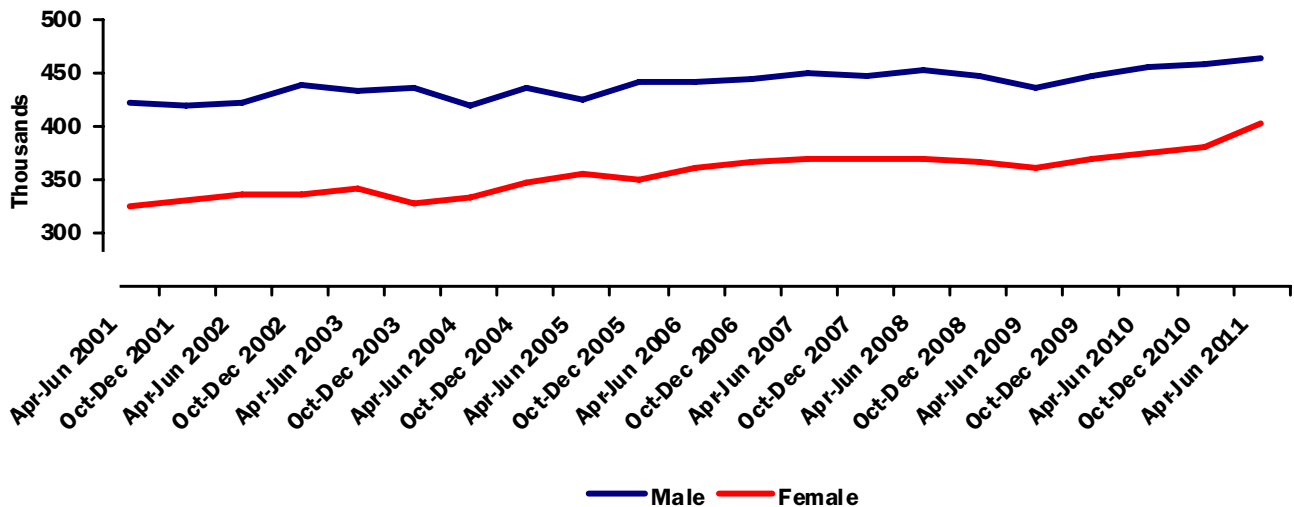
### Women in the labour force (source: Labour Force Survey)

Those in employment or unemployed are termed economically active and together make up the labour force. (See Section 10 for full definitions). At April-June 2011;

- An estimated 401,000 women (16+) are economically active. This compares with 463,000 men. [14.2m women and 16.6m men in GB.]

- For women the number of economically active has increased by 53% from 1984 compared with a 16% increase for males. [This compares with an increase in GB of 29% for females and an increase of 7% for males.]
- Married women make up 26% of the labour force, up 3 percentage points since 1984. [In GB, 24% in 2011 compared with 26% in 1984].

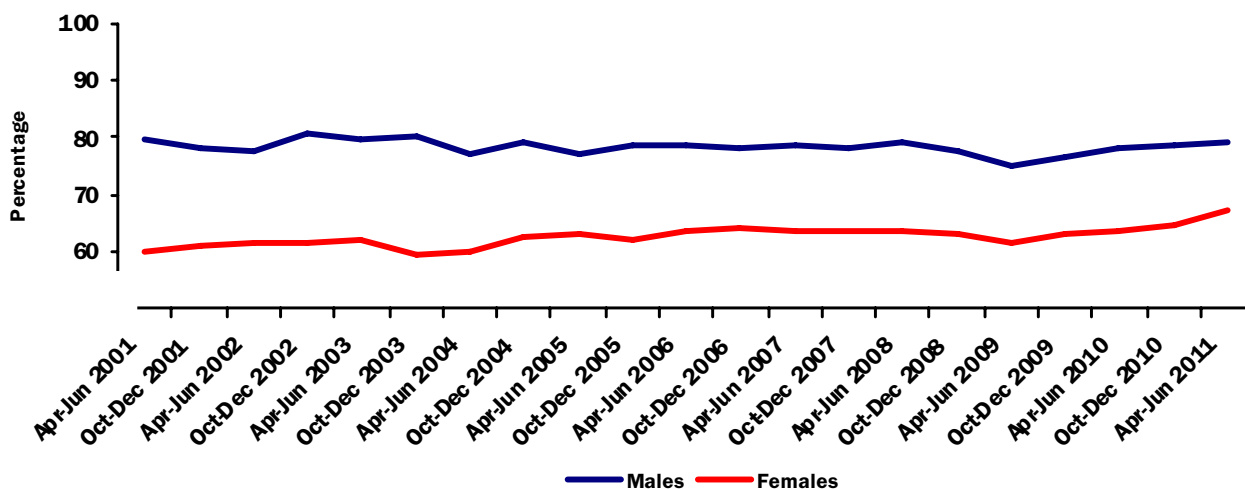
**Economic Activity (16+) 2001-2011**  
Figure 5



- For women aged 16-64, the activity rate is 67% compared to 79% for men aged 16-64. [71% compared to 83% in GB.]
- The economic activity rate for those women aged 16 – 64, has increased by 3.7 percentage points over the last 5 years in NI and has increased by 3.4 percentage points in the last year alone.
- The economic activity rate for men has increased by 0.7 percentage points over the last 5 years and increased by 1.1 percentage points over the last year.

## Economic Activity rates (16 - 64 ) 2001-2011

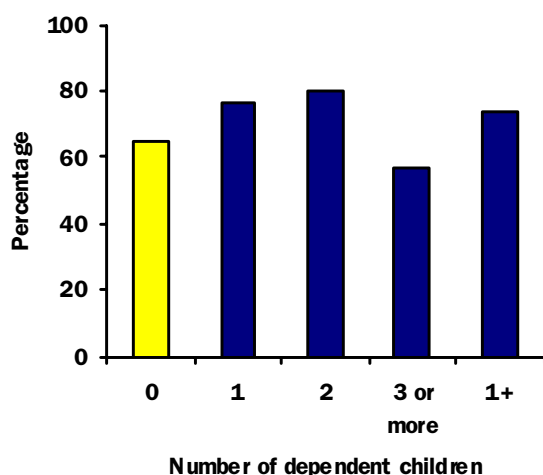
Figure 6



- The economic activity rate for women, aged 16 – 64, with dependent children is 74%, compared with 65% for those without children. [73% and 72% in GB.]
- The economic activity rate is lower for women with three or more dependent children (57%) than those with one or two dependent children, which are 77% and 80% respectively.
- Economic activity rates for female heads of family were found to be influenced by the age of the youngest dependent child. When the youngest dependent child was aged 0-4 the activity rate (75%) was 4 percentage points lower than the rate for the 11-15 (78%) age group. [In GB the rates are 63% and 82% respectively.]

### Economic Activity rate<sup>1</sup> (16 - 64) by No. of dependent children April-June 2011

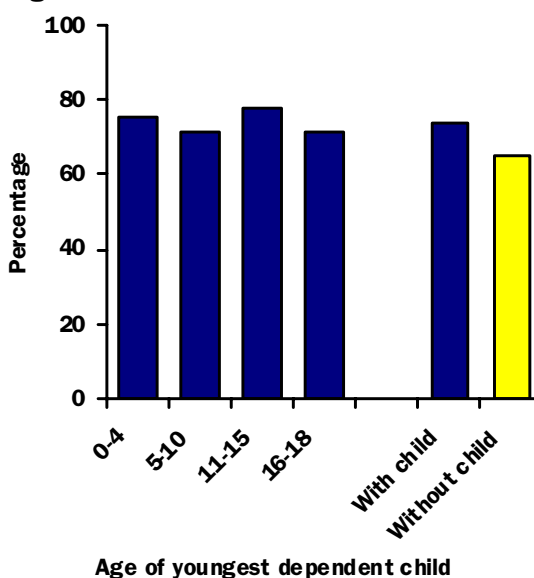
Figure 7



<sup>1</sup> The analysis on the effect of dependent children (under 19) on the economic activity rates of females is based on the head or partner of the head of family unit only. It does not include family members who are of working age but who do not have parental responsibilities such as an elder sibling.

### Economic Activity rates (16 - 64) by age of youngest dependent child April-June 2011

Figure 8



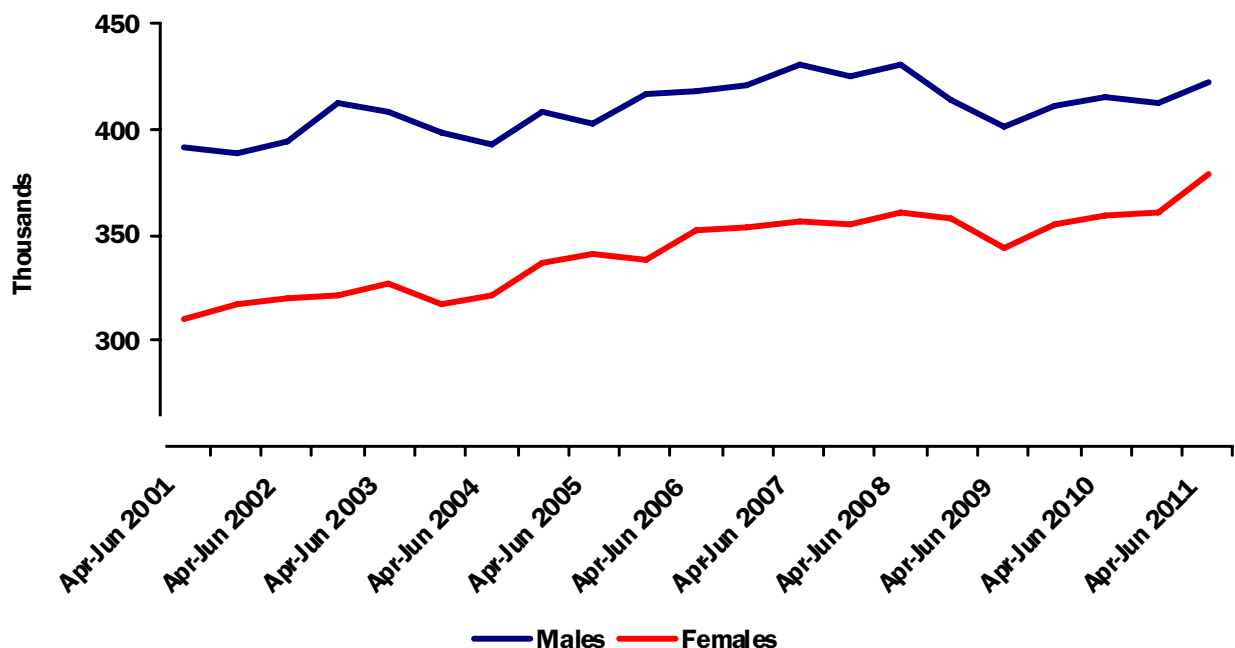
# Women in Employment

## 3

### Women in Employment (sources: Labour Force Survey, Quarterly Employment Survey and Annual Survey of Hours and Earnings)

- Despite the recent fall in employment during the economic downturn, the number of women in employment (16+) has increased by an estimated 66% from 228,000 in 1984 to 378,000 in April - June 2011. This compares with an increase of 30% for men. [In GB the increase was 35% for women and 11% for men.]
- 47% of those currently in employment are women, compared to 41% in 1984. [46% and 41% respectively in GB.]
- The 378,000 women in employment consist of 346,000 employees (91%), 29,000 self-employed (8%) and a small number on government training and employment schemes or unpaid family workers. In GB 91% of women in employment are employees, 9% are self-employed with less than 1% on government training and employment schemes or unpaid family workers.

**Numbers in Employment (16+) 2001-2011**  
Figure 9



- The employment rate for women aged 16 to 64 has increased by 1.6 percentage points over the last 5 years and by 2.0 percentage points over the last year to 63.3%. The corresponding male rate (72.3%) fell by 2.3 percentage points over the last 5 years, but rose by 1.2 percentage points over the last year.
- The working age employment rate for women in GB has decreased by 1.6 percentage points over the last 5 years and by 0.1 percentage points over the last year to 65.4%. The corresponding male rate (75.6%) fell by 2.9 percentage points over the last 5 years, but increased by 0.2 percentage points over the year to April – June 2011.

**Types of Employment, April - June 2011**  
**Figure 10**



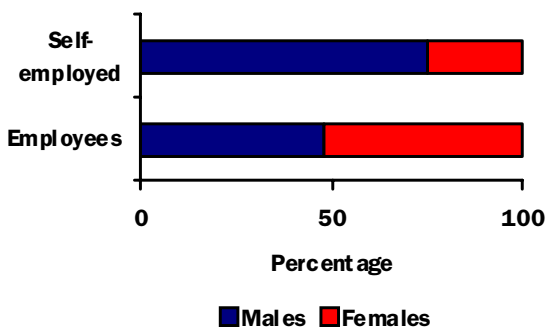
\* Sample size too small for a reliable estimate

- Women account for 52% of all employees, but only 25% of the total self-employed. [In GB the figures are 49% and 29% respectively.]
- Employer based surveys estimate that 52.2% of all employee jobs are filled by women. (source June 2011 Quarterly Employment Survey).

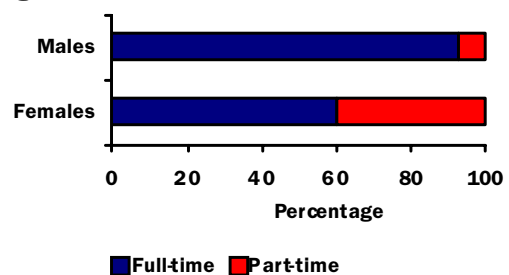
- The number of female part-time employees is up 87% since 1984, while the number of female full-time employees has risen by 47%.

[In GB increases have been 28% for part-time and 37% for full-time female employees.]

**Types of Employment by gender, April - June 2011**  
**Figure 11**

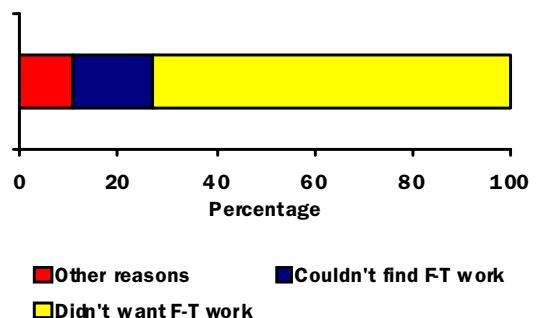


**Full-time/Part-time split of Employees, April - June 2011**  
**Figure 12**



- Seventy-three per cent of female employees who work part-time say they do not want a full-time job. [74% of females in GB.]

**Reason for Female Employees working part-time, April - June 2011**  
**Figure 13**



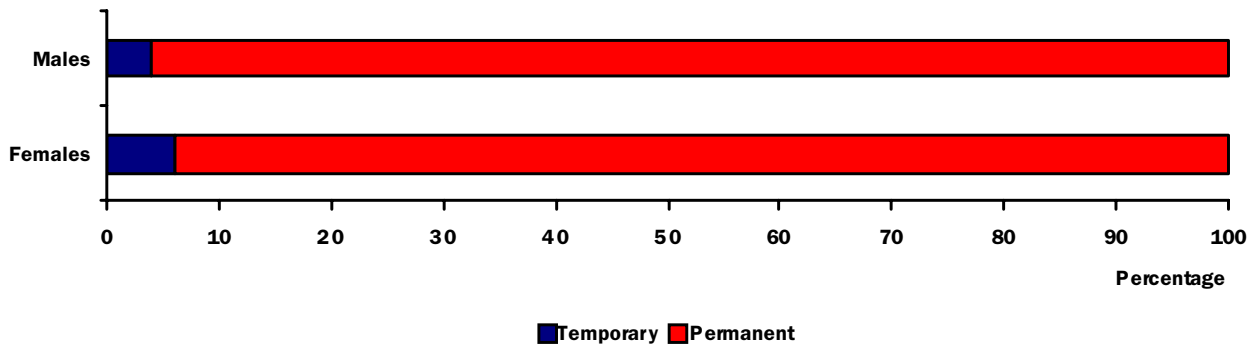
"Other reasons" comprise being a student, illness or disability.

**Working Patterns of Women**

- Six per cent of women in employment work at or from home. [10% cent in GB.]
- Forty per cent of female employees work part-time compared to seven per cent of male employees. [42% compared with 12%, respectively, in GB.]
- Eighty-five per cent of part-time employees are women. [77% in GB.]

**Permanent/Temporary Employees, April - June 2011**

**Figure 14**



- Six per cent of female and four per cent of male employees are temporary. [In GB seven per cent of females and six per cent of males are temporary.]
- Forty-two per cent of female employees and nine per cent of male employees are not in full-time permanent jobs. [45% and 16% in GB.]

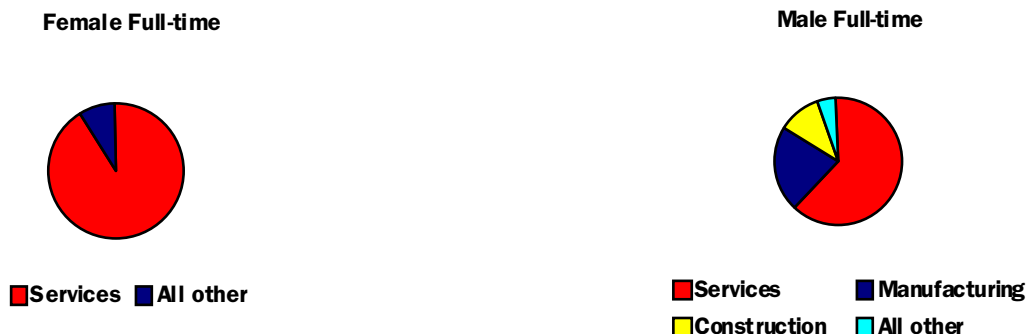
**Industrial and Occupational Distribution of Women in Employment**

- Ninety-three per cent of female employees (96% for part-time and 91% for full-time) work in the service sector. This compares with 63% for male employees. [In GB 92% of female employees (95% for part-time and 89% for full-time) work in the service sector.]

- Of all female full-time employees, 53% are employed in the public administration, education and health service sectors. This compares with 22% of males. [In GB 49% for females and 19% for males.]
- The other main work areas for female full-time employees in the Service sector are banking & finance services (15%) and distribution, hotel & restaurants (17%). For males the figures are 11% and 17% respectively. [In GB, 16% for females and 17% for males in banking & finance services. For distribution, hotel & restaurants, the figures were 15% for females and 16% for males].
- Six per cent of female full-time employees work in manufacturing compared to 23% of men. [In GB 7% for females and 17% for males.]

**Employees by Industry Sector, April - June 2011**

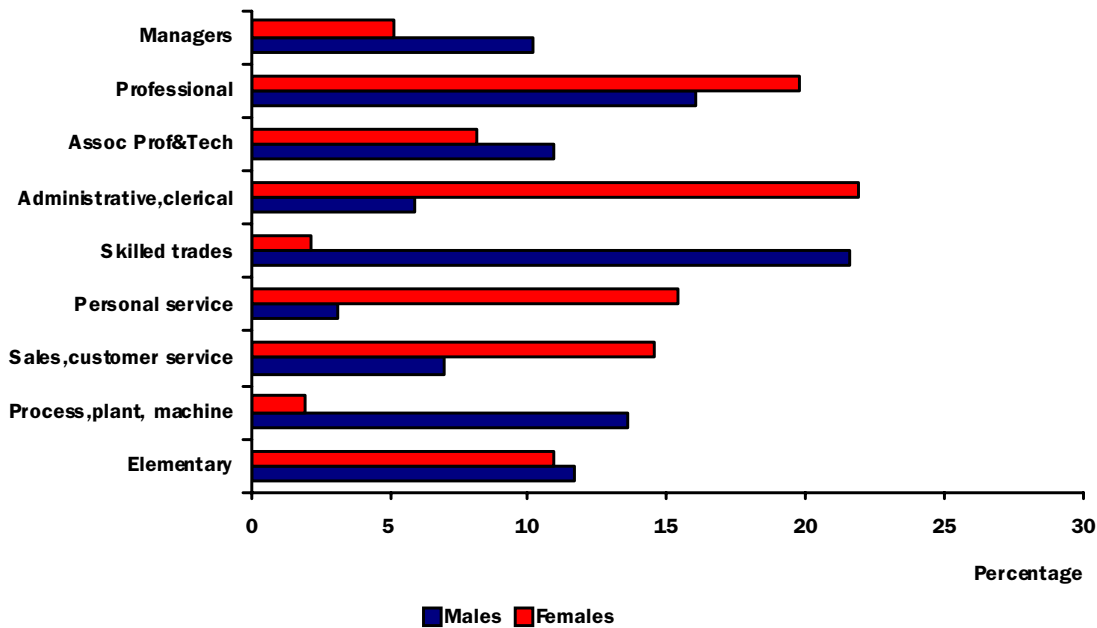
**Figure 15**



“All other” comprises Agriculture, forestry and fishing, Energy and water, Construction and Manufacturing.

- Thirty-five per cent of all managers and/or senior officials are women. [33% in GB.]
- Eighty per cent of all those employed in administrative and secretarial occupations are women. [77% in GB.]

**Occupation of male and female employees, April - June 2011**  
**Figure 16**



- Five per cent of female employees are managers and/or senior officials, compared with 10% of men. [In GB six per cent of women and 12% of men.]
- Twenty-two per cent of female employees are in administrative and secretarial occupations, compared with six per cent of men. [In GB 20% of women and six per cent of men.]

**Job-related training**

- Seventeen thousand female employees of working age (five per cent) had received some job-related training in the past four weeks compared with five per cent of men. [In GB 1.8m women (15%) compared to 13% for men.]

**Earnings (source: Annual Survey of Hours and Earnings – ASHE)**

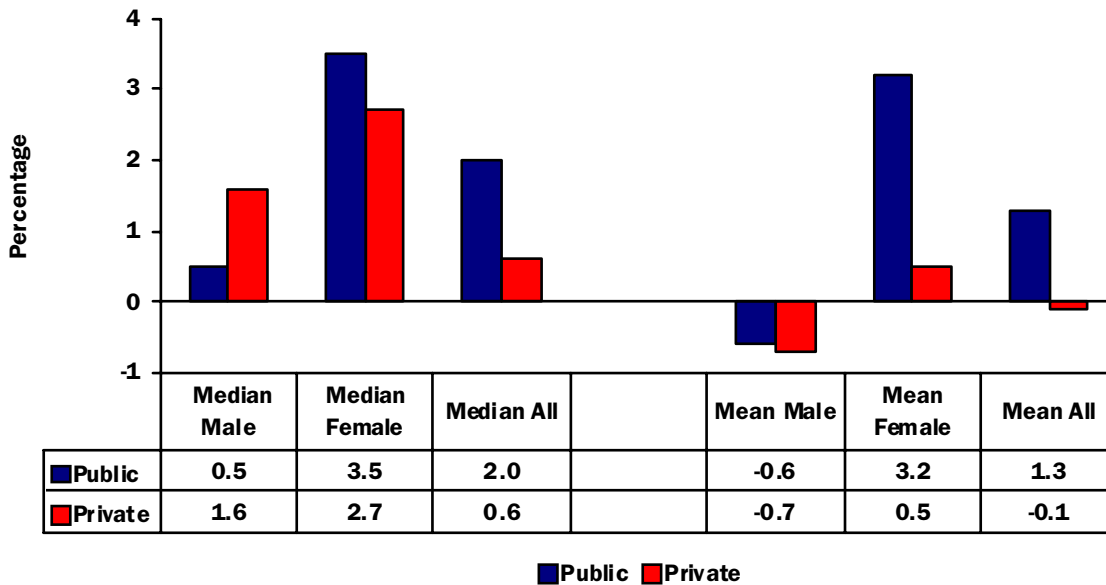
**Comparison of Male/Female Earnings**

- The median gross weekly wage for full-time females at April 2010 in NI was £412.2 while for full-time males the figure was £460.0.
- The ratio between male and female full-time median hourly earnings excluding overtime has increased to 100.1% (from 96.3% in 2009), which represents a narrowing of the full-time gender pay gap.
- Female full-time hourly earnings as a percentage of male hourly earnings continue to be higher in NI (100.1%) than in the UK as a whole (89.8%).

**Comparison of Public/Private Sector Earnings**

- In NI, median earnings for women working full-time were higher in the public sector (£516.1) than in the private sector (£320.9).
- Earnings of full-time female employees in both the public sector (3.5%) and the private sector (2.7%) increased over the year.
- When the mean is used instead of the median as a measure of the average, the change is an increase of 3.2% in the public sector compared to a 0.5% increase in the private sector.

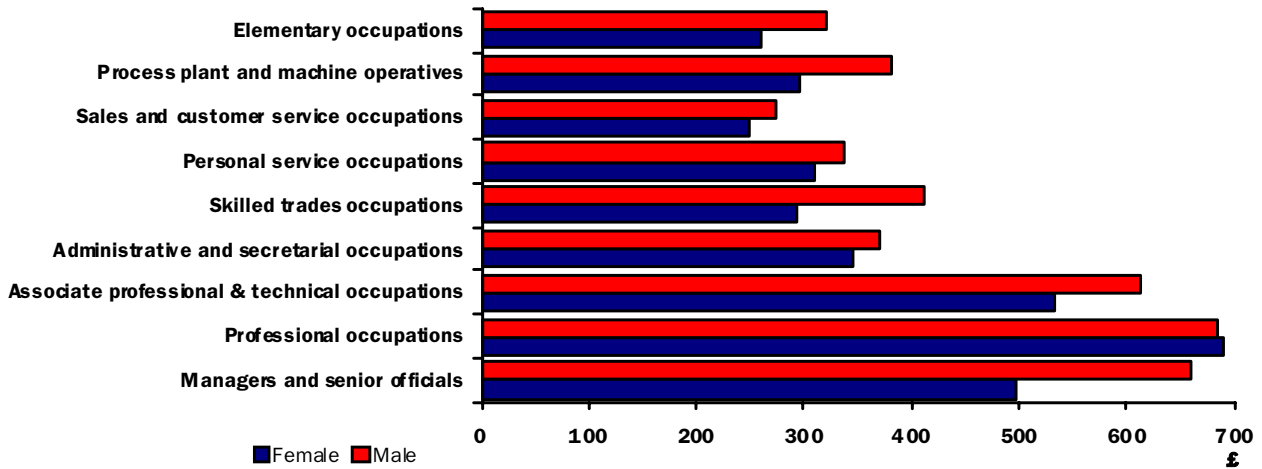
**Percentage Increases/Decreases in Median and Mean Gross Weekly Earnings for Full-time Employees between April 2009 and 2010**  
**Figure 17**



## Median Gross Weekly Pay by Occupation

### Average Full Time Gross weekly Earnings by Occupational group in NI, April 2010

Figure 18

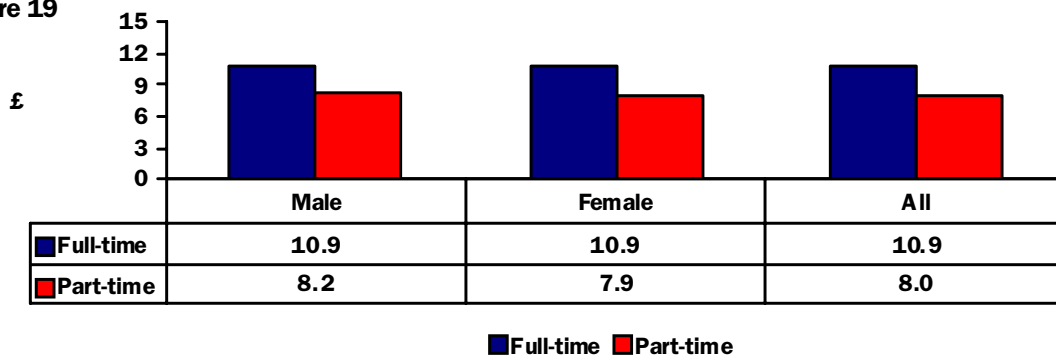


## Full-time/Part-time Comparisons of hourly rate excluding overtime

- Median female hourly earnings excluding overtime of part-time workers were 73.2% of full-time workers.

## Median Gross Hourly Earnings excluding overtime by full/part-time and gender in NI, April 2010

Figure 19



# Women in Unemployment

## 4

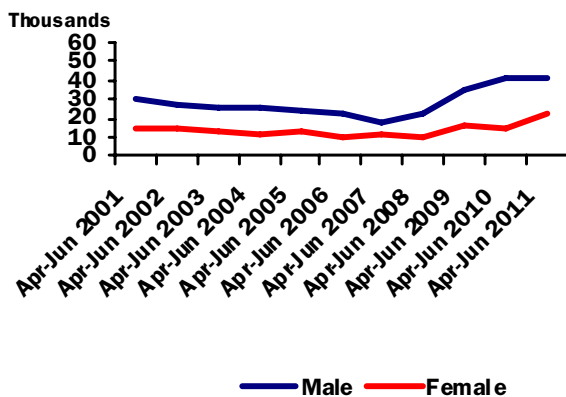
### WOMEN IN UNEMPLOYMENT (sources: Labour Force Survey and Claimant Count)

The Labour Force Survey defines unemployed persons as persons without a job, who are available to start work within two weeks and have either looked for work in the previous four weeks, or, are waiting to start a job they have already obtained.

- Twenty-three thousand (23,000) women (16+) are currently unemployed compared with 41,000 men. [1,010,000 women and 1,399,000 men in GB.]
- Since 1984 the numbers unemployed have decreased by 34% for women and 48% for men. [In GB a decrease of 20% for women and 24% for men.]

#### Unemployed (16+) 2001-2011

Figure 20



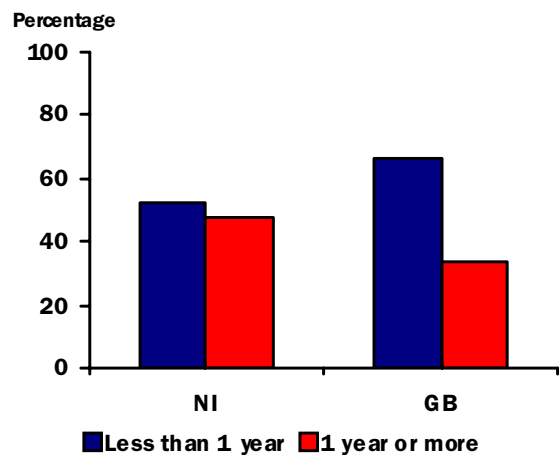
- The unemployment rate (16+) (unemployed as a percentage of the economically active) is 5.6% for women compared with 8.7% for men. [In GB 7.1% for women and 8.4% for men.]

- The unemployment rate for women of working age is 5.8%. [7.3% in GB.]
- Overall, 3.1% of females aged 16+ are unemployed compared to 5.9% of males. [4.1% and 5.9% in GB.]
- In NI, 67% of unemployed females were short-term unemployed compared with 44% of men.
- Thirty thousand people or 48% of all those unemployed were long-term unemployed (one year or more) at April – June 2011.

#### Unemployment by Duration (all)

April - June 2010

Figure 21



**Claimant Count (source: Claimant Count)**

Claimant Count figures are derived from records of claimants at Jobs and Benefits Offices (JBOs). The term claimant is used to include those who claim Jobseekers Allowance and national insurance credits. The figures include the severely disabled claimants, but exclude students seeking vacation work and the temporarily stopped.

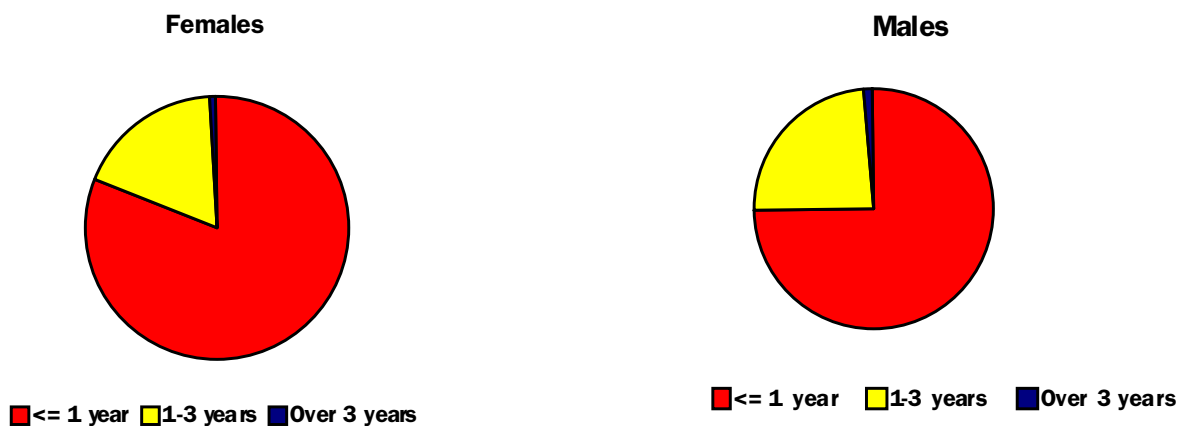
- Using this measure, 17,100 or 4.3% of women in the workforce claimed unemployment related benefits compared with 43,300 or 8.9% of men in July 2011. [In GB 495,600 or 3.4% for women and 1,008,000 or 6.0% for men.]

- The July 2011 rate of 4.3% was higher than the previous month's rate of 4.2% and compares to 3.5% one year ago. [In GB the July 2011 rate of 3.4% was higher than the previous month's rate of 3.3% and compares to 2.8% one year ago.]
- In July 2011, 81.2% of women out of work and claiming unemployment related benefits had been unemployed for up to one year, 18.3% for over one year but less than three years and 0.5% for three years or more. In contrast the figures for men are 74.6%, 24.3% and 1.1% respectively. [In GB, 88.5%, 10.8% and 0.7% for women, compared with 84.2%, 14.3% and 1.5% for men.]

**Table 1 Claimant Count (seasonally adjusted) July 2011**

Number of Persons Claiming this month	Change since Last Month	Change since Last Year	% of Workforce			
			This Month	Last Month	Last Year	
<b>Total</b>	60,400	600	3,800	6.8	6.8	6.4
<b>Males</b>	43,300	200	600	8.9	8.9	8.8
<b>Females</b>	17,100	400	3,200	4.3	4.2	3.5

**Claimant Count by Duration, July 2011**  
Figure 23

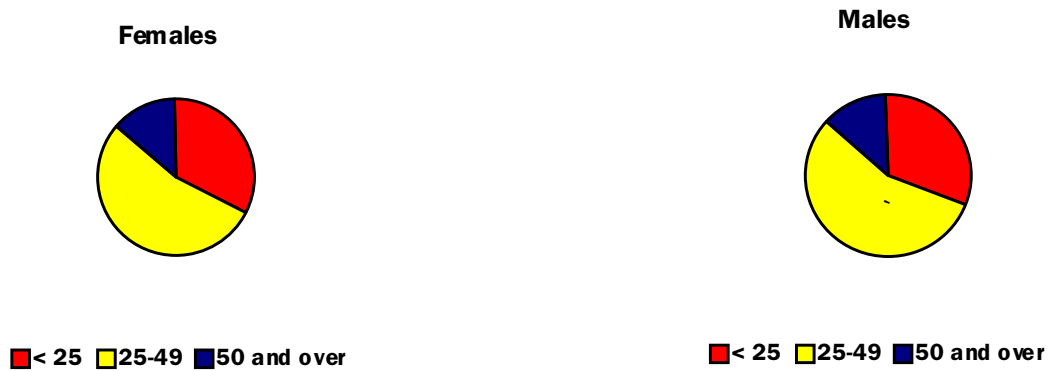


- 32.5% of women claimants are aged under 25, 53.3% are aged 25 to 49 and 14.2% are aged 50 and over. Of male claimants, 31.0% are aged under 25, 55.8% are aged 25 to 49 and

13.2% are aged 50 or over. [In GB 30.2%, 54.6% and 15.3% for women, compared with 29.4%, 55.6% and 15.0% for men.]

## Claimant Count by Age group July 2011

Figure 24



Note that as from July 1999, claimant count data by age and duration for all UK regions and sub-regions (down to ward level) **cover computerised claims only**. A small percentage of claims (currently around 1%) are processed clerically in Social Security Offices and, whereas previously they had been included in age and duration tables, they are now **excluded** from the figures given. Therefore, age and duration data from July 1999 onwards are not directly comparable with earlier data.

# Economic Inactivity

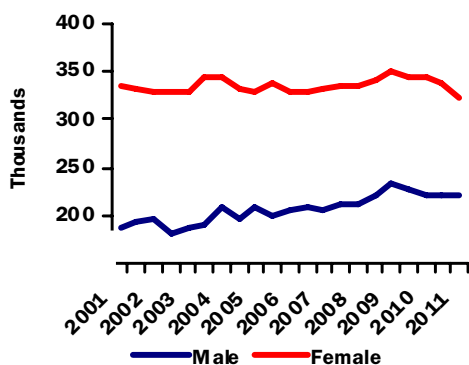
# 5

## Source: Labour Force Survey

The Economically Inactive are those neither in employment nor unemployed. In the period April-June 2011; 321,000 women and 220,000 men aged 16 or over are economically inactive. This compares with 323,000 women and 136,000 men in 1984 – a decrease of 1% for women and an increase of 61% for men. During the same period, in GB the number of economically inactive women decreased by 4% from 11.2m to 10.8m while the number of economically inactive men increased by 47% from 4.9m to 7.2m.

## Economically Inactive (16+) 2001 - 2011

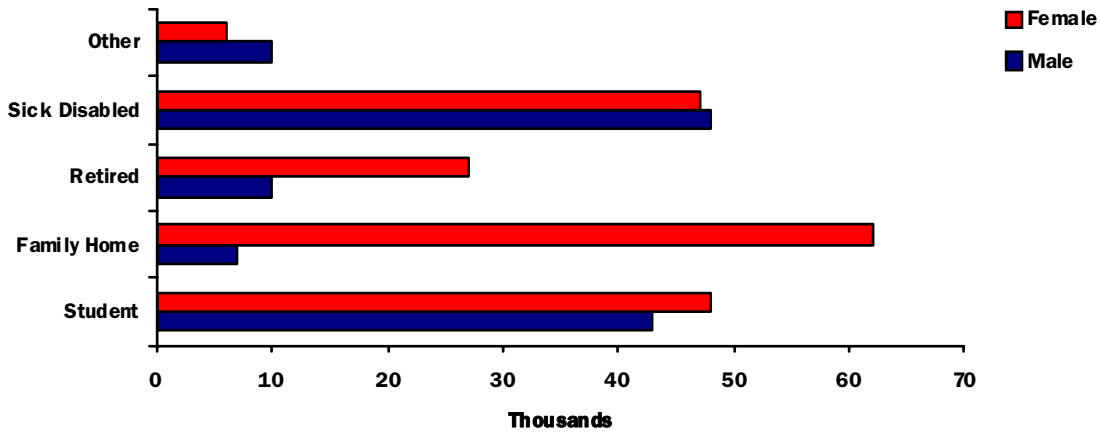
Figure 24



- The working age inactivity rate for women has decreased by 3.7 percentage points over the last 5 years and by 3.4 percentage points over the last year to 32.8%. The corresponding male rate (20.7%) has fallen by 0.7 percentage points over the last 5 years, and decreased by 1.1 percentage points during the last year.

- The working age inactivity rate for women in GB is at the same level as it was 5 years ago, but it has decreased over the last year by 0.2 percentage points to 29.5%. The corresponding male rate (17.2%) has risen by 0.7 percentage points over the last 5 years, but decreased by 0.1 percentage points over the year to April – June 2011.
- Of the 191,000 women, aged 16-64, who were economically inactive in NI, 14% (27,000) wanted a job, but were not seeking work in the past four weeks or were unable to start work. The remaining 86% stated that they did not want work. For economically inactive men of working age (16-64), 18% wanted a job and 82% did not want work. [In GB 78% of economically inactive women did not want work, while 22% did want work but were not seeking work in the past four weeks or were unable to start work.]
- Thirty-two per cent of working age inactive women were unavailable for work due to family/home commitments, while the equivalent estimate for males was too small to quote.
- The main reason given by men for inactivity was sickness or disability at 41%, compared to 25% for women.
- The other main reason for inactivity was those who were students. Twenty-five per cent of working age inactive women cited this as their reason for inactivity, compared to 36% of men.

**Reason for Economic Inactivity (16-64), April - June 2011**  
**Figure 25**



“Other” includes the ‘retired’ and ‘discouraged workers’ (those not in a job who would like work and whose reason for not seeking work in the past four weeks is that they believe there are no jobs available).

# Childcare Provision and Income Support

## 6

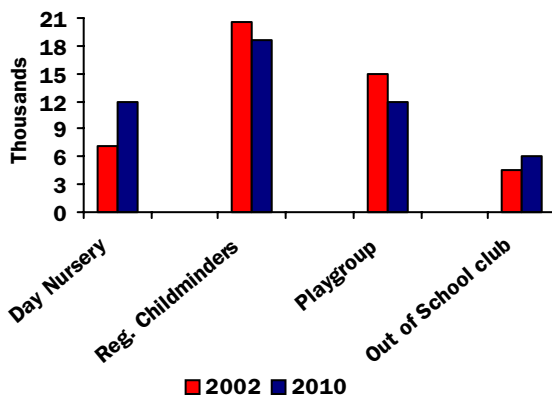
### CHILDCARE PROVISION AND INCOME SUPPORT

#### Day Care places (source: Department of Health, Social Services and Public Safety)

In Northern Ireland people who look after children aged under twelve years have been required to register since November 1996. The latest available figures in relation to these people are shown below together with corresponding figures for seven years earlier for comparison purposes.

- In 2010, the overall number of day care places in NI was 48,623 - up 3% from the level recorded in 2002 (47,170).
- There were 11,831 day nursery places in 2010 - an increase of 65% from the 2002 figure of 7,156.
- There were 18,724 places with registered childminders in 2010 - down 9% from the level in 2002 (20,464).
- There were 12,000 playgroup places in NI in 2010 - down 20% from the 2002 figure (15,032).
- There were 6,068 places available in 'out of school clubs' in 2010 - up 34% from 2002 (4,518).

**Day Care places in Northern Ireland by type in 2002 and 2010**  
Figure 26



#### Childcare Charges (source: HM Revenue and Customs)

- From October 1984 help with childcare charges has been available to families receiving Family Credit, Disability Working Allowance and Housing Benefit. From October 1999 Family Credit and Disability working Allowance were replaced by Working Families' Tax Credit (WFTC) and Disabled Person's Tax credit (DPTC), which are administered by the Inland Revenue. From April 2003 WFTC and DPTC were incorporated within the new tax credits, Child Tax Credit and Working Tax Credit. Child Tax Credit provides support to families for children (up to 31 August after their 16<sup>th</sup> birthday) and qualifying young people (those in full-time non advanced education until their 20<sup>th</sup> birthday) for which they are responsible. Working Tax Credit tops up the earnings of families on low or moderate incomes and includes an element for childcare costs.
- In Northern Ireland at 28 August 2011, 15,000 families were receiving higher Child and Working Tax Credits awards as a result of help with childcare charges.
- The average weekly amount of childcare charges (capped at £175 per week for one child and £300 per week for two or more children) paid in Northern Ireland was £114 and the average weekly increase in Child and Working Tax Credits awards was £75 for families benefiting from the childcare element. [£94 and £61 in the UK respectively.]

## **Income Support (source: Department for Social Development)**

From 6 October 2003, State Pension Credit replaced Minimum Income Guarantee (Income Support for people aged 60 and over). Where appropriate references to Income Support have been changed to Income Support/State Pension Credit to reflect this.

From 27 October 2008, Employment and Support Allowance replaced Incapacity Benefit and Income Support on the grounds of disability for new claims.

The number of Lone Parents claiming Income Support has been affected by the Lone Parent Obligations policy changes which came into effect from 2 December 2008. Lone Parents with older children may no longer be entitled to Income Support solely on the grounds of being a Lone Parent, subject to certain exemptions and conditions.

- At August 2011, there were 104,846 women on Income Support/State Pension Credit, this accounted for 58.6 % of all cases. The overall number of women claiming Income Support/State Pension Credit has decreased by 3.4% since August 2010, compared with a 2.1% decrease in the number of male claimants over the same period.
- A total of 21,267 (26.0%) Income Support claimants were classified as Lone Parents and the majority of these were women (97.7%). The overall number of lone parents has decreased by 9.5% or 2,236 lone parent claimants since August 2010.
- A higher proportion of men (86.4%) than women (76.8%) had been claiming Income Support for two years or more. The difference was particularly marked in the 18-24 years age group with 55.4% of men claiming for two years or more compared with 48.4% of women.

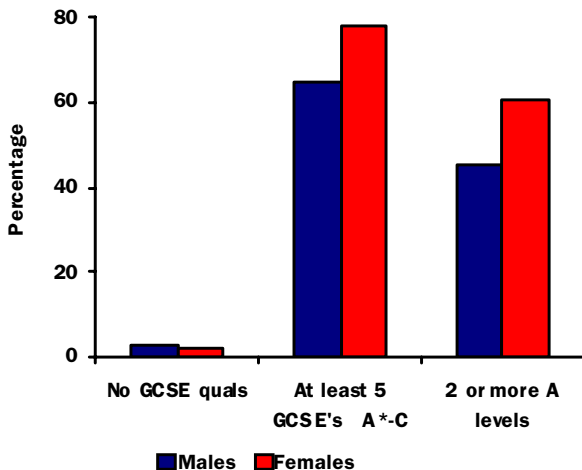
# Educational Standards

## 7

### Educational Standards of Women (source: School Leavers survey, Department of Education and Department for Employment & Learning)

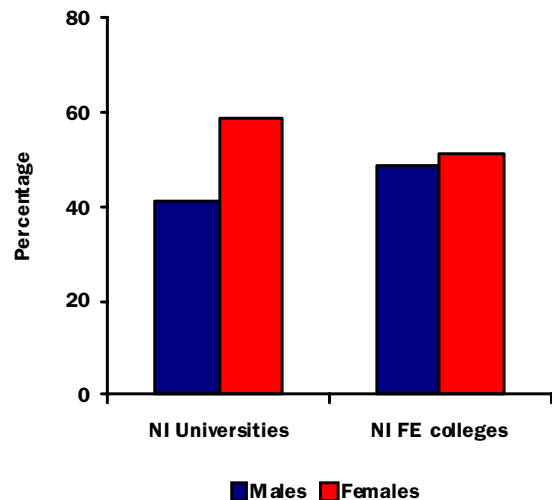
- Females leaving school tend to be better qualified than males and are more likely to progress to higher education.
- In 2009/10, 63% of girls left school with at least one A-level and 61% with two or more A-levels. The figures for boys were 47% and 45% respectively.
- Only 2% of girls left school with no GCSE qualifications, compared with 3% of boys.
- 78% of girls left school with at least 5 GCSE grades A\*-C, compared with 65% of boys.

**Qualifications on leaving school, 2009/10**  
Figure 27



- After leaving school 82% of girls progressed to further or higher education, compared with 69% of boys (2009/10).
- In 2009/10, the participation rate of 16 and 17 year olds in full-time education/vocational training was 89% for females, compared with 84% for males.
- 59% of all students enrolled at the NI universities are women (2009/10). Of all enrolments at NI Further Education Colleges, 51% are female (2009/10).
- In the academic year 2009/10, 39% of full-time academic staff in NI universities were women.

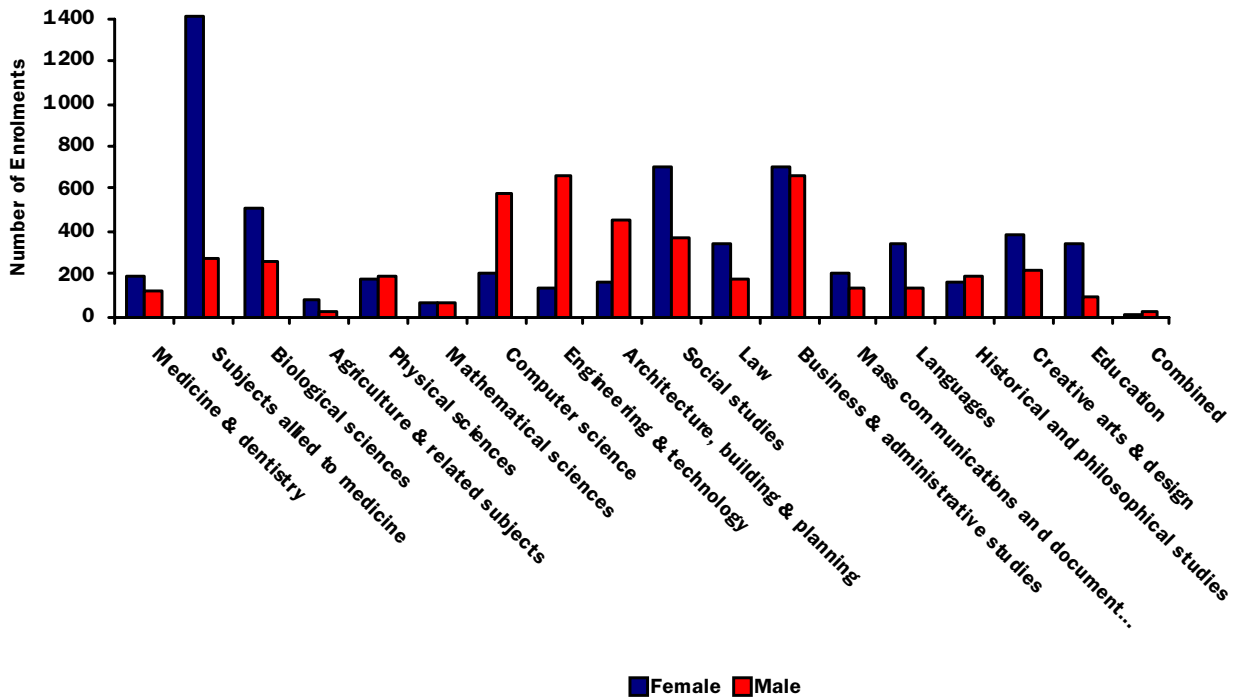
**Participation in NI Universities<sup>1</sup> and in NI FE Colleges, 2009/10**  
Figure 28



**Subject choice in Higher Education (source: Department for Employment and Learning)**

**Full-time new entrant undergraduate enrolments on Higher Education courses at NI Universities<sup>1</sup> by subject area 2009/10**

**Figure 29**



For full-time, first year undergraduate enrolments at NI Higher Education Institutions, the subject areas with the highest proportions of females are;

- Subjects allied to medicine (84%), Education (78%) and Agriculture & related subjects (74%)

and the subject areas with the lowest proportions of females are;

- Computer Science (26%), Architecture, building & planning (26%) and Engineering & Technology (18%).

**NI Universities**

Analysis of gender in first year undergraduate enrolments at NI Universities reveal:

- In the first year of medicine & dentistry and subjects allied to medicine, 80% of full-time undergraduates at the NI universities are female (2009/10).

- Of those full-time undergraduates enrolled on the first year of other science courses<sup>2</sup> at the NI universities 37% of students are female (2009/10).

- In the first year of non-science subjects<sup>3</sup> 61% of full-time undergraduates at the NI universities are women (2009/10).

- Women at NI universities accounted for 19% of first degree graduates in engineering and technology, 26% in computing science, 52% in physical science and 52% in mathematical science in 2009/10.

**NI Further Education Colleges**

For enrolments at Northern Ireland Further Education Colleges, the subject areas with the highest proportion of females are;

- Allied to medicine (85%), Social Studies (82%) and Creative Arts & Design (78%)

and the subject areas with the lowest proportions of females are;

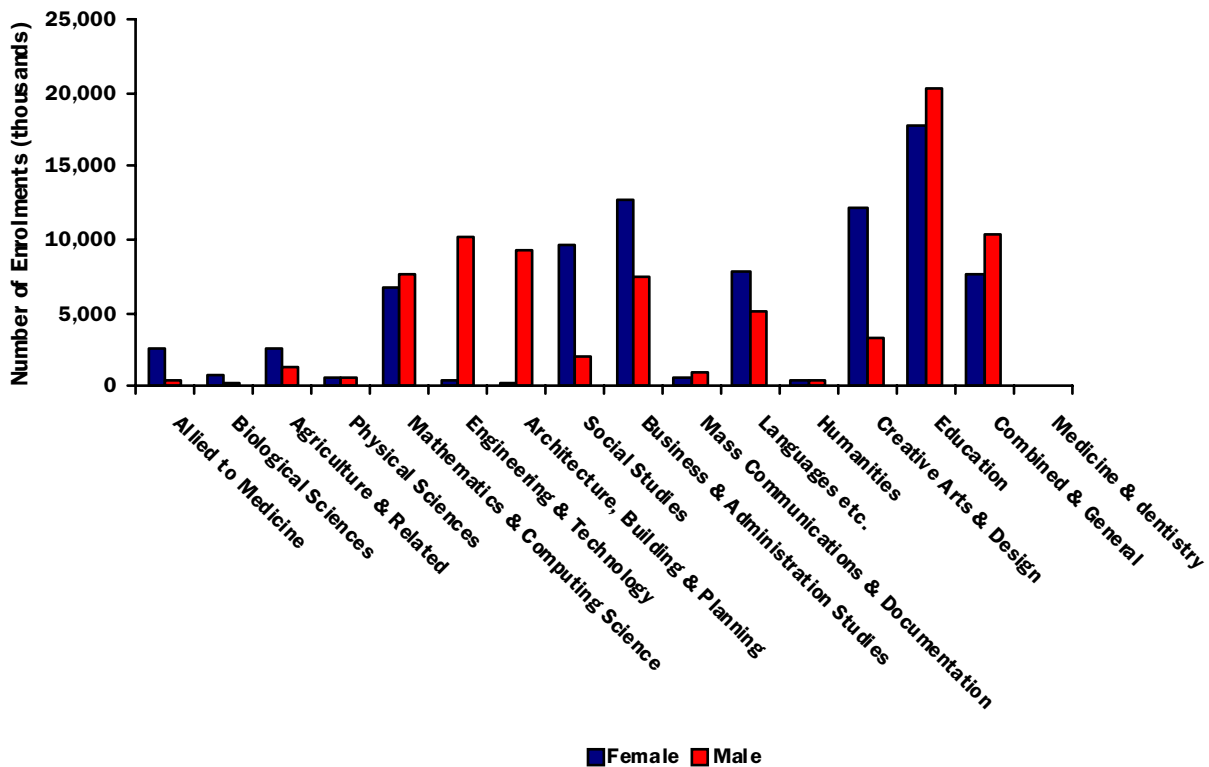
- Mass communication and documentation (38%), Engineering & Technology (5%) and Architecture, Building & Planning (3%).

Analysis of enrolments at Northern Ireland Further Education Colleges reveal that:

- In non science subjects<sup>3</sup>, 58% of all enrolments at NI Further Education Colleges are women (2009/10).
- In mathematical and computing sciences, 47% of total enrolments at NI Further Education Colleges are female (2009/10).
- Of the total enrolments on other science courses<sup>2</sup> at the NI Further Education Colleges, 28% are female (2009/10).

**Subject choice Tertiary Education: Further Education Colleges (source: Department for Employment and Learning)**

**Enrolments by subject area at NI Further Education Colleges 2009/10**  
**Figure 30**



<sup>1</sup> NI Universities includes Queen’s University Belfast, the University of Ulster, Stranmillis University College and St Mary’s University College.  
<sup>2</sup> Other Science courses include biological sciences, veterinary science, agriculture & related subjects, physical sciences, mathematical sciences, computer science and engineering & technology and architecture, building & planning.  
<sup>3</sup> Non science subjects include social studies, law, business & administrative studies, mass communications & documentation, languages, humanities, historical & philosophical studies, creative arts & design, education and combined studies.

Note: Both HE and FE data relates to full-year statistics for the 2009/10 academic year.

# Politics and Public Life

## 8

### Women in Politics and Public life

- Results from the Local Government elections in May 2011 show that 23.5% of Councillors in Local Government Districts in Northern Ireland are women. [31% in England according to Census of local authority councillors 2008.]
- Moyle District Council has the highest female representation, with 7 out of 15 (46.7%) Councillors female.
- Of the 26 Districts Councils in Northern Ireland, 2 have a female Mayor/Chair and a further 4 have a female Deputy Mayor/Deputy Chair as at August 2011.
- Northern Ireland has four elected women MPs (representing 22% of the 18 NI MPs). In addition, two of the three Northern Ireland MEPs are female. [In GB 22% of MPs and 30% of MEPs are women.]
- 34% of public appointments in Northern Ireland are held by women. This compares with 15% in 1985, 23% in 1990 and 32% in 1995.
- On the 118 publicly appointed bodies in Northern Ireland, 19 Chair and 8 Deputy Chair posts are held by women.
- Elections to the Northern Ireland Assembly took place on the 5 May 2011 - of the 108 elected members, 20 (19%) are women.
- As at September 2011, 3 of the 13 Ministers in the Northern Ireland Executive are female.

#### Sources:

**Local Government Staff Commission for NI,  
Central Appointments Unit,  
Office of First Minister and Deputy First Minister,  
Local Government Association,  
[www.parliament.uk](http://www.parliament.uk)  
[www.europarl.org.uk](http://www.europarl.org.uk)  
[ww.niassembly.gov.uk](http://ww.niassembly.gov.uk)**

# Women into Business

## 9

### Women into Business (source: Invest NI)

#### How entrepreneurial are women in Northern Ireland?

- Women remain the largest under-represented group when it comes to enterprise in Northern Ireland and represent a pool of untapped potential. In 2010 the female level of entrepreneurial activity in Northern Ireland was 3.3% compared to 9.6% for males. In the UK, female Total Entrepreneurial Activity (TEA) was 4%, compared with 9% for males.
- Northern Ireland continues to have the lowest ratio of female to male TEA rate (34%) - 10% lower than the UK as a whole.
- Nascent and new business activity declines with age but NI has the highest rate of the UK regions, at 5.3% compared to the UK average of 3.7%.

#### What affects levels of female entrepreneurship in Northern Ireland?

Just like their male counterparts, females in Northern Ireland are affected by the following factors, albeit to a greater extent:

- The likelihood of a woman setting up in business is strongly linked to knowing an entrepreneur, believing that there are good business opportunities and believing she has the right skills;
- The fear of failure has a negative impact on a woman's likelihood of starting a business;
- The proportion of Northern Ireland women who believe they have the necessary skills to start a business is low compared to the other UK regions. In general, 41% of non-entrepreneurial people in NI believe they have the skills, knowledge and experience to start a business, significantly lower than in England (47.8%). Also, the perception of business opportunities

was lowest in NI, with only 16% believing that there are good start-up opportunities, compared to 27.7% for England.

However, on a more encouraging note, women in Northern Ireland are as positive as men and, in fact, more positive than women generally across the UK, about entrepreneurship being a good career choice and having a high status.

### Invest Northern Ireland Support

Invest NI promotes female entrepreneurship through 2 primary avenues:

1. the Go For It programme which offers tailored advice and support to help people start a business through a personalised training plan. The programme has a specific target of achieving 50% female participation; and
2. supporting the work of the five business women's networks throughout Northern Ireland, which support new and established women-owned businesses and women in management positions by providing information, encouragement, ideas and business connections through networking opportunities.

#### Making Progress - Results

Within the Go For It Programme results to date are encouraging with an average of 40% female participation on the programme and the number of females who had business plans approved in the 2010/11 period was 38% of the total number.

For further information on Invest NI's female entrepreneurship activity please contact:

Karen Wilson: [karen.wilson@investni.com](mailto:karen.wilson@investni.com)

[www.investni.com](http://www.investni.com)

# Technical Notes

# 10

## Technical Note

### Definitions

#### In Employment

Those aged 16 and over who did some paid work in the reference week (either as an employee or self-employed); those who had a job which they were temporarily away from (on holiday for example); those participating in government training and employment programmes; and those doing unpaid family work.

#### Employees

The division between employees and self-employed is based on survey respondents' own assessment of their employment status.

#### Unpaid Family Workers

Persons doing unpaid work for a business they own or a business that a relative owns.

#### Full-time/Part-time

The classification of employees, self-employed, those on government work-related training programmes and unpaid workers in their main job as full-time or part-time is on the basis of self-assessment.

#### Economically Active

People aged 16 or over who are either in employment or ILO unemployed.

#### Economic Activity Rate

The percentage of people in a specified age group who are economically active.

#### Economically Inactive

People who are neither in employment nor unemployed. This group includes, for example, all those who were looking after a home or retired.

#### Employment Rate

The percentage of people in a specified age group who are in employment.

#### Unemployment

The International Labour Organisation (ILO) measure of unemployment used throughout this statistics notice refers to people without a job who were available to start work in the two weeks following their LFS interview and had either looked for work in the four weeks prior to interview or were waiting to start a job they had already obtained. This definition of unemployment is in accordance with that adopted by the 14<sup>th</sup> International Conference of Labour Statisticians and promulgated by the ILO in 1987.

#### Unemployment Rate

The percentage of economically active people who are unemployed.

#### Duration of Unemployment

Duration of unemployment is defined as the shorter of the following two periods:

- (a) duration of active search for work; and
- (b) length of time since employment.

The short-term unemployed are those people who have been unemployed for under 1 year, while the long-term unemployed are defined as those who have been unemployed for 1 year or more.

#### Working Age

The 'working age' definition, used in the calculation of employment and economic inactivity rates, was changed in August 2010 to include those aged from 16 to 64 for both men and women. Previously these rates were based on upper age limits of 59 for women and 64 for men, reflecting the state pension ages in the UK. However, between 2010 and 2020, the state pension age for women is increasing (by one month every two months) from 60 to 65, thereby making a change to the definition necessary.

The change in definition follows a UK wide public consultation on the issue and the approach being applied to Northern Ireland labour market statistics mirrors the approach that the Office for National Statistics (ONS) are applying to other UK regions. A consistent time series for the new headline rates has been produced and all future reference to working age rates will be based on the 16 to 64 definition. Please see link for further details [Introduction of new working-age definition](#).

For a limited period, employment and economic inactivity rates based on the old working age definition (i.e. 16-59/64) will be available on the DETI website at [DETI Statistics and Economic Research](#).

Please note that there are no implications for the headline unemployment rate, which will continue to be based on the economically active population aged 16 and over.

### **Industry**

The classification of respondents' industry of employment is based on the Standard Industrial Classification 2007: SIC(07)

### **Occupation**

The classification of respondents' occupations are based on the Standard Occupational Classification (SOC), introduced in June 2000.

### **Grossing To Population Totals**

Most of the results presented in this report are expressed in terms of percentages, following the grossing of sample numbers to population levels. Each individual participating in the survey is given a weight or "grossing factor" which is related to that person's age and sex. In this way the final grossed results give the population total for NI and reflect the distributions by sex and age shown by the population figures.

### **Sampling Error**

Because the LFS is a sample survey, results are subject to sampling error, i.e. the actual proportion of the population in private households with a particular characteristic may differ from the proportion of the LFS sample with that characteristic. Accordingly, although percentages in most tables are quoted to the nearest whole number, they should not be regarded as having this degree of accuracy, and indeed some apparent trends over time may be misleading due to sampling error.

### **Publication Threshold**

It is the nature of sampling variability that the smaller the group whose size is being estimated, the (proportionately) less precise that estimate is. LFS estimates of under 8,000 are not published in this supplement as they are likely to be unreliable. This revised publication threshold came into effect from 1 September 1999 and estimates below this threshold contained in earlier publications should, therefore, be treated with caution.

### **National Statistics**

While all the data presented in this publication are derived from official sources, not all of the sources are classified as National Statistics. The following data sources adhere to the [Code of Practice for Official Statistics](#) and have been designated as National Statistics:

Labour Force Survey; Claimant Count; Annual Survey of Hours and Earnings; Quarterly Employment Survey; Income Support; School Leaver's Survey.

### **Further Information:**

Further information on Northern Ireland economic statistics can be obtained by writing to:

NI Statistics & Research Agency,  
Department of Finance and Personnel,  
Economic & Labour Market Statistics Branch,  
Netherleigh, Massey Avenue,  
Belfast BT4 2JP

telephoning: (028) 9052 9439  
textphone: (028) 9052 9304  
fax: (028) 9052 9459  
e-mailing: [hugh.mcnicke@dfpni.gov.uk](mailto:hugh.mcnicke@dfpni.gov.uk)

Publication now available on visiting web site:  
[www.statistics.detini.gov.uk](http://www.statistics.detini.gov.uk)