



STATISTICAL PRESS RELEASE

15 September 2010

Coverage

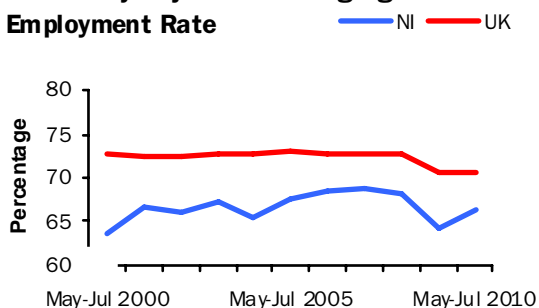
Northern Ireland, unless otherwise stated

Theme

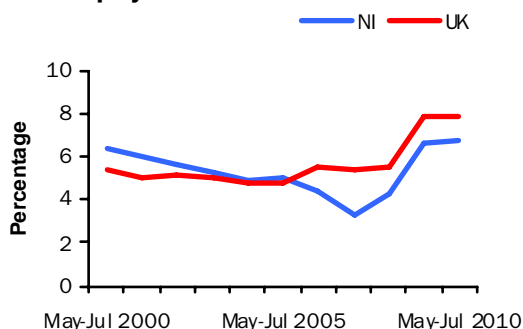
Labour Market

Seasonally Adjusted Working Age

Employment Rate



**Seasonally Adjusted
Unemployment Rate**



Issued by:

Statistics Research Branch, DETI,

Tel: 028 90529421

Email: statistics@detini.gov.uk

Enquiries by the media should be directed to:

Press Office, DETI,

Tel: 028 90529604

Email: pressoffice@detini.gov.uk

www.statistics.detini.gov.uk

Next publication date: 13th October 2010



Labour Market Statistics – September 2010

Seasonally adjusted Labour Force Survey (LFS) data for Northern Ireland for the period May - July 2010 estimated an increase over the quarter in the number of employed persons, while there was a fall in the number of unemployed and economically inactive persons. The August Claimant Count recorded an increase of 900 claimants from the previous month and now stands at 57,800.

In the latest reference period, the employment rate for those aged 16-64 was estimated at 66.5%, up 0.5 percentage points over the quarter and 2.3 percentage points over the year.

The unemployment rate for the period May - July 2010 was estimated at 6.8%, down 0.3 percentage points over the quarter, but up 0.2 points over the year. The NI rate remained below the UK (7.8%), European Union (9.6%) and Republic of Ireland (13.3%) rates.

The economic inactivity rate for those aged 16-64 in NI stands at 28.6%, down 0.3 percentage points over the quarter. The NI rate remains significantly higher than the UK average rate (23.2%) and is the highest of the twelve UK regions.

The LFS is a sample survey with an associated degree of sampling error (see table 1 overleaf for details).

The more recent seasonally adjusted claimant count stood at 57,800 (6.5%) at August 2010, representing an increase of 900 from the previous month's figure. Northern Ireland had the largest monthly increase in claimants and the second highest Claimant Count rate of the twelve UK regions.

The Department was notified of 277 proposed redundancies in the period mid August to mid September and there were 172 confirmed redundancies in August 2010.

The total number of employee jobs in Northern Ireland at June 2010 was 699,230 (Quarterly Employment Survey), down 1,120 jobs (-0.2%) over the quarter and 7,220 jobs (-1.0%) over the year. The latest quarterly decrease was 27% of the average quarterly decrease in jobs since the series peaked in June 2008.

NI seasonally adjusted data

	Reference period	Levels	Rates (%)	Levels	Rates (pps)
				Change on quarter	
Employment ¹	May-Jul 2010	781,000	66.5%	7,000	0.5
Unemployment ²	May-Jul 2010	57,000	6.8%	-2,000	-0.3
Economically Active ¹	May-Jul 2010	838,000	71.4%	5,000	0.3
Economically Inactive ¹	May-Jul 2010	556,000	28.6%	-2,000	-0.3
Employee Jobs ³	June 2010	699,230	-	-1,120	-
				Change on month	
Claimant Count ⁴	August 2010	57,800	6.5%	+900	0.1
Redundancies ⁵	August 2010	172	-	-	-

For footnotes, see 'Definitions' section (back page)

A NATIONAL STATISTICS PUBLICATION

The United Kingdom Statistics Authority has designated these statistics as National Statistics, in accordance with the Statistics and Registration Service Act 2007 and signifying compliance with the Code of Practice for Official Statistics.

Designation can be broadly interpreted to mean that the statistics:

- meet identified user needs;
- are well explained and readily accessible;
- are produced according to sound methods, and
- are managed impartially and objectively in the public interest.

Once statistics have been designated as National Statistics it is a statutory requirement that the Code of Practice shall continue to be observed.

Labour Market

Statistical Press Release

Seasonally adjusted Labour Force Survey (LFS) data for Northern Ireland for the period May - July 2010 estimated an increase over the quarter in the number of employed persons, while there was a fall in the number of unemployed and economically inactive persons. The seasonally adjusted claimant count in August 2010 increased by 900 over the month to 57,800. The Department was notified of 277 proposed redundancies in the latest reference period and 172 confirmed redundancies in August 2010.

Employment

The number of persons in employment in the period May - July 2010 was estimated at 781,000. This represented increases of 7,000 over the quarter and 32,000 over the year. The employment rate for those aged 16-64 was estimated at 66.5%, up 0.5 percentage points over the quarter and 2.3 percentage points over the year. However, NI's employment rate remained well below the UK average (70.7%) and was the lowest of the twelve UK regions.

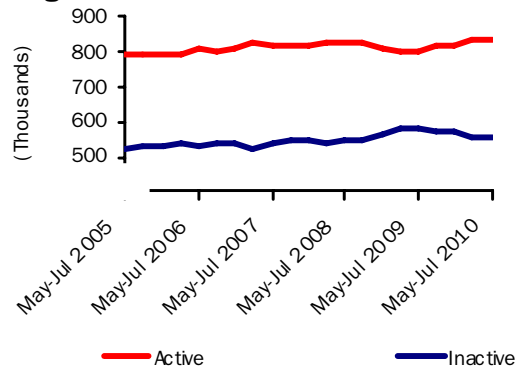
Unemployment

The unemployment rate for the period May - July 2010 was estimated at 6.8%, down 0.3 percentage points over the quarter, but up 0.2 points over the year. The number of unemployed persons was estimated at 57,000, down 2,000 over the quarter, but up 4,000 over the year. The male unemployment rate (8.8%) was over double the female rate (4.3%) in May - July 2010.

Unadjusted figures show that 41.4% of the unemployed have been unemployed for 1 year or more – up 10.7 percentage points over the year. They also estimate the unemployment rate for 18-24 year olds at 17.2% – down 1.2 percentage points over the year.

Seasonally Adjusted Labour Market Summary for Northern Ireland (16+)

Figure 1



Economically Inactive

The seasonally adjusted number of economically inactive persons in the period May - July 2010 was estimated at 556,000. This figure was down 2,000 over the quarter and 23,000 over the year.

The NI economic inactivity rate for those aged 16-64 stands at 28.6%. This is significantly higher than the UK average rate (23.2%) and is the highest of the twelve UK regions. Unadjusted figures estimate that 27% of the economically inactive, aged 16-64, in NI are students, 27% are sick/disabled, 24% are looking after the family/home, 14% are retired and 8% are 'other' reason.

Unadjusted figures also show that while 92% of the inactive do not want work, the remaining 8% want employment but do not satisfy the full ILO job search criteria (by actively seeking work and being available to start a job).

Northern Ireland Labour Market Summary (seasonally adjusted)

Table 1

	Period	Estimate	Sampling Variability of estimate	Change over year	Sampling Variability of change
Employment	May-Jul 2010	781,000	+/-22,000	32,000	+/-28,000
Unemployment	May-Jul 2010	57,000	+/-10,000	4,000	+/-13,000
Economically inactive	May-Jul 2010	556,000	+/-20,000	-23,000	+/-26,000
Unemployment rate	May-Jul 2010	6.8%	+/-1.2pps	0.2pps	+/-1.7pps
Employment rate ¹	May-Jul 2010	66.5%	+/-1.7pps	2.3pps	+/-2.2pps
Economic inactivity rate ¹	May-Jul 2010	28.6%	+/-1.7pps	-2.6pps	+/-2.2pps
Claimant Count	August 2010	57,800		5,600	

Note: pps = percentage points, ¹ Rates based on 16-64 population, see Definitions for details.

Statistical Press Release

Estimates from the LFS have an associated degree of statistical error as they are based on a sample of the population. The annual changes for the main LFS categories of employment, unemployment and economic inactivity were tested for statistical significance. The results showed that the annual change in the employment and economic inactivity rates were statistically significant i.e. the recorded change exceeded the variability expected from a sample survey of this size (see table 1 and Section 9 for details).

Unemployment Regional Comparison

The seasonally adjusted unemployment rate in NI (6.8%) remained below the UK average rate (7.8%) and was the joint third lowest rate among the twelve UK regions. The NI rate also compared favourably to the European Union rate (9.6%) and the Republic of Ireland rate (13.3%) for June 2010.

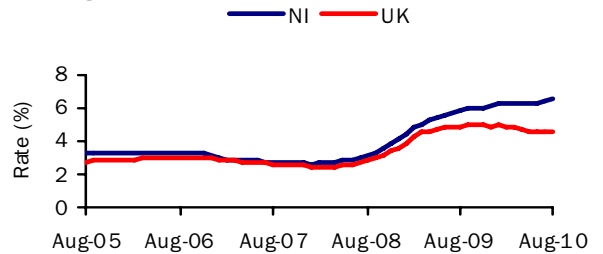
Claimant Count

The more recent seasonally adjusted claimant count increased by 900 over the month to August 2010 to 57,800 (6.5% of the workforce). This is the same as the increase for the previous month. Over the last three months the Claimant Count in NI increased by 2,300. Over the year it increased by 5,600 (10.7%) and the workforce unemployment rate has increased by 0.7 percentage points.

Claimant Count Regional Comparison

The seasonally adjusted claimant count rate in NI (6.5%) was higher than the UK average rate (4.5%) and was the second highest rate among the twelve UK regions. Over the month to August 2010 the NI Claimant Count level increased by 1.6% (900 claimants), while the UK average increased by 0.2% (Figure 2). NI showed the highest percentage monthly increase of all the UK regions. Over the year the NI Claimant Count level increased by 10.7%, compared to a fall of 8.5% in the UK. The annual change in NI was the highest increase among the twelve UK regions.

Seasonally Adjusted Claimant Count Monthly Rates
Figure 2



Claimant count rates for District Council Areas

Figure 3 (unadjusted numbers as a percentage of the resident working age population) show that the highest rates at August 2010 were in Derry (7.6%), Limavady (7.1%) and Belfast (6.8%). Those that showed the highest percentage increase in levels over the year to August 2010 were Newry & Mourne (28.9%), Ards (18.5%), Banbridge (18.5%) and North Down (18.5%). For further District Council data please see section 3 of the Labour Market Report.

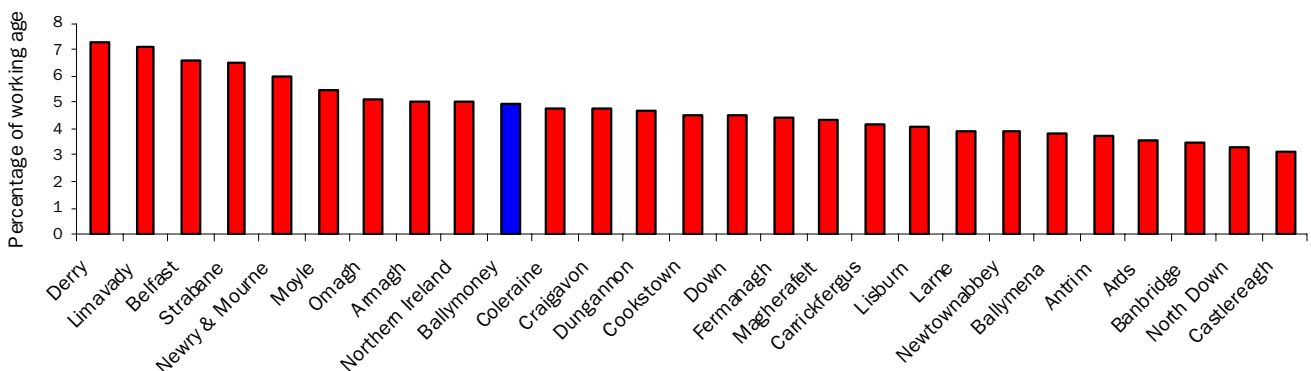
Employment and Training Measures

The Department for Employment and Learning (DEL) provides a number of services and programmes to help jobseekers find work. In September 2008 Steps to Work, the Department's new flexible approach to helping people to find work, was introduced in Northern Ireland and subsumes the main New Deal programmes. Overall, there has been an increase of 53.2% (4,307 persons) to 12,403 over the year to August 2010 in the number of those claimants who are eligible for mandatory participation on Steps to Work. However, anyone over 18 years old (or lone parents aged 16 years old or over) who is not working (or working less than 16 hours each week) is eligible. New Deal statistics are currently accessible via the DEL web link below - Steps to Work statistics will be published when data is available.

www.delni.gov.uk/index/statistics-and-research/labour-market/new-deal-statistics.htm

Unadjusted Claimant Count Rates By District Council Area

Figure 3



Statistical Press Release

Redundancies

The Department was notified of 277 proposed redundancies over the period mid August 2010 to mid September 2010. This compares to 265 proposed redundancies notified to the Department in the previous monthly period.

There were 172 confirmed redundancies in the month of August (Figure 5). Over the latest twelve monthly period there were a total of 2,935 confirmed redundancies, a decrease of 39% from the previous year (4,851). The highest number of confirmed redundancies took place in Belfast District Council area which had 33.5% (983) of all redundancies over the year.

Over the latest twelve month period there were a total of 3,204 proposed redundancies, a decrease of 49% from the previous year (6,236).

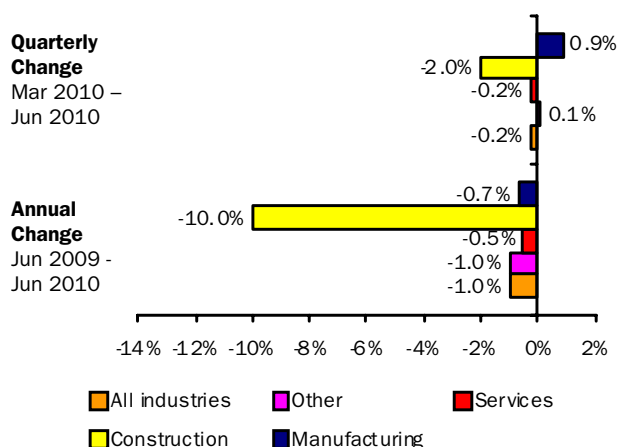
Currently there are 1,036 outstanding redundancies (that is, proposed but not confirmed), which is 51% lower than this time last year (2,117).

Note that since all proposed redundancies do not actually take place, the confirmed total provides a better indication of real job losses

Quarterly Employment Survey

The QES provides an estimate of the number of jobs (rather than persons in employment) and is the preferred measure of change in employee jobs. The estimated seasonally adjusted employee jobs total in Northern Ireland at June 2010 was 699,230. This represents a decrease of 1,120 over the quarter and a decrease of 7,220 over the year.

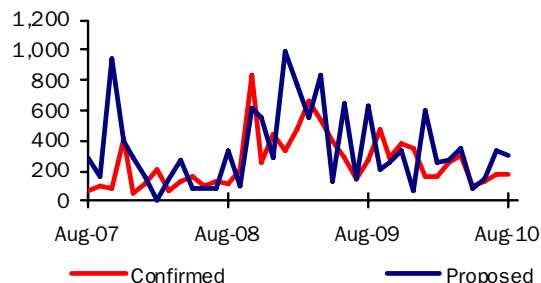
Annual and Quarterly changes in employee jobs (seasonally adjusted)
Figure 4



The seasonally adjusted quarterly change consisted of decreases in the Service sector (-1,090) and in Construction (-690). There were increases in Manufacturing (630) and also Other industries (+30) over the quarter.

Confirmed and Proposed Redundancies August 07 - August 10

Figure 5

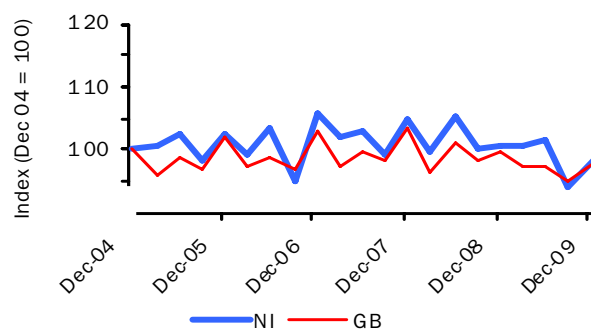


Hours Worked

The total workforce hours worked per week in Northern Ireland in December 2009 was estimated at 25.5 million hours, representing a decrease of 2.7% over the year (compared with a decrease of 1.9% in GB). Between December 2004 and December 2009, NI's total workforce hours worked per week decreased by 1.9%, compared to a 2.4% fall in GB (Figure 6). In the three months to June 2010, the average actual weekly hours worked in NI was 33.5 hours, which was higher than the UK average (31.9).

Index of total workforce hours worked per week, NI & GB

Figure 6



Source: Employment, Earnings and Productivity Division, ONS

Annual Survey of Hours and Earnings (ASHE)

Earning results for April 2009, which were released on 12th November 2009, show that yearly growth in median gross weekly earnings for all employees (i.e. both full- and part-time) in NI was 3.4% (to £356.7) compared to 2.2% in the UK (to £397.3). NI full-time employees' gross weekly earnings in April 2009 were £439.1, which was approximately 90% of the figure in the UK (£488.7). NI full-time earnings increased by 5.1% over the period, compared with an increase of 2.0% in the UK.

Full-time private sector median gross weekly earnings in NI increased at a marginally faster rate (1.6% to £383.0) than in the UK, where growth was 1.0% over the year (to £464.7). This represented little change in the NI/UK private sector pay gap, from 82.0% of the UK figure at April 2008 to 82.4% at April 2009.

Statistical Press Release

Labour Market Structure – Seasonally adjusted
Table 2

	(Thousands/Percentage)								
	Total aged 16 and over	Total persons of working age 16-64	All aged 16+				All working age 16-64		
			Total economically active	Total in employment	Unemployed	Economically inactive	Unemployment rate (%)	Activity rate 16-64 (%)	Employment rate (%) 16-64
	A	B	C	D	E	F	G	H	I
ALL PERSONS									
May-Jul 2007	1,354	1,125	814	787	27	541	3.3	71.0	68.6
May-Jul 2008	1,369	1,134	824	789	35	545	4.3	71.3	68.2
May-Jul 2009	1,382	1,142	802	749	53	579	6.6	68.8	64.1
Aug-Oct 2009	1,385	1,143	815	761	54	570	6.6	69.8	65.1
Nov-Jan 2010	1,388	1,145	819	768	52	569	6.3	69.9	65.4
Feb-Apr 2010	1,391	1,147	833	774	59	558	7.1	71.1	66.0
May-Jul 2010	1,394	1,148	838	781	57	556	6.8	71.4	66.5
Change on Quarter	3	2	5	7	-2	-2	-0.3	0.3	0.5
Change on Year	13	7	36	32	4	-23	0.2	2.6	2.3
MALES									
May-Jul 2007	655	556	447	431	16	209	3.6	78.6	75.7
May-Jul 2008	664	562	452	428	24	211	5.3	79.0	74.7
May-Jul 2009	670	565	439	401	38	232	8.6	75.5	68.8
Aug-Oct 2009	672	566	445	405	40	227	8.9	76.6	69.5
Nov-Jan 2010	674	567	447	409	38	227	8.4	76.3	69.7
Feb-Apr 2010	675	568	460	416	44	216	9.6	78.9	71.1
May-Jul 2010	677	569	460	419	40	217	8.8	78.6	71.4
FEMALES									
May-Jul 2007	699	569	367	356	11	332	3.0	63.5	61.7
May-Jul 2008	705	573	372	361	11	334	3.0	63.8	61.9
May-Jul 2009	711	576	364	348	15	348	4.2	62.2	59.6
Aug-Oct 2009	713	577	370	356	14	343	3.8	63.2	60.8
Nov-Jan 2010	714	578	373	359	14	342	3.8	63.7	61.2
Feb-Apr 2010	716	579	373	358	15	343	3.9	63.6	61.0
May-Jul 2010	717	580	378	362	16	339	4.3	64.4	61.6

Relationship between columns: A=C+F; C=D+E; G=E/C, H=economically active of working age/total population of working age, I=in employment of working age/total population of working age, * **A and B are underlying population estimates and are therefore not seasonally adjusted.**

Figures have been revised to incorporate the findings from the annual review of seasonal adjustment..

Please see note on revisions policy in Section 9.

Working age rates based on 16-64 population for both males and females - see Section 9 for details.

Figures may not sum due to rounding.

Statistical Press Release

Seasonally Adjusted Regional Summary, May - July 2010

Table 3

	Labour Force Survey (LFS) ¹						Employee Jobs ³	Claimant count rate (%) ⁴	Claimant count level Percentage Change over the year	Claimant count level Percentage Change over the month	Jobs Density Indicator ⁵
	Employment		Unemployment		Economically Inactive						
	Rate	Annual Change ²	Rate	Annual Change ²	Rate	Annual Change ²					
North East	68.3	2.8	9.1	-0.4	24.7	-2.7	1,039	6.6	-7.3	0.5	0.72
North West	69.3	0.5	8.1	-0.6	24.5	-0.1	2,904	5.1	-10.2	0.4	0.80
Yorkshire & the Humber	69.3	0.3	9.1	0.2	23.6	-0.6	2,134	5.5	-8.2	0.2	0.79
East Midlands	71.4	-1.5	7.4	0.1	22.8	1.5	1,813	4.4	-13.2	-0.7	0.81
West Midlands	69.6	1.5	8.4	-2.2	23.8	0.1	2,226	5.8	-12.4	-0.4	0.81
East	73.6	-1.4	6.8	0.3	20.9	1.2	2,360	3.8	-10.1	0.6	0.81
London	68.1	0.7	9.2	0.0	24.8	-0.8	4,030	4.4	-4.1	0.0	0.93
South East	74.7	-0.4	6.2	0.1	20.3	0.4	3,539	3.0	-14.6	-0.6	0.86
South West	74.2	0.1	6.0	-0.7	20.9	0.5	2,133	3.0	-15.3	0.5	0.86
England	71.1	0.2	7.7	-0.3	22.8	0.1	22,178	4.4	-10.2	0.0	0.84
Wales	67.0	-0.5	8.4	0.3	26.6	0.2	1,159	5.0	-10.8	0.3	0.76
Scotland	70.5	-1.3	8.9	1.8	22.5	-0.2	2,201	4.9	3.0	0.5	0.84
Great Britain	70.9	0.0	7.8	-0.1	23.0	0.0	25,538	4.5	-9.1	0.1	0.83
N Ireland	66.5	2.3	6.8	0.2	28.6	-2.6	700	6.5	10.7	1.6	0.78
United Kingdom	70.7	0.1	7.8	-0.1	23.2	0.0	26,239	4.5	-8.5	0.2	0.83

¹ Employment and economic inactivity rates are based on working age population (16-64); Unemployment rates are based on 16+ population.

² Data refer to percentage point change of respective rate.

³ As at March 2010 (thousands).

⁴ As at August 2010: percentage of the workforce.

⁵ Not seasonally adjusted – data relates to 2007. Jobs Density – total number of jobs in an area divided by the resident population of working age in that area.

DEFINITIONS

Notes to Table on Front Page

pps=percentage points

¹ Levels for all persons aged 16 and over, rates for working age (16-64)

² People aged 16 and over. Unemployment rate=total unemployed as a proportion of the economically active

³ Quarterly Employment Survey

⁴ Seasonally adjusted. Rates are as a percentage of the total workforce.

⁵ Confirmed redundancies in the calendar month.

ILO definition

The definition of unemployment used in the Labour Force Survey (LFS) is in accordance with that promulgated by the International Labour Organisation (ILO). The ILO unemployed include those without a job who were able to start work in the two weeks following their LFS interview and had either looked for work in the four weeks prior to interview or were waiting to start a job they had already obtained.

The definition of ILO employed applies to anyone (aged 16 or over) who has done at least one hour's paid work in the week prior to interview, or has a job they are temporarily away from (e.g. on holiday). Also included are people who do unpaid work in a family business and people on Government-supported employment training schemes.

The ILO measures are particularly useful for examining short term and long term trends over time and key LFS time series data are available both seasonally adjusted and unadjusted.

Sampling variability

The LFS is a sample survey, and as such, estimates obtained from it are subject to sampling variability. If we drew many samples each would give a different result. The ranges shown for the LFS data in table 1 represent 95% confidence intervals i.e. we would expect that in 95% of samples the range would contain the true value. These confidence intervals have been calculated using data that is unadjusted for seasonality, with the relevant sampling errors produced applied to the seasonally adjusted data.

If the 'annual change' for an estimate has increased or decreased by more than the 'sampling variability of the change', this change would be statistically significant. The annual changes for the main LFS categories of employment, unemployment and economic inactivity were tested for statistical significance. The results for May - July 2010 showed that the annual change in the employment and economic inactivity rates were statistically significant at the 95% level.

Statistical Press Release

Please see attached link for further LFS notes and definitions.

[Labour Force Survey Notes and Definitions](#)

LFS revisions

LFS microdata has recently been revised to incorporate the latest population estimates. The revision effect LFS data from the period June to August 2006 onwards and were first published in February 2010. The magnitude of the revisions were relatively small, with the revisions to the unemployment rate falling within +/-0.05 percentage points and the working age employment rate within +/- 0.1 percentage points. The procedures being applied to the NI LFS results were consistent with those applied by the Office for National Statistics to other UK regions.

More information on the revision policy concerning labour market statistics can be found through the link below:

[Labour market statistics revisions policy](#)

Definition of 'working age'

The 'working age' definition, used in the calculation of employment and economic inactivity rates, was changed in August 2010 to include those aged from 16 to 64 for both men and women. Previously these rates were based on upper age limits of 59 for women and 64 for men, reflecting the state pension ages in the UK. However, between 2010 and 2020, the state pension age for women is increasing (by one month every two months) from 60 to 65, thereby making a change to the definition necessary.

The change in definition follows a UK wide public consultation on the issue and the approach being applied to Northern Ireland labour market statistics mirrors the approach that the Office for National Statistics (ONS) are applying to other UK regions. A consistent time series for the new headline rates has been produced and all future reference to working age rates will be based on the 16 to 64 definition. Please see link for further details

http://www.detini.gov.uk/introduction_of_new_working_age_definition.pdf.

For a limited period, employment and economic inactivity rates based on the old working age definition (i.e. 16-59/64) will be available on the DETI website at <http://www.detini.gov.uk/deti-stats-index/stats-surveys.htm>.

Please note that there are no implications for the headline unemployment rate, which will continue to be based on the economically active population aged 16 and over.

Claimant Count definition

Claimant Count figures are derived from records of claimants held at Social Security Offices. The term 'claimants' in the claimant count is used to include those who claim Jobseeker's Allowance (JSA) and National Insurance credits. The figures include severely disabled claimants, but exclude students seeking vacation work and the temporarily stopped. The Claimant Count is a very up-to-date measure of those eligible to claim a specific unemployment related benefit and data are available for a range of geographical sub-regions (e.g. District Council Areas, Parliamentary Constituency Areas, Travel-to-Work Areas and Wards). It also provides seasonally adjusted and unadjusted data and as a result is a useful measure for examining both short-term and long-term trends.

Seasonally Adjusted claimant count figures are provisional when published and subject to revision, mainly the following month and are only available at Northern Ireland level. Seasonally Adjusted totals are subject to an annual update (usually April) to take account of latest assessment trends.

[Background Notes to the Quarterly Employment Survey \(QES\)](#)

[Definitions for the Annual Survey of Hours and Earnings ASHE](#)

Government Targets

Data from the Labour Force Survey (LFS) and the Quarterly Employment Survey (QES) are used in the measurement of targets set in the Northern Ireland Executive's Programme for Government (PSA targets) See www.pfgbudgetni.gov.uk/finalpfg.pdf for further details. The LFS and QES data feed into productivity estimates for NI and are therefore indirectly used to measure progress towards PSA 1: Productivity growth. In addition, LFS data is used to measure the proportion of the working age population qualified to Skill levels 2 and 3. This data therefore feeds into the measurement of PSA 2: Skills for prosperity.

Details of progress towards these targets can be found at:

www.pfgbudgetni.gov.uk/pfg_delivery_report_q4_08_09-final-pdf-version-5.pdf

For further information:

AN ELECTRONIC VERSION OF THIS DOCUMENT WITH ASSOCIATED HYPERLINKS IS AVAILABLE ON THE HOME PAGE OF THE BRANCH WEBSITE AT:

www.statistics.detini.gov.uk

You can also contact Statistics Research Branch by: -

Writing to:

Martin Monaghan
Statistics Research Branch, Room 110,
Netherleigh, Massey Avenue, Belfast BT4 2JP.

Tel: (028) 9052 9421
Fax: (028) 9052 9658
Textphone: (028) 9052 9304
Email: statistics@detini.gov.uk