



STATISTICAL PRESS RELEASE

16 June 2010

Coverage

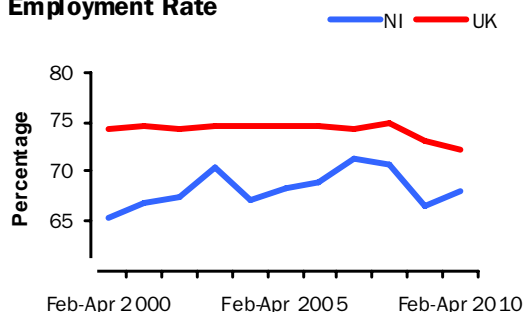
Northern Ireland, unless otherwise stated

Theme

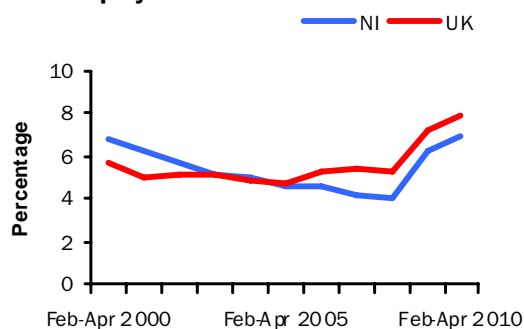
Labour Market

Seasonally Adjusted Working Age

Employment Rate



Seasonally Adjusted Unemployment Rate



Issued by:

Statistics Research Branch, DETI,

Tel: 028 90529421

Email: statistics@detini.gov.uk

Enquiries by the media should be directed to:

Press Office, DETI,

Tel: 028 90529604

Email: pressoffice@detini.gov.uk

www.statistics.detini.gov.uk

Next publication date: 14th July 2010



Labour Market Statistics – June 2010

Seasonally adjusted Labour Force Survey (LFS) data for Northern Ireland for the period February - April 2010 estimated an increase over the quarter in the number of employed and unemployed persons, while there was a fall in the number of economically inactive. The May Claimant Count recorded an increase of 100 claimants from the previous month and has fluctuated around the 55,500 (+/- 100) level for the last 5 months

In the latest reference period, the working age employment rate was estimated at 68.1%, up 0.8 percentage points over the quarter, up 1.6 percentage points over the year, but down 2.6 percentage points over two years.

The unemployment rate was 6.9%, up 0.6 percentage points over both the quarter and the year. The NI rate remained below the UK (7.9%), European Union (9.6%) and Republic of Ireland (13.2%) rates for March 2010.

The working age economic inactivity rate in NI fell by 1.3 percentage points over the quarter to 26.7%. However, it remained above the UK average rate (21.5%) and was the highest of the twelve UK regions.

The LFS is a sample survey with an associated degree of sampling error (see table 1 overleaf for details).

The more recent seasonally adjusted claimant count stood at 55,500 (6.2%) at May 2010 representing an increase of 100 from the previous month's figure, a decrease of 100 over three months and an increase of 7,400 over the year.

The Department was notified of 81 proposed redundancies in the period mid May to mid June and there were 98 confirmed redundancies in May 2010.

The total number of employee jobs in Northern Ireland at March 2010 was 700,210 (Quarterly Employment Survey), down 1,280 jobs (-0.2%) over the quarter and 13,260 jobs (-1.9%) over the year. However, this quarter's decline was the smallest decrease since the employee jobs series peaked in June 2008.

NI seasonally adjusted data

	Reference period	Levels	Rates (%)	Levels	Rates (pps)
				Change on quarter	
Employment ¹	Feb-Apr 2010	775,000	68.1%	9,000	0.8
Unemployment ²	Feb-Apr 2010	58,000	6.9%	6,000	0.6
Economically Active ¹	Feb-Apr 2010	833,000	73.3%	14,000	1.3
Economically Inactive ¹	Feb-Apr 2010	558,000	26.7%	-11,000	-1.3
Employee Jobs ³	March 2010	700,210	-	-1,280	-
				Change on month	
Claimant Count ⁴	May 2010	55,500	6.2%	+100	0.0
Redundancies ⁵	May 2010	98	-	-	-

For footnotes, see 'Definitions' section (back page)

Labour Market

Statistical Press Release

Seasonally adjusted Labour Force Survey (LFS) data for Northern Ireland for the period February - April 2010 estimated an increase over the quarter in the number of employed and unemployed persons, while there was a fall in the number of economically inactive. The seasonally adjusted claimant count in May 2010 increased by 100 over the month to 55,500 and the Department was notified of 81 proposed redundancies in the latest reference period and 98 confirmed redundancies in May 2010.

Employment

The number of persons in employment in the period February - April 2010 was estimated at 775,000. This represented increases of 9,000 over the quarter and 23,000 over the year. The working age employment rate was estimated at 68.1%, up 0.8 percentage points over the quarter and 1.6 percentage points over the year. However, NI's working age employment rate remained well below the UK average (72.1%) and was the lowest of the twelve UK regions.

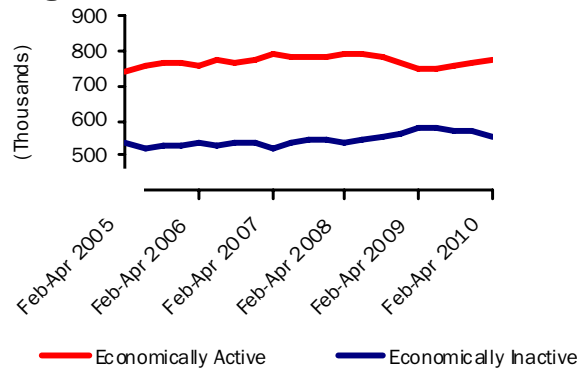
Unemployment

The unemployment rate for the period February - April 2010 was estimated at 6.9%, up 0.6 percentage points over both the quarter and the year. The number of unemployed persons was estimated at 58,000, up 6,000 over the quarter and 7,000 over the year. The male unemployment rate (9.4%) was over double the female rate (3.8%) in February - April 2010.

Unadjusted figures show that 41.1% of the unemployed have been unemployed for 1 year or more – up 10.3 percentage points over the year. They also estimate the unemployment rate for 18-24 year olds at 16.0% – up 0.5 percentage points over the year.

Seasonally Adjusted Labour Market Summary for Northern Ireland (16+)

Figure 1



Economically Inactive

The seasonally adjusted number of economically inactive persons in the period February - April 2010 was estimated at 558,000. This figure has decreased by 11,000 over the quarter and by 18,000 over the year.

The working age economic inactivity rate for NI stands at 26.7%. This is significantly higher than the UK average rate (21.5%) and is the highest of the twelve UK regions. However, it is worth noting that unadjusted figures estimate that 32.3% of the economically inactive of working age in NI are students.

Unadjusted figures show that while 93% of the inactive do not want work, the remaining 7% want employment but do not satisfy the full ILO job search criteria (by actively seeking work and being available to start a job). The number of economically inactive persons who want a job but are not seeking or available for work stood at 41,000 in the latest period.

Northern Ireland Labour Market Summary (seasonally adjusted)

Table 1

	Period	Estimate	Sampling Variability of estimate	Change over year	Sampling Variability of change
Employment	Feb-Apr 2010	775,000	+/-22,000	23,000	+/-28,000
Unemployment	Feb-Apr 2010	58,000	+/-10,000	7,000	+/-13,000
Economically inactive	Feb-Apr 2010	558,000	+/-20,000	-18,000	+/-26,000
Unemployment rate	Feb-Apr 2010	6.9%	+/-1.3pps	0.6pps	+/-1.7pps
Employment rate ¹	Feb-Apr 2010	68.1%	+/-1.8pps	1.6pps	+/-2.3pps
Economic inactivity rate ¹	Feb-Apr 2010	26.7%	+/-1.7pps	-2.3pps	+/-2.2pps
Claimant Count	May 2010	55,500		7,400	

Note: pps = percentage points, ¹ Rates based on working age population (16-59/64), see Definitions for details.

Statistical Press Release

Estimates from the LFS have an associated degree of statistical error as they are based on a sample of the population. The annual changes for the main LFS categories of employment, unemployment and economic inactivity were tested for statistical significance. The results showed that the annual change in the economic inactivity rate was the only statistically significant change (see table 1 and 'Definitions' for further details).

The seasonally adjusted unemployment rate in NI (6.9%) remained below the UK average rate (7.9%) and was the fourth lowest rate among the twelve UK regions. The NI rate also compared favourably to the European Union rate (9.6%) and the Republic of Ireland rate (13.2%) for March 2010. The annual increase in the NI unemployment rate (+0.6 percentage points) was equal to the increase in the UK rate (+0.6 percentage points).

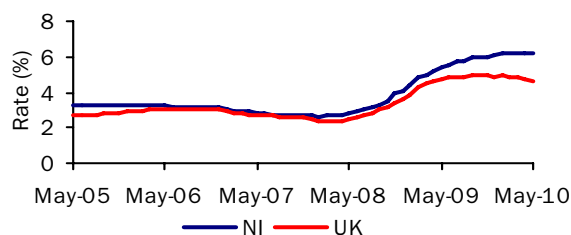
Claimant Count

The more recent seasonally adjusted claimant count increased by 100 over the month to May 2010 to 55,500 (6.2% of the workforce). Last month the claimant count decreased by 200. However, over the year the claimant count increased by 7,400 (15.4%) and the workforce unemployment rate increased by 0.8 percentage points.

Claimant Count Regional Comparison

The seasonally adjusted claimant count rate in NI (6.2%) was higher than the UK average rate (4.6%) and was the second highest rate among the twelve UK regions. Over the month to May 2010 the NI Claimant Count level increased by 0.2% (100 claimants), while the UK average decreased by 2.0% (Figure 2). NI showed the only percentage increase of all the UK regions. Over the year the NI Claimant Count level increased by 15.4%, which was higher than the UK average (-3.8%) and was the highest annual increase among the twelve UK regions.

Seasonally Adjusted Claimant Count Monthly Rates
Figure 2



Claimant count rates for District Council Areas

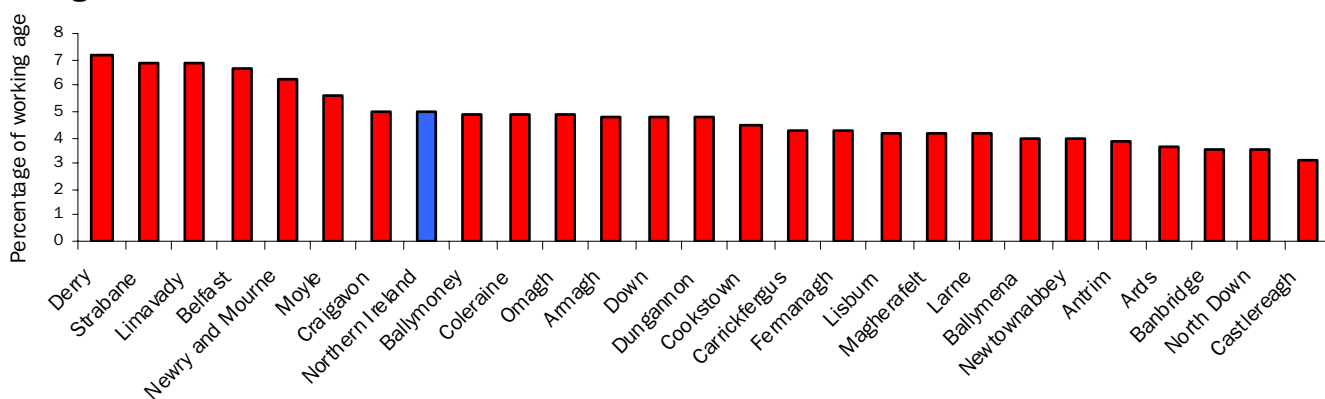
Figure 3 (unadjusted numbers as a percentage of the resident working age population) show that the highest rates at May 2010 were in Derry (7.2%), Strabane (6.9%) and Limavady (6.8%). Those that showed the highest percentage increase in levels over the year to May 2010 were Newry & Mourne (33.6%), Castlereagh (26.9%) and North Down (25.2%). For further District Council data please see section 3 of the Labour Market Report.

Employment and Training Measures

The Department for Employment and Learning (DEL) provides a number of services and programmes to help jobseekers find work. In September 2008 Steps to Work, the Department's new flexible approach to helping people to find work, was introduced in Northern Ireland and subsumes the main New Deal programmes. Overall, there has been an increase of 70.4% (4,681 persons) to 11,327 over the year to May 2010 in the number of those claimants who are eligible for mandatory participation on Steps to Work. However, anyone over 18 years old (or lone parents aged 16 years old or over) who is not working (or working less than 16 hours each week) is eligible. New Deal statistics are currently accessible via the DEL web link below - Steps to Work statistics will be published when data is available.

www.delni.gov.uk/index/statistics-and-research/labour-market/new-deal-statistics.htm

Unadjusted Claimant Count Rates By District Council Area
Figure 3



Statistical Press Release

Redundancies

The Department was notified of 81 proposed redundancies over the period mid May 2010 to mid June 2010. This compares to 206 proposed redundancies notified to the Department in the previous monthly period.

There were 98 confirmed redundancies in the month of May (Figure 5). Over the latest twelve monthly period there were a total of 3,146 confirmed redundancies, a decrease of 30% from the previous year (4,511). The highest number of confirmed redundancies took place in Belfast District Council area which had 33.8% (1,062) of all redundancies over the year.

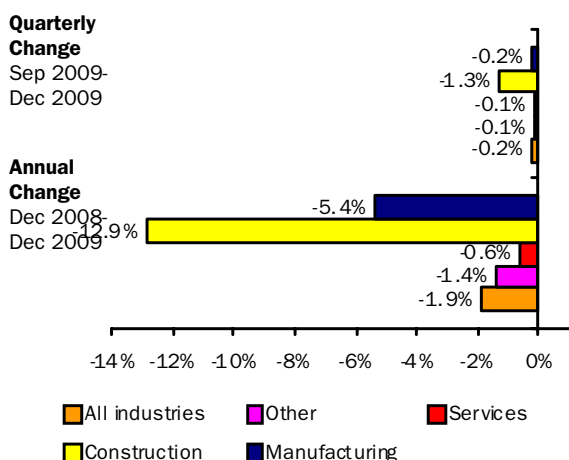
Over the latest twelve month period there were a total of 3,849 proposed redundancies, a decrease of 28% from the previous year (5,319). Currently there are 975 outstanding redundancies (that is, proposed but not confirmed), which is 42% lower than this time last year (1,683).

Note that since all proposed redundancies do not actually take place, the confirmed total provides a better indication of real job losses.

Quarterly Employment Survey

The QES provides an estimate of the number of jobs (rather than persons in employment) and is the preferred measure of change in employee jobs. The estimated seasonally adjusted employee jobs total in Northern Ireland at March 2010 was 700,210. This represents a decrease of 1,280 over the quarter and a decrease of 13,260 over the year.

Annual and Quarterly changes in employee jobs (seasonally adjusted)
Figure 4

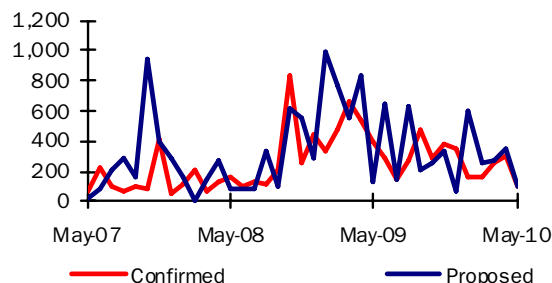


The seasonally adjusted quarterly change consisted of decreases in Manufacturing (-150), in the Service sector (-660) and in Construction (-460). Other industries also decreased over the quarter (-20).

Confirmed and Proposed Redundancies

May 07 - May 10

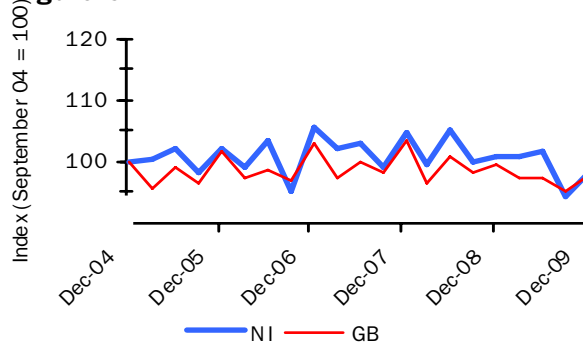
Figure 5



The total workforce hours worked per week in Northern Ireland in December 2009 was estimated at 25.5 million hours, representing a decrease of 2.7% over the year (compared with a decrease of 1.9% in GB). Between December 2004 and December 2009, NI's total workforce hours worked per week decreased by 1.9%, compared to a 2.4% fall in GB (Figure 6). In the three months to March 2010, the average actual weekly hours worked in NI was 33.1 hours, which was higher than the UK average (31.5).

Index of total workforce hours worked per week, NI & GB

Figure 6



Source: Employment, Earnings and Productivity Division, ONS

Annual Survey of Hours and Earnings (ASHE)

Earning results for April 2009, which were released on 12th November 2009, show that yearly growth in median gross weekly earnings for all employees (i.e. both full- and part-time) in NI was 3.4% (to £356.7) compared to 2.2% in the UK (to £397.3). NI full-time employees' gross weekly earnings in April 2009 were £439.1, which was approximately 90% of the figure in the UK (£488.7). NI full-time earnings increased by 5.1% over the period, compared with an increase of 2.0% in the UK.

Full-time private sector median gross weekly earnings in NI increased at a marginally faster rate (1.6% to £383.0) than in the UK, where growth was 1.0% over the year (to £464.7). This represented little change in the NI/UK private sector pay gap, from 82.0% of the UK figure at April 2008 to 82.4% at April 2009.

Statistical Press Release

**Labour Market Structure – Seasonally adjusted
Table 2**

(Thousands/Percentage)

	Total aged 16 and over	Total persons of working age 16-59/64	All aged 16+					All working age 16-59/64	
			Total economically active	Total in employment	Unemployed	Economically inactive	Unemployment rate (%)	Activity rate 16-59/64 (%)	Employment rate (%) 16-59/64
	A	B	C	D	E	F	G	H	I
ALL PERSONS									
Feb-Apr 2007	1,350	1,076	828	793	34	523	4.2	74.4	71.2
Feb-Apr 2008	1,365	1,086	828	795	33	537	4.0	73.7	70.6
Feb-Apr 2009	1,379	1,093	802	752	50	577	6.3	71.0	66.4
May-Jul 2009	1,382	1,095	802	749	54	579	6.7	70.7	65.9
Aug-Oct 2009	1,385	1,096	814	760	53	571	6.5	71.8	67.0
Nov-Jan 2010	1,388	1,098	818	766	52	570	6.3	72.0	67.3
Feb-Apr 2010	1,391	1,099	833	775	58	558	6.9	73.3	68.1
Change on Quarter	3	2	14	9	6	-11	0.6	1.3	0.8
Change on Year	12	6	31	23	7	-18	0.6	2.3	1.6
MALES									
Feb-Apr 2007	653	555	454	432	22	199	4.7	79.8	76.0
Feb-Apr 2008	662	560	454	431	23	207	5.1	79.4	75.3
Feb-Apr 2009	669	564	439	404	35	230	8.0	75.8	69.6
May-Jul 2009	670	565	439	400	39	232	8.9	75.5	68.6
Aug-Oct 2009	672	566	444	405	39	228	8.8	76.4	69.5
Nov-Jan 2010	674	567	446	408	38	228	8.5	76.2	69.5
Feb-Apr 2010	675	568	460	416	43	216	9.4	78.9	71.3
FEMALES									
Feb-Apr 2007	697	522	374	361	13	323	3.4	68.6	66.2
Feb-Apr 2008	704	525	374	364	10	330	2.7	67.6	65.6
Feb-Apr 2009	710	529	363	348	15	346	4.2	65.9	63.1
May-Jul 2009	711	529	364	349	15	348	4.1	65.7	63.0
Aug-Oct 2009	713	530	369	355	14	343	3.8	66.8	64.3
Nov-Jan 2010	714	531	372	358	14	342	3.7	67.5	64.9
Feb-Apr 2010	716	532	373	359	14	343	3.8	67.3	64.7

Relationship between columns: A=C+F; C=D+E; G=E/C, H=economically active of working age/total population of working age, I=in employment of working age/total population of working age, * **A and B are underlying population estimates and are therefore not seasonally adjusted.**

Figures for Jun-Aug 2006 onwards have been revised to incorporate the latest population estimates.

Please see note on revisions policy in 'Definitions'.

Figures may not sum due to rounding.

Statistical Press Release

Seasonally Adjusted Regional Summary, February - April 2010

Table 3

	Labour Force Survey (LFS) ¹						Employee Jobs ³	Claimant count rate (%) ⁴	Claimant count level Percentage Change over the year	Claimant count level Percentage Change over the month	Jobs Density Indicator ⁵
	Employment		Unemployment		Economically Inactive						
	Rate	Annual Change ²	Rate	Annual Change ²	Rate	Annual Change ²					
	Rate	Annual Change ²	Rate	Annual Change ²	Rate	Annual Change ²					
North East	69.4	0.2	9.3	1.1	23.3	-1.0	1,005	6.5	-5.9	-1.6	0.72
North West	70.6	-0.8	8.6	0.4	22.5	0.5	2,917	5.1	-6.1	-2.0	0.80
Yorkshire & the Humber	70.9	-0.8	9.6	1.5	21.3	-0.4	2,117	5.6	-1.6	-1.7	0.79
East Midlands	73.1	-2.2	7.2	-0.2	21.0	2.6	1,817	4.5	-8.2	-2.9	0.81
West Midlands	70.7	0.0	9.0	-0.4	22.0	0.4	2,246	5.9	-7.3	-2.3	0.81
East	75.4	-1.6	6.6	0.5	19.0	1.2	2,292	3.8	-7.0	-2.8	0.81
London	68.7	-1.1	9.0	0.8	24.4	0.5	3,985	4.4	2.2	-1.3	0.93
South East	76.5	-1.3	6.4	0.8	18.0	0.7	3,615	3.1	-8.3	-3.7	0.86
South West	75.2	-1.9	6.1	0.2	19.8	1.9	2,156	3.0	-12.7	-2.9	0.86
England	72.4	-1.1	7.9	0.5	21.2	0.7	22,149	4.4	-5.4	-2.3	0.84
Wales	69.3	-0.5	8.5	0.9	23.9	-0.3	1,111	5.1	-7.1	-2.4	0.76
Scotland	71.8	-2.8	8.0	1.4	21.7	1.6	2,322	4.8	7.2	-0.7	0.84
Great Britain	72.2	-1.2	7.9	0.6	21.4	0.8	25,582	4.5	-4.4	-2.1	0.83
N Ireland	68.1	1.6	6.9	0.6	26.7	-2.3	701	6.2	15.4	0.2	0.78
United Kingdom	72.1	-1.2	7.9	0.6	21.5	0.7	26,283	4.6	-3.8	-2.0	0.83

¹ Employment and economic inactivity rates are based on working age population (16-59/64); Unemployment rates are based on 16+ population.

² Data refer to percentage point change of respective rate.

³ As at December 2009 (thousands).

⁴ As at May 2010: percentage of the workforce.

⁵ Not seasonally adjusted – data relates to 2007. Jobs Density – total number of jobs in an area divided by the resident population of working age in that area.

Statistical Press Release

DEFINITIONS

Notes to Table on Front Page

pps=percentage points

¹ Levels for all persons aged 16 and over, rates for working age (16-59 females, 16-64 males)

² People aged 16 and over. Unemployment rate=total unemployed as a proportion of the economically active

³ Quarterly Employment Survey

⁴ Seasonally adjusted. Rates are as a percentage of the total workforce.

⁵ Confirmed redundancies in the calendar month.

ILO definition

The definition of unemployment used in the Labour Force Survey (LFS) is in accordance with that promulgated by the International Labour Organisation (ILO). The ILO unemployed include those without a job who were able to start work in the two weeks following their LFS interview and had either looked for work in the four weeks prior to interview or were waiting to start a job they had already obtained.

The definition of ILO employed applies to anyone (aged 16 or over) who has done at least one hour's paid work in the week prior to interview, or has a job they are temporarily away from (e.g. on holiday). Also included are people who do unpaid work in a family business and people on Government-supported employment training schemes.

The ILO measures are particularly useful for examining short term and long term trends over time and key LFS time series data are available both seasonally adjusted and unadjusted.

Sampling variability

The LFS is a sample survey, and as such, estimates obtained from it are subject to sampling variability. If we drew many samples each would give a different result. The ranges shown for the LFS data in table 1 represent 95% confidence intervals i.e. we would expect that in 95% of samples the range would contain the true value. These confidence intervals have been calculated using data that is unadjusted for seasonality, with the relevant sampling errors produced applied to the seasonally adjusted data.

If the 'annual change' for an estimate has increased or decreased by more than the 'sampling variability of the change', this change would be statistically significant. However, for the period February - April 2010 the annual change in the employment, unemployment and economic inactivity categories were not statistically significant at this level.

Please see attached link for further LFS notes and definitions.

[Labour Force Survey Notes and Definitions](#)

LFS revisions

LFS microdata has recently been revised to incorporate the latest population estimates. The revision effect LFS data from the period June to August 2006 onwards and were first published in February 2010. The magnitude of the revisions were relatively small, with the revisions to the unemployment rate falling within +/-0.05 percentage points and the working age employment rate within +/- 0.1 percentage points. The procedures being applied to the NI LFS results were consistent with those applied by the Office for National Statistics to other UK regions.

More information on the revision policy concerning labour market statistics can be found through the link below:

[Labour market statistics revisions policy](#)

New State Pension Age

The state pension age for women is set to rise between 2010 and 2020. More information on the implications of this change on labour market statistics in Northern Ireland can be found through the link below:

<http://www.detini.gov.uk/deti-stats-index/stats-national-statistics/user-consultation-and-information.htm>

Claimant Count definition

Claimant Count figures are derived from records of claimants held at Social Security Offices. The term 'claimants' in the claimant count is used to include those who claim Jobseeker's Allowance (JSA) and National Insurance credits. The figures include severely disabled claimants, but exclude students seeking vacation work and the temporarily stopped. The Claimant Count is a very up-to-date measure of those eligible to claim a specific unemployment related benefit and data are available for a range of geographical sub-regions (e.g. District Council Areas, Parliamentary Constituency Areas, Travel-to-Work Areas and Wards). It also provides seasonally adjusted and unadjusted data and as a result is a useful measure for examining both short-term and long-term trends.

Seasonally Adjusted claimant count figures are provisional when published and subject to revision, mainly the following month and are only available at Northern Ireland level. Seasonally Adjusted totals are subject to an annual update (usually April) to take account of latest assessment trends. The procedures being applied to the NI Seasonally Adjusted claimant count results are consistent with those applied by the Office for National Statistics to other UK regions.

[Background Notes to the Quarterly Employment Survey \(QES\)](#)

[Definitions for the Annual Survey of Hours and Earnings ASHE](#)

Government Targets

Data from the Labour Force Survey (LFS) and the Quarterly Employment Survey (QES) are used in the measurement of targets set in the Northern Ireland Executive's Programme for Government (PSA targets) See www.pfgbudgetni.gov.uk/finalpfg.pdf for further details. The LFS and QES data feed into productivity estimates for NI and are therefore indirectly used to measure progress towards PSA 1: Productivity growth. In addition, LFS data is used to measure the proportion of the working age population qualified to Skill levels 2 and 3. This data therefore feeds into the measurement of PSA 2: Skills for prosperity.

Details of progress towards these targets can be found at:

www.pfgbudgetni.gov.uk/pfg_delivery_report_q4_08_09_final_-_pdf_version-5.pdf

For further information:

AN ELECTRONIC VERSION OF THIS DOCUMENT WITH ASSOCIATED HYPERLINKS IS AVAILABLE ON THE HOME PAGE OF THE BRANCH WEBSITE AT:

www.statistics.detini.gov.uk

You can also contact Statistics Research Branch by: -

Writing to:

Martin Monaghan
Statistics Research Branch, Room 110,
Netherleigh, Massey Avenue, Belfast BT4 2JP.

Tel: (028) 9052 9421
Fax: (028) 9052 9658
Textphone: (028) 9052 9304
Email: statistics@detini.gov.uk