



## STATISTICAL PRESS RELEASE

**14 July 2010**

**Coverage**

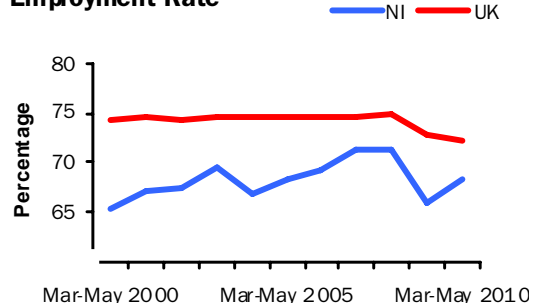
Northern Ireland, unless otherwise stated

**Theme**

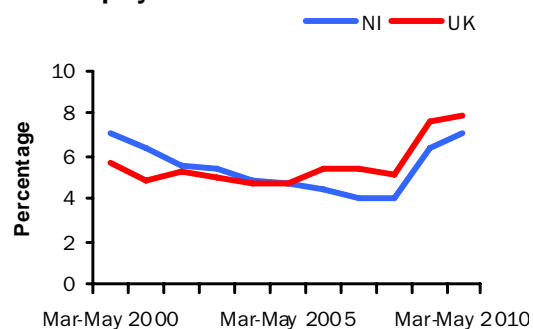
Labour Market

**Seasonally Adjusted Working Age**

**Employment Rate**



**Seasonally Adjusted  
Unemployment Rate**



**Issued by:**

Statistics Research Branch, DETI,  
Tel: 028 90529421  
Email: [statistics@detini.gov.uk](mailto:statistics@detini.gov.uk)  
Enquiries by the media should be directed to:  
Press Office, DETI,  
Tel: 028 90529604  
Email: [pressoffice@detini.gov.uk](mailto:pressoffice@detini.gov.uk)

[www.statistics.detini.gov.uk](http://www.statistics.detini.gov.uk)

**Next publication date: 11<sup>th</sup> August 2010**



### Labour Market Statistics – July 2010

Seasonally adjusted Labour Force Survey (LFS) data for Northern Ireland for the period March – May 2010 estimated an increase over the quarter in the number of employed and unemployed persons, while there was a fall in the number of economically inactive. The June Claimant Count recorded an increase of 600 claimants from the previous month and now stands at 56,100. This represented the largest monthly increase since January 2010.

In the latest reference period, the working age employment rate was estimated at 68.3%, up 0.4 percentage points over the quarter, up 2.4 percentage points over the year, but down 2.9 percentage points over two years.

The unemployment rate was 7.0%, up 0.6 percentage points over the quarter and 0.7 percentage points over the year. The NI rate remained below the UK (7.8%), European Union (9.7%) and Republic of Ireland (13.2%) rates for April 2010.

The working age economic inactivity rate in NI fell by 0.9 percentage points over the quarter to 26.4%. However, it remained above the UK average rate (21.3%) and was the highest of the twelve UK regions.

The LFS is a sample survey with an associated degree of sampling error (see table 1 overleaf for details).

The more recent seasonally adjusted claimant count stood at 56,100 (6.3%) at June 2010 representing an increase of 600 from the previous month's figure, an increase of 500 over three months and an increase of 6,700 over the year. Over the month to June 2010, the NI Claimant Count level increased by 1.1%, while the UK average decreased by 1.4%.

The Department was notified of 224 proposed redundancies in the period mid June to mid July and there were 135 confirmed redundancies in June 2010.

The total number of employee jobs in Northern Ireland at March 2010 was 700,210 (Quarterly Employment Survey), down 1,280 jobs (-0.2%) over the quarter and 13,260 jobs (-1.9%) over the year.

**NI seasonally adjusted data**

	Reference period	Levels	Rates (%)	Levels	Rates (pps)
				Change on quarter	
Employment <sup>1</sup>	Mar-May 2010	776,000	68.3%	2,000	0.4
Unemployment <sup>2</sup>	Mar-May 2010	59,000	7.0%	6,000	0.6
Economically Active <sup>1</sup>	Mar-May 2010	835,000	73.6%	8,000	0.9
Economically Inactive <sup>1</sup>	Mar-May 2010	557,000	26.4%	-5,000	-0.9
Employee Jobs <sup>3</sup>	March 2010	700,210	-	-1,280	-
				Change on month	
Claimant Count <sup>4</sup>	June 2010	56,100	6.3%	+600	0.1
Redundancies <sup>5</sup>	June 2010	135	-	-	-

For footnotes, see 'Definitions' section (back page)

# Labour Market

## Statistical Press Release

Seasonally adjusted Labour Force Survey (LFS) data for Northern Ireland for the period March - May 2010 estimated an increase over the quarter in the number of employed and unemployed persons, while there was a fall in the number of economically inactive. The seasonally adjusted claimant count in June 2010 increased by 600 over the month to 56,100. The Department was notified of 224 proposed redundancies in the latest reference period and 135 confirmed redundancies in June 2010.

### Employment

The number of persons in employment in the period March - May 2010 was estimated at 776,000. This represented increases of 2,000 over the quarter and 29,000 over the year. The working age employment rate was estimated at 68.3%, up 0.4 percentage points over the quarter and 2.4 percentage points over the year. However, NI's working age employment rate remained well below the UK average (72.3%) and was the lowest of the twelve UK regions.

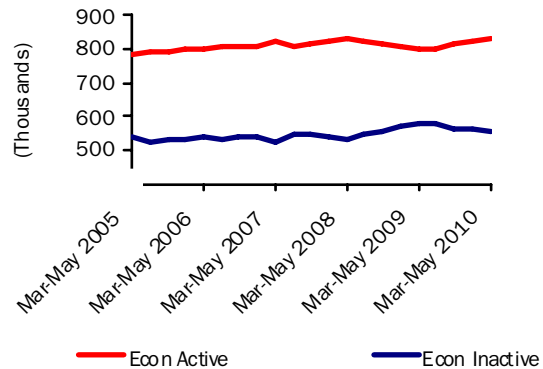
### Unemployment

The unemployment rate for the period March - May 2010 was estimated at 7.0%, up 0.6 percentage points over the quarter and 0.7 points over the year. The number of unemployed persons was estimated at 59,000, up 6,000 over the quarter and 8,000 over the year. The male unemployment rate (9.6%) was over double the female rate (4.0%) in March - May 2010.

Unadjusted figures show that 40.9% of the unemployed have been unemployed for 1 year or more – up 12.8 percentage points over the year. They also estimate the unemployment rate for 18-24 year olds at 17.4% – up 0.6 percentage points over the year.

### Seasonally Adjusted Labour Market Summary for Northern Ireland (16+)

Figure 1



### Economically Inactive

The seasonally adjusted number of economically inactive persons in the period March - May 2010 was estimated at 557,000. This figure has decreased by 5,000 over the quarter and by 25,000 over the year.

The working age economic inactivity rate for NI stands at 26.4%. This is significantly higher than the UK average rate (21.3%) and is the highest of the twelve UK regions. Unadjusted figures estimate that 33% of the economically inactive of working age in NI are students, 29% are sick/disabled, 24% are looking after the family/home, 6% are retired and 8% are 'other' reason.

Unadjusted figures also show that while 93% of the inactive do not want work, the remaining 7% want employment but do not satisfy the full ILO job search criteria (by actively seeking work and being available to start a job). The number of economically inactive persons who want a job stood at 42,000 in the latest period.

### Northern Ireland Labour Market Summary (seasonally adjusted)

Table 1

	Period	Estimate	Sampling Variability of estimate	Change over year	Sampling Variability of change
Employment	Mar-May 2010	776,000	+/-22,000	29,000	+/-28,000
Unemployment	Mar-May 2010	59,000	+/-10,000	8,000	+/-13,000
Economically inactive	Mar-May 2010	557,000	+/-20,000	-25,000	+/-25,000
Unemployment rate	Mar-May 2010	7.0%	+/-1.3pps	0.7pps	+/-1.7pps
Employment rate <sup>1</sup>	Mar-May 2010	68.3%	+/-1.7pps	2.4pps	+/-2.3pps
Economic inactivity rate <sup>1</sup>	Mar-May 2010	26.4%	+/-1.7pps	-3.2pps	+/-2.2pps
Claimant Count	June 2010	56,100		6,700	

Note: pps = percentage points, <sup>1</sup>Rates based on working age population (16-59/64), see Definitions for details.

# Statistical Press Release

Estimates from the LFS have an associated degree of statistical error as they are based on a sample of the population. The annual changes for the main LFS categories of employment, unemployment and economic inactivity were tested for statistical significance. The results showed that the annual change in the employment and economic inactivity figures were statistically significant i.e. the recorded change exceeded the variability expected from a sample survey of this size (see table 1 and Section 9 for details).

## Unemployment Regional Comparison

The seasonally adjusted unemployment rate in NI (7.0%) remained below the UK average rate (7.8%) and was the fourth lowest rate among the twelve UK regions. The NI rate also compared favourably to the European Union rate (9.7%) and the Republic of Ireland rate (13.2%) for April 2010. However, the annual increase in the NI unemployment rate (+0.7 percentage points) was greater than the increase in the UK rate (+0.3 percentage points).

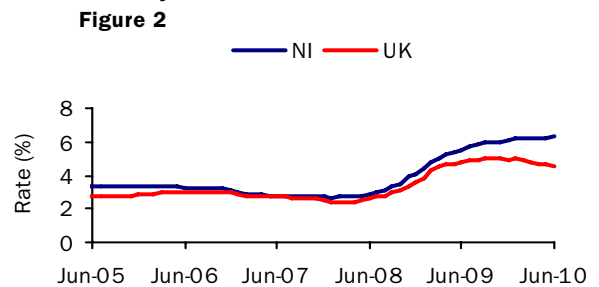
## Claimant Count

The more recent seasonally adjusted claimant count increased by 600 over the month to June 2010 to 56,100 (6.3% of the workforce). This compared to an increase of 100 in the previous month. Over the year the claimant count increased by 6,700 (13.6%) and the workforce unemployment rate increased by 0.8 percentage points.

## Claimant Count Regional Comparison

The seasonally adjusted claimant count rate in NI (6.3%) was higher than the UK average rate (4.5%) and was the second highest rate among the twelve UK regions. Over the month to June 2010 the NI Claimant Count level increased by 1.1% (600 claimants), while the UK average decreased by 1.4% (Figure 2). NI showed the highest percentage increase of all the UK regions. Over the year the NI Claimant Count level increased by 13.6%, which was higher than the UK average (-6.4%) and was the highest annual increase among the twelve UK regions.

**Seasonally Adjusted Claimant Count Monthly Rates**



## Claimant count rates for District Council Areas

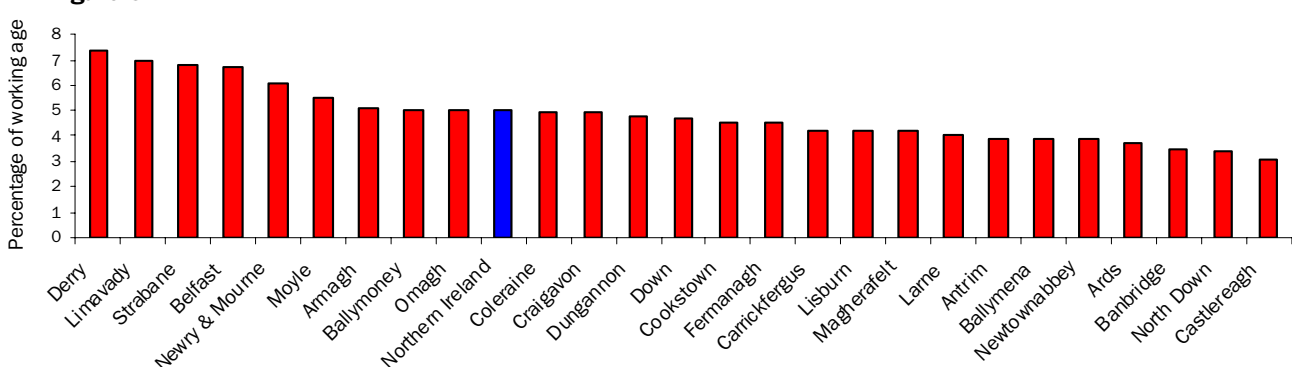
Figure 3 (unadjusted numbers as a percentage of the resident working age population) show that the highest rates at June 2010 were in Derry (7.4%), Limavady (7.0%) and Strabane (6.8%). Those that showed the highest percentage increase in levels over the year to June 2010 were Newry & Mourne (27.5%), Castlereagh (22.6%) and Armagh (20.4%). For further District Council data please see section 3 of the Labour Market Report.

## Employment and Training Measures

The Department for Employment and Learning (DEL) provides a number of services and programmes to help jobseekers find work. In September 2008 Steps to Work, the Department's new flexible approach to helping people to find work, was introduced in Northern Ireland and subsumes the main New Deal programmes. Overall, there has been an increase of 66.5% (4,631 persons) to 11,593 over the year to June 2010 in the number of those claimants who are eligible for mandatory participation on Steps to Work. However, anyone over 18 years old (or lone parents aged 16 years old or over) who is not working (or working less than 16 hours each week) is eligible. New Deal statistics are currently accessible via the DEL web link below - Steps to Work statistics will be published when data is available.

[www.delni.gov.uk/index/statistics-and-research/labour-market/new-deal-statistics.htm](http://www.delni.gov.uk/index/statistics-and-research/labour-market/new-deal-statistics.htm)

**Unadjusted Claimant Count Rates By District Council Area**



# Statistical Press Release

## Redundancies

The Department was notified of 224 proposed redundancies over the period mid June 2010 to mid July 2010. This compares to 81 proposed redundancies notified to the Department in the previous monthly period.

There were 135 confirmed redundancies in the month of June (Figure 5). Over the latest twelve monthly period there were a total of 2,994 confirmed redundancies, a decrease of 36% from the previous year (4,697). The highest number of confirmed redundancies took place in Belfast District Council area which had 33.0% (987) of all redundancies over the year.

Over the latest twelve month period there were a total of 3,347 proposed redundancies, a decrease of 43% from the previous year (5,878).

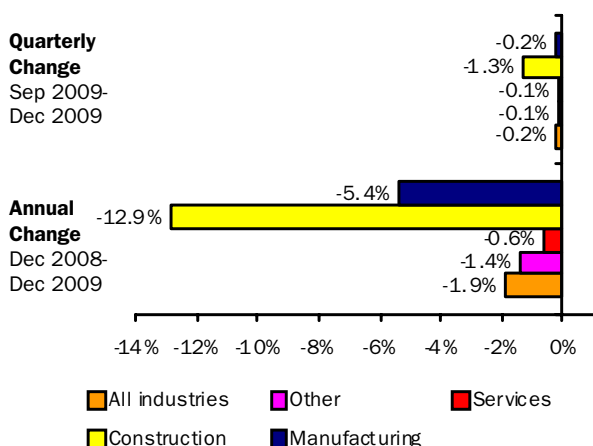
Currently there are 1,073 outstanding redundancies (that is, proposed but not confirmed), which is 48% lower than this time last year (2,052).

Note that since all proposed redundancies do not actually take place, the confirmed total provides a better indication of real job losses

## Quarterly Employment Survey

The QES provides an estimate of the number of jobs (rather than persons in employment) and is the preferred measure of change in employee jobs. The estimated seasonally adjusted employee jobs total in Northern Ireland at March 2010 was 700,210. This represents a decrease of 1,280 over the quarter and a decrease of 13,260 over the year.

**Annual and Quarterly changes in employee jobs (seasonally adjusted)**  
Figure 4

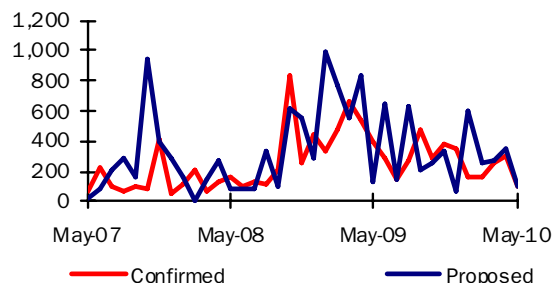


The seasonally adjusted quarterly change consisted of decreases in Manufacturing (-150), in the Service sector (-660) and in Construction (-460). Other industries also decreased over the quarter (-20).

## Confirmed and Proposed Redundancies

May 07 - May 10

Figure 5

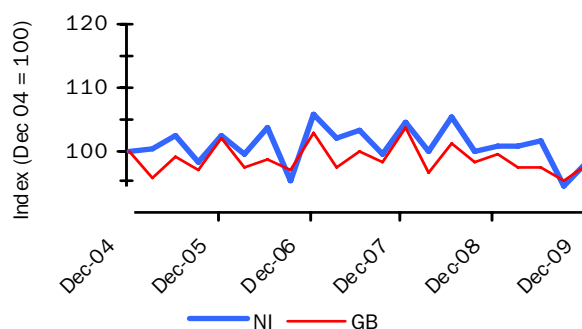


## Hours Worked

The total workforce hours worked per week in Northern Ireland in December 2009 was estimated at 25.5 million hours, representing a decrease of 2.7% over the year (compared with a decrease of 1.9% in GB). Between December 2004 and December 2009, NI's total workforce hours worked per week decreased by 1.9%, compared to a 2.4% fall in GB (Figure 6). In the three months to April 2010, the average actual weekly hours worked in NI was 33.3 hours, which was higher than the UK average (31.9).

## Index of total workforce hours worked per week, NI & GB

Figure 6



Source: Employment, Earnings and Productivity Division, ONS

## Annual Survey of Hours and Earnings (ASHE)

Earning results for April 2009, which were released on 12th November 2009, show that yearly growth in median gross weekly earnings for all employees (i.e. both full- and part-time) in NI was 3.4% (to £356.7) compared to 2.2% in the UK (to £397.3). NI full-time employees' gross weekly earnings in April 2009 were £439.1, which was approximately 90% of the figure in the UK (£488.7). NI full-time earnings increased by 5.1% over the period, compared with an increase of 2.0% in the UK.

Full-time private sector median gross weekly earnings in NI increased at a marginally faster rate (1.6% to £383.0) than in the UK, where growth was 1.0% over the year (to £464.7). This represented little change in the NI/UK private sector pay gap, from 82.0% of the UK figure at April 2008 to 82.4% at April 2009.

# Statistical Press Release

**Labour Market Structure – Seasonally adjusted  
Table 2**

(Thousands/Percentage)

	Total aged 16 and over	Total persons of working age 16-59/64	All aged 16+					All working age 16-59/64	
			Total economically active	Total in employment	Unemployed	Economically inactive	Unemployment rate (%)	Activity rate 16-59/64 (%)	Employment rate (%) 16-59/64
	A	B	C	D	E	F	G	H	I
<b>ALL PERSONS</b>									
Mar-May 2007	1,352	1,077	827	793	34	525	4.1	74.3	71.2
Mar-May 2008	1,367	1,086	835	801	34	532	4.1	74.3	71.2
Mar-May 2009	1,379	1,093	798	747	51	582	6.4	70.5	65.9
Jun-Aug 2009	1,383	1,095	804	748	56	578	7.0	70.9	65.8
Sep-Nov 2009	1,386	1,097	820	766	54	566	6.6	72.2	67.4
Dec-Feb 2010	1,389	1,098	828	774	53	561	6.4	72.8	67.9
Mar-May 2010	1,392	1,100	835	776	59	557	7.0	73.6	68.3
<b>Change on Quarter</b>	<b>3</b>	<b>2</b>	<b>8</b>	<b>2</b>	<b>6</b>	<b>-5</b>	<b>0.6</b>	<b>0.9</b>	<b>0.4</b>
<b>Change on Year</b>	<b>13</b>	<b>6</b>	<b>38</b>	<b>29</b>	<b>8</b>	<b>-25</b>	<b>0.7</b>	<b>3.2</b>	<b>2.4</b>
<b>MALES</b>									
Mar-May 2007	654	555	450	430	21	204	4.6	79.2	75.5
Mar-May 2008	662	561	458	433	24	205	5.3	79.9	75.6
Mar-May 2009	669	565	437	401	36	232	8.2	75.4	69.1
Jun-Aug 2009	671	565	442	399	42	229	9.6	76.0	68.5
Sep-Nov 2009	673	566	446	407	39	226	8.8	76.6	69.7
Dec-Feb 2010	674	567	450	411	40	224	8.8	77.2	70.2
Mar-May 2010	676	568	458	414	44	218	9.6	78.6	70.9
<b>FEMALES</b>									
Mar-May 2007	698	522	376	363	13	321	3.5	69.1	66.7
Mar-May 2008	704	526	377	368	10	327	2.5	68.4	66.6
Mar-May 2009	710	529	360	346	15	350	4.1	65.2	62.5
Jun-Aug 2009	712	530	362	348	14	349	3.9	65.5	62.9
Sep-Nov 2009	713	530	374	359	15	339	4.0	67.6	64.9
Dec-Feb 2010	715	531	377	363	14	338	3.6	68.0	65.5
Mar-May 2010	716	532	377	362	15	339	4.0	68.3	65.5

Relationship between columns: A=C+F; C=D+E; G=E/C, H=economically active of working age/total population of working age, I=in employment of working age/total population of working age, \* **A and B are underlying population estimates and are therefore not seasonally adjusted.**

Figures for Jun-Aug 2006 onwards have been revised to incorporate the latest population estimates.

Please see note on revisions policy in 'Definitions'.

Figures may not sum due to rounding.

# Statistical Press Release

## Seasonally Adjusted Regional Summary, March - May 2010

Table 3

	Labour Force Survey (LFS) <sup>1</sup>						Employee Jobs <sup>3</sup>	Claimant count rate (%) <sup>4</sup>	Claimant count level Percentage Change over the year	Claimant count level Percentage Change over the month	Jobs Density Indicator <sup>5</sup>
	Employment		Unemployment		Economically Inactive						
	Rate	Annual Change <sup>2</sup>	Rate	Annual Change <sup>2</sup>	Rate	Annual Change <sup>2</sup>					
	Rate	Annual Change <sup>2</sup>	Rate	Annual Change <sup>2</sup>	Rate	Annual Change <sup>2</sup>					
North East	70.4	2.0	9.4	0.2	22.2	-2.3	1,005	6.6	-6.4	0.4	0.72
North West	70.9	-0.3	8.3	0.1	22.4	0.3	2,917	5.1	-8.3	-1.2	0.80
Yorkshire & the Humber	71.7	-0.1	9.1	0.5	20.8	-0.4	2,117	5.4	-6.1	-2.6	0.79
East Midlands	73.4	-2.0	7.2	0.0	20.7	2.3	1,817	4.5	-10.8	-2.1	0.81
West Midlands	71.2	1.2	8.6	-1.6	21.8	0.0	2,246	5.8	-10.0	-1.7	0.81
East	75.7	-1.2	6.6	0.3	18.8	1.0	2,292	3.7	-9.3	-1.5	0.81
London	69.1	-0.2	9.3	0.6	23.7	-0.3	3,985	4.4	-0.7	-1.2	0.93
South East	76.1	-1.4	6.2	0.2	18.8	1.3	3,615	3.0	-11.4	-2.4	0.86
South West	75.5	-1.1	6.3	0.1	19.2	1.1	2,156	3.0	-14.3	-1.5	0.86
England	72.7	-0.5	7.8	0.1	21.0	0.5	22,149	4.4	-8.0	-1.6	0.84
Wales	68.9	-0.8	9.1	1.5	23.8	-0.5	1,111	5.0	-9.9	-1.9	0.76
Scotland	72.1	-2.3	8.1	1.4	21.2	1.1	2,322	4.8	4.3	-0.4	0.84
Great Britain	72.5	-0.7	7.9	0.3	21.1	0.5	25,582	4.4	-7.1	-1.5	0.83
N Ireland	68.3	2.4	7.0	0.7	26.4	-3.2	701	6.3	13.6	1.1	0.78
United Kingdom	72.3	-0.6	7.8	0.3	21.3	0.4	26,281	4.5	-6.4	-1.4	0.83

<sup>1</sup> Employment and economic inactivity rates are based on working age population (16-59/64); Unemployment rates are based on 16+ population.

<sup>2</sup> Data refer to percentage point change of respective rate.

<sup>3</sup> As at December 2009 (thousands).

<sup>4</sup> As at June 2010: percentage of the workforce.

<sup>5</sup> Not seasonally adjusted – data relates to 2007. Jobs Density – total number of jobs in an area divided by the resident population of working age in that area.

## DEFINITIONS

### Notes to Table on Front Page

pps=percentage points

<sup>1</sup> Levels for all persons aged 16 and over, rates for working age (16-59 females, 16-64 males)

<sup>2</sup> People aged 16 and over. Unemployment rate=total unemployed as a proportion of the economically active

<sup>3</sup> Quarterly Employment Survey

<sup>4</sup> Seasonally adjusted. Rates are as a percentage of the total workforce.

<sup>5</sup> Confirmed redundancies in the calendar month.

### ILO definition

The definition of unemployment used in the Labour Force Survey (LFS) is in accordance with that promulgated by the International Labour Organisation (ILO). The ILO unemployed include those without a job who were able to start work in the two weeks following their LFS interview and had either looked for work in the four weeks prior to interview or were waiting to start a job they had already obtained.

The definition of ILO employed applies to anyone (aged 16 or over) who has done at least one hour's paid work in the week prior to interview, or has a job they are temporarily away from (e.g. on holiday). Also included are people who do unpaid work in a family business and people on Government-supported employment training schemes.

The ILO measures are particularly useful for examining short term and long term trends over time and key LFS time series data are available both seasonally adjusted and unadjusted.

### Sampling variability

The LFS is a sample survey, and as such, estimates obtained from it are subject to sampling variability. If we drew many samples each would give a different result. The ranges shown for the LFS data in table 1 represent 95% confidence intervals i.e. we would expect that in 95% of samples the range would contain the true value. These confidence intervals have been calculated using data that is unadjusted for seasonality, with the relevant sampling errors produced applied to the seasonally adjusted data.

If the 'annual change' for an estimate has increased or decreased by more than the 'sampling variability of the change', this change would be statistically significant. The annual changes for the main LFS categories of employment, unemployment and economic inactivity were tested for statistical significance. The results for March - May 2010 showed that the annual change in the employment and economic inactivity levels were statistically significant at the 95% level.

## Statistical Press Release

Please see attached link for further LFS notes and definitions.

[Labour Force Survey Notes and Definitions](#)

### LFS revisions

LFS microdata has recently been revised to incorporate the latest population estimates. The revision effect LFS data from the period June to August 2006 onwards and were first published in February 2010. The magnitude of the revisions were relatively small, with the revisions to the unemployment rate falling within +/-0.05 percentage points and the working age employment rate within +/- 0.1 percentage points. The procedures being applied to the NI LFS results were consistent with those applied by the Office for National Statistics to other UK regions.

More information on the revision policy concerning labour market statistics can be found through the link below:

[Labour market statistics revisions policy](#)

### New State Pension Age

The state pension age for women is set to rise between 2010 and 2020. More information on the implications of this change on labour market statistics in Northern Ireland can be found through the link below:

<http://www.detini.gov.uk/deti-stats-index/stats-national-statistics/user-consultation-and-information.htm>

### Claimant Count definition

Claimant Count figures are derived from records of claimants held at Social Security Offices. The term 'claimants' in the claimant count is used to include those who claim Jobseeker's Allowance (JSA) and National Insurance credits. The figures include severely disabled claimants, but exclude students seeking vacation work and the temporarily stopped. The Claimant Count is a very up-to-date measure of those eligible to claim a specific unemployment related benefit and data are available for a range of geographical sub-regions (e.g. District Council Areas, Parliamentary Constituency Areas, Travel-to-Work Areas and Wards). It also provides seasonally adjusted and unadjusted data and as a result is a useful measure for examining both short-term and long-term trends.

Seasonally Adjusted claimant count figures are provisional when published and subject to revision, mainly the following month and are only available at Northern Ireland level. Seasonally Adjusted totals are subject to an annual update (usually April) to take account of latest assessment trends.

[Background Notes to the Quarterly Employment Survey \(QES\)](#)

[Definitions for the Annual Survey of Hours and Earnings ASHE](#)

### **Government Targets**

Data from the Labour Force Survey (LFS) and the Quarterly Employment Survey (QES) are used in the measurement of targets set in the Northern Ireland Executive's Programme for Government (PSA targets) See [www.pfgbudgetni.gov.uk/finalpfg.pdf](http://www.pfgbudgetni.gov.uk/finalpfg.pdf) for further details. The LFS and QES data feed into productivity estimates for NI and are therefore indirectly used to measure progress towards PSA 1: Productivity growth. In addition, LFS data is used to measure the proportion of the working age population qualified to Skill levels 2 and 3. This data therefore feeds into the measurement of PSA 2: Skills for prosperity.

Details of progress towards these targets can be found at:

[www.pfgbudgetni.gov.uk/pfg\\_delivery\\_report\\_q4\\_08\\_09\\_final\\_-\\_pdf\\_version-5.pdf](http://www.pfgbudgetni.gov.uk/pfg_delivery_report_q4_08_09_final_-_pdf_version-5.pdf)

### **For further information:**

**AN ELECTRONIC VERSION OF THIS DOCUMENT WITH ASSOCIATED HYPERLINKS IS AVAILABLE ON THE HOME PAGE OF THE BRANCH WEBSITE AT:**

[www.statistics.detini.gov.uk](http://www.statistics.detini.gov.uk)

You can also contact Statistics Research Branch by: -

### **Writing to:**

Martin Monaghan  
Statistics Research Branch, Room 110,  
Netherleigh, Massey Avenue, Belfast BT4 2JP.

Tel: (028) 9052 9421  
Fax: (028) 9052 9658  
Textphone: (028) 9052 9304  
Email: [statistics@detini.gov.uk](mailto:statistics@detini.gov.uk)