



Northern Ireland

Quarterly Employment Survey (QES) Supplement

September 2009 Published 16/12/2009

- The QES is a business survey that has been carried out in Northern Ireland since 1978. The QES has a sample size of approximately 5,500 and covers all employers with at least 25 employees, all public sector employers and a representative sample of smaller firms.
- The September 2009 seasonally adjusted employee jobs figure stands at 701,730.
- This represents a seasonally adjusted decrease of 0.7% (or 5,010 jobs) from the revised June 2009 estimate of 706,730.
- Over the quarter seasonally adjusted employee jobs decreased in the Service Sector by 0.3% (1,640 jobs), in the Construction Sector by 4.6% (1,720 jobs), and in the Manufacturing sector by 2.0% (1,540 jobs). Jobs in "Other Industries" also decreased by 0.5% (110 Jobs) over the quarter.
- The September 2009 seasonally unadjusted figure stands at 697,870.
- This represents a decrease of 1.1% (7,960 jobs) since June 2009 and a decrease of 3.5% (25,660 jobs) in the past year.
- Over the year, September 2008 to September 2009, the unadjusted employee jobs figure for Construction decreased by 16.8% (7,260 jobs), while Manufacturing employee jobs decreased by 10.2% (8,400 jobs) and employee jobs in the Service Sector decreased by 1.6% (9,230 jobs)
- The net quarterly decrease in employee jobs (7,960) is comprised of decreases in both the number of full-time employee jobs (6,240) and part-time employee jobs (1,730).



A NATIONAL STATISTICS PUBLICATION

National Statistics are produced to high professional standards set out in the National Statistics Code of Practice. They undergo regular quality assurance reviews to ensure that they meet customer needs. They are produced free from any political interference.

For general enquiries about National Statistics, contact
The National Statistics Public Enquiry Service on **0845 601 3034**
minicom: 01633 812399
E-mail: info@statistics.gov.uk
Fax: 01633 652747
Letters: Room 1015, Government Buildings, Cardiff Road, Newport,
Gwent, South Wales NP10 8XG

You can also find National Statistics on the Internet – go to
www.statistics.gov.uk

Department of Enterprise,
Trade and Investment

**Northern Ireland
Quarterly Employment Survey (QES)
Supplement**

September 2009

Crown Copyright

Contents

1

Executive Summary
Page 1

2

NI Employee Jobs
Page 2-4

3

2-Digit Breakdown
Pages 5-7

4

Public Sector Data
Page 8

5

Unadjusted & Seasonally Adjusted Series
Page 9-10

6

Special Features
Page 11-12

7

Notes to Editors
Page 13

Executive Summary

1

Introduction

This bulletin presents data from the Northern Ireland Quarterly Employment Survey (QES), which is conducted by Statistics Research Branch of the Department of Enterprise, Trade and Investment (DETI).

The QES provides short-term employee jobs estimates for Northern Ireland, which are then used by the Office for National Statistics (ONS) to feed into the calculation of the quarterly workforce jobs estimates for the United Kingdom as a whole.

The QES covers all public sector bodies, all private sector firms with 25 or more employees and a sample of the remainder. The sample size is such that estimates of total employee jobs should be accurate to within +/- 1% of the Census of Employment total. The survey collects information on the number of males/females in full-time and part-time employment by business activity. The results are then collated into industry classes using the 2007 Standard Industrial Classification (SIC07).

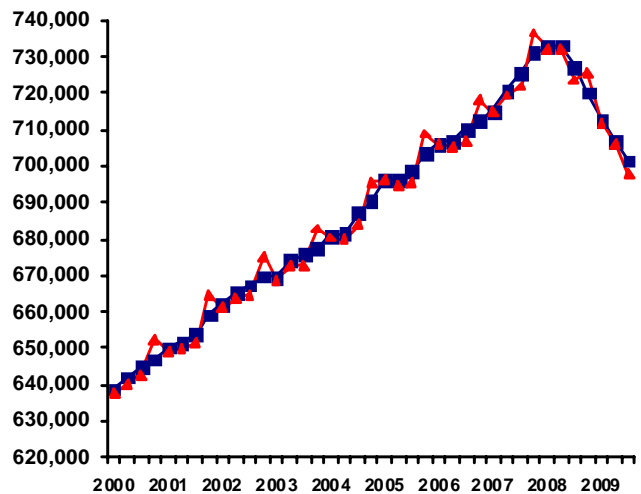
It should be noted that the survey counts the number of jobs rather than the number of persons with jobs. For example, a person holding both a full-time job and part-time job, or someone with two part-time jobs, will be counted twice.

Seasonally Adjusted

The September 2009 seasonally adjusted employee jobs figure stands at 701,730.

This represents a seasonally adjusted decrease of 0.7% (or 5,010 jobs) from the revised June 2009 estimate of 706,730.

Over the quarter seasonally adjusted employee jobs decreased in the Service Sector by 0.3% (1,640 jobs), in the Construction Sector by 4.6% (1,720 jobs), and in the Manufacturing sector by 2.0% (1,540 jobs). Jobs in "Other Industries" also decreased by 0.5% (110 Jobs) over the quarter.



■ Seasonally Adjusted ▲ Unadjusted

Unadjusted

The September 2009 seasonally unadjusted figure stands at 697,870.

This represents a decrease of 1.1% (7,960 jobs) since June 2009 and a decrease of 3.5% (25,660 jobs) in the past year.

Over the year, September 2008 to September 2009, the unadjusted employee jobs figure for Construction decreased by 16.8% (7,260 jobs), while Manufacturing employee jobs decreased by 10.2% (8,400 jobs) and employee jobs in the Service Sector decreased by 1.6% (9,230 jobs)

Date of Next Publication

Quarterly Employment Survey results for Quarter 4 2009 will be published on Wednesday 17th March 2010.

NI Employee Jobs

2

Data are NOT adjusted for seasonality unless otherwise stated

Employee Jobs from the Quarterly Employment Survey

Table 1.1 below provides a summary of the latest results from the Quarterly Employment Survey. It shows that in September 2009 there were an estimated 697,870 employee jobs in Northern Ireland.

Table 1.1 NI Employee Jobs, Full-time/Part-time Split, September 2009

	Male		Female		Total	% change in total	
	Full Time	Part Time	Full Time	Part Time		Since last quarter	Since last year
Manufacturing	56,160	1,690	13,230	3,020	74,090	-1.5%	-10.2%
Construction	30,450	1,170	2,680	1,540	35,840	-4.5%	-16.8%
Services	171,660	54,380	167,700	173,410	567,150	-0.9%	-1.6%
Other ¹	10,340	7,630	1,520	1,300	20,780	-0.5%	-3.6%
Total	268,610	64,860	185,130	179,260	697,870	-1.1%	-3.5%

¹ Covers Industry Sections A, B, C and E

* Figures are rounded to the nearest 10 and may not sum due to rounding

Fig 1.1 shows the Male/Female, Full-time/Part-time breakdown of employee jobs in Northern Ireland, as at September 2009. Female employee jobs account for just over half of all employee jobs in NI (364,390 female employee jobs, compared to 333,480 males). There is, however, a significant difference in the working patterns of male and female employees. Almost half (49.2%) of female employee jobs are part-time, whereas only 19.5% of male employees work on a part-time basis.

Fig 1.1 Composition of Employee Jobs, September 2009

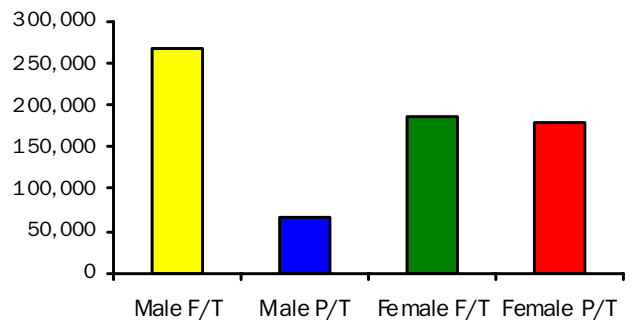


Fig 1.2 shows the annual and quarterly changes in employee jobs. Between June 2009 and September 2009 the number of employee jobs in NI fell by 1.1% (-7,960 jobs). This consisted of decreases in the Service Sector (-5,020), in Construction (-1,690) and in Manufacturing (-1,150).

Between September 2008 and September 2009 the number of employee jobs decreased by 3.5% (25,660). This consisted of decreases in Construction (-7,260), Manufacturing (-8,400) and the Service Sector (-9,230), and also in Other Industries (-780).

Fig 1.2 Annual and Quarterly Changes in Employee Jobs

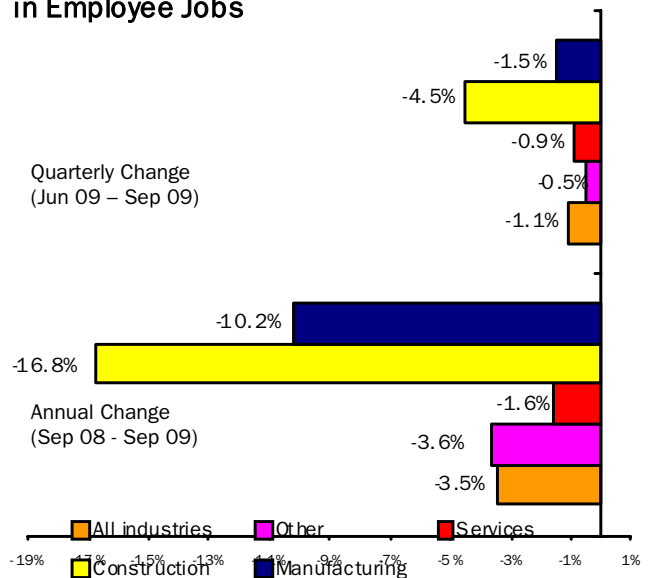


FIG 1.3 Employee Jobs, Male/Female, Full-Time/Part-Time Split, September 2009

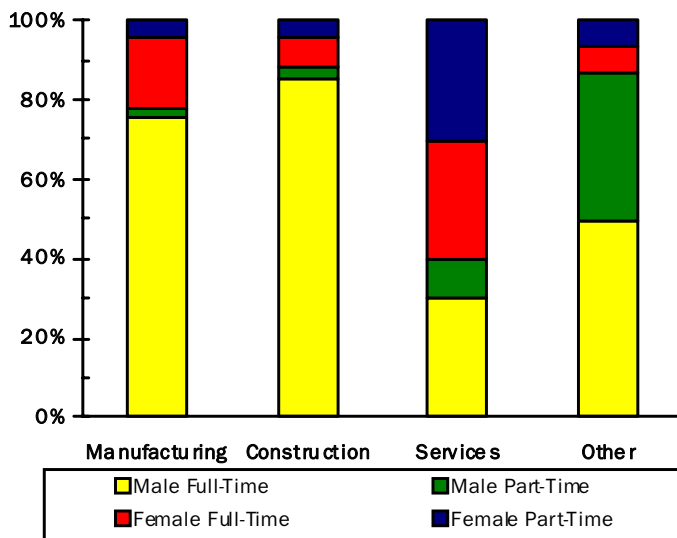


Fig 1.3 shows the male/female, full-time/part-time split for each broad industry sector within Northern Ireland. It highlights the large proportion of employee jobs in the Manufacturing and Construction Sectors that are occupied by male full-time employees (75.8% for Manufacturing, 85.0% for Construction). In contrast, females occupy 60.1% of the 567,150 employee jobs within the Service Sector. These female jobs within Services are in turn divided fairly evenly between full-time (49.2%) and part-time (50.8%) workers.

Table 1.2 on page 4 shows Employee Jobs by Industry Section for September 2009. Comparative figures for the previous quarter (June 2009) and for the previous year (September 2008) are also included.

Table 1.2 N.I. Employee Jobs by Industry Section

	SIC 07 Sections	September 2008 (Revised)			June 2009 (Revised)			September 2009 (Provisional)		
		Male	Female	Total	Male	Female	Total	Male	Female	Total
Agriculture, Forestry and Fishing	A	10,790	1,710	12,500	10,630	1,690	12,320	10,650	1,720	12,360
Mining and quarrying	B	1,840	250	2,090	1,640	220	1,860	1,560	210	1,770
Manufacturing	C	64,850	17,630	82,490	58,850	16,400	75,240	57,850	16,240	74,090
Electricity, gas, steam and air conditioning supply	D	1,700	400	2,110	1,740	460	2,190	1,740	450	2,190
Water supply, sewerage, waste management and remediation activities	E	4,320	550	4,880	4,060	470	4,520	4,020	440	4,460
Construction	F	38,120	4,980	43,100	32,900	4,630	37,530	31,630	4,220	35,840
Wholesale and retail trade; repair of motor vehicles and motorcycles	G	60,330	70,300	130,630	58,370	68,120	126,490	57,640	67,130	124,760
Transportation and storage	H	20,580	5,380	25,960	19,830	5,190	25,020	19,700	5,150	24,840
Accommodation and food service activities	I	18,700	24,500	43,190	17,950	23,270	41,220	18,010	23,300	41,310
Information and communication	J	11,000	5,560	16,570	10,420	5,270	15,690	10,260	5,140	15,410
Financial and insurance activities	K	6,680	12,520	19,190	6,670	12,390	19,060	6,480	12,050	18,530
Real estate activities	L	3,010	3,500	6,500	2,910	3,390	6,300	2,850	3,360	6,210
Professional, scientific and technical activities	M	11,060	13,310	24,370	10,650	13,030	23,680	10,690	13,000	23,690
Administrative and support service activities	N	22,780	19,160	41,940	21,040	18,010	39,050	21,090	17,150	38,250
Public administration and defence; compulsory social security	O	30,760	27,520	58,280	31,180	27,330	58,520	31,090	27,820	58,900
Education	P	16,350	51,690	68,040	17,400	56,460	73,860	17,000	54,170	71,170
Human health and social work activities	Q	18,890	95,570	114,460	19,340	96,580	115,930	19,650	97,500	117,140
Arts, entertainment and recreation	R	7,010	6,790	13,790	7,070	7,050	14,110	6,940	6,820	13,760
Other service activities	S	4,680	8,770	13,450	4,690	8,560	13,250	4,650	8,520	13,170
TOTAL	A-S	353,440	370,090	723,530	337,320	368,510	705,830	333,480	364,390	697,870

* Figures are rounded to the nearest 10 and may not sum due to rounding
Full-time/Part-time estimates available on request

2-Digit Breakdown

3

Data are NOT adjusted for seasonality unless otherwise stated

Table 1.3 N.I. Employee Jobs by 2-digit SIC07 Class September 2009

Standard Industrial Classification 2007	Class	Male			Female			All Persons
		Full Time	Part Time	All Males	Full Time	Part Time	All Females	
Crop and animal production, hunting and related service activities	01	2,830	7,440	10,280	530	1,080	1,610	11,890
Forestry and logging	02	250	10	260	40	40	80	330
Fishing and aquaculture	03	90	20	110	20	10	30	140
Mining of coal and lignite	05	0	0	0	0	0	0	0
Extraction of crude petroleum and natural gas	06	0	0	0	0	0	0	0
Mining of metal ores	07	0	0	0	0	0	0	0
Other mining and quarrying	08	1,530	30	1,560	170	40	210	1,770
Mining support service activities	09	0	0	0	0	0	0	0
Manufacture of food products	10	10,880	730	11,610	4,480	1,190	5,670	17,280
Manufacture of beverages and tobacco products	11/12	1,270	20	1,280	480	50	530	1,810
Manufacture of textiles	13	990	30	1,020	310	120	420	1,440
Manufacture of wearing apparel	14	260	30	290	460	100	560	850
Manufacture of leather and related products	15	10	20	30	20	20	40	70
Manufacture of wood and of products of wood and cork, except furniture; manufacture of articles of straw and plaiting materials	16	2,590	90	2,670	300	100	410	3,080
Manufacture of paper and paper products	17	1,350	10	1,360	300	40	330	1,690
Printing and reproduction of recorded media	18	1,050	30	1,080	410	120	530	1,620
Manufacture of coke and refined petroleum products	19	30	0	30	10	0	10	40
Manufacture of chemicals and chemical products	20	1,220	30	1,250	350	50	400	1,660
Manufacture of basic pharmaceutical products and pharmaceutical preparations	21	940	0	950	580	30	610	1,560
Manufacture of rubber and plastic products	22	4,810	60	4,870	850	190	1,040	5,910
Manufacture of other non-metallic mineral products	23	3,920	120	4,040	670	130	800	4,840
Manufacture of basic metals	24	340	10	340	30	10	40	380
Manufacture of fabricated metal products, except machinery and equipment	25	5,640	150	5,780	520	250	770	6,550
Manufacture of computer, electronic and optical products	26	2,720	20	2,740	830	80	910	3,650
Manufacture of electrical equipment	27	2,910	20	2,930	560	70	630	3,560
Manufacture of machinery and equipment n.e.c.	28	3,960	50	4,020	460	130	590	4,610
Manufacture of motor vehicles, trailers and semi-trailers	29	2,530	20	2,550	170	30	200	2,750
Manufacture of other transport equipment	30	5,790	100	5,890	800	70	860	6,750
Manufacture of furniture	31	2,100	120	2,220	330	120	450	2,670
Other manufacturing	32	550	30	580	310	80	390	980
Repair and installation of machinery and equipment	33	300	20	320	30	20	40	360
Electricity, gas, steam and air conditioning supply	35	1,730	10	1,740	420	30	450	2,190
Water collection, treatment and supply	36	600	0	600	0	0	0	610
Sewerage	37	220	0	230	30	10	50	270
Waste collection, treatment and disposal activities; materials recovery	38	3,080	110	3,190	300	90	390	3,580
Remediation activities and other waste management services	39	0	0	0	0	0	0	0
Construction of buildings	41	8,120	450	8,570	920	580	1,500	10,070
Civil engineering	42	6,720	140	6,850	570	190	760	7,620
Specialised construction activities	43	15,620	580	16,200	1,190	760	1,950	18,160
Wholesale and retail trade and repair of motor vehicles and motorcycles	45	9,020	720	9,730	1,370	730	2,100	11,830

Standard Industrial Classification 2007	Class	Male			Female			All Persons
		Full Time	Part Time	All Males	Full Time	Part Time	All Females	
Wholesale trade, except of motor vehicles and motorcycles	46	15,040	1,030	16,080	4,400	1,760	6,160	22,240
Retail trade, except of motor vehicles and motorcycles	47	16,220	15,610	31,830	18,520	40,350	58,870	90,700
Land transport and transport via pipelines	49	10,230	1,370	11,600	1,070	1,040	2,120	13,720
Water transport	50	370	10	380	160	30	190	570
Air transport	51	270	20	290	250	120	370	660
Warehousing and support activities for transportation	52	3,000	370	3,370	940	400	1,340	4,710
Postal and courier activities	53	3,140	920	4,060	550	580	1,130	5,190
Accommodation	55	2,310	1,980	4,280	2,380	2,680	5,060	9,340
Food and beverage service activities	56	6,230	7,500	13,730	5,410	12,840	18,250	31,970
Publishing activities	58	1,060	60	1,120	670	230	900	2,010
Motion picture, video and television programme production, sound recording and music publishing activities	59	250	280	540	160	350	500	1,040
Programming and broadcasting activities	60	560	90	640	370	140	510	1,150
Telecommunications	61	2,250	200	2,450	700	380	1,080	3,530
Computer programming, consultancy and related activities	62	5,350	130	5,480	1,740	390	2,130	7,610
Information service activities	63	30	10	40	10	20	30	70
Financial service activities, except insurance and pension funding	64	4,180	220	4,410	5,470	2,890	8,370	12,770
Insurance, reinsurance and pension funding, except compulsory social security	65	650	40	690	820	310	1,130	1,820
Activities auxiliary to financial services and insurance activities	66	1,290	100	1,380	1,870	690	2,550	3,940
Real estate activities	68	2,630	220	2,850	2,440	920	3,360	6,210
Legal and accounting activities	69	2,320	170	2,480	5,160	1,800	6,960	9,440
Activities of head offices; management consultancy activities	70	1,120	150	1,270	1,060	410	1,480	2,750
Architectural and engineering activities; technical testing and analysis	71	3,630	190	3,810	1,140	450	1,590	5,400
Scientific research and development	72	1,110	30	1,140	660	110	770	1,910
Advertising and market research	73	310	220	520	270	410	680	1,200
Other professional, scientific and technical activities	74	830	60	890	480	220	700	1,590
Veterinary activities	75	510	60	570	530	300	830	1,400
Rental and leasing activities	77	1,260	220	1,480	310	280	590	2,070
Employment activities	78	4,640	2,250	6,900	3,530	2,640	6,160	13,060
Travel agency, tour operator and other reservation service and related activities	79	210	30	230	730	320	1,050	1,280
Security and investigation activities	80	3,160	1,060	4,220	340	340	670	4,900
Services to buildings and landscape activities	81	2,830	2,090	4,910	1,110	4,940	6,050	10,960
Office administrative, office support and other business support activities	82	2,840	520	3,360	1,860	760	2,620	5,980
Public administration and defence; compulsory social security	84	28,360	2,730	31,090	21,080	6,730	27,820	58,900
Education	85	12,650	4,350	17,000	24,580	29,600	54,170	71,170
Human health activities	86	9,570	3,120	12,690	30,880	28,870	59,750	72,440
Residential care activities	87	1,660	610	2,270	4,720	5,790	10,510	12,770
Social work activities without accommodation	88	3,520	1,180	4,690	13,280	13,960	27,240	31,930
Creative, arts and entertainment activities	90	230	120	350	200	250	440	790
Libraries, archives, museums and other cultural activities	91	530	220	750	720	870	1,590	2,340
Gambling and betting activities	92	670	310	980	790	560	1,350	2,330
Sports activities and amusement and recreation activities	93	2,640	2,220	4,870	1,160	2,270	3,430	8,300
Activities of membership organisations	94	2,240	1,410	3,650	1,670	2,700	4,360	8,010
Repair of computers and personal and household goods	95	210	20	230	40	40	90	320
Other personal service activities	96	550	220	770	2,120	1,960	4,070	4,840
Total		268,610	64,860	333,480	185,130	179,260	364,390	697,870

* Figures may not sum due to rounding

† See Notes to Editors, No.4

Table 1.4 N.I. Tourism and Leisure Employee Jobs^ September 2009

	SIC	Male	Female	Total
Accommodation	55	4,280	5,060	9,340
Food and beverage service activities	56*	12,820	16,330	29,150
Travel agency, tour operator and other reservation service and related activities	79	230	1,050	1,280
Libraries, archives, museums and other cultural activities	91	750	1,590	2,340
Gambling and betting activities	92	980	1,350	2,330
Sports activities and amusement and recreation activities	93	4,870	3,430	8,300
Total		23,930	28,810	52,740

^ Figures are rounded to the nearest 10 and may not sum due to rounding

* Excluding event catering and other food service activities

Public Sector Data

4

Data are NOT adjusted for seasonality unless otherwise stated

Table 1.5 N.I. Public Sector Employee Jobs September 2009

	Male	Female	Total
NI CENTRAL GOVERNMENT	39,110	76,885	115,995
Office of the First and Deputy First Minister	182	229	411
Department of Agriculture and Rural Development (DARD)	2,431	1,513	3,944
Department for Culture, Arts and Leisure (DCAL)	141	141	282
Department of Enterprise, Trade and Investment (DETI)	332	351	683
Department of Education (DE)	258	401	659
Department of Environment (DOE)	1,533	1,442	2,975
Department of Finance and Personnel (DFP)	1,990	1,756	3,746
Department for Employment and Learning (DEL)	670	1,359	2,029
Department of Regional Development (DRD)	1,998	610	2,608
Department for Social Development (DSD)	3,284	4,689	7,973
Department of Health, Social Services and Public Safety (DHSSPS)	419	436	855
Total of 11 Government Departments (Northern Ireland Civil Service)	13,238	12,927	26,165
Fire Service	2,020	236	2,256
NI Audit Office	76	69	145
Northern Ireland Assembly	273	185	458
Northern Ireland Office	807	1,381	2,188
Parliamentary Commissioner for Administration & Complaints	8	16	24
Prison Service	1,537	444	1,981
Police Service of Northern Ireland	7,264	3,710	10,974
NHS Trusts	13,383	57,513	70,896
British Broadcasting Corporation (BBC)	468	373	841
Assets Recovery Agency	36	31	67
BODIES UNDER AEGIS OF NI CENTRAL GOVERNMENT	18,958	56,952	77,695
Office of the First and Deputy First Minister	103	170	273
Department of Agriculture and Rural Development (DARD)	30	40	70
Department for Culture, Arts and Leisure (DCAL)	354	403	757
Department of Enterprise, Trade and Investment (DETI)	362	541	903
Department of Education (DE)	192	329	521
Department of Finance and Personnel (DFP)	18	34	52
Department for Employment and Learning (DEL)	417	396	813
Department of Regional Development (DRD)	1,165	245	1,410
Department of Health & Social Services and Public Safety (DHSSPS)	867	1,501	2,368
Department for Social Development (DSD)	1,663	1,659	3,322
Northern Ireland Office	354	537	891
Education & Library Boards (Non-Teaching)	8,269	33,439	41,708
Teaching Staff in All Schools	6,208	18,399	24,607
UK CENTRAL GOVERNMENT	2,647	2,932	5,579
LOCAL GOVERNMENT (District Councils)	6,991	4,733	11,724
PUBLIC CORPORATIONS	8,389	2,954	11,343
NI Based	4,814	2,291	7,105
UK Based	3,575	663	4,238
Total	76,095	144,456	222,336

Unadjusted and Seasonally Adjusted Series

5

Data are NOT adjusted for seasonality unless otherwise stated

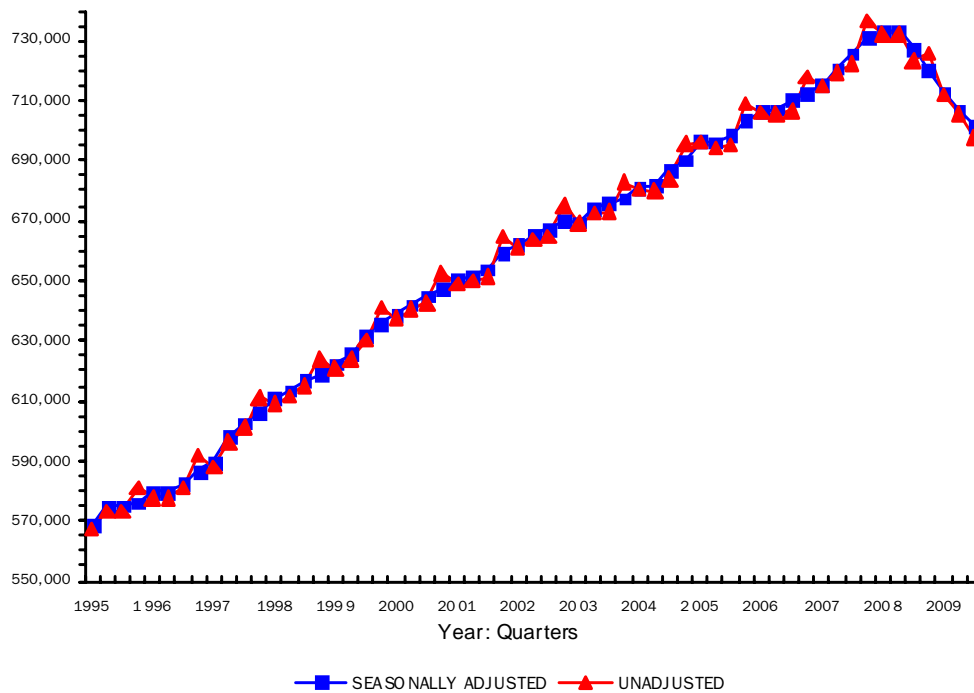
Table 1.6 N.I. Employee Jobs by Broad Industry Sector

Unadjusted & Seasonally Adjusted 1994 – 2009

		Unadjusted					Seasonally Adjusted				
		Manuf.	Const.	Serv.	Other	All	Manuf.	Const.	Serv.	Other	All
1994	Mar	97,520	24,270	405,450	26,890	554,130	97,940	24,330	406,560	26,890	555,720
	Jun	98,420	24,140	408,100	26,280	556,940	98,750	24,130	409,180	26,280	558,340
	Sep	99,810	24,480	409,320	26,280	559,890	99,460	24,270	411,730	26,280	561,730
	Dec	100,320	24,350	420,720	26,130	571,530	99,910	24,490	416,140	26,130	566,680
1995	Mar	99,550	24,360	417,120	26,090	567,110	100,000	24,450	418,150	26,090	568,680
	Jun	101,220	24,230	421,640	26,340	573,420	101,530	24,210	422,840	26,340	574,930
	Sep	101,600	24,120	421,170	26,460	573,340	101,240	23,910	423,520	26,460	575,130
	Dec	101,960	23,770	429,270	25,990	580,990	101,540	23,880	424,690	25,990	576,090
1996	Mar	101,850	23,580	426,610	25,850	577,880	102,400	23,770	427,540	25,850	579,560
	Jun	101,490	23,180	427,730	25,250	577,640	101,780	23,270	429,380	25,250	579,680
	Sep	102,470	23,390	429,870	25,290	581,020	102,080	23,140	431,920	25,290	582,430
	Dec	103,630	23,570	439,380	25,240	591,810	103,180	23,530	434,750	25,240	586,690
1997	Mar	103,380	23,380	436,190	25,110	588,050	103,930	23,560	437,120	25,110	589,720
	Jun	104,730	27,850	438,500	25,020	596,100	105,020	27,950	440,120	25,020	598,120
	Sep	105,330	28,510	442,170	25,090	601,090	104,950	28,260	444,250	25,090	602,560
	Dec	105,050	29,090	452,830	24,350	611,330	104,610	29,040	448,210	24,350	606,210
1998	Mar	104,050	29,500	451,270	24,280	609,110	104,580	29,670	452,190	24,280	610,720
	Jun	104,120	29,940	453,530	23,950	611,530	104,390	30,060	455,100	23,950	613,490
	Sep	105,270	30,390	455,720	23,880	615,270	104,930	30,180	457,900	23,880	616,890
	Dec	104,660	30,730	464,860	23,740	623,990	104,220	30,660	460,210	23,740	618,820
1999	Mar	102,680	30,960	463,510	23,710	620,870	103,160	31,110	464,420	23,710	622,410
	Jun	102,540	31,700	466,440	23,320	624,000	102,800	31,840	467,920	23,320	625,880
	Sep	103,080	33,510	470,270	23,270	630,120	102,800	33,320	472,620	23,270	632,010
	Dec	103,070	34,360	480,250	23,390	641,070	102,640	34,260	475,510	23,390	635,800
2000	Mar	101,880	34,540	477,710	23,350	637,480	102,320	34,660	478,630	23,350	638,960
	Jun	100,910	34,940	480,910	23,620	640,390	101,140	35,080	482,270	23,620	642,100
	Sep	101,140	35,690	482,340	23,580	642,750	100,900	35,560	484,920	23,580	644,960
	Dec	101,210	35,950	491,970	23,370	652,500	100,830	35,830	487,120	23,370	647,150
2001	Mar	99,990	36,250	489,520	23,140	648,900	100,350	36,350	490,410	23,140	650,260
	Jun	98,900	36,250	492,610	22,270	650,030	99,130	36,370	493,890	22,270	651,650
	Sep	97,360	36,530	495,230	22,310	651,420	97,150	36,450	498,020	22,310	653,920
	Dec	96,250	37,150	508,880	22,390	664,660	95,920	37,030	503,990	22,390	659,330
2002	Mar	94,860	36,990	506,920	22,270	661,040	95,150	37,070	507,640	22,270	662,140
	Jun	94,510	36,740	510,490	21,890	663,630	94,740	36,830	511,770	21,890	665,220
	Sep	93,620	36,720	512,350	21,920	664,600	93,400	36,680	515,400	21,920	667,390
	Dec	92,590	36,310	524,490	21,870	675,260	92,350	36,200	519,530	21,870	669,950
2003	Mar	90,560	35,860	520,610	21,900	668,930	90,780	35,940	521,070	21,900	669,680
	Jun	88,990	36,360	524,810	22,440	672,610	89,240	36,410	526,200	22,440	674,300
	Sep	88,970	36,440	525,110	22,380	672,910	88,710	36,430	528,360	22,380	675,880
	Dec	87,940	36,750	535,520	22,640	682,850	87,770	36,630	530,530	22,640	677,570

		Unadjusted					Seasonally Adjusted				
		Manuf.	Const.	Serv.	Other	All	Manuf.	Const.	Serv.	Other	All
2004	Mar	87,110	37,100	533,700	22,610	680,530	87,300	37,190	533,910	22,610	681,010
	Jun	86,080	37,180	534,340	22,290	679,900	86,330	37,200	535,800	22,290	681,630
	Sep	86,230	37,270	537,950	22,480	683,930	85,910	37,290	541,410	22,480	687,090
	Dec	85,580	37,550	549,750	22,770	695,660	85,490	37,410	544,700	22,770	690,370
2005	Mar	84,970	37,770	550,930	22,430	696,090	85,140	37,870	550,950	22,430	696,390
	Jun	84,080	38,750	550,400	21,130	694,350	84,310	38,770	551,900	21,130	696,110
	Sep	84,520	39,310	550,270	21,310	695,420	84,160	39,340	553,880	21,310	698,700
	Dec	83,830	41,150	562,530	21,390	708,890	83,790	40,970	557,460	21,390	703,600
2006	Mar	83,730	41,790	559,080	21,390	705,990	83,910	41,930	559,040	21,390	706,270
	Jun	83,550	42,300	558,750	20,830	705,440	83,750	42,330	560,130	20,830	707,040
	Sep	84,210	42,690	559,000	20,910	706,820	83,830	42,730	562,840	20,910	710,310
	Dec	84,040	43,140	569,820	20,990	717,990	84,050	42,910	564,660	20,990	712,610
2007	Mar	83,490	43,460	566,810	21,050	714,820	83,690	43,640	566,810	21,050	715,190
	Jun	84,070	44,710	569,910	20,890	719,590	84,210	44,750	571,120	20,890	720,980
	Sep	84,280	45,320	571,390	21,070	722,060	83,920	45,350	575,370	21,070	725,710
	Dec (R)	83,560	46,240	585,350	21,390	736,540	83,590	45,960	580,150	21,390	731,080
2008	Mar (R)	83,320	45,350	582,410	21,310	732,380	83,540	45,580	582,540	21,310	732,960
	Jun (R)	83,350	44,400	583,090	21,500	732,330	83,440	44,440	584,040	21,500	733,410
	Sep (R)	82,490	43,100	576,380	21,560	723,530	82,140	43,120	580,510	21,560	727,330
	Dec (R)	80,150	41,410	582,910	21,210	725,680	80,190	41,090	577,690	21,210	720,170
2009	Mar (R)	77,640	38,920	574,470	21,000	712,040	77,870	39,190	574,690	21,000	712,760
	Jun (R)	75,240	37,530	572,170	20,890	705,830	75,310	37,570	572,970	20,890	706,730
	Sep (P)	74,090	35,840	567,150	20,780	697,870	73,760	35,850	571,330	20,780	701,730

Fig 1.4 N.I. Employee Jobs 1995-2009
Unadjusted & Seasonally Adjusted



Special Feature

6

Data are NOT adjusted for seasonality unless otherwise stated

Broad Industry Sector Comparison of NI and GB Employee Jobs

Table 1.7 provides a summary of the change in employee jobs in Great Britain and Northern Ireland between September 1999 and June 2009 (the latest available GB data for comparison). It shows that over the last 10 years there has been an increase of 10.6% in the overall number of employee jobs in NI, compared to an increase of 4.3% in GB. It also shows that NI has outperformed GB in both the manufacturing sector and in the services sector.

Table 1.7 Employee jobs in Great Britain and Northern Ireland 1999 - 2009

	GB				NI			
	Sep-99	Jun-09	Difference	% Diff	Sep-99	Jun-09	Difference	% Diff
Manufacturing	3,933,120	2,563,460	-1,369,660	-34.8	103,080	75,240	-27,840	-27.0
Construction	1,117,300	1,240,750	123,450	11.0	33,510	37,530	4,020	12.0
Services	19,175,610	21,562,290	2,386,680	12.4	470,270	572,170	101,900	21.7
Other [†]	491,830	416,550	-75,280	-15.3	23,270	20,890	-2,380	-10.2
All Sectors	24,717,860	25,783,050	1,065,190	4.3	630,120	705,830	75,700	12.0

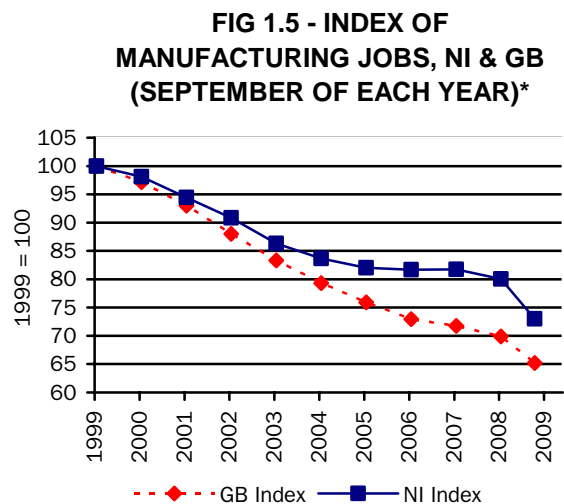
Further analysis of each broad industry sector for the period September 1999 to June 2009 is detailed below.

Employee Jobs in Manufacturing

Fig 1.5 shows NI and GB manufacturing jobs indexed to 1999. It illustrates how the level of jobs in the manufacturing sector in both NI and GB has followed a similar trend over the past ten years.

NI manufacturing jobs recorded a marked decline between 1999 and 2005, with the figure for 2005 falling to 82% of the 1999 figure. Manufacturing employee jobs in NI have been fairly stable between 2005 and 2008, with the 2008 figure at 80% of the 1999 level. This trend ended in 2009 with a decline in manufacturing over the period of 8.8%, leaving the 2009 figure at 73% of the 1999 figure.

Manufacturing jobs in GB have been in sharp decline from 1999 and the 2009 estimate stands at only 65% of the 1999 level. The rate of decline in manufacturing employee jobs slowed between 2006 and 2008, before declining by 6.7% in 2009.

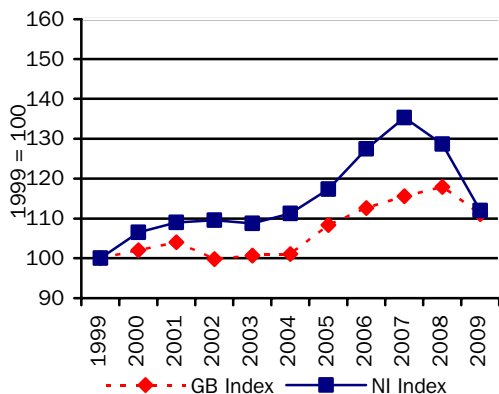


*2009 figure as at June (latest available data for comparison)

Employee Jobs in Construction

Construction jobs, indexed to 1999 for NI and GB are shown in Fig 1.6. During the early to mid 1990's NI and GB construction jobs followed a similar downward trend. However, in 1997 the Inland Revenue introduced a change in tax legislation, which reclassified self-employed persons to employee status. This caused a rapid growth in the number of construction employee jobs in both GB and NI.

Fig 1.6 Index of Construction jobs, NI & GB (September of each year)*



*2009 figure as at June (latest available data for comparison)

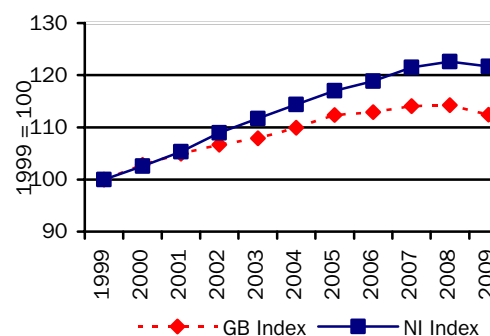
The NI figure continued to grow to a high in 2007 of 35% higher than the 1999 figure. In 2009 construction stands 12% higher than the 1999 figure. The corresponding increase in GB now stands at 11%, having fallen from a high of 17% in 2008.

Employee Jobs in the Services Sector

Fig 1.7 shows the NI and GB service sector jobs indexed to 1999. The service sector accounts for the majority of jobs in both NI and GB. At September 1999, service sector jobs represented 74% of all NI employee jobs and 78% of all GB employee jobs.

Both NI and GB have shown a gradual increase in service sector jobs between 1999 and 2008, before declining in 2009. However the number of service sector jobs in NI has increased at a faster pace than in GB. At 2009, the figure for NI was 22% higher than the 1999 figure, declining from 23% higher in 2008. In GB it was 12% higher in 2009, declining from 14% higher in 2008.

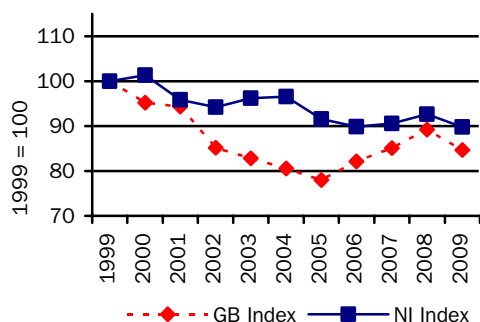
Fig 1.7 Index of Service Sector Jobs, NI & GB (September of each year)*



*2009 figure as at June (latest available data for comparison)

Employee Jobs in Other Industries

Fig 1.8 Index of Other Industries Jobs, NI & GB (September of each year)*



*2009 figure as at June (latest available data for comparison)

Fig 1.8 illustrates the change in NI and GB employee jobs in Other Industries, indexed to 1999. Other Industries include Agriculture & Fishing, Mining & Quarrying and Electricity, Gas & Water Supply.

During the period 1999 to 2009, both NI and GB experienced a fall in the number of employee jobs in Other Industries. Between 2001 and 2005, the rate of fall was larger in GB than in NI. The 2009 figure for GB stands at 85% of its 1999 level while the NI now stands at 90% of its 1999 level.

Notes To Editors

7

Note 1

Estimates of the number of employee jobs are obtained from the Quarterly Employment Survey (QES). The QES covers all public sector bodies, all private sector firms with 25 or more employees and a sample of the remainder. The sample size is such that estimates of total employee jobs should be accurate to within +/- 1% of the Census of Employment total. The survey collects information on numbers of persons in full-time and part-time employment. It should be noted that the survey counts the number of jobs rather than the number of persons with jobs. For example, a person holding both a full-time job and a part-time job, or someone with two part-time jobs, will be counted twice.

The QES is a voluntary survey of employers in Northern Ireland and results from it are collated into industry classes using the 2007 Standard Industrial Classification (SIC07). As a result, there is no breach of confidentiality.

Note 2

It is normal practice for Quarterly Employment Survey estimates to be revised. All quarters back to the latest published Census of Employment (currently Q4 2007 onwards) are provisional and subject to revision in light of (a) late responses to surveys and administrative sources, (b) where cross survey congruence checks provide more accurate data and (c) there are revisions to seasonal adjustment factors which are re-estimated every quarter. A common pitfall in interpreting series is that expectations of accuracy and reliability in early estimates are often too high. Revisions are an inevitable consequence of the trade off between timelines and accuracy. Early estimates are based on incomplete data.

Very few statistical revisions arise as a result of 'errors' in the popular sense of the word. All estimates, by definition, are subject to statistical 'error' but in this context the word refers to the uncertainty inherent in any process or calculation that uses sampling, estimation or modelling. Most revisions reflect either the adoption of new statistical techniques, or the incorporation of new information, which allows the statistical error of previous statements to be reduced. Only rarely are there avoidable 'errors' such as human or system failures, and such mistakes are made quite clear when they do occur.

A QES Revisions policy and tables including summary information on the size and direction of revisions for the Quarterly Employment Survey are available under the following link:

http://www.detini.gov.uk/deti-stats-index/stats-surveys/stats-qes/revisions_to_qes_estimates.htm

Note 3

The quarterly survey covers all Industrial Sections apart from Agriculture. Overall employment (i.e. employees and the self-employed) estimates for the agricultural sector are provided, on an annual basis, from the Department of Agriculture and Rural Development's (DARD) Farm Census. Self-employed agriculture workers are defined as including full-time farmers and partners on all agricultural businesses. Agriculture employees include all workers on agricultural businesses other than (a) part-time farmers and partners and (b) farmers' spouses. They include full-time, part-time and casual workers, both paid and unpaid.

Note 4

Public sector jobs comprise Central Government (including Bodies under the aegis of Central Government), Local Government and Public Corporations. An announcement in April 1993 transferred National Health Service Trusts from 'Bodies under the aegis of Central Government' to 'Public Corporations'. A subsequent announcement by the Public Sector Classification Committee (PSCC) in July 2003 stated that all NHS Trusts should retrospectively be reclassified to Central Government. In addition, following advice from PSCC, Northern Ireland Housing Executive employees were reclassified from SIC (07) 84 to SIC (07) 68 in December 2006. This change applies to each quarter from Quarter 1 2004 onwards. From 1st April 2007, The Water Service became a Government owned company known as "Northern Ireland Water". As a result its employees have been transferred from "NI Central Government" to "Bodies under the Aegis of NI Central Government".

Note 5

A seasonally adjusted employment series provides a better indication of underlying trends in employment. This series is available on a consistent basis from June 1978 onwards and figures by main industrial sector from 1994 onwards are shown in Table 1.6.

Note 6

Information on employee jobs at a sub Northern Ireland level (e.g. District Council Area (DCA), Parliamentary Constituency Area (PCA), Ward Level) and at the 5-digit SIC03 level are available from the Northern Ireland Census of Employment. Details of the Census of Employment results are available from Statistics Research Branch Tel: (028) 9052 9379 or on our Internet website <http://www.detini.gov.uk/deti-stats-index.htm>