



Northern Ireland

Quarterly Employment Survey (QES) Supplement

September 2008 Published 17/12/2008

- The QES is a business survey that has been carried out in Northern Ireland since 1978. The QES has a sample size of approximately 5,200 and covers all employers with at least 25 employees, all public sector employers and a representative sample of smaller firms.
- The September 2008 seasonally adjusted employee jobs figure stands at 718,370.
- This represents a seasonally adjusted decrease of 1.0% (or -6,990 jobs) from the revised June 2008 estimate of 725,370.
- Over the quarter seasonally adjusted employee jobs decreased in the Service Sector by 0.7% (-4,280 jobs) and in the Construction Sector by 3.7% (-1,600 jobs), while employee jobs in the Manufacturing sector decreased by -1.3% (-1,120 jobs).
- The September 2008 seasonally unadjusted figure stands at 714,680.
- This represents a decrease of 1.4% (-9,810 jobs) since June 2008 and a decrease of 0.6% (-4,560 jobs) in the past year.
- Over the year, September 2007 to September 2008, the unadjusted employee jobs figure for Construction decreased by 7.3% (-3,270 jobs), while Manufacturing employee jobs decreased by 1.2% (-1,020 jobs) and employee jobs in the Service Sector decreased by 0.1% (-450 jobs)
- The net quarterly decrease in employee jobs (-9,810) is comprised of decreases in both the number of full-time employee jobs (-6,590) and part-time employee jobs (-3,220).



A NATIONAL STATISTICS PUBLICATION

National Statistics are produced to high professional standards set out in the National Statistics Code of Practice. They undergo regular quality assurance reviews to ensure that they meet customer needs. They are produced free from any political interference.

For general enquiries about National Statistics, contact
The National Statistics Public Enquiry Service on **0845 601 3034**
minicom: 01633 812399
E-mail: info@statistics.gov.uk
Fax: 01633 652747
Letters: Room 1015, Government Buildings, Cardiff Road, Newport,
Gwent, South Wales NP10 8XG

You can also find National Statistics on the Internet – go to
www.statistics.gov.uk

Department of Enterprise,
Trade and Investment

**Northern Ireland
Quarterly Employment Survey (QES)
Supplement**

September 2008

Crown Copyright

Contents

1

Executive Summary
Page 1

2

NI Employee Jobs
Page 2-4

3

2-Digit Breakdown
Pages 5-6

4

Public Sector Data
Page 7

5

Unadjusted & Seasonally Adjusted Series
Page 8-9

6

Special Features
Page 10

7

Notes to Editors
Page 11

Executive Summary

1

Introduction

This bulletin presents data from the Northern Ireland Quarterly Employment Survey (QES), which is conducted by Statistics Research Branch of the Department of Enterprise, Trade and Investment (DETI).

The QES provides short-term employee jobs estimates for Northern Ireland, which are then used by the Office for National Statistics (ONS) to feed into the calculation of the quarterly workforce jobs estimates for the United Kingdom as a whole.

The QES covers all public sector bodies, all private sector firms with 25 or more employees and a sample of the remainder. The sample size is such that estimates of total employee jobs should be accurate to within +/- 1% of the Census of Employment total. The survey collects information on the number of males/females in full-time and part-time employment by business activity. The results are then collated into industry classes using the 2003 Standard Industrial Classification (SIC03).

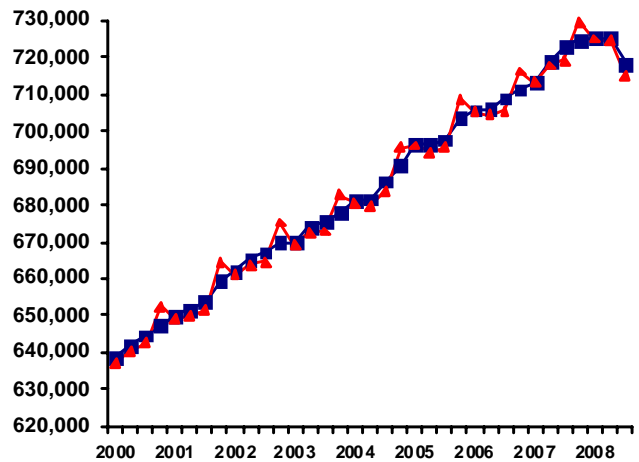
It should be noted that the survey counts the number of jobs rather than the number of persons with jobs. For example, a person holding both a full-time job and part-time job, or someone with two part-time jobs, will be counted twice.

Seasonally Adjusted

The September 2008 seasonally adjusted employee jobs figure stands at 718,370.

This represents a seasonally adjusted decrease of 1.0% (or -6,990 jobs) from the revised June 2008 estimate of 725,370.

Over the quarter seasonally adjusted employee jobs decreased in the Service Sector by 0.7% (-4,280 jobs) and in the Construction Sector by 3.7% (-1,600 jobs), while employee jobs in the Manufacturing sector decreased by -1.3% (-1,120 jobs).



■ Seasonally Adjusted ▲ Unadjusted

Unadjusted

The September 2008 seasonally unadjusted figure stands at 714,680.

This represents a decrease of 1.4% (-9,810 jobs) since June 2008 and a decrease of 0.6% (-4,560 jobs) in the past year.

Over the year, September 2007 to September 2008, the unadjusted employee jobs figure for Construction decreased by 7.3% (-3,270 jobs), while Manufacturing employee jobs decreased by 1.2% (-1,020 jobs) and employee jobs in the Service Sector decreased by 0.1% (-450 jobs).

Date of Next Publication

Quarterly Employment Survey results for Quarter 4 2008 will be published on Wednesday 18th March 2009.

NI Employee Jobs

2

Data are NOT adjusted for seasonality unless otherwise stated

Employee Jobs from the Quarterly Employment Survey

Table 1.1 below provides a summary of the latest results from the Quarterly Employment Survey. It shows that in September 2008 there were an estimated 714,680 employee jobs in Northern Ireland.

Table 1.1 NI Employee Jobs, Full-time/Part-time Split, September 2008

	Male		Female		Total	% change in total	
	Full Time	Part Time	Full Time	Part Time		Since last quarter	Since last year
Manufacturing	66,070	2,010	15,850	3,500	87,420	-1.2%	-1.2%
Construction	35,550	1,460	2,950	1,560	41,520	-3.9%	-7.3%
Services	175,880	51,890	167,580	173,280	568,630	-1.2%	-0.1%
Other ¹	7,230	7,600	1,130	1,140	17,100	0.0%	1.1%
Total	284,720	62,960	187,500	179,490	714,680	-1.4%	-0.6%

¹ Covers Industry Sections A, B, C and E

* Figures are rounded to the nearest 10 and may not sum due to rounding

Fig 1.1 shows the Male/Female, Full-time/Part-time breakdown of employee jobs in Northern Ireland, as at September 2008. Female employee jobs account for just over half of all employee jobs in NI (366,990 female employee jobs, compared to 347,680 males). There is, however, a significant difference in the working patterns of male and female employees. Almost half (48.9%) of female employee jobs are part-time, whereas only 18.1% of male employees work on a part-time basis.

Fig 1.1 Composition of Employee Jobs, September 2008

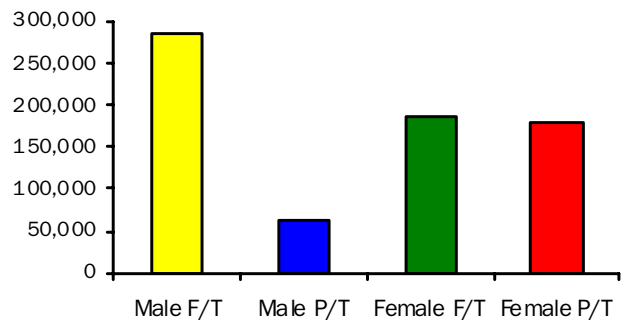


Fig 1.2 shows the annual and quarterly changes in employee jobs. Between June 2008 and September 2008 the number of employee jobs in NI fell by 1.4% (-9,810 jobs). This consisted of decreases in the Service Sector (-7,080), in Construction (-1,690) and in Manufacturing (-1,040).

Between September 2007 and September 2008 the number of employee jobs decreased by 4,560. This consisted of decreases in Construction (-3,270), Manufacturing (-1,020) and the Service Sector (-450), and an increase in Other Industries (+180).

FIG 1.3 Employee Jobs, Male/Female, Full-Time/Part-Time Split, September 2008

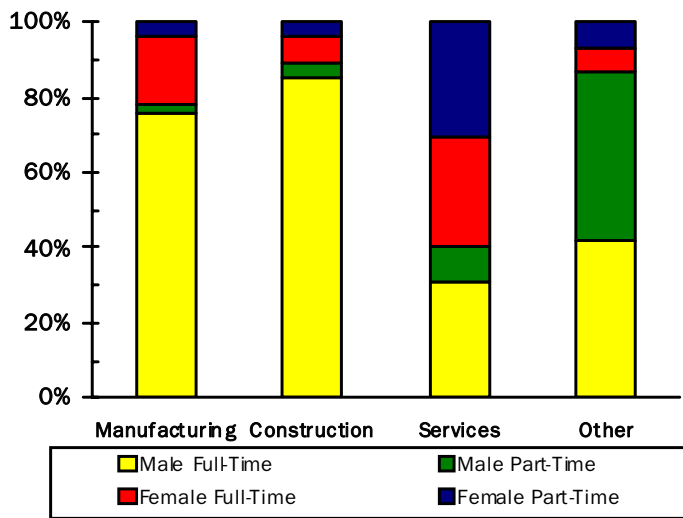


Fig 1.2 Annual and Quarterly Changes in Employee Jobs

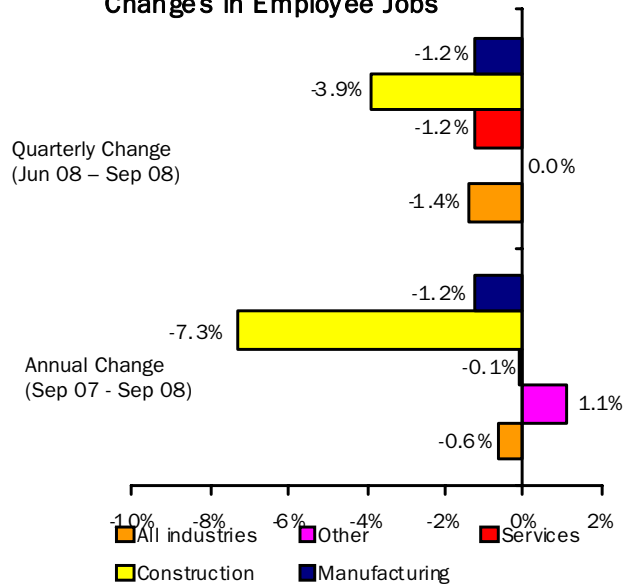


Fig 1.3 shows the male/female, full-time/part-time split for each broad industry sector within Northern Ireland. It highlights the large proportion of employee jobs in the Manufacturing and Construction Sectors that are occupied by male full-time employees (75.6% for Manufacturing, 85.6% for Construction). In contrast, females occupy 59.9% of the 568,630 employee jobs within the Service Sector. These female jobs within Services are in turn divided fairly evenly between full-time (49.2%) and part-time (50.8%) workers.

Table 1.2 on page 4 shows Employee Jobs by Industry Section for September 2008. Comparative figures for the previous quarter (June 2008) and for the previous year (September 2007) are also included.

Table 1.2 N.I. Employee Jobs by Industry Section

	SIC 03 Sections	September 2007 (Revised)			June 2008 (Revised)			September 2008 (Provisional)		
		Male	Female	Total	Male	Female	Total	Male	Female	Total
Agriculture, Hunting & Forestry & Fishing	A/B	10,500	1,440	11,950	10,510	1,610	12,130	10,510	1,610	12,120
Mining & Quarrying	C	1,940	260	2,200	1,900	260	2,160	1,880	260	2,140
Manufacturing	D	68,770	19,680	88,450	69,000	19,460	88,460	68,070	19,350	87,420
Electricity, Gas & Water supply	E	2,390	380	2,770	2,410	400	2,810	2,440	400	2,840
Construction	F	40,020	4,770	44,790	38,510	4,700	43,210	37,010	4,510	41,520
Wholesale and Retail Trade; Repairs	G	57,590	66,450	124,030	58,900	68,760	127,670	58,520	68,380	126,900
Hotels & Restaurants	H	18,460	24,460	42,930	18,220	24,250	42,480	18,330	24,250	42,570
Transport, Storage & Communication	I	23,230	8,020	31,250	23,070	7,800	30,870	23,050	7,780	30,830
Financial Intermediation	J	6,290	12,230	18,520	6,390	12,180	18,570	6,240	11,970	18,210
Real Estate, Renting & Business Activities	K	40,910	36,210	77,120	40,930	36,120	77,050	39,860	35,550	75,410
Public Administration and Defence	L	31,080	27,410	58,490	30,810	27,420	58,230	30,730	27,440	58,180
Education	M	16,490	51,870	68,350	17,010	55,000	72,000	16,210	51,690	67,900
Health & Social work	N	19,550	96,570	116,120	19,600	96,580	116,190	19,540	96,530	116,070
Other Service Activities	O	15,140	17,130	32,270	15,280	17,380	32,660	15,300	17,260	32,570
Services	G-O	228,720	340,370	569,090	230,210	345,510	575,710	227,770	340,860	568,630
Total	A-O	352,340	366,900	719,240	352,540	371,940	724,480	347,680	366,990	714,680

* Figures are rounded to the nearest 10 and may not sum due to rounding
Full-time/Part-time estimates available on request

2-Digit Breakdown

3

Data are NOT adjusted for seasonality unless otherwise stated

Table 1.3 N.I. Employee Jobs by 2-digit SIC03 Class September 2008

Standard Industrial Classification 2003	Class	Male			Female			All Persons
		Full Time	Part Time	All Males	Full Time	Part Time	All Females	
Agriculture, Hunting & Related Activities	1	2,590	7,540	10,130	500	1,010	1,510	11,640
Forestry, logging and related activities	2	270	10	270	40	30	70	340
Fishing, operation of fish hatcheries	5	90	10	110	20	10	30	140
Mining of coal and lignite: extraction of peat	10	210	10	210	50	0	50	260
Extraction of crude petroleum and natural gas: service activities incidental to oil & gas extraction excl surveying	11	0	0	0	0	0	0	0
Mining of uranium and thorium ores	12	0	0	0	0	0	0	0
Mining of metal ores	13	0	0	0	0	0	0	0
Other mining and quarrying	14	1,640	30	1,670	160	50	210	1,880
Manufacture of food products; beverages and tobacco	15/16	11,880	710	12,590	4,890	1,200	6,090	18,680
Manufacture of textiles	17	1,110	20	1,140	430	120	550	1,690
Manufacture of wearing apparel	18	300	30	330	590	140	730	1,060
Manufacture of leather and leather products	19	40	0	40	30	10	40	80
Manufacture of wood and wood products	20	3,390	130	3,530	390	170	560	4,090
Manufacture of pulp, paper and paper products	21	1,250	10	1,260	280	40	320	1,570
Publishing, printing and production of recorded media	22	2,310	110	2,430	1,240	370	1,610	4,040
Manufacture of coke, refined petroleum products and nuclear fuels	23	30	0	30	10	0	10	30
Manufacture of chemicals and chemical products	24	2,210	40	2,250	1,020	100	1,120	3,360
Manufacture of rubber and plastic products	25	5,190	310	5,510	1,030	210	1,230	6,740
Manufacture of other non-metallic mineral products	26	4,920	110	5,030	790	140	930	5,960
Manufacture of basic metals	27	450	10	460	30	20	50	510
Manufacture of fabricated metal products except machinery	28	6,510	160	6,670	600	260	860	7,530
Manufacture of machinery and equipment not elsewhere classified	29	6,340	110	6,450	750	200	950	7,400
Manufacture of office machinery and equipment	30	1,910	10	1,920	370	40	400	2,330
Manufacture of electrical machinery and apparatus not elsewhere classified	31	3,180	20	3,210	590	60	650	3,850
Manufacture of radio, television and communication equipment	32	890	10	890	520	50	580	1,470
Manufacture of medical, precision and optical instruments, watches and clocks	33	1,200	20	1,220	490	60	550	1,770
Manufacture of motor vehicles, trailers and semi-trailers	34	2,870	10	2,880	180	30	200	3,090
Manufacture of other transport equipment	35	5,610	10	5,620	620	50	680	6,300
Manufacture of furniture; manufacture not elsewhere classified	36	3,330	120	3,460	730	190	910	4,370
Recycling	37	1,130	40	1,170	280	50	340	1,510
Electricity, gas, steam and hot water supply	40	1,670	0	1,670	360	30	400	2,070
Collection, purification and distribution of water	41	770	0	770	0	0	0	770
Construction	45	35,550	1,460	37,010	2,950	1,560	4,510	41,520
Sale, maintenance and repair of motor vehicles; retail of automotive fuel	50	9,920	1,770	11,690	2,480	2,850	5,330	17,020
Wholesale trade and commission trade	51	15,250	930	16,180	4,450	1,700	6,140	22,320
Retail trade	52	16,090	14,560	30,640	17,820	39,080	56,910	87,550
Hotels and restaurants	55	8,620	9,710	18,330	8,200	16,050	24,250	42,570
Land transport, transport via pipelines	60	10,440	1,280	11,720	1,160	940	2,110	13,820
Water transport	61	400	10	410	170	30	200	610
Air transport	62	260	20	290	300	120	420	710

Standard Industrial Classification 2003	Class	Male			Female			All Persons
		Full Time	Part Time	All Males	Full Time	Part Time	All Females	
Supporting and auxiliary transport activities; travel agents	63	3,310	470	3,780	1,730	770	2,490	6,270
Post and telecommunications	64	5,730	1,130	6,860	1,470	1,100	2,570	9,420
Financial intermediation except insurance and pension funding	65	3,920	180	4,100	5,400	2,680	8,090	12,180
Insurance and pension funding, except compulsory social security	66	790	40	830	1,030	340	1,370	2,200
Activities auxiliary to financial intermediation	67	1,220	90	1,310	1,830	690	2,520	3,830
Real estate activities ¹	70	3,660	360	4,020	2,730	1,070	3,800	7,810
Renting of equipment and machinery without operator	71	1,280	200	1,480	330	270	600	2,080
Computer and related activities	72	5,200	170	5,360	1,730	500	2,230	7,590
Research and development	73	1,030	30	1,060	570	130	690	1,750
Other business activities	74	22,440	5,510	27,950	15,960	12,270	28,230	56,170
Public administration and defence; compulsory social security ¹	75	28,290	2,440	30,730	20,960	6,480	27,440	58,180
Education	80	12,370	3,840	16,210	23,730	27,960	51,690	67,900
Health and social work	85	15,100	4,440	19,540	47,490	49,040	96,530	116,070
Sewage and refuse disposal, sanitation and similar activities	90	2,580	90	2,670	360	190	550	3,220
Activities of membership organisations not elsewhere classified	91	2,230	1,330	3,560	1,740	2,730	4,470	8,030
Recreational, cultural and sporting activities	92	5,160	3,120	8,270	3,570	4,350	7,920	16,190
Other service activities	93	590	200	800	2,370	1,950	4,320	5,120
Total		284,720	62,960	347,680	187,500	179,490	366,990	714,680

* Figures may not sum due to rounding

¹ See Notes to Editors, No.4

Table 1.4 N.I. Tourism and Leisure Employee Jobs* September 2008

	SIC	Male	Female	Total
Hotels	551	4,360	5,040	9,400
Camping Sites and Other Provision of Short-Stay Accommodation	552	260	390	650
Restaurants	553	7,000	11,420	18,430
Bars	554	5,490	4,530	10,010
Activities of Travel Agencies and Tour Operators; Tourist Assistance Activities not Elsewhere Classified	633	250	1,050	1,290
Libraries, Archives, Museums and Other Cultural Activities	925	800	1,550	2,360
Sporting Activities	926	4,230	3,260	7,490
Other Recreational Activities	927	1,490	1,520	3,010
Total		23,880	28,760	52,640

* Figures are rounded to the nearest 10 and may not sum due to rounding

Public Sector Data

4

Data are NOT adjusted for seasonality unless otherwise stated

Table 1.5 N.I. Public Sector Employee Jobs September 2008

	Male	Female	Total
NI CENTRAL GOVERNMENT	39,047	77,122	116,169
Office of the First and Deputy First Minister	187	228	415
Department of Agriculture and Rural Development (DARD)	2,500	1,512	4,012
Department for Culture, Arts and Leisure (DCAL)	128	136	264
Department of Enterprise, Trade and Investment (DETI)	315	348	663
Department of Education (DE)	272	406	678
Department of Environment (DOE)	1,529	1,456	2,985
Department of Finance and Personnel (DFP)	1,924	1,716	3,640
Department for Employment and Learning (DEL)	616	1,281	1,897
Department of Regional Development (DRD)	1,973	654	2,627
Department for Social Development (DSD)	3,190	4,668	7,858
Department of Health, Social Services and Public Safety (DHSSPS)	449	449	898
Total of 11 Government Departments (Northern Ireland Civil Service)	13,083	12,854	25,937
Fire Service	1,968	220	2,188
NI Audit Office	76	66	142
Northern Ireland Assembly	233	145	378
Northern Ireland Office	813	1,354	2,167
Parliamentary Commissioner for Administration & Complaints	7	12	19
Prison Service	1,528	377	1,905
Police Service of Northern Ireland	7,588	3,662	11,250
NHS Trusts	13,290	58,061	71,351
British Broadcasting Corporation (BBC)	432	342	774
Assets Recovery Agency	29	29	58
BODIES UNDER AEGIS OF NI CENTRAL GOVERNMENT	19,437	54,642	74,079
Office of the First and Deputy First Minister	92	156	248
Department of Agriculture and Rural Development (DARD)	34	46	80
Department for Culture, Arts and Leisure (DCAL)	352	434	786
Department of Enterprise, Trade and Investment (DETI)	375	525	900
Department of Education (DE)	175	289	464
Department of Finance and Personnel (DFP)	21	34	55
Department for Employment and Learning (DEL)	410	396	806
Department of Regional Development (DRD)	1,370	245	1,615
Department of Health & Social Services and Public Safety (DHSSPS)	763	1,216	1,979
Department for Social Development (DSD)	1,747	1,660	3,407
Northern Ireland Office	334	494	828
Education & Library Boards (Non-Teaching)	7,036	31,571	38,607
Teaching Staff in All Schools	6,728	17,576	24,304
UK CENTRAL GOVERNMENT	2,799	3,077	5,876
LOCAL GOVERNMENT (District Councils)	7,001	4,922	11,923
PUBLIC CORPORATIONS	7,793	1,256	9,049
NI Based	4,039	595	4,634
UK Based	3,754	661	4,415
Total	76,077	141,019	217,096

See Notes to Editors, No.4.

Unadjusted and Seasonally Adjusted Series

5

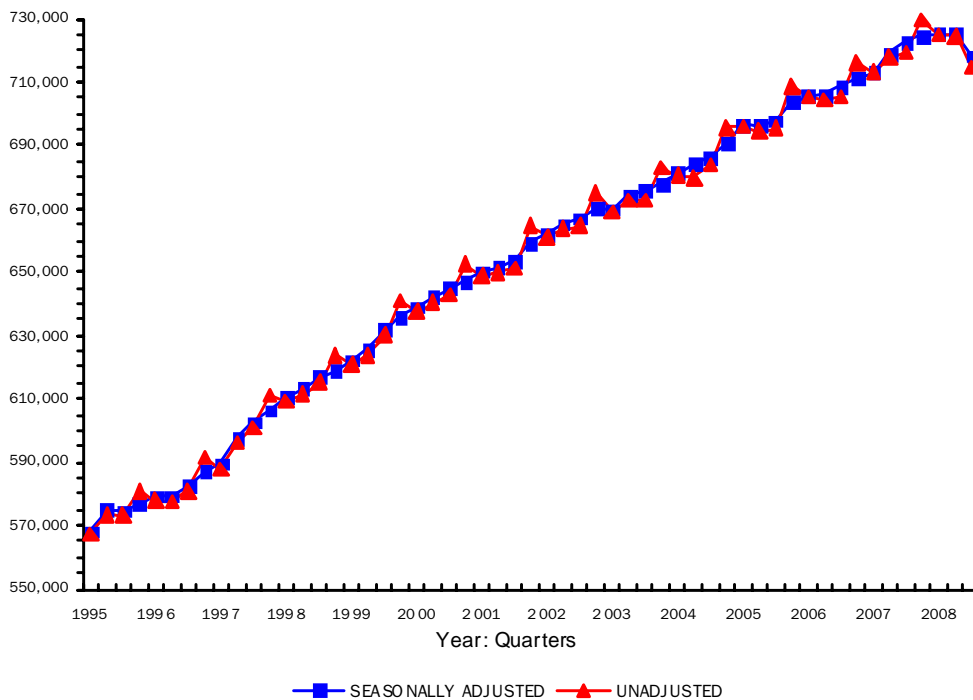
Data are NOT adjusted for seasonality unless otherwise stated

Table 1.6 N.I. Employee Jobs by Broad Industry Sector
Unadjusted & Seasonally Adjusted 1994 – 2008

	Unadjusted					Seasonally Adjusted					
	Manuf.	Const.	Serv.	Other	All	Manuf.	Const.	Serv.	Other	All	
1994	Mar	99,800	23,940	405,940	24,440	554,120	100,270	24,000	406,540	24,440	555,260
	Jun	100,730	23,790	408,600	23,820	556,940	101,120	23,810	409,580	23,820	558,320
	Sep	102,140	24,130	409,880	23,730	559,880	101,770	23,910	411,640	23,730	561,060
	Dec	102,610	23,990	421,320	23,610	571,530	102,140	24,120	417,840	23,610	567,710
1995	Mar	101,810	24,000	417,770	23,530	567,110	102,290	24,090	418,400	23,530	568,310
	Jun	103,590	23,850	421,980	24,000	573,420	103,930	23,850	423,110	24,000	574,890
	Sep	103,970	23,740	421,690	23,940	573,340	103,600	23,520	423,650	23,940	574,710
	Dec	104,340	23,450	429,480	23,730	581,000	103,890	23,540	425,600	23,730	576,750
1996	Mar	104,280	23,240	426,730	23,630	577,880	104,790	23,380	427,420	23,630	579,230
	Jun	103,880	22,830	427,930	22,990	577,640	104,180	22,830	429,220	22,990	579,220
	Sep	104,880	23,030	430,180	22,920	581,020	104,510	22,820	432,260	22,920	582,520
	Dec	106,110	23,210	439,540	22,960	591,820	105,660	23,250	435,330	22,960	587,200
1997	Mar	105,930	22,980	436,320	22,830	588,050	106,450	23,140	437,100	22,830	589,510
	Jun	107,300	27,490	438,570	22,750	596,100	107,610	27,510	439,970	22,750	597,840
	Sep	107,920	28,140	442,300	22,740	601,100	107,550	27,930	444,420	22,740	602,630
	Dec	107,590	28,760	452,860	22,110	611,330	107,140	28,750	448,460	22,110	606,470
1998	Mar	106,580	29,160	451,350	22,020	609,110	107,090	29,330	452,190	22,020	610,620
	Jun	106,680	29,600	453,640	21,590	611,510	106,980	29,670	455,120	21,590	613,360
	Sep	107,840	30,050	455,890	21,490	615,260	107,490	29,850	458,020	21,490	616,860
	Dec	107,270	30,350	464,960	21,400	623,980	106,830	30,290	460,460	21,400	618,980
1999	Mar	105,310	30,560	463,640	21,360	620,870	105,790	30,700	464,510	21,360	622,360
	Jun	105,170	31,290	466,650	20,890	624,000	105,460	31,410	468,100	20,890	625,850
	Sep	105,810	33,100	470,420	20,800	630,130	105,510	32,930	472,680	20,800	631,910
	Dec	105,750	33,930	480,410	20,980	641,060	105,300	33,840	475,800	20,980	635,920
2000	Mar	104,550	34,090	477,900	20,930	637,470	105,000	34,210	478,810	20,930	638,950
	Jun	103,590	34,470	481,200	21,120	640,380	103,850	34,610	482,540	21,120	642,120
	Sep	103,870	35,240	482,620	21,030	642,750	103,630	35,110	485,070	21,030	644,830
	Dec	104,080	35,500	492,060	20,870	652,500	103,670	35,380	487,350	20,870	647,270
2001	Mar	102,790	35,790	489,710	20,610	648,900	103,160	35,880	490,590	20,610	650,250
	Jun	101,710	35,810	492,860	19,650	650,030	101,950	35,950	494,140	19,650	651,690
	Sep	100,190	36,090	495,520	19,630	651,420	99,990	35,990	498,160	19,630	653,770
	Dec	99,120	36,680	509,260	19,590	664,660	98,760	36,570	504,480	19,590	659,400
2002	Mar	97,740	36,560	507,210	19,520	661,040	98,040	36,630	508,000	19,520	662,200
	Jun	97,440	36,300	510,790	19,090	663,630	97,680	36,410	512,070	19,090	665,260
	Sep	96,570	36,280	512,680	19,070	664,600	96,390	36,220	515,480	19,070	667,160
	Dec	95,540	35,870	524,720	19,120	675,250	95,240	35,760	519,910	19,120	670,040

	Unadjusted					Seasonally Adjusted					
	Manuf.	Const.	Serv.	Other	All	Manuf.	Const.	Serv.	Other	All	
2003	Mar	93,520	35,400	520,890	19,100	668,930	93,750	35,460	521,520	19,100	669,840
	Jun	91,890	35,930	525,270	19,510	672,610	92,140	36,020	526,620	19,510	674,290
	Sep	91,880	36,010	525,530	19,480	672,910	91,690	35,970	528,430	19,480	675,580
	Dec	90,850	36,320	536,120	19,550	682,850	90,660	36,220	531,410	19,550	677,850
2004	Mar	90,000	36,200	534,800	19,530	680,530	90,180	36,330	535,180	19,530	681,220
	Jun	88,990	33,820	535,530	19,120	679,900	89,310	36,290	536,980	21,550	684,130
	Sep	89,210	36,320	539,250	19,150	683,930	88,880	36,250	542,080	19,150	686,370
	Dec	88,610	36,590	551,010	19,450	695,650	88,480	36,500	546,460	19,450	690,880
2005	Mar	88,110	36,820	552,050	19,120	696,090	88,230	36,970	552,220	19,120	696,540
	Jun	87,220	37,800	551,610	17,730	694,360	87,560	37,830	553,170	17,730	696,290
	Sep	87,700	38,340	551,620	17,760	695,410	87,340	38,240	554,420	17,760	697,770
	Dec	(R) 87,180	40,230	563,440	17,760	708,600	87,080	40,180	558,630	17,760	703,650
2006	Mar	(R) 87,190	40,970	559,430	17,770	705,360	87,330	41,060	559,440	17,770	705,610
	Jun	(R) 87,140	41,530	558,670	17,130	704,470	87,300	41,470	559,940	17,130	705,840
	Sep	(R) 87,860	41,940	558,480	17,150	705,420	87,650	41,950	562,030	17,150	708,770
	Dec	(R) 87,810	42,450	568,810	17,170	716,230	87,730	42,410	564,030	17,170	711,340
2007	Mar	(R) 87,330	42,810	565,660	17,220	713,030	87,480	42,890	565,640	17,220	713,240
	Jun	(R) 88,070	44,170	568,560	16,970	717,770	88,150	44,100	569,700	16,970	718,910
	Sep	(R) 88,450	44,790	569,090	16,920	719,240	88,310	44,800	572,760	16,920	722,790
	Dec	(R) 88,710	44,840	578,910	17,030	729,500	88,630	44,830	574,140	17,030	724,620
2008	Mar	(R) 88,470	44,090	575,460	16,990	725,010	88,640	44,180	575,510	16,990	725,310
	Jun	(R) 88,460	43,210	575,710	17,100	724,480	88,460	43,130	576,680	17,100	725,370
	Sep	(P) 87,420	41,520	568,630	17,100	714,680	87,350	41,530	572,400	17,100	718,370

Fig 1.4 N.I. Employee Jobs 1995-2008
Unadjusted & Seasonally Adjusted



Special Feature

6

Data are NOT adjusted for seasonality unless otherwise stated

Broad Industry Sector Comparison of NI and GB Employee Jobs

Table 1.7 provides a summary of the change in employee jobs in Great Britain and Northern Ireland between September 1998 and September 2008. It shows that over the last 10 years there has been an increase of 16.2% in the overall number of employee jobs in NI, compared to an increase of 9.1% in GB. It also shows that NI has outperformed GB in all broad industry sectors.

Table 1.7 Employee jobs in Great Britain and Northern Ireland 1998 - 2008

	GB				NI			
	Sep-98	Sep-08	Difference	% Diff	Sep-98	Sep-08	Difference	% Diff
Manufacturing	4,097,300	2,787,000	-1,310,400	-32.0	107,840	87,420	-20,420	-18.9
Construction	1,089,100	1,236,700	147,500	13.5	30,050	41,520	11,470	38.2
Services	18,537,600	22,031,000	3,493,400	18.8	455,890	568,630	112,750	24.7
Other ¹	518,500	405,800	-112,700	-21.7	21,490	17,100	-4,390	-20.4
All Sectors	24,242,600	26,460,400	2,217,800	9.1	615,260	714,680	99,410	16.2

Further analysis of each broad industry sector for the period September 1998 to September 2008 is detailed below.

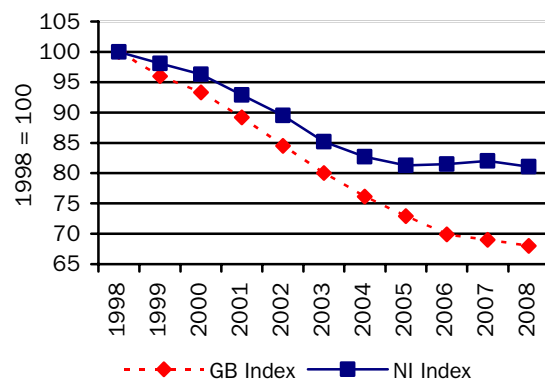
Employee Jobs in Manufacturing

Fig 1.5 shows NI and GB manufacturing jobs indexed to 1998. It illustrates how the level of jobs in the manufacturing sector in both NI and GB has followed a similar trend over the past ten years.

NI manufacturing jobs recorded a marked decline between 1998 and 2005, with the figure for 2005 falling to 81% of the 1998 figure. Manufacturing employee jobs in NI have been fairly stable between 2005 and 2008, with the 2008 figure remaining at 81% of the 1998 level.

Manufacturing jobs in GB have been in sharp decline from 1998 and the 2008 estimate stands at only 68% of the 1998 level. The rate of decline in Manufacturing employee jobs has slowed in 2007 and 2008.

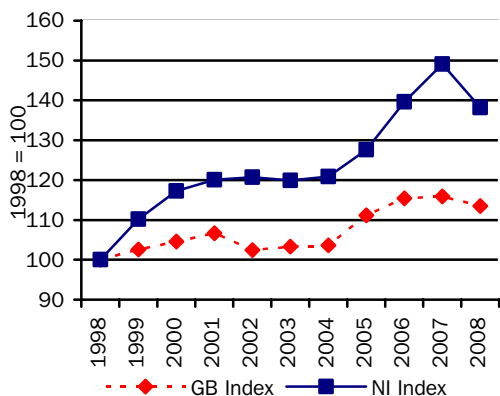
FIG 1.5 - INDEX OF MANUFACTURING JOBS, NI & GB (SEPTEMBER OF EACH YEAR)



Employee Jobs in Construction

Construction jobs, indexed to 1998 for NI and GB are shown in Fig 1.6. During the early to mid 1990's NI and GB construction jobs followed a similar downward trend. However, in 1997 the Inland Revenue introduced a change in tax legislation, which

Fig 1.6 Index of Construction jobs, NI & GB (September of each year)



reclassified self-employed persons to employee status. This caused a rapid growth in the number of construction employee jobs in both GB and NI.

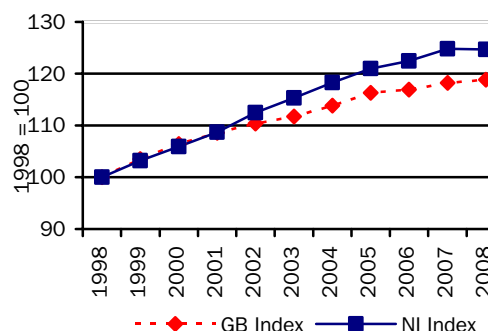
The NI figure continued to grow to a high in 2007 of 49% higher than the 1998 figure. In 2008 construction stands 38% higher than the 1998 figure. The corresponding increase in GB now stands at 13%, having fallen from 16%.

Employee Jobs in the Services Sector

Fig 1.7 shows the NI and GB service sector jobs indexed to 1998. The service sector accounts for the majority of jobs in both NI and GB. At September 1998, service sector jobs represented 74% of all NI employee jobs and 76% of all GB employee jobs.

Both NI and GB have shown a gradual increase in service sector jobs between 1998 and 2008. However the number of service sector jobs in NI has increased at a faster pace than in GB. At 2008, the figure for NI was 25% higher than the 1998 figure, while in GB it was 19% higher.

Fig 1.7 Index of Service Sector Jobs, NI & GB (September of each year)



Employee Jobs in Other Industries

Fig 1.8 Index of Other Industries Jobs, NI & GB (September of each year)

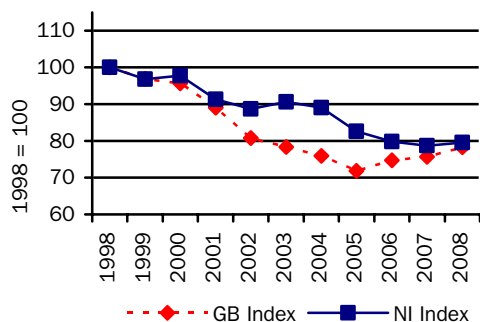


Fig 1.8 illustrates the change in NI and GB employee jobs in Other Industries, indexed to 1998. Other Industries include Agriculture, Forestry & Fishing, Mining & Quarrying and Electricity, Gas & Water Supply.

During the period 1998 to 2008, both NI and GB experienced a fall in the number of employee jobs in Other Industries. Between 2001 and 2005, the rate of fall was larger in GB than in NI. However, since 2005, the GB figure has increased and now is approximately equal to that in NI. The 2008 figure for GB stands at 78% of its 1998 level while the NI now stands at 80% of its 1998 level.

Notes To Editors

7

Note 1

Estimates of the number of employee jobs are obtained from the Quarterly Employment Survey (QES). The QES covers all public sector bodies, all private sector firms with 25 or more employees and a sample of the remainder. The sample size is such that estimates of total employee jobs should be accurate to within +/- 1% of the Census of Employment total. The survey collects information on numbers of persons in full-time and part-time employment. It should be noted that the survey counts the number of jobs rather than the number of persons with jobs. For example, a person holding both a full-time job and a part-time job, or someone with two part-time jobs, will be counted twice.

The QES is a voluntary survey of employers in Northern Ireland and results from it are collated into industry classes using the 2003 Standard Industrial Classification (SIC03). As a result, there is no breach of confidentiality.

Note 2

It is normal practice for Quarterly Employment Survey estimates to be revised, based on employer returns. The revisions are made to each quarter, back as far as the latest published Census of Employment estimate (currently September 2005). The revisions made this quarter reflect additional work that has been carried out to compare completed forms from the 2007 Census of Employment with respondents' returns to the Quarterly Employment Survey.

Note 3

The quarterly survey covers all Industrial Sections apart from Agriculture. Overall employment (i.e. employees and the self-employed) estimates for the agricultural sector are provided, on an annual basis, from the Department of Agriculture and Rural Development's (DARD) Farm Census. Self-employed agriculture workers are defined as including full-time farmers and partners on all agricultural businesses. Agriculture employees include all workers on agricultural businesses other than (a) part-time farmers and partners and (b) farmers' spouses. They include full-time, part-time and casual workers, both paid and unpaid.

Note 4

Public sector jobs comprise Central Government (including Bodies under the aegis of Central Government), Local Government and Public Corporations. An announcement in April 1993 transferred National Health Service Trusts from 'Bodies under the aegis of Central Government' to 'Public Corporations'. A subsequent announcement by the Public Sector Classification Committee (PSCC) in July 2003 stated that all NHS Trusts should retrospectively be reclassified to Central Government. In addition, following advice from PSCC, Northern Ireland Housing Executive employees were reclassified from SIC 75 to SIC 70 in December 2006. This change applies to each quarter from Quarter 1 2004 onwards. From 1st April 2007, The Water Service became a Government owned company known as "Northern Ireland Water". As a result its employees have been transferred from "NI Central Government" to "Bodies under the Aegis of NI Central Government".

Note 5

A seasonally adjusted employment series provides a better indication of underlying trends in employment. This series is available on a consistent basis from June 1978 onwards and figures by main industrial sector from 1994 onwards are shown in Table 1.6.

Note 6

Information on employee jobs at a sub Northern Ireland level (e.g. District Council Area (DCA), Parliamentary Constituency Area (PCA), Ward Level) and at the 5-digit SIC03 level are available from the Northern Ireland Census of Employment. Details of the Census of Employment results are available from Statistics Research Branch Tel: (028) 9052 9379 or on our Internet website www.statistics.detini.gov.uk