



## Northern Ireland

# Quarterly Employment Survey (QES) Supplement

**March 2009** Published 17/06/2009

- The QES is a business survey that has been carried out in Northern Ireland since 1978. The QES has a sample size of approximately 5,400 and covers all employers with at least 25 employees, all public sector employers and a representative sample of smaller firms.
- The March 2009 seasonally adjusted employee jobs figure stands at 715,050
- This represents a seasonally adjusted decrease of 0.9% (or -6,220 jobs) from the revised December 2008 estimate of 721,270.
- Over the quarter seasonally adjusted employee jobs decreased in the Service Sector by 0.5% (2,770 jobs), in the Manufacturing Sector by 2.2% (1,790 jobs), while Construction employee jobs decreased by 3.7% (-1,520 jobs). Jobs in "Other Industries" also decreased by 0.7% (-140 Jobs) over the quarter.
- The March 2009 seasonally unadjusted figure stands at 713,920.
- This represents a seasonally unadjusted decrease of 1.7% (12,680 jobs) since December 2008 and a decrease of 2.6% (19,220 jobs) in the past year.
- Over the year, March 2008 to March 2009, the unadjusted employee jobs figure for the Service Sector decreased by 1.4% (-8,230 jobs), Construction employee jobs decreased by 12.9% (-5,800 jobs), while Manufacturing employee jobs decreased by 5.7% (4,740 jobs).
- The net annual decrease in employee jobs (-19,220) is comprised of decreases in both the number of full-time employee jobs (-18,100) and part-time employee jobs (-1,130).



## **A NATIONAL STATISTICS PUBLICATION**

National Statistics are produced to high professional standards set out in the National Statistics Code of Practice. They undergo regular quality assurance reviews to ensure that they meet customer needs. They are produced free from any political interference.

For general enquiries about National Statistics, contact  
The National Statistics Public Enquiry Service on **0845 601 3034**  
minicom: 01633 812399  
E-mail: [info@statistics.gov.uk](mailto:info@statistics.gov.uk)  
Fax: 01633 652747  
Letters: Room 1015, Government Buildings, Cardiff Road, Newport,  
Gwent, South Wales NP10 8XG

You can also find National Statistics on the Internet – go to  
[www.statistics.gov.uk](http://www.statistics.gov.uk)

Department of Enterprise,  
Trade and Investment

**Northern Ireland  
Quarterly Employment Survey (QES)  
Supplement**

March 2009

Crown Copyright

# Contents

## **1**

Executive Summary  
**Page 1**

## **2**

NI Employee Jobs  
**Page 2-4**

## **3**

2-Digit Breakdown  
**Pages 5-6**

## **4**

Public Sector Data  
**Page 7**

## **5**

Unadjusted & Seasonally Adjusted Series  
**Page 8-9**

## **6**

Special Features  
**Page 10**

## **7**

Notes to Editors  
**Page 11**

# Executive Summary

# 1

## Introduction

This bulletin presents data from the Northern Ireland Quarterly Employment Survey (QES), which is conducted by Statistics Research Branch of the Department of Enterprise, Trade and Investment (DETI).

The QES provides short-term employee jobs estimates for Northern Ireland, which are then used by the Office for National Statistics (ONS) to feed into the calculation of the quarterly workforce jobs estimates for the United Kingdom as a whole.

The QES covers all public sector bodies, all private sector firms with 25 or more employees and a sample of the remainder. The sample size is such that estimates of total employee jobs should be accurate to within +/- 1% of the Census of Employment total. The survey collects information on the number of males/females in full-time and part-time employment by business activity. The results are then collated into industry classes using the 2007 Standard Industrial Classification (SIC07).

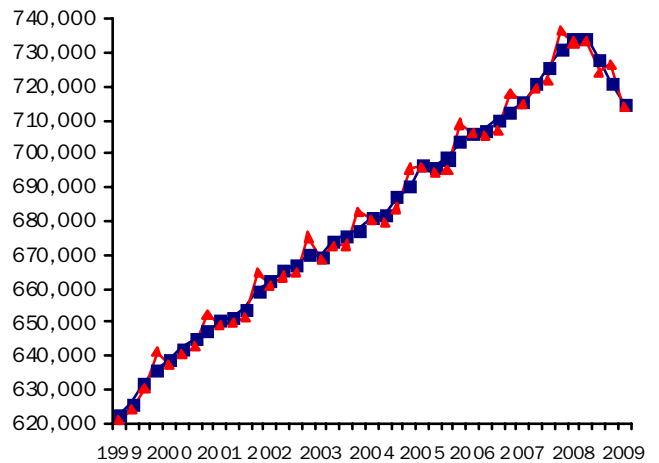
It should be noted that the survey counts the number of jobs rather than the number of persons with jobs. For example, a person holding both a full-time job and part-time job, or someone with two part-time jobs, will be counted twice.

## Seasonally Adjusted

The March 2009 seasonally adjusted employee jobs figure stands at 715,050.

This represents a seasonally adjusted decrease of 0.9% (or -6,220 jobs) from the revised December 2008 estimate of 721,270.

Over the quarter seasonally adjusted employee jobs decreased in the Service Sector by 0.5% (2,770 jobs), in the Manufacturing Sector by 2.2% (1,790 jobs), while Construction employee jobs decreased by 3.7% (-1,520 jobs). Jobs in "Other Industries" also decreased by 0.7% (-140 Jobs) over the quarter.



■ Seasonally Adjusted ▲ Unadjusted

## Unadjusted

The March 2009 seasonally unadjusted figure stands at 713,920.

This represents a seasonally unadjusted decrease of 1.7% (12,680 jobs) since December 2008 and a decrease of 2.6% (19,220 jobs) in the past year.

Over the year, March 2008 to March 2009, the unadjusted employee jobs figure for the Service Sector decreased by 1.4% (-8,230 jobs), Construction employee jobs decreased by 12.9% (-5,800 jobs), while Manufacturing employee jobs decreased by 5.7% (4,740 jobs).

## Date of Next Publication

Quarterly Employment Survey results for Quarter 2 2009 will be published on Wednesday 16th September 2009.

# NI Employee Jobs

## 2

**Data are NOT adjusted for seasonality unless otherwise stated**

### Employee Jobs from the Quarterly Employment Survey

Table 1.1 below provides a summary of the latest results from the Quarterly Employment Survey. It shows that in March 2009 there were an estimated 713,920 employee jobs in Northern Ireland.

**Table 1.1 NI Employee Jobs, Full-time/Part-time Split, March 2009**

	Male		Female		Total	% change in total	
	Full Time	Part Time	Full Time	Part Time		Since last quarter	Since last year
Manufacturing	59,920	1,550	13,850	3,090	78,400	-3.0%	-5.7%
Construction	33,450	1,300	2,940	1,640	39,320	-4.7%	-12.9%
Services	174,830	53,550	170,490	176,420	575,290	-1.4%	-1.4%
Other <sup>1</sup>	10,480	7,790	1,490	1,160	20,910	-0.7%	-2.1%
<b>Total</b>	<b>278,670</b>	<b>64,190</b>	<b>188,760</b>	<b>182,300</b>	<b>713,920</b>	<b>-1.7%</b>	<b>-2.6%</b>

<sup>1</sup> Covers Industry Sections A, B, D and E

\* Figures are rounded to the nearest 10 and may not sum due to rounding

Fig 1.1 shows the Male/Female, Full-time/Part-time breakdown of employee jobs in Northern Ireland, as at March 2009. Female employee jobs account for just over half of all employee jobs in NI (371,060 female employee jobs, compared to 342,860 males). There is, however, a significant difference in the working patterns of male and female employees. Just under half (49.1%) of female employee jobs are part-time, whereas only 18.7% of male employees work on a part-time basis.

**Fig 1.1 Composition of Employee Jobs, March 2009**

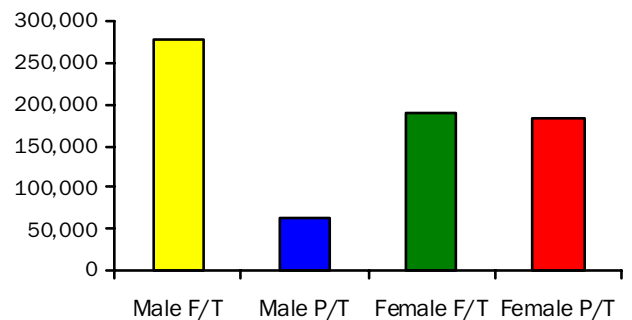
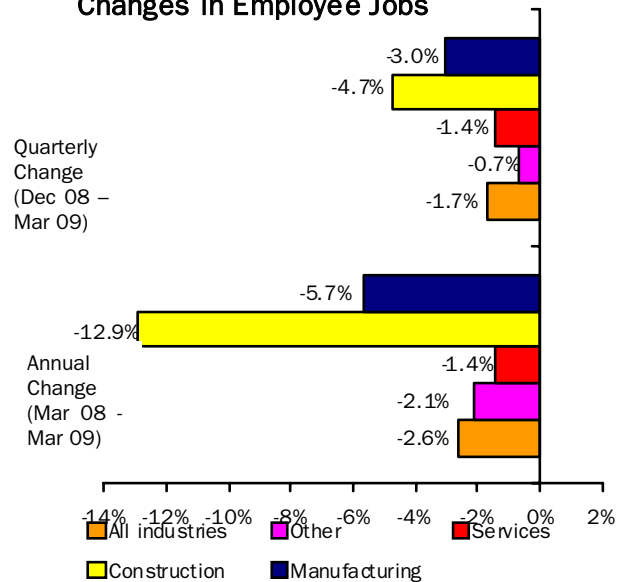


Fig 1.2 shows the annual and quarterly changes in employee jobs. Between December 2008 and March 2009 the number of employee jobs in NI decreased by 12,680. This consisted of a decrease in the Service Sector (-8,190), in Manufacturing (-2,420) and in Construction (-1,930).

Between March 2008 and March 2009 the number of employee jobs decreased by 19,220. There were decreases in the Service Sector (-8,230), in Construction (-5,800), and in Manufacturing (-4,740) while employee jobs in Other Industries fell by 460.

**Fig 1.2 Annual and Quarterly Changes in Employee Jobs**



**FIG 1.3 Employee Jobs, Male/Female, Full-Time/Part-Time Split, March 2009**

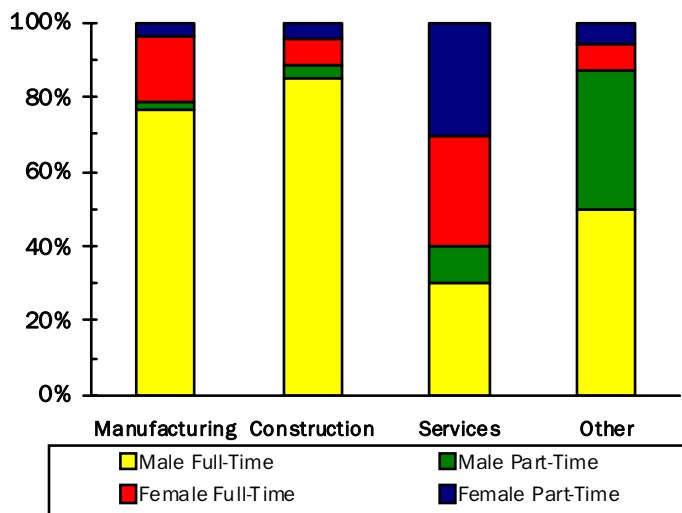


Fig 1.3 shows the male/female, full-time/part-time split for each broad industry sector within Northern Ireland. It highlights the large proportion of employee jobs in the Manufacturing and Construction Sectors that are occupied by male full-time employees (76.4% for Manufacturing, 85.1% for Construction). In contrast, females occupy 60.3% of the 575,290 employee jobs within the Service Sector. These female jobs within Services are in turn divided fairly evenly between full-time (49.1%) and part-time (50.9%) workers.

Table 1.2 on page 4 shows Employee Jobs by Industry Section for March 2009. Comparative figures for the previous quarter (December 2008) and for the previous year (March 2008) are also included.

**Table 1.2 N.I. Employee Jobs by Industry Section**

	SIC 07 Sections	March 2008 (Revised)			December 2008 (Revised)			March 2009 (Provisional)		
		Male	Female	Total	Male	Female	Total	Male	Female	Total
Agriculture, Forestry and Fishing	A	10,760	1,530	12,290	10,760	1,550	12,310	10,740	1,540	12,280
Mining and quarrying	B	1,920	250	2,170	1,750	230	1,980	1,710	230	1,940
Manufacturing	C	65,350	17,790	83,140	63,540	17,280	80,820	61,470	16,930	78,400
Electricity, gas, steam and air conditioning supply	D	1,650	400	2,050	1,750	450	2,200	1,750	440	2,180
Water supply, sewerage, waste management and remediation activities	E	4,290	560	4,860	4,110	460	4,570	4,060	460	4,520
Construction	F	39,990	5,130	45,120	36,490	4,760	41,250	34,750	4,570	39,320
Wholesale and retail trade; repair of motor vehicles and motorcycles	G	60,320	70,590	130,900	61,300	72,630	133,930	59,050	69,120	128,160
Transportation and storage	H	20,670	5,500	26,170	20,810	5,460	26,270	19,980	5,250	25,230
Accommodation and food service activities	I	18,630	24,540	43,160	18,370	23,870	42,240	17,800	23,170	40,960
Information and communication	J	11,320	5,750	17,070	11,000	5,510	16,510	10,880	5,480	16,360
Financial and insurance activities	K	6,560	12,300	18,860	6,540	12,120	18,660	6,490	12,070	18,560
Real estate activities	L	3,180	3,720	6,900	2,970	3,430	6,400	2,950	3,420	6,370
Professional, scientific and technical activities	M	11,220	13,550	24,770	10,900	13,270	24,160	10,680	13,060	23,740
Administrative and support service activities	N	22,900	19,130	42,020	22,700	18,930	41,630	21,370	18,820	40,180
Public administration and defence; compulsory social security	O	31,000	27,380	58,370	30,680	27,360	58,030	30,660	27,500	58,160
Education	P	17,250	55,350	72,600	17,270	55,260	72,530	17,650	56,980	74,630
Human health and social work activities	Q	19,200	96,460	115,660	19,010	96,850	115,860	19,190	96,590	115,770
Arts, entertainment and recreation	R	6,690	6,540	13,230	6,920	6,700	13,630	6,930	6,740	13,660
Other service activities	S	4,820	8,970	13,790	4,800	8,830	13,630	4,770	8,730	13,500
Activities of households as employers; undifferentiated goods- and services-producing activities of households for own use	T	0	0	0	0	0	0	0	0	0
Activities of extraterritorial organizations and bodies	U	0	0	0	0	0	0	0	0	0
<b>TOTAL</b>	<b>A-U</b>	<b>357,710</b>	<b>375,440</b>	<b>733,150</b>	<b>351,670</b>	<b>374,940</b>	<b>726,600</b>	<b>342,860</b>	<b>371,060</b>	<b>713,920</b>

\* Figures are rounded to the nearest 10 and may not sum due to rounding  
Full-time/Part-time estimates available on request

# 2-Digit Breakdown

# 3

**Data are NOT adjusted for seasonality unless otherwise stated**

**Table 1.3 N.I. Employee Jobs by 2-digit SIC07 Class March 2009**

Standard Industrial Classification 2007	Class	Male			Female			All Persons
		Full Time	Part Time	All Males	Full Time	Part Time	All Females	
Crop and animal production, hunting and related service activities	01	2,720	7,600	10,320	480	940	1,430	11,750
Forestry and logging	02	260	10	260	40	40	70	340
Fishing and aquaculture	03	130	20	160	30	10	40	190
Mining of coal and lignite	05	0	0	0	0	0	0	0
Extraction of crude petroleum and natural gas	06	0	0	0	0	0	0	0
Mining of metal ores	07	0	0	0	0	0	0	0
Other mining and quarrying	08	1,680	30	1,710	180	40	230	1,940
Mining support service activities	09	0	0	0	0	0	0	0
Manufacture of food products	10	10,810	700	11,510	4,510	1,210	5,720	17,220
Manufacture of beverages and tobacco products	11/12	1,240	20	1,270	480	60	540	1,820
Manufacture of textiles	13	980	30	1,010	320	100	420	1,430
Manufacture of wearing apparel	14	250	30	280	450	120	570	850
Manufacture of leather and related products	15	30	0	30	30	10	40	70
Manufacture of wood and of products of wood and cork, except furniture; manufacture of articles of straw and plaiting materials	16	2,780	90	2,870	310	110	430	3,300
Manufacture of paper and paper products	17	1,260	10	1,270	250	40	290	1,560
Printing and reproduction of recorded media	18	1,110	20	1,130	410	130	540	1,670
Manufacture of coke and refined petroleum products	19	30	0	30	10	0	10	30
Manufacture of chemicals and chemical products	20	1,230	30	1,260	360	50	410	1,670
Manufacture of basic pharmaceutical products and pharmaceutical preparations	21	890	10	900	550	30	580	1,480
Manufacture of rubber and plastic products	22	4,980	60	5,040	920	200	1,120	6,150
Manufacture of other non-metallic mineral products	23	4,120	110	4,230	690	120	810	5,040
Manufacture of basic metals	24	370	0	370	30	10	40	420
Manufacture of fabricated metal products, except machinery and equipment	25	6,250	130	6,380	590	280	870	7,240
Manufacture of computer, electronic and optical products	26	3,420	20	3,440	1,060	90	1,150	4,590
Manufacture of electrical equipment	27	3,460	40	3,500	650	80	730	4,230
Manufacture of machinery and equipment n.e.c.	28	4,390	60	4,450	500	130	630	5,080
Manufacture of motor vehicles, trailers and semi-trailers	29	2,980	30	3,000	180	30	210	3,220
Manufacture of other transport equipment	30	6,170	10	6,180	860	60	920	7,090
Manufacture of furniture	31	2,320	110	2,440	380	140	510	2,950
Other manufacturing	32	520	30	550	290	80	370	920
Repair and installation of machinery and equipment	33	330	20	350	30	20	50	390
Electricity, gas, steam and air conditioning supply	35	1,740	10	1,750	410	20	440	2,180
Water collection, treatment and supply	36	690	0	690	0	0	0	700
Sewerage	37	220	0	220	30	10	40	270
Waste collection, treatment and disposal activities; materials recovery	38	3,030	120	3,150	320	90	410	3,560
Remediation activities and other waste management services	39	0	0	0	0	0	0	0
Construction of buildings	41	9,050	490	9,540	1,000	620	1,630	11,160
Civil engineering	42	7,360	160	7,520	660	190	850	8,370
Specialised construction activities	43	17,040	650	17,690	1,280	820	2,090	19,790
Wholesale and retail trade and repair of motor vehicles and motorcycles	45	8,980	720	9,710	1,380	740	2,120	11,830

Standard Industrial Classification 2007	Class	Male			Female			All Persons
		Full Time	Part Time	All Males	Full Time	Part Time	All Females	
Wholesale trade, except of motor vehicles and motorcycles	46	15,960	1,030	16,980	4,670	1,810	6,480	23,470
Retail trade, except of motor vehicles and motorcycles	47	16,920	15,440	32,360	19,560	40,960	60,510	92,870
Land transport and transport via pipelines	49	10,290	1,290	11,580	1,110	980	2,090	13,670
Water transport	50	360	0	360	150	20	160	530
Air transport	51	320	20	340	310	120	430	770
Warehousing and support activities for transportation	52	3,170	410	3,580	1,000	390	1,390	4,970
Postal and courier activities	53	3,130	990	4,120	590	590	1,180	5,300
Accommodation	55	2,300	1,970	4,260	2,340	2,660	5,000	9,260
Food and beverage service activities	56	6,160	7,380	13,540	5,490	12,680	18,170	31,700
Publishing activities	58	1,150	70	1,220	760	240	1,000	2,220
Motion picture, video and television programme production, sound recording and music publishing activities	59	350	310	650	180	360	530	1,190
Programming and broadcasting activities	60	590	60	640	410	100	510	1,150
Telecommunications	61	2,340	190	2,530	750	380	1,130	3,650
Computer programming, consultancy and related activities	62	5,620	160	5,780	1,840	420	2,260	8,040
Information service activities	63	50	10	60	30	20	50	110
Financial service activities, except insurance and pension funding	64	4,120	210	4,330	5,460	2,830	8,290	12,620
Insurance, reinsurance and pension funding, except compulsory social security	65	730	40	770	920	310	1,230	2,000
Activities auxiliary to financial services and insurance activities	66	1,300	90	1,390	1,850	700	2,550	3,940
Real estate activities	68	2,720	230	2,950	2,510	920	3,420	6,370
Legal and accounting activities	69	2,400	170	2,570	5,340	1,800	7,140	9,710
Activities of head offices; management consultancy activities	70	970	190	1,160	930	520	1,450	2,610
Architectural and engineering activities; technical testing and analysis	71	3,790	190	3,970	1,170	500	1,670	5,650
Scientific research and development	72	1,050	30	1,080	620	110	720	1,800
Advertising and market research	73	360	130	490	320	260	580	1,070
Other professional, scientific and technical activities	74	770	50	820	430	200	630	1,450
Veterinary activities	75	550	40	590	560	300	860	1,450
Rental and leasing activities	77	1,270	220	1,490	350	290	640	2,130
Employment activities	78	5,770	2,000	7,760	4,480	2,480	6,960	14,720
Travel agency, tour operator and other reservation service and related activities	79	210	30	240	700	330	1,030	1,280
Security and investigation activities	80	3,450	960	4,410	370	250	620	5,030
Services to buildings and landscape activities	81	2,290	1,900	4,190	1,280	5,630	6,910	11,110
Office administrative, office support and other business support activities	82	2,710	560	3,270	1,930	720	2,650	5,920
Public administration and defence; compulsory social security	84	28,170	2,480	30,660	20,880	6,620	27,500	58,160
Education	85	12,910	4,740	17,650	25,630	31,350	56,980	74,630
Human health activities	86	9,710	3,030	12,740	30,740	30,550	61,290	74,030
Residential care activities	87	1,470	570	2,040	4,690	5,750	10,440	12,480
Social work activities without accommodation	88	3,340	1,080	4,420	12,010	12,850	24,850	29,270
Creative, arts and entertainment activities	90	230	140	370	210	260	470	840
Libraries, archives, museums and other cultural activities	91	580	150	730	690	740	1,430	2,160
Gambling and betting activities	92	730	330	1,060	810	600	1,410	2,470
Sports activities and amusement and recreation activities	93	2,560	2,210	4,760	1,150	2,270	3,420	8,190
Activities of membership organisations	94	2,250	1,510	3,760	1,680	2,800	4,480	8,240
Repair of computers and personal and household goods	95	210	20	240	50	50	90	330
Other personal service activities	96	550	220	770	2,170	1,990	4,160	4,930
Activities of households as employers of domestic personnel	97	0	0	0	0	0	0	0
Undifferentiated goods- and services-producing activities of private households for own use	98	0	0	0	0	0	0	0
Activities of extraterritorial organisations and bodies	99	0	0	0	0	0	0	0
<b>Total</b>		<b>278,670</b>	<b>64,190</b>	<b>342,860</b>	<b>188,760</b>	<b>182,300</b>	<b>371,060</b>	<b>713,920</b>

**Table 1.4 N.I. Tourism and Leisure Employee Jobs\* March 2009**

	<b>SIC</b>	<b>Male</b>	<b>Female</b>	<b>Total</b>
Accommodation	55	4,260	5,000	9,260
Food and beverage service activities excluding event catering and other food service activities	56*	12,520	15,990	28,510
Travel agency, tour operator and other reservation service and related activities	79	240	1,030	1,280
Libraries, archives, museums and other cultural activities	91	730	1,430	2,160
Gambling and betting activities	92	1,060	1,410	2,470
Sports activities and amusement and recreation activities	93	4,760	3,420	8,190
<b>Total</b>		<b>23,580</b>	<b>28,280</b>	<b>51,870</b>

\* Figures are rounded to the nearest 10 and may not sum due to rounding

# Public Sector Data

## 4

**Data are NOT adjusted for seasonality unless otherwise stated**

Table 1.5 N.I. Public Sector Employee Jobs March 2009

	Male	Female	Total
<b>NI CENTRAL GOVERNMENT</b>	<b>38,908</b>	<b>76,619</b>	<b>115,527</b>
Office of the First and Deputy First Minister	187	228	415
Department of Agriculture and Rural Development (DARD)	2,498	1,529	4,027
Department for Culture, Arts and Leisure (DCAL)	128	136	264
Department of Enterprise, Trade and Investment (DETI)	315	348	663
Department of Education (DE)	272	406	678
Department of Environment (DOE)	1,529	1,456	2,985
Department of Finance and Personnel (DFP)	1,924	1,716	3,640
Department for Employment and Learning (DEL)	616	1,281	1,897
Department of Regional Development (DRD)	1,973	654	2,627
Department for Social Development (DSD)	3,190	4,668	7,858
Department of Health, Social Services and Public Safety (DHSSPS)	449	449	898
<b>Total of 11 Government Departments (Northern Ireland Civil Service)</b>	<b>13,081</b>	<b>12,871</b>	<b>25,952</b>
Fire Service	1,995	228	2,223
NI Audit Office	77	67	144
Northern Ireland Assembly	230	144	374
Northern Ireland Office	809	1,375	2,184
Parliamentary Commissioner for Administration & Complaints	8	16	24
Prison Service	1,529	422	1,951
Police Service of Northern Ireland	7,519	3,680	11,199
NHS Trusts	13,197	57,441	70,638
British Broadcasting Corporation (BBC)	427	344	771
Assets Recovery Agency	36	31	67
<b>BODIES UNDER AEGIS OF NI CENTRAL GOVERNMENT</b>	<b>18,958</b>	<b>56,952</b>	<b>80,394</b>
Office of the First and Deputy First Minister	102	169	271
Department of Agriculture and Rural Development (DARD)	33	43	76
Department for Culture, Arts and Leisure (DCAL)	343	389	732
Department of Enterprise, Trade and Investment (DETI)	356	527	883
Department of Education (DE)	201	324	525
Department of Finance and Personnel (DFP)	20	37	57
Department for Employment and Learning (DEL)	419	403	822
Department of Regional Development (DRD)	1,301	269	1,570
Department of Health & Social Services and Public Safety (DHSSPS)	755	1,336	2,091
Department for Social Development (DSD)	1,744	1,658	3,402
Northern Ireland Office	349	519	868
Education & Library Boards (Non-Teaching)	7,745	34,300	42,045
Teaching Staff in All Schools	7,275	19,777	27,052
<b>UK CENTRAL GOVERNMENT</b>	<b>2,772</b>	<b>3,026</b>	<b>5,798</b>
<b>LOCAL GOVERNMENT (District Councils)</b>	<b>6,845</b>	<b>4,765</b>	<b>11,610</b>
<b>PUBLIC CORPORATIONS</b>	<b>8,687</b>	<b>3,079</b>	<b>11,766</b>
NI Based	5,060	2,386	7,446
UK Based	3,627	693	4,320
<b>Total</b>	<b>76,170</b>	<b>144,441</b>	<b>225,095</b>

See Notes to Editors, No.4.

# Unadjusted and Seasonally Adjusted Series

# 5

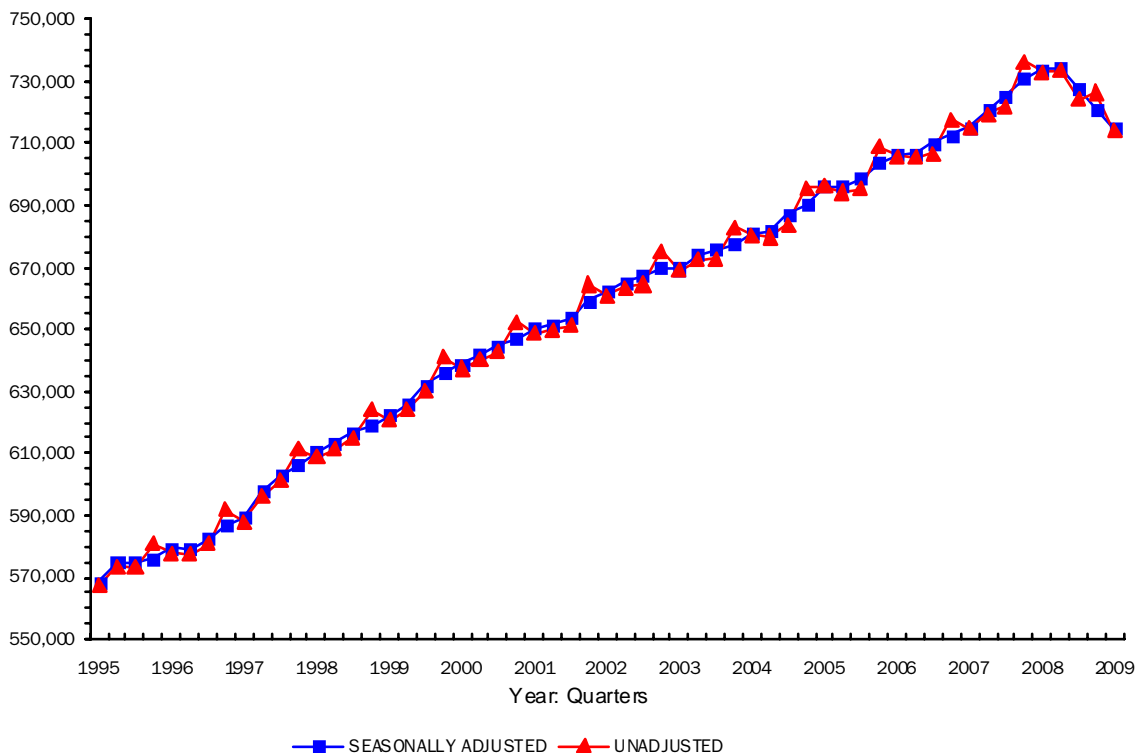
**Data are NOT adjusted for seasonality unless otherwise stated**

**Table 1.6 N.I. Employee Jobs by Broad Industry Sector**  
**Unadjusted & Seasonally Adjusted 1994 – 2009**

	Unadjusted					Seasonally Adjusted				
	Manuf.	Const.	Serv.	Other	All	Manuf.	Const.	Serv.	Other	All
<b>1994 Mar</b>	97,520	24,270	405,450	26,890	554,130	97,940	24,330	406,560	26,890	555,720
<b>Jun</b>	98,420	24,140	408,100	26,280	556,940	98,750	24,130	409,180	26,280	558,340
<b>Sep</b>	99,810	24,480	409,320	26,280	559,890	99,460	24,270	411,730	26,280	561,730
<b>Dec</b>	100,320	24,350	420,720	26,130	571,530	99,910	24,490	416,140	26,130	566,680
<b>1995 Mar</b>	99,550	24,360	417,120	26,090	567,110	100,000	24,450	418,150	26,090	568,680
<b>Jun</b>	101,220	24,230	421,640	26,340	573,420	101,530	24,210	422,840	26,340	574,930
<b>Sep</b>	101,600	24,120	421,170	26,460	573,340	101,240	23,910	423,520	26,460	575,130
<b>Dec</b>	101,960	23,770	429,270	25,990	580,990	101,540	23,880	424,690	25,990	576,090
<b>1996 Mar</b>	101,850	23,580	426,610	25,850	577,880	102,340	23,710	427,570	25,850	579,470
<b>Jun</b>	101,490	23,180	427,730	25,250	577,640	101,770	23,170	429,070	25,250	579,260
<b>Sep</b>	102,470	23,390	429,870	25,290	581,020	102,110	23,180	432,120	25,290	582,700
<b>Dec</b>	103,630	23,570	439,380	25,240	591,810	103,200	23,620	434,840	25,240	586,900
<b>1997 Mar</b>	103,380	23,380	436,190	25,110	588,050	103,890	23,530	437,060	25,110	589,600
<b>Jun</b>	104,730	27,850	438,500	25,020	596,100	105,010	27,870	439,970	25,020	597,870
<b>Sep</b>	105,330	28,510	442,170	25,090	601,090	104,970	28,300	444,350	25,090	602,720
<b>Dec</b>	105,050	29,090	452,830	24,350	611,330	104,620	29,080	448,300	24,350	606,350
<b>1998 Mar</b>	104,050	29,500	451,270	24,280	609,110	104,570	29,670	452,120	24,280	610,630
<b>Jun</b>	104,120	29,940	453,530	23,950	611,530	104,380	30,000	455,050	23,950	613,380
<b>Sep</b>	105,270	30,390	455,720	23,880	615,270	104,940	30,200	457,920	23,880	616,940
<b>Dec</b>	104,660	30,730	464,860	23,740	623,990	104,230	30,680	460,290	23,740	618,930
<b>1999 Mar</b>	102,680	30,960	463,510	23,710	620,870	103,160	31,110	464,350	23,710	622,330
<b>Jun</b>	102,540	31,700	466,440	23,320	624,000	102,800	31,810	467,920	23,320	625,840
<b>Sep</b>	103,080	33,510	470,270	23,270	630,120	102,800	33,340	472,610	23,270	632,020
<b>Dec</b>	103,070	34,360	480,250	23,390	641,070	102,640	34,270	475,550	23,390	635,850
<b>2000 Mar</b>	101,880	34,540	477,710	23,350	637,480	102,330	34,670	478,610	23,350	638,950
<b>Jun</b>	100,910	34,940	480,910	23,620	640,390	101,130	35,060	482,250	23,620	642,070
<b>Sep</b>	101,140	35,690	482,340	23,580	642,750	100,900	35,570	484,920	23,580	644,970
<b>Dec</b>	101,210	35,950	491,970	23,370	652,500	100,840	35,840	487,140	23,370	647,180
<b>2001 Mar</b>	99,990	36,250	489,520	23,140	648,900	100,360	36,350	490,400	23,140	650,250
<b>Jun</b>	98,900	36,250	492,610	22,270	650,030	99,120	36,360	493,880	22,270	651,630
<b>Sep</b>	97,360	36,530	495,230	22,310	651,420	97,140	36,450	498,030	22,310	653,930
<b>Dec</b>	96,250	37,150	508,880	22,390	664,660	95,920	37,030	503,990	22,390	659,330
<b>2002 Mar</b>	94,860	36,990	506,920	22,270	661,040	95,160	37,070	507,640	22,270	662,140
<b>Jun</b>	94,510	36,740	510,490	21,890	663,630	94,730	36,820	511,760	21,890	665,210
<b>Sep</b>	93,620	36,720	512,350	21,920	664,600	93,400	36,680	515,410	21,920	667,410
<b>Dec</b>	92,590	36,310	524,490	21,870	675,260	92,350	36,200	519,520	21,870	669,940

	Unadjusted					Seasonally Adjusted					
	Manuf.	Const.	Serv.	Other	All	Manuf.	Const.	Serv.	Other	All	
2003	Mar	90,560	35,860	520,610	21,900	668,930	90,790	35,940	521,070	21,900	669,690
	Jun	88,990	36,360	524,810	22,440	672,610	89,230	36,410	526,200	22,440	674,290
	Sep	88,970	36,440	525,110	22,380	672,910	88,710	36,430	528,370	22,380	675,890
	Dec	87,940	36,750	535,520	22,640	682,850	87,770	36,640	530,520	22,640	677,560
2004	Mar	87,110	37,100	533,700	22,610	680,530	87,320	37,190	533,910	22,610	681,030
	Jun	86,080	37,180	534,340	22,290	679,900	86,320	37,200	535,790	22,290	681,610
	Sep	86,230	37,270	537,950	22,480	683,930	85,900	37,290	541,410	22,480	687,080
	Dec	85,580	37,550	549,750	22,770	695,660	85,490	37,420	544,710	22,770	690,390
2005	Mar	84,970	37,770	550,930	22,430	696,090	85,170	37,870	550,960	22,430	696,430
	Jun	84,080	38,750	550,400	21,130	694,350	84,290	38,750	551,880	21,130	696,050
	Sep	84,520	39,310	550,270	21,310	695,420	84,150	39,330	553,870	21,310	698,660
	Dec	83,830	41,150	562,530	21,390	708,890	83,780	40,990	557,470	21,390	703,630
2006	Mar	83,730	41,790	559,080	21,390	705,990	83,990	41,940	559,080	21,390	706,400
	Jun	83,550	42,300	558,750	20,830	705,440	83,690	42,300	560,120	20,830	706,940
	Sep	84,210	42,690	559,000	20,910	706,820	83,820	42,700	562,740	20,910	710,170
	Dec	84,040	43,140	569,820	20,990	717,990	84,010	42,970	564,720	20,990	712,690
2007	Mar	83,490	43,460	566,810	21,050	714,820	83,850	43,630	566,890	21,050	715,430
	Jun	84,070	44,710	569,910	20,890	719,590	84,100	44,720	571,140	20,890	720,860
	Sep	84,280	45,320	571,390	21,070	722,060	83,890	45,300	575,170	21,070	725,440
	Dec	(R) 83,450	46,000	585,480	21,450	736,380	83,400	45,820	580,360	21,450	731,030
2008	Mar	(R) 83,140	45,120	583,510	21,370	733,150	83,630	45,330	583,750	21,370	734,080
	Jun	(R) 83,340	44,280	584,260	21,560	733,430	83,270	44,290	585,290	21,560	734,410
	Sep	(R) 82,340	42,890	577,530	21,630	724,390	81,950	42,850	581,350	21,630	727,770
	Dec	(R) 80,820	41,250	583,480	21,050	726,600	80,760	41,070	578,380	21,050	721,270
2009	Mar	(P) 78,400	39,320	575,290	20,910	713,920	78,970	39,550	575,620	20,910	715,050

Fig 1.4 N.I. Employee Jobs 1995-2009  
Unadjusted & Seasonally Adjusted



# Special Feature

# 6

**Data are NOT adjusted for seasonality unless otherwise stated**

Between March 1999 and March 2009 the total number of employee jobs in NI has risen by 93,050 (15.0%). Fig 1.5 illustrates the change in employee job levels over the past 10 years in each of the main industry sectors. It is noticeable that the changes in Manufacturing (-24,280), Construction (+8,350) and Other Industries (-2,800) are relatively small compared to the large increase in Service Sector jobs (+111,780). Indeed, the increase in Services alone accounts for the total increase in employee jobs during the period.

**Fig 1.5 Employee jobs by Main Industry Sector, March 1999 & March 2009**



**FIG 1.6 - CHANGES IN SERVICE SECTOR JOBS MARCH 1999 - MARCH 2009\***

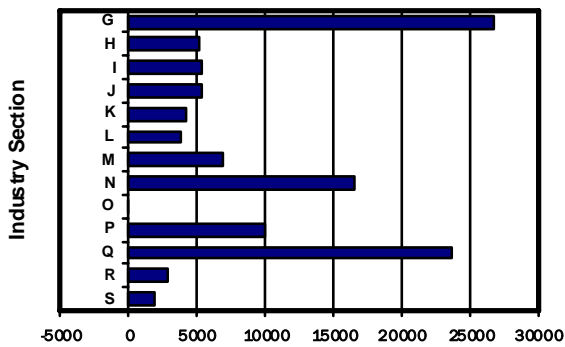


Fig 1.6 shows the change in Service Sector jobs in more detail. It indicates that the largest increases have occurred in Wholesale and Retail Trade; Repair of Motor Vehicles and Motorcycles (+26,730), Human Health & Social Work Activities (+23,540), Administrative and Support Service Activities (+16,550), Education (+9,940), Professional, Scientific and Technical Activities (+6,850). The rise in these five industry sections accounts for over three quarters (77.9%) of the total increase in employee jobs during the last ten years.

The majority of the increase in Wholesale and Retail Trade; Repair Of Motor Vehicles And Motorcycles has occurred in Retail Trade, Except Of Motor Vehicles And Motorcycles (+23,730) with smaller increases in this industry section occurring in the Wholesale and Retail Trade And Repair Of Motor Vehicles And Motorcycles (+2,190) and in Wholesale Trade, Except Of Motor Vehicles And Motorcycles (+810).

The increase in Human Health & Social Work Activities was largely due to an increase of 16,970 in Human Health Activities, with smaller increases occurring in Social Work Activities without Accommodation (+3,560) and in Residential Care Activities (+3,010).

G	Wholesale and retail trade; repair of motor vehicles and motorcycles
H	Transportation and storage
I	Accommodation and food service activities
J	Information and communication
K	Financial and insurance activities
L	Real estate activities
M	Professional, scientific and technical activities
N	Administrative and support service activities
O	Public administration and defence; compulsory social security
P	Education
Q	Human health and social work activities
R	Arts, entertainment and recreation
S	Other service activities

# Notes To Editors

## 7

### **Note 1**

Estimates of the number of employee jobs are obtained from the Quarterly Employment Survey (QES). The QES covers all public sector bodies, all private sector firms with 25 or more employees and a sample of the remainder. The sample size is such that estimates of total employee jobs should be accurate to within +/- 1% of the Census of Employment total. The survey collects information on numbers of persons in full-time and part-time employment. It should be noted that the survey counts the number of jobs rather than the number of persons with jobs. For example, a person holding both a full-time job and a part-time job, or someone with two part-time jobs, will be counted twice.

The QES is a voluntary survey of employers in Northern Ireland and results from it are collated into industry classes using the 2007 Standard Industrial Classification (SIC07). As a result, there is no breach of confidentiality.

### **Note 2**

It is normal practice for Quarterly Employment Survey estimates to be revised, based on employer returns. The revisions are made to each quarter, back as far as the latest published Census of Employment estimate (currently September 2007).

### **Note 3**

The quarterly survey covers all Industrial Sections apart from Agriculture. Overall employment (i.e. employees and the self-employed) estimates for the agricultural sector are provided, on an annual basis, from the Department of Agriculture and Rural Development's (DARD) Farm Census. Self-employed agriculture workers are defined as including full-time farmers and partners on all agricultural businesses. Agriculture employees include all workers on agricultural businesses other than (a) part-time farmers and partners and (b) farmers' spouses. They include full-time, part-time and casual workers, both paid and unpaid.

### **Note 4**

Public sector jobs comprise Central Government (including Bodies under the aegis of Central Government), Local Government and Public Corporations. An announcement in April 1993 transferred National Health Service Trusts from 'Bodies under the aegis of Central Government' to 'Public Corporations'. A subsequent announcement by the Public Sector Classification Committee (PSCC) in July 2003 stated that all NHS Trusts should retrospectively be reclassified to Central Government. In addition, following advice from PSCC, Northern Ireland Housing Executive employees were reclassified from SIC 75 to SIC 70 in December 2006. This change applies to each quarter from Quarter 1 2004 onwards. From 1<sup>st</sup> April 2007, The Water Service became a Government owned company known as "Northern Ireland Water". As a result its employees have been transferred from "NI Central Government" to "Bodies under the Aegis of NI Central Government".

### **Note 5**

A seasonally adjusted employment series provides a better indication of underlying trends in employment. This series is available on a consistent basis from June 1978 onwards and figures by main industrial sector from 1994 onwards are shown in Table 1.6.

### **Note 6**

Information on employee jobs at a sub Northern Ireland level (e.g. District Council Area (DCA), Parliamentary Constituency Area (PCA), Ward Level) and at the 5-digit SIC03 level are available from the Northern Ireland Census of Employment. Details of the Census of Employment results are available from Statistics Research Branch Tel: (028) 9052 9379 or on our Internet website [www.statistics.detini.gov.uk](http://www.statistics.detini.gov.uk)