



## Northern Ireland

# Quarterly Employment Survey (QES) Supplement

**June 2008** Published 17/09/2008

- The QES is a business survey that has been carried out in Northern Ireland since 1978. The QES has a sample size of approximately 5,400 and covers all employers with at least 25 employees, all public sector employers and a representative sample of smaller firms.
- The June 2008 seasonally adjusted employee jobs figure stands at 722,320, the highest figure on record.
- This represents a seasonally adjusted increase of 0.1% (or 480 jobs) from the revised March 2008 estimate of 721,840.
- Over the quarter seasonally adjusted employee jobs increased in the Service Sector by 0.3% (1,510 jobs) while Construction employee jobs decreased by 2.0% (-900 jobs). Jobs in "Other Industries" also decreased by 0.4% (-70 Jobs) over the quarter. Employee jobs in the Manufacturing Sector remained relatively static (-20 jobs).
- The June 2008 seasonally unadjusted figure stands at 720,850, the highest June figure on record.
- This represents a seasonally unadjusted decrease of less than 0.1% (-360 jobs) since March 2008 and an increase of 0.7% (4,670 jobs) in the past year.
- Over the year, June 2007 to June 2008, the unadjusted employee jobs figure for the Service Sector increased by 0.9% (5,320 jobs) and Manufacturing employee jobs increased by 0.3% (230 jobs). Construction employee jobs decreased by 1.8% (-800 jobs).
- The net annual increase in employee jobs (+4,670) is comprised of increases in both the number of full-time employee jobs (+1,690) and part-time employee jobs (+2,980).



## **A NATIONAL STATISTICS PUBLICATION**

National Statistics are produced to high professional standards set out in the National Statistics Code of Practice. They undergo regular quality assurance reviews to ensure that they meet customer needs. They are produced free from any political interference.

For general enquiries about National Statistics, contact  
The National Statistics Public Enquiry Service on **0845 601 3034**  
minicom: 01633 812399  
E-mail: [info@statistics.gov.uk](mailto:info@statistics.gov.uk)  
Fax: 01633 652747  
Letters: Room 1015, Government Buildings, Cardiff Road, Newport,  
Gwent, South Wales NP10 8XG

You can also find National Statistics on the Internet – go to  
[www.statistics.gov.uk](http://www.statistics.gov.uk)

Department of Enterprise,  
Trade and Investment

**Northern Ireland  
Quarterly Employment Survey (QES)  
Supplement**

June 2008

Crown Copyright

# Contents

## **1**

Executive Summary  
**Page 1**

## **2**

NI Employee Jobs  
**Page 2-4**

## **3**

2-Digit Breakdown  
**Pages 5-6**

## **4**

Public Sector Data  
**Page 7**

## **5**

Unadjusted & Seasonally Adjusted Series  
**Page 8-9**

## **6**

Special Features  
**Page 10**

## **7**

Notes to Editors  
**Page 11**

# Executive Summary

# 1

## Introduction

This bulletin presents data from the Northern Ireland Quarterly Employment Survey (QES), which is conducted by Statistics Research Branch of the Department of Enterprise, Trade and Investment (DETI).

The QES provides short-term employee jobs estimates for Northern Ireland, which are then used by the Office for National Statistics (ONS) to feed into the calculation of the quarterly workforce jobs estimates for the United Kingdom as a whole.

The QES covers all public sector bodies, all private sector firms with 25 or more employees and a sample of the remainder. The sample size is such that estimates of total employee jobs should be accurate to within +/- 1% of the Census of Employment total. The survey collects information on the number of males/females in full-time and part-time employment by business activity. The results are then collated into industry classes using the 2003 Standard Industrial Classification (SIC03).

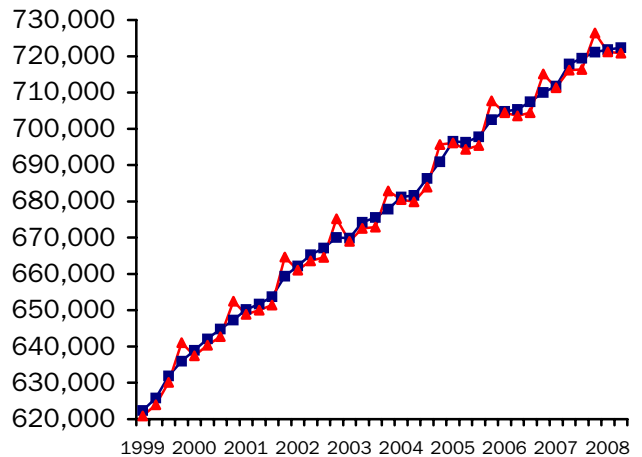
It should be noted that the survey counts the number of jobs rather than the number of persons with jobs. For example, a person holding both a full-time job and part-time job, or someone with two part-time jobs, will be counted twice.

## Seasonally Adjusted

The June 2008 seasonally adjusted employee jobs figure stands at 722,320, the highest figure on record.

This represents a seasonally adjusted increase of 0.1% (or 480 jobs) from the revised March 2008 estimate of 721,840.

Over the quarter seasonally adjusted employee jobs increased in the Service Sector by 0.3% (1,510 jobs) while Construction employee jobs decreased by 2.0% (-900 jobs). Jobs in "Other Industries" also decreased by 0.4% (-70 Jobs) over the quarter. Employee jobs in the Manufacturing Sector remained relatively static (-20 jobs).



■ Seasonally Adjusted ▲ Unadjusted

## Unadjusted

The June 2008 seasonally unadjusted figure stands at 720,850, the highest June figure on record.

This represents a seasonally unadjusted decrease of less than 0.1% (-360 jobs) since March 2008 and an increase of 0.7% (4,670 jobs) in the past year.

Over the year, June 2007 to June 2008, the unadjusted employee jobs figure for the Service Sector increased by 0.9% (5,320 jobs) and Manufacturing employee jobs increased by 0.3% (230 jobs). Construction employee jobs decreased by 1.8% (-800 jobs).

## Date of Next Publication

Quarterly Employment Survey results for Quarter 3 2008 will be published on Wednesday 17th December 2008.

# NI Employee Jobs

## 2

**Data are NOT adjusted for seasonality unless otherwise stated**

### Employee Jobs from the Quarterly Employment Survey

Table 1.1 below provides a summary of the latest results from the Quarterly Employment Survey. It shows that in June 2008 there were an estimated 720,850 employee jobs in Northern Ireland, the highest June figure on record.

**Table 1.1 NI Employee Jobs, Full-time/Part-time Split, June 2008**

	Male		Female		Total	% change in total	
	Full Time	Part Time	Full Time	Part Time		Since last quarter	Since last year
Manufacturing	66,880	2,010	15,810	3,580	88,290	-0.1%	0.3%
Construction	37,110	1,540	3,060	1,640	43,350	-1.7%	-1.8%
Services	176,450	52,230	167,440	176,270	572,400	0.1%	0.9%
Other <sup>1</sup>	7,080	7,640	1,060	1,040	16,810	-0.6%	-0.4%
<b>Total</b>	<b>287,520</b>	<b>63,420</b>	<b>187,370</b>	<b>182,530</b>	<b>720,850</b>	<b>-0.0%</b>	<b>0.7%</b>

<sup>1</sup> Covers Industry Sections A, B, C and E

\* Figures are rounded to the nearest 10 and may not sum due to rounding

Fig 1.1 shows the Male/Female, Full-time/Part-time breakdown of employee jobs in Northern Ireland, as at June 2008. Female employee jobs account for just over half of all employee jobs in NI (369,900 female employee jobs, compared to 350,950 males). There is, however, a significant difference in the working patterns of male and female employees. Just under half (49.3%) of female employee jobs are part-time, whereas only 18.1% of male employees work on a part-time basis.

**Fig 1.1 Composition of Employee Jobs, June 2008**

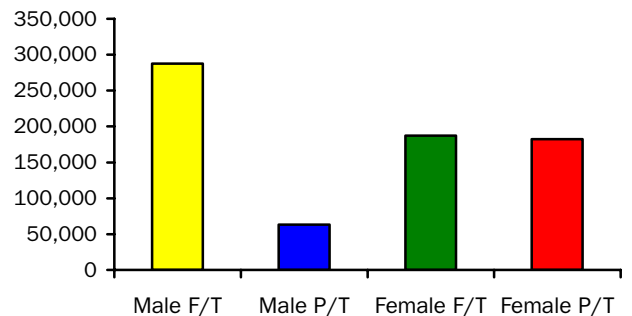
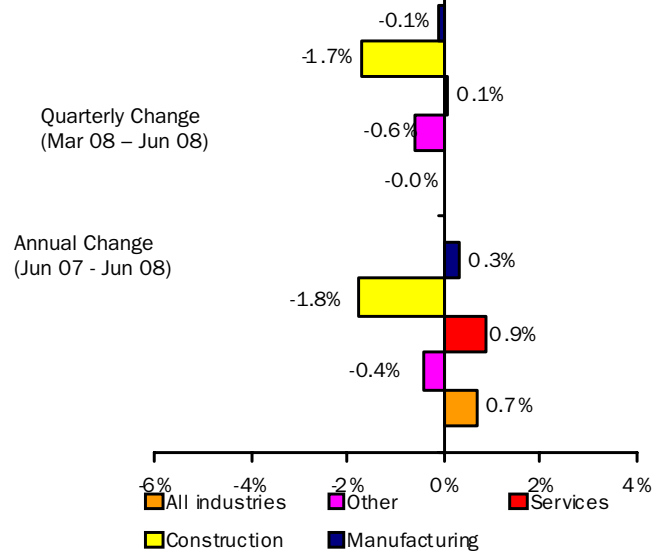


Fig 1.2 shows the annual and quarterly changes in employee jobs. Between March 2008 and June 2008 the number of employee jobs in NI decreased by 360. This consisted of a decrease in Construction (-760), Other Industries (-100) and in Manufacturing (-90) and an increase in the Service Sector (+590).

Between June 2007 and June 2008 the number of employee jobs increased by 4,670. There were increases in the Service Sector (+5,320) and in Manufacturing (+230) while there was a fall in employee jobs in Construction (-800) and in Other Industries (-70).

**Fig 1.2 Annual and Quarterly Changes in Employee Jobs**



**FIG 1.3 Employee Jobs, Male/Female, Full-Time/Part-Time Split, June 2008**

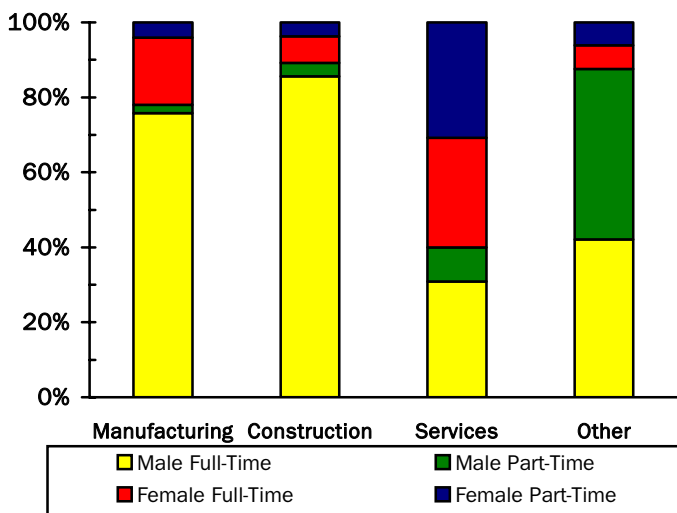


Fig 1.3 shows the male/female, full-time/part-time split for each broad industry sector within Northern Ireland. It highlights the large proportion of employee jobs in the Manufacturing and Construction Sectors that are occupied by male full-time employees (75.8% for Manufacturing, 85.6% for Construction). In contrast, females occupy 60.0% of the 572,400 employee jobs within the Service Sector. These female jobs within Services are in turn divided fairly evenly between full-time (48.7%) and part-time (51.3%) workers.

Table 1.2 on page 4 shows Employee Jobs by Industry Section for June 2008. Comparative figures for the previous quarter (March 2008) and for the previous year (June 2008) are also included.

**Table 1.2 N.I. Employee Jobs by Industry Section**

	SIC 03 Sections	June 2007 (Revised)			March 2008 (Revised)			June 2008 (Provisional)		
		Male	Female	Total	Male	Female	Total	Male	Female	Total
Agriculture, Hunting & Forestry & Fishing	A/B	10,520	1,450	11,970	10,480	1,440	11,920	10,470	1,440	11,910
Mining & Quarrying	C	1,870	260	2,130	1,860	260	2,120	1,830	260	2,090
Manufacturing	D	68,580	19,480	88,060	68,840	19,540	88,380	68,900	19,390	88,290
Electricity, Gas & Water supply	E	2,420	370	2,790	2,480	400	2,880	2,410	400	2,810
Construction	F	39,480	4,670	44,150	39,360	4,750	44,110	38,650	4,700	43,350
Wholesale and Retail Trade; Repairs	G	57,100	65,900	123,000	57,740	67,520	125,260	58,350	68,030	126,380
Hotels & Restaurants	H	18,310	24,380	42,680	17,900	23,900	41,810	18,150	24,050	42,200
Transport, Storage & Communication	I	22,710	7,580	30,290	23,120	7,770	30,890	22,770	7,610	30,380
Financial Intermediation	J	6,280	12,200	18,480	6,410	12,270	18,670	6,390	12,180	18,570
Real Estate, Renting & Business Activities	K	38,640	34,200	72,830	40,470	36,070	76,540	40,300	35,840	76,140
Public Administration and Defence	L	31,540	27,670	59,210	31,110	27,510	58,630	30,880	27,390	58,270
Education	M	17,510	55,620	73,130	16,980	55,190	72,170	17,080	55,160	72,240
Health & Social work	N	19,380	95,890	115,270	19,550	96,060	115,610	19,450	96,030	115,480
Other Service Activities	O	15,150	17,030	32,180	15,060	17,170	32,220	15,330	17,410	32,730
Services	G-O	226,610	340,460	567,080	228,350	343,450	571,800	228,690	343,710	572,400
<b>Total</b>	A-O	349,470	366,700	716,170	351,370	369,830	721,200	350,950	369,900	720,850

\* Figures are rounded to the nearest 10 and may not sum due to rounding  
Full-time/Part-time estimates available on request

# 2-Digit Breakdown

# 3

**Data are NOT adjusted for seasonality unless otherwise stated**

**Table 1.3 N.I. Employee Jobs by 2-digit SIC03 Class June 2008**

Standard Industrial Classification 2003	Class	Male			Female			All Persons
		Full Time	Part Time	All Males	Full Time	Part Time	All Females	
Agriculture, Hunting & Related Activities	1	2,510	7,580	10,090	440	900	1,340	11,430
Forestry, logging and related activities	2	260	10	270	40	30	70	340
Fishing, operation of fish hatcheries	5	100	10	110	20	10	30	150
Mining of coal and lignite: extraction of peat	10	210	10	210	50	0	50	260
Extraction of crude petroleum and natural gas: service activities incidental to oil & gas extraction excl surveying	11	0	0	0	0	0	0	0
Mining of uranium and thorium ores	12	0	0	0	0	0	0	0
Mining of metal ores	13	0	0	0	0	0	0	0
Other mining and quarrying	14	1,590	30	1,620	150	50	210	1,830
Manufacture of food products; beverages and tobacco	15/16	11,890	670	12,550	4,910	1,190	6,100	18,660
Manufacture of textiles	17	1,150	30	1,170	450	120	580	1,750
Manufacture of wearing apparel	18	310	20	340	580	130	700	1,040
Manufacture of leather and leather products	19	40	0	40	30	10	40	80
Manufacture of wood and wood products	20	3,640	150	3,790	400	180	580	4,370
Manufacture of pulp, paper and paper products	21	1,220	10	1,230	290	40	320	1,550
Publishing, printing and production of recorded media	22	2,410	120	2,530	1,290	410	1,700	4,240
Manufacture of coke, refined petroleum products and nuclear fuels	23	30	0	30	10	0	10	30
Manufacture of chemicals and chemical products	24	2,210	40	2,250	940	90	1,030	3,280
Manufacture of rubber and plastic products	25	5,420	320	5,740	1,010	210	1,220	6,960
Manufacture of other non-metallic mineral products	26	5,030	110	5,140	740	150	900	6,030
Manufacture of basic metals	27	450	10	460	30	20	50	510
Manufacture of fabricated metal products except machinery	28	6,560	170	6,730	590	270	860	7,590
Manufacture of machinery and equipment not elsewhere classified	29	6,250	110	6,350	730	200	930	7,290
Manufacture of office machinery and equipment	30	1,830	10	1,840	360	40	400	2,240
Manufacture of electrical machinery and apparatus not elsewhere classified	31	3,150	30	3,170	590	60	650	3,820
Manufacture of radio, television and communication equipment	32	1,410	10	1,410	770	50	820	2,230
Manufacture of medical, precision and optical instruments, watches and clocks	33	730	30	750	270	70	350	1,100
Manufacture of motor vehicles, trailers and semi-trailers	34	3,020	20	3,040	180	40	210	3,260
Manufacture of other transport equipment	35	5,590	10	5,600	610	50	660	6,260
Manufacture of furniture; manufacture not elsewhere classified	36	3,440	130	3,570	760	190	950	4,510
Recycling	37	1,110	40	1,150	280	60	340	1,490
Electricity, gas, steam and hot water supply	40	1,630	0	1,640	360	40	390	2,030
Collection, purification and distribution of water	41	770	0	780	0	0	0	780
Construction	45	37,110	1,540	38,650	3,060	1,640	4,700	43,350
Sale, maintenance and repair of motor vehicles; retail of automotive fuel	50	10,120	1,830	11,950	2,510	2,890	5,400	17,350
Wholesale trade and commission trade	51	15,440	960	16,410	4,460	1,750	6,210	22,610
Retail trade	52	15,730	14,270	29,990	17,710	38,720	56,430	86,420
Hotels and restaurants	55	8,600	9,550	18,150	8,160	15,900	24,050	42,200
Land transport, transport via pipelines	60	10,280	1,330	11,610	1,110	990	2,090	13,700
Water transport	61	400	10	410	170	30	200	610
Air transport	62	240	20	260	300	120	420	680

Standard Industrial Classification 2003	Class	Male			Female			All Persons
		Full Time	Part Time	All Males	Full Time	Part Time	All Females	
Supporting and auxiliary transport activities; travel agents	63	3,190	360	3,550	1,700	650	2,350	5,900
Post and telecommunications	64	5,540	1,400	6,940	1,370	1,180	2,550	9,490
Financial intermediation except insurance and pension funding	65	3,930	190	4,110	5,450	2,700	8,150	12,260
Insurance and pension funding, except compulsory social security	66	900	60	960	1,160	370	1,530	2,490
Activities auxiliary to financial intermediation	67	1,220	90	1,310	1,800	700	2,500	3,810
Real estate activities <sup>1</sup>	70	3,850	390	4,240	2,880	1,110	3,980	8,230
Renting of equipment and machinery without operator	71	1,450	220	1,670	350	310	650	2,330
Computer and related activities	72	5,410	170	5,580	1,830	370	2,200	7,780
Research and development	73	1,040	30	1,080	590	130	720	1,800
Other business activities	74	22,210	5,520	27,730	15,630	12,650	28,280	56,010
Public administration and defence; compulsory social security <sup>1</sup>	75	28,400	2,480	30,880	20,830	6,570	27,390	58,270
Education	80	12,940	4,140	17,080	24,340	30,820	55,160	72,240
Health and social work	85	15,030	4,410	19,450	47,080	48,960	96,030	115,480
Sewage and refuse disposal, sanitation and similar activities	90	2,560	80	2,650	360	190	550	3,200
Activities of membership organisations not elsewhere classified	91	2,240	1,340	3,580	1,740	2,790	4,530	8,100
Recreational, cultural and sporting activities	92	5,100	3,180	8,280	3,510	4,440	7,950	16,240
Other service activities	93	610	210	820	2,390	1,990	4,370	5,200
<b>Total</b>		<b>287,520</b>	<b>63,420</b>	<b>350,950</b>	<b>187,370</b>	<b>182,530</b>	<b>369,900</b>	<b>720,850</b>

\* Figures may not sum due to rounding

<sup>1</sup> See Notes to Editors, No.4

**Table 1.4 N.I. Tourism and Leisure Employee Jobs\* June 2008**

	SIC	Male	Female	Total
Hotels	551	4,280	4,900	9,180
Camping Sites and Other Provision of Short-Stay Accommodation	552	260	390	650
Restaurants	553	7,040	11,560	18,590
Bars	554	5,520	4,560	10,070
Activities of Travel Agencies and Tour Operators; Tourist Assistance Activities not Elsewhere Classified	633	250	1,100	1,350
Libraries, Archives, Museums and Other Cultural Activities	925	790	1,600	2,390
Sporting Activities	926	4,150	3,270	7,430
Other Recreational Activities	927	1,470	1,470	2,950
<b>Total</b>		<b>23,760</b>	<b>28,840</b>	<b>52,610</b>

\* Figures are rounded to the nearest 10 and may not sum due to rounding

# Public Sector Data

# 4

**Data are NOT adjusted for seasonality unless otherwise stated**

Table 1.5 N.I. Public Sector Employee Jobs June 2008

	Male	Female	Total
<b>NI CENTRAL GOVERNMENT</b>	<b>38,969</b>	<b>76,948</b>	<b>115,917</b>
Office of the First and Deputy First Minister	183	225	408
Department of Agriculture and Rural Development (DARD)	2,474	1,499	3,973
Department for Culture, Arts and Leisure (DCAL)	124	134	258
Department of Enterprise, Trade and Investment (DETI)	350	370	720
Department of Education (DE)	272	406	678
Department of Environment (DOE)	1,487	1,427	2,914
Department of Finance and Personnel (DFP)	1,921	1,693	3,614
Department for Employment and Learning (DEL)	605	1,255	1,860
Department of Regional Development (DRD)	1,966	647	2,613
Department for Social Development (DSD)	3,090	4,649	7,739
Department of Health, Social Services and Public Safety (DHSSPS)	452	448	900
<b>Total of 11 Government Departments (Northern Ireland Civil Service)</b>	<b>12,924</b>	<b>12,753</b>	<b>25,677</b>
Fire Service	1,978	214	2,192
NI Audit Office	76	67	143
Northern Ireland Assembly	232	145	377
Northern Ireland Office	808	1,322	2,130
Parliamentary Commissioner for Administration & Complaints	8	12	20
Prison Service	1,519	364	1,883
Police Service of Northern Ireland	7,707	3,698	11,405
NHS Trusts	13,253	57,998	71,251
British Broadcasting Corporation (BBC)	435	346	781
Assets Recovery Agency	29	29	58
<b>BODIES UNDER AEGIS OF NI CENTRAL GOVERNMENT</b>	<b>20,211</b>	<b>57,859</b>	<b>78,070</b>
Office of the First and Deputy First Minister	76	123	199
Department of Agriculture and Rural Development (DARD)	27	21	48
Department for Culture, Arts and Leisure (DCAL)	336	399	735
Department of Enterprise, Trade and Investment (DETI)	350	520	870
Department of Education (DE)	218	329	547
Department of Finance and Personnel (DFP)	23	34	57
Department for Employment and Learning (DEL)	411	397	808
Department of Regional Development (DRD)	1,363	246	1,609
Department of Health & Social Services and Public Safety (DHSSPS)	649	1,098	1,747
Department for Social Development (DSD)	1,750	1,670	3,420
Northern Ireland Office	329	481	810
Education & Library Boards (Non-Teaching)	7,206	32,699	39,905
Teaching Staff in All Schools	7,473	19,842	27,315
<b>UK CENTRAL GOVERNMENT</b>	<b>2,891</b>	<b>3,130</b>	<b>6,021</b>
<b>LOCAL GOVERNMENT (District Councils)</b>	<b>6,941</b>	<b>4,918</b>	<b>11,859</b>
<b>PUBLIC CORPORATIONS</b>	<b>7,747</b>	<b>1,257</b>	<b>9,004</b>
NI Based	4,027	569	4,596
UK Based	3,720	688	4,408
<b>Total</b>	<b>76,759</b>	<b>144,112</b>	<b>220,871</b>

See Notes to Editors, No.4.

# Unadjusted and Seasonally Adjusted Series

# 5

**Data are NOT adjusted for seasonality unless otherwise stated**

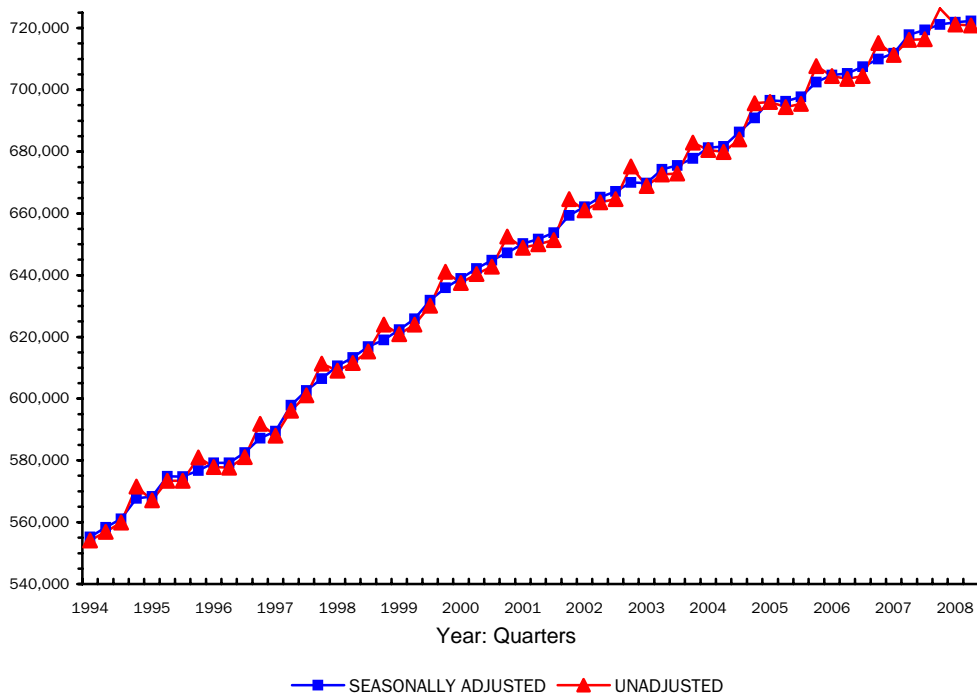
**Table 1.6 N.I. Employee Jobs by Broad Industry Sector**  
**Unadjusted & Seasonally Adjusted 1994 – 2008**

	Unadjusted					Seasonally Adjusted				
	Manuf.	Const.	Serv.	Other	All	Manuf.	Const.	Serv.	Other	All
<b>1994 Mar</b>	99,800	23,940	405,940	24,440	554,120	100,270	24,000	406,540	24,440	555,260
<b>Jun</b>	100,730	23,790	408,600	23,820	556,940	101,120	23,810	409,580	23,820	558,320
<b>Sep</b>	102,140	24,130	409,880	23,730	559,880	101,770	23,910	411,640	23,730	561,060
<b>Dec</b>	102,610	23,990	421,320	23,610	571,530	102,140	24,120	417,840	23,610	567,710
<b>1995 Mar</b>	101,810	24,000	417,770	23,530	567,110	102,290	24,090	418,400	23,530	568,310
<b>Jun</b>	103,590	23,850	421,980	24,000	573,420	103,930	23,850	423,110	24,000	574,890
<b>Sep</b>	103,970	23,740	421,690	23,940	573,340	103,600	23,520	423,650	23,940	574,710
<b>Dec</b>	104,340	23,450	429,480	23,730	581,000	103,890	23,540	425,600	23,730	576,750
<b>1996 Mar</b>	104,280	23,240	426,730	23,630	577,880	104,790	23,380	427,420	23,630	579,230
<b>Jun</b>	103,880	22,830	427,930	22,990	577,640	104,180	22,830	429,220	22,990	579,220
<b>Sep</b>	104,880	23,030	430,180	22,920	581,020	104,510	22,820	432,260	22,920	582,520
<b>Dec</b>	106,110	23,210	439,540	22,960	591,820	105,660	23,250	435,330	22,960	587,200
<b>1997 Mar</b>	105,930	22,980	436,320	22,830	588,050	106,450	23,140	437,100	22,830	589,510
<b>Jun</b>	107,300	27,490	438,570	22,750	596,100	107,610	27,510	439,970	22,750	597,840
<b>Sep</b>	107,920	28,140	442,300	22,740	601,100	107,550	27,930	444,420	22,740	602,630
<b>Dec</b>	107,590	28,760	452,860	22,110	611,330	107,140	28,750	448,460	22,110	606,470
<b>1998 Mar</b>	106,580	29,160	451,350	22,020	609,110	107,090	29,330	452,190	22,020	610,620
<b>Jun</b>	106,680	29,600	453,640	21,590	611,510	106,980	29,670	455,120	21,590	613,360
<b>Sep</b>	107,840	30,050	455,890	21,490	615,260	107,490	29,850	458,020	21,490	616,860
<b>Dec</b>	107,270	30,350	464,960	21,400	623,980	106,830	30,290	460,460	21,400	618,980
<b>1999 Mar</b>	105,310	30,560	463,640	21,360	620,870	105,790	30,700	464,510	21,360	622,360
<b>Jun</b>	105,170	31,290	466,650	20,890	624,000	105,460	31,410	468,100	20,890	625,850
<b>Sep</b>	105,810	33,100	470,420	20,800	630,130	105,510	32,930	472,680	20,800	631,910
<b>Dec</b>	105,750	33,930	480,410	20,980	641,060	105,300	33,840	475,800	20,980	635,920
<b>2000 Mar</b>	104,550	34,090	477,900	20,930	637,470	105,000	34,210	478,810	20,930	638,950
<b>Jun</b>	103,590	34,470	481,200	21,120	640,380	103,850	34,610	482,540	21,120	642,120
<b>Sep</b>	103,870	35,240	482,620	21,030	642,750	103,630	35,110	485,070	21,030	644,830
<b>Dec</b>	104,080	35,500	492,060	20,870	652,500	103,670	35,380	487,350	20,870	647,270
<b>2001 Mar</b>	102,790	35,790	489,710	20,610	648,900	103,160	35,880	490,590	20,610	650,250
<b>Jun</b>	101,710	35,810	492,860	19,650	650,030	101,950	35,950	494,140	19,650	651,690
<b>Sep</b>	100,190	36,090	495,520	19,630	651,420	99,990	35,990	498,160	19,630	653,770
<b>Dec</b>	99,120	36,680	509,260	19,590	664,660	98,760	36,570	504,480	19,590	659,400
<b>2002 Mar</b>	97,740	36,560	507,210	19,520	661,040	98,040	36,630	508,000	19,520	662,200
<b>Jun</b>	97,440	36,300	510,790	19,090	663,630	97,680	36,410	512,070	19,090	665,260
<b>Sep</b>	96,570	36,280	512,680	19,070	664,600	96,390	36,220	515,480	19,070	667,160
<b>Dec</b>	95,540	35,870	524,720	19,120	675,250	95,240	35,760	519,910	19,120	670,040

		Unadjusted					Seasonally Adjusted				
		Manuf.	Const.	Serv.	Other	All	Manuf.	Const.	Serv.	Other	All
2003	Mar	93,520	35,400	520,890	19,100	668,930	93,750	35,460	521,520	19,100	669,840
	Jun	91,890	35,930	525,270	19,510	672,610	92,140	36,020	526,620	19,510	674,290
	Sep	91,880	36,010	525,530	19,480	672,910	91,690	35,970	528,430	19,480	675,580
	Dec	90,850	36,320	536,120	19,550	682,850	90,660	36,220	531,410	19,550	677,850
2004	Mar	90,000	36,200	534,800	19,530	680,530	90,180	36,330	535,180	19,530	681,220
	Jun	88,990	33,820	535,530	19,120	679,900	89,310	36,290	536,980	21,550	684,130
	Sep	89,210	36,320	539,250	19,150	683,930	88,880	36,250	542,080	19,150	686,370
	Dec	88,610	36,590	551,010	19,450	695,650	88,480	36,500	546,460	19,450	690,880
2005	Mar	88,110	36,820	552,050	19,120	696,090	88,230	36,970	552,220	19,120	696,540
	Jun	87,220	37,800	551,610	17,730	694,360	87,560	37,830	553,170	17,730	696,290
	Sep	87,700	38,340	551,620	17,760	695,410	87,340	38,240	554,420	17,760	697,770
	Dec	(R) 87,330	40,170	562,450	17,730	707,690	87,190	40,080	557,540	17,730	702,550
2006	Mar	(R) 87,270	40,910	558,520	17,740	704,450	87,400	41,030	558,660	17,740	704,820
	Jun	(R) 87,200	41,530	557,790	17,040	703,570	87,480	41,510	559,290	17,040	705,330
	Sep	(R) 87,870	41,970	557,550	17,060	704,450	87,600	41,970	560,850	17,060	707,480
	Dec	(R) 87,790	42,470	567,800	17,090	715,150	87,660	42,380	562,840	17,090	709,970
2007	Mar	(R) 87,560	42,850	563,820	17,130	711,350	87,690	42,950	564,020	17,130	711,800
	Jun	(R) 88,060	44,150	567,080	16,890	716,170	88,310	44,130	568,510	16,890	717,830
	Sep	(R) 88,350	44,650	566,470	16,900	716,360	88,100	44,650	569,780	16,900	719,430
	Dec	(R) 88,650	44,730	576,030	16,960	726,370	88,510	44,640	571,020	16,960	721,130
2008	Mar	(R) 88,380	44,110	571,800	16,920	721,200	88,530	44,230	572,170	16,920	721,840
	Jun	(P) 88,290	43,350	572,400	16,810	720,850	88,510	43,320	573,670	16,810	722,320

Fig 1.4 N.I. Employee Jobs 1994-2008

Unadjusted & Seasonally Adjusted



# Special Feature

# 6

**Data are NOT adjusted for seasonality unless otherwise stated**

## Employee jobs in the Public Sector

Table 1.7 shows public sector jobs in Northern Ireland for June 1993 and June 2008. During this period the overall number of public sector jobs, increased by 20,850 (11.5%). There has been contrasting changes in the number of male and female public sector jobs since 1993. Male public sector jobs decreased by 6,566 during the period, whereas female jobs increased by 29,416. This has resulted in females now accounting for 65.2% of all public sector jobs.

**Fig 1.5 NI Employee Jobs in the Public and Private Sectors**

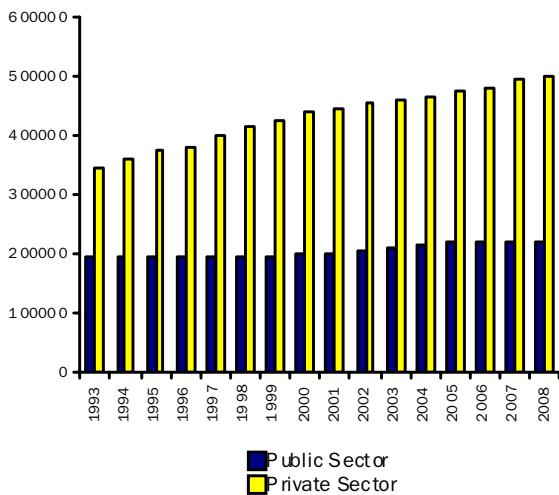


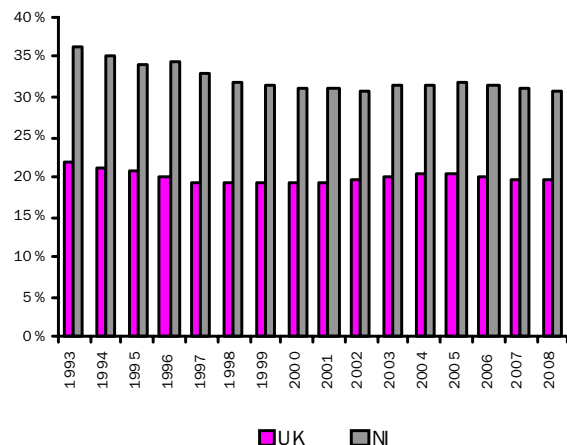
Fig 1.5 shows the total number of employee jobs in Northern Ireland split into Public and Private Sectors. It illustrates that while the level of public sector jobs has remained relatively constant at around 200,000, the level of private sector jobs has increased steadily. Between June 1993 and June 2008, the number of private sector jobs has increased by 153,540 (44.3%), whereas public sector jobs have increased by 22,850 (11.5%). This has resulted in the proportion of public sector jobs to all employee jobs falling from 36% in 1993, to 31% in 2008.

**Table 1.7 NI Public Sector Jobs, June 1993 & June 2008**

	Male	Female	Total
June 1992	83,325	114,696	198,021
June 2007	76,759	144,112	220,871
Difference	-6,566	29,416	22,850
% Difference	-7.9	25.6	11.5

While the proportion of public sector jobs to all jobs has fallen steadily in Northern Ireland, a higher than average concentration of jobs in the public sector still remains. Fig 1.6 compares the proportion of public sector jobs in Northern Ireland with figures for the United Kingdom (in GB, public sector data is now collected on a headcount basis and proportions are calculated by dividing by LFS total employment). Despite the proportion in N.I. falling from 36% in 1993 to 31% in 2008, it is still well above the average for the U.K. (22% in 1993 and 20% in 2008 respectively).

**Fig 1.6 Public Sector Jobs as a Percentage of all Employee Jobs, NI & UK**



# Notes To Editors

## 7

### **Note 1**

Estimates of the number of employee jobs are obtained from the Quarterly Employment Survey (QES). The QES covers all public sector bodies, all private sector firms with 25 or more employees and a sample of the remainder. The sample size is such that estimates of total employee jobs should be accurate to within +/- 1% of the Census of Employment total. The survey collects information on numbers of persons in full-time and part-time employment. It should be noted that the survey counts the number of jobs rather than the number of persons with jobs. For example, a person holding both a full-time job and a part-time job, or someone with two part-time jobs, will be counted twice.

The QES is a voluntary survey of employers in Northern Ireland and results from it are collated into industry classes using the 2003 Standard Industrial Classification (SIC03). As a result, there is no breach of confidentiality.

### **Note 2**

It is normal practice for Quarterly Employment Survey estimates to be revised, based on employer returns. The revisions are made to each quarter, back as far as the latest published Census of Employment estimate (currently September 2005). The revisions made this quarter reflect additional work that has been carried out to compare completed forms from the 2007 Census of Employment with respondents' returns to the Quarterly Employment Survey.

### **Note 3**

The quarterly survey covers all Industrial Sections apart from Agriculture. Overall employment (i.e. employees and the self-employed) estimates for the agricultural sector are provided, on an annual basis, from the Department of Agriculture and Rural Development's (DARD) Farm Census. Self-employed agriculture workers are defined as including full-time farmers and partners on all agricultural businesses. Agriculture employees include all workers on agricultural businesses other than (a) part-time farmers and partners and (b) farmers' spouses. They include full-time, part-time and casual workers, both paid and unpaid.

### **Note 4**

Public sector jobs comprise Central Government (including Bodies under the aegis of Central Government), Local Government and Public Corporations. An announcement in April 1993 transferred National Health Service Trusts from 'Bodies under the aegis of Central Government' to 'Public Corporations'. A subsequent announcement by the Public Sector Classification Committee (PSCC) in July 2003 stated that all NHS Trusts should retrospectively be reclassified to Central Government. In addition, following advice from PSCC, Northern Ireland Housing Executive employees were reclassified from SIC 75 to SIC 70 in December 2006. This change applies to each quarter from Quarter 1 2004 onwards. From 1<sup>st</sup> April 2007, The Water Service became a Government owned company known as "Northern Ireland Water". As a result its employees have been transferred from "NI Central Government" to "Bodies under the Aegis of NI Central Government".

### **Note 5**

A seasonally adjusted employment series provides a better indication of underlying trends in employment. This series is available on a consistent basis from June 1978 onwards and figures by main industrial sector from 1994 onwards are shown in Table 1.6.

### **Note 6**

Information on employee jobs at a sub Northern Ireland level (e.g. District Council Area (DCA), Parliamentary Constituency Area (PCA), Ward Level) and at the 5-digit SIC03 level are available from the Northern Ireland Census of Employment. Details of the Census of Employment results are available from Statistics Research Branch Tel: (028) 9052 9379 or on our Internet website [www.statistics.detini.gov.uk](http://www.statistics.detini.gov.uk)