



Northern Ireland

Quarterly Employment Survey (QES) Supplement

December 2008 Published 18/03/2009

- The QES is a business survey that has been carried out in Northern Ireland since 1978. The QES has a sample size of approximately 5,200 and covers all employers with at least 25 employees, all public sector employers and a representative sample of smaller firms.
- The December 2008 seasonally adjusted employee jobs figure stands at 710,920.
- This represents a seasonally adjusted decrease of 0.8% (or -5,370 jobs) from the revised September 2008 estimate of 716,290.
- Over the quarter seasonally adjusted employee jobs decreased in the Service Sector by 0.4% (-2,220 jobs) and in the Construction Sector by 4.2% (-1,750 jobs), while employee jobs in the Manufacturing sector decreased by 1.7% (-1,440 jobs).
- The December 2008 unadjusted figure stands at 714,950.
- This represents an increase of 0.2% (1,490 jobs) since September 2008 and a decrease of 2.0% (-14,400 jobs) in the past year.
- Over the year, December 2007 to December 2008, the unadjusted employee jobs figure for Construction decreased by 11.4% (-5,090 jobs), while Manufacturing employee jobs decreased by 3.5% (-3,120 jobs) and employee jobs in the Service Sector decreased by 1.1% (-6,290 jobs)
- The net quarterly increase in employee jobs (+1,490) is comprised of an increase in the number of part-time employee jobs (+4,910) and a decrease in the number of full-time employee jobs (-3,410).



A NATIONAL STATISTICS PUBLICATION

National Statistics are produced to high professional standards set out in the National Statistics Code of Practice. They undergo regular quality assurance reviews to ensure that they meet customer needs. They are produced free from any political interference.

For general enquiries about National Statistics, contact
The National Statistics Public Enquiry Service on **0845 601 3034**
minicom: 01633 812399
E-mail: info@statistics.gov.uk
Fax: 01633 652747
Letters: Room 1015, Government Buildings, Cardiff Road, Newport,
Gwent, South Wales NP10 8XG

You can also find National Statistics on the Internet – go to
www.statistics.gov.uk

Department of Enterprise,
Trade and Investment

**Northern Ireland
Quarterly Employment Survey (QES)
Supplement**

December 2008

Crown Copyright

Contents

1

Executive Summary
Page 1

2

NI Employee Jobs
Page 2-4

3

2-Digit Breakdown
Pages 5-6

4

Public Sector Data
Page 7

5

Unadjusted & Seasonally Adjusted Series
Page 8-9

6

Special Features
Page 10

7

Notes to Editors
Page 11

Executive Summary

1

Introduction

This bulletin presents data from the Northern Ireland Quarterly Employment Survey (QES), which is conducted by Statistics Research Branch of the Department of Enterprise, Trade and Investment (DETI).

The QES provides short-term employee jobs estimates for Northern Ireland, which are then used by the Office for National Statistics (ONS) to feed into the calculation of the quarterly workforce jobs estimates for the United Kingdom as a whole.

The QES covers all public sector bodies, all private sector firms with 25 or more employees and a sample of the remainder. The sample size is such that estimates of total employee jobs should be accurate to within +/- 1% of the Census of Employment total. The survey collects information on the number of males/females in full-time and part-time employment by business activity. The results are then collated into industry classes using the 2003 Standard Industrial Classification (SIC03).

It should be noted that the survey counts the number of jobs rather than the number of persons with jobs. For example, a person holding both a full-time job and part-time job, or someone with two part-time jobs, will be counted twice.

In line with Eurostat requirements, readers should note that from June 2009 onwards employee jobs estimates will be published on the new 2007 Standard Industrial Classification basis (SIC07). This will result in greater industry disaggregation and revisions to historical estimates. For more information please see link below:

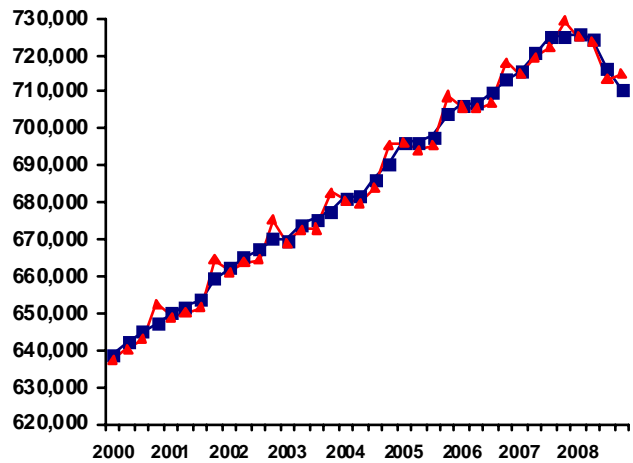
www.statistics.gov.uk/statbase/Product.asp?vlnk=14012

Seasonally Adjusted

The December 2008 seasonally adjusted employee jobs figure stands at 710,920.

This represents a seasonally adjusted decrease of 0.8% (or -5,370 jobs) from the revised September 2008 estimate of 716,290.

Over the quarter seasonally adjusted employee jobs decreased in the Service Sector by 0.4% (-2,220 jobs) and in the Construction Sector by 4.2% (-1,750 jobs), while employee jobs in the Manufacturing sector decreased by 1.7% (-1,440 jobs).



■ Seasonally Adjusted ▲ Unadjusted

Unadjusted

The December 2008 seasonally unadjusted figure stands at 714,950.

This represents an increase of 0.2% (1,490 jobs) since September 2008 and a decrease of 2.0% (-14,400 jobs) in the past year.

Over the year, December 2007 to December 2008, the unadjusted employee jobs figure for Construction decreased by 11.4% (-5,090 jobs), while Manufacturing employee jobs decreased by 3.5% (-3,120 jobs) and employee jobs in the Service Sector decreased by 1.1% (-6,290 jobs).

Date of Next Publication

Quarterly Employment Survey results for Quarter 1 2009 will be published on Wednesday 17th June 2009.

NI Employee Jobs

2

Data are NOT adjusted for seasonality unless otherwise stated

Employee Jobs from the Quarterly Employment Survey

Table 1.1 below provides a summary of the latest results from the Quarterly Employment Survey. It shows that in December 2008 there were an estimated 714,950 employee jobs in Northern Ireland.

Table 1.1 NI Employee Jobs, Full-time/Part-time Split, December 2008

	Male		Female		Total	% change in total	
	Full Time	Part Time	Full Time	Part Time		Since last quarter	Since last year
Manufacturing	64,850	1,930	15,390	3,430	85,600	-1.9%	-3.5%
Construction	34,010	1,370	2,820	1,490	39,680	-4.1%	-11.4%
Services	175,470	53,500	168,410	175,150	572,530	0.8%	-1.1%
Other ¹	7,220	7,600	1,180	1,140	17,140	0.2%	0.6%
Total	281,550	64,390	187,810	181,200	714,950	0.2%	-2.0%

¹ Covers Industry Sections A, B, C and E

* Figures are rounded to the nearest 10 and may not sum due to rounding

Fig 1.1 shows the Male/Female, Full-time/Part-time breakdown of employee jobs in Northern Ireland, as at December 2008. Female employee jobs account for just over half of all employee jobs in NI (369,010 female employee jobs, compared to 345,940 males). There is, however, a significant difference in the working patterns of male and female employees. Almost half (49.1%) of female employee jobs are part-time, whereas only 18.6% of male employees work on a part-time basis.

Fig 1.1 Composition of Employee Jobs, December 2008

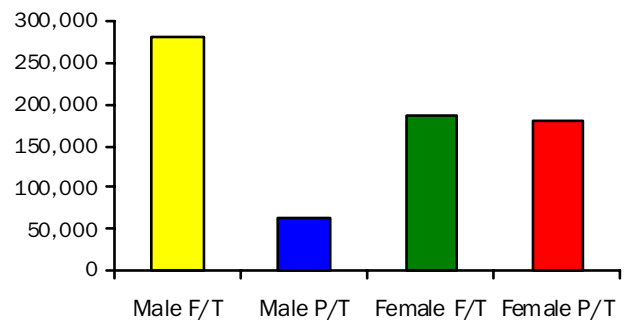


Fig 1.2 shows the annual and quarterly changes in employee jobs. Between September 2008 and December 2008 the number of employee jobs in NI increased by 0.2% (+1,490 jobs). This consisted of an increase in the Service Sector (+4,810), and decreases in Construction (-1,690) and in Manufacturing (-1,650).

Between December 2007 and December 2008 the number of employee jobs decreased by 14,400. This consisted of decreases in the Service Sector (-6,290), Construction (-5,090), and Manufacturing (-3,120), and an increase in Other Industries (+110).

FIG 1.3 Employee Jobs, Male/Female, Full-Time/Part-Time Split, December 2008

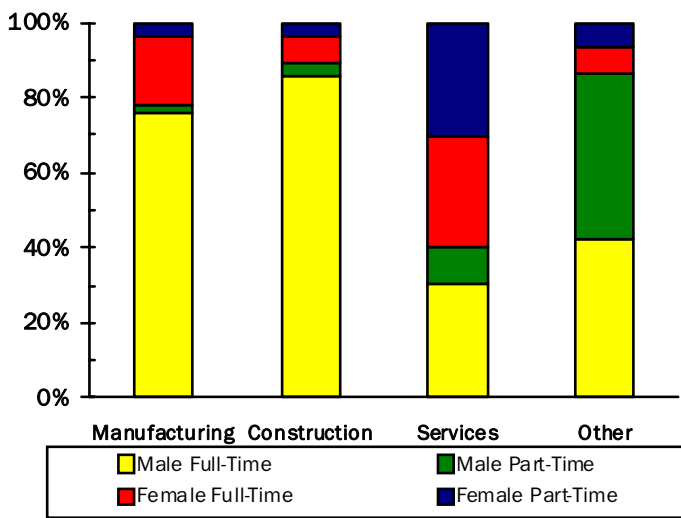


Fig 1.2 Annual and Quarterly Changes in Employee Jobs

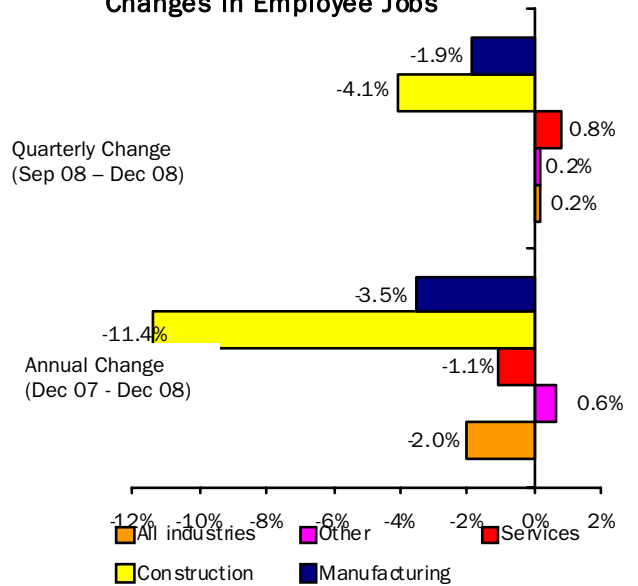


Fig 1.3 shows the male/female, full-time/part-time split for each broad industry sector within Northern Ireland. It highlights the large proportion of employee jobs in the Manufacturing and Construction Sectors that are occupied by male full-time employees (75.8% for Manufacturing, 85.7% for Construction). In contrast, females occupy 60.0% of the 572,530 employee jobs within the Service Sector. These female jobs within Services are in turn divided fairly evenly between full-time (49.0%) and part-time (51.0%) workers.

Table 1.2 on page 4 shows Employee Jobs by Industry Section for December 2008. Comparative figures for the previous quarter (September 2008) and for the previous year (December 2007) are also included.

Table 1.2 N.I. Employee Jobs by Industry Section

	SIC 03 Sections	December 2007 (Revised)			September 2008 (Revised)			December 2008 (Provisional)		
		Male	Female	Total	Male	Female	Total	Male	Female	Total
Agriculture, Hunting & Forestry & Fishing	A/B	10,500	1,440	11,940	10,510	1,610	12,120	10,510	1,610	12,120
Mining & Quarrying	C	1,940	260	2,200	1,880	260	2,140	1,850	260	2,110
Manufacturing	D	68,970	19,760	88,730	67,990	19,270	87,260	66,780	18,820	85,600
Electricity, Gas & Water supply	E	2,490	400	2,890	2,440	400	2,840	2,460	450	2,910
Construction	F	39,930	4,840	44,780	36,880	4,500	41,380	35,370	4,310	39,680
Wholesale and Retail Trade; Repairs	G	60,200	70,640	130,840	58,560	68,440	127,010	58,870	70,500	129,370
Hotels & Restaurants	H	18,490	24,400	42,900	18,230	24,030	42,260	17,850	23,120	40,960
Transport, Storage & Communication	I	23,610	7,950	31,550	23,130	7,800	30,920	23,380	7,880	31,260
Financial Intermediation	J	6,330	12,230	18,550	6,240	11,970	18,210	6,340	12,030	18,370
Real Estate, Renting & Business Activities	K	41,170	36,350	77,530	40,100	35,370	75,470	40,100	34,740	74,840
Public Administration and Defence	L	30,950	27,610	58,560	30,720	27,460	58,180	30,680	27,490	58,170
Education	M	17,070	54,060	71,130	16,210	51,690	67,900	17,170	55,110	72,270
Health & Social work	N	19,470	96,190	115,670	19,570	95,710	115,280	19,350	95,580	114,920
Other Service Activities	O	15,000	17,090	32,090	15,290	17,200	32,490	15,230	17,130	32,350
Services	G-O	232,290	346,530	578,820	228,050	339,670	567,720	228,960	343,560	572,530
Total	A-O	356,130	373,220	729,350	347,740	365,710	713,460	345,940	369,010	714,950

* Figures are rounded to the nearest 10 and may not sum due to rounding
Full-time/Part-time estimates available on request

2-Digit Breakdown

3

Data are NOT adjusted for seasonality unless otherwise stated

Table 1.3 N.I. Employee Jobs by 2-digit SIC03 Class December 2008

Standard Industrial Classification 2003	Class	Male			Female			All Persons
		Full Time	Part Time	All Males	Full Time	Part Time	All Females	
Agriculture, Hunting & Related Activities	1	2,590	7,540	10,130	500	1,010	1,510	11,640
Forestry, logging and related activities	2	260	10	270	40	30	70	330
Fishing, operation of fish hatcheries	5	100	10	110	20	10	30	140
Mining of coal and lignite: extraction of peat	10	210	10	210	50	0	50	270
Extraction of crude petroleum and natural gas: service activities incidental to oil & gas extraction excl surveying	11	0	0	0	0	0	0	0
Mining of uranium and thorium ores	12	0	0	0	0	0	0	0
Mining of metal ores	13	0	0	0	0	0	0	0
Other mining and quarrying	14	1,610	30	1,630	160	50	210	1,840
Manufacture of food products; beverages and tobacco	15/16	12,240	860	13,090	4,870	1,250	6,120	19,220
Manufacture of textiles	17	1,090	20	1,110	410	120	530	1,640
Manufacture of wearing apparel	18	260	20	280	490	90	570	850
Manufacture of leather and leather products	19	40	0	40	30	10	40	80
Manufacture of wood and wood products	20	3,260	120	3,380	360	160	520	3,900
Manufacture of pulp, paper and paper products	21	1,270	10	1,280	270	40	300	1,590
Publishing, printing and production of recorded media	22	2,290	110	2,400	1,190	360	1,550	3,950
Manufacture of coke, refined petroleum products and nuclear fuels	23	30	0	30	10	0	10	30
Manufacture of chemicals and chemical products	24	2,290	40	2,340	1,070	100	1,180	3,510
Manufacture of rubber and plastic products	25	5,240	120	5,370	960	200	1,170	6,530
Manufacture of other non-metallic mineral products	26	4,460	110	4,570	740	130	870	5,430
Manufacture of basic metals	27	420	10	430	30	20	50	480
Manufacture of fabricated metal products except machinery	28	6,210	150	6,370	580	260	840	7,210
Manufacture of machinery and equipment not elsewhere classified	29	5,930	100	6,030	730	190	910	6,950
Manufacture of office machinery and equipment	30	1,910	10	1,920	370	40	400	2,320
Manufacture of electrical machinery and apparatus not elsewhere classified	31	3,200	20	3,220	610	60	660	3,890
Manufacture of radio, television and communication equipment	32	840	10	840	480	50	530	1,370
Manufacture of medical, precision and optical instruments, watches and clocks	33	1,060	10	1,080	450	50	500	1,580
Manufacture of motor vehicles, trailers and semi-trailers	34	2,840	10	2,850	170	20	190	3,050
Manufacture of other transport equipment	35	5,740	20	5,760	630	50	690	6,450
Manufacture of furniture; manufacture not elsewhere classified	36	3,230	120	3,350	690	190	880	4,220
Recycling	37	1,010	40	1,050	270	50	310	1,360
Electricity, gas, steam and hot water supply	40	1,720	0	1,720	410	30	450	2,170
Collection, purification and distribution of water	41	740	0	740	0	0	0	740
Construction	45	34,010	1,370	35,370	2,820	1,490	4,310	39,680
Sale, maintenance and repair of motor vehicles; retail of automotive fuel	50	9,050	1,610	10,660	2,300	2,680	4,980	15,640
Wholesale trade and commission trade	51	14,930	920	15,850	4,350	1,670	6,020	21,870
Retail trade	52	16,350	16,010	32,360	18,070	41,430	59,500	91,860
Hotels and restaurants	55	8,280	9,570	17,850	7,750	15,370	23,120	40,960
Land transport, transport via pipelines	60	10,530	1,320	11,850	1,160	980	2,140	13,990
Water transport	61	400	10	410	160	20	180	590
Air transport	62	250	20	280	270	130	390	670

Standard Industrial Classification 2003	Class	Male			Female			All Persons
		Full Time	Part Time	All Males	Full Time	Part Time	All Females	
Supporting and auxiliary transport activities; travel agents	63	3,340	450	3,790	1,750	750	2,500	6,290
Post and telecommunications	64	5,660	1,400	7,060	1,500	1,160	2,660	9,720
Financial intermediation except insurance and pension funding	65	4,020	210	4,230	5,410	2,810	8,230	12,450
Insurance and pension funding, except compulsory social security	66	780	40	820	970	350	1,320	2,140
Activities auxiliary to financial intermediation	67	1,200	90	1,290	1,790	690	2,490	3,780
Real estate activities ¹	70	3,650	360	4,010	2,710	1,060	3,770	7,770
Renting of equipment and machinery without operator	71	1,220	190	1,420	320	260	580	2,000
Computer and related activities	72	5,490	180	5,670	1,780	390	2,170	7,840
Research and development	73	1,000	30	1,030	560	120	680	1,720
Other business activities	74	22,710	5,260	27,970	15,700	11,840	27,540	55,510
Public administration and defence; compulsory social security ¹	75	28,240	2,440	30,680	20,870	6,610	27,490	58,170
Education	80	12,720	4,440	17,170	25,160	29,950	55,110	72,270
Health and social work	85	15,160	4,180	19,350	47,880	47,700	95,580	114,920
Sewage and refuse disposal, sanitation and similar activities	90	2,520	90	2,610	360	210	570	3,180
Activities of membership organisations not elsewhere classified	91	2,240	1,390	3,630	1,740	2,800	4,530	8,160
Recreational, cultural and sporting activities	92	5,120	3,080	8,200	3,550	4,260	7,810	16,010
Other service activities	93	590	200	790	2,320	1,900	4,210	5,000
Total		281,550	64,390	345,940	187,810	181,200	369,010	714,950

* Figures may not sum due to rounding

¹ See Notes to Editors, No.4

Table 1.4 N.I. Tourism and Leisure Employee Jobs* December 2008

	SIC	Male	Female	Total
Hotels	551	4,270	4,870	9,140
Camping Sites and Other Provision of Short-Stay Accommodation	552	240	350	590
Restaurants	553	6,830	10,930	17,760
Bars	554	5,450	4,430	9,890
Activities of Travel Agencies and Tour Operators; Tourist Assistance Activities not Elsewhere Classified	633	240	1,070	1,310
Libraries, Archives, Museums and Other Cultural Activities	925	750	1,470	2,220
Sporting Activities	926	4,260	3,270	7,530
Other Recreational Activities	927	1,450	1,510	2,970
Total		23,500	27,910	51,410

* Figures are rounded to the nearest 10 and may not sum due to rounding

Public Sector Data

4

Data are NOT adjusted for seasonality unless otherwise stated

Table 1.5 N.I. Public Sector Employee Jobs December 2008

	Male	Female	Total
NI CENTRAL GOVERNMENT	38,813	76,041	114,854
Office of the First and Deputy First Minister	187	228	415
Department of Agriculture and Rural Development (DARD)	2,481	1,512	3,993
Department for Culture, Arts and Leisure (DCAL)	128	136	264
Department of Enterprise, Trade and Investment (DETI)	315	348	663
Department of Education (DE)	272	406	678
Department of Environment (DOE)	1,529	1,456	2,985
Department of Finance and Personnel (DFP)	1,924	1,716	3,640
Department for Employment and Learning (DEL)	616	1,281	1,897
Department of Regional Development (DRD)	1,973	654	2,627
Department for Social Development (DSD)	3,190	4,668	7,858
Department of Health, Social Services and Public Safety (DHSSPS)	449	449	898
Total of 11 Government Departments (Northern Ireland Civil Service) *	13,064	12,854	25,918
Fire Service	1,978	222	2,200
NI Audit Office	78	68	146
Northern Ireland Assembly	232	144	376
Northern Ireland Office	826	1,342	2,168
Parliamentary Commissioner for Administration & Complaints	7	12	19
Prison Service	1,531	422	1,953
Police Service of Northern Ireland	7,574	3,670	11,244
NHS Trusts	13,053	56,933	69,986
British Broadcasting Corporation (BBC)	433	343	776
Assets Recovery Agency	37	31	68
BODIES UNDER AEGIS OF NI CENTRAL GOVERNMENT	20,193	57,841	78,034
Office of the First and Deputy First Minister	93	163	256
Department of Agriculture and Rural Development (DARD)	34	43	77
Department for Culture, Arts and Leisure (DCAL)	360	428	788
Department of Enterprise, Trade and Investment (DETI)	377	517	894
Department of Education (DE)	174	295	469
Department of Finance and Personnel (DFP)	19	38	57
Department for Employment and Learning (DEL)	419	403	822
Department of Regional Development (DRD)	1,331	261	1,592
Department of Health & Social Services and Public Safety (DHSSPS)	775	1,224	1,999
Department for Social Development (DSD)	1,738	1,654	3,392
Northern Ireland Office	342	503	845
Education & Library Boards (Non-Teaching)	7,276	32,701	39,977
Teaching Staff in All Schools	7,255	19,611	26,866
UK CENTRAL GOVERNMENT	2,771	3,045	5,816
LOCAL GOVERNMENT (District Councils)	6,889	4,927	11,816
PUBLIC CORPORATIONS	8,098	1,369	9,467
NI Based	4,079	600	4,679
UK Based	4,019	769	4,788
Total	76,764	143,223	219,987

See Notes to Editors, No.4.

* Please note that we have been unable to include updated employee jobs estimates for the NI Civil Service at December 2008 due to problems resulting from the introduction of the HR Connect system in October 2008. Civil Service employee jobs figures have therefore been held constant from the previously submitted September 2008 return.

Unadjusted and Seasonally Adjusted Series

5

Data are NOT adjusted for seasonality unless otherwise stated

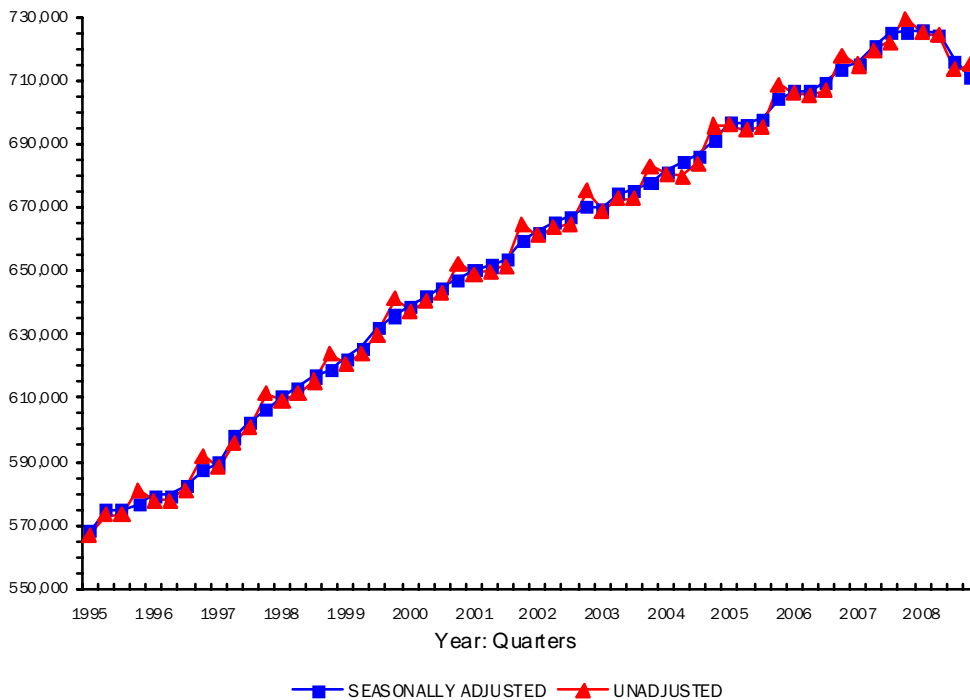
**Table 1.6 N.I. Employee Jobs by Broad Industry Sector
Unadjusted & Seasonally Adjusted 1994 – 2008**

	Unadjusted					Seasonally Adjusted				
	Manuf.	Const.	Serv.	Other	All	Manuf.	Const.	Serv.	Other	All
1994										
Mar	99,800	23,940	405,940	24,440	554,120	100,270	24,000	406,540	24,440	555,260
Jun	100,730	23,790	408,600	23,820	556,940	101,120	23,810	409,580	23,820	558,320
Sep	102,140	24,130	409,880	23,730	559,880	101,770	23,910	411,640	23,730	561,060
Dec	102,610	23,990	421,320	23,610	571,530	102,140	24,120	417,840	23,610	567,710
1995										
Mar	101,810	24,000	417,770	23,530	567,110	102,290	24,090	418,400	23,530	568,310
Jun	103,590	23,850	421,980	24,000	573,420	103,930	23,850	423,110	24,000	574,890
Sep	103,970	23,740	421,690	23,940	573,340	103,600	23,520	423,650	23,940	574,710
Dec	104,340	23,450	429,480	23,730	581,000	103,890	23,540	425,600	23,730	576,750
1996										
Mar	104,280	23,240	426,730	23,630	577,880	104,790	23,380	427,420	23,630	579,230
Jun	103,880	22,830	427,930	22,990	577,640	104,180	22,830	429,220	22,990	579,220
Sep	104,880	23,030	430,180	22,920	581,020	104,510	22,820	432,260	22,920	582,520
Dec	106,110	23,210	439,540	22,960	591,820	105,660	23,250	435,330	22,960	587,200
1997										
Mar	105,930	22,980	436,320	22,830	588,050	106,450	23,140	437,100	22,830	589,510
Jun	107,300	27,490	438,570	22,750	596,100	107,610	27,510	439,970	22,750	597,840
Sep	107,920	28,140	442,300	22,740	601,100	107,550	27,930	444,420	22,740	602,630
Dec	107,590	28,760	452,860	22,110	611,330	107,140	28,750	448,460	22,110	606,470
1998										
Mar	106,580	29,160	451,350	22,020	609,110	107,090	29,330	452,190	22,020	610,620
Jun	106,680	29,600	453,640	21,590	611,510	106,980	29,670	455,120	21,590	613,360
Sep	107,840	30,050	455,890	21,490	615,260	107,490	29,850	458,020	21,490	616,860
Dec	107,270	30,350	464,960	21,400	623,980	106,830	30,290	460,460	21,400	618,980
1999										
Mar	105,310	30,560	463,640	21,360	620,870	105,790	30,700	464,510	21,360	622,360
Jun	105,170	31,290	466,650	20,890	624,000	105,460	31,410	468,100	20,890	625,850
Sep	105,810	33,100	470,420	20,800	630,130	105,510	32,930	472,680	20,800	631,910
Dec	105,750	33,930	480,410	20,980	641,060	105,300	33,840	475,800	20,980	635,920
2000										
Mar	104,550	34,090	477,900	20,930	637,470	105,000	34,210	478,810	20,930	638,950
Jun	103,590	34,470	481,200	21,120	640,380	103,850	34,610	482,540	21,120	642,120
Sep	103,870	35,240	482,620	21,030	642,750	103,630	35,110	485,070	21,030	644,830
Dec	104,080	35,500	492,060	20,870	652,500	103,670	35,380	487,350	20,870	647,270
2001										
Mar	102,790	35,790	489,710	20,610	648,900	103,160	35,880	490,590	20,610	650,250
Jun	101,710	35,810	492,860	19,650	650,030	101,950	35,950	494,140	19,650	651,690
Sep	100,190	36,090	495,520	19,630	651,420	99,990	35,990	498,160	19,630	653,770
Dec	99,120	36,680	509,260	19,590	664,660	98,760	36,570	504,480	19,590	659,400
2002										
Mar	97,740	36,560	507,210	19,520	661,040	98,040	36,630	508,000	19,520	662,200
Jun	97,440	36,300	510,790	19,090	663,630	97,680	36,410	512,070	19,090	665,260
Sep	96,570	36,280	512,680	19,070	664,600	96,390	36,220	515,480	19,070	667,160
Dec	95,540	35,870	524,720	19,120	675,250	95,240	35,760	519,910	19,120	670,040

	Unadjusted					Seasonally Adjusted					
	Manuf.	Const.	Serv.	Other	All	Manuf.	Const.	Serv.	Other	All	
2003	Mar	93,520	35,400	520,890	19,100	668,930	93,750	35,460	521,520	19,100	669,840
	Jun	91,890	35,930	525,270	19,510	672,610	92,140	36,020	526,620	19,510	674,290
	Sep	91,880	36,010	525,530	19,480	672,910	91,690	35,970	528,430	19,480	675,580
	Dec	90,850	36,320	536,120	19,550	682,850	90,660	36,220	531,410	19,550	677,850
2004	Mar	90,000	36,200	534,800	19,530	680,530	90,180	36,330	535,180	19,530	681,220
	Jun	88,990	36,250	535,530	19,120	679,900	89,310	36,290	536,980	21,550	684,130
	Sep	89,210	36,320	539,250	19,150	683,930	88,880	36,250	542,080	19,150	686,370
	Dec	88,610	36,590	551,010	19,450	695,650	88,480	36,500	546,460	19,450	690,880
2005	Mar	88,110	36,820	552,050	19,120	696,090	88,230	36,970	552,220	19,120	696,540
	Jun	87,220	37,800	551,610	17,730	694,360	87,560	37,830	553,170	17,730	696,290
	Sep	87,700	38,340	551,620	17,760	695,410	87,340	38,240	554,420	17,760	697,770
	Dec	(R) 87,080	40,080	563,950	17,780	708,890	86,970	39,990	559,380	17,780	704,130
2006	Mar	(R) 86,990	40,770	560,430	17,810	706,000	87,180	40,900	560,620	17,810	706,510
	Jun	(R) 86,840	41,280	560,120	17,190	705,430	87,010	41,220	561,290	17,190	706,720
	Sep	(R) 87,450	41,670	560,450	17,230	706,810	87,180	41,690	563,510	17,230	709,610
	Dec	(R) 87,310	42,130	571,270	17,270	717,990	87,250	42,050	566,940	17,270	713,520
2007	Mar	(R) 86,740	42,450	568,280	17,350	714,810	86,950	42,590	568,510	17,350	715,380
	Jun	(R) 87,380	43,750	571,340	17,110	719,590	87,470	43,670	572,260	17,110	720,510
	Sep	(R) 87,650	44,330	573,000	17,080	722,060	87,400	44,340	576,070	17,080	724,890
	Dec	(R) 88,730	44,780	578,820	17,030	729,350	88,690	44,720	574,680	17,030	725,120
2008	Mar	(R) 88,460	44,030	575,390	16,990	724,860	88,690	44,180	575,690	16,990	725,550
	Jun	(R) 88,360	43,150	575,350	17,100	723,960	88,370	43,040	576,040	17,100	724,550
	Sep	(R) 87,260	41,380	567,720	17,100	713,460	87,030	41,380	570,780	17,100	716,290
	Dec	(P) 85,600	39,680	572,530	17,140	714,950	85,590	39,630	568,550	17,140	710,920

Fig 1.4 N.I. Employee Jobs 1995-2008

Unadjusted & Seasonally Adjusted



Special Feature

6

Data are NOT adjusted for seasonality unless otherwise stated

Focus on Manufacturing Employee Jobs

Figure 1.5 shows Northern Ireland and Great Britain's manufacturing jobs, indexed to 1998. It illustrates how the level of jobs in the manufacturing sector in both NI and GB has followed a broadly similar trend over the past 10 years.

NI manufacturing jobs recorded a marked decline between 1998 and 2005, with the figure for 2005 falling to 81% of the 1998 figure. Manufacturing employee jobs in NI have been fairly stable between 2005 and 2007, with the 2007 figure remaining at 83% of the 1998 level. However manufacturing jobs have fallen again and at 2008 were at 80% of their 1998 level.

Manufacturing jobs in GB have been in sharp decline from 1998 and the 2008 estimate stands at only 68% of the 1998 level.

Table 1.7 below highlights the changes that have occurred in the structure of Northern Ireland manufacturing jobs between 1998-2003 and 2003-2008.

Fig 1.5 Manufacturing Jobs for NI & GB Indexed (December of Each Year)

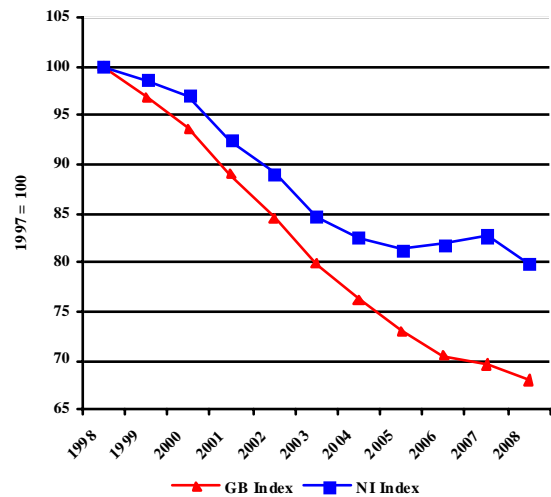


Table 1.7 Changes in the structure of Manufacturing Jobs (NI)

	Manufacturing Subsection	Dec-98	Dec-03	Dec-08	Change 1998-2003	Change 2003-2008
DA	Food Products; Beverages & Tobacco	20,140	19,220	19,220	-920	0
DB	Textiles & Textile Products	20,710	7,520	2,490	-13,190	-5040
DC	Leather & Leather Products	400	140	80	-270	-60
DD	Wood & Wood Products	3,050	3,270	3,900	220	620
DE	Pulp & Paper; Publishing & Printing	6,620	5,960	5,540	-660	-420
DF	Coke, Petroleum Prods & Nuclear Fuel	50	60	30	10	-30
DG	Chemical Products & Man-Made Fibres	3,590	3,410	3,510	-180	110
DH	Rubber & Plastic Products	7,130	7,210	6,530	80	-680
DI	Other Non-Metallic Mineral Products	4,860	5,450	5,430	590	-20
DJ	Basic Metals & Fabricated Metal Prods	6,080	7,200	7,690	1,120	490
DK	Machinery & Equipment, (NEC)	7,010	6,610	6,950	-400	340
DL	Electrical & Optical Equipment	11,430	10,130	9,150	-1,300	-980
DM	Transport Equipment	12,160	10,580	9,490	-1,590	-1080
DN	Manuf Not Elsewhere Classified (NEC)	4,020	4,090	5,590	70	1490
D	All Manufacturing	107,270	90,850	85,600	-16,420	-5250

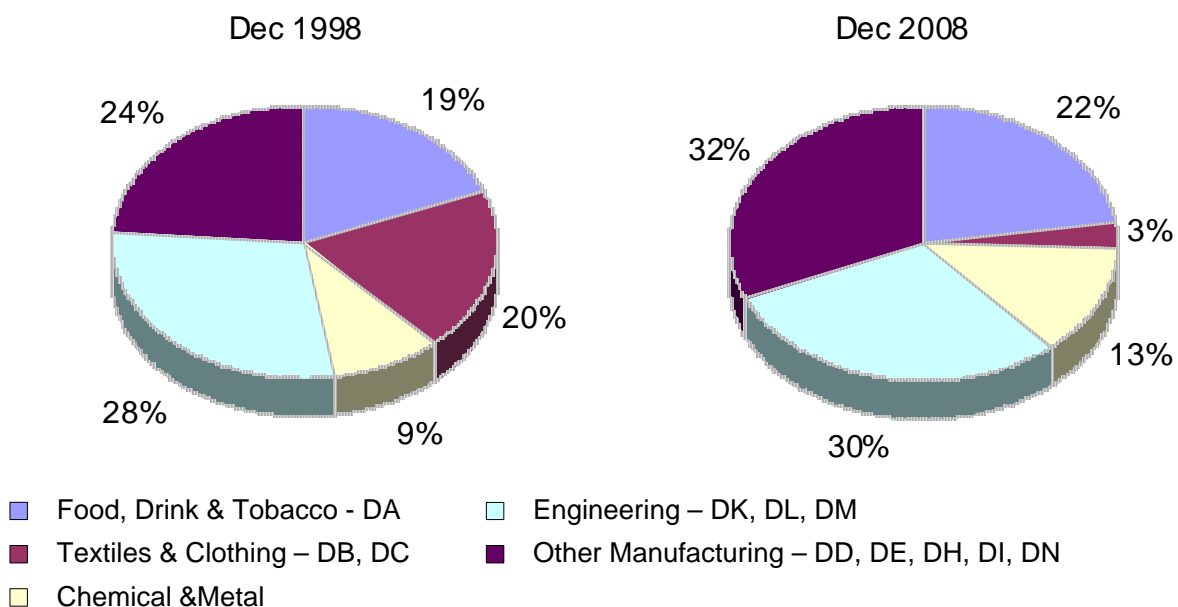
During 1998-2003 manufacturing jobs decreased by 16,420, with 8 of the 14 manufacturing subsections recording a decrease. The largest decrease occurred in the Manufacture of Textiles and Textile Products, which recorded 13,190 fewer jobs. Other significant decreases were recorded in the Manufacture of Transport Equipment (-1,590), in the Manufacture of Electrical and Optical Equipment (-1,300 jobs), in Food Products; Beverages and Tobacco (-920), in Manufacturing of Paper and Pulp; Publishing and Printing (-660 jobs) and in the Manufacture of Machinery and Equipment not elsewhere classified (-400). However, these decreases were partially offset by increases in the Manufacture of Basic Metals and Fabricated Metal Products (+1,120) and in Manufacture of Other Non-Metallic Mineral Products (+590).

During 2003–2008 the number of manufacturing jobs fell by 5,250 (-5.8%), with large falls occurring in three manufacturing subsections. The Manufacture of Textiles and Textile Products recorded job losses amounting to 5,040, while the number of employee jobs in the Manufacture of Transport Equipment fell by 1,080. There were 980 fewer jobs recorded in the Manufacture of Electrical and Optical Equipment.

Fig 1.6 Manufacturing in Northern Ireland by Broad Manufacturing Group

Figure 1.6 below shows the structure of manufacturing jobs in Northern Ireland by broad manufacturing group at December 1998 and December 2008. It illustrates how the decline in the manufacture of textiles and clothing has impacted on the structure of Northern Ireland manufacturing jobs.

In 1998 around one in every five manufacturing jobs were located in the Textiles and Clothing industry but by 2008 this had fallen to one in every thirty. The Other Manufacturing sector accounts for most jobs within manufacturing. It accounted for 24% of manufacturing jobs in 1998 and by 2008 this figure has risen to 32%.



Notes To Editors

7

Note 1

Estimates of the number of employee jobs are obtained from the Quarterly Employment Survey (QES). The QES covers all public sector bodies, all private sector firms with 25 or more employees and a sample of the remainder. The sample size is such that estimates of total employee jobs should be accurate to within +/- 1% of the Census of Employment total. The survey collects information on numbers of persons in full-time and part-time employment. It should be noted that the survey counts the number of jobs rather than the number of persons with jobs. For example, a person holding both a full-time job and a part-time job, or someone with two part-time jobs, will be counted twice.

The QES is a voluntary survey of employers in Northern Ireland and results from it are collated into industry classes using the 2003 Standard Industrial Classification (SIC03). As a result, there is no breach of confidentiality.

Note 2

It is normal practice for Quarterly Employment Survey estimates to be revised, based on employer returns. The revisions are made to each quarter, back as far as the latest published Census of Employment estimate (currently September 2007). The revisions made this quarter reflect additional work that has been carried out to compare completed forms from the 2007 Census of Employment with respondents' returns to the Quarterly Employment Survey.

Note 3

The quarterly survey covers all Industrial Sections apart from Agriculture. Overall employment (i.e. employees and the self-employed) estimates for the agricultural sector are provided, on an annual basis, from the Department of Agriculture and Rural Development's (DARD) Farm Census. Self-employed agriculture workers are defined as including full-time farmers and partners on all agricultural businesses. Agriculture employees include all workers on agricultural businesses other than (a) part-time farmers and partners and (b) farmers' spouses. They include full-time, part-time and casual workers, both paid and unpaid.

Note 4

Public sector jobs comprise Central Government (including Bodies under the aegis of Central Government), Local Government and Public Corporations. An announcement in April 1993 transferred National Health Service Trusts from 'Bodies under the aegis of Central Government' to 'Public Corporations'. A subsequent announcement by the Public Sector Classification Committee (PSCC) in July 2003 stated that all NHS Trusts should retrospectively be reclassified to Central Government. In addition, following advice from PSCC, Northern Ireland Housing Executive employees were reclassified from SIC 75 to SIC 70 in December 2006. This change applies to each quarter from Quarter 1 2004 onwards. From 1st April 2007, The Water Service became a Government owned company known as "Northern Ireland Water". As a result its employees have been transferred from "NI Central Government" to "Bodies under the Aegis of NI Central Government".

Note 5

A seasonally adjusted employment series provides a better indication of underlying trends in employment. This series is available on a consistent basis from June 1978 onwards and figures by main industrial sector from 1994 onwards are shown in Table 1.6.

Note 6

Information on employee jobs at a sub Northern Ireland level (e.g. District Council Area (DCA), Parliamentary Constituency Area (PCA), Ward Level) and at the 5-digit SIC03 level are available from the Northern Ireland Census of Employment. Details of the Census of Employment results are available from Statistics Research Branch Tel: (028) 9052 9379 or on our Internet website www.statistics.detini.gov.uk