



## Northern Ireland

# Quarterly Employment Survey (QES) Supplement

**December 2007** Published 19/03/2008

- The QES is a business survey that has been carried out in Northern Ireland since 1978. The QES has a sample size of approximately 5,400 and covers all employers with at least 25 employees, all public sector employers and a representative sample of smaller firms.
- The December 2007 seasonally adjusted employee jobs figure stands at 722,070, the highest figure on record.
- This represents a seasonally adjusted increase of 0.3% (or 1,900 jobs) from the revised September 2007 estimate of 720,170.
- Over the quarter seasonally adjusted employee jobs increased in the Service Sector by 0.4% (2,030 jobs) and in the Manufacturing Sector by 0.2% (220 jobs), while employee jobs in the Construction Sector decreased by -0.9% (420 jobs).
- The December 2007 seasonally unadjusted figure stands at 727,090, the highest figure on record.
- This represents an increase of 1.4% (or 10,020 jobs) from the revised September 2007 estimate of 717,070.
- Over the year, December 2006 to December 2007, the unadjusted employee jobs figure for the Service Sector increased by 1.9% (10,850 jobs), while Construction employee jobs increased by 5.0% (2,110 jobs) and Manufacturing employee jobs increased by 0.7% (620 jobs).
- The net annual increase in employee jobs (+13,460) is comprised of increases in both the number of full-time employee jobs (+7,370) and part-time employee jobs (+6,100).

## **A NATIONAL STATISTICS PUBLICATION**

National Statistics are produced to high professional standards set out in the National Statistics Code of Practice. They undergo regular quality assurance reviews to ensure that they meet customer needs. They are produced free from any political interference.

For general enquiries about National Statistics, contact  
The National Statistics Public Enquiry Service on **0845 601 3034**  
minicom: 01633 812399  
E-mail: [info@statistics.gov.uk](mailto:info@statistics.gov.uk)  
Fax: 01633 652747  
Letters: Room 1015, Government Buildings, Cardiff Road, Newport,  
Gwent, South Wales NP10 8XG

You can also find National Statistics on the Internet – go to  
[www.statistics.gov.uk](http://www.statistics.gov.uk)

Department of Enterprise,  
Trade and Investment

**Northern Ireland**  
**Quarterly Employment Survey (QES)**  
**Supplement**

December 2007

Crown Copyright

# Contents

## **1**

Executive Summary  
**Page 1**

## **2**

NI Employee Jobs  
**Page 2-4**

## **3**

2-Digit Breakdown  
**Pages 5-6**

## **4**

Public Sector Data  
**Page 7**

## **5**

Unadjusted & Seasonally Adjusted Series  
**Page 8-9**

## **6**

Special Features  
**Page 10**

## **7**

Notes to Editors  
**Page 11**

# Executive Summary

# 1

## Introduction

This bulletin presents data from the Northern Ireland Quarterly Employment Survey (QES), which is conducted by Statistics Research Branch of the Department of Enterprise, Trade and Investment (DETI).

The QES provides short-term employee jobs estimates for Northern Ireland, which are then used by the Office for National Statistics (ONS) to feed into the calculation of the quarterly workforce jobs estimates for the United Kingdom as a whole.

The QES covers all public sector bodies, all private sector firms with 25 or more employees and a sample of the remainder. The sample size is such that estimates of total employee jobs should be accurate to within +/- 1% of the Census of Employment total. The survey collects information on the number of males/females in full-time and part-time employment by business activity. The results are then collated into industry classes using the 2003 Standard Industrial Classification (SIC03).

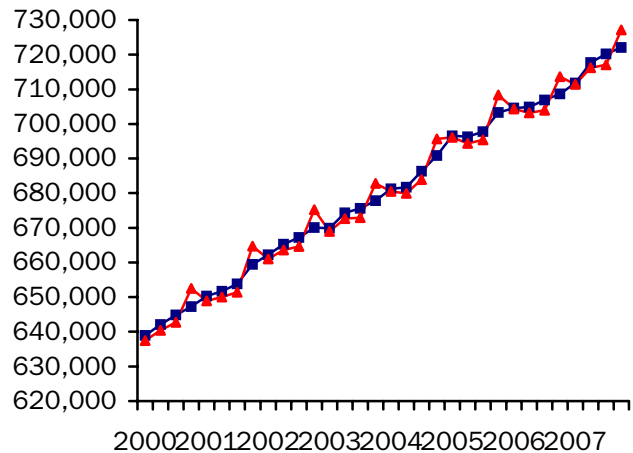
It should be noted that the survey counts the number of jobs rather than the number of persons with jobs. For example, a person holding both a full-time job and part-time job, or someone with two part-time jobs, will be counted twice.

## Seasonally Adjusted

The December 2007 seasonally adjusted employee jobs figure stands at 722,070, the highest figure on record.

This represents a seasonally adjusted increase of 0.3% (or 1,900 jobs) from the revised September 2007 estimate of 720,170.

Over the quarter seasonally adjusted employee jobs increased in the Service Sector by 0.4% (2,030 jobs) and in the Manufacturing Sector by 0.2% (220 jobs), while employee jobs in the Construction Sector decreased by -0.9% (420 jobs).



—■— Seasonally Adjusted —▲— Unadjusted

## Unadjusted

The December 2007 seasonally unadjusted figure stands at 727,090, the highest figure on record.

This represents an increase of 1.4% (or 10,020 jobs) from the revised September 2007 estimate of 717,070.

Over the year, December 2006 to December 2007, the unadjusted employee jobs figure for the Service Sector increased by 1.9% (10,850 jobs), while Construction employee jobs increased by 5.0% (2,110 jobs) and Manufacturing employee jobs increased by 0.7% (620 jobs).

## Date of Next Publication

Quarterly Employment Survey results for Quarter 1 2008 will be published on Wednesday 11th June 2008.

# NI Employee Jobs

## 2

**Data are NOT adjusted for seasonality unless otherwise stated**

### Employee Jobs from the Quarterly Employment Survey

Table 1.1 below provides a summary of the latest results from the Quarterly Employment Survey. It shows that in December 2007 there were an estimated 727,090 employee jobs in Northern Ireland, the highest figure on record.

**Table 1.1 NI Employee Jobs, Full-time/Part-time Split, December 2007**

	Male		Female		Total	% change in total	
	Full Time	Part Time	Full Time	Part Time		Since last quarter	Since last year
Manufacturing	67,030	1,990	16,020	3,630	88,670	0.2%	0.7%
Construction	38,170	1,610	3,090	1,710	44,580	-0.8%	5.0%
Services	177,200	53,450	167,420	178,810	576,870	1.8%	1.9%
Other <sup>1</sup>	7,230	7,640	1,060	1,040	16,970	0.4%	-0.7%
<b>Total</b>	<b>289,640</b>	<b>64,680</b>	<b>187,590</b>	<b>185,190</b>	<b>727,090</b>	<b>1.4%</b>	<b>1.9%</b>

<sup>1</sup> Covers Industry Sections A, B, C and E

\* Figures are rounded to the nearest 10 and may not sum due to rounding

Fig 1.1 shows the Male/Female, Full-time/Part-time breakdown of employee jobs in Northern Ireland, as at December 2007. Female employee jobs account for just over half of all employee jobs in NI (372,770 female employee jobs, compared to 354,320 males). There is, however, a significant difference in the working patterns of male and female employees. Almost half (49.7%) of female employee jobs are part-time, whereas only 18.3% of male employees work on a part-time basis.

**Fig 1.1 Composition of Employee Jobs, December 2007**

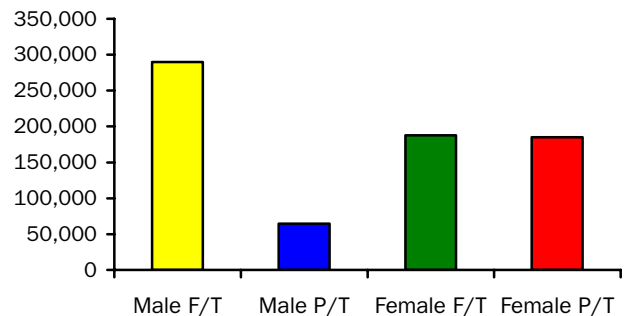
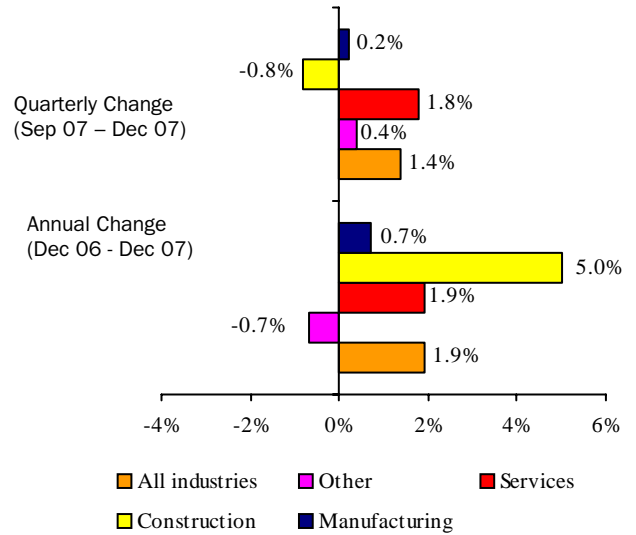


Fig 1.2 shows the annual and quarterly changes in employee jobs. Between September 2007 and December 2007 the number of employee jobs in NI increased by 1.4% (10,020 jobs). This consisted of increases in the Service Sector (+10,170) and in Manufacturing (+160), and a decrease in Construction (-380).

Between December 2006 and December 2007 the number of employee jobs increased by 13,460. This consisted of increases in the Service Sector (+10,850), Construction (+2,110) and Manufacturing (+620) and a decrease in Other Industries (-120).

**Fig 1.2 Annual and Quarterly Changes in Employee Jobs**



**FIG 1.3 Employee Jobs, Male/Female, Full-Time/Part-Time Split, December 2007**

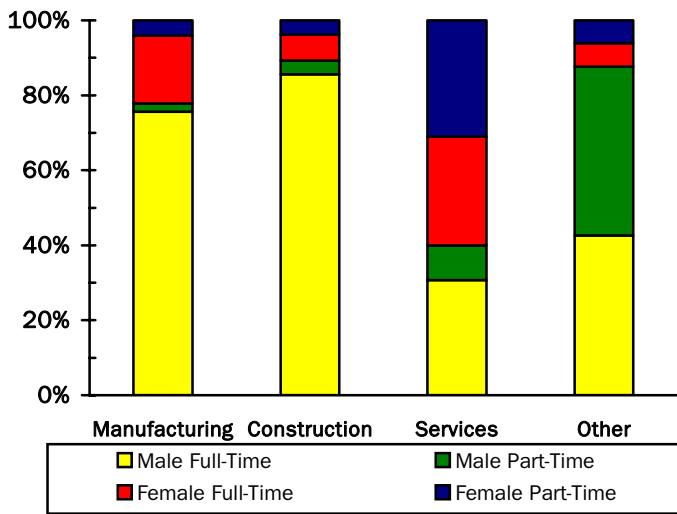


Fig 1.3 shows the male/female, full-time/part-time split for each broad industry sector within Northern Ireland. It highlights the large proportion of employee jobs in the Manufacturing and Construction Sectors that are occupied by male full-time employees (75.6% for Manufacturing, 85.6% for Construction). In contrast, females occupy 60.0% of the 576,870 employee jobs within the Service Sector. These female jobs within Services are in turn divided fairly evenly between full-time (48.4%) and part-time (51.6%) workers.

Table 1.2 on page 4 shows Employee Jobs by Industry Section for December 2007. Comparative figures for the previous quarter (September 2007) and for the previous year (December 2006) are also included.

**Table 1.2 N.I. Employee Jobs by Industry Section**

	SIC 03 Sections	December 2006 (Revised)			September 2007 (Revised)			December 2007 (Provisional)		
		Male	Female	Total	Male	Female	Total	Male	Female	Total
Agriculture, Hunting & Forestry & Fishing	A/B	10,730	1,500	12,230	10,500	1,440	11,940	10,500	1,440	11,940
Mining & Quarrying	C	1,840	250	2,080	1,860	250	2,120	1,880	260	2,140
Manufacturing	D	68,530	19,510	88,050	68,880	19,630	88,510	69,020	19,650	88,670
Electricity, Gas & Water supply	E	2,410	370	2,780	2,450	380	2,830	2,490	400	2,890
Construction	F	37,980	4,490	42,470	40,190	4,770	44,960	39,780	4,800	44,580
Wholesale and Retail Trade; Repairs	G	58,530	68,460	127,000	57,130	66,140	123,270	59,490	70,150	129,630
Hotels & Restaurants	H	18,470	24,840	43,310	18,610	24,760	43,370	18,830	24,810	43,630
Transport, Storage & Communication	I	22,080	7,270	29,350	22,890	7,730	30,620	23,260	7,850	31,110
Financial Intermediation	J	6,200	12,100	18,310	6,280	12,220	18,510	6,320	12,270	18,590
Real Estate, Renting & Business Activities	K	38,000	33,780	71,770	39,810	35,380	75,190	40,230	35,630	75,870
Public Administration and Defence	L	31,650	27,930	59,580	31,230	27,380	58,610	31,030	27,650	58,680
Education	M	16,950	53,380	70,320	16,480	52,160	68,640	17,070	54,670	71,740
Health & Social work	N	19,120	95,400	114,510	19,420	96,420	115,840	19,320	95,890	115,210
Other Service Activities	O	15,140	16,730	31,870	15,300	17,360	32,660	15,100	17,310	32,410
Services	G-O	226,140	339,890	566,030	227,150	339,550	566,700	230,650	346,220	576,870
<b>Total</b>	A-O	347,620	366,010	713,630	351,040	366,030	717,070	354,320	372,770	727,090

\* Figures are rounded to the nearest 10 and may not sum due to rounding  
Full-time/Part-time estimates available on request

## 2-Digit Breakdown

# 3

Data are NOT adjusted for seasonality unless otherwise stated

Table 1.3 N.I. Employee Jobs by 2-digit SIC03 Class December 2007

Standard Industrial Classification 2003	Class	Male			Female			All Persons
		Full Time	Part Time	All Males	Full Time	Part Time	All Females	
Agriculture, Hunting & Related Activities	1	2,510	7,580	10,090	440	900	1,340	11,430
Forestry, logging and related activities	2	270	10	280	40	30	60	340
Fishing, operation of fish hatcheries	5	120	20	130	20	10	40	170
Mining of coal and lignite: extraction of peat	10	190	10	200	40	0	50	250
Extraction of crude petroleum and natural gas: service activities incidental to oil & gas extraction excl surveying	11	0	0	0	0	0	0	0
Mining of uranium and thorium ores	12	0	0	0	0	0	0	0
Mining of metal ores	13	0	0	0	0	0	0	0
Other mining and quarrying	14	1,650	30	1,680	160	50	210	1,890
Manufacture of food products; beverages and tobacco	15/16	11,810	650	12,460	4,930	1,200	6,130	18,590
Manufacture of textiles	17	1,180	30	1,210	450	130	580	1,790
Manufacture of wearing apparel	18	290	20	310	620	130	750	1,070
Manufacture of leather and leather products	19	40	0	40	30	10	40	80
Manufacture of wood and wood products	20	3,510	140	3,650	400	170	570	4,210
Manufacture of pulp, paper and paper products	21	1,230	10	1,240	270	40	310	1,550
Publishing, printing and production of recorded media	22	2,390	120	2,510	1,310	400	1,710	4,220
Manufacture of coke, refined petroleum products and nuclear fuels	23	30	0	30	10	0	10	30
Manufacture of chemicals and chemical products	24	2,280	40	2,320	960	90	1,050	3,370
Manufacture of rubber and plastic products	25	5,530	310	5,840	1,010	220	1,230	7,070
Manufacture of other non-metallic mineral products	26	5,160	120	5,270	780	170	950	6,230
Manufacture of basic metals	27	490	20	510	30	20	50	560
Manufacture of fabricated metal products except machinery	28	6,530	160	6,690	550	270	830	7,520
Manufacture of machinery and equipment not elsewhere classified	29	6,120	100	6,220	730	210	930	7,150
Manufacture of office machinery and equipment	30	1,870	10	1,880	360	50	400	2,280
Manufacture of electrical machinery and apparatus not elsewhere classified	31	3,150	30	3,180	610	60	670	3,840
Manufacture of radio, television and communication equipment	32	1,330	10	1,340	770	50	820	2,160
Manufacture of medical, precision and optical instruments, watches and clocks	33	750	30	780	310	80	390	1,170
Manufacture of motor vehicles, trailers and semi-trailers	34	3,180	20	3,200	200	40	240	3,440
Manufacture of other transport equipment	35	5,480	10	5,490	600	50	650	6,140
Manufacture of furniture; manufacture not elsewhere classified	36	3,670	130	3,800	810	200	1,010	4,810
Recycling	37	1,010	30	1,050	280	50	330	1,380
Electricity, gas, steam and hot water supply	40	1,620	0	1,620	360	40	390	2,010
Collection, purification and distribution of water	41	870	0	870	0	0	0	880
Construction	45	38,170	1,610	39,780	3,090	1,710	4,800	44,580
Sale, maintenance and repair of motor vehicles; retail of automotive fuel	50	10,100	1,750	11,850	2,480	2,850	5,330	17,190
Wholesale trade and commission trade	51	16,210	1,040	17,250	4,650	1,900	6,540	23,790
Retail trade	52	15,490	14,890	30,380	17,600	40,660	58,270	88,650
Hotels and restaurants	55	8,890	9,940	18,830	8,190	16,620	24,810	43,630
Land transport, transport via pipelines	60	10,560	1,410	11,970	1,170	1,070	2,240	14,210
Water transport	61	400	10	410	180	30	210	620
Air transport	62	240	20	260	290	120	400	660

Standard Industrial Classification 2003	Class	Male			Female			All Persons
		Full Time	Part Time	All Males	Full Time	Part Time	All Females	
Supporting and auxiliary transport activities; travel agents	63	3,120	330	3,450	1,700	630	2,330	5,770
Post and telecommunications	64	5,710	1,470	7,180	1,420	1,250	2,670	9,850
Financial intermediation except insurance and pension funding	65	3,870	210	4,080	5,500	2,740	8,230	12,310
Insurance and pension funding, except compulsory social security	66	910	60	970	1,220	350	1,570	2,550
Activities auxiliary to financial intermediation	67	1,190	80	1,270	1,790	670	2,470	3,730
Real estate activities <sup>1</sup>	70	3,900	410	4,310	2,890	1,100	3,990	8,290
Renting of equipment and machinery without operator	71	1,450	250	1,700	370	350	720	2,420
Computer and related activities	72	5,450	140	5,580	1,910	330	2,240	7,820
Research and development	73	1,070	30	1,100	550	130	670	1,780
Other business activities	74	22,090	5,450	27,540	15,710	12,300	28,010	55,550
Public administration and defence; compulsory social security <sup>1</sup>	75	28,510	2,510	31,030	21,010	6,640	27,650	58,680
Education	80	12,860	4,210	17,070	23,890	30,790	54,670	71,740
Health and social work	85	14,880	4,440	19,320	46,940	48,940	95,890	115,210
Sewage and refuse disposal, sanitation and similar activities	90	2,530	80	2,610	370	190	560	3,170
Activities of membership organisations not elsewhere classified	91	2,250	1,490	3,750	1,720	2,900	4,620	8,370
Recreational, cultural and sporting activities	92	4,890	3,010	7,900	3,430	4,220	7,650	15,550
Other service activities	93	630	220	840	2,440	2,030	4,480	5,320
<b>Total</b>		<b>289,640</b>	<b>64,680</b>	<b>354,320</b>	<b>187,590</b>	<b>185,190</b>	<b>372,770</b>	<b>727,090</b>

\* Figures may not sum due to rounding

<sup>1</sup> See Notes to Editors, No.4

**Table 1.4 N.I. Tourism and Leisure Employee Jobs\* December 2007**

	SIC	Male	Female	Total
Hotels	551	4,460	4,970	9,430
Camping Sites and Other Provision of Short-Stay Accommodation	552	230	370	600
Restaurants	553	7,240	11,840	19,080
Bars	554	5,760	4,800	10,560
Activities of Travel Agencies and Tour Operators; Tourist Assistance Activities not Elsewhere Classified	633	270	1,120	1,390
Libraries, Archives, Museums and Other Cultural Activities	925	740	1,530	2,270
Sporting Activities	926	4,050	3,220	7,270
Other Recreational Activities	927	1,410	1,410	2,810
<b>Total</b>		<b>24,170</b>	<b>29,250</b>	<b>53,420</b>

\* Figures are rounded to the nearest 10 and may not sum due to rounding

# Public Sector Data

# 4

**Data are NOT adjusted for seasonality unless otherwise stated**

Table 1.5 N.I. Public Sector Employee Jobs December 2007

	Male	Female	Total
<b>NI CENTRAL GOVERNMENT</b>	<b>39,133</b>	<b>77,210</b>	<b>116,343</b>
Office of the First and Deputy First Minister	180	238	418
Department of Agriculture and Rural Development (DARD)	2,494	1,498	3,992
Department for Culture, Arts and Leisure (DCAL)	252	175	427
Department of Enterprise, Trade and Investment (DETI)	328	366	694
Department of Education (DE)	272	406	678
Department of Environment (DOE)	1,483	1,413	2,896
Department of Finance and Personnel (DFP)	1,740	1,618	3,358
Department for Employment and Learning (DEL)	605	1,230	1,835
Department of Regional Development (DRD)	1,993	658	2,651
Department for Social Development (DSD)	3,011	4,838	7,849
Department of Health, Social Services and Public Safety (DHSSPS)	483	456	939
<b>Total of 11 Government Departments (Northern Ireland Civil Service)</b>	<b>12,841</b>	<b>12,896</b>	<b>25,737</b>
Fire Service	1,951	200	2,151
NI Audit Office	76	66	142
Northern Ireland Assembly	237	144	381
Northern Ireland Office	802	1,335	2,137
Parliamentary Commissioner for Administration & Complaints	9	13	22
Prison Service	1,517	372	1,889
Police Service of Northern Ireland	7,887	3,742	11,629
NHS Trusts	13,359	58,062	71,421
British Broadcasting Corporation (BBC)	431	353	784
Assets Recovery Agency	23	27	50
<b>BODIES UNDER AEGIS OF NI CENTRAL GOVERNMENT</b>	<b>20,431</b>	<b>57,356</b>	<b>77,787</b>
Office of the First and Deputy First Minister	75	121	196
Department of Agriculture and Rural Development (DARD)	27	21	48
Department for Culture, Arts and Leisure (DCAL)	359	401	760
Department of Enterprise, Trade and Investment (DETI)	361	509	870
Department of Education (DE)	194	294	488
Department of Finance and Personnel (DFP)	19	23	42
Department for Employment and Learning (DEL)	433	399	832
Department of Regional Development (DRD)	1,432	241	1,673
Department of Health & Social Services and Public Safety (DHSSPS)	665	1,103	1,768
Department for Social Development (DSD)	1,823	1,733	3,556
Northern Ireland Office	326	480	806
Education & Library Boards (Non-Teaching)	7,152	32,886	40,038
Teaching Staff in All Schools	7,565	19,145	26,710
<b>UK CENTRAL GOVERNMENT</b>	<b>3,103</b>	<b>3,269</b>	<b>6,372</b>
<b>LOCAL GOVERNMENT (District Councils)</b>	<b>6,747</b>	<b>4,810</b>	<b>11,557</b>
<b>PUBLIC CORPORATIONS</b>	<b>7,848</b>	<b>1,365</b>	<b>9,213</b>
NI Based	3,980	594	4,574
UK Based	3,868	771	4,639
<b>Total</b>	<b>77,262</b>	<b>144,010</b>	<b>221,272</b>

See Notes to Editors, No.4.

# Unadjusted and Seasonally Adjusted Series

# 5

**Data are NOT adjusted for seasonality unless otherwise stated**

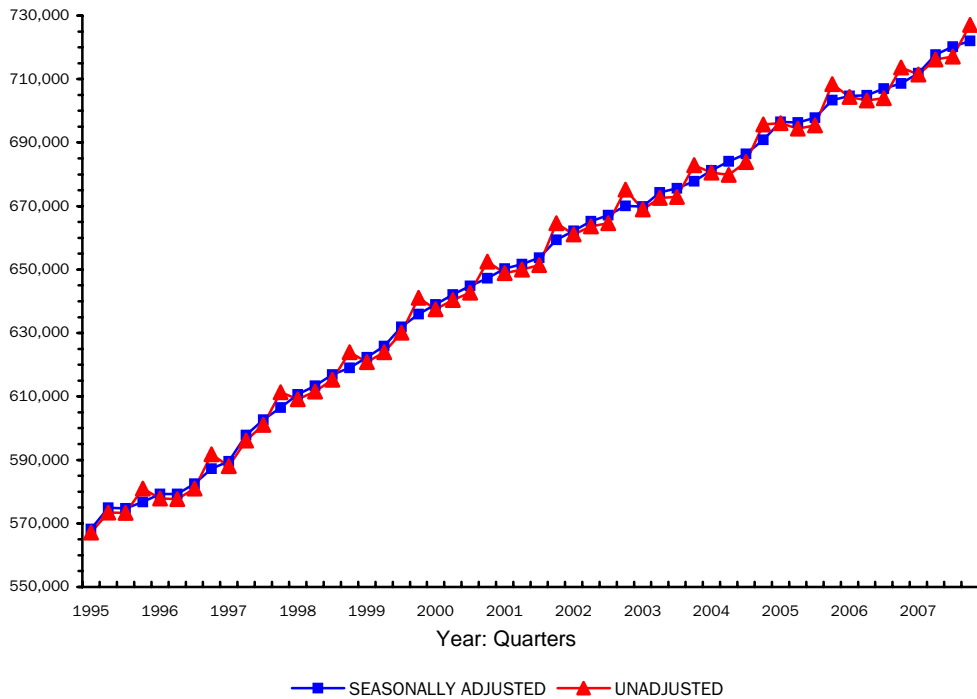
**Table 1.6 N.I. Employee Jobs by Broad Industry Sector**  
**Unadjusted & Seasonally Adjusted 1994 – 2007**

	Unadjusted					Seasonally Adjusted					
	Manuf.	Const.	Serv.	Other	All	Manuf.	Const.	Serv.	Other	All	
1994	Mar	99,800	23,940	405,940	24,440	554,120	100,270	24,000	406,540	24,440	555,260
	Jun	100,730	23,790	408,600	23,820	556,940	101,120	23,810	409,580	23,820	558,320
	Sep	102,140	24,130	409,880	23,730	559,880	101,770	23,910	411,640	23,730	561,060
	Dec	102,610	23,990	421,320	23,610	571,530	102,140	24,120	417,840	23,610	567,710
1995	Mar	101,810	24,000	417,770	23,530	567,110	102,290	24,090	418,400	23,530	568,310
	Jun	103,590	23,850	421,980	24,000	573,420	103,930	23,850	423,110	24,000	574,890
	Sep	103,970	23,740	421,690	23,940	573,340	103,600	23,520	423,650	23,940	574,710
	Dec	104,340	23,450	429,480	23,730	581,000	103,890	23,540	425,600	23,730	576,750
1996	Mar	104,280	23,240	426,730	23,630	577,880	104,790	23,380	427,420	23,630	579,230
	Jun	103,880	22,830	427,930	22,990	577,640	104,180	22,830	429,220	22,990	579,220
	Sep	104,880	23,030	430,180	22,920	581,020	104,510	22,820	432,260	22,920	582,520
	Dec	106,110	23,210	439,540	22,960	591,820	105,660	23,250	435,330	22,960	587,200
1997	Mar	105,930	22,980	436,320	22,830	588,050	106,450	23,140	437,100	22,830	589,510
	Jun	107,300	27,490	438,570	22,750	596,100	107,610	27,510	439,970	22,750	597,840
	Sep	107,920	28,140	442,300	22,740	601,100	107,550	27,930	444,420	22,740	602,630
	Dec	107,590	28,760	452,860	22,110	611,330	107,140	28,750	448,460	22,110	606,470
1998	Mar	106,580	29,160	451,350	22,020	609,110	107,090	29,330	452,190	22,020	610,620
	Jun	106,680	29,600	453,640	21,590	611,510	106,980	29,670	455,120	21,590	613,360
	Sep	107,840	30,050	455,890	21,490	615,260	107,490	29,850	458,020	21,490	616,860
	Dec	107,270	30,350	464,960	21,400	623,980	106,830	30,290	460,460	21,400	618,980
1999	Mar	105,310	30,560	463,640	21,360	620,870	105,790	30,700	464,510	21,360	622,360
	Jun	105,170	31,290	466,650	20,890	624,000	105,460	31,410	468,100	20,890	625,850
	Sep	105,810	33,100	470,420	20,800	630,130	105,510	32,930	472,680	20,800	631,910
	Dec	105,750	33,930	480,410	20,980	641,060	105,300	33,840	475,800	20,980	635,920
2000	Mar	104,550	34,090	477,900	20,930	637,470	105,000	34,210	478,810	20,930	638,950
	Jun	103,590	34,470	481,200	21,120	640,380	103,850	34,610	482,540	21,120	642,120
	Sep	103,870	35,240	482,620	21,030	642,750	103,630	35,110	485,070	21,030	644,830
	Dec	104,080	35,500	492,060	20,870	652,500	103,670	35,380	487,350	20,870	647,270
2001	Mar	102,790	35,790	489,710	20,610	648,900	103,160	35,880	490,590	20,610	650,250
	Jun	101,710	35,810	492,860	19,650	650,030	101,950	35,950	494,140	19,650	651,690
	Sep	100,190	36,090	495,520	19,630	651,420	99,990	35,990	498,160	19,630	653,770
	Dec	99,120	36,680	509,260	19,590	664,660	98,760	36,570	504,480	19,590	659,400
2002	Mar	97,740	36,560	507,210	19,520	661,040	98,040	36,630	508,000	19,520	662,200
	Jun	97,440	36,300	510,790	19,090	663,630	97,680	36,410	512,070	19,090	665,260
	Sep	96,570	36,280	512,680	19,070	664,600	96,390	36,220	515,480	19,070	667,160
	Dec	95,540	35,870	524,720	19,120	675,250	95,240	35,760	519,910	19,120	670,040

	Unadjusted					Seasonally Adjusted					
	Manuf.	Const.	Serv.	Other	All	Manuf.	Const.	Serv.	Other	All	
2003	Mar	93,520	35,400	520,890	19,100	668,930	93,750	35,460	521,520	19,100	669,840
	Jun	91,890	35,930	525,270	19,510	672,610	92,140	36,020	526,620	19,510	674,290
	Sep	91,880	36,010	525,530	19,480	672,910	91,690	35,970	528,430	19,480	675,580
	Dec	90,850	36,320	536,120	19,550	682,850	90,660	36,220	531,410	19,550	677,850
2004	Mar	90,000	36,200	534,800	19,530	680,530	90,180	36,330	535,180	19,530	681,220
	Jun	88,990	33,820	535,530	21,550	679,900	89,310	36,290	536,980	21,550	684,130
	Sep	89,210	36,320	539,250	19,150	683,930	88,880	36,250	542,080	19,150	686,370
	Dec	88,610	36,590	551,010	19,450	695,650	88,480	36,500	546,460	19,450	690,880
2005	Mar	88,110	36,820	552,050	19,120	696,090	88,230	36,970	552,220	19,120	696,540
	Jun	87,220	37,800	551,610	17,730	694,360	87,560	37,830	553,170	17,730	696,290
	Sep	87,700	38,340	551,620	17,760	695,410	87,340	38,240	554,420	17,760	697,770
	Dec	(R) 87,570	40,170	562,890	17,720	708,360	87,390	40,090	558,140	17,720	703,340
2006	Mar	(R) 87,490	40,930	558,170	17,740	704,330	87,630	41,090	558,170	17,740	704,630
	Jun	(R) 87,400	41,540	557,280	17,040	703,260	87,710	41,470	558,700	17,040	704,920
	Sep	(R) 88,100	41,970	556,800	17,060	703,930	87,830	41,950	560,110	17,060	706,950
	Dec	(R) 88,050	42,470	566,030	17,090	713,630	87,870	42,390	561,310	17,090	708,660
2007	Mar	(R) 87,500	42,880	563,910	17,140	711,430	87,650	43,070	563,950	17,140	711,800
	Jun	(R) 88,320	44,260	566,720	16,890	716,190	88,600	44,180	568,030	16,890	717,710
	Sep	(R) 88,510	44,960	566,700	16,900	717,070	88,260	44,930	570,080	16,900	720,170
	Dec	(P) 88,670	44,580	576,870	16,970	727,090	88,480	44,510	572,110	16,970	722,070

Fig 1.4 N.I. Employee Jobs 1995-2007

Unadjusted & Seasonally Adjusted



# Special Feature

## 6

**Data are NOT adjusted for seasonality unless otherwise stated**

### Focus on Manufacturing Employee Jobs

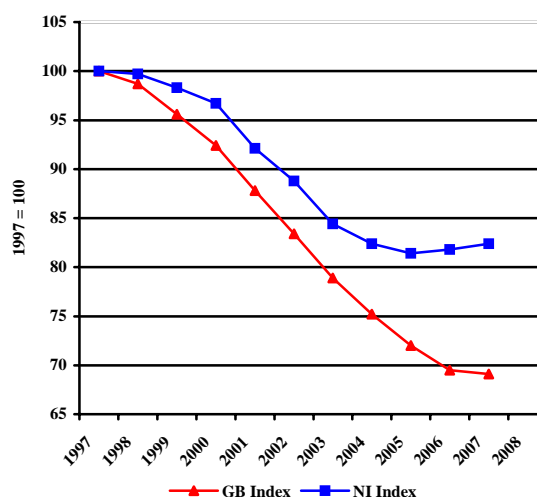
Figure 1.5 shows Northern Ireland and Great Britain's manufacturing jobs, indexed to 1997. It illustrates how the level of jobs in the manufacturing sector in both NI and GB has followed a broadly similar trend over the past 10 years.

NI manufacturing jobs recorded only a small fall between 1997 and 1999, with the figure for 1999 at 98% of the 1997 figure. However, from 2000 onwards the decline in NI manufacturing jobs has been more marked and, in particular, the substantial falls between 2000 and 2005 have resulted in the 2007 figure being only 82% of the 1997 level. Manufacturing employee jobs in NI have been fairly stable between 2005 and 2007.

Manufacturing jobs in GB remained relatively constant between 1997 and 1998. Since then GB manufacturing jobs have been in sharp decline and the 2007 estimate stands at only 69% of the 1997 level.

Table 1.7 below highlights the changes that have occurred in the structure of Northern Ireland manufacturing jobs between 1997-2002 and 2002-2007.

**Fig 1.5 Manufacturing Jobs for NI & GB Indexed (December of Each Year)**



**Table 1.7 Changes in the structure of Manufacturing Jobs (NI)**

	Manufacturing Subsection	Dec-97	Dec-02	Dec-07	Change 1997-2002	Change 2002-2007
DA	Food Products; Beverages & Tobacco	19,750	18,730	18,590	-1,020	-140
DB	Textiles & Textile Products	23,240	11,030	2,860	-12,210	-8170
DC	Leather & Leather Products	420	260	80	-160	-180
DD	Wood & Wood Products	3,010	2,990	4,210	-20	1220
DE	Pulp & Paper; Publishing & Printing	6,570	6,210	5,770	-360	-440
DF	Coke, Petroleum Prods & Nuclear Fuel	50	60	30	20	-30
DG	Chemical Products & Man-Made Fibres	3,560	3,370	3,370	-190	0
DH	Rubber & Plastic Products	6,880	7,120	7,070	240	-50
DI	Other Non-Metallic Mineral Products	4,690	5,520	6,230	830	700
DJ	Basic Metals & Fabricated Metal Prods	5,640	6,860	8,080	1,220	1220
DK	Machinery & Equipment, (NEC)	6,990	6,530	7,150	-470	630
DL	Electrical & Optical Equipment	11,100	10,470	9,450	-630	-1010
DM	Transport Equipment	11,790	12,090	9,580	300	-2520
DN	Manuf Not Elsewhere Classified (NEC)	3,910	4,300	6,190	390	1890
<b>D</b>	<b>All Manufacturing</b>	<b>107,590</b>	<b>95,540</b>	<b>88,670</b>	<b>-12,050</b>	<b>-6870</b>

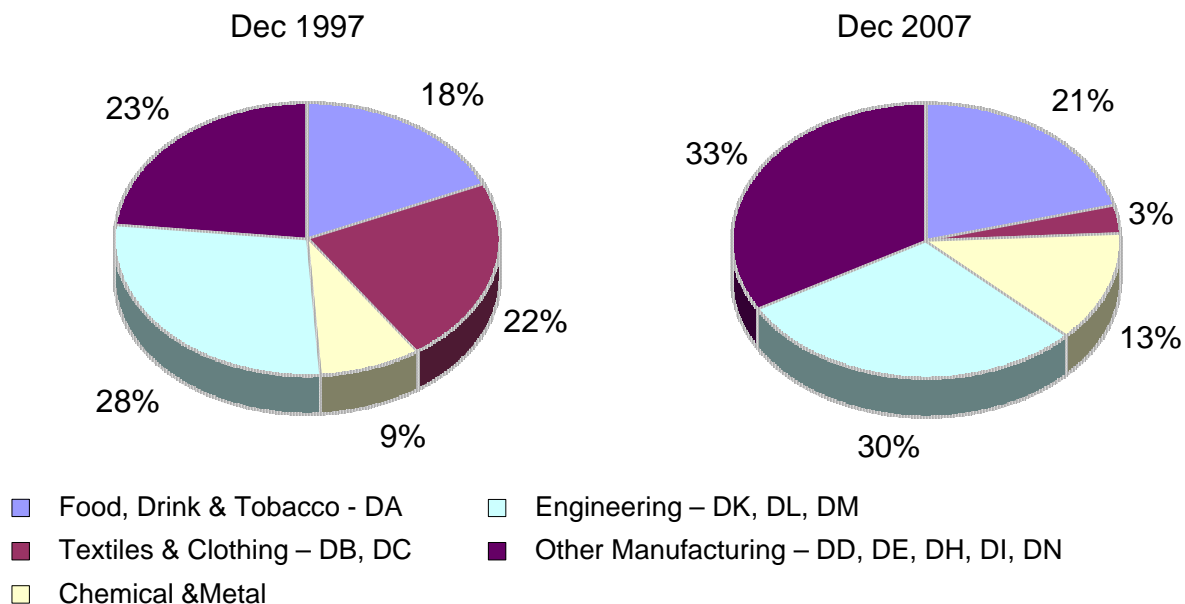
During 1997-2002 manufacturing jobs decreased by 12,050, with 8 of the 14 manufacturing subsections recording a decrease. The largest decrease occurred in the Manufacture of Textiles and Textile Products, which recorded 12,210 fewer jobs. Other significant decreases were recorded in the Manufacture of Food Products; Beverages and Tobacco (-1,020), the Manufacture of Electrical and Optical Equipment (-630 jobs), the Manufacture of Machinery and Equipment not elsewhere classified (-470), and in Manufacturing of Paper and Pulp; Publishing and Printing (-360 jobs). However, these decreases were partially offset by increases in the Manufacture of Basic Metals and Fabricated Metal Products (+1,220) and in Manufacture of Other Non-Metallic Mineral Products (+830).

During 2002-2007 the number of manufacturing jobs fell by 6,870 (-7.2%), with large falls occurring in three manufacturing subsections. The Manufacture of Textiles and Textile Products recorded job losses amounting to 8,170, while the number of employee jobs in the Manufacture of Transport Equipment fell by 2,520. There were 1,010 fewer jobs recorded in the Manufacture of Electrical and Optical Equipment.

Figure 1.6 below shows the structure of manufacturing jobs in Northern Ireland by broad manufacturing group at December 1997 and December 2007. It illustrates how the decline in the manufacture of textiles and clothing has impacted on the structure of Northern Ireland manufacturing jobs.

In 1997 around one in every five manufacturing jobs were located in the Textiles and Clothing industry but by 2007 this had fallen to one in every thirty. The Other Manufacturing sector accounts for most jobs within manufacturing. It accounted for 23% of manufacturing jobs in 1997 and by 2007 this figure has risen to 33%.

**Fig 1.6 Manufacturing in Northern Ireland by Broad Manufacturing Group**



# Notes To Editors

## 7

### **Note 1**

Estimates of the number of employee jobs are obtained from the Quarterly Employment Survey (QES). The QES covers all public sector bodies, all private sector firms with 25 or more employees and a sample of the remainder. The sample size is such that estimates of total employee jobs should be accurate to within +/- 1% of the Census of Employment total. The survey collects information on numbers of persons in full-time and part-time employment. It should be noted that the survey counts the number of jobs rather than the number of persons with jobs. For example, a person holding both a full-time job and a part-time job, or someone with two part-time jobs, will be counted twice.

The QES is a voluntary survey of employers in Northern Ireland and results from it are collated into industry classes using the 2003 Standard Industrial Classification (SIC03). As a result, there is no breach of confidentiality.

### **Note 2**

It is normal practice for Quarterly Employment Survey estimates to be revised, based on employer returns. The revisions are made to each quarter, back as far as the latest published Census of Employment estimate (currently September 2005).

### **Note 3**

The quarterly survey covers all Industrial Sections apart from Agriculture. Overall employment (i.e. employees and the self-employed) estimates for the agricultural sector are provided, on an annual basis, from the Department of Agriculture and Rural Development's (DARD) Farm Census. Self-employed agriculture workers are defined as including full-time farmers and partners on all agricultural businesses. Agriculture employees include all workers on agricultural businesses other than (a) part-time farmers and partners and (b) farmers' spouses. They include full-time, part-time and casual workers, both paid and unpaid.

### **Note 4**

Public sector jobs comprise Central Government (including Bodies under the aegis of Central Government), Local Government and Public Corporations. An announcement in April 1993 transferred National Health Service Trusts from 'Bodies under the aegis of Central Government' to 'Public Corporations'. A subsequent announcement by the Public Sector Classification Committee (PSCC) in July 2003 stated that all NHS Trusts should retrospectively be reclassified to Central Government. In addition, following advice from PSCC, Northern Ireland Housing Executive employees were reclassified from SIC 75 to SIC 70 in December 2006. This change applies to each quarter from Quarter 1 2004 onwards. From 1<sup>st</sup> April 2007, The Water Service became a Government owned company known as "Northern Ireland Water". As a result its employees have been transferred from "NI Central Government" to "Bodies under the Aegis of NI Central Government".

### **Note 5**

A seasonally adjusted employment series provides a better indication of underlying trends in employment. This series is available on a consistent basis from June 1978 onwards and figures by main industrial sector from 1994 onwards are shown in Table 1.6.

### **Note 6**

Information on employee jobs at a sub Northern Ireland level (e.g. District Council Area (DCA), Parliamentary Constituency Area (PCA), Ward Level) and at the 5-digit SIC03 level are available from the Northern Ireland Census of Employment. Details of the Census of Employment results are available from Statistics Research Branch Tel: (028) 9052 9379 or on our Internet website [www.statistics.detini.gov.uk](http://www.statistics.detini.gov.uk)