



Northern Ireland

Quarterly Employment Survey (QES) Supplement

March 2011 Published 15/06/2011

IMPORTANT NOTICE: Users of QES data should be aware that the sample coverage used to derive employee jobs estimates in NI has been extended. This has resulted in a discontinuity in the QES employee jobs series from the reference period Q3 2009 onwards.

For more details on these changes and their impact please see <http://www.detini.gov.uk/deti-stats-index/stats-surveys/stats-qes/stats-qes-discontinuity-notice.htm>

- The QES is a business survey that has been carried out in Northern Ireland since 1978. The QES has a sample size of approximately 5,500 and covers all employers with at least 25 employees, all public sector employers and a representative sample of smaller firms.
- The March 2011 seasonally adjusted employee jobs figure stands at 703,860, an increase of 0.1% (or 590 jobs) from the revised December 2010 estimate.
- Over the quarter seasonally adjusted employee jobs increased in the Service Sector by 0.2% (870 jobs). The Manufacturing sector decreased by 0.2% (160 jobs), while the Construction sector also decreased by 0.2% (60 jobs). Other Industries decreased by 0.3% (60 jobs) over the quarter.
- The March 2011 seasonally unadjusted figure stands at 702,870, a decrease of 0.8% (5,520 jobs) since December 2010 and a decrease of 1.0% (6,880 jobs) in the past year.
- Over the year, March 2010 to March 2011, the unadjusted employee jobs figure for Construction decreased by 9.5% (3,500 jobs), while employee jobs in the Service Sector decreased by 0.7% (4,210 jobs). Manufacturing employee jobs increased by 1.6% (1,200 jobs) over the year.
- The net quarterly decrease in employee jobs (5,520) is comprised of a decrease in the number of full-time employee jobs (-1,270) and also a decrease in the number of part-time employee jobs (-4,250).
- The March 2011 seasonally adjusted Public Sector employee jobs figure stands at 222,940.
- This represents a decrease of 0.2% (530 jobs) since December 2010 and a decrease of 1.2% (2,620 jobs) over the past year.



A NATIONAL STATISTICS PUBLICATION

National Statistics are produced to high professional standards set out in the National Statistics Code of Practice. They undergo regular quality assurance reviews to ensure that they meet customer needs. They are produced free from any political interference.

For general enquiries about National Statistics, contact
The National Statistics Public Enquiry Service on **0845 601 3034**
minicom: 01633 812399
E-mail: info@statistics.gov.uk
Fax: 01633 652747
Letters: Room 1015, Government Buildings, Cardiff Road, Newport,
Gwent, South Wales NP10 8XG

You can also find National Statistics on the Internet – go to
www.statistics.gov.uk

Northern Ireland Statistics &
Research Agency

Northern Ireland Quarterly Employment Survey (QES) Supplement

March 2011

Crown Copyright

From the 1st April 2011, the responsibility for the collection of data and production of official labour market and economic statistics transferred from the Department of Enterprise, Trade and Investment to the Northern Ireland Statistics and Research Agency (DFP). This transfer mirrored the position in Great Britain where most business surveys and labour market data collection and statistical production have been transferred from the departments with policy responsibilities to the Office for National Statistics (ONS). However, it is important to note that there are no planned changes to the production of economic and labour market statistical publications and outputs as a result of the transfer.

For further information please contact:

Gerard Colgan
Economic and Labour Market Statistics Branch, Room 110,
Netherleigh, Massey Avenue, Belfast BT4 2JP

Tel: (028) 9052 9523
Fax: (028) 9052 9658
Textphone: (028) 9052 9304
Email: gerard.colgan@dfpni.gov.uk

Contents

1

Executive Summary
Page 1

2

NI Employee Jobs
Page 2 - 4

3

2-Digit Breakdown
Pages 5 - 7

4

Unadjusted & Seasonally
Adjusted Series (By Sector)
Page 8 - 9

5

Unadjusted & Seasonally Adjusted Series
(Public / Private)
Page 10 - 11

6

Public Sector Data (By Section Department)
Page 12

7

Special Feature
Page 13

8

Notes to Editors
Page 14

Executive Summary

1

Introduction

This bulletin presents data from the Northern Ireland Quarterly Employment Survey (QES), which is conducted by the Economic and Labour Market Statistics Branch of the Northern Ireland Statistics and Research Agency (NISRA).

The QES provides short-term employee jobs estimates for Northern Ireland, which are then used by the Office for National Statistics (ONS) to feed into the calculation of the quarterly workforce jobs estimates for the United Kingdom as a whole.

The QES covers all public sector bodies, all private sector firms with 25 or more employees and a sample of the remainder. The sample size is such that estimates of total employee jobs should be accurate to within +/- 1% of the Census of Employment total. The survey collects information on the number of males/females in full-time and part-time employment by business activity. The results are then collated into industry classes using the 2007 Standard Industrial Classification (SIC07).

It should be noted that the survey counts the number of jobs rather than the number of persons with jobs. For example, a person holding both a full-time job and part-time job, or someone with two part-time jobs, will be counted twice.

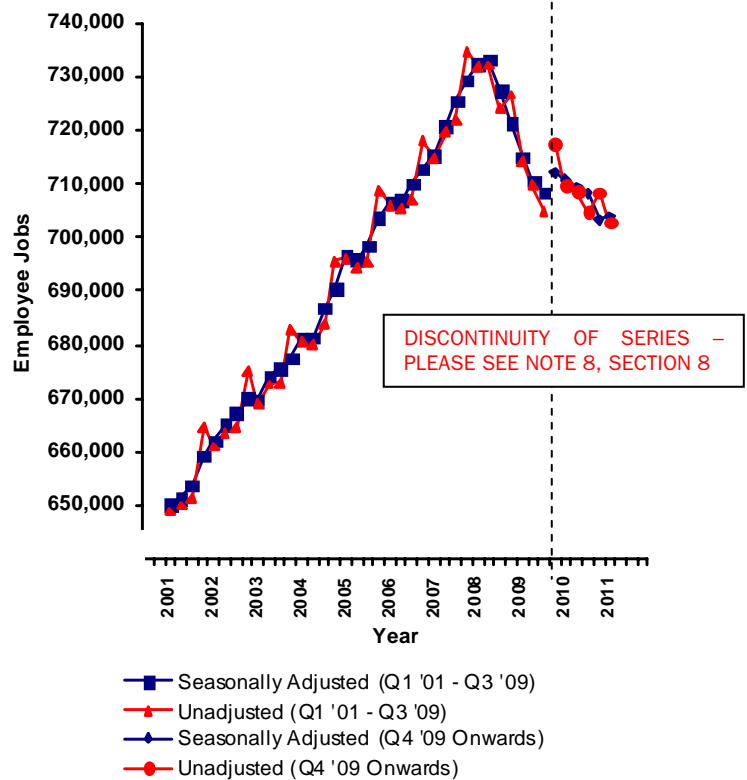
Seasonally Adjusted

The March 2011 seasonally adjusted employee jobs figure stands at 703,860.

This represents a seasonally adjusted increase of 0.1% (or 590 jobs) from the revised December 2010 estimate of 703,280.

Over the quarter seasonally adjusted employee jobs increased in the Service Sector by 0.2% (870 jobs). Manufacturing employee jobs decreased over the quarter by 0.2% (160 jobs), while the Construction sector* also decreased by 0.2% (60 jobs). Other Industries* decreased over the quarter by 0.3% (60 jobs).

Fig 1.1 Employee Jobs Seasonally Adjusted / Unadjusted 2001 - 2011



Unadjusted

The March 2011 seasonally unadjusted figure stands at 702,870.

This represents a decrease of 0.8% (5,520 jobs) since December 2010 and a decrease of 1.0% (6,880 jobs) in the past year.

Over the year, March 2010 to March 2011, the unadjusted employee jobs figure for Construction decreased by 9.5% (3,500 jobs), while employee jobs in the Service Sector decreased by 0.7% (4,210 jobs). Manufacturing employee jobs increased by 1.6% (1,200 jobs) over the year.

Date of Next Publication

Quarterly Employment Survey results for Quarter 2 2011 will be published on Wednesday 14th September 2011.

*Please see Note 5

NI Employee Jobs

2

Data are NOT adjusted for seasonality unless otherwise stated

Employee Jobs from the Quarterly Employment Survey

Table 1.1 below provides a summary of the latest results from the Quarterly Employment Survey. It shows that in March 2011 there were an estimated 702,870 employee jobs in Northern Ireland.

Table 1.1 NI Employee Jobs, Full-time/Part-time Split, March 2011

	Male		Female		Total	% change in total	
	Full Time	Part Time	Full Time	Part Time		Since last quarter	Since last year
Manufacturing	56,360	1,780	12,810	3,230	74,180	-0.7%	1.6%
Construction	28,060	1,200	2,690	1,580	33,530	-0.2%	-9.5%
Services	175,510	55,190	165,480	179,550	575,730	-0.8%	-0.7%
Other ¹	9,410	7,290	1,420	1,320	19,430	-0.3%	-1.8%
Total	269,330	65,460	182,400	185,680	702,870	-0.8%	-1.0%

¹ Covers Industry Sections A, B, C and E

* Figures are rounded to the nearest 10 and may not sum due to rounding

Fig 1.2 shows the Male/Female, Full-time/Part-time breakdown of employee jobs in Northern Ireland, as at March 2011. Female employee jobs account for just over half of all employee jobs in NI (368,070 female employee jobs, compared to 334,800 males). There is, however, a significant difference in the working patterns of male and female employees. Just over half (50.4%) of female employee jobs are part-time, whereas only 19.6% of male employees work on a part-time basis.

Fig 1.2 Composition of Employee Jobs, March 2011

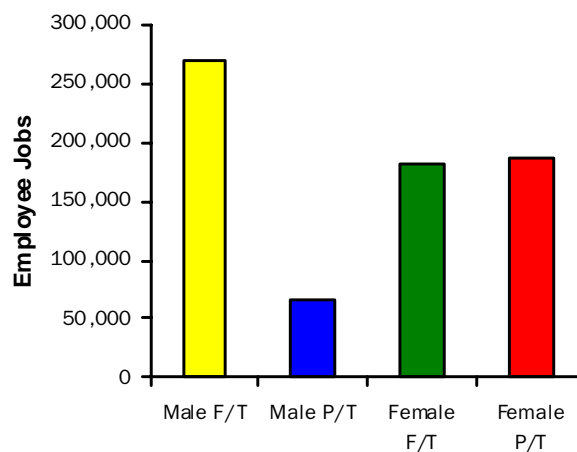


Fig 1.3 shows the annual and quarterly changes in employee jobs. Between December 2010 and March 2011 the number of employee jobs in NI fell by 0.8% (-5,520 jobs). This consisted of decreases in the Service Sector (-4,900), in the Manufacturing Sector (-500) and also in the Construction Sector (-60).

Between March 2010 and March 2011 the number of employee jobs decreased by 1.0% (-6,880). This consisted of decreases in Construction (-3,500) and Service Sector (-4,210) and also in Other Industries (-360). The Manufacturing Sector increased (1,200) over the year.

Fig 1.3 Annual and Quarterly Changes in Employee Jobs

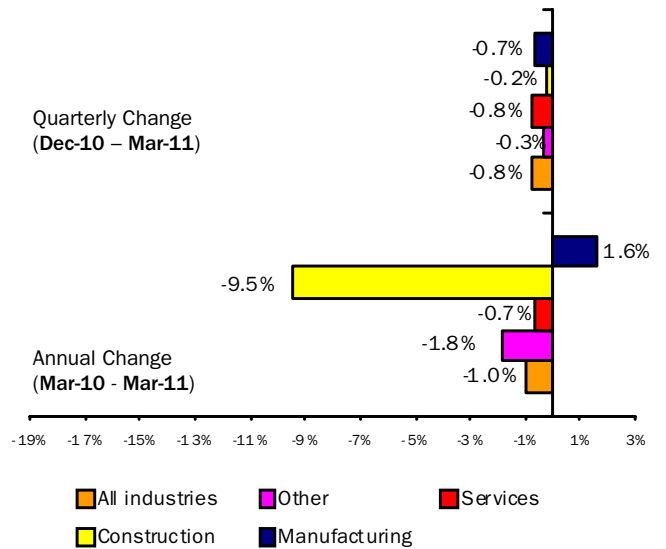


FIG 1.4 Employee Jobs, Male/Female, Full-Time/Part-Time Split, March 2011

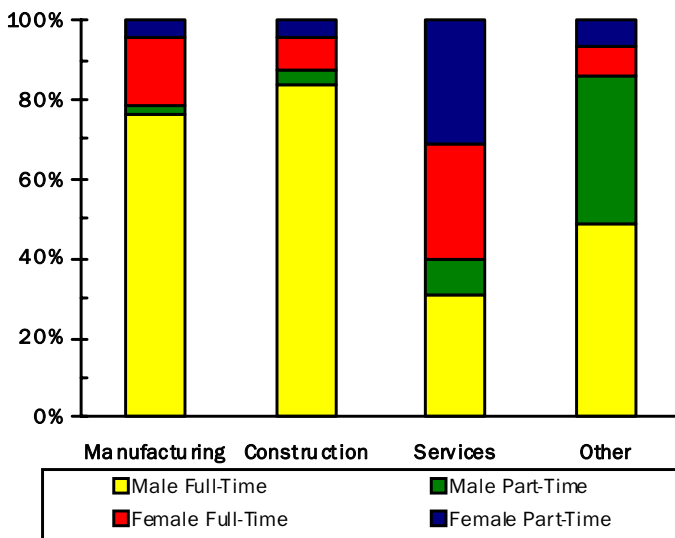


Fig 1.4 shows the male/female, full-time/part-time split for each broad industry sector within Northern Ireland. It highlights the large proportion of employee jobs in the Manufacturing and Construction Sectors that are occupied by male full-time employees (76.0% for Manufacturing, 83.7% for Construction). In contrast, females occupy 59.9% of the 575,730 employee jobs within the Service Sector. These female jobs within Services are in turn divided fairly evenly between full-time (48.0%) and part-time (52.0%) workers.

Table 1.2 on page 4 shows Employee Jobs by Industry Section for March 2011. Comparative figures for the previous quarter (December 2010) and for the previous year (March 2010) are also included.

Table 1.2 N.I. Employee Jobs by Industry Section

	SIC 07 Sections	March 2010 (Revised)			December 2010 (Revised)			March 2011 (Provisional)		
		Male	Female	Total	Male	Female	Total	Male	Female	Total
Agriculture, Forestry and Fishing	A	10,620	1,630	12,250	10,230	1,610	11,840	10,220	1,600	11,830
Mining and quarrying	B	1,510	200	1,710	1,430	180	1,610	1,420	180	1,600
Manufacturing	C	56,950	16,030	72,970	58,330	16,350	74,680	58,140	16,030	74,180
Electricity, gas, steam and air conditioning supply	D	970	410	1,380	1,000	440	1,440	960	440	1,400
Water supply, sewerage, waste management and remediation activities	E	3,980	470	4,450	4,100	510	4,600	4,110	510	4,610
Construction	F	32,370	4,670	37,040	29,280	4,310	33,590	29,260	4,270	33,530
Wholesale and retail trade; repair of motor vehicles and motorcycles	G	59,670	69,480	129,150	60,320	70,510	130,830	58,200	67,720	125,920
Transportation and storage	H	19,820	5,270	25,090	20,460	5,560	26,020	20,100	5,520	25,620
Accommodation and food service activities	I	18,980	24,310	43,290	18,910	24,210	43,130	18,400	23,610	42,020
Information and communication	J	9,930	4,850	14,780	10,370	4,880	15,250	10,440	4,910	15,350
Financial and insurance activities	K	7,050	12,190	19,240	7,130	12,130	19,270	7,170	12,080	19,250
Real estate activities	L	3,180	3,850	7,030	3,140	3,820	6,960	3,160	3,840	7,000
Professional, scientific and technical activities	M	11,180	13,310	24,490	10,790	12,970	23,770	10,790	12,990	23,780
Administrative and support service activities	N	22,130	17,700	39,840	23,740	17,600	41,340	24,360	17,990	42,350
Public administration and defence; compulsory social security	O	31,000	28,330	59,340	29,990	27,680	57,670	30,020	27,810	57,830
Education	P	16,970	56,910	73,880	16,820	56,000	72,820	16,680	55,920	72,590
Human health and social work activities	Q	19,620	96,040	115,660	19,290	96,260	115,550	19,320	96,420	115,730
Arts, entertainment and recreation	R	6,850	6,710	13,560	7,040	6,830	13,870	7,190	6,970	14,150
Other service activities	S	5,040	9,560	14,590	4,890	9,260	14,160	4,870	9,260	14,120
TOTAL	A-S	337,820	371,930	709,750	337,280	371,110	708,390	334,800	368,070	702,870

* Figures are rounded to the nearest 10 and may not sum due to rounding
Full-time/Part-time estimates available on request

2-Digit Breakdown

3

Data are NOT adjusted for seasonality unless otherwise stated

Table 1.3 N.I. Employee Jobs by 2-digit SIC07 Class March 2011

Standard Industrial Classification 2007	Class	Male			Female			All Persons
		Full Time	Part Time	All Males	Full Time	Part Time	All Females	
Crop and animal production, hunting and related service activities	01	2,770	7,090	9,870	500	1,030	1,530	11,400
Forestry and logging	02	220	10	230	20	20	30	270
Fishing and aquaculture	03	100	30	120	10	30	40	160
Mining of coal and lignite	05	0	0	0	0	0	0	0
Extraction of crude petroleum and natural gas	06	0	0	0	0	0	0	0
Mining of metal ores	07	0	0	0	0	0	0	0
Other mining and quarrying	08	1,380	40	1,410	130	50	180	1,600
Mining support service activities	09	0	0	0	0	0	0	0
Manufacture of food products	10	10,570	640	11,220	4,220	1,150	5,370	16,580
Manufacture of beverages and tobacco products	11/12	1,340	10	1,350	490	50	540	1,890
Manufacture of textiles	13	1,160	50	1,200	400	140	540	1,740
Manufacture of wearing apparel	14	290	30	320	480	140	620	950
Manufacture of leather and related products	15	0	20	20	10	20	30	50
Manufacture of wood and of products of wood and cork, except furniture; manufacture of articles of straw and plaiting materials	16	2,170	110	2,270	230	100	330	2,600
Manufacture of paper and paper products	17	1,170	10	1,180	240	30	270	1,450
Printing and reproduction of recorded media	18	1,000	30	1,030	350	140	490	1,520
Manufacture of coke and refined petroleum products	19	10	0	10	0	0	0	20
Manufacture of chemicals and chemical products	20	1,230	20	1,250	370	60	430	1,690
Manufacture of basic pharmaceutical products and pharmaceutical preparations	21	1,070	0	1,070	640	20	660	1,730
Manufacture of rubber and plastic products	22	4,700	60	4,760	730	200	930	5,690
Manufacture of other non-metallic mineral products	23	3,650	120	3,770	630	120	750	4,520
Manufacture of basic metals	24	450	10	450	30	20	50	510
Manufacture of fabricated metal products, except machinery and equipment	25	6,510	210	6,720	590	370	950	7,680
Manufacture of computer, electronic and optical products	26	2,730	60	2,790	750	80	830	3,620
Manufacture of electrical equipment	27	2,960	30	2,990	520	100	620	3,600
Manufacture of machinery and equipment n.e.c.	28	4,200	80	4,280	470	140	620	4,890
Manufacture of motor vehicles, trailers and semi-trailers	29	2,570	20	2,590	180	40	210	2,800
Manufacture of other transport equipment	30	5,620	100	5,730	780	70	850	6,570
Manufacture of furniture	31	1,780	90	1,870	330	100	420	2,290
Other manufacturing	32	670	50	710	310	110	430	1,140
Repair and installation of machinery and equipment	33	490	50	550	60	30	90	640
Electricity, gas, steam and air conditioning supply	35	940	10	960	370	70	440	1,400
Water collection, treatment and supply	36	550	0	550	0	0	10	550
Sewerage	37	230	10	230	30	20	40	280
Waste collection, treatment and disposal activities; materials recovery	38	3,210	100	3,310	350	100	460	3,770
Remediation activities and other waste management services	39	10	0	10	0	0	0	10
Construction of buildings	41	7,130	400	7,530	850	540	1,400	8,930
Civil engineering	42	7,030	150	7,170	630	200	830	8,000
Specialised construction activities	43	13,910	650	14,550	1,210	840	2,050	16,600
Wholesale and retail trade and repair of motor vehicles and motorcycles	45	8,590	770	9,360	1,270	820	2,090	11,450

Standard Industrial Classification 2007	Class	Male			Female			All Persons
		Full Time	Part Time	All Males	Full Time	Part Time	All Females	
Wholesale trade, except of motor vehicles and motorcycles	46	14,660	1,120	15,780	4,400	1,780	6,180	21,960
Retail trade, except of motor vehicles and motorcycles	47	17,090	15,970	33,060	18,700	40,750	59,450	92,510
Land transport and transport via pipelines	49	10,420	1,420	11,850	1,160	1,140	2,300	14,140
Water transport	50	350	0	360	130	30	160	510
Air transport	51	280	20	300	270	140	400	700
Warehousing and support activities for transportation	52	3,090	470	3,560	990	520	1,510	5,080
Postal and courier activities	53	3,120	920	4,040	530	620	1,150	5,180
Accommodation	55	2,380	2,070	4,460	2,310	2,830	5,140	9,600
Food and beverage service activities	56	6,360	7,590	13,950	5,440	13,030	18,470	32,420
Publishing activities	58	880	50	930	590	230	820	1,750
Motion picture, video and television programme production, sound recording and music publishing activities	59	300	290	590	210	330	540	1,130
Programming and broadcasting activities	60	510	60	570	370	100	470	1,040
Telecommunications	61	2,350	130	2,490	720	280	1,000	3,480
Computer programming, consultancy and related activities	62	5,660	150	5,810	1,660	410	2,070	7,880
Information service activities	63	50	10	50	10	10	20	70
Financial service activities, except insurance and pension funding	64	4,920	220	5,150	5,580	2,990	8,580	13,720
Insurance, reinsurance and pension funding, except compulsory social security	65	590	20	610	750	250	1,000	1,610
Activities auxiliary to financial services and insurance activities	66	1,320	100	1,420	1,800	700	2,500	3,910
Real estate activities	68	2,740	420	3,160	2,530	1,310	3,840	7,000
Legal and accounting activities	69	2,370	210	2,570	4,940	2,100	7,040	9,610
Activities of head offices; management consultancy activities	70	1,260	160	1,430	1,060	470	1,530	2,950
Architectural and engineering activities; technical testing and analysis	71	3,530	220	3,750	1,020	490	1,510	5,260
Scientific research and development	72	1,030	50	1,070	580	130	720	1,790
Advertising and market research	73	290	240	540	240	410	660	1,190
Other professional, scientific and technical activities	74	800	60	870	500	230	740	1,600
Veterinary activities	75	530	40	570	530	270	800	1,370
Rental and leasing activities	77	1,180	230	1,410	320	290	600	2,020
Employment activities	78	6,150	1,810	7,950	3,790	2,670	6,460	14,410
Travel agency, tour operator and other reservation service and related activities	79	180	30	210	620	360	980	1,190
Security and investigation activities	80	3,000	1,090	4,090	310	470	780	4,870
Services to buildings and landscape activities	81	3,830	1,700	5,530	1,130	4,400	5,530	11,060
Office administrative, office support and other business support activities	82	4,320	850	5,170	2,500	1,150	3,650	8,810
Public administration and defence; compulsory social security	84	27,380	2,640	30,020	20,250	7,560	27,810	57,830
Education	85	12,310	4,370	16,680	23,960	31,960	55,920	72,590
Human health activities	86	10,080	3,150	13,220	30,560	28,400	58,950	72,170
Residential care activities	87	1,270	530	1,800	4,410	5,530	9,940	11,740
Social work activities without accommodation	88	3,020	1,280	4,300	12,540	14,990	27,530	31,820
Creative, arts and entertainment activities	90	290	180	470	260	350	610	1,090
Libraries, archives, museums and other cultural activities	91	480	220	700	650	880	1,530	2,230
Gambling and betting activities	92	680	310	990	740	470	1,210	2,190
Sports activities and amusement and recreation activities	93	2,760	2,270	5,030	1,200	2,430	3,630	8,650
Activities of membership organisations	94	2,330	1,450	3,780	1,820	2,900	4,720	8,500
Repair of computers and personal and household goods	95	200	20	220	50	50	90	320
Other personal service activities	96	580	280	860	2,110	2,330	4,440	5,310
Total		269,330	65,460	334,800	182,400	185,680	368,070	702,870

* Figures may not sum due to rounding

¹See Notes to Editors, No.4

Table 1.4 N.I. Tourism and Leisure Employee Jobs[^] March 2011

	SIC	Male	Female	Total
Accommodation	55	4,460	5,140	9,600
Food and beverage service activities	56*	12,880	16,120	29,000
Travel agency, tour operator and other reservation service and related activities	79	210	980	1,190
Libraries, archives, museums and other cultural activities	91	700	1,530	2,230
Gambling and betting activities	92	990	1,210	2,190
Sports activities and amusement and recreation activities	93	5,030	3,630	8,650
Total		24,260	28,590	52,850

[^] Figures are rounded to the nearest 10 and may not sum due to rounding

* Excluding event catering and other food service activities

Unadjusted and Seasonally Adjusted Series By Sector

4

Data are NOT adjusted for seasonality unless otherwise stated

Table 1.5 N.I. Employee Jobs* by Broad Industry Sector

Unadjusted & Seasonally Adjusted 1995 – 2011

		Unadjusted					Seasonally Adjusted ¹				
		Manuf.	Const.	Serv.	Other	All	Manuf.	Const.	Serv.	Other	All
1996	Mar	101,850	23,580	426,610	25,850	577,880	102,300	23,580	427,290	25,850	579,010
	Jun	101,490	23,180	427,730	25,250	577,640	101,830	23,180	428,950	25,250	579,200
	Sep	102,470	23,390	429,870	25,290	581,020	102,130	23,390	431,970	25,290	582,780
	Dec	103,630	23,570	439,380	25,240	591,810	103,180	23,570	435,230	25,240	587,230
1997	Mar	103,380	23,380	436,190	25,110	588,050	103,850	23,380	436,940	25,110	589,270
	Jun	104,730	27,850	438,500	25,020	596,100	105,040	27,850	439,850	25,020	597,760
	Sep	105,330	28,510	442,170	25,090	601,090	104,980	28,510	444,320	25,090	602,900
	Dec	105,050	29,090	452,830	24,350	611,330	104,630	29,090	448,480	24,350	606,540
1998	Mar	104,050	29,500	451,270	24,280	609,110	104,530	29,500	452,070	24,280	610,380
	Jun	104,120	29,940	453,530	23,950	611,530	104,380	29,940	454,990	23,950	613,250
	Sep	105,270	30,390	455,720	23,880	615,270	104,940	30,390	457,900	23,880	617,120
	Dec	104,660	30,730	464,860	23,740	623,990	104,250	30,730	460,380	23,740	619,100
1999	Mar	102,680	30,960	463,510	23,710	620,870	103,150	30,960	464,330	23,710	622,160
	Jun	102,540	31,700	466,440	23,320	624,000	102,770	31,700	467,910	23,320	625,700
	Sep	103,080	33,510	470,270	23,270	630,120	102,770	33,510	472,580	23,270	632,130
	Dec	103,070	34,360	480,250	23,390	641,070	102,700	34,360	475,590	23,390	636,030
2000	Mar	101,880	34,540	477,710	23,350	637,480	102,330	34,540	478,610	23,350	638,820
	Jun	100,910	34,940	480,910	23,620	640,390	101,110	34,940	482,290	23,620	641,960
	Sep	101,140	35,690	482,340	23,580	642,750	100,840	35,690	484,860	23,580	644,970
	Dec	101,210	35,950	491,970	23,370	652,500	100,900	35,950	487,160	23,370	647,380
2001	Mar	99,990	36,250	489,520	23,140	648,900	100,390	36,250	490,410	23,140	650,200
	Jun	98,900	36,250	492,610	22,270	650,030	99,090	36,250	493,930	22,270	651,530
	Sep	97,360	36,530	495,230	22,310	651,420	97,060	36,530	497,960	22,310	653,860
	Dec	96,250	37,150	508,880	22,390	664,660	96,000	37,150	503,930	22,390	659,460
2002	Mar	94,860	36,990	506,920	22,270	661,040	95,220	36,990	507,730	22,270	662,210
	Jun	94,510	36,740	510,490	21,890	663,630	94,670	36,740	511,810	21,890	665,110
	Sep	93,620	36,720	512,350	21,920	664,600	93,330	36,720	515,330	21,920	667,290
	Dec	92,590	36,310	524,490	21,870	675,260	92,410	36,310	519,420	21,870	670,010
2003	Mar	90,560	35,860	520,610	21,900	668,930	90,870	35,860	521,240	21,900	669,870
	Jun	88,990	36,360	524,810	22,440	672,610	89,130	36,360	526,210	22,440	674,150
	Sep	88,970	36,440	525,110	22,380	672,910	88,670	36,440	528,270	22,380	675,770
	Dec	87,940	36,750	535,520	22,640	682,850	87,810	36,750	530,410	22,640	677,610
2004	Mar	87,110	37,100	533,700	22,610	680,530	87,420	37,100	534,150	22,610	681,280
	Jun	86,080	37,180	534,340	22,290	679,900	86,190	37,180	535,780	22,290	681,450
	Sep	86,230	37,270	537,950	22,480	683,930	85,940	37,270	541,270	22,480	686,940
	Dec	85,580	37,550	549,750	22,770	695,660	85,490	37,550	544,610	22,770	690,420
2005	Mar	84,970	37,770	550,930	22,430	696,090	85,260	37,770	551,230	22,430	696,690
	Jun	84,080	38,750	550,400	21,130	694,350	84,170	38,750	551,860	21,130	695,910
	Sep	84,520	39,310	550,270	21,310	695,420	84,220	39,310	553,730	21,310	698,570
	Dec	83,830	41,150	562,530	21,390	708,890	83,760	41,150	557,370	21,390	703,660

¹ Construction and Other Industries are not seasonally adjusted – Please see Note 5.

		Unadjusted					Seasonally Adjusted ²				
		Manuf.	Const.	Serv.	Other	All	Manuf.	Const.	Serv.	Other	All
2006	Mar	83,730	41,790	559,080	21,390	705,990	84,020	41,790	559,330	21,390	706,530
	Jun	83,550	42,300	558,750	20,830	705,440	83,630	42,300	560,100	20,830	706,860
	Sep	84,210	42,690	559,000	20,910	706,820	83,900	42,690	562,630	20,910	710,130
	Dec	84,040	43,140	569,820	20,990	717,990	83,990	43,140	564,600	20,990	712,720
2007	Mar	83,490	43,460	566,810	21,050	714,820	83,770	43,460	567,140	21,050	715,420
	Jun	84,070	44,710	569,910	20,890	719,590	84,150	44,710	571,090	20,890	720,850
	Sep	84,280	45,320	571,390	21,070	722,060	83,970	45,320	575,150	21,070	725,520
	Dec	83,520	46,820	584,150	20,170	734,670	83,480	46,820	578,830	20,170	729,300
2008	Mar	83,330	45,860	582,410	20,150	731,740	83,600	45,860	582,910	20,150	732,510
	Jun	83,390	44,860	583,520	20,370	732,140	83,470	44,860	584,480	20,370	733,170
	Sep	82,550	43,500	577,570	20,440	724,050	82,260	43,500	581,390	20,440	727,580
	Dec	80,200	41,670	584,690	20,040	726,590	80,140	41,670	579,440	20,040	721,280
2009	Mar	77,790	39,420	577,030	19,960	714,210	78,040	39,420	577,670	19,960	715,090
	Jun	75,360	38,210	576,280	19,910	709,760	75,430	38,210	577,040	19,910	710,590
	Sep	74,280	36,780	573,990	19,800	704,850	74,040	36,780	577,720	19,800	708,340

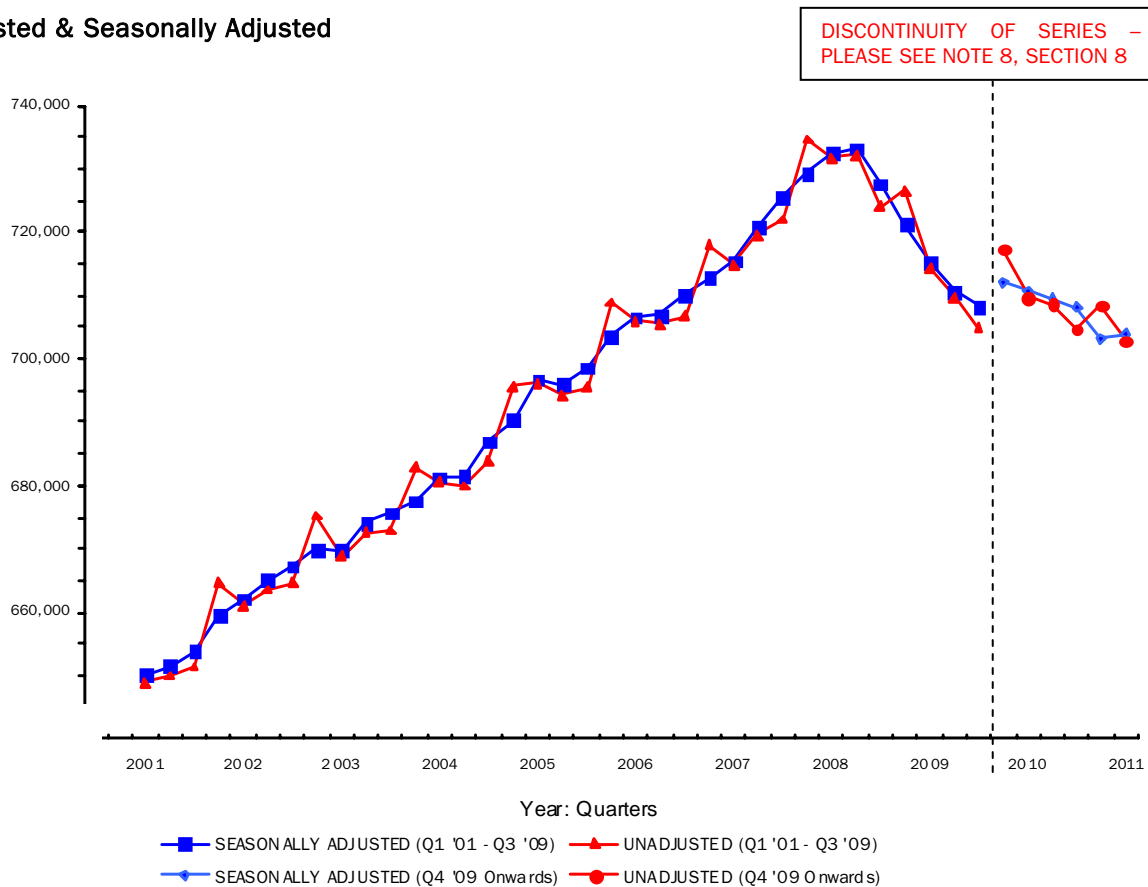
DISCONTINUITY IN SERIES – PLEASE SEE NOTE 8 IN SECTION 8[^]

2010	Dec (R)	73,640	37,210	586,680	19,810	717,350	73,560	37,210	581,540	19,810	712,130
	Mar (R)	72,970	37,040	579,940	19,800	709,750	73,210	37,040	580,650	19,800	710,690
	Jun (R)	73,030	36,260	579,890	19,540	708,710	73,100	36,260	580,540	19,540	709,440
	Sep (R)	73,730	35,820	575,670	19,520	704,740	73,510	35,820	579,350	19,520	708,210
2011	Dec (R)	74,680	33,590	580,620	19,490	708,390	74,580	33,590	575,610	19,490	703,280
	Mar (P)	74,180	33,530	575,730	19,430	702,870	74,410	33,530	576,480	19,430	703,860

*Figures may not sum due to rounding

Fig 1.5 N.I. Employee Jobs 2001-2011

Unadjusted & Seasonally Adjusted



² Construction and Other Industries are not seasonally adjusted – please see Note 5.

[^] Please note that there are a number of factors influencing the figure for December 2009: a) Discontinuity in series; b) Re-Allocation of sample; c) A real effect; d) For the Seasonally adjusted figure, each of the previous factors will have an impact on the Seasonal Adjustment software. For more information on any of these, please refer to Section 8.

Unadjusted and Seasonally Adjusted Series

Public / Private

5

Data are NOT adjusted for seasonality unless otherwise stated

Table 1.6 N.I. Employee Jobs[^] by Public and Private Sector

Unadjusted & Seasonally Adjusted 2002 – 2011

		Unadjusted		Seasonally* Adjusted	
		Public	Private	Public	Private
2002	Mar	205,110	455,930	204,390	457,790
	Jun	205,090	458,540	204,940	460,230
	Sep	205,910	458,690	207,140	460,370
	Dec	209,320	465,940	208,990	460,820
2003	Mar	210,850	458,080	210,090	459,740
	Jun	211,390	461,220	211,190	462,850
	Sep	211,910	461,000	213,250	462,930
	Dec	214,320	468,530	213,990	463,390
2004	Mar	216,270	464,250	215,450	465,730
	Jun	213,940	465,960	213,700	467,650
	Sep	216,330	467,600	217,780	469,650
	Dec	218,270	477,390	217,940	472,210
2005	Mar	219,530	476,560	218,630	477,920
	Jun	219,970	474,380	219,690	476,170
	Sep	219,490	475,930	221,050	478,010
	Dec	221,290	487,610	220,950	482,350
2006	Mar	221,540	484,450	220,590	485,770
	Jun	220,980	484,460	220,650	486,330
	Sep	219,520	487,290	221,170	489,440
	Dec	220,680	497,310	220,340	491,880
2007	Mar	221,210	493,610	220,230	495,040
	Jun	221,100	498,490	220,720	500,350
	Sep	217,790	504,270	219,540	506,500
	Dec	220,000	514,670	219,630	508,940
2008	Mar	220,860	510,870	219,860	512,600
	Jun	218,890	513,250	218,430	515,040
	Sep	214,440	509,610	216,290	511,820
	Dec	224,320	502,280	223,910	496,670
2009	Mar	225,500	488,710	224,450	490,550
	Jun	225,560	484,200	225,040	485,750
	Sep	223,580	481,270	225,610	483,320

DISCONTINUITY IN SERIES – PLEASE SEE NOTE 8 IN SECTION 8

	Dec	(R)	227,010	490,330	226,560	484,890
2010	Mar	(R)	226,640	483,110	225,560	485,010
	Jun	(R)	225,420	483,290	224,840	484,770
	Sep	(R)	221,760	482,980	223,880	484,990
	Dec	(R)	223,950	484,440	223,480	479,130
2011	Mar	(P)	224,020	478,850	222,940	480,730

Seasonally Adjusted Data*

The NI Public sector seasonally adjusted employee jobs estimate currently stands at 222,940. This represents a decrease of 0.2% (530 jobs) over the quarter between December 2010 and March 2011 and a decrease since March 2010 of 1.2% (2,620 jobs).

The private sector employee jobs estimate at March 2011 was 480,730. This is up slightly on the previous quarter estimate by 0.3% (1,600 jobs), but has fallen over the year by 0.9% (4,280 jobs).

Unadjusted Data

Further analysis of the Public Sector can be obtained by looking at the seasonally unadjusted data. The NI public sector unadjusted employee jobs estimate for March 2011 stands at 224,020. This has remained flat over the quarter, whilst decreasing 1.2% (2,620 jobs) over the year from March 2010.

Table 1.7 shows the largest increase over the quarter (1,430 jobs) came from the Northern Ireland Civil Service from within the central government section of the public sector with the majority of that increase coming from the reclassification of Department of Justice Staff becoming civil servants.

*Seasonally Adjusted Public and Private split may not sum to the Seasonally Adjusted total reported in Section 4. Also, rounding may have an effect on the sum.

Figure 1.5 – Public Sector Employee Jobs Seasonally Adjusted & Unadjusted 2001 – 2011

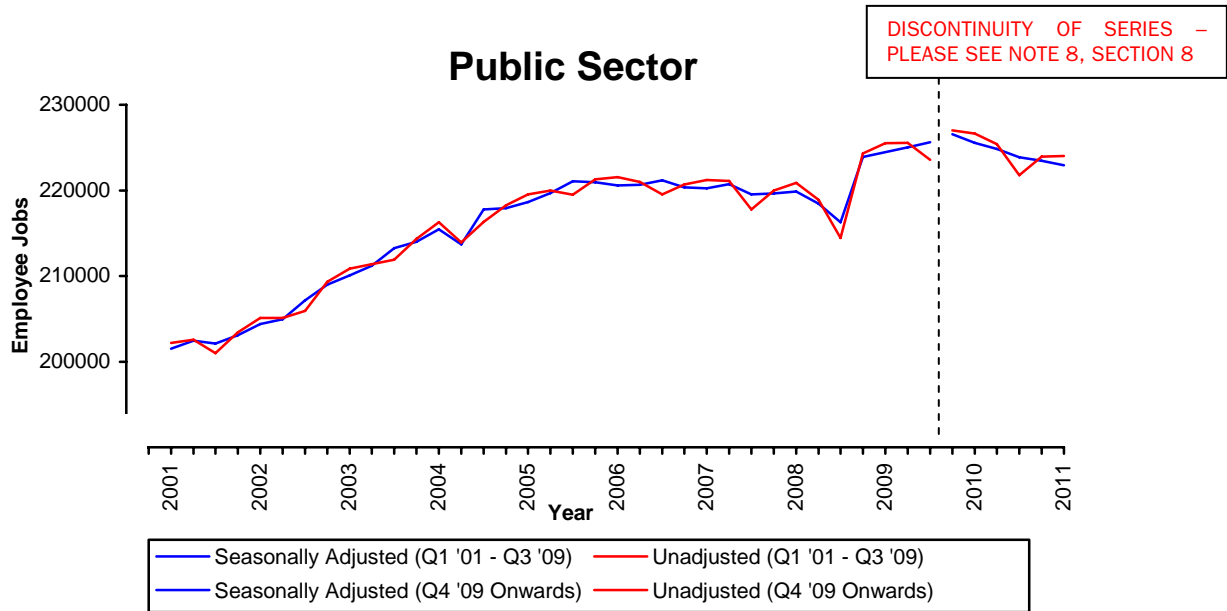


Figure 1.6 – Private Sector Employee Jobs Seasonally Adjusted & Unadjusted 2001 – 2011

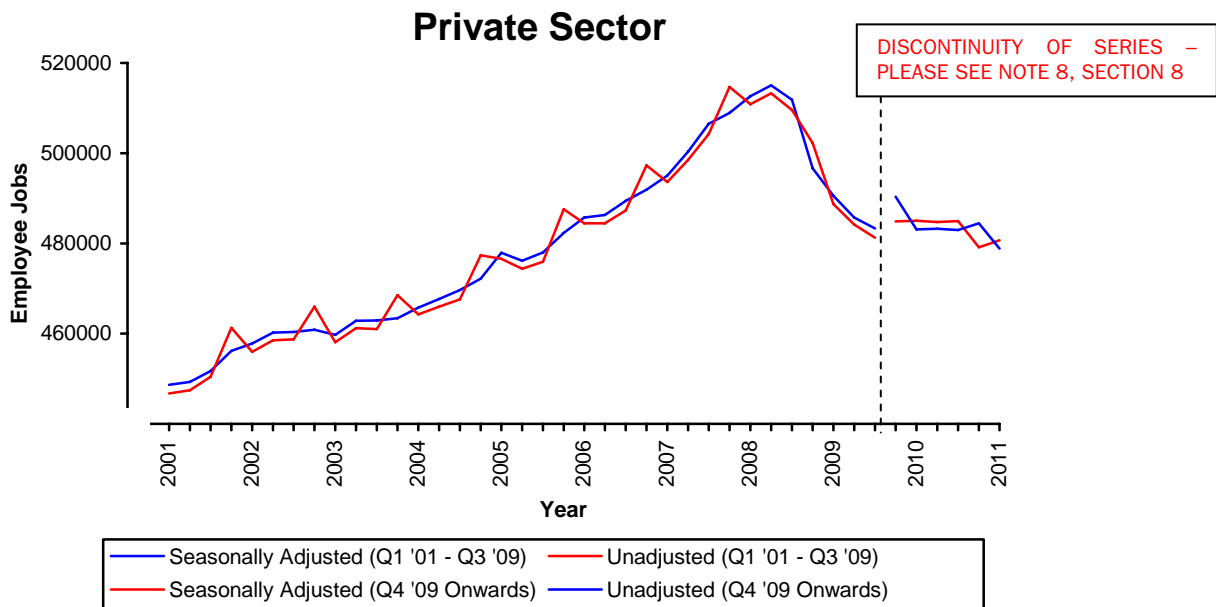
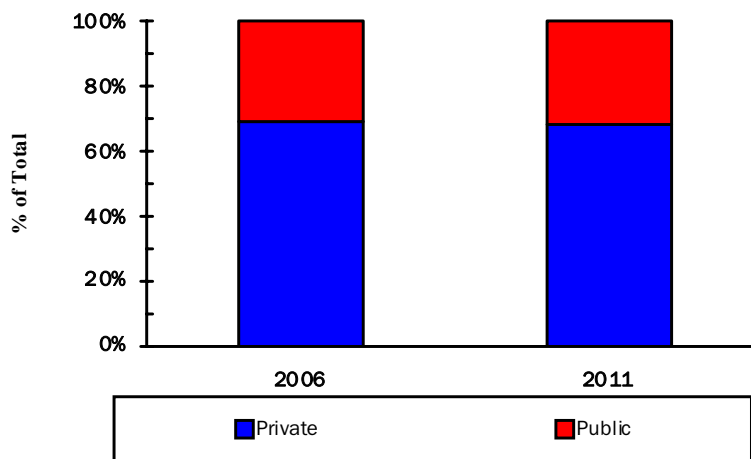


FIG 1.7 Seasonally Adjusted Employee Jobs, Public / Private Split, March 2006 & March 2011



Public Sector Data

By Section Department

6

Data are NOT adjusted for seasonality unless otherwise stated

Table 1.7 - N.I. Public Sector Employee Jobs by Section December 2010 & March 2011

	December 2010 (Revised)			March 2011 (Provisional)		
	Male	Female	Total	Male	Female	Total
NI CENTRAL GOVERNMENT	37,600	75,490	113,090	38,020	76,650	114,670
Office of the First and Deputy First Minister	170	210	380	170	210	380
Department of Agriculture and Rural Development (DARD)	2,390	1,480	3,870	2,370	1,480	3,850
Department for Culture, Arts and Leisure (DCAL)	140	130	270	140	130	270
Department of Enterprise, Trade and Investment (DETI)	300	330	630	290	320	620
Department of Education (DE)	230	390	620	230	390	620
Department of Environment (DOE)	1,420	1,320	2,740	1,400	1,310	2,710
Department of Finance and Personnel (DFP)	1,850	1,640	3,490	1,840	1,690	3,530
Department for Employment and Learning (DEL)	700	1,420	2,120	690	1,410	2,100
Department of Regional Development (DRD)	1,860	590	2,450	1,840	580	2,420
Department for Social Development (DSD)	3,130	4,470	7,600	3,080	4,420	7,500
Department of Health, Social Services and Public Safety (DHSSPS)	370	380	750	370	380	740
Department of Justice (DOJ)	370	480	850	900	1,550	2,450
Public Prosecution Service	220	360	580	220	350	570
Total of 12 Government Departments (Northern Ireland Civil Service)	13,130	13,210	26,340	13,550	14,220	27,760
Fire Service	2,010	230	2,230	2,020	230	2,250
NI Audit Office	70	70	150	70	80	150
Northern Ireland Assembly	330	180	510	330	190	520
Northern Ireland Office ³	90	110	200	90	110	190
Parliamentary Commissioner for Administration & Complaints	10	20	30	10	20	30
Prison Service	1,420	430	1,850	1,410	420	1,840
Police Service of Northern Ireland	6,850	3,680	10,530	6,840	3,720	10,560
NHS Trusts	13,260	57,200	70,460	13,260	57,310	70,570
British Broadcasting Corporation (BBC)	400	330	720	400	330	730
Assets Recovery Agency	40	30	70	40	30	70
BODIES UNDER AEGIS OF NI CENTRAL GOVERNMENT	20,250	60,580	80,830	19,840	59,810	79,660
Office of the First and Deputy First Minister	90	150	240	90	150	240
Department of Agriculture and Rural Development (DARD)	30	40	70	30	40	70
Department for Culture, Arts and Leisure (DCAL)	340	460	800	340	450	790
Department of Enterprise, Trade and Investment (DETI)	370	530	900	390	540	930
Department of Education (DE)	180	320	500	190	310	510
Department of Finance and Personnel (DFP)	200	240	430	210	250	450
Department for Employment and Learning (DEL)	330	270	600	320	270	590
Department of Regional Development (DRD)	1,100	250	1,350	1,110	250	1,360
Department of Health, Social Services and Public Safety (DHSSPS)	750	1,340	2,090	750	1,350	2,090
Department for Social Development (DSD)	1,610	1,630	3,240	1,600	1,630	3,230
Department of Justice (DoJ) ³	400	900	1,290	0	0	0
Northern Ireland Office	320	580	910	310	580	890
Teaching Staff; Non-Teaching Staff & Education and Library Boards	14,530	53,890	68,410	14,510	53,990	68,500
UK CENTRAL GOVERNMENT	2,360	2,310	4,670	2,350	2,310	4,670
LOCAL GOVERNMENT (District Councils)	7,000	5,070	12,060	6,980	5,090	12,070
PUBLIC CORPORATIONS	9,250	4,040	13,300	8,940	4,020	12,960
NI Based	5,430	3,350	8,780	5,450	3,410	8,850
UK Based	3,830	690	4,520	3,490	620	4,110
TOTAL	76,460	147,490	223,950	76,130	147,890	224,020

³ The Northern Ireland Prison Service (Administration Only) and the Northern Ireland Courts & Tribunals Service employees are now counted within the Department of Justice. From Q1 2011, these employees are classed as civil servants.

Special Feature

7

Data are NOT adjusted for seasonality unless otherwise stated

Between March 2001 and March 2011 the total number of employee jobs in NI has risen by 53,970 (8.3%). Fig 1.8 illustrates the change in employee job levels over the past 10 years in each of the main industry sectors. It is noticeable that the changes in Manufacturing (-25,810), Construction (-2,720) and Other Industries (-3,710) are relatively small compared to the large increase in Service Sector jobs (+86,210). Indeed, the increase in Services alone accounts for the total increase in employee jobs during the period.

Fig 1.8 Employee jobs by Main Industry Sector, March 2001 & March 2011



FIG 1.9 - CHANGES IN SERVICE SECTOR JOBS MARCH 2001 - MARCH 2011

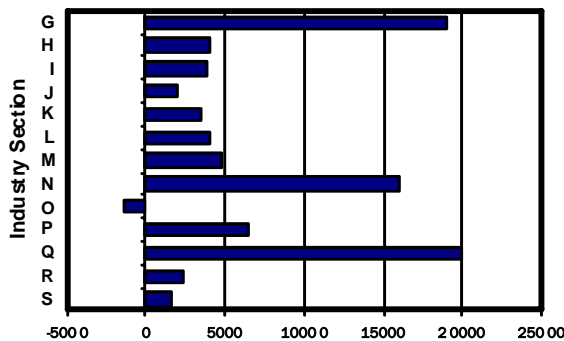


Fig 1.9 shows the change in Service Sector jobs in more detail. It indicates that the largest increases have occurred in Human health and social work activities (+20,030), Wholesale and retail trade; repair of motor vehicles and motorcycles (+19,100), Administrative and support service activities (+16,010), Education (+6,410), Professional, scientific and technical activities (+4,750). The rise in these five industry sections accounts for over three quarters (76.9%) of the total increase in employee jobs in the service sector during the last ten years.

The increase in Human Health & Social Work Activities was largely due to an increase of 12,970 in Human Health Activities, with smaller increases occurring in Social Work Activities without Accommodation (+5,150) and in Residential Care Activities (+1,920).

The majority of the increase in Wholesale and Retail Trade; Repair Of Motor Vehicles And Motorcycles has occurred in Retail Trade, Except Of Motor Vehicles And Motorcycles (+18,370) with a smaller increase in this industry section occurring in the Wholesale and Retail Trade And Repair Of Motor Vehicles And Motorcycles (+1,360). There has however, been a decline in Wholesale Trade, Except Of Motor Vehicles And Motorcycles (-630).

G	Wholesale and retail trade; repair of motor vehicles and motorcycles
H	Transportation and storage
I	Accommodation and food service activities
J	Information and communication
K	Financial and insurance activities
L	Real estate activities
M	Professional, scientific and technical activities
N	Administrative and support service activities
O	Public administration and defence; compulsory social security
P	Education
Q	Human health and social work activities
R	Arts, entertainment and recreation
S	Other service activities

Notes to Editors

8

Note 1 – Background

Estimates of the number of employee jobs are obtained from the Quarterly Employment Survey (QES). The QES covers all public sector bodies, all private sector firms with 25 or more employees and a sample of the remainder. The sample size is such that estimates of total employee jobs should be accurate to within +/- 1% of the Census of Employment total. The survey collects information on numbers of persons in full-time and part-time employment. It should be noted that the survey counts the number of jobs rather than the number of persons with jobs. For example, a person holding both a full-time job and a part-time job, or someone with two part-time jobs, will be counted twice.

The QES is a voluntary survey of employers in Northern Ireland and results from it are collated into industry classes using the 2007 Standard Industrial Classification (SIC07). As a result, there is no breach of confidentiality.

Note 2 – Revisions Policy

It is normal practice for Quarterly Employment Survey estimates to be revised. All quarters back to the latest published Census of Employment (currently Q4 2009 onwards) are provisional and subject to revision in light of (a) late responses to surveys and administrative sources, (b) where cross survey congruence checks provide more accurate data and (c) there are revisions to seasonal adjustment factors which are re-estimated every quarter. A common pitfall in interpreting series is that expectations of accuracy and reliability in early estimates are often too high. Revisions are an inevitable consequence of the trade off between timelines and accuracy. Early estimates are based on incomplete data.

Very few statistical revisions arise as a result of 'errors' in the popular sense of the word. All estimates, by definition, are subject to statistical 'error' but in this context the word refers to the uncertainty inherent in any process or calculation that uses sampling, estimation or modelling. Most revisions reflect either the adoption of new statistical techniques, or the incorporation of new information, which allows the statistical error of previous statements to be reduced. Only rarely are there avoidable 'errors' such as human or system failures, and such mistakes are made quite clear when they do occur.

A QES Revisions policy and tables including summary information on the size and direction of revisions for the Quarterly Employment Survey are available under the following link:

http://www.detini.gov.uk/deti-stats-index/stats-surveys/stats-qes/revisions_to_qes_estimates.htm

Note 3 – Coverage

The quarterly survey covers all Industrial Sections apart from Agriculture. Overall employment (i.e. employees and the self-employed) estimates for the agricultural sector are provided, on an annual basis, from the Department of Agriculture and Rural Development's (DARD) Farm Census. Self-employed agriculture workers are defined as including full-time farmers and partners on all agricultural businesses. Agriculture employees include all workers on agricultural businesses other than (a) part-time farmers and partners and (b) farmers' spouses. They include full-time, part-time and casual workers, both paid and unpaid.

For further information on the Quarterly Employment Survey, please see the link below to the background notes and methodology guide.

<http://www.detini.gov.uk/deti-stats-index/stats-surveys/stats-qes/stats-background-to-qes.htm>

Note 4 – Public Sector

Public sector jobs comprise Central Government (including Bodies under the aegis of Central Government), Local Government and Public Corporations. An announcement in April 1993 transferred National Health Service Trusts from 'Bodies under the aegis of Central Government' to 'Public Corporations'. A subsequent announcement by the Public Sector Classification Committee (PSCC) in July 2003 stated that all NHS Trusts should retrospectively be reclassified to Central Government. In addition, following advice from PSCC, Northern Ireland Housing Executive employees were reclassified from SIC 75 to SIC 70 in December 2006. This change applies to each quarter from Quarter 1 2004 onwards. From 1st April 2007, The Water Service became a Government owned company known as "Northern Ireland Water". As a result its employees have been transferred from "NI Central Government" to "Bodies under the Aegis of NI Central Government".

Note 5 – Seasonal Adjustment

A seasonally adjusted employment series provides a better indication of underlying trends in employment. This series is available on a consistent basis from June 1978 onwards and figures by main industrial sector from 1995 onwards are shown in Table 1.5. At the latest review of our seasonal adjustment process, it was found that there was no seasonality in the Construction Sector and also in Other Industries.

Note 6 – Census of Employment

Information on employee jobs at a sub Northern Ireland level (e.g. District Council Area (DCA), Parliamentary Constituency Area (PCA), Ward Level) and at the 5-digit SIC03 level are available from the Northern Ireland Census of Employment. Details of the Census of Employment results are available from Statistics Research Branch Tel: (028) 9052 9379 or on our Internet website <http://www.detini.gov.uk/deti-stats-index.htm>

Note 7 – NI Programme for Government

QES employee jobs estimates feed into UK wide workforce jobs figures. These in turn are used as the denominator for regional productivity measures. As part of the NI programme for government, a public sector agreement (PSA) target has been set for Northern Ireland to halve the private sector productivity gap with the UK (excluding the Greater South East) by 2015. See following link:

<http://www.pfgbudgetni.gov.uk/finalpfg.pdf> (p10).

Details of progress towards this target can be found at:

www.pfgbudgetni.gov.uk/pfg_delivery_report_q4_08_09_-_final_-_pdf_version-5.pdf

Note 8 – Discontinuity

Users of QES data should be aware that the sample coverage used to derive employee jobs estimates in NI has been extended. This change has been introduced to provide more comprehensive estimates of employee jobs and also to ensure a consistency of methodology between the 3 main sources of this information namely the NI QES, the NI Census of Employment and the new NI Business Register Employment Survey (BRES). The extension in sample coverage has resulted in a discontinuity in the employee jobs series from the reference period Q3 2009 onwards. A more detailed note on these changes and their impact are available at the following link: <http://www.detini.gov.uk/deti-stats-index/stats-surveys/stats-qes-discontinuity-notice.htm>