



Northern Ireland

Quarterly Employment Survey (QES) Supplement

March 2010 Published 16/06/2010

- The QES is a business survey that has been carried out in Northern Ireland since 1978. The QES has a sample size of approximately 5,500 and covers all employers with at least 25 employees, all public sector employers and a representative sample of smaller firms.
- The March 2010 seasonally adjusted employee jobs figure stands at 700,210.
- This represents a seasonally adjusted decrease of 0.2% (or 1,280 jobs) from the revised December 2009 estimate of 701,490.
- Over the quarter seasonally adjusted employee jobs decreased in the Service Sector by 0.1% (660 jobs), in the Construction Sector by 1.3% (460 jobs), and in the Manufacturing sector by 0.2% (150 jobs). Jobs in "Other Industries" also decreased by 0.1% (20 Jobs) over the quarter.
- The March 2010 seasonally adjusted Public Sector employee jobs figure stands at 224,468.
- This represents a decrease of 0.3% (783 jobs) since December 2009 and an increase of 0.3% (747 jobs) over the past year.
- The March 2010 seasonally unadjusted figure stands at 699,450.
- This represents a decrease of 1.1% (7,590 jobs) since December 2009 and a decrease of 1.9% (13,340 jobs) in the past year.
- Over the year, March 2009 to March 2010, the unadjusted employee jobs figure for Construction decreased by 12.9% (5,020 jobs), while Manufacturing employee jobs decreased by 5.4% (4,170 jobs) and employee jobs in the Service Sector decreased by 0.7% (3,840 jobs)
- The net quarterly decrease in employee jobs (7,590) is comprised of decreases in both the number of full-time employee jobs (3,490) and part-time employee jobs (4,100).



A NATIONAL STATISTICS PUBLICATION

National Statistics are produced to high professional standards set out in the National Statistics Code of Practice. They undergo regular quality assurance reviews to ensure that they meet customer needs. They are produced free from any political interference.

For general enquiries about National Statistics, contact
The National Statistics Public Enquiry Service on **0845 601 3034**
minicom: 01633 812399
E-mail: info@statistics.gov.uk
Fax: 01633 652747
Letters: Room 1015, Government Buildings, Cardiff Road, Newport,
Gwent, South Wales NP10 8XG

You can also find National Statistics on the Internet – go to
www.statistics.gov.uk

Department of Enterprise,
Trade and Investment

**Northern Ireland
Quarterly Employment Survey (QES)
Supplement**

March 2010

Crown Copyright

Contents

1

Executive Summary
Page 1

2

NI Employee Jobs
Page 2 - 4

3

2-Digit Breakdown
Pages 5 - 7

4

Unadjusted & Seasonally
Adjusted Series (By Sector)
Page 8 - 9

5

Unadjusted & Seasonally Adjusted Series
(Public / Private)
Page 10 - 11

6

Public Sector Data (By Section Department)
Page 12

7

Special Feature
Page 13

8

Notes to Editors
Page 14

Executive Summary

1

Introduction

This bulletin presents data from the Northern Ireland Quarterly Employment Survey (QES), which is conducted by Statistics Research Branch of the Department of Enterprise, Trade and Investment (DETI).

The QES provides short-term employee jobs estimates for Northern Ireland, which are then used by the Office for National Statistics (ONS) to feed into the calculation of the quarterly workforce jobs estimates for the United Kingdom as a whole.

The QES covers all public sector bodies, all private sector firms with 25 or more employees and a sample of the remainder. The sample size is such that estimates of total employee jobs should be accurate to within +/- 1% of the Census of Employment total. The survey collects information on the number of males/females in full-time and part-time employment by business activity. The results are then collated into industry classes using the 2007 Standard Industrial Classification (SIC07).

It should be noted that the survey counts the number of jobs rather than the number of persons with jobs. For example, a person holding both a full-time job and part-time job, or someone with two part-time jobs, will be counted twice.

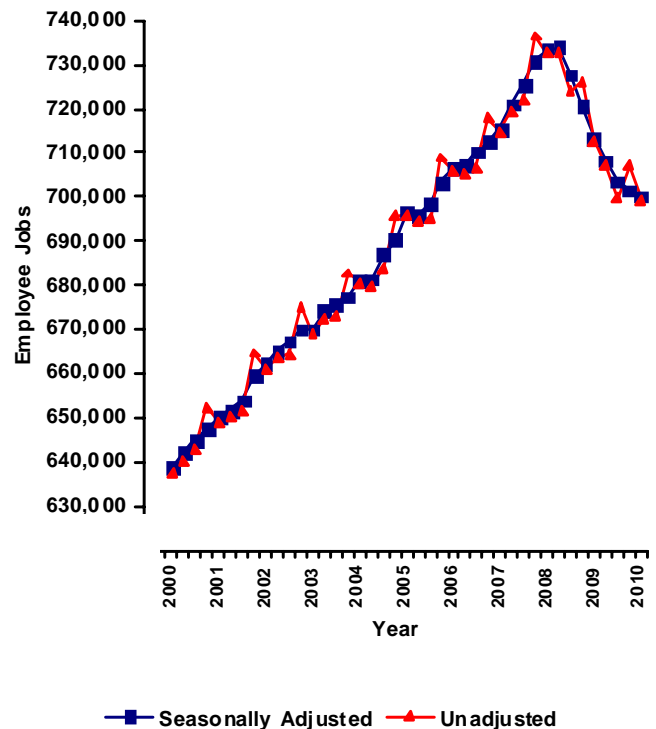
Seasonally Adjusted

The March 2010 seasonally adjusted employee jobs figure stands at 700,210.

This represents a seasonally adjusted decrease of 0.2% (or 1,280 jobs) from the revised December 2009 estimate of 701,490.

Over the quarter seasonally adjusted employee jobs decreased in the Service Sector by 0.1% (660 jobs), in the Construction Sector by 1.3% (460 jobs), and in the Manufacturing sector by 0.2% (150 jobs). Jobs in "Other Industries" also decreased by 0.1% (20 Jobs) over the quarter.

Fig 1.0 Employee Jobs Seasonally Adjusted / Unadjusted 2000 - 2010



Unadjusted

The March 2010 seasonally unadjusted figure stands at 699,450.

This represents a decrease of 1.1% (7,590 jobs) since December 2009 and a decrease of 1.9% (13,340 jobs) in the past year.

Over the year, March 2009 to March 2010, the unadjusted employee jobs figure for Construction decreased by 12.9% (5,020 jobs), while Manufacturing employee jobs decreased by 5.4% (4,170 jobs) and employee jobs in the Service Sector decreased by 0.7% (3,840 jobs)

Date of Next Publication

Quarterly Employment Survey results for Quarter 2 2010 will be published on Wednesday 15th September 2010.

NI Employee Jobs

2

Data are NOT adjusted for seasonality unless otherwise stated

Employee Jobs from the Quarterly Employment Survey

Table 1.1 below provides a summary of the latest results from the Quarterly Employment Survey. It shows that in **March 2010** there were an estimated 699,450 employee jobs in Northern Ireland.

Table 1.1 NI Employee Jobs, Full-time/Part-time Split, March 2010

	Male		Female		Total	% change in total	
	Full Time	Part Time	Full Time	Part Time		Since last quarter	Since last year
Manufacturing	55,740	1,670	13,060	3,060	73,520	-0.5%	-5.4%
Construction	28,760	1,110	2,590	1,450	33,900	-2.0%	-12.9%
Services	170,810	55,730	166,290	178,570	571,400	-1.1%	-0.7%
Other ¹	10,240	7,600	1,490	1,290	20,630	-0.1%	-1.4%
Total	265,550	66,110	183,440	184,360	699,450	-1.1%	-1.9%

¹ Covers Industry Sections A, B, C and E

* Figures are rounded to the nearest 10 and may not sum due to rounding

Fig 1.1 shows the Male/Female, Full-time/Part-time breakdown of employee jobs in Northern Ireland, as at March 2010. Female employee jobs account for just over half of all employee jobs in NI (367,800 female employee jobs, compared to 331,650 males). There is, however, a significant difference in the working patterns of male and female employees. Just over half (50.1%) of female employee jobs are part-time, whereas only 19.9% of male employees work on a part-time basis.

Fig 1.1 Composition of Employee Jobs, March 2010

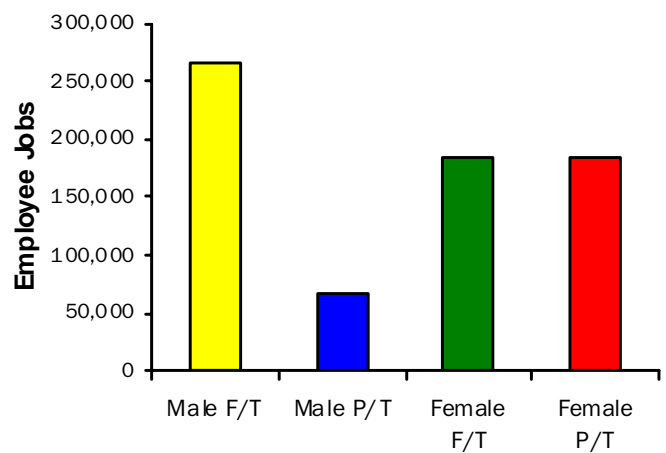


Fig 1.2 shows the annual and quarterly changes in employee jobs. Between December 2009 and March 2010 the number of employee jobs in NI fell by 1.1% (-7,590 jobs). This consisted of a decrease in the Service Sector (-6,540), and also in both Construction (-690) and in Manufacturing (-340).

Between March 2009 and March 2010 the number of employee jobs decreased by 1.9% (13,340). This consisted of decreases in Construction (-5,020), Manufacturing (-4,170) and the Service Sector (-3,840), and also in Other Industries (-300).

Fig 1.2 Annual and Quarterly Changes in Employee Jobs

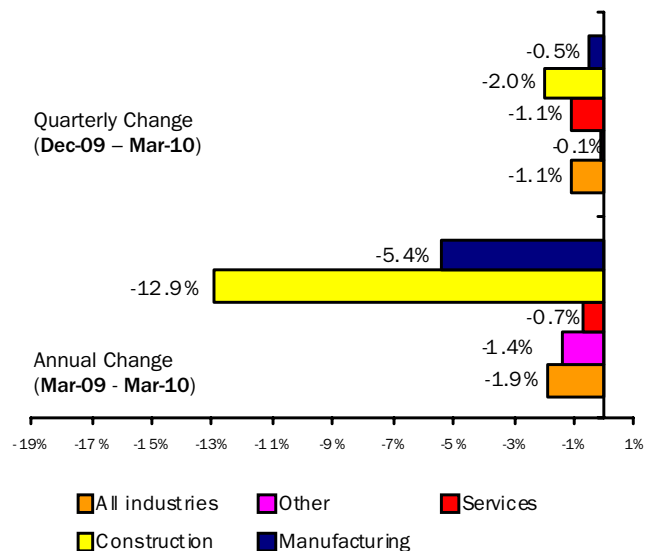


Fig 1.3 Employee Jobs, Male/Female, Full-Time/Part-Time Split, March 2010

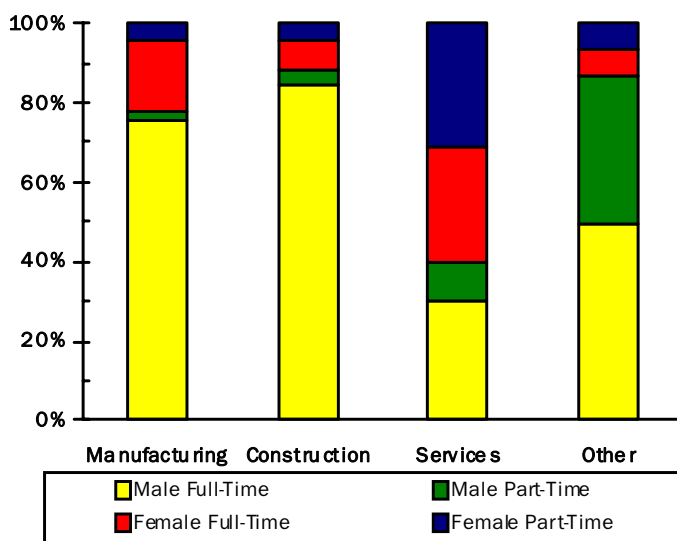


Fig 1.3 shows the male/female, full-time/part-time split for each broad industry sector within Northern Ireland. It highlights the large proportion of employee jobs in the Manufacturing and Construction Sectors that are occupied by male full-time employees (75.8% for Manufacturing, 84.8% for Construction). In contrast, females occupy 60.4% of the 571,400 employee jobs within the Service Sector. These female jobs within Services are in turn divided fairly evenly between full-time (48.2%) and part-time (51.8%) workers.

Table 1.2 on page 4 shows Employee Jobs by Industry Section for March 2010. Comparative figures for the previous quarter (December 2009) and for the previous year (March 2009) are also included.

Table 1.2 N.I. Employee Jobs by Industry Section

	SIC 07 Sections	March 2009 (Revised)			December 2009 (Revised)			March 2010 (Provisional)		
		Male	Female	Total	Male	Female	Total	Male	Female	Total
Agriculture, Forestry and Fishing	A	10,670	1,680	12,360	10,590	1,670	12,260	10,580	1,660	12,240
Mining and quarrying	B	1,660	220	1,870	1,510	210	1,710	1,490	210	1,700
Manufacturing	C	60,910	16,790	77,700	57,580	16,280	73,870	57,410	16,120	73,520
Electricity, gas, steam and air conditioning supply	D	1,750	440	2,180	1,740	460	2,190	1,750	470	2,220
Water supply, sewerage, waste management and remediation activities	E	4,060	460	4,520	4,040	440	4,480	4,020	440	4,460
Construction	F	34,370	4,560	38,920	30,460	4,130	34,590	29,860	4,040	33,900
Wholesale and retail trade; repair of motor vehicles and motorcycles	G	57,450	68,070	125,520	59,080	69,600	128,680	56,840	66,730	123,570
Transportation and storage	H	20,020	5,270	25,300	20,190	5,180	25,370	19,700	5,080	24,780
Accommodation and food service activities	I	17,840	23,150	40,990	18,240	23,620	41,860	18,030	23,310	41,340
Information and communication	J	10,730	5,430	16,170	9,930	4,950	14,890	9,840	4,840	14,680
Financial and insurance activities	K	7,250	12,690	19,940	7,020	12,140	19,160	7,000	12,080	19,070
Real estate activities	L	2,950	3,410	6,350	2,980	3,470	6,440	2,940	3,390	6,320
Professional, scientific and technical activities	M	10,740	13,110	23,850	10,540	12,870	23,410	10,340	12,680	23,030
Administrative and support service activities	N	22,310	19,510	41,820	21,830	18,070	39,900	22,190	18,240	40,430
Public administration and defence; compulsory social security	O	31,230	27,760	59,000	31,050	27,960	59,020	30,970	27,870	58,840
Education	P	17,550	56,830	74,380	17,460	57,200	74,670	17,490	57,560	75,060
Human health and social work activities	Q	19,080	95,960	115,040	19,360	98,210	117,570	19,810	98,010	117,810
Arts, entertainment and recreation	R	6,810	6,710	13,520	6,890	6,760	13,640	6,720	6,570	13,290
Other service activities	S	4,730	8,660	13,390	4,680	8,650	13,340	4,690	8,510	13,200
TOTAL	A-S	342,110	370,680	712,790	335,180	371,860	707,040	331,650	367,800	699,450

* Figures are rounded to the nearest 10 and may not sum due to rounding
Full-time/Part-time estimates available on request

2-Digit Breakdown

3

Data are NOT adjusted for seasonality unless otherwise stated

Table 1.3 N.I. Employee Jobs by 2-digit SIC07 Class March 2010

Standard Industrial Classification 2007	Class	Male			Female			All Persons
		Full Time	Part Time	All Males	Full Time	Part Time	All Females	
Crop and animal production, hunting and related service activities	01	2,790	7,430	10,220	510	1,050	1,560	11,790
Forestry and logging	02	250	10	260	40	30	70	330
Fishing and aquaculture	03	80	20	100	20	10	30	130
Mining of coal and lignite	05	0	0	0	0	0	0	0
Extraction of crude petroleum and natural gas	06	0	0	0	0	0	0	0
Mining of metal ores	07	0	0	0	0	0	0	0
Other mining and quarrying	08	1,470	30	1,490	160	50	210	1,700
Mining support service activities	09	0	0	0	0	0	0	0
Manufacture of food products	10	10,850	680	11,530	4,350	1,150	5,510	17,040
Manufacture of beverages and tobacco products	11/12	1,290	10	1,300	490	50	540	1,840
Manufacture of textiles	13	970	30	1,000	320	110	430	1,430
Manufacture of wearing apparel	14	280	40	320	480	130	600	920
Manufacture of leather and related products	15	10	20	30	20	30	40	70
Manufacture of wood and of products of wood and cork, except furniture; manufacture of articles of straw and plaiting materials	16	2,340	80	2,420	210	100	310	2,730
Manufacture of paper and paper products	17	1,350	10	1,360	290	40	330	1,690
Printing and reproduction of recorded media	18	1,020	30	1,050	380	120	490	1,540
Manufacture of coke and refined petroleum products	19	30	0	30	10	0	10	40
Manufacture of chemicals and chemical products	20	1,340	50	1,390	400	80	470	1,870
Manufacture of basic pharmaceutical products and pharmaceutical preparations	21	1,010	10	1,010	580	30	610	1,620
Manufacture of rubber and plastic products	22	4,860	60	4,910	960	200	1,160	6,070
Manufacture of other non-metallic mineral products	23	3,870	110	3,980	640	140	770	4,750
Manufacture of basic metals	24	300	10	310	30	10	40	350
Manufacture of fabricated metal products, except machinery and equipment	25	5,780	160	5,940	530	270	800	6,740
Manufacture of computer, electronic and optical products	26	2,710	20	2,730	810	80	890	3,620
Manufacture of electrical equipment	27	2,850	20	2,870	530	70	600	3,470
Manufacture of machinery and equipment n.e.c.	28	4,010	60	4,070	450	130	580	4,650
Manufacture of motor vehicles, trailers and semi-trailers	29	2,410	20	2,430	160	30	190	2,620
Manufacture of other transport equipment	30	5,630	100	5,740	820	70	890	6,630
Manufacture of furniture	31	1,970	100	2,070	300	110	420	2,480
Other manufacturing	32	560	40	590	300	100	400	990
Repair and installation of machinery and equipment	33	310	20	330	30	20	40	380
Electricity, gas, steam and air conditioning supply	35	1,750	10	1,750	440	40	470	2,220
Water collection, treatment and supply	36	590	0	590	0	0	0	590
Sewerage	37	250	0	250	30	10	50	300
Waste collection, treatment and disposal activities; materials recovery	38	3,080	110	3,180	300	90	390	3,570
Remediation activities and other waste management services	39	0	0	0	0	0	0	0
Construction of buildings	41	7,460	420	7,870	870	530	1,400	9,270
Civil engineering	42	6,360	120	6,480	540	180	720	7,200
Specialised construction activities	43	14,940	570	15,510	1,180	730	1,920	17,430
Wholesale and retail trade and repair of motor vehicles and motorcycles	45	8,510	720	9,220	1,270	710	1,980	11,210

Standard Industrial Classification 2007	Class	Male			Female			All Persons
		Full Time	Part Time	All Males	Full Time	Part Time	All Females	
Wholesale trade, except of motor vehicles and motorcycles	46	14,810	970	15,790	4,380	1,730	6,110	21,900
Retail trade, except of motor vehicles and motorcycles	47	16,110	15,720	31,830	18,450	40,180	58,640	90,460
Land transport and transport via pipelines	49	10,300	1,390	11,690	1,100	1,050	2,150	13,840
Water transport	50	330	0	330	140	30	160	490
Air transport	51	270	20	290	260	110	380	670
Warehousing and support activities for transportation	52	3,030	320	3,350	910	390	1,300	4,650
Postal and courier activities	53	3,060	980	4,040	540	560	1,100	5,130
Accommodation	55	2,330	1,970	4,290	2,300	2,690	4,980	9,280
Food and beverage service activities	56	6,170	7,570	13,730	5,480	12,850	18,330	32,070
Publishing activities	58	1,040	50	1,090	640	230	870	1,960
Motion picture, video and television programme production, sound recording and music publishing activities	59	350	310	660	220	340	560	1,210
Programming and broadcasting activities	60	580	60	640	400	120	520	1,160
Telecommunications	61	2,190	170	2,360	660	330	1,000	3,360
Computer programming, consultancy and related activities	62	4,940	110	5,050	1,540	340	1,880	6,920
Information service activities	63	30	10	40	10	20	30	70
Financial service activities, except insurance and pension funding	64	4,760	200	4,970	5,690	2,830	8,520	13,490
Insurance, reinsurance and pension funding, except compulsory social security	65	640	40	680	830	290	1,120	1,800
Activities auxiliary to financial services and insurance activities	66	1,250	100	1,350	1,790	640	2,430	3,780
Real estate activities	68	2,650	290	2,940	2,380	1,010	3,390	6,320
Legal and accounting activities	69	2,310	170	2,480	5,110	1,790	6,900	9,380
Activities of head offices; management consultancy activities	70	1,020	140	1,160	950	400	1,350	2,510
Architectural and engineering activities; technical testing and analysis	71	3,470	190	3,660	1,080	440	1,520	5,180
Scientific research and development	72	1,050	30	1,080	620	110	730	1,810
Advertising and market research	73	280	260	540	260	430	690	1,230
Other professional, scientific and technical activities	74	800	60	860	460	210	670	1,520
Veterinary activities	75	520	50	570	530	290	830	1,400
Rental and leasing activities	77	1,300	240	1,540	370	320	690	2,220
Employment activities	78	4,800	1,930	6,720	3,560	2,580	6,140	12,870
Travel agency, tour operator and other reservation service and related activities	79	220	30	250	760	340	1,100	1,350
Security and investigation activities	80	3,040	970	4,010	320	290	610	4,620
Services to buildings and landscape activities	81	3,010	2,280	5,290	1,150	5,260	6,410	11,700
Office administrative, office support and other business support activities	82	3,450	930	4,380	2,170	1,120	3,290	7,660
Public administration and defence; compulsory social security	84	28,010	2,960	30,970	20,860	7,010	27,870	58,840
Education	85	12,450	5,040	17,490	23,880	33,680	57,560	75,060
Human health activities	86	9,590	3,190	12,770	30,610	29,660	60,270	73,040
Residential care activities	87	1,620	620	2,240	4,460	5,670	10,130	12,370
Social work activities without accommodation	88	3,570	1,220	4,790	13,550	14,050	27,600	32,400
Creative, arts and entertainment activities	90	220	160	370	190	260	450	830
Libraries, archives, museums and other cultural activities	91	500	140	640	730	720	1,450	2,090
Gambling and betting activities	92	680	310	990	770	530	1,310	2,290
Sports activities and amusement and recreation activities	93	2,540	2,170	4,720	1,130	2,240	3,370	8,080
Activities of membership organisations	94	2,300	1,400	3,700	1,750	2,760	4,510	8,210
Repair of computers and personal and household goods	95	200	20	220	50	40	90	310
Other personal service activities	96	510	260	770	2,020	1,890	3,910	4,680
Total		265,550	66,110	331,650	183,440	184,360	367,800	699,450

* Figures may not sum due to rounding

† See Notes to Editors, No.4

Table 1.4 N.I. Tourism and Leisure Employee Jobs^ March 2010

	SIC	Male	Female	Total
Accommodation	55	4,290	4,980	9,280
Food and beverage service activities	56*	12,860	16,410	29,270
Travel agency, tour operator and other reservation service and related activities	79	250	1,100	1,350
Libraries, archives, museums and other cultural activities	91	640	1,450	2,090
Gambling and betting activities	92	990	1,310	2,290
Sports activities and amusement and recreation activities	93	4,720	3,370	8,080
Total		23,750	28,610	52,360

^ Figures are rounded to the nearest 10 and may not sum due to rounding

* Excluding event catering and other food service activities

Unadjusted and Seasonally Adjusted Series

By Sector

4

Data are NOT adjusted for seasonality unless otherwise stated

Table 1.5 N.I. Employee Jobs* by Broad Industry Sector

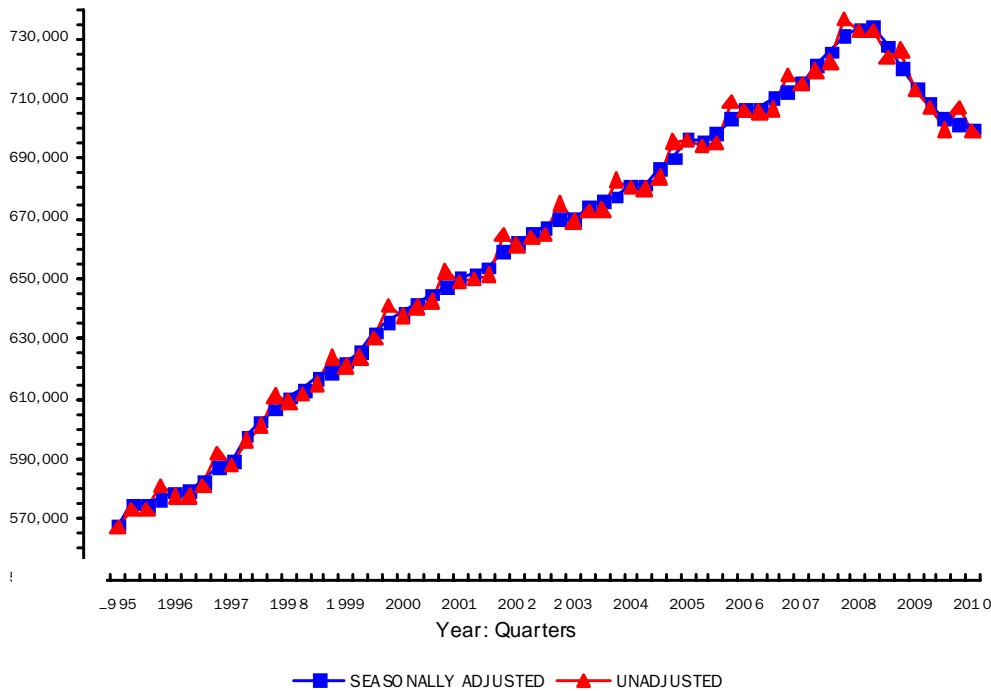
Unadjusted & Seasonally Adjusted 1995 – 2010

		Unadjusted					Seasonally Adjusted				
		Manuf.	Const.	Serv.	Other	All	Manuf.	Const.	Serv.	Other	All
1995	Mar	99,550	24,360	417,120	26,090	567,110	99,940	24,420	417,780	26,090	568,230
	Jun	101,220	24,230	421,640	26,340	573,420	101,630	24,290	422,740	26,340	575,000
	Sep	101,600	24,120	421,170	26,460	573,340	101,280	24,010	423,010	26,460	574,750
	Dec	101,960	23,770	429,270	25,990	580,990	101,480	23,760	425,580	25,990	576,800
1996	Mar	101,850	23,580	426,610	25,850	577,880	102,280	23,640	427,270	25,850	579,030
	Jun	101,490	23,180	427,730	25,250	577,640	101,850	23,250	428,930	25,250	579,280
	Sep	102,470	23,390	429,870	25,290	581,020	102,160	23,280	431,860	25,290	582,590
	Dec	103,630	23,570	439,380	25,240	591,810	103,150	23,540	435,400	25,240	587,330
1997	Mar	103,380	23,380	436,190	25,110	588,050	103,830	23,440	436,910	25,110	589,280
	Jun	104,730	27,850	438,500	25,020	596,100	105,080	27,930	439,760	25,020	597,800
	Sep	105,330	28,510	442,170	25,090	601,090	105,000	28,390	444,320	25,090	602,800
	Dec	105,050	29,090	452,830	24,350	611,330	104,590	29,030	448,570	24,350	606,540
1998	Mar	104,050	29,500	451,270	24,280	609,110	104,510	29,590	452,080	24,280	610,460
	Jun	104,120	29,940	453,530	23,950	611,530	104,430	30,020	454,810	23,950	613,210
	Sep	105,270	30,390	455,720	23,880	615,270	104,940	30,300	458,040	23,880	617,160
	Dec	104,660	30,730	464,860	23,740	623,990	104,210	30,650	460,370	23,740	618,970
1999	Mar	102,680	30,960	463,510	23,710	620,870	103,130	31,060	464,360	23,710	622,270
	Jun	102,540	31,700	466,440	23,320	624,000	102,830	31,790	467,750	23,320	625,680
	Sep	103,080	33,510	470,270	23,270	630,120	102,780	33,410	472,720	23,270	632,190
	Dec	103,070	34,360	480,250	23,390	641,070	102,650	34,250	475,590	23,390	635,880
2000	Mar	101,880	34,540	477,710	23,350	637,480	102,330	34,650	478,570	23,350	638,900
	Jun	100,910	34,940	480,910	23,620	640,390	101,150	35,030	482,220	23,620	642,020
	Sep	101,140	35,690	482,340	23,580	642,750	100,860	35,610	484,910	23,580	644,970
	Dec	101,210	35,950	491,970	23,370	652,500	100,840	35,830	487,250	23,370	647,290
2001	Mar	99,990	36,250	489,520	23,140	648,900	100,390	36,350	490,320	23,140	650,200
	Jun	98,900	36,250	492,610	22,270	650,030	99,130	36,340	493,910	22,270	651,640
	Sep	97,360	36,530	495,230	22,310	651,420	97,090	36,470	497,970	22,310	653,830
	Dec	96,250	37,150	508,880	22,390	664,660	95,950	37,020	504,020	22,390	659,370
2002	Mar	94,860	36,990	506,920	22,270	661,040	95,190	37,100	507,660	22,270	662,220
	Jun	94,510	36,740	510,490	21,890	663,630	94,730	36,820	511,750	21,890	665,190
	Sep	93,620	36,720	512,350	21,920	664,600	93,340	36,670	515,390	21,920	667,310
	Dec	92,590	36,310	524,490	21,870	675,260	92,380	36,190	519,460	21,870	669,900
2003	Mar	90,560	35,860	520,610	21,900	668,930	90,810	35,970	521,220	21,900	669,900
	Jun	88,990	36,360	524,810	22,440	672,610	89,230	36,430	526,090	22,440	674,190
	Sep	88,970	36,440	525,110	22,380	672,910	88,660	36,400	528,390	22,380	675,830
	Dec	87,940	36,750	535,520	22,640	682,850	87,800	36,620	530,420	22,640	677,470
2004	Mar	87,110	37,100	533,700	22,610	680,530	87,320	37,220	534,150	22,610	681,300
	Jun	86,080	37,180	534,340	22,290	679,900	86,330	37,230	535,630	22,290	681,480
	Sep	86,230	37,270	537,950	22,480	683,930	85,890	37,240	541,460	22,480	687,070
	Dec	85,580	37,550	549,750	22,770	695,660	85,490	37,410	544,540	22,770	690,220

		Unadjusted					Seasonally Adjusted				
		Manuf.	Const.	Serv.	Other	All	Manuf.	Const.	Serv.	Other	All
2005	Mar	84,970	37,770	550,930	22,430	696,090	85,150	37,890	551,230	22,430	696,700
	Jun	84,080	38,750	550,400	21,130	694,350	84,320	38,780	551,740	21,130	695,970
	Sep	84,520	39,310	550,270	21,310	695,420	84,170	39,290	553,950	21,310	698,720
	Dec	83,830	41,150	562,530	21,390	708,890	83,770	41,000	557,250	21,390	703,410
2006	Mar	83,730	41,790	559,080	21,390	705,990	83,900	41,940	559,300	21,390	706,530
	Jun	83,550	42,300	558,750	20,830	705,440	83,770	42,330	560,070	20,830	707,000
	Sep	84,210	42,690	559,000	20,910	706,820	83,870	42,660	562,810	20,910	710,270
	Dec	84,040	43,140	569,820	20,990	717,990	84,000	43,000	564,480	20,990	712,470
2007	Mar	83,490	43,460	566,810	21,050	714,820	83,650	43,610	567,030	21,050	715,350
	Jun	84,070	44,710	569,910	20,890	719,590	84,260	44,730	571,200	20,890	721,080
	Sep	84,280	45,320	571,390	21,070	722,060	83,990	45,290	575,280	21,070	725,630
	Dec (R)	83,790	46,290	585,150	21,300	736,520	83,730	46,140	579,710	21,300	730,880
2008	Mar (R)	83,540	45,390	582,480	21,230	732,640	83,700	45,550	582,770	21,230	733,250
	Jun (R)	83,560	44,420	583,240	21,420	732,640	83,710	44,440	584,420	21,420	733,990
	Sep (R)	82,670	43,070	576,790	21,470	724,010	82,430	43,030	580,760	21,470	727,700
	Dec (R)	80,250	41,330	583,600	21,040	726,230	80,180	41,210	578,170	21,040	720,600
2009	Mar (R)	77,700	38,920	575,240	20,930	712,790	77,840	39,070	575,640	20,930	713,470
	Jun (R)	75,170	37,540	573,590	20,810	707,110	75,290	37,560	574,620	20,810	708,280
	Sep (R)	73,940	36,070	569,170	20,700	699,880	73,760	36,030	573,110	20,700	703,600
	Dec (R)	73,870	34,590	577,950	20,650	707,040	73,790	34,480	572,570	20,650	701,490
2010	Mar (P)	73,520	33,900	571,400	20,630	699,450	73,640	34,030	571,910	20,630	700,210

*Figures may not sum due to rounding

Fig 1.4 N.I. Employee Jobs 1995-2010
Unadjusted & Seasonally Adjusted



Unadjusted and Seasonally Adjusted Series

Public / Private

5

Data are NOT adjusted for seasonality unless otherwise stated

Table 1.6 N.I. Employee Jobs[^] by Public and Private Sector

Unadjusted & Seasonally Adjusted 2001 – 2010

		Unadjusted		Seasonally*	
		Public	Private	Public	Private
2001	Mar	202,180	446,720	201,572	448,680
	Jun	202,559	447,470	202,414	449,310
	Sep	200,977	450,450	202,164	451,730
	Dec	203,409	461,250	202,984	456,210
2002	Mar	205,106	455,930	204,457	457,800
	Jun	205,091	458,540	204,984	460,220
	Sep	205,912	458,690	207,091	460,360
	Dec	209,324	465,940	208,933	460,840
2003	Mar	210,851	458,080	210,136	459,760
	Jun	211,390	461,220	211,320	462,820
	Sep	211,910	461,000	213,077	462,910
	Dec	214,321	468,530	213,977	463,420
2004	Mar	216,275	464,250	215,506	465,770
	Jun	213,940	465,960	213,860	467,590
	Sep	216,325	467,600	217,537	469,620
	Dec	218,265	477,390	217,942	472,250
2005	Mar	219,525	476,560	218,688	478,030
	Jun	219,975	474,380	219,870	476,070
	Sep	219,491	475,930	220,835	477,870
	Dec	221,286	487,610	220,907	482,490
2006	Mar	221,542	484,450	220,653	485,960
	Jun	220,980	484,460	220,812	486,170
	Sep	219,524	487,290	221,098	489,100
	Dec	220,683	497,310	220,166	492,230
2007	Mar	221,215	493,610	220,270	495,280
	Jun	221,101	498,490	220,915	500,160
	Sep	217,789	504,270	219,590	505,900
	Dec	(R) 220,882	515,640	220,181	510,520
2008	Mar	(R) 221,489	511,150	220,513	513,110
	Jun	(R) 219,837	512,800	219,627	514,370
	Sep	(R) 215,770	508,240	217,794	509,660
	Dec	(R) 223,386	502,840	222,484	498,010
2009	Mar	(R) 224,744	488,050	223,721	490,100
	Jun	(R) 224,748	482,360	224,558	483,690
	Sep	(R) 222,051	477,830	224,295	479,010
	Dec	(R) 226,319	480,720	225,251	476,260
2010	Mar	(P) 225,494	473,960	224,468	476,030

Seasonally Adjusted Data*

The NI Public sector seasonally adjusted employee jobs estimate currently stands at 224,468. This represents a decrease of 0.3% (-783 jobs) over the quarter between December 2009 and March 2010 and an increase since March 2009 of 0.3% (+747 jobs).

The private sector employee jobs estimate at March 2010 was 476,030. This is down on the previous quarter estimate by 0.05% (-230 jobs) and also down on the previous year by 2.9% (-14,070 jobs).

Unadjusted Data

Further analysis of the Public Sector can be obtained by looking at the seasonally unadjusted data. The NI public sector unadjusted employee jobs estimate for March 2010 stands at 225,494. This represents a decline of 0.4% (-825 jobs) over the quarter and an increase of 0.3% (+750 jobs) over the year from March 2009.

The largest decline over the quarter (-556 jobs) came from the Central Government section of the public sector with the majority of that decline within the NHS Trusts (-405 jobs). UK based public corporations also declined over the quarter by 383 jobs.

In the 5 years to March 2010, the NI public sector increased by 2.7% (+5,969 jobs), while the private sector decreased over the same period by 0.5% (-2,600 jobs).

*Seasonally Adjusted Public and Private split may not sum to the Seasonally Adjusted total reported in Section 4. Also, rounding may have an effect on the sum.

Figure 1.5 – Public Sector Employee Jobs Seasonally Adjusted & Unadjusted 2001 – 2010

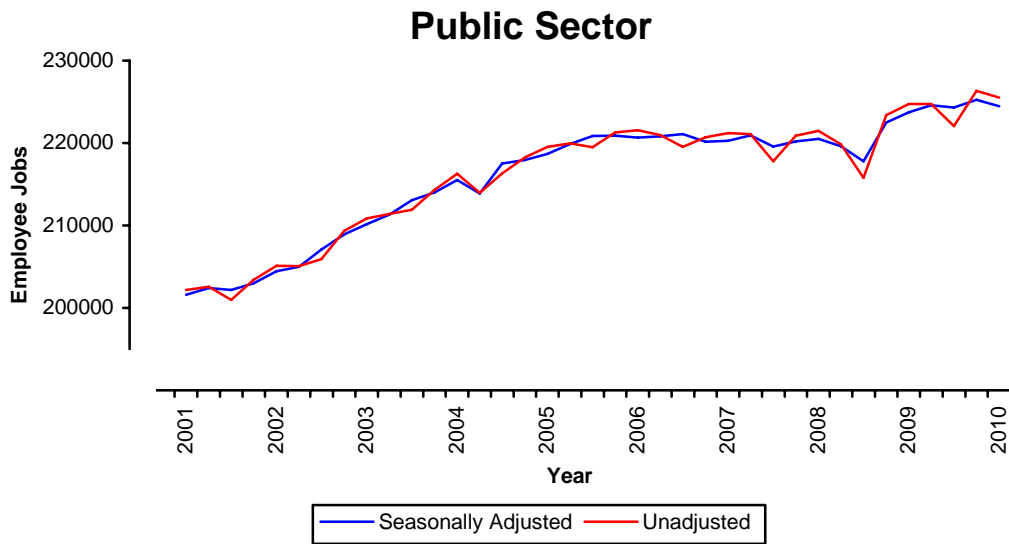


Figure 1.6 – Private Sector Employee Jobs Seasonally Adjusted & Unadjusted 2001 – 2010

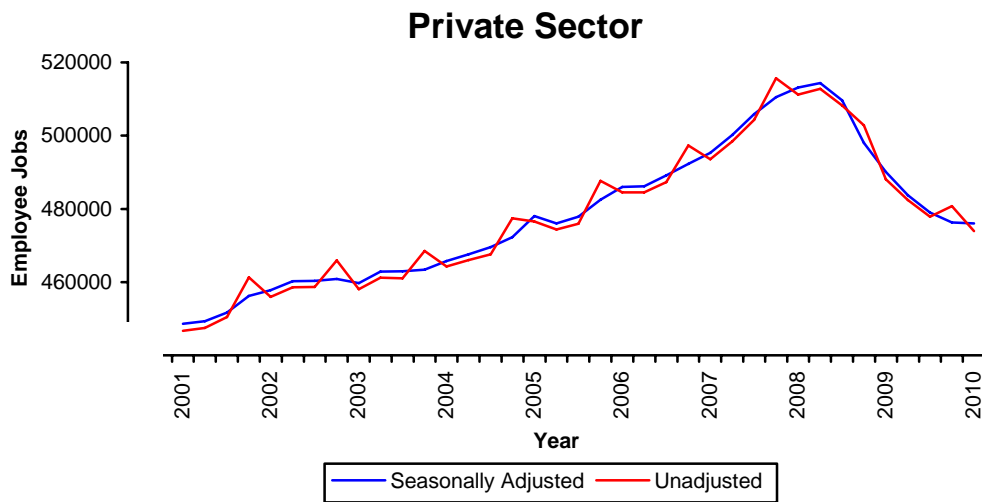
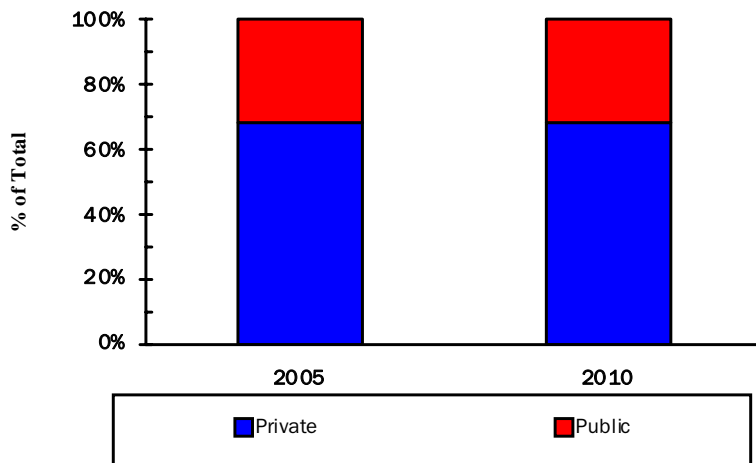


FIG 1.7 Seasonally Adjusted Employee Jobs, Public / Private Split, March 2005 & March 2010



The opposite table shows the structure of employee jobs has not changed over the past 5 years with the public sector accounting for 31.4% of all employee jobs in March 2005 rising slightly to 32.0% in March 2010.

At the peak of employee jobs in June 2008, the public sector accounted for less than 30% of all employee jobs (29.9%).

Public Sector Data

By Section Department

6

Data are NOT adjusted for seasonality unless otherwise stated

Table 1.7 N.I. Public Sector Employee Jobs by Section December 2009 & March 2010

	December 2009 (Revised)			March 2010 (Provisional)		
	Male	Female	Total	Male	Female	Total
NI CENTRAL GOVERNMENT	38,848	76,964	115,812	38,726	76,530	115,256
Office of the First and Deputy First Minister	180	232	412	171	225	396
Department of Agriculture and Rural Development (DARD)	2,428	1,504	3,932	2,430	1,496	3,926
Department for Culture, Arts and Leisure (DCAL)	143	143	286	147	140	287
Department of Enterprise, Trade and Investment (DETI)	321	328	649	313	330	643
Department of Education (DE)	253	398	651	249	396	645
Department of Environment (DOE)	1,509	1,421	2,930	1,507	1,424	2,931
Department of Finance and Personnel (DFP)	1,864	1,615	3,479	1,861	1,615	3,476
Department for Employment and Learning (DEL)	658	1,360	2,018	668	1,364	2,032
Department of Regional Development (DRD)	1,963	598	2,561	1,935	599	2,534
Department for Social Development (DSD)	3,316	4,691	8,007	3,308	4,665	7,973
Department of Health, Social Services and Public Safety (DHSSPS)	417	429	846	399	422	821
Total of 11 Government Departments (Northern Ireland Civil Service)	13,052	12,719	25,771	12,988	12,676	25,664
Fire Service	2,047	239	2,286	2,058	238	2,296
NI Audit Office	75	68	143	76	67	143
Northern Ireland Assembly	273	185	458	276	197	473
Northern Ireland Office	833	1,399	2,232	843	1,401	2,244
Parliamentary Commissioner for Administration & Complaints	8	16	24	10	19	29
Prison Service	1,528	455	1,983	1,513	447	1,960
Police Service of Northern Ireland	7,209	3,698	10,907	7,152	3,706	10,858
NHS Trusts	13,367	57,809	71,176	13,363	57,408	70,771
British Broadcasting Corporation (BBC)	420	345	765	411	340	751
Assets Recovery Agency	36	31	67	36	31	67
BODIES UNDER AEGIS OF NI CENTRAL GOVERNMENT	20,673	60,860	81,533	20,680	61,185	81,865
Office of the First and Deputy First Minister	105	172	277	109	175	284
Department of Agriculture and Rural Development (DARD)	30	40	70	30	40	70
Department for Culture, Arts and Leisure (DCAL)	366	456	822	368	456	824
Department of Enterprise, Trade and Investment (DETI)	384	551	935	385	552	937
Department of Education (DE)	188	337	525	192	343	535
Department of Finance and Personnel (DFP)	143	187	330	166	205	371
Department for Employment and Learning (DEL)	421	421	842	418	410	828
Department of Regional Development (DRD)	1,138	243	1,381	1,149	243	1,392
Department of Health, Social Services and Public Safety (DHSSPS)	823	1,451	2,274	826	1,441	2,267
Department for Social Development (DSD)	1,671	1,666	3,337	1,658	1,654	3,312
Northern Ireland Office	314	524	838	312	530	842
Teaching Staff; Non-Teaching Staff & Education and Library Boards	15,090	54,812	69,902	15,067	55,136	70,203
UK CENTRAL GOVERNMENT	2,729	3,091	5,820	2,718	3,025	5,743
LOCAL GOVERNMENT (District Councils)	6,906	4,755	11,661	6,843	4,764	11,607
PUBLIC CORPORATIONS	8,557	2,936	11,493	8,225	2,798	11,023
NI Based	4,746	2,223	6,969	4,705	2,177	6,882
UK Based	3,811	713	4,524	3,520	621	4,141
Total	77,713	148,606	226,319	77,192	148,302	225,494

Special Feature

7

Data are NOT adjusted for seasonality unless otherwise stated

Between March 2000 and March 2010 the total number of employee jobs in NI has risen by 61,980 (9.7%). Fig 1.8 illustrates the change in employee job levels over the past 10 years in each of the main industry sectors. It is noticeable that the changes in Manufacturing (-28,360), Construction (-640) and Other Industries (-2,720) are relatively small compared to the large increase in Service Sector jobs (+93,690). Indeed, the increase in Services alone accounts for the total increase in employee jobs during the period.

Fig 1.8 Employee jobs by Main Industry Sector, March 2000 & March 2010

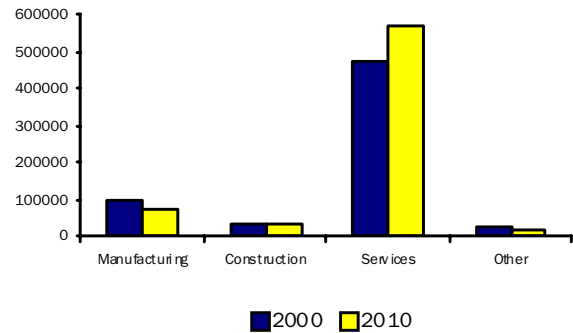


FIG 1.9 - CHANGES IN SERVICE SECTOR JOBS MARCH 2000 - MARCH 2010

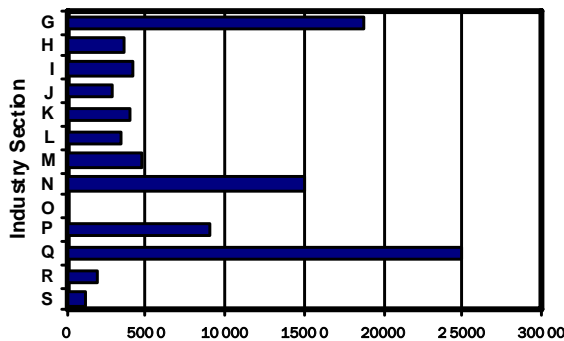


Fig 1.9 shows the change in Service Sector jobs in more detail. It indicates that the largest increases have occurred in Human health and social work activities (+24,920), Wholesale and retail trade; repair of motor vehicles and motorcycles (+18,720), Administrative and Support Service Activities (+15,010), Education (+9,080), Professional, Scientific and Technical Activities (+4,750). The rise in these five industry sections accounts for over three quarters (77.3%) of the total increase in employee jobs in the service sector during the last ten years.

The increase in Human Health & Social Work Activities was largely due to an increase of 15,570 in Human Health Activities, with smaller increases occurring in Social Work Activities without Accommodation (+6,510) and in Residential Care Activities (+2,840).

The majority of the increase in Wholesale and Retail Trade; Repair Of Motor Vehicles And Motorcycles has occurred in Retail Trade, Except Of Motor Vehicles And Motorcycles (+18,080) with a smaller increase in this industry section occurring in the Wholesale and Retail Trade And Repair Of Motor Vehicles And Motorcycles (+1,400). There has however, been a decline in Wholesale Trade, Except Of Motor Vehicles And Motorcycles (-770).

SIC 2007	SIC 2007 Description
G	Wholesale and retail trade; repair of motor vehicles and motorcycles
H	Transportation and storage
I	Accommodation and food service activities
J	Information and communication
K	Financial and insurance activities
L	Real estate activities
M	Professional, scientific and technical activities
N	Administrative and support service activities
O	Public administration and defence; compulsory social security
P	Education
Q	Human health and social work activities
R	Arts, entertainment and recreation
S	Other service activities

Notes to Editors

8

Note 1

Estimates of the number of employee jobs are obtained from the Quarterly Employment Survey (QES). The QES covers all public sector bodies, all private sector firms with 25 or more employees and a sample of the remainder. The sample size is such that estimates of total employee jobs should be accurate to within +/- 1% of the Census of Employment total. The survey collects information on numbers of persons in full-time and part-time employment. It should be noted that the survey counts the number of jobs rather than the number of persons with jobs. For example, a person holding both a full-time job and a part-time job, or someone with two part-time jobs, will be counted twice.

The QES is a voluntary survey of employers in Northern Ireland and results from it are collated into industry classes using the 2007 Standard Industrial Classification (SIC07).

Note 2

It is normal practice for Quarterly Employment Survey estimates to be revised. All quarters back to the latest published Census of Employment (currently Q4 2007 onwards) are provisional and subject to revision in light of (a) late responses to surveys and administrative sources, (b) where cross survey congruence checks provide more accurate data and (c) there are revisions to seasonal adjustment factors which are re-estimated every quarter. A common pitfall in interpreting series is that expectations of accuracy and reliability in early estimates are often too high. Revisions are an inevitable consequence of the trade off between timeliness and accuracy. Early estimates are based on incomplete data.

Very few statistical revisions arise as a result of 'errors' in the popular sense of the word. All estimates, by definition, are subject to statistical 'error' but in this context the word refers to the uncertainty inherent in any process or calculation that uses sampling, estimation or modelling. Most revisions reflect either the adoption of new statistical techniques, or the incorporation of new information, which allows the statistical error of previous statements to be reduced. Only rarely are there avoidable 'errors' such as human or system failures, and such mistakes are made quite clear when they do occur.

A QES Revisions policy and tables including summary information on the size and direction of revisions for the Quarterly Employment Survey are available under the following link:

http://www.detini.gov.uk/deti-stats-index/stats-surveys/stats-qes/revisions_to_qes_estimates.htm

Note 3

The quarterly survey covers all Industrial Sections apart from Agriculture. Overall employment (i.e. employees and the self-employed) estimates for the agricultural sector are provided, on an annual basis, from the Department of Agriculture and Rural Development's (DARD) Farm Census. Self-employed agriculture workers are defined as including full-time farmers and partners on all agricultural businesses. Agriculture employees include all workers on agricultural businesses other than (a) part-time farmers and partners and (b) farmers' spouses. They include full-time, part-time and casual workers, both paid and unpaid.

Note 4

Public sector jobs comprise Central Government (including Bodies under the aegis of Central Government), Local Government and Public Corporations. An announcement in April 1993 transferred National Health Service Trusts from 'Bodies under the aegis of Central Government' to 'Public Corporations'. A subsequent announcement by the Public Sector Classification Committee (PSCC) in July 2003 stated that all NHS Trusts should retrospectively be reclassified to Central Government. In addition, following advice from PSCC, Northern Ireland Housing Executive employees were reclassified from SIC 75 to SIC 70 in December 2006. This change applies to each quarter from Quarter 1 2004 onwards. From 1st April 2007, The Water Service became a Government owned company known as "Northern Ireland Water". As a result its employees have been transferred from "NI Central Government" to "Bodies under the Aegis of NI Central Government". In October 2008, the Royal Bank of Scotland and its subsidiaries were reclassified into the Public Sector.

Note 5

A seasonally adjusted employment series provides a better indication of underlying trends in employment. This series is available on a consistent basis from June 1978 onwards and figures by main industrial sector from 1994 onwards are shown in Table 1.6.

Note 6

Information on employee jobs at a sub Northern Ireland level (e.g. District Council Area (DCA), Parliamentary Constituency Area (PCA), Ward Level) and at the 5-digit SIC03 level are available from the Northern Ireland Census of Employment. Details of the Census of Employment results are available from Statistics Research Branch Tel: (028) 9052 9379 or on our Internet website <http://www.detini.gov.uk/deti-stats-index.htm>

Note 7

QES employee jobs estimates feed into UK wide workforce jobs figures. These in turn are used as the denominator for regional productivity measures. As part of the NI programme for government, a public sector agreement (PSA) target has been set for Northern Ireland to halve the private sector productivity gap with the UK (excluding the Greater South East) by 2015. See following link:

<http://www.pfgbudgetni.gov.uk/finalpfg.pdf> (p10).

Details of progress towards this target can be found at: www.pfgbudgetni.gov.uk/pfg_delivery_report_q4_08_09-final_-_pdf_version-5.pdf