

Quarterly Employment Survey

5

Seasonally Adjusted

The September 2010 seasonally adjusted employee jobs figure stands at 697,630.

This represents a seasonally adjusted decrease of 0.1% (or 940 jobs) from the revised June 2010 estimate of 698,570.

Over the quarter seasonally adjusted employee jobs decreased in the Service Sector by 0.1% (410 jobs), and also in the Construction Sector by 2.0% (690 jobs). Seasonally adjusted employee jobs increased in the Manufacturing sector by 0.2% (110 jobs), and also in Other Industries by 0.2% (40 jobs) over the quarter.

Unadjusted

The September 2010 seasonally unadjusted figure stands at 694,130.

This represents a decrease of 0.4% (3,090 jobs) since June 2010 and a decrease of 0.8% (5,260 jobs) in the past year.

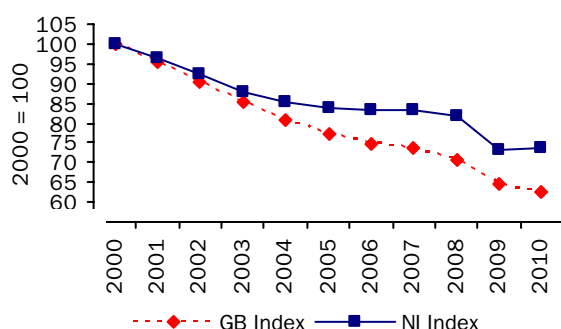
Over the year, September 2009 to September 2010, the unadjusted employee jobs figure for Construction decreased by 8.5% (3,100 jobs), while employee jobs in the Service Sector decreased by 0.5% (2,680 jobs). Manufacturing employee jobs increased by 0.6% (470 jobs) over the year.

Manufacturing Employee Jobs

The level of jobs in the Manufacturing sector in both NI and GB has declined significantly over the past 10 years.

Manufacturing jobs for NI & GB indexed (September of each year*)

Figure 11



*GB figures for 2010 refer to June 2010

NI manufacturing jobs recorded a marked decline between 2000 and 2005, with the figure for 2005 falling to 84% of the 2000 figure. Manufacturing employee jobs in NI were fairly stable between 2005 and 2007, with the 2007 figure at 83% of the 2000 level. However manufacturing jobs have fallen again between 2007 and 2009 reaching 73% of their 2000 level. Manufacturing jobs in 2010 have increased slightly and now stand at 74% of the 2000 level.

Manufacturing jobs in GB have been in sharp decline from 2000 and the 2010 estimate stands at 63% of the 2000 level.

Changes in the Structure of Manufacturing Jobs (NI)

Over the period 2000-2010, Manufacturing jobs in NI decreased by 26,720, with 19 of the 23 manufacturing divisions recording a decrease. The largest decrease occurred in the Manufacture of wearing apparel, which recorded 7,930 fewer jobs. There were 5,640 fewer jobs in the Manufacture of computer, electronic and optical products, 5,560 fewer in the Manufacture of textiles, 1,790 fewer in the Manufacture of other transport equipment and 1,710 fewer in the Manufacture of motor vehicles, trailers and semi-trailers.

However, these decreases were partially offset by increases in the Manufacture of fabricated metal products, except machinery and equipment (830), in the Manufacture of basic pharmaceutical products and pharmaceutical preparations (640) and in the Repair and installation of machinery and equipment (140).

The large decline in the Manufacture of Textiles and Wearing Apparel sectors has impacted on the structure of Northern Ireland Manufacturing jobs. In 2000 16.0% of Manufacturing jobs were located in the Textiles and Wearing Apparel sectors; by 2010 this had fallen to 3.2%.

Quarterly Employment Survey
Northern Ireland Seasonally Adjusted Employee Jobs* September 2010
Table 10

	Males	Females	All persons	% change in total	
				since last quarter	since last year
Manufacturing	58,230	15,970	74,200	0.2	0.7
Construction ¹	29,540	3,930	33,470	-2.0	-8.5
Services	227,970	342,210	570,190	-0.1	-0.5
Other ²	17,040	2,730	19,770	0.2	0.3
Total	332,780	364,850	697,630	-0.1	-0.7

¹ Figures for females in the construction industry are not seasonally adjusted

² Covers Industry Sections A, B, D and E which have not been seasonally adjusted

* Figures are rounded to the nearest 10 and may not sum due to rounding

Northern Ireland Employee Jobs* - Seasonally Adjusted Series
Table 11

		Manufacturing	Construction ¹	Services	Other Industries ²	All Industries	Public ³	Private ³
2004	March	87,340	37,200	534,170	22,610	681,330	215,523	465,790
	June	86,310	37,220	535,690	22,290	681,520	213,835	467,580
	September	85,890	37,250	541,350	22,480	686,970	217,516	469,580
	December	85,500	37,420	544,560	22,770	690,250	217,968	472,270
2005	March	85,180	37,870	551,240	22,430	696,720	218,737	478,050
	June	84,290	38,770	551,850	21,130	696,050	219,802	476,080
	September	84,160	39,310	553,790	21,310	698,570	220,811	477,810
	December	83,780	41,010	557,290	21,390	703,470	220,951	482,510
2006	March	83,940	41,910	559,290	21,390	706,530	220,729	485,970
	June	83,740	42,310	560,220	20,830	707,100	220,706	486,200
	September	83,850	42,690	562,640	20,910	710,100	221,056	489,050
	December	84,010	43,010	564,510	20,990	712,520	220,253	492,200
2007	March	83,720	43,580	567,000	21,050	715,350	220,360	495,290
	June	84,220	44,710	571,400	20,890	721,230	220,754	500,250
	September	83,950	45,330	575,100	21,070	725,440	219,550	505,890
	December	83,530	46,670	578,060	20,330	728,590	219,444	508,970
2008	March	83,590	45,940	581,380	20,250	731,160	219,953	511,630
	June	83,450	44,780	583,070	20,440	731,740	218,487	513,050
	September	82,160	43,410	578,850	20,490	724,900	216,411	508,400
	December	79,950	41,450	576,170	20,040	717,610	221,610	495,950
2009	March	77,820	39,390	573,710	19,940	710,860	222,528	488,660
	June	75,170	38,050	573,370	19,850	706,430	223,191	482,960
	September	73,710	36,580	572,870	19,710	702,870	223,936	478,890
	December	73,780	35,280	573,230	19,720	702,010	224,340	477,750
2010	March	73,570	34,870	572,060	19,710	700,210	223,727	476,670
	June	74,090	34,160	570,600	19,730	698,570	223,128	475,220
	September	74,200	33,470	570,190	19,770	697,630	221,965	475,650

¹ Figures for females in the construction industry are not seasonally adjusted

² Covers Industry Sections A, B, D and E which have not been seasonally adjusted

³ Public and Private splits may not sum to total.

* Figures are rounded to the nearest 10 and may not sum due to rounding

Quarterly Employment Survey (QES) – Sample of data available on website

The Northern Ireland Quarterly Employment Survey

Table 12

Table Name	Description	File Size
5.1	NI Employee Jobs - Seasonally Adjusted September 2010	15.5 KB
5.2	NI Employee Jobs - Seasonally Adjusted 1998 – 2010	15.5 KB
5.3	NI Employee Jobs - Unadjusted 1998 – 2010	15.5 KB
5.4	NI Employee Jobs (Unadjusted) by Industry Section – September 2010	15.5 KB
5.5	NI Public Sector Jobs (Unadjusted) – September 2010	13.5 KB
5.6	NI Employee Jobs by Industry Section (Unadjusted) September 2009, June 2010 and September 2010	15.5 KB
5.7	Self Employment Jobs in NI by Broad Industry Group (June of Each Year)	15.0 KB
5.8	Workforce in Employment 1983 – 2010	15.0 KB
5.9	NI Employee Jobs by 2-digit SIC07 Class – September 2010	31.5 KB

Other Quarterly Employment Survey Publications available on website

Table 13

Publication title	File Size
Quarterly Employment Survey (QES) Supplement - September 2010	493 KB