

Quarterly Employment Survey

5

Seasonally Adjusted

The March 2010 seasonally adjusted employee jobs figure stands at 700,210.

This represents a seasonally adjusted decrease of 0.2% (or 1,280 jobs) from the revised December 2009 estimate of 701,490.

Over the quarter seasonally adjusted employee jobs decreased in the Manufacturing Sector by 0.2% (150 jobs), in the Service Sector by 0.1% (660 jobs) while employee jobs in the Construction Sector fell by 1.3% (460 jobs).

Unadjusted

The March 2010 seasonally unadjusted figure stands at 699,450.

This represents a decrease of 1.1% (or 7,590 jobs) from December 2009 and a decrease of 1.9% (13,340 jobs) in the past year.

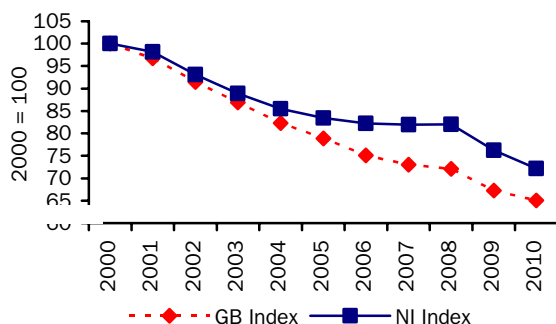
Over the year, March 2009 to March 2010, the unadjusted employee jobs figure for Construction decreased by 12.9% (5,020 jobs), Manufacturing employee jobs decreased by 5.4% (4,170 jobs) while employee jobs in the Service Sector decreased by 0.7% (3,840 jobs).

Manufacturing Employee Jobs

The level of jobs in the Manufacturing sector in both NI and GB has declined significantly over the past 10 years.

Manufacturing jobs for NI & GB indexed (March of each year*)

Figure 11



*GB figures for 2010 refer to December 2009

NI manufacturing jobs recorded a marked decline between 2000 and 2006, with the figure for 2006 falling to 82% of the 2000 figure. Manufacturing employee jobs in NI were fairly stable between 2006 and 2008, with the 2008 figure remaining at 82% of the 2000 level. However manufacturing jobs have fallen again in 2010 to 72% of their 2000 level.

Manufacturing jobs in GB have been in sharp decline from 2000 and the 2010 estimate stands at 65% of the 2000 level.

Changes in the Structure of Manufacturing Jobs (NI)

Over the period 2000-2010, Manufacturing jobs in NI decreased by 28,360, with 19 of the 23 manufacturing divisions recording a decrease. The largest decrease occurred in the Manufacture of wearing apparel, which recorded -9,640 fewer jobs. There were -5,610 fewer jobs in the Manufacture of textiles, -4,740 fewer in the Manufacture of computer, electronic and optical products, -1,830 fewer in the Manufacture of other transport equipment and -1,720 fewer in the Manufacture of motor vehicles, trailers and semi-trailers.

However, these decreases were partially offset by increases in the Manufacture of basic pharmaceutical products and pharmaceutical preparations (560), in the Manufacture of fabricated metal products, except machinery and equipment (320) and in the Repair and installation of machinery and equipment (90).

The large decline in the Manufacture of Textiles and Wearing Apparel sectors has impacted on the structure of Northern Ireland Manufacturing jobs. In 2000 17.6% of Manufacturing jobs were located in the Textiles and Wearing Apparel sectors; by 2010 this had fallen to 3.3%.

Quarterly Employment Survey
Northern Ireland Seasonally Adjusted Employee Jobs* March 2010
Table 10

				% change in total	
	Males	Females	All persons	since last quarter	since last year
Manufacturing	57,500	16,150	73,640	-0.2	-5.4
Construction ¹	29,990	4,040	34,030	-1.3	-12.9
Services	226,970	344,940	571,910	-0.1	-0.6
Other ²	17,850	2,780	20,630	-0.1	-1.4
Total	332,310	367,910	700,210	-0.2	-1.9

¹ Figures for females in the construction industry are not seasonally adjusted

² Covers Industry Sections A, B, D and E which have not been seasonally adjusted

* Figures are rounded to the nearest 10 and may not sum due to rounding

Northern Ireland Employee Jobs* - Seasonally Adjusted Series
Table 11

		Manufacturing	Construction ¹	Services	Other Industries ²	All Industries	Public ³	Private ³
2004	March	87,320	37,220	534,150	22,610	681,300	215,506	465,770
	June	86,330	37,230	535,630	22,290	681,480	213,860	467,590
	September	85,890	37,240	541,460	22,480	687,070	217,537	469,620
	December	85,490	37,410	544,540	22,770	690,220	217,942	472,250
2005	March	85,150	37,890	551,230	22,430	696,700	218,688	478,030
	June	84,320	38,780	551,740	21,130	695,970	219,870	476,070
	September	84,170	39,290	553,950	21,310	698,720	220,835	477,870
	December	83,770	41,000	557,250	21,390	703,410	220,907	482,490
2006	March	83,900	41,940	559,300	21,390	706,530	220,653	485,960
	June	83,770	42,330	560,070	20,830	707,000	220,812	486,170
	September	83,870	42,660	562,810	20,910	710,270	221,098	489,100
	December	84,000	43,000	564,480	20,990	712,470	220,166	492,230
2007	March	83,650	43,610	567,030	21,050	715,350	220,270	495,280
	June	84,260	44,730	571,200	20,890	721,080	220,915	500,160
	September	83,990	45,290	575,280	21,070	725,630	219,590	505,900
	December	83,730	46,140	579,710	21,300	730,880	220,181	510,520
2008	March	83,700	45,550	582,770	21,230	733,250	220,513	513,110
	June	83,710	44,440	584,420	21,420	733,990	219,627	514,370
	September	82,430	43,030	580,760	21,470	727,700	217,794	509,660
	December	80,180	41,210	578,170	21,040	720,600	222,484	498,010
2009	March	77,840	39,070	575,640	20,930	713,470	223,721	490,100
	June	75,290	37,560	574,620	20,810	708,280	224,558	483,690
	September	73,760	36,030	573,110	20,700	703,600	224,295	479,010
	December	73,790	34,480	572,570	20,650	701,490	225,251	476,260
2010	March	73,640	34,030	571,910	20,630	700,210	224,468	476,030

¹ Figures for females in the construction industry are not seasonally adjusted

² Covers Industry Sections A, B, D and E which have not been seasonally adjusted

³ Public and Private sector seasonal adjusted totals will not sum to the all industries total due to seasonal adjustment methodology.

* Figures are rounded to the nearest 10 and may not sum due to rounding

Quarterly Employment Survey (QES) – Sample of data available on website

The Northern Ireland Quarterly Employment Survey

Table 12

Table Name	Description	File Size
5.1	NI Employee Jobs - Seasonally Adjusted March 2010	15.5 KB
5.2	NI Employee Jobs - Seasonally Adjusted 1998 – 2010	15.5 KB
5.3	NI Employee Jobs - Unadjusted 1998 – 2010	15.5 KB
5.4	NI Employee Jobs (Unadjusted) by Industry Section – March 2010	15.5 KB
5.5	NI Public Sector Jobs (Unadjusted) – March 2010	13.5 KB
5.6	NI Employee Jobs by Industry Section (Unadjusted) March 2009, December 2009 and March 2010	15.5 KB
5.7	Self Employment Jobs in NI by Broad Industry Group (June of Each Year)	15.0 KB
5.8	Workforce in Employment 1983 – 2009	15.0 KB
5.9	NI Employee Jobs by 2-digit SIC07 Class – March 2010	31.5 KB

Other Quarterly Employment Survey Publications available on website

Table 13

Publication title	File Size
Quarterly Employment Survey (QES) Supplement - March 2010	493 KB