

Quarterly Employment Survey

5

Important Notice : Due to revisions in the QES sampling methodology, a discontinuity in the jobs series exists for all estimates from Q3 2009 onwards. For more details please follow link : <http://www.detini.gov.uk/deti-stats-index/stats-surveys/stats-qes-discontinuity -notice.htm>

Seasonally Adjusted

The March 2011 seasonally adjusted employee jobs figure stands at 703,860.

This represents a seasonally adjusted increase of 0.1% (or 590 jobs) from the revised December 2010 estimate of 703,280.

Over the quarter seasonally adjusted employee jobs increased in the Service Sector by 0.2% (870 jobs). The Manufacturing sector decreased over the quarter by 0.2% (160 jobs), while the Construction sector also decreased by 0.2% (60 jobs). Other Industries decreased over the quarter by 0.3% (60 jobs).

Unadjusted

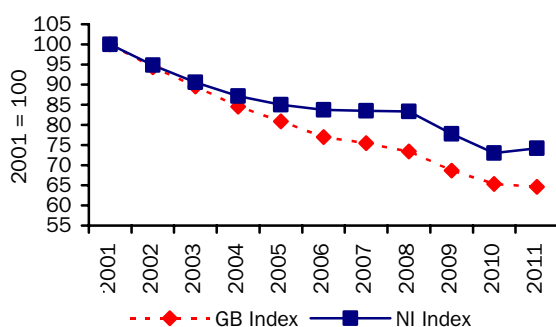
The March 2011 seasonally unadjusted figure stands at 702,870.

This represents a decrease of 0.8% (or 5,520 jobs) from December 2010 and a decrease of 1.0% (6,880 jobs) in the past year.

Over the year, March 2010 to March 2011, the unadjusted employee jobs figure for Construction decreased by 9.5% (3,500 jobs), Service Sector employee jobs decreased by 0.7% (4,210 jobs) and Manufacturing employee jobs increased by 1.6% (1,200 jobs).

Manufacturing jobs for NI & GB indexed (March of each year*)

Figure 11



*GB figures for 2011 refer to December 2010

Manufacturing Employee Jobs

The level of jobs in the Manufacturing sector in both NI and GB has declined significantly over the past 10 years.

NI manufacturing jobs recorded a marked decline between 2001 and 2006, with the figure for 2006 falling to 84% of the 2001 figure. Manufacturing employee jobs in NI were fairly stable between 2006 and 2008, with the 2008 figure at 83% of the 2001 level. However manufacturing jobs have fallen again between 2008 and 2010 reaching 73% of their 2001 level. Manufacturing jobs in 2011 have increased slightly and now stand at 74% of the 2001 level.

Manufacturing jobs in GB have been in sharp decline from 2001 and the 2011 estimate stands at 65% of the 2001 level.

Changes in the Structure of Manufacturing Jobs (NI)

Over the period 2001-2011, Manufacturing jobs in NI decreased by 25,810, with 18 of the 23 manufacturing divisions recording a decrease. The largest decrease occurred in the Manufacture of wearing apparel, which recorded 6,770 fewer jobs. There were 6,080 fewer jobs in the Manufacture of computer, electronic and optical products, 4,740 fewer in the Manufacture of textiles, 1,810 fewer in the Manufacture of motor vehicles, trailers and semi-trailers and 1,720 fewer in the Manufacture of other transport equipment.

However, these decreases were partially offset by increases in the Manufacture of fabricated metal products, except machinery and equipment (1,080), in the Manufacture of basic pharmaceutical products and pharmaceutical preparations (650) and also in the Repair and installation of machinery and equipment (350).

The large decline in the Manufacture of Textiles and Wearing Apparel sectors has impacted on the structure of Northern Ireland Manufacturing jobs. In 2001 14.6% of Manufacturing jobs were located in the Textiles and Wearing Apparel sectors; by 2011 this had fallen to 3.7%.

Quarterly Employment Survey
Northern Ireland Seasonally Adjusted Employee Jobs* March 2011
Table 10

	Males	Females	All persons	% change in total	
				since last quarter	since last year
Manufacturing	58,340	16,070	74,410	-0.2	1.6
Construction ¹	29,260	4,270	33,530	-0.2	-9.5
Services	231,240	345,240	576,480	0.2	-0.7
Other ²	16,700	2,730	19,430	-0.3	-1.8
Total	335,530	368,320	703,850	0.1	-1.0

¹ Figures for the construction industry are not seasonally adjusted

² Covers Industry Sections A, B, D and E which have not been seasonally adjusted

* Figures are rounded to the nearest 10 and may not sum due to rounding

Northern Ireland Employee Jobs* - Seasonally Adjusted Series
Table 11

		Manufacturing	Construction ¹	Services	Other Industries ²	All Industries	Public ³	Private ³
2005	March	85,260	37,770	551,230	22,430	696,690	218,630	477,920
	June	84,170	38,750	551,860	21,130	695,910	219,690	476,170
	September	84,220	39,310	553,730	21,310	698,570	221,050	478,010
	December	83,760	41,150	557,370	21,390	703,660	220,950	482,350
2006	March	84,020	41,790	559,330	21,390	706,530	220,590	485,770
	June	83,630	42,300	560,100	20,830	706,860	220,650	486,330
	September	83,900	42,690	562,630	20,910	710,130	221,170	489,440
	December	83,990	43,140	564,600	20,990	712,720	220,340	491,880
2007	March	83,770	43,460	567,140	21,050	715,420	220,230	495,040
	June	84,150	44,710	571,090	20,890	720,850	220,720	500,350
	September	83,970	45,320	575,150	21,070	725,520	219,540	506,500
	December	83,480	46,820	578,830	20,170	729,300	219,630	508,940
2008	March	83,600	45,860	582,910	20,150	732,510	219,860	512,600
	June	83,470	44,860	584,480	20,370	733,170	218,430	515,040
	September	82,260	43,500	581,390	20,440	727,580	216,290	511,820
	December	80,140	41,670	579,440	20,040	721,280	223,910	496,670
2009	March	78,040	39,420	577,670	19,960	715,090	224,450	490,550
	June	75,430	38,210	577,040	19,910	710,590	225,040	485,750
	September	74,040	36,780	577,720	19,800	708,340	225,610	483,320

DISCONTINUITY IN SERIES – PLEASE SEE NOTE AT BEGINNING OF SECTION 5

	December [^]	73,560	37,210	581,540	19,810	712,130	226,560	484,890
2010	March	73,210	37,040	580,650	19,800	710,690	225,560	485,010
	June	73,100	36,260	580,540	19,540	709,440	224,840	484,770
	September	73,510	35,820	579,350	19,520	708,210	223,880	484,990
	December	74,580	33,590	575,610	19,490	703,280	223,480	479,130
2011	March	74,410	33,530	576,480	19,430	703,860	222,940	480,730

¹ Figures for the construction industry are not seasonally adjusted

² Covers Industry Sections A, B, D and E which have not been seasonally adjusted

³ Public and Private splits may not sum to total.

[^] Please note that there are a number of factors influencing the figure for December 2009: a) Discontinuity in series; b) Re-Allocation of sample; c) A real effect; d) For the Seasonally adjusted figure, each of the previous factors will have an impact on the Seasonal Adjustment software. For more information on any of these, please refer to Section 8.

* Figures are rounded to the nearest 10 and may not sum due to rounding

Quarterly Employment Survey (QES) – Sample of data available on website

**The Northern Ireland Quarterly Employment Survey
Table 12**

Table Name	Description	File Size
5.1	NI Employee Jobs - Seasonally Adjusted March 2011	15.5 KB
5.2	NI Employee Jobs - Seasonally Adjusted 1998 – 2011	15.5 KB
5.3	NI Employee Jobs - Unadjusted 1998 – 2011	15.5 KB
5.4	NI Employee Jobs (Unadjusted) by Industry Section – March 2011	15.5 KB
5.5	NI Public Sector Jobs (Unadjusted) – March 2011	13.5 KB
5.6	NI Employee Jobs by Industry Section (Unadjusted) March 2010, December 2010 and March 2011	15.5 KB
5.7	Self Employment Jobs in NI by Broad Industry Group (June of Each Year)	15.0 KB
5.8	Workforce in Employment 1983 – 2010	15.0 KB
5.9	NI Employee Jobs by 2-digit SIC07 Class – March 2011	31.5 KB

**Other Quarterly Employment Survey Publications available on website
Table 13**

Publication title	File Size
Quarterly Employment Survey (QES) Supplement – March 2011	493 KB