

# Quarterly Employment Survey

# 5

**Important Notice : Due to revisions in the QES sampling methodology, a discontinuity in the jobs series exists for all estimates from Q3 2009 onwards. For more details please follow link: <http://www.detini.gov.uk/deti-stats-index/stats-surveys/stats-qes/stats-qes-discontinuity-notice.htm>**

## Seasonally Adjusted

The June 2011 seasonally adjusted employee jobs figure stands at 699,650.

This represents a seasonally adjusted decrease of 0.3% (or 1,830 jobs) from the revised March 2011 estimate of 701,490.

Over the quarter seasonally adjusted employee jobs decreased in the Service Sector by 0.3% (1,520 jobs) and also in the Construction Sector by 1.5% (500 jobs). The Manufacturing sector increased over the quarter by 0.1% (70 jobs). "Other Industries" also increased over the quarter by 0.6% (110 jobs).

## Unadjusted

The June 2011 seasonally unadjusted figure stands at 698,890.

This represents a decrease of 0.3% (or 1,980 jobs) from March 2011 and a decrease of 1.4% (9,860 jobs) in the past year.

Over the year, June 2010 to June 2011, the unadjusted employee jobs figure for Construction decreased by 9.1% (3,310 jobs), Service Sector employee jobs decreased by 1.3% (7,670 jobs) and Manufacturing employee jobs increased by 1.2% (900 jobs).

## Manufacturing Employee Jobs

The level of jobs in the Manufacturing sector in both NI and GB has declined significantly over the past 10 years.

NI manufacturing jobs recorded a marked decline between 2001 and 2005, with the figure for 2005 falling to 85% of the 2001 figure. Manufacturing employee jobs in NI were fairly stable between 2005 and 2008, with the 2008 figure at 84% of the 2001 level. However manufacturing jobs have fallen again between 2008 and 2010 reaching 74% of their 2001 level. Manufacturing jobs in 2011 have increased slightly and now stand at 75% of the 2001 level.

Manufacturing jobs in GB have been in sharp decline from 2001 and the 2011 estimate stands at 65% of the 2001 level.

## Changes in the Structure of Manufacturing Jobs (NI)

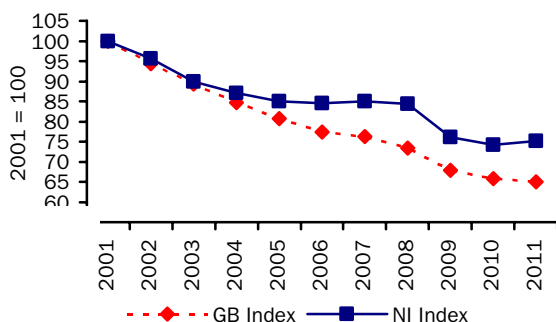
Over the period 2001-2011, Manufacturing jobs in NI decreased by 24,610, with 17 of the 23 manufacturing divisions recording a decrease. The largest decrease occurred in the Manufacture of wearing apparel, which recorded 6,320 fewer jobs. There were 5,240 fewer jobs in the Manufacture of computer, electronic and optical products, 4,460 fewer in the Manufacture of textiles, 1,930 fewer in the Manufacture of motor vehicles, trailers and semi-trailers and 1,810 fewer in the Manufacture of other transport equipment.

However, these decreases were partially offset by increases in the Manufacture of fabricated metal products, except machinery and equipment (980), in the Manufacture of basic pharmaceutical products and pharmaceutical preparations (690), in the Repair and installation of machinery and equipment (320) and also in Manufacture of basic metals (80).

The large decline in the Manufacture of Textiles and Wearing Apparel sectors has impacted on the structure of Northern Ireland Manufacturing jobs. In 2001 13.5% of Manufacturing jobs were located in the Textiles and Wearing Apparel sectors; by 2011 this had fallen to 3.5%.

## Manufacturing jobs for NI & GB indexed (June of each year\*)

Figure 11



\*GB figures for 2011 refer to March 2011

**Quarterly Employment Survey**  
**Northern Ireland Seasonally Adjusted Employee Jobs\* June 2011**  
**Table 10**

				% change in total	
	Males	Females	All persons	since last quarter	since last year
Manufacturing	58,140	16,120	74,260	0.1	1.2
Construction <sup>1</sup>	28,740	4,170	32,910	-1.5	-9.1
Services	230,490	342,230	572,720	-0.3	-1.3
Other <sup>2</sup>	16,920	2,840	19,760	0.6	1.1
<b>Total</b>	<b>334,290</b>	<b>365,370</b>	<b>699,650</b>	<b>-0.3</b>	<b>-1.4</b>

<sup>1</sup> Figures for females in the construction industry are not seasonally adjusted

<sup>2</sup> Covers Industry Sections A, B, D and E which have not been seasonally adjusted

\* Figures are rounded to the nearest 10 and may not sum due to rounding

**Northern Ireland Employee Jobs\* - Seasonally Adjusted Series**  
**Table 11**

		Manufacturing	Construction <sup>1</sup>	Services	Other Industries <sup>2</sup>	All Industries	Public <sup>3</sup>	Private <sup>3</sup>
2005	March	85,290	37,770	551,210	22,430	696,690	218,630	477,910
	June	84,150	38,750	551,870	21,130	695,890	219,700	476,190
	September	84,190	39,310	553,750	21,310	698,570	220,970	478,040
	December	83,780	41,150	557,360	21,390	703,670	221,040	482,310
2006	March	84,060	41,790	559,290	21,390	706,530	220,570	485,750
	June	83,600	42,300	560,110	20,830	706,850	220,670	486,340
	September	83,870	42,690	562,670	20,910	710,150	221,080	489,520
	December	84,020	43,140	564,600	20,990	712,740	220,470	491,810
2007	March	83,830	43,460	567,050	21,050	715,390	220,180	495,010
	June	84,100	44,710	571,120	20,890	720,820	220,730	500,370
	September	83,930	45,320	575,260	21,070	725,580	219,450	506,640
	December	83,510	46,820	578,810	20,170	729,320	219,780	508,830
2008	March	83,680	45,860	582,730	20,150	732,410	219,790	512,530
	June	83,390	44,860	584,550	20,370	733,160	218,440	515,080
	September	82,210	43,500	581,580	20,440	727,730	216,210	512,010
	December	80,180	41,670	579,410	20,040	721,290	224,070	496,530
2009	March	78,130	39,420	577,370	19,960	714,890	224,360	490,440
	June	75,340	38,210	577,150	19,910	710,610	225,040	485,820
	September	73,990	36,780	578,020	19,800	708,590	225,530	483,530
<b>DISCONTINUITY IN SERIES – PLEASE SEE NOTE AT BEGINNING OF SECTION 5</b>								
	December <sup>^</sup>	73,490	37,190	581,870	19,800	712,360	224,500	487,220
2010	March	73,190	37,000	580,870	19,800	710,860	223,490	487,310
	June	73,370	36,220	580,410	19,540	709,540	221,980	487,790
	September	73,300	35,870	578,110	19,680	706,950	219,690	487,740
	December	74,470	33,660	574,630	19,670	702,430	220,200	481,600
2011	March	74,190	33,410	574,240	19,650	701,490	219,070	482,330
	June	74,260	32,910	572,720	19,760	699,650	218,000	481,910

<sup>1</sup> Figures for females in the construction industry are not seasonally adjusted

<sup>2</sup> Covers Industry Sections A, B, D and E which have not been seasonally adjusted

<sup>3</sup> Public and Private splits may not sum to total.

\* Figures are rounded to the nearest 10 and may not sum due to rounding

## Quarterly Employment Survey (QES) – Sample of data available on website

### The Northern Ireland Quarterly Employment Survey Table 12

Table Name	Description	File Size
5.1	<a href="#">NI Employee Jobs - Seasonally Adjusted June 2011</a>	15.5 KB
5.2	<a href="#">NI Employee Jobs - Seasonally Adjusted 1998 – 2011</a>	15.5 KB
5.3	<a href="#">NI Employee Jobs - Unadjusted 1998 – 2011</a>	15.5 KB
5.4	<a href="#">NI Employee Jobs (Unadjusted) by Industry Section – June 2011</a>	15.5 KB
5.5	<a href="#">NI Public Sector Jobs (Unadjusted) – June 2011</a>	13.5 KB
5.6	<a href="#">NI Employee Jobs by Industry Section (Unadjusted) June 2010, March 2011 and June 2011</a>	15.5 KB
5.7	<a href="#">Self Employment Jobs in NI by Broad Industry Group (June of Each Year)</a>	15.0 KB
5.8	<a href="#">Workforce in Employment 1983 – 2011</a>	15.0 KB
5.9	<a href="#">NI Employee Jobs by 2-digit SIC07 Class – June 2011</a>	31.5 KB

### Other Quarterly Employment Survey Publications available on website Table 13

Publication title	File Size
<a href="#">Quarterly Employment Survey (QES) Supplement – June 2011</a>	493 KB