

Quarterly Employment Survey

5

Seasonally Adjusted

The June 2009 seasonally adjusted employee jobs figure stands at 709,040.

This represents a seasonally adjusted decrease of 0.8% (or 5,470 jobs) from the revised March 2009 estimate of 714,510.

Over the quarter seasonally adjusted employee jobs decreased in the Manufacturing Sector by 2.8% (2,190 jobs), in the Service Sector by 0.3% (1,600 jobs) while employee jobs in the Construction Sector fell by 4.0% (1,580 jobs).

Unadjusted

The June 2009 seasonally unadjusted figure stands at 707,750.

This represents a decrease of 0.9% (or 6,140 jobs) from March 2009 and a decrease of 3.5% (25,340 jobs) in the past year.

Over the year, June 2008 to June 2009, the unadjusted employee jobs figure for Construction decreased by 14.9% (6,580 jobs), Manufacturing employee jobs decreased by 8.6% (7,160 jobs) while employee jobs in the Service Sector decreased by 1.9% (11,010 jobs).

Manufacturing Employee Jobs

The level of jobs in the Manufacturing sector in both NI and GB has declined significantly over the past 10 years.

NI manufacturing jobs recorded a marked decline between 1999 and 2005, with the figure for 2005 falling to 82% of the 1999 figure. Manufacturing employee jobs in NI were fairly stable between 2005 and 2008, with the 2008 figure remaining at 81% of the 1999 level. However manufacturing jobs have fallen again in 2009 to 74% of their 1999 level.

Manufacturing jobs in GB have been in sharp decline from 1999 and the 2009 estimate stands at 66% of the 1999 level.

Changes in the Structure of Manufacturing Jobs (NI)

Over the period 1999-2009, Manufacturing jobs in NI decreased by 26,480, with 19 of the 24 manufacturing divisions recording a decrease. The largest decrease occurred in the Manufacture of Wearing Apparel, with a fall of 11,110 jobs. There were 5,890 fewer jobs in the Manufacture of Textiles, 2,920 fewer in the Manufacture of Computer, Electronic and Optical Products, 1,350 fewer in the Manufacture of Motor Vehicles, Trailers and Semi-Trailers and 1,300 fewer in the Manufacture of Other Transport Equipment.

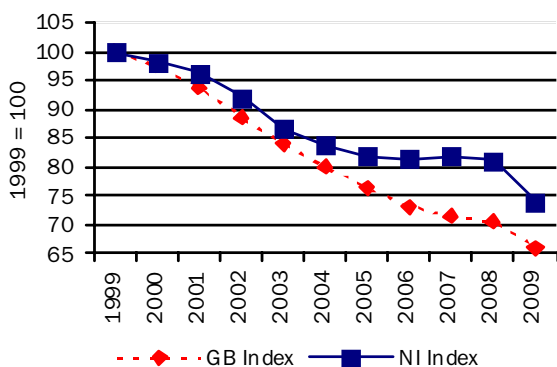
However these decreases were somewhat offset by an increase in the Manufacture of Fabricated Metal Products, except Machinery and Equipment (+720), in the Manufacture of Basic Pharmaceutical Products And Pharmaceutical Preparations (+370), in the Manufacture of Wood And Of Products Of Wood And Cork, Except Furniture; Manufacture Of Articles Of Straw And Plaiting Materials (+260), and Installation Of Machinery And Equipment (+130 jobs).

The large decline in the Manufacture of Textiles and Wearing Apparel sectors has impacted on the structure of Northern Ireland Manufacturing jobs. In 1999 19% of Manufacturing jobs were located in the Textiles and Wearing Apparel sectors; by 2009 this had fallen to 3%.

Manufacturing jobs for NI & GB

indexed (June of each year)

Figure 11



Quarterly Employment Survey
Northern Ireland Seasonally Adjusted Employee Jobs* June 2009
Table 10

				% change in total	
	Males	Females	All persons	since last quarter	since last year
Manufacturing	59,620	16,630	76,250	-2.8	-8.6
Construction ¹	33,170	4,650	37,820	-4.0	-14.8
Services	228,200	345,820	574,020	-0.3	-1.9
Other ²	18,120	2,830	20,940	-0.5	-2.7
Total	339,110	369,930	709,040	-0.8	-3.5

¹ Figures for females in the construction industry are not seasonally adjusted

² Covers Industry Sections A, B, D and E which have not been seasonally adjusted

* Figures are rounded to the nearest 10 and may not sum due to rounding

Northern Ireland Employee Jobs* - Seasonally Adjusted Series
Table 11

		Manufacturing	Construction ¹	Services	Other Industries ²	All Industries
2003	March	90,780	35,940	521,070	21,900	669,680
	June	89,240	36,410	526,200	22,440	674,300
	September	88,710	36,430	528,360	22,380	675,880
	December	87,770	36,630	530,520	22,640	677,560
2004	March	87,300	37,190	533,920	22,610	681,020
	June	86,340	37,200	535,790	22,290	681,630
	September	85,910	37,290	541,400	22,480	687,080
	December	85,490	37,410	544,700	22,770	690,370
2005	March	85,130	37,860	550,970	22,430	696,400
	June	84,330	38,760	551,900	21,130	696,110
	September	84,170	39,340	553,860	21,310	698,690
	December	83,770	40,980	557,470	21,390	703,600
2006	March	83,910	41,910	559,030	21,390	706,250
	June	83,780	42,320	560,190	20,830	707,120
	September	83,850	42,740	562,750	20,910	710,250
	December	84,000	42,930	564,690	20,990	712,610
2007	March	83,680	43,610	566,800	21,050	715,140
	June	84,270	44,750	571,250	20,890	721,160
	September	83,940	45,360	575,210	21,070	725,580
	December	83,390	45,910	580,000	21,430	730,730
2008	March	83,420	45,450	583,340	21,350	733,560
	June	83,410	44,380	585,160	21,530	734,490
	September	82,030	43,050	581,090	21,610	727,780
	December	80,630	41,110	578,470	21,250	721,450
2009	March	78,440	39,400	575,620	21,050	714,510
	June	76,250	37,820	574,020	20,940	709,040

¹ Figures for females in the construction industry are not seasonally adjusted

² Covers Industry Sections A, B, D and E which have not been seasonally adjusted

* Figures are rounded to the nearest 10 and may not sum due to rounding

Quarterly Employment Survey (QES) – Sample of data available on website

The Northern Ireland Quarterly Employment Survey Table 12

Table Name	Description	File Size
5.1	NI Employee Jobs - Seasonally Adjusted June 2009	15.5 KB
5.2	NI Employee Jobs - Seasonally Adjusted 1998 – 2009	15.5 KB
5.3	NI Employee Jobs - Unadjusted 1998 – 2009	15.5 KB
5.4	NI Employee Jobs (Unadjusted) by Industry Section – June 2009	15.5 KB
5.5	NI Public Sector Jobs (Unadjusted) – June 2009	13.5 KB
5.6	NI Employee Jobs by Industry Section (Unadjusted) June 2008, March 2009 and June 2009	15.5 KB
5.7	Self Employment Jobs in NI by Broad Industry Group (June of Each Year)	15.0 KB
5.8	Workforce in Employment 1983 – 2008	15.0 KB
5.9	NI Employee Jobs by 2-digit SIC07 Class – June 2009	31.5 KB

Other Quarterly Employment Survey Publications available on website

Table 13

Publication title	File Size
Quarterly Employment Survey (QES) Supplement - June 2009	493 KB