

# Quarterly Employment Survey

## 5

### Seasonally Adjusted

The December 2010 seasonally adjusted employee jobs figure stands at 692,910.

This represents a seasonally adjusted decrease of 0.3% (or 1,880 jobs) from the revised September 2010 estimate of 694,790.

Over the quarter seasonally adjusted employee jobs decreased in the Service Sector by 0.2% (1,270 jobs), and also in the Construction Sector by 4.5% (1,480 jobs). Other Industries also decreased over the quarter by 0.4% (70 jobs). Seasonally adjusted employee jobs increased in the Manufacturing sector by 1.3% (950 jobs).

### Unadjusted

The December 2010 seasonally unadjusted figure stands at 697,520.

This represents an increase of 0.8% (5,490 jobs) since September 2010 and a decrease of 1.2% (8,350 jobs) in the past year.

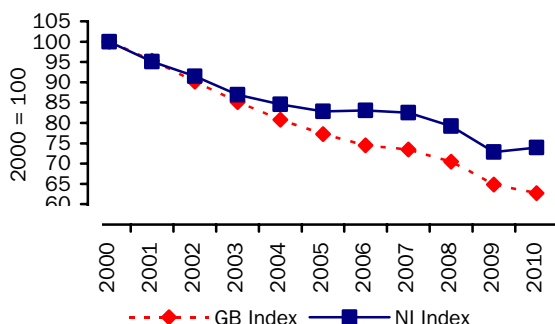
Over the year, December 2009 to December 2010, the unadjusted employee jobs figure for Construction decreased by 10.1% (3,540 jobs), while employee jobs in the Service Sector decreased by 0.9% (5,440 jobs). Manufacturing employee jobs increased by 1.5% (1,100 jobs) over the year.

### Manufacturing Employee Jobs

The level of jobs in the Manufacturing sector in both NI and GB has declined significantly over the past 10 years.

### Manufacturing jobs for NI & GB indexed (December of each year\*)

Figure 11



\*GB figures for 2010 refer to September 2010

NI manufacturing jobs recorded a marked decline between 2000 and 2005, with the figure for 2005 falling to 83% of the 2000 figure. Manufacturing employee jobs in NI were fairly stable between 2005 and 2007, with the 2007 figure remaining at 83% of the 2000 level. However, manufacturing jobs continued their decline between 2007 and 2009, falling to 73% of the 2000 level. There has been a turnaround in the manufacturing employee jobs in 2010 with the figure rising to 74% of the 2000 level.

Manufacturing jobs in GB have been in sharp decline from 2000 and the 2010 estimate stands at only 63% of the 2000 level.

### Changes in the Structure of Manufacturing Jobs (NI)

Over the period 2000-2010, Manufacturing jobs in NI decreased by 26,390, with 18 of the 23 manufacturing divisions recording a decrease. The largest decrease occurred in the Manufacture of wearing apparel, which recorded 7,160 fewer jobs. There were 6,200 fewer jobs in the Manufacture of computer, electronic and optical products, 5,320 fewer in the Manufacture of textiles, 1,760 fewer in the Manufacture of motor vehicles, trailers and semi-trailers and 1,550 fewer in the Manufacture of other transport equipment.

However, these decreases were partially offset by increases in the Manufacture of basic pharmaceutical products and pharmaceutical preparations (630), in the Manufacture of food products (400) and in the Manufacture of fabricated metal products, except machinery and equipment (360).

The large decline in the Manufacture of Textiles and Wearing Apparel sectors has impacted on the structure of Northern Ireland Manufacturing jobs. In 2000 15.0% of Manufacturing jobs were located in the Textiles, Wearing Apparel and Leather Related Products sectors; by 2010 this had fallen to 3.2%.

**Quarterly Employment Survey**  
**Northern Ireland Seasonally Adjusted Employee Jobs\* December 2010**  
**Table 10**

				% change in total	
	Males	Females	All persons	since last quarter	since last year
Manufacturing	58,390	16,310	74,700	1.3	1.4
Construction <sup>1</sup>	27,840	3,820	31,660	-4.5	-10.0
Services	227,390	340,100	567,490	-0.2	-0.9
Other <sup>2</sup>	16,400	2,660	19,060	-0.4	-2.4
<b>Total</b>	<b>330,020</b>	<b>362,890</b>	<b>692,910</b>	<b>-0.3</b>	<b>-1.2</b>

<sup>1</sup> Figures for females in the construction industry are not seasonally adjusted

<sup>2</sup> Covers Industry Sections A, B, D and E which have not been seasonally adjusted

\* Figures are rounded to the nearest 10 and may not sum due to rounding

**Northern Ireland Employee Jobs\* - Seasonally Adjusted Series**  
**Table 11**

		Manufacturing	Construction <sup>1</sup>	Services	Other Industries <sup>2</sup>	All Industries	Public <sup>3</sup>	Private <sup>3</sup>
2004	March	87,330	37,210	534,220	22,610	681,370	215,523	465,850
	June	86,310	37,220	535,600	22,290	681,430	213,826	467,530
	September	85,890	37,250	541,280	22,480	686,900	217,510	469,540
	December	85,510	37,420	544,690	22,770	690,390	217,997	472,300
2005	March	85,150	37,880	551,310	22,430	696,760	218,722	478,150
	June	84,300	38,770	551,730	21,130	695,930	219,797	476,010
	September	84,160	39,310	553,660	21,310	698,430	220,775	477,650
	December	83,800	41,010	557,490	21,390	703,690	221,032	482,650
2006	March	83,910	41,920	559,370	21,390	706,590	220,694	486,120
	June	83,750	42,310	560,090	20,830	706,970	220,698	486,130
	September	83,860	42,690	562,380	20,910	709,840	220,985	488,660
	December	84,030	43,010	564,860	20,990	712,890	220,390	492,560
2007	March	83,670	43,590	567,060	21,050	715,380	220,314	495,450
	June	84,220	44,710	571,260	20,890	721,080	220,736	500,190
	September	83,970	45,320	574,700	21,070	725,060	219,433	505,190
	December	83,490	46,690	579,240	20,170	729,600	219,640	510,090
2008	March	83,520	46,000	582,710	20,150	732,370	219,915	513,020
	June	83,500	44,850	584,800	20,370	733,520	218,447	514,910
	September	82,300	43,480	580,800	20,440	727,030	216,254	510,100
	December	80,140	41,570	579,910	20,040	721,650	223,876	498,120
2009	March	77,970	39,540	577,410	19,960	714,880	224,481	490,910
	June	75,450	38,210	577,460	19,910	711,020	225,068	485,700
	September	74,110	36,750	577,070	19,800	707,730	225,606	481,440
	December	73,640	35,190	572,760	19,520	701,110	226,439	475,190
2010	March	73,360	34,770	572,440	19,530	700,090	225,512	475,000
	June	73,640	34,020	569,720	19,200	696,580	224,826	471,480
	September	73,750	33,140	568,760	19,130	694,790	223,662	470,520
	December	74,700	31,660	567,490	19,060	692,910	222,897	470,480

<sup>1</sup> Figures for females in the construction industry are not seasonally adjusted

<sup>2</sup> Covers Industry Sections A, B, D and E which have not been seasonally adjusted

<sup>3</sup> Estimates of Public and Private sector jobs may not sum to the total Jobs, as each series is seasonally adjusted separately.

\* Figures are rounded to the nearest 10 and may not sum due to rounding

## Quarterly Employment Survey (QES) – Sample of data available on website

### The Northern Ireland Quarterly Employment Survey Table 12

Table Name	Description	File Size
5.1	<a href="#">NI Employee Jobs - Seasonally Adjusted December 2010</a>	15.5 KB
5.2	<a href="#">NI Employee Jobs - Seasonally Adjusted 1998 – 2010</a>	15.5 KB
5.3	<a href="#">NI Employee Jobs - Unadjusted 1998 – 2010</a>	15.5 KB
5.4	<a href="#">NI Employee Jobs (Unadjusted) by Industry Section – December 2010</a>	15.5 KB
5.5	<a href="#">NI Public Sector Jobs (Unadjusted) – December 2010</a>	13.5 KB
5.6	<a href="#">NI Employee Jobs by Industry Section (Unadjusted) December 2009, September 2010 and December 2010</a>	15.5 KB
5.7	<a href="#">Self Employment Jobs in NI by Broad Industry Group (June of Each Year)</a>	15.0 KB
5.8	<a href="#">Workforce in Employment 1983 – 2010</a>	15.0 KB
5.9	<a href="#">NI Employee Jobs by 2-digit SIC07 Class – December 2010</a>	31.5 KB

### Other Quarterly Employment Survey Publications available on website Table 13

Publication title	File Size
<a href="#">Quarterly Employment Survey (QES) Supplement - December 2010</a>	493 KB