

Quarterly Employment Survey

5

Seasonally Adjusted

The September 2009 seasonally adjusted employee jobs figure stands at 701,730.

This represents a seasonally adjusted decrease of 0.7% (or 5,010 jobs) from the revised June 2009 estimate of 706,730.

Over the quarter seasonally adjusted employee jobs decreased in the Manufacturing Sector by 2.0% (1,540 jobs), in the Service Sector by 0.3% (1,640 jobs) while employee jobs in the Construction Sector fell by 4.6% (1,720 jobs).

Unadjusted

The September 2009 seasonally unadjusted figure stands at 697,870.

This represents a decrease of 1.1% (or 7,960 jobs) from June 2009 and a decrease of 3.5% (25,660 jobs) in the past year.

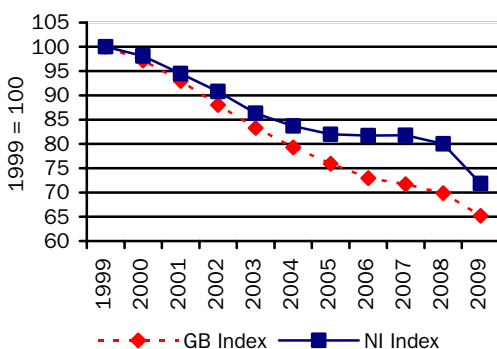
Over the year, September 2008 to September 2009, the unadjusted employee jobs figure for Construction decreased by 16.8% (7,260 jobs), Manufacturing employee jobs decreased by 10.2% (8,400 jobs) while employee jobs in the Service Sector decreased by 1.6% (9,230 jobs).

Manufacturing Employee Jobs

The level of jobs in the Manufacturing sector in both NI and GB has declined significantly over the past 10 years.

Manufacturing jobs for NI & GB* indexed (September of each year)

Figure 11



*GB figure for 2009 as at June

NI manufacturing jobs recorded a marked decline between 1999 and 2005, with the figure for 2005 falling to 82% of the 1999 figure. Manufacturing employee jobs in NI were fairly stable between 2005 and 2008, with the 2008 figure remaining at 80% of the 1999 level. However manufacturing jobs have fallen again in 2009 to 72% of their 1999 level.

Manufacturing jobs in GB have been in sharp decline from 1999 and the 2009 estimate stands at 65% of the 1999 level.

Changes in the Structure of Manufacturing Jobs (NI)

Over the period 1999-2009, Manufacturing jobs in NI decreased by 28,990, with 19 of the 24 manufacturing divisions recording a decrease. The largest decrease occurred in the Manufacture of Wearing Apparel, with a fall of 10,870 jobs. There were 5,820 fewer jobs in the Manufacture of Textiles, 3,930 fewer in the Manufacture of Computer, Electronic and Optical Products, 1,490 fewer in the Manufacture of Motor Vehicles, Trailers and Semi-Trailers and 1,480 fewer in the Manufacture of Other Transport Equipment.

However these decreases were somewhat offset by an increase in the Manufacture of Basic Pharmaceutical Products And Pharmaceutical Preparations (+390), in the Manufacture of Wood And Of Products Of Wood And Cork, Except Furniture; Manufacture Of Articles Of Straw And Plaiting Materials (+130), Manufacture of Fabricated Metal Products, except Machinery and Equipment (+120), in and Installation Of Machinery And Equipment (+80 jobs).

The large decline in the Manufacture of Textiles and Wearing Apparel sectors has impacted on the structure of Northern Ireland Manufacturing jobs. In 1999 18% of Manufacturing jobs were located in the Textiles and Wearing Apparel sectors; by 2009 this had fallen to 3%.

Quarterly Employment Survey
Northern Ireland Seasonally Adjusted Employee Jobs* September 2009
Table 10

				% change in total	
	Males	Females	All persons	since last quarter	since last year
Manufacturing	57,630	16,130	73,760	-2.0	-10.2
Construction ¹	31,630	4,220	35,850	-4.6	-16.8
Services	227,330	344,000	571,330	-0.3	-1.6
Other ²	17,970	2,820	20,780	-0.5	-3.6
Total	334,560	367,170	701,730	-0.7	-3.5

¹ Figures for females in the construction industry are not seasonally adjusted

² Covers Industry Sections A, B, D and E which have not been seasonally adjusted

* Figures are rounded to the nearest 10 and may not sum due to rounding

Northern Ireland Employee Jobs* - Seasonally Adjusted Series
Table 11

		Manufacturing	Construction ¹	Services	Other Industries ²	All Industries
2003	March	90,780	35,940	521,070	21,900	669,680
	June	89,240	36,410	526,200	22,440	674,300
	September	88,710	36,430	528,360	22,380	675,880
	December	87,770	36,630	530,530	22,640	677,570
2004	March	87,300	37,190	533,910	22,610	681,010
	June	86,330	37,200	535,800	22,290	681,630
	September	85,910	37,290	541,410	22,480	687,090
	December	85,490	37,410	544,700	22,770	690,370
2005	March	85,140	37,870	550,950	22,430	696,390
	June	84,310	38,770	551,900	21,130	696,110
	September	84,160	39,340	553,880	21,310	698,700
	December	83,790	40,970	557,460	21,390	703,600
2006	March	83,910	41,930	559,040	21,390	706,270
	June	83,750	42,330	560,130	20,830	707,040
	September	83,830	42,730	562,840	20,910	710,310
	December	84,050	42,910	564,660	20,990	712,610
2007	March	83,690	43,640	566,810	21,050	715,190
	June	84,210	44,750	571,120	20,890	720,980
	September	83,920	45,350	575,370	21,070	725,710
	December	83,590	45,960	580,150	21,390	731,080
2008	March	83,540	45,580	582,540	21,310	732,960
	June	83,440	44,440	584,040	21,500	733,410
	September	82,140	43,120	580,510	21,560	727,330
	December	80,190	41,090	577,690	21,210	720,170
2009	March	77,870	39,190	574,690	21,000	712,760
	June	75,310	37,570	572,970	20,890	706,730
	September	73,760	35,850	571,330	20,780	701,730

¹ Figures for females in the construction industry are not seasonally adjusted

² Covers Industry Sections A, B, D and E which have not been seasonally adjusted

Quarterly Employment Survey (QES) – Sample of data available on website

The Northern Ireland Quarterly Employment Survey

Table 12

Table Name	Description	File Size
5.1	NI Employee Jobs - Seasonally Adjusted September 2009	15.5 KB
5.2	NI Employee Jobs - Seasonally Adjusted 1998 – 2009	15.5 KB
5.3	NI Employee Jobs - Unadjusted 1998 – 2009	15.5 KB
5.4	NI Employee Jobs (Unadjusted) by Industry Section – September 2009	15.5 KB
5.5	NI Public Sector Jobs (Unadjusted) – September 2009	13.5 KB
5.6	NI Employee Jobs by Industry Section (Unadjusted) September 2008, June 2009 and September 2009	15.5 KB
5.7	Self Employment Jobs in NI by Broad Industry Group (June of Each Year)	15.0 KB
5.8	Workforce in Employment 1983 – 2008	15.0 KB
5.9	NI Employee Jobs by 2-digit SIC07 Class – September 2009	31.5 KB

Other Quarterly Employment Survey Publications available on website

Table 13

Publication title	File Size
Quarterly Employment Survey (QES) Supplement - September 2009	493 KB