



Department of
**Finance and
Personnel**
www.dfpni.gov.uk

Labour Market

Statistics Bulletin

Monthly Labour Market Report

January 2012



A NATIONAL STATISTICS PUBLICATION

The United Kingdom Statistics Authority has designated these statistics as National Statistics, in accordance with the Statistics and Registration Service Act 2007 and signifying compliance with the Code of Practice for Official Statistics.

Designation can be broadly interpreted to mean that the statistics:

- meet identified user needs;
- are well explained and readily accessible;
- are produced according to sound methods, and
- are managed impartially and objectively in the public interest.

Once statistics have been designated as National Statistics it is a statutory requirement that the Code of Practice shall continue to be observed.

Northern Ireland Statistics &
Research Agency

Monthly Labour Market Report

January 2012

Crown Copyright

From the 1st April 2011, the responsibility for the collection of data and production of official labour market and economic statistics transferred from the Department of Enterprise, Trade and Investment to the Northern Ireland Statistics and Research Agency (DFP). This transfer mirrored the position in Great Britain where most business surveys and labour market data collection and statistical production have been transferred from the departments with policy responsibilities to the Office for National Statistics (ONS). However, it is important to note that there are no planned changes to the production of economic and labour market statistical publications and outputs as a result of the transfer.

For further information please contact:

Gerard Colgan
Economic and Labour Market Statistics Branch, Room 110,
Netherleigh, Massey Avenue, Belfast BT4 2JP

Tel: (028) 9052 9523
Fax: (028) 9052 9658
Textphone: (028) 9052 9304
Email: gerard.colgan@dfpni.gov.uk

Contents

1

Labour Market
Pages 1-3

2

Labour Force Survey.
Pages 4-6

3

Claimant Count
Pages 7-10

4

Redundancies
Page 11

5

Quarterly
Employment Survey -
QES
Pages 12-14

6

Annual Survey of
Hours and Earnings -
ASHE
Pages 15-16

7

Vacancy Statistics
and Employment &
Training measures
Page 17-18

8

International-
Regional Analysis
Pages 19-20

9

Further Information
Page 21-22

Labour Market

1

Seasonally adjusted Labour Force Survey (LFS) estimates for Northern Ireland for the period September - November 2011 recorded an increase over the quarter in the number of employed and economically inactive persons, while there was a decrease in the number of unemployed persons. The seasonally adjusted claimant count in December 2011 increased by 100 over the month to 60,700. 693 proposed redundancies were notified in the latest reference period and there were 245 confirmed redundancies in December 2011.

Employment

The number of persons in employment in the period September - November was estimated at 803,000. This estimate was up 4,000 over the quarter and 35,000 over the year. The employment rate for those aged 16-64 was estimated at 67.8%, up 0.5 percentage points over the quarter and 2.5 percentage points over the year. However, NI's employment rate remained below the UK average (70.3%) and was the fourth lowest rate among the twelve UK regions.

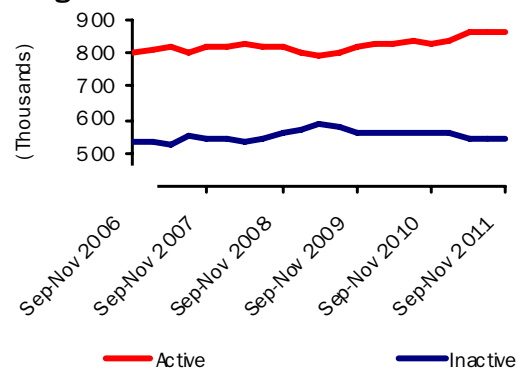
Unemployment

The unemployment rate for the period September - November was estimated at 6.8%, down 0.7 percentage points over the quarter and down 1.0 percentage points over the year. The number of unemployed persons was estimated at 59,000, down 7,000 over both the quarter and year.

Unadjusted figures show that 37.0% of the unemployed have been unemployed for 1 year or more – down 12.8 percentage points over the year. They also estimate the unemployment rate for 18 - 24 year olds at 18.4% – down 2.5 percentage points over the year.

Seasonally Adjusted Labour Market Summary for Northern Ireland (16+)

Figure 1



Economically Inactive

The seasonally adjusted number of economically inactive persons in the period September - November was estimated at 547,000. This figure has increased by 5,000 over the quarter, but was down 17,000 over the year.

The NI economic inactivity rate for those aged 16-64 stands at 27.1%. This is significantly higher than the UK average rate (23.1%) and is the highest of the twelve UK regions. Unadjusted figures estimate that 31% of the economically inactive, aged 16-64, in NI are students, 30% are sick/disabled, 21% are looking after the family/home, 12% are retired and 7% are 'other' reason.

Unadjusted figures also show that while 91% of the inactive do not want work, the remaining 9% (51,000) want employment but do not satisfy the full ILO job search criteria (by actively seeking work and being available to start a job).

Estimates from the LFS have an associated

Northern Ireland Labour Market Summary (seasonally adjusted)

Table 1

| | Period | Estimate | Sampling Variability of estimate | Change over year | Sampling Variability of change |
|---------------------------------------|---------------|----------|----------------------------------|------------------|--------------------------------|
| Employment | Sep-Nov 2011 | 803,000 | +/-24,000 | 35,000 | +/-30,000 |
| Unemployment | Sep-Nov 2011 | 59,000 | +/-11,000 | -7,000 | +/-15,000 |
| Economically inactive | Sep-Nov 2011 | 547,000 | +/-21,000 | -17,000 | +/-27,000 |
| Unemployment rate | Sep-Nov 2011 | 6.8% | +/-1.3pps | -1.0pps | +/-1.8pps |
| Employment rate ¹ | Sep-Nov 2011 | 67.8% | +/-1.8pps | 2.5pps | +/-2.3pps |
| Economic inactivity rate ¹ | Sep-Nov 2011 | 27.1% | +/-1.7pps | -1.9pps | +/-2.2pps |
| Claimant Count | December 2011 | 60,700 | | 2,400 | |

Note: pps = percentage points, ¹ Rates based on 16-64 population - see Section 9 for details.

degree of statistical error as they are based on a sample of the population. The annual changes for the main LFS categories of employment, unemployment and economic inactivity were tested for statistical significance. The results showed that the annual change in the employment level and rate were statistically significant i.e. the recorded change exceeded the variability expected from a sample survey of this size (see table 1 and Section 9 for details).

Unemployment Regional Comparison

The latest NI seasonally adjusted unemployment rate (6.8%) was lower than the overall UK average rate (8.4%) and was the third lowest rate among the twelve UK regions. The NI rate was also below the European Union (9.8%) and Republic of Ireland (14.3%) rates for October 2011. Comparable figures for the three months to October 2011 estimate the NI unemployment rate for 18-24 year olds at 18.2%, compared to a UK average rate of 20.5%.

Claimant Count

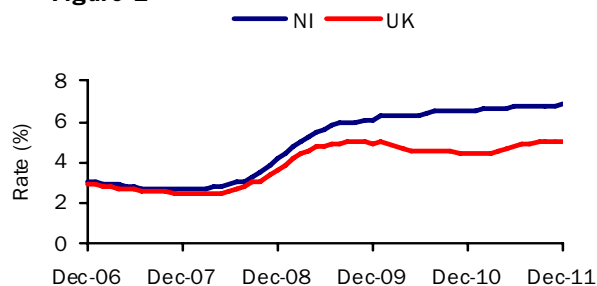
The more recent seasonally adjusted claimant count increased by 100 (0.2%) from last month's revised total. It now stands at 60,700 (6.9% of the workforce) in December 2011. Over the year the Claimant Count in NI has increased by 2,400 (4.1%) and the workforce unemployment rate has increased by 0.3 percentage points.

Claimant Count Regional Comparison

The seasonally adjusted claimant count rate in NI (6.9%) was higher than the UK average rate (5.0%) and was the second highest rate among the twelve UK regions. The monthly increase in NI claimants (0.2%) was higher than the UK average increase of 0.1% during the same period. However, the annual increase in NI claimants (4.1%) was the second lowest among the UK regions (the annual increase in the UK was 9.8%).

Seasonally Adjusted Claimant Count Monthly Rates

Figure 2



Claimant count rates for District Council Areas

Figure 3 (unadjusted numbers as a percentage of the resident working age population) show that the highest rates at December 2011 were in Derry (8.0%), Belfast (6.9%), Strabane (6.9%) and Limavady (6.8%). Those that showed the highest percentage increase in levels over the year to December 2011 were Fermanagh (12.9%), Carrickfergus (10.1%) and Derry (9.6%). For further District Council data please see section 3 of the Labour Market Report.

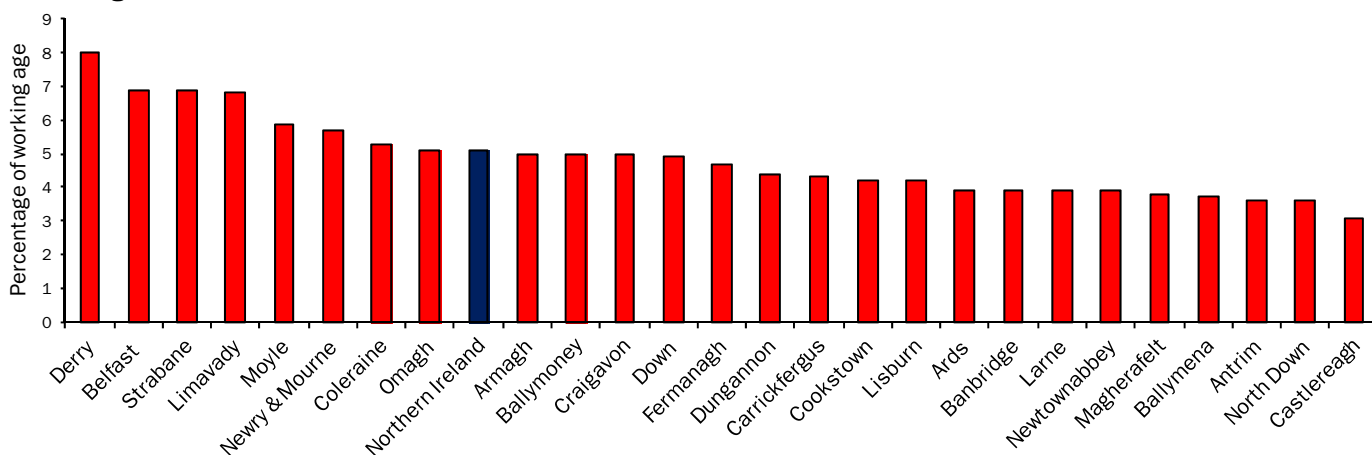
Employment and Training Measures

The Department for Employment and Learning (DEL) provides a number of services and programmes to help jobseekers find work. In September 2008 Steps to Work, the Department's new flexible approach to helping people to find work, was introduced in Northern Ireland and subsumes the main New Deal programmes. Overall, there has been an increase of 0.7% (82 persons) to 12,101 over the year to December 2011 in the number of those claimants who are eligible for mandatory participation on Steps to Work. However, anyone over 18 years old (or lone parents aged 16 years old or over) who is not working (or working less than 16 hours each week) is eligible. Steps to Work and New Deal statistics are currently accessible via the DEL web link below:

[Steps to Work / New Deal statistics](#)

Unadjusted Claimant Count Rates By District Council Area

Figure 3



Redundancies

There were 693 proposed redundancies notified during the period mid December 2011 to mid January 2012. This compares to 137 proposed redundancies that were notified in the previous monthly period. The current number of proposed redundancies is the highest since April 2009.

There were 245 confirmed redundancies in the month of December (Figure 5). Over the latest twelve month period there were a total of 1,728 confirmed redundancies, a decrease of 18% from the previous year (2,096).

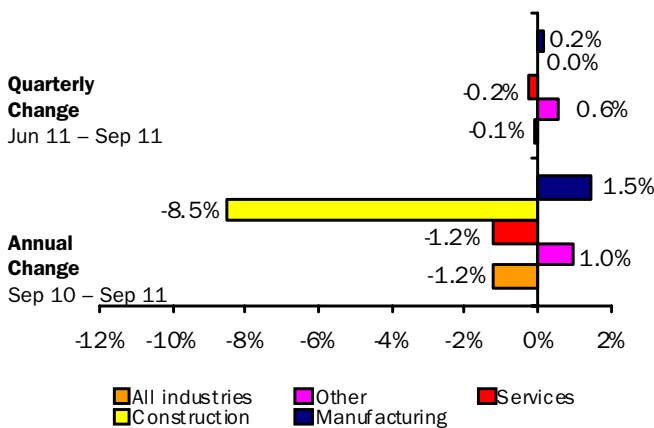
Over the latest twelve month period there were a total of 2,008 proposed redundancies, a decrease of 37% from the previous year (3,205). Currently there are 1,190 outstanding redundancies (that is, proposed but not confirmed), which is 0.5% lower than this time last year (1,196).

Note that since all proposed redundancies do not actually take place, the confirmed total provides a better indication of real job losses.

Quarterly Employment Survey

The QES provides an estimate of the number of jobs (rather than persons in employment) and is the preferred measure of change in employee jobs. The estimated seasonally adjusted employee jobs total in Northern Ireland at September 2011 was 698,390. This represents a decrease of 750 jobs from the revised figure for the previous quarter and a decrease of 8,670 jobs over the year (see Section 9 for details of QES revisions).

Annual and Quarterly changes in employee jobs (seasonally adjusted *)
Figure 4

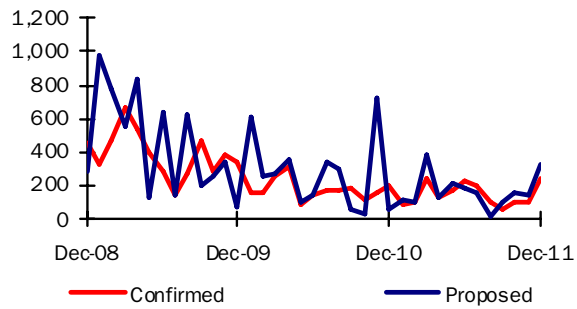


*Please see QES further info (Section 9)

The seasonally adjusted quarterly change consisted of increases in Manufacturing (+130) and Other industries (+120). Construction did not change over the quarter, while Services experienced a decrease (-990). Over the same period the private sector increased by 1,120 jobs whilst the public sector decreased by 1,900 jobs.

Confirmed and Proposed Redundancies
December 08 - December 11

Figure 5

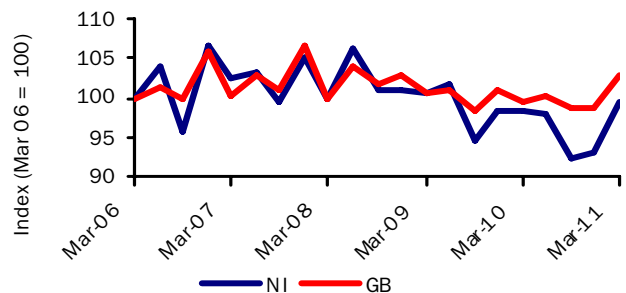


Hours Worked

The total workforce hours worked per week in Northern Ireland in March 2011 was estimated at 25.9 million hours, representing an increase of 1.2% over the year (compared with an increase of 3.2% in GB). Between March 2006 and March 2011, NI's total workforce hours worked per week decreased by 0.4%, compared with an increase of 2.9% in GB (Figure 6). In the three months to October 2011, the average actual weekly hours worked in NI was 32.7 hours – similar to the UK average (31.7) for the period.

Index of total workforce hours worked per week, NI & GB

Figure 6



Source: Employment, Earnings and Productivity Division, ONS

Annual Survey of Hours and Earnings (ASHE)

Earnings results for April 2011, which were released on 23rd November 2011, show that yearly growth in median gross weekly earnings for all employees (i.e. both full- and part-time) in NI was 1.5% (to £360.0) compared to the UK, where earnings remained the same (at £403.9). NI full-time employees' gross weekly earnings at April 2011 were £450.6, which was 90.0% of the figure in the UK (£500.7). NI full-time earnings increased by 3.0% over the period, compared with an increase of 0.4% in the UK.

Full-time weekly private sector earnings increased by 3.5% to £394.2 and part-time earnings increased by 3.8% to £124.6 over the year in NI. This resulted in a narrowing of the NI/UK private sector pay gap to 82.8% of the UK figure.

Labour Force Survey

2

Background

The Labour Force Survey (LFS) is a sample survey carried out by interviewing individuals about their personal circumstances and work. It provides a rich source of information on the labour force using internationally agreed definitions. However, the estimates from it are subject to sampling error and care should be taken when making inferences from them (see section 9 for details).

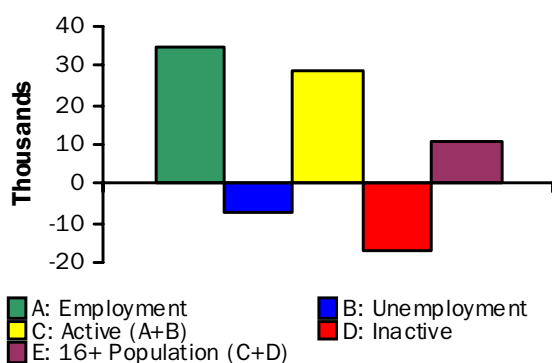
Labour Market Summary (seasonally adjusted)

The latest seasonally adjusted Labour Force Survey estimates for September - November 2011 (see Table 2) estimated the unemployment rate at 6.8% (59,000 persons), down 0.7 percentage points from the previous quarter. Employment was estimated to have increased by 4,000 (0.5%) over the quarter to 803,000.

Labour Market change over the year

In the year to September - November 2011 (see Figure 7), LFS figures show an increase of 35,000 in total employment, a decrease of 7,000 in unemployment, leading to a rise of 29,000 in the economically active population (figures may not sum due to rounding). The number economically inactive decreased by 17,000 over the year.

**Labour Market Structure
Change over the year
Figure 7**



Employment

Latest seasonally adjusted estimates show that there were 803,000 persons in employment, which represents a rise of 4.6% (35,000 persons) over the year. Of the total, 52% (421,000) were male and 48% (382,000) were female.

There was an annual increase of 2.1% in the estimate for male employment and an increase of 7.6% in female employment over the year.

Economic Inactivity

The number of economically inactive persons in the period September - November 2011 was estimated at 547,000. This figure includes those people that are past retirement age and are unlikely to re-engage with the labour market. Therefore it is the economically inactive of working age (i.e. those aged 16 – 64) that are of most interest to labour market analysts. At September - November 2011, there were an estimated 313,000 economically inactive people aged 16-64 in NI. Of the total, 39% (123,000) were male and 61% (190,000) were female.

To provide a more detailed analysis, the results below are unadjusted for seasonality, unless otherwise stated.

Unadjusted figures show that 84% of the economically inactive of working age do not want a job, while the remaining 16% want work, but are not actively seeking or available to start work.

**Economically Inactive, aged 16-64
Reason for not wanting work
Figure 8**

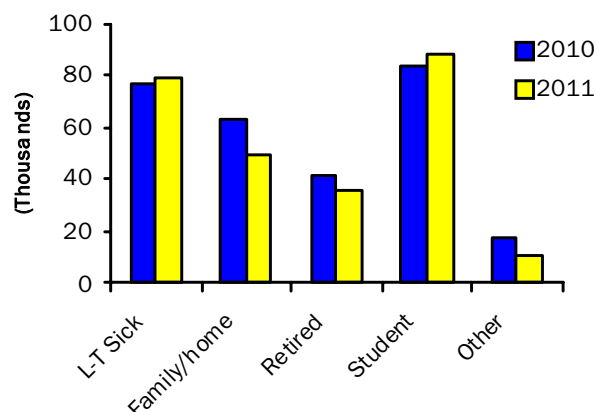


Figure 8 shows the reason given by these people for not wanting work. The largest categories were students (88,000), the long-term sick (79,000) and those looking after family/home (49,000). Among these categories, the largest change over the year occurred with those who were looking after family/home (-14,000 or -23%).

Labour Market Structure – Seasonally adjusted
Table 2

(Thousands/Percentage)

| | Total aged 16 and over | Total persons of working age 16-64 | All aged 16+ | | | | | All working age 16-64 | |
|--------------------------|------------------------|------------------------------------|---------------------------|---------------------|------------|-----------------------|-----------------------|-------------------------|---------------------------|
| | | | Total economically active | Total in employment | Unemployed | Economically inactive | Unemployment rate (%) | Activity rate 16-64 (%) | Employment rate (%) 16-64 |
| | A | B | C | D | E | F | G | H | I |
| ALL PERSONS | | | | | | | | | |
| Sep-Nov 2008 | 1,373 | 1,137 | 816 | 780 | 36 | 557 | 4.4 | 70.4 | 67.3 |
| Sep-Nov 2009 | 1,386 | 1,144 | 822 | 767 | 55 | 564 | 6.7 | 70.3 | 65.5 |
| Sep-Nov 2010 | 1,398 | 1,150 | 833 | 768 | 65 | 565 | 7.8 | 71.0 | 65.3 |
| Dec-Feb 2011 | 1,401 | 1,152 | 842 | 781 | 61 | 559 | 7.3 | 71.9 | 66.6 |
| Mar-May 2011 | 1,404 | 1,153 | 864 | 803 | 61 | 540 | 7.1 | 73.3 | 68.0 |
| Jun-Aug 2011 | 1,407 | 1,155 | 865 | 799 | 65 | 542 | 7.6 | 73.0 | 67.3 |
| Sep-Nov 2011 | 1,409 | 1,156 | 862 | 803 | 59 | 547 | 6.8 | 72.9 | 67.8 |
| Change on Quarter | 3 | 1 | -3 | 4 | -7 | 5 | -0.7 | -0.1 | 0.5 |
| Change on Year | 11 | 5 | 29 | 35 | -7 | -17 | -1.0 | 1.9 | 2.5 |
| MALES | | | | | | | | | |
| Sep-Nov 2008 | 666 | 563 | 448 | 420 | 28 | 218 | 6.3 | 77.9 | 73.0 |
| Sep-Nov 2009 | 673 | 567 | 447 | 406 | 41 | 226 | 9.1 | 76.8 | 69.6 |
| Sep-Nov 2010 | 679 | 570 | 458 | 413 | 46 | 221 | 9.9 | 78.4 | 70.4 |
| Dec-Feb 2011 | 681 | 570 | 458 | 417 | 41 | 223 | 9.0 | 78.9 | 71.7 |
| Mar-May 2011 | 682 | 571 | 466 | 426 | 40 | 217 | 8.6 | 79.9 | 73.0 |
| Jun-Aug 2011 | 684 | 572 | 461 | 418 | 43 | 223 | 9.2 | 78.3 | 70.8 |
| Sep-Nov 2011 | 686 | 573 | 461 | 421 | 40 | 224 | 8.6 | 78.6 | 71.7 |
| FEMALES | | | | | | | | | |
| Sep-Nov 2008 | 707 | 574 | 368 | 360 | 8 | 339 | 2.1 | 63.1 | 61.7 |
| Sep-Nov 2009 | 713 | 577 | 375 | 360 | 15 | 338 | 3.9 | 64.0 | 61.5 |
| Sep-Nov 2010 | 719 | 581 | 375 | 355 | 20 | 344 | 5.3 | 63.7 | 60.3 |
| Dec-Feb 2011 | 720 | 581 | 384 | 364 | 20 | 336 | 5.3 | 65.0 | 61.5 |
| Mar-May 2011 | 721 | 582 | 398 | 377 | 21 | 323 | 5.3 | 66.9 | 63.2 |
| Jun-Aug 2011 | 723 | 582 | 404 | 381 | 23 | 319 | 5.6 | 67.8 | 63.9 |
| Sep-Nov 2011 | 724 | 583 | 401 | 382 | 19 | 323 | 4.7 | 67.3 | 64.1 |

Relationship between columns: A=C+F; C=D+E; G=E/C, H=economically active of working age/total population of working age, I=in employment of working age/total population of working age, * **A and B are underlying population estimates and are therefore not seasonally adjusted.**

The estimates above have been revised to incorporate latest population figures - see note on revisions policy in Section 9.

Working age rates based on 16-64 population for both males and females - see Section 9 for details.

Figures may not sum due to rounding. * - sample too small for a reliable estimate.

Labour Market Structure – Sample of data available on website

Table 3

| Table Name | Description | File Size |
|------------|---|-----------|
| 2.1a | <u>Labour Market Structure - Seasonally Adjusted</u> | 22KB |
| 2.1b | <u>Labour Market Structure</u> | 20KB |
| 2.2 | <u>Economic Activity by Age</u> | 19KB |
| 2.3 | <u>Economic Activity Rates by Age</u> | 19KB |
| 2.4a | <u>Economically Inactive Who Want Work</u> | 20KB |
| 2.4b | <u>Economically Inactive Who Do Not Want Work</u> | 18KB |
| 2.5 | <u>Economic Inactivity by Age</u> | 18KB |
| 2.6 | <u>Employment by Category</u> | 18KB |
| 2.7 | <u>Actual Weekly Hours of Work</u> | 17KB |
| 2.8 | <u>Employment by Age</u> | 18KB |
| 2.9 | <u>Unemployment by Age</u> | 17KB |
| 2.10 | <u>Unemployment by Duration</u> | 18KB |
| 2.11 | <u>International Comparisons of Employment and Unemployment</u> | 23KB |
| 2.12 | <u>Comparisons of Working Age Rates</u> | |
| | <u>Notes and Definitions</u> | 16KB |

Other Labour Force Survey Publications available on website

Table 4

| Publication title | File Size |
|---|-----------|
| LFS Labour Market Statistics (September - November 2011) | 98 KB |
| LFS Quarterly Supplement (July - September 2011) | 341 KB |
| LFS Key Data Historical Series 1992 - 2011 (please enable macros) | 1,161 KB |
| LFS Historical Data 1984 - 1991 | 76 KB |
| Women in Northern Ireland Publication September 2011 | 270 KB |
| Labour Force Survey (LFS) Local Area Database 2010 | 659KB |
| | |
| LFS Archive data | ** |

Claimant Count

3

Unadjusted Claimant Count

The claimant count in NI at December 2011 was 59,113 (6.7% of the workforce), a decrease of 0.4% (260) over the previous month. There was an increase of 3.9% (2,231) over the year and the rate increased by 0.3 percentage points. Five years ago the total was 25,702 (2.9%). (The seasonally adjusted claimant count increased by 100 from the previous month's revised figure.)

Youth Claimants

17,630 under 25's (29.8% of all claimants) were claiming benefits in December 2011, representing a decrease of 2.1% (386 claimants) over the month and an increase of 1.2% (212) over the year. Youth claimants represent 2.0% of the workforce.

Long-term Claimants

At December 2011, 14,837 (25.1% of all claimants) were claiming benefit for a year or more, representing an increase of 1.0% (140 claimants) over the month and an increase of 1.6% (239) over the year. Long-term claimants represent 1.7% of the workforce.

Flows out from Job Seekers Allowance

The success rate of job seekers leaving the count to obtain employment in December 2011 increased by 1.5 percentage points since the same time last year. Of the 7,855 flows from the count in December 2011, 3,365 (42.8%) found employment, compared to 3,010 (41.3%) of the 7,280 claimants who left the count in December 2010. This compares to 36.9% three months ago and 34.2% six months ago.

In the period from December 2010 to December 2011 the highest proportion (42.8%) of persons leaving JSA to find employment was in December 2011, while in July 2011 the proportion finding employment was at its lowest (30.2%). The highest proportion (18.5%) of persons leaving JSA to enter education or training occurred in October 2011. Those who left JSA to claim other benefits varied between 3.1% and 4.4% in the period. Those who left JSA because they failed to sign peaked at 36.0% in January 2011.

Flows on to Job Seekers Allowance

Of the 7,710 claimants who joined the count in December 2011, 38.8% were under 25, 26.9% were aged between 25-34 years, 16.2% were aged between 35-44 years, 12.6% were aged between 45-54 years and 5.6% were 55 and over. In December 2011, 5,510 males joined the count (71.5%) compared to 2,200 females (28.5%).

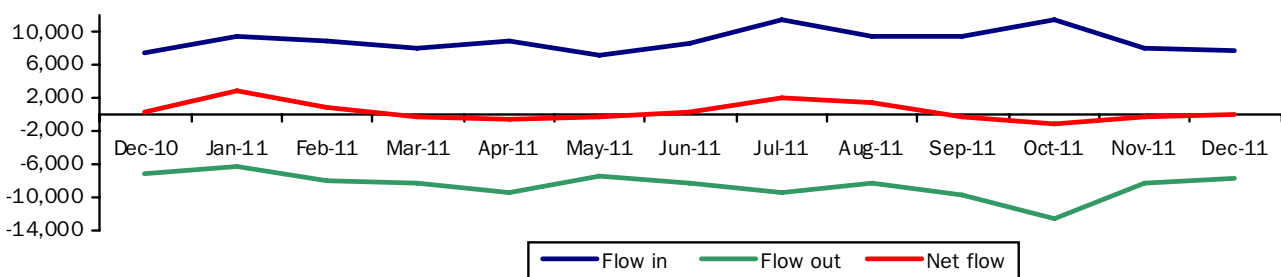
Net Flow

There was a net flow of persons out from Job Seekers for 7 months and a net flow onto Job Seekers for 6 months between December 2010 and December 2011. Net flows off Jobseekers peaked in October 2011 with a net off-flow of 1,295 persons, while net flows onto Jobseekers peaked in January 2011 with a net on-flow of 2,915.

Further information on flows data is available in section 9.

Flows in and out from JSA

Figure 9



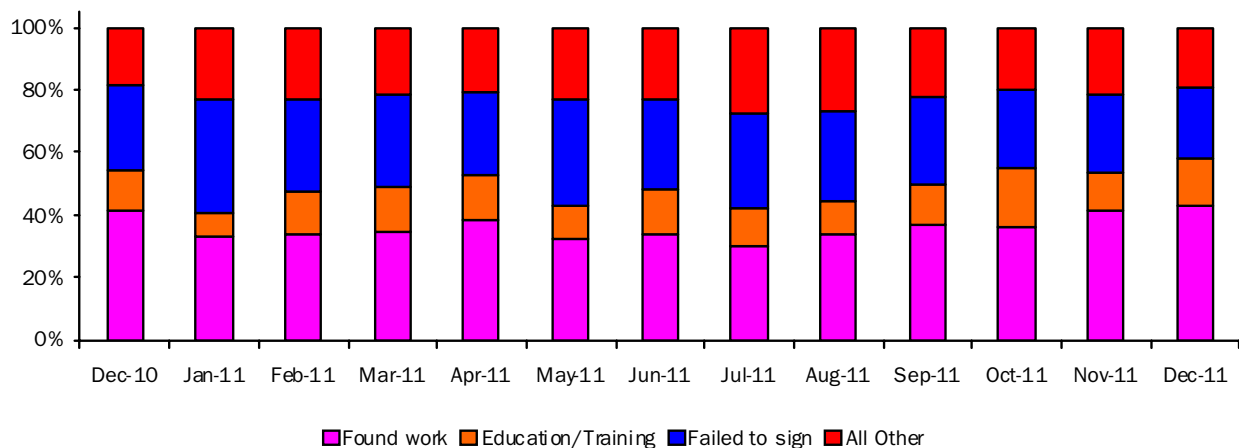
Claimant Count by District Council Area – December 2011
Number, Rate and % change over month and year (including jobs density indicator at 2009*)
Table 5

| District | Number of Claimants | | | % Of Working Age | | | Change over month | | Change over Year | | Jobs Density |
|-----------------|---------------------|---------------|---------------|------------------|------------|------------|-------------------|-------------|------------------|------------|--------------|
| | Males | Females | All | Males | Females | All | Number | % | Number | % | Indicator* |
| Antrim | 890 | 347 | 1,237 | 5.1 | 2.0 | 3.6 | -17 | -1.4 | 11 | 0.9 | 0.89 |
| Ards | 1,395 | 566 | 1,961 | 5.6 | 2.2 | 3.9 | 11 | 0.6 | 65 | 3.4 | 0.41 |
| Armagh | 1,327 | 547 | 1,874 | 7.1 | 2.9 | 5.0 | 12 | 0.6 | 96 | 5.4 | 0.66 |
| Ballymena | 1,045 | 448 | 1,493 | 5.2 | 2.2 | 3.7 | 1 | 0.1 | 56 | 3.9 | 0.89 |
| Ballymoney | 709 | 268 | 977 | 7.1 | 2.8 | 5.0 | 5 | 0.5 | 41 | 4.4 | 0.46 |
| Banbridge | 894 | 310 | 1,204 | 5.7 | 2.0 | 3.9 | -9 | -0.7 | 30 | 2.6 | 0.46 |
| Belfast | 8,996 | 3,237 | 12,233 | 10.5 | 3.6 | 6.9 | -78 | -0.6 | 512 | 4.4 | 1.29 |
| Carrickfergus | 754 | 365 | 1,119 | 5.9 | 2.8 | 4.3 | -4 | -0.4 | 103 | 10.1 | 0.38 |
| Castlereagh | 947 | 360 | 1,307 | 4.6 | 1.7 | 3.1 | -56 | -4.1 | 83 | 6.8 | 0.73 |
| Coleraine | 1,334 | 539 | 1,873 | 7.6 | 3.0 | 5.3 | -6 | -0.3 | 112 | 6.4 | 0.71 |
| Cookstown | 667 | 337 | 1,004 | 5.6 | 2.9 | 4.2 | 10 | 1.0 | -68 | -6.3 | 0.62 |
| Craigavon | 2,157 | 859 | 3,016 | 7.1 | 2.8 | 5.0 | 35 | 1.2 | 105 | 3.6 | 0.72 |
| Derry | 4,047 | 1,687 | 5,734 | 11.5 | 4.6 | 8.0 | -121 | -2.1 | 502 | 9.6 | 0.69 |
| Down | 1,627 | 579 | 2,206 | 7.1 | 2.6 | 4.9 | 19 | 0.9 | 29 | 1.3 | 0.51 |
| Dungannon | 1,077 | 566 | 1,643 | 5.6 | 3.1 | 4.4 | 10 | 0.6 | -39 | -2.3 | 0.69 |
| Fermanagh | 1,388 | 523 | 1,911 | 6.7 | 2.6 | 4.7 | -16 | -0.8 | 219 | 12.9 | 0.68 |
| Larne | 573 | 223 | 796 | 5.7 | 2.2 | 3.9 | 6 | 0.8 | 31 | 4.1 | 0.51 |
| Limavady | 1,086 | 407 | 1,493 | 9.7 | 3.7 | 6.8 | -19 | -1.3 | -10 | -0.7 | 0.45 |
| Lisburn | 2,238 | 967 | 3,205 | 6.1 | 2.5 | 4.2 | -22 | -0.7 | 251 | 8.5 | 0.64 |
| Magherafelt | 773 | 332 | 1,105 | 5.2 | 2.4 | 3.8 | 29 | 2.7 | 1 | 0.1 | 0.60 |
| Moyle | 455 | 177 | 632 | 8.5 | 3.3 | 5.9 | 3 | 0.5 | 10 | 1.6 | 0.44 |
| Newry & Mourne | 2,659 | 1,009 | 3,668 | 8.3 | 3.2 | 5.7 | -27 | -0.7 | -83 | -2.2 | 0.62 |
| Newtownabbey | 1,491 | 600 | 2,091 | 5.7 | 2.2 | 3.9 | -41 | -1.9 | 58 | 2.9 | 0.65 |
| North Down | 1,258 | 557 | 1,815 | 5.0 | 2.2 | 3.6 | 22 | 1.2 | 59 | 3.4 | 0.52 |
| Omagh | 1,239 | 514 | 1,753 | 7.2 | 3.0 | 5.1 | 15 | 0.9 | 68 | 4.0 | 0.67 |
| Strabane | 1,241 | 522 | 1,763 | 9.7 | 4.2 | 6.9 | -22 | -1.2 | -11 | -0.6 | 0.48 |
| | | | | | | | | | | | |
| NI TOTAL | 42,267 | 16,846 | 59,113 | 7.3 | 2.9 | 5.1 | -260 | -0.4 | 2,231 | 3.9 | 0.73 |

* Data relates to 2009. Jobs Density = total number of jobs in an area divided by the resident population of working age in the area

Claimant spells ended by destination

Figure 10



Occupation Data

At December 2011, 31.2% (18,315) of all claimants defined their usual (or previous) occupation as an Elementary Occupation. Elementary Occupations includes elementary agricultural, construction, process plant, goods storage, administrative, personal services, cleaning, security and sales occupations. A further 15.8% (9,280) gave their usual occupation as working in Sales and Customer Service Occupations. These two groups account for approximately one half of all claimants in December 2011. The smallest occupation group, with 1.8% (1,035) of all claimants, was Managers and Senior Officials.

Overall the NI claimant count (computerised claims only) decreased by 0.4% over the month to December 2011. Six of the nine occupational groups showed a decrease in levels with the largest decreases occurring in Professional Occupations, which decreased by 165 (10.0%), followed by Administrative and Secretarial Occupations which decreased by 135 (2.7%). The group showing the largest increase in levels was Skilled Trade Occupations, which increased by 135 (1.5%) followed by Process, Plant and Machine Operatives which increased by 125 (1.6%).

Claimant Count (unadjusted) by Usual Occupation – December 2011 (Computerised claims only)

Table 6

| Occupational Groups (Usual Occupation) | December 2011 | | Change over month | |
|--|---------------------|----------------|---------------------|-------------|
| | Number of Claimants | % of Claimants | Number of claimants | % change |
| Managers and Senior Officials | 1,035 | 1.8 | -40 | -3.7 |
| Professional Occupations | 1,485 | 2.5 | -165 | -10.0 |
| Associate Professional and Technical Occupations | 2,645 | 4.5 | -120 | -4.3 |
| Administrative and Secretarial Occupations | 4,840 | 8.2 | -135 | -2.7 |
| Skilled Trade Occupations | 9,230 | 15.7 | 135 | 1.5 |
| Personal Service Occupations | 3,815 | 6.5 | -45 | -1.2 |
| Sales and Customer Service Occupations | 9,280 | 15.8 | -100 | -1.1 |
| Process, Plant and Machine Operatives | 8,030 | 13.7 | 125 | 1.6 |
| Elementary Occupations | 18,315 | 31.2 | 100 | 0.5 |
| Not Known | 65 | 0.1 | 0 | 0.0 |
| NI Total | 58,740 | 100.0 | -235 | -0.4 |

**Claimant Count -Sample of data available on website:
Table 7**

| Table Name | Description | File Size |
|-------------------|---|------------------|
| Table 3.1 | <u>Seasonally Adjusted Claimant Count</u> | 17.5KB |
| Table 3.2 | <u>Total Claimant Count</u> | 16.0KB |
| Table 3.3 | <u>Claimant Count Trends – Seasonally Adjusted Claimant Count</u> | 18.0KB |
| Table 3.4 | <u>Claimant Count Trends – Total Claimant Count</u> | 17.0KB |
| Table 3.5 | <u>Claimant Count Trends – Long-Term Claimant Count</u> | 16.0KB |
| Table 3.6 | <u>Claimant Count Trends- Youth Claimant Count</u> | 14.5KB |
| Table 3.7 | <u>Claimant Count by Travel-to-Work-Area</u> | 19.5KB |
| Table 3.8 | <u>Claimant Count by District Council Area</u> | 21.0KB |
| Table 3.9 | <u>Claimant Count by Parliamentary Constituency Area</u> | 20.0KB |
| Table 3.10 | <u>Claimant Count by NUTSiii Area</u> | 18.5KB |
| Table 3.11 | <u>Claimant Count by Usual Occupation</u> | 17.0KB |
| Table 3.12 | <u>Outflows by Destination (including percentage recycled)</u> | 21.5KB |
| Table 3.13 | <u>Total Annual Outflows by Destination</u> | 20.0KB |
| Table 3.14 | <u>Total On Flows by District Council Area and Age</u> | 19.0KB |
| Table 3.15 | <u>Claimant Count by Ward</u> | 81.0KB |

Redundancies

4

There were 1,728 confirmed redundancies over the year to 31st December 2011, a decrease of 18% compared to the same period in the previous year (2,096). Of these, 245 confirmed redundancies took place during the calendar month of December 2011 and 93 in the previous month of November 2011. This compares to 193 in December 2010 (one year ago).

Table 8 shows the distribution of these confirmed redundancies by District Council area.

The largest number of redundancies occurred in Belfast (632), Derry (180) and Newtownabbey (140) District Council areas.

Confirmed redundancies by District Council in year to 31 December 2011

Table 8

| District Council Area | Total |
|-----------------------|-------|
| Antrim | 55 |
| Ards | 36 |
| Armagh | 26 |
| Ballymena | 58 |
| Ballymoney | 80 |
| Banbridge | 10 |
| Belfast | 632 |
| Carrickfergus | 15 |
| Castlereagh | 90 |
| Coleraine | 11 |
| Cookstown | 45 |
| Craigavon | 56 |
| Derry | 180 |
| Down | 0 |
| Dungannon | 2 |
| Fermanagh | 45 |
| Larne | 9 |
| Limavady | 0 |
| Lisburn | 32 |
| Magherafelt | 36 |
| Moyle | 0 |
| Newry & Mourne | 122 |
| Newtownabbey | 140 |
| North Down | 33 |
| Omagh | 15 |
| Strabane | 0 |
| N. Ireland | 1,728 |

Of these 1,728 confirmed redundancies, 362 or 21% were in the Manufacturing sector, with 186 redundancies (11% of all redundancies) occurring in the Manufacture of food products. A further 232 redundancies (13% of all redundancies) occurred in the Construction sector.

Altogether there are 1,190 outstanding redundancies that have been notified, but have yet to take place. This compares with 1,196 this time one year ago – a decrease of 0.5%.

Redundancies – Sample of Data Available on Website

Table 9

| Regional Redundancy data | File size |
|--|-----------|
| District Council (Jan 2000 - date) | 33.0KB |
| Parliamentary Constituency (Jan 2000 - date) | 29.0KB |
| Travel-to-Work Area (Jan 2000 - date) | 29.0KB |

| Industrial Sector | File size |
|--|-----------|
| Standard Industrial Classification (Jan 2000 - date) | 70.0KB |

Redundancy Legal Requirements

Under the Employment Rights (Northern Ireland) Order 1996 (Amended 8 October 2006) employers are only legally required to notify of impending redundancies of 20 or more employees. Employers who propose less than 20 redundancies are not included in the statistics.

Quarterly Employment Survey

5

Important Notice : Due to revisions in the QES sampling methodology, a discontinuity in the jobs series exists for all estimates from Q3 2009 onwards. For more details please follow link: <http://www.detini.gov.uk/deti-stats-index/stats-surveys/stats-qes/stats-qes-discontinuity-notice.htm>

Seasonally Adjusted

The September 2011 seasonally adjusted employee jobs figure stands at 698,390.

This represents a seasonally adjusted decrease of 0.1% (or 750 jobs) from the revised June 2011 estimate of 699,140.

Over the quarter seasonally adjusted employee jobs increased in the Manufacturing sector by 0.2% (130 jobs). "Other Industries" also increased over the quarter by 0.3% (120 jobs). The Service Sector decreased by 0.2% (990 jobs) over the quarter while there was no change in employee jobs in the Construction sector.

Unadjusted

The September 2011 seasonally unadjusted figure stands at 694,480.

This represents a decrease of 0.6% (or 3,970 jobs) from June 2011 and a decrease of 1.2% (8,650 jobs) in the past year.

Over the year, September 2010 to September 2011, the unadjusted employee jobs figure for Construction decreased by 8.5% (3,030 jobs), Service Sector employee jobs decreased by 1.2% (6,900 jobs) and Manufacturing employee jobs increased by 1.5% (1,070 jobs).

Manufacturing Employee Jobs

The level of jobs in the Manufacturing sector in both NI and GB has declined significantly over the past 10 years.

NI manufacturing jobs were in a steady decline between 2001 and 2007, with the figure levelling out to 86.5% of the 2001 figure between 2006 and 2007. Manufacturing employee jobs recorded a marked decline from 2007 reaching a low point in March 2010 which was 74.8% of the September 2001 figure. Since then, Manufacturing employee jobs have increased by 2.4% to now stand at 76.6% of the September 2001 figure.

Manufacturing jobs in GB have been in sharp decline from 2001 and the 2011 estimate stands at 65% of the 2001 level.

Changes in the Structure of Manufacturing Jobs (NI)

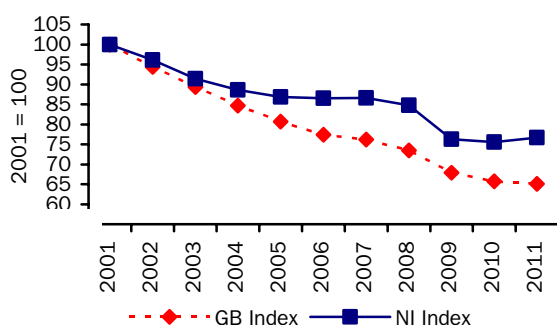
Over the period 2001-2011, Manufacturing jobs in NI decreased by 22,730, with 17 of the 23 manufacturing divisions recording a decrease. The largest decrease occurred in the Manufacture of wearing apparel, which recorded 5,840 fewer jobs. There were 4,190 fewer jobs in the Manufacture of textiles, 3,960 fewer in the Manufacture of computer, electronic and optical products, 1,840 fewer in the Manufacture of other transport equipment and 1,750 fewer in the Manufacture of motor vehicles, trailers and semi-trailers.

However, these decreases were partially offset by increases in the Manufacture of fabricated metal products, except machinery and equipment (800), in the Manufacture of basic pharmaceutical products and pharmaceutical preparations (690), in the Repair and installation of machinery and equipment (330) and also in Manufacture of food products (110).

The large decline in the Manufacture of Textiles, Wearing Apparel and Leather Products sectors has impacted on the structure of Northern Ireland Manufacturing jobs. In 2001 13.3% of Manufacturing jobs were located in the Textiles, Wearing Apparel and Leather Products sectors; by 2011 this had fallen to 3.6%.

Manufacturing jobs for NI & GB indexed (September of each year) *

Figure 11



*GB figures for 2011 refer to June 2011

Quarterly Employment Survey
Northern Ireland Seasonally Adjusted Employee Jobs* September 2011
Table 10

| | | | | % change in total | |
|---------------------------|----------------|----------------|----------------|--------------------|-----------------|
| | Males | Females | All persons | since last quarter | since last year |
| Manufacturing | 58,220 | 16,130 | 74,350 | 0.2 | 1.5 |
| Construction ¹ | 28,670 | 4,150 | 32,830 | 0.0 | -8.5 |
| Services | 229,580 | 341,750 | 571,330 | -0.2 | -1.2 |
| Other ² | 17,010 | 2,880 | 19,890 | 0.6 | 1.0 |
| Total | 333,490 | 364,910 | 698,390 | -0.1 | -1.2 |

¹ Figures for females in the construction industry are not seasonally adjusted

² Covers Industry Sections A, B, D and E which have not been seasonally adjusted

* Figures are rounded to the nearest 10 and may not sum due to rounding

Northern Ireland Employee Jobs* - Seasonally Adjusted Series
Table 11

| | | Manufacturing | Construction ¹ | Services | Other Industries ² | All Industries | Public ³ | Private ³ |
|------|-----------|---------------|---------------------------|----------|-------------------------------|----------------|---------------------|----------------------|
| 2005 | March | 85,290 | 37,770 | 551,200 | 22,430 | 696,690 | 218,610 | 477,910 |
| | June | 84,150 | 38,750 | 551,860 | 21,130 | 695,880 | 219,680 | 476,190 |
| | September | 84,190 | 39,310 | 553,780 | 21,310 | 698,600 | 221,020 | 478,040 |
| | December | 83,770 | 41,150 | 557,350 | 21,390 | 703,650 | 221,040 | 482,310 |
| 2006 | March | 84,070 | 41,790 | 559,270 | 21,390 | 706,520 | 220,550 | 485,750 |
| | June | 83,610 | 42,300 | 560,100 | 20,830 | 706,840 | 220,630 | 486,340 |
| | September | 83,860 | 42,690 | 562,730 | 20,910 | 710,190 | 221,140 | 489,510 |
| | December | 84,010 | 43,140 | 564,580 | 20,990 | 712,720 | 220,460 | 491,800 |
| 2007 | March | 83,840 | 43,460 | 567,030 | 21,050 | 715,370 | 220,170 | 495,020 |
| | June | 84,110 | 44,710 | 571,100 | 20,890 | 720,810 | 220,670 | 500,390 |
| | September | 83,920 | 45,320 | 575,330 | 21,070 | 725,650 | 219,530 | 506,610 |
| | December | 83,500 | 46,820 | 578,800 | 20,170 | 729,290 | 219,770 | 508,830 |
| 2008 | March | 83,680 | 45,860 | 582,690 | 20,150 | 732,380 | 219,780 | 512,530 |
| | June | 83,400 | 44,860 | 584,500 | 20,370 | 733,130 | 218,360 | 515,130 |
| | September | 82,200 | 43,500 | 581,680 | 20,440 | 727,810 | 216,310 | 511,950 |
| | December | 80,170 | 41,670 | 579,390 | 20,040 | 721,270 | 224,070 | 496,530 |
| 2009 | March | 78,140 | 39,420 | 577,330 | 19,960 | 714,850 | 224,350 | 490,440 |
| | June | 75,360 | 38,210 | 577,090 | 19,910 | 710,570 | 224,940 | 485,900 |
| | September | 73,980 | 36,780 | 578,150 | 19,800 | 708,710 | 225,660 | 483,450 |

DISCONTINUITY IN SERIES – PLEASE SEE NOTE AT BEGINNING OF SECTION 5

| | | | | | | | | |
|------|-----------------------|--------|--------|---------|--------|---------|---------|---------|
| | December [^] | 73,480 | 37,190 | 582,030 | 19,810 | 712,500 | 224,480 | 487,390 |
| 2010 | March | 73,190 | 37,000 | 580,980 | 19,800 | 710,960 | 223,470 | 487,480 |
| | June | 73,390 | 36,220 | 580,450 | 19,540 | 709,600 | 221,850 | 488,040 |
| | September | 73,260 | 35,860 | 578,260 | 19,680 | 707,070 | 219,820 | 487,610 |
| | December | 74,430 | 33,660 | 574,630 | 19,670 | 702,390 | 220,180 | 481,560 |
| 2011 | March | 74,110 | 33,410 | 574,070 | 19,650 | 701,240 | 219,040 | 482,170 |
| | June | 74,220 | 32,830 | 572,320 | 19,770 | 699,140 | 217,880 | 481,610 |
| | September | 74,350 | 32,830 | 571,330 | 19,890 | 698,390 | 215,970 | 482,730 |

¹ Figures for females in the construction industry are not seasonally adjusted

² Covers Industry Sections A, B, D and E which have not been seasonally adjusted

³ Public and Private splits may not sum to total.

* Figures are rounded to the nearest 10 and may not sum due to rounding

Quarterly Employment Survey (QES) – Sample of data available on website

**The Northern Ireland Quarterly Employment Survey
Table 12**

| Table Name | Description | File Size |
|------------|--|-----------|
| 5.1 | NI Employee Jobs - Seasonally Adjusted September 2011 | 15.5 KB |
| 5.2 | NI Employee Jobs - Seasonally Adjusted 1998 – 2011 | 15.5 KB |
| 5.3 | NI Employee Jobs - Unadjusted 1998 – 2011 | 15.5 KB |
| 5.4 | NI Employee Jobs (Unadjusted) by Industry Section – September 2011 | 15.5 KB |
| 5.5 | NI Public Sector Jobs (Unadjusted) – September 2011 | 13.5 KB |
| 5.6 | NI Employee Jobs by Industry Section (Unadjusted) September 2010, June 2011 and September 2011 | 15.5 KB |
| 5.7 | Self Employment Jobs in NI by Broad Industry Group (June of Each Year) | 15.0 KB |
| 5.8 | Workforce in Employment 1983 – 2011 | 15.0 KB |
| 5.9 | NI Employee Jobs by 2-digit SIC07 Class –September 2011 | 31.5 KB |

**Other Quarterly Employment Survey Publications available on website
Table 13**

| Publication title | File Size |
|---|-----------|
| Quarterly Employment Survey (QES) Supplement – September 2011 | 493 KB |

Annual Survey of Hours and Earnings

6

The Annual Survey of Hours and Earnings (ASHE) provides information on employees' hourly, weekly and annual earnings by gender and working pattern. It has been designed by the Office for National Statistics and is carried out in Northern Ireland by NISRA statisticians. Both median and mean results are reported by ASHE, where the mean is the arithmetic average while the median is the value below which 50 per cent of employees fall. The median is often preferred for earnings data as it is influenced less by extreme values and because of the skewed distribution of earnings data.

The median gross weekly earnings for all (i.e. both full- and part-time) employees in NI in 2011 was £360.0, some 10.9% lower than the UK (£403.9). This represented a growth in NI median earnings for all employees of 1.5% over the year to April 2011, compared to the UK, where earnings remained static.

NI full-time employees' median gross weekly earnings at April 2011 were £450.6, which was 90.0% of the figure in the UK (£500.7). NI full-time earnings increased by 3.0% over the period, compared to an increase of 0.4% in the UK. The median gross weekly part-time earnings in NI at April 2011 was £151.6, up 1.7% over the year compared with an increase of 0.2% in the UK (to £154.0).

Median gross weekly earnings for full-time employees in the NI private sector increased at a faster rate (3.5% to £394.2) than in the UK, where growth was 0.8% over the year (to £476.2). This represented a narrowing of the NI/UK private sector pay gap, from 80.6% of the UK figure at April 2010 to 82.8% at April 2011.

There has been a narrowing of the gender pay gap for all employees in NI over the period 2010-2011. Female median hourly earnings excluding overtime were 91.9% of male earnings at April 2011, compared to 91.2% a year earlier. The NI gender pay gap remains less marked than in the UK, where the equivalent female to male earnings ratio was 80.5% at April 2011. It should also be noted that gender pay differences continue to exist for various occupational and industry groupings in NI, as evidenced by weekly and annual earnings trends.

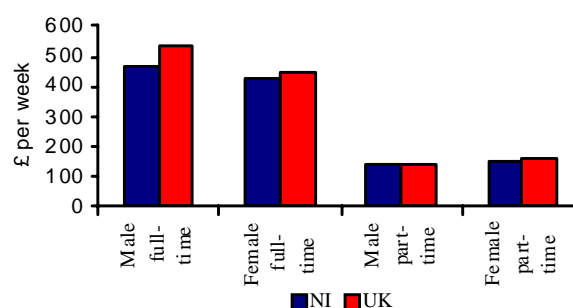
Please note, changes in NI earnings over the year and relative to the UK can be influenced by a range

of factors including the timing of pay settlements, the extent of overtime, and differences in the composition of the workforce. As ASHE is a sample survey, results are also subject to an associated level of sampling variability. Further information is available in section 12 of the ASHE publication:

[Background notes for ASHE](#)

Median gross weekly earnings by full-/part-time and gender, April 2011

Figure 12



Median and mean gross weekly earnings 2007-11

Table 14

| £ per week | Median | | | Mean | | |
|------------------|-----------|-----------|-------|-----------|-----------|-------|
| | Full-time | Part-time | All | Full-time | Part-time | All |
| April 2011 | | | | | | |
| Men | 463.5 | 141.4 | 416.4 | 558.2 | 180.7 | 497.2 |
| Women | 427.8 | 156.1 | 306.0 | 486.8 | 185.2 | 357.8 |
| All | 450.6 | 151.6 | 360.0 | 528.8 | 184.0 | 426.7 |
| April 2010 | | | | | | |
| Men | 455.6 | 132.4 | 410.8 | 537.1 | 191.2 | 487.8 |
| Women | 409.4 | 152.2 | 297.7 | 469.9 | 180.7 | 347.4 |
| All | 437.3 | 149.1 | 354.7 | 509.6 | 183.3 | 416.6 |
| % Change 10 - 11 | | | | | | |
| Men | 1.7 | 6.8 | 1.4 | 3.9 | -5.4 | 1.9 |
| Women | 4.5 | 2.6 | 2.8 | 3.6 | 2.5 | 3.0 |
| All | 3.0 | 1.7 | 1.5 | 3.8 | 0.4 | 2.4 |
| April 2009 | | | | | | |
| Men | 460.0 | 150.0 | 416.6 | 543.6 | 190.1 | 498.5 |
| Women | 402.6 | 161.4 | 297.2 | 460.6 | 187.7 | 350.4 |
| All | 437.1 | 159.1 | 354.6 | 509.1 | 188.3 | 422.9 |
| April 2008 | | | | | | |
| Men | 439.8 | 139.9 | 404.3 | 520.7 | 214.3 | 479.2 |
| Women | 385.2 | 152.6 | 287.0 | 438.4 | 188.8 | 335.0 |
| All | 417.7 | 150.0 | 345.0 | 487.0 | 195.0 | 406.4 |
| April 2007 | | | | | | |
| Men | 421.7 | 126.9 | 394.2 | 501.4 | 178.6 | 463.7 |
| Women | 367.7 | 145.3 | 272.6 | 427.9 | 173.8 | 321.1 |
| All | 400.3 | 140.8 | 329.9 | 471.7 | 174.8 | 391.3 |

Average full-time earnings by occupation, April 2011

Table 15

| | Count (thousands) | Median gross weekly pay (£) | Mean gross weekly pay (£) | Median total weekly hours | Mean total weekly hours |
|--|-------------------|-----------------------------|---------------------------|---------------------------|-------------------------|
| Managers and Senior Officials | 73 | 639.2 | 733.8 | 38.0 | 39.0 |
| Professional Occupations | 84 | 704.4 | 761.5 | 37.0 | 37.0 |
| Associate Professional and Technical Occupations | 81 | 559.4 | 603.1 | 37.6 | 39.6 |
| Administrative and Secretarial Occupations | 64 | 366.9 | 382.6 | 37.5 | 38.5 |
| Skilled Trades Occupations | 58 | 412.0 | 442.8 | 40.0 | 41.4 |
| Personal Service Occupations | 31 | 319.9 | 344.6 | 37.5 | 39.2 |
| Sales and Customer Service Occupations | 24 | 263.6 | 291.7 | 38.6 | 38.6 |
| Process, Plant and Machine Operatives | 51 | 384.0 | 403.0 | 40.7 | 43.8 |
| Elementary Occupations | 39 | 294.8 | 311.1 | 40.0 | 40.3 |

Average full-time earnings by industry, April 2011 (based on the 2007 UK Standard Industrial Classification)

Table 16

| | Count (thousands) | Median gross weekly pay (£) | Mean gross weekly pay (£) | Median total weekly hours | Mean total weekly hours |
|---|-------------------|-----------------------------|---------------------------|---------------------------|-------------------------|
| Agriculture, forestry and fishing | x | 289.2 | 313.9 | 39.9 | 42.1 |
| Mining and quarrying | x | x | x | 40.0 | 43.2 |
| Manufacturing | 76 | 432.6 | 491.1 | 40.0 | 41.5 |
| Electricity, gas, steam, and air conditioning supply | 5 | 628.2 | 734.4 | 37.0 | 38.1 |
| Water supply; sewerage, waste management and remediation activities | x | 451.3 | 452.9 | 40.8 | 42.9 |
| Construction | 27 | 446.4 | 536.5 | 40.0 | 42.5 |
| Wholesale and retail trade; repair of motor vehicles and motorcycles | 72 | 341.0 | 429.0 | 39.2 | 39.5 |
| Transportation and storage | 16 | 451.5 | 509.7 | 40.0 | 43.6 |
| Accommodation and food services activities | 15 | 252.5 | 312.2 | 37.5 | 38.2 |
| Information and communication | 16 | 564.6 | 591.0 | 37.6 | 38.4 |
| Financial and insurance activities | 14 | 574.8 | 653.1 | 35.0 | 35.7 |
| Real estate activities | 6 | 440.0 | 485.8 | 37.1 | 38.0 |
| Professional, scientific and technical activities | 19 | 462.8 | 531.0 | 37.5 | 37.4 |
| Administrative and support service activities | 19 | 329.8 | 377.9 | 40.0 | 41.1 |
| Public administration and defence; compulsory social security | 64 | 550.5 | 618.4 | 42.0 | 42.8 |
| Education | 55 | 690.5 | 651.2 | 32.5 | 34.4 |
| Human health and social work activities | 80 | 481.4 | 552.8 | 37.5 | 38.2 |
| Arts, entertainment and recreation | 8 | 374.8 | 449.6 | 37.5 | 39.3 |
| Other service activities | 7 | 465.1 | 509.0 | 37.4 | 38.2 |
| Activities of households as employers; undifferentiated goods and services-producing activities of households for own use | : | | | | |

x Coefficient of Variation too large to provide a reliable estimate.

: Not applicable.

Please note that the figures in the above two tables relating to numbers employed relate to PAYE employees as defined by ASHE and should not be considered an accurate estimate of employee job counts.

Sample of ASHE data available on website

Table 17

| Table name | Description | File size |
|------------|---|-----------|
| 6.1 | ASHE 2003 Headline Data for Key Variables | 163 KB |
| 6.2 | ASHE 2004 Headline Data for Key Variables excluding supplementary information | 51 KB |
| 6.3 | ASHE 2004 Headline Data for Key Variables | 52 KB |
| 6.4 | ASHE 2005 Headline Data for Key Variables | 52 KB |
| 6.5 | ASHE 2006 Headline Data for Key Variables excluding methodological changes | 168 KB |
| 6.6 | ASHE 2006 Headline Data for Key Variables | 176 KB |
| 6.7 | ASHE 2007 Headline Data for Key Variables | 165 KB |
| 6.8 | ASHE 2008 Headline Data for Key Variables | 165 KB |
| 6.9 | ASHE 2009 Headline Data for Key Variables | 52 KB |
| 6.10 | ASHE 2010 Headline Data for Key Variables - revised | 54KB |
| 6.11 | ASHE 2011 Headline Data for Key Variables | 54KB |

Vacancy Statistics and Employment & Training

7

Vacancy Statistics and Employment & Training Measures
Participation in the Department for Employment and Learning Schemes to November 2011
Table 18

| | Steps to Work (2) | New Deal (2, 3) | Future Managers | Employment Support | Training for Success (4, 5) | Jobskills (4, 5) |
|-------------|----------------------|--------------------|--------------------|-----------------------|-----------------------------------|---------------------|
| <u>2009</u> | | | | | | |
| November | 7,900 | 750 | 150 | 750 | 16,550 | 1,400 |
| <u>2010</u> | | | | | | |
| November | 12,050 | 1,300 | 250 | 700 | 18,400 | 150 |
| December | 12,250 | 1,300 | 200 | 700 | 18,400 | 150 |
| <u>2011</u> | | | | | | |
| Janaury | 12,900 | 1,250 | 200 | 700 | 18,100 | 150 |
| February | 13,550 | 1,400 | 200 | 700 | 17,950 | 100 |
| March | 14,900 | 1,400 | 200 | 700 | 18,400 | 100 |
| April | 15,000 | 1,400 | 200 | 650 | 18,750 | 50 |
| May | 15,400 | 1,450 | 200 | 650 | 18,300 | 50 |
| June | 15,600 | 1,400 | 200 | 650 | 17,900 | 50 |
| July | 15,350 | 950 | 200 | 650 | 17,450 | 50 |
| August | 15,700 | 800 | 200 | 650 | 16,250 | 0 |
| September | 16,250 | 600 | 200 | 650 | 19,850 | 0 |
| October | 17,200 | 400 | 150 | 650 | 21,100 | 0 |
| November | - | 300 | 150 | 650 | 20,650 | 0 |

Figures in the above table are not National Statistics.

(1) Figures are rounded to the nearest fifty.

(2) On 29th September 2008, Steps to Work was widely introduced in NI and subsumed the main New Deal programmes. However, Steps to Work was not introduced in the Foyle and Lisnagelvin office areas until 25th July 2011. Steps to Work figures relate to the last Friday of each month and are revised on a monthly basis. The figures for August to October 2011 are provisional and subject to change. Statistics for November 2011 will be published in February 2012.

(3) Includes New Deal 18-24 and 25+. New Deal figures relate to the last Sunday of each month and are revised on a monthly basis.

(4) Training for Success (TfS), was introduced in September 2007, and will ultimately replace Jobskills. In September 2008, TfS was re-structured into two separate provisions, TfS and ApprenticeshipsNI. The reported TfS figures include both provisions. In response to the economic downturn an intervention measure, Programme-Led Apprenticeships, was introduced on 7th September 2009, and the figures for this programme are now included under the TfS heading.

(5) November 2011 Jobskills and TfS figures are as at the 20th November 2011.

Vacancies data

Headline figures are presented for vacancies which have been notified to JobCentres / Jobs & Benefits offices (J&Bo) of the Department for Employment and Learning (DEL). The statistics do not represent the total unsatisfied demand for staff by employers within Northern Ireland, but are only those vacant positions notified by employers to DEL. Vacancy inflow and outflow figures are shown on a standardised basis, where values are converted to a standard 4 1/3 week period.

Standardised Vacancies notified (Inflow)

There were 5,262 vacancies notified in the period ending 4th November 2011. This was 15% higher than the number of vacancies notified in November 2010 (4,573) and an increase of 2% on the number of vacancies notified in November 2009 (5,165).

Standardised Vacancies filled and cancelled (Outflows)

The number of placed and cancelled vacancies in the period ending 4th November 2011 was 5,235. This was an increase of 5% from November 2010 (5,004) and a decrease of 9% from the same period two years previously (5,735).

Unfilled Vacancies

A total of 7,300 vacancies remained unfilled on 4th November 2011, an increase of 14% on the unfilled total in November 2010 (6,381) and an increase of 4% on the amount unfilled in November 2009 (7,010). Of the 7,300 unfilled vacancies, 3,058 were available to jobseekers, 54% more than in November 2010 (1,988).

Vacancies Notified, Outflow and Vacancies Unfilled: November 2009 to November 2011⁽¹⁾

Table 19

| Report Period Ending | | Vacancies notified (Inflows) (2) | | | Vacancies Filled and Cancelled (Outflows) (3) | | | Unfilled Vacancies (4) | | | |
|----------------------|--------|----------------------------------|--------------------------|---|---|--------------------------|---|------------------------|---------------------------------------|---------------|---------------------------------------|
| | | Level Unadjusted (5) | Level (standardised) (6) | Change on same month in previous year (7) | Level unadjusted (5) | Level (standardised) (6) | Change on same month in previous year (7) | Level Unadjusted | Change on same month in previous year | Of which live | Change on same month in previous year |
| 2009 | 06-Nov | 5,960 | 5,165 | -17% | 6,617 | 5,735 | -24% | 7,010 | -28% | - | - |
| 2010 | 05-Nov | 4,221 | 4,573 | -11% | 4,619 | 5,004 | -13% | 6,381 | -9% | 1,988 | - |
| | 03-Dec | 3,257 | 3,528 | -21% | 4,557 | 4,937 | -5% | 5,081 | -20% | 1,506 | - |
| 2011 | 07-Jan | 2,320 | 2,011 | -30% | 4,123 | 3,573 | -22% | 3,278 | -24% | 1,190 | - |
| | 04-Feb | 3,502 | 3,794 | -17% | 2,537 | 2,748 | -9% | 4,243 | -26% | 1,712 | - |
| | 04-Mar | 3,503 | 3,795 | -23% | 2,708 | 2,934 | -29% | 5,038 | -21% | 1,807 | - |
| | 08-Apr | 4,720 | 4,091 | -11% | 4,349 | 3,769 | -21% | 5,409 | -13% | 1,866 | - |
| | 06-May | 2,857 | 3,095 | -32% | 3,376 | 3,657 | -22% | 4,890 | -20% | 1,445 | -30% |
| | 03-Jun | 3,594 | 3,894 | -25% | 3,620 | 3,922 | -18% | 4,864 | -24% | 1,653 | -31% |
| | 08-Jul | 4,040 | 3,501 | -10% | 3,978 | 3,448 | -30% | 4,926 | -10% | 1,512 | -9% |
| | 05-Aug | 3,191 | 3,457 | -12% | 3,285 | 3,559 | -15% | 4,832 | -6% | 1,743 | -9% |
| | 02-Sep | 4,788 | 5,187 | 1% | 3,417 | 3,702 | 10% | 6,203 | -9% | 2,245 | -6% |
| | 07-Oct | 6,116 | 5,301 | 11% | 5,044 | 4,371 | -9% | 7,275 | 7% | 2,589 | 25% |
| | 04-Nov | 4,857 | 5,262 | 15% | 4,832 | 5,235 | 5% | 7,300 | 14% | 3,058 | 54% |

Figures in the above table are not National Statistics.

(1) From August 2010 publication onwards, vacancy statistics are subject to revision each month to take account of amendments to the live system.

(2) Vacancies notified (inflow) are all vacancy positions notified and added to JobCentres / J&Bos of DEL.

(3) Outflows are those vacancies that have been notified to JobCentres / J&Bos of DEL and have been placed or cancelled. This includes vacancies filled by JobCentres / J&Bos or other recruitment channels and vacancies that have been withdrawn.

(4) Vacancies unfilled are those vacancies notified to JobCentres / J&Bos of DEL remaining unfilled on the count date (the first Friday after the first Thursday of every month). Unfilled vacancies can be split into live and pending. Live vacancies are those for which job seekers can apply. Vacancies are pending while DEL staff await feedback from employers. Live vacancies are only available from May 2010, and therefore change on same month in previous year is only available from May 2011.

(5) Monthly flow data is collected for a 4 or 5 week period between count dates. Unadjusted levels reflect either a 4 or 5 week period.

(6) Standardised levels convert volumes to a standard 4 1/3 week month. Figures are not seasonally adjusted.

(7) Percentage change calculated using non-rounded standardised figures.

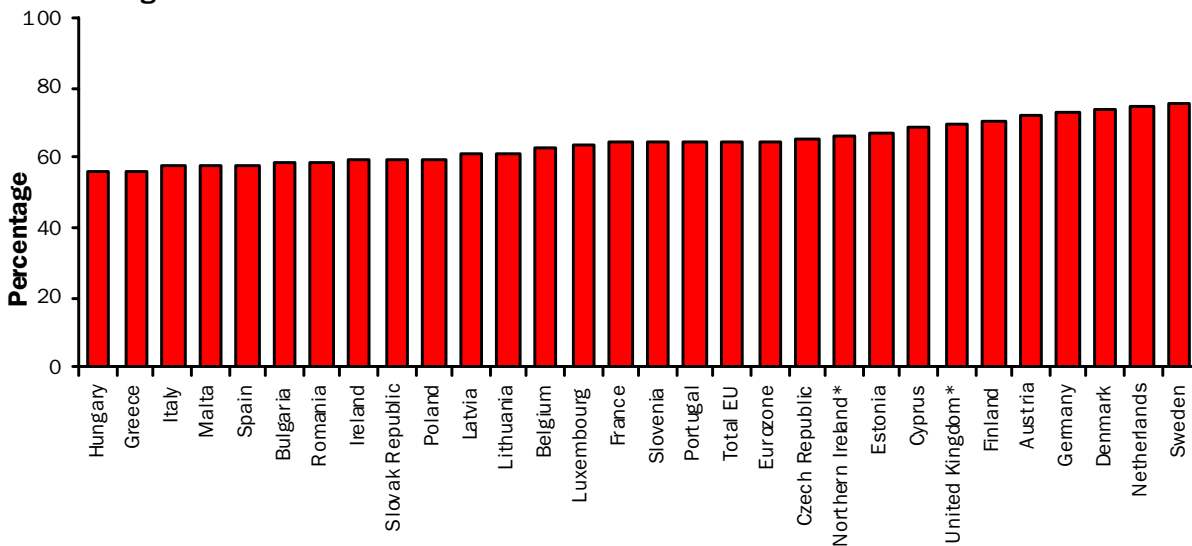
For further details of Vacancy Statistics and Employment and Training Measures visit the DEL website at the following link: <http://www.delni.gov.uk/index/statsandresearch.htm> or alternatively contact the Department for Employment and Learning (DEL) by telephoning (028) 9025 7714.

International - Regional Analysis

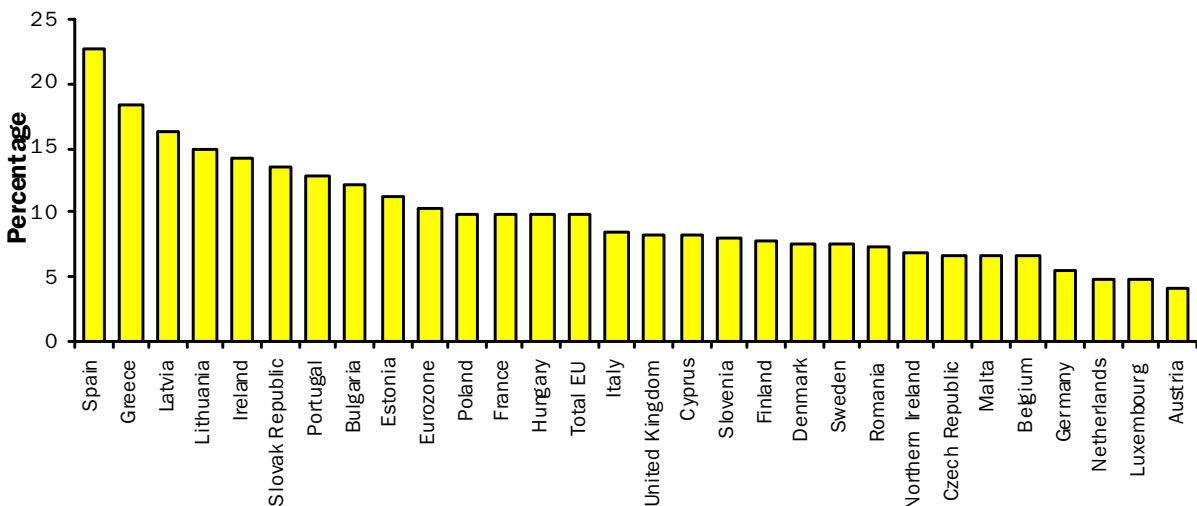


International Comparisons of ILO Employment and Unemployment

ILO Employment Rates (%) - Unadjusted
Figure 13



Unemployment Rates (%) - Seasonally Adjusted
Figure 14



Source: Eurostat

* A NI employment rate comparable to the EUROSTAT figures has been produced from the Calendar Quarter 2 2011 LFS dataset. It is based on the population aged 15-64 and differs from the working age rates published elsewhere in this publication, which take account of both the school-leaving and state pension age. The employment rate for the UK as published by EUROSTAT differs from the working age rate (16-64) published by ONS for the same reason. Figures behind the charts and further information can be found at; [International Comparisons of Employment](#)

Seasonally Adjusted Regional Summary, September - November 2011
Table 20

| | Labour Force Survey (LFS) ¹ | | | | | | Employee Jobs ³ | Claimant count rate (%) ⁴ | Claimant count level Percentage Change over the year | Claimant count level Percentage Change over the month | Jobs Density Indicator ⁵ |
|------------------------|--|----------------------------|--------------|----------------------------|-----------------------|----------------------------|----------------------------|--------------------------------------|--|---|-------------------------------------|
| | Employment | | Unemployment | | Economically Inactive | | | | | | |
| | Rate | Annual Change ² | Rate | Annual Change ² | Rate | Annual Change ² | | | | | |
| North East | 65.1 | -0.9 | 12.0 | 2.3 | 25.8 | -1.0 | 1,008 | 7.3 | 12.3 | 0.2 | 0.66 |
| North West | 68.8 | -0.5 | 8.9 | 1.2 | 24.4 | -0.4 | 2,883 | 5.8 | 13.1 | 0.3 | 0.75 |
| Yorkshire & the Humber | 67.5 | -0.4 | 10.1 | 1.0 | 24.8 | -0.2 | 2,115 | 6.2 | 12.3 | 0.3 | 0.73 |
| East Midlands | 71.1 | 0.5 | 8.3 | 0.1 | 22.4 | -0.7 | 1,853 | 4.9 | 12.2 | 0.0 | 0.74 |
| West Midlands | 67.5 | -0.4 | 9.2 | -0.6 | 25.5 | 1.0 | 2,239 | 6.2 | 7.9 | -0.1 | 0.75 |
| East | 74.3 | 0.4 | 7.2 | 0.7 | 19.8 | -1.0 | 2,388 | 4.0 | 9.7 | 0.2 | 0.76 |
| London | 67.9 | -0.7 | 9.9 | 0.8 | 24.5 | 0.0 | 4,207 | 4.9 | 11.1 | 0.4 | 0.88 |
| South East | 74.5 | -0.6 | 6.4 | 0.3 | 20.3 | 0.3 | 3,634 | 3.3 | 9.2 | 0.2 | 0.80 |
| South West | 73.8 | -0.4 | 6.5 | 0.6 | 20.9 | -0.1 | 2,096 | 3.4 | 11.3 | 0.4 | 0.82 |
| England | 70.4 | -0.4 | 8.5 | 0.6 | 23.0 | -0.1 | 22,423 | 4.9 | 11.0 | 0.2 | 0.78 |
| Wales | 68.2 | 0.8 | 8.9 | 0.5 | 25.1 | -1.0 | 1,144 | 5.5 | 9.2 | -0.6 | 0.71 |
| Scotland | 70.9 | 0.1 | 8.6 | 0.2 | 22.3 | -0.4 | 2,272 | 5.3 | 2.2 | -1.0 | 0.78 |
| Great Britain | 70.3 | -0.3 | 8.5 | 0.6 | 23.0 | -0.2 | 25,838 | 4.9 | 10.0 | 0.1 | 0.78 |
| N Ireland | 67.8 | 2.5 | 6.8 | -1.0 | 27.1 | -1.9 | 698 | 6.9 | 4.1 | 0.2 | 0.73 |
| United Kingdom | 70.3 | -0.2 | 8.4 | 0.5 | 23.1 | -0.2 | 26,537 | 5.0 | 9.8 | 0.1 | 0.77 |

¹ Employment and economic inactivity rates are based on working age population (16-64); Unemployment rates are based on 16+ population.

² Data refer to percentage point change of respective rate.

³ As at September 2011 (thousands).

⁴ As at December 2011: percentage of the workforce.

⁵ Not seasonally adjusted – data relates to 2009. Jobs Density – total number of jobs in an area divided by the resident population of working age in that area.

Further Information

9

DEFINITIONS

Unemployment

The definition of unemployment used in the Labour Force Survey (LFS) is in accordance with that promulgated by the International Labour Organisation (ILO). The ILO unemployed include those without a job who were able to start work in the two weeks following their LFS interview and had either looked for work in the four weeks prior to interview or were waiting to start a job they had already obtained.

Unemployment rate - the percentage of economically active people who are unemployed. Please note that it is possible for the number of unemployed to increase and the unemployment rate to fall during the same period, as the latter measure is a ratio e.g. if the number of economically active has increased at a faster rate than the number unemployed, the unemployment rate will fall.

Employment

The definition of ILO employed applies to anyone (aged 16 or over) who has done at least one hour's paid work in the week prior to interview, or has a job they are temporarily away from (e.g. on holiday). Also included are people who do unpaid work in a family business and people on Government-supported employment training schemes.

The ILO measures are particularly useful for examining short term and long term trends over time and key LFS time series data are available both seasonally adjusted and unadjusted.

Sampling variability

The LFS is a sample survey, and as such, estimates obtained from it are subject to sampling variability. If we drew many samples each would give a different result. The ranges shown for the LFS data in table 1 represent 95% confidence intervals i.e. we would expect that in 95% of samples the range would contain the true value. These confidence intervals have been calculated using data that is unadjusted for seasonality, with the relevant sampling errors produced applied to the seasonally adjusted data.

If the 'annual change' for an estimate has increased or decreased by more than the 'sampling variability of the change', this change would be statistically significant. The annual changes for the main LFS categories of employment,

unemployment and economic inactivity were tested for statistical significance. The results showed that the annual change in the employment level and rate, for September - November 2011, were statistically significant at the 95% level.

Please see attached link for further LFS notes and definitions:

[Labour Force Survey Notes and Definitions](#)

LFS revisions

LFS data from the period June to August 2001 onwards have been revised to incorporate the latest population estimates. The magnitude of the revisions are relatively small, with the revisions to the unemployment rate falling within +/- 0.1 percentage points and the working age employment rate within +/- 0.2 percentage points. The procedures being applied to the NI LFS results are consistent with those applied by the Office for National Statistics to other UK regions

More information on the revision policy concerning labour market statistics can be found through the link below:

[Labour market statistics revisions policy](#)

Definition of 'working age'

The 'working age' definition, used in the calculation of employment and economic inactivity rates, was changed in August 2010 to include those aged from 16 to 64 for both men and women. Previously these rates were based on upper age limits of 59 for women and 64 for men, reflecting the state pension ages in the UK. However, between 2010 and 2020, the state pension age for women is increasing (by one month every two months) from 60 to 65, thereby making a change to the definition necessary.

The change in definition follows a UK wide public consultation on the issue and the approach being applied to Northern Ireland labour market statistics mirrors the approach that the Office for National Statistics (ONS) are applying to other UK regions.

Please see link for further details:

[Change in female state pension age](#)

For a limited period, employment and economic inactivity rates based on the old working age definition (i.e. 16-59/64) will be available on the DETI website at:

[Comparison of working age rates.](#)

Please note that there are no implications for the headline unemployment rate, which will continue to be based on the economically active population aged 16 and over.

Hours Worked

The workforce hours data contained in Section 1 of this report is currently sourced to the Regional Workforce Hours series, which produced by the Office for National Statistics (ONS). Due to current resource pressures, ONS have indicated that they may have to discontinue the publication of this data series. Once a final decision is made, the Hours Worked section will be amended accordingly.

Claimant Count definition

Claimant Count figures are derived from records of claimants held at Social Security Offices. The term 'claimants' in the claimant count is used to include those who claim Jobseeker's Allowance (JSA) and National Insurance credits. The figures include severely disabled claimants, but exclude students seeking vacation work and the temporarily stopped. The Claimant Count is a very up-to-date measure of those eligible to claim a specific unemployment related benefit and data are available for a range of geographical sub-regions (e.g. District Council Areas, Parliamentary Constituency Areas, Travel-to-Work Areas and Wards). It also provides seasonally adjusted and unadjusted data and as a result is a useful measure for examining both short-term and long-term trends.

Seasonally Adjusted claimant count figures are provisional when published and subject to revision, mainly the following month and are only available at Northern Ireland level. Seasonally Adjusted totals are subject to an annual update (usually April) to take account of latest assessment trends.

The 'Flows' data contained in section three is sourced to the Office of National Statistics (via the NOMIS website). Claimants appear as flows if they have either joined or left the count in the reference period or if they joined the count in a previous period, but were only processed during the reference period.

Annual Survey of Hours and Earnings

Please note, changes in NI earnings over the year and relative to the UK can be influenced by a range of factors including the timing of pay settlements, the extent of overtime, and differences in the composition of the workforce. As ASHE is a sample survey, results are also subject to an associated level of sampling variability. Further information is available at:

[ASHE statistical bulletin](#)

[Definitions for the Annual Survey of Hours and Earnings ASHE](#)

Quarterly Employment Survey (QES) Revisions

QES estimates are revised quarterly to reflect the latest information provided to the Department by employers. Estimates can be revised back to the last Census of Employment reference period (September 2009). The March 2011 estimate first published in June 2011 has subsequently been revised down (0.3%). For further details of QES revisions please see link below.

At the latest review, Construction and Other industries showed no seasonality.

[Background notes to the Quarterly Employment Survey \(QES\)](#)

Government Targets

Data from the Labour Force Survey (LFS) and the Quarterly Employment Survey (QES) are used in the measurement of targets set in the Northern Ireland Executive's Programme for Government (PSA targets) See [Programme for Government](#) for further details. The LFS and QES data feed into productivity estimates for NI and are therefore indirectly used to measure progress towards PSA 1: Productivity growth. In addition, LFS data is used to measure the proportion of the working age population qualified to Skill levels 2 and 3. This data therefore feeds into the measurement of PSA 2: Skills for prosperity.

Details of progress towards these targets can be found at:

[Programme for Government Delivery Report](#)

For further information:

AN ELECTRONIC VERSION OF THIS DOCUMENT WITH ASSOCIATED HYPERLINKS IS AVAILABLE ON THE HOME PAGE OF THE BRANCH WEBSITE AT:

www.statistics.detini.gov.uk

You can also contact Economic & Labour Market Statistics Branch by: -

Writing to:

Hugh Mc Nickle
Economic & Labour Market Statistics Branch,
Room 110, Netherleigh, Massey Avenue, Belfast
BT4 2JP.

Tel: (028) 9052 9439

Fax: (028) 9052 9658

Textphone: (028) 9052 9304

Email: statistics@detini.gov.uk