



Department of  
**Finance and  
Personnel**  
[www.dfpni.gov.uk](http://www.dfpni.gov.uk)

**Labour Market**

**Statistics Bulletin**

# Monthly Labour Market Report

**April 2011**



## **A NATIONAL STATISTICS PUBLICATION**

The United Kingdom Statistics Authority has designated these statistics as National Statistics, in accordance with the Statistics and Registration Service Act 2007 and signifying compliance with the Code of Practice for Official Statistics.

Designation can be broadly interpreted to mean that the statistics:

- meet identified user needs;
- are well explained and readily accessible;
- are produced according to sound methods, and
- are managed impartially and objectively in the public interest.

Once statistics have been designated as National Statistics it is a statutory requirement that the Code of Practice shall continue to be observed.

Northern Ireland Statistics &  
Research Agency

# Monthly Labour Market Report

April 2011

Crown Copyright

From the 1st April 2011, the responsibility for the collection of data and production of official labour market and economic statistics transferred from the Department of Enterprise, Trade and Investment to the Northern Ireland Statistics and Research Agency (DFP). This transfer mirrored the position in Great Britain where most business surveys and labour market data collection and statistical production have been transferred from the departments with policy responsibilities to the Office for National Statistics (ONS). However, it is important to note that there are no planned changes to the production of economic and labour market statistical publications and outputs as a result of the transfer.

For further information please contact:

Gerard Colgan  
Economic and Labour Market Statistics Branch, Room 110,  
Netherleigh, Massey Avenue, Belfast BT4 2JP

Tel: (028) 9052 9523  
Fax: (028) 9052 9658  
Textphone: (028) 9052 9304  
Email: [gerard.colgan@dfpni.gov.uk](mailto:gerard.colgan@dfpni.gov.uk)

# Contents

**1**

Labour Market  
**Pages 1-3**

**2**

Labour Force Survey.  
**Pages 4-6**

**3**

Claimant Count  
**Pages 7-10**

**4**

Redundancies  
**Page 11**

**5**

Quarterly  
Employment Survey -  
QES  
**Pages 12-14**

**6**

Annual Survey of  
Hours and Earnings -  
ASHE  
**Pages 15-16**

**7**

Vacancy Statistics  
and Employment &  
Training measures  
**Page 17-18**

**8**

International-  
Regional Analysis  
**Pages 19-20**

**9**

Further Information  
**Page 21-22**

# Labour Market

# 1

Seasonally adjusted Labour Force Survey (LFS) estimates for Northern Ireland for the period December 2010 - February 2011 showed a decrease over the quarter in the number of unemployed and economically inactive persons, while there was an increase in the number of employed persons. The seasonally adjusted claimant count in March 2011 increased by 100 over the month to 59,000. The Department was notified of 299 proposed redundancies in the latest reference period and 228 confirmed redundancies in March 2011.

## Employment

The number of persons in employment in the period December 2010 - February 2011 was estimated at 779,000. This estimate was up 12,000 over the quarter and up 4,000 over the year. The employment rate for those aged 16-64 was estimated at 66.4%, up 1.1 percentage points over the quarter and up 0.3 percentage points over the year. However, NI's employment rate remained well below the UK average (70.7%) and was the second lowest rate among the twelve UK regions.

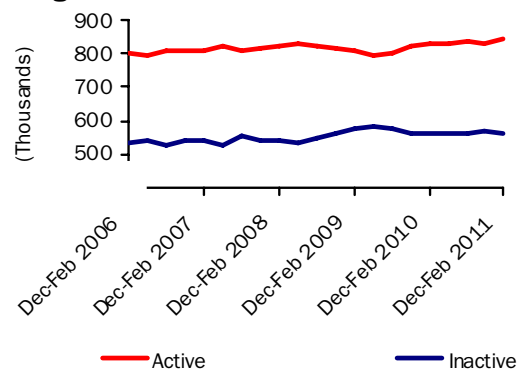
## Unemployment

The unemployment rate for the period December 2010 - February 2011 was estimated at 7.3%, down 0.5 percentage points over the quarter, but up 0.8 percentage points over the year. The number of unemployed persons was estimated at 62,000, down 4,000 over the quarter, but up 8,000 over the year.

Unadjusted figures show that 47.2% of the unemployed have been unemployed for 1 year or more – up 5.9 percentage points over the year. They also estimate the unemployment rate for 18-24 year olds at 20.3% – up 5.9 percentage

## Seasonally Adjusted Labour Market Summary for Northern Ireland (16+)

Figure 1



points over the year.

## Economically Inactive

The seasonally adjusted number of economically inactive persons in the period December 2010 - February 2011 was estimated at 560,000. This figure fell by 5,000 over the quarter, but was unchanged over the year.

The NI economic inactivity rate for those aged 16-64 stands at 28.3%. This is significantly higher than the UK average rate (23.2%) and is the highest of the twelve UK regions. Unadjusted figures estimate that 29% of the economically inactive, aged 16-64, in NI are sick/disabled, 28% are students, 24% are looking after the family/home, 12% are retired and 7% are 'other' reason.

Unadjusted figures also show that while 90% of the inactive do not want work, the remaining 10% (54,000) want employment but do not satisfy the full ILO job search criteria (by actively seeking work and being available to start a job).

## Northern Ireland Labour Market Summary (seasonally adjusted)

Table 1

|                                       | Period       | Estimate | Sampling Variability of estimate | Change over year | Sampling Variability of change |
|---------------------------------------|--------------|----------|----------------------------------|------------------|--------------------------------|
| Employment                            | Dec-Feb 2011 | 779,000  | +/-23,000                        | 4,000            | +/-30,000                      |
| Unemployment                          | Dec-Feb 2011 | 62,000   | +/-11,000                        | 8,000            | +/-14,000                      |
| Economically inactive                 | Dec-Feb 2011 | 560,000  | +/-21,000                        | 0                | +/-27,000                      |
| Unemployment rate                     | Dec-Feb 2011 | 7.3%     | +/-1.3pps                        | 0.8pps           | +/-1.7pps                      |
| Employment rate <sup>1</sup>          | Dec-Feb 2011 | 66.4%    | +/-1.8pps                        | 0.3pps           | +/-2.3pps                      |
| Economic inactivity rate <sup>1</sup> | Dec-Feb 2011 | 28.3%    | +/-1.7pps                        | -0.9pps          | +/-2.2pps                      |
| Claimant Count                        | March 2011   | 59,000   |                                  | 3,300            |                                |

Note: pps = percentage points, <sup>1</sup>Rates based on 16-64 population - see Section 9 for details.

Estimates from the LFS have an associated degree of statistical error as they are based on a sample of the population. The annual changes for the main LFS categories of employment, unemployment and economic inactivity were tested for statistical significance. The results showed that none of the annual changes in the estimates were statistically significant i.e. the recorded change did not exceed the variability expected from a sample survey of this size (see table 1 and Section 9 for details).

### Unemployment Regional Comparison

The latest NI seasonally adjusted unemployment rate rate (7.3%) was lower than the overall UK average rate (7.8%) and was fourth lowest among the twelve UK regions. The NI rate was also below the European Union (9.5%) and Republic of Ireland (13.5%) rates for January 2011.

### Claimant Count

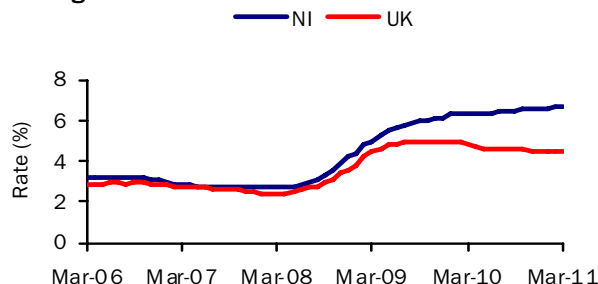
The more recent seasonally adjusted claimant count increased by 100 from the previous month's revised total. It now stands at 59,000 (6.7% of the workforce) in March 2011. The latest monthly increase was the same as the revised increase of 100 for the previous monthly period. Over the year the Claimant Count in NI has increased by 3,300 (5.9%) and the workforce unemployment rate has increased by 0.4 percentage points.

### Claimant Count Regional Comparison

The seasonally adjusted claimant count rate in NI (6.7%) was higher than the UK average rate (4.5%) and was the highest rate among the twelve UK regions. The March 2011 NI Claimant Count level increased by 0.2% (100 claimants) from last month's revised total, while the UK average increased by 0.05% (Figure 2). NI showed the fourth highest percentage monthly increase among the UK regions. Over the year the NI Claimant Count level increased by 5.9%, compared to a fall of 5.8% in the UK. The annual change in NI was the highest percentage increase among the twelve UK regions.

### Seasonally Adjusted Claimant Count Monthly Rates

Figure 2



### Claimant count rates for District Council Areas

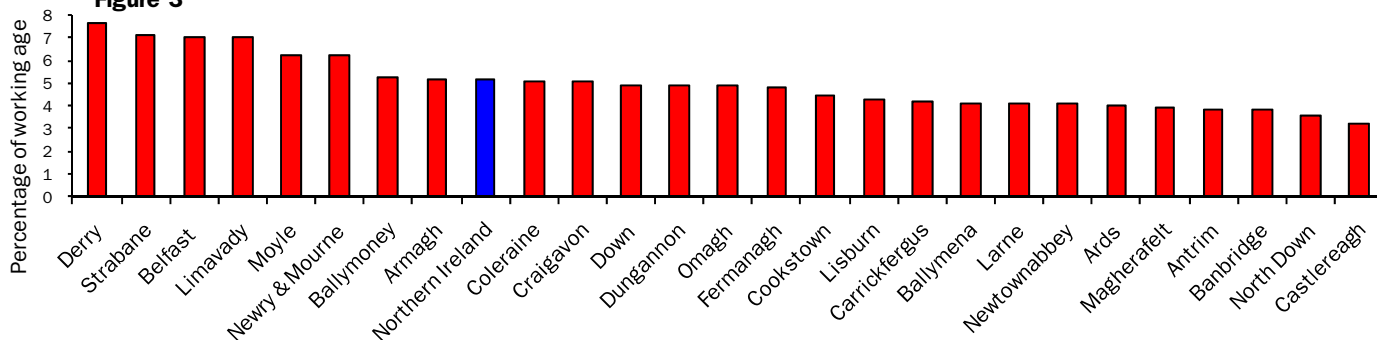
Figure 3 (unadjusted numbers as a percentage of the resident working age population) show that the highest rates at March 2011 were in Derry (7.7%), Strabane (7.1%), Belfast (7.0%) and Limavady (7.0%). Those that showed the highest percentage increase in levels over the year to March 2011 were Ards (13.2%), Armagh (12.7%) and Banbridge (11.6%). For further District Council data please see section 3 of the Labour Market Report.

### Employment and Training Measures

The Department for Employment and Learning (DEL) provides a number of services and programmes to help jobseekers find work. In September 2008 Steps to Work, the Department's new flexible approach to helping people to find work, was introduced in Northern Ireland and subsumes the main New Deal programmes. Overall, there has been an increase of 30.5% (3,088 persons) to 13,213 over the year to March 2011 in the number of those claimants who are eligible for mandatory participation on Steps to Work. However, anyone over 18 years old (or lone parents aged 16 years old or over) who is not working (or working less than 16 hours each week) is eligible. Steps to Work and New Deal statistics are currently accessible via the DEL web link below:

[Steps to Work / New Deal statistics](#)

Unadjusted Claimant Count Rates By District Council Area  
Figure 3



### Redundancies

The Department was notified of 299 proposed redundancies over the period mid March 2011 to mid April 2011. This compares to 207 proposed redundancies notified to the Department in the previous monthly period.

There were 228 confirmed redundancies in the month of March (Figure 5). Over the latest twelve monthly period there were a total of 1,937 confirmed redundancies, a decrease of 47% from the previous year (3,686). The highest number of confirmed redundancies took place in the Belfast District Council area which had 33.2% (643) of all redundancies over the year.

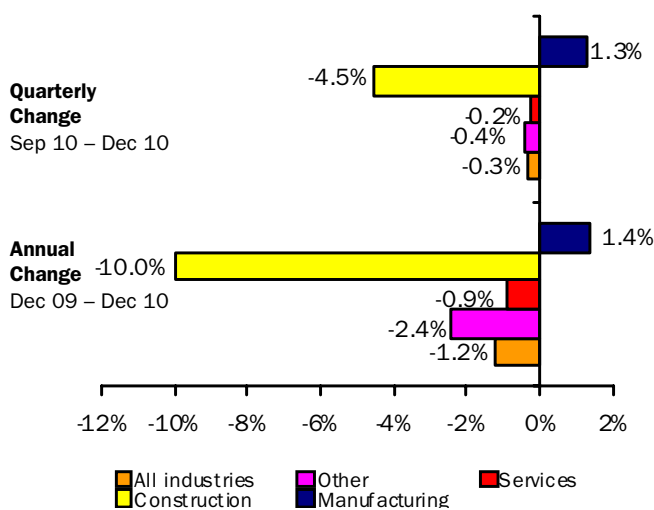
Over the latest twelve month period there were a total of 2,660 proposed redundancies, a decrease of 39% from the previous year (4,373). Currently there are 1,163 outstanding redundancies (that is, proposed but not confirmed), which is 19% lower than this time last year (1,431).

Note that since all proposed redundancies do not actually take place, the confirmed total provides a better indication of real job losses.

### Quarterly Employment Survey

The QES provides an estimate of the number of jobs (rather than persons in employment) and is the preferred measure of change in employee jobs. The estimated seasonally adjusted employee jobs total in Northern Ireland at December 2010 was 692,910. This represents a decrease of 1,880 from the revised figure for the previous quarter and a decrease of 8,200 over the year (see Section 9 for details of QES revisions).

**Annual and Quarterly changes in employee jobs (seasonally adjusted)**  
**Figure 4**

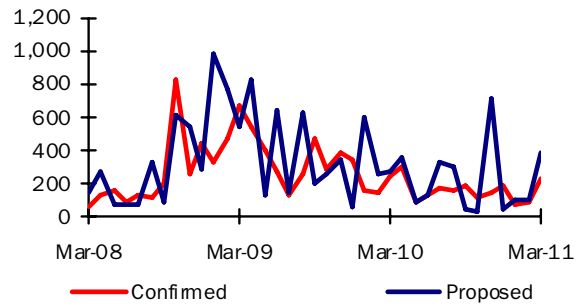


The seasonally adjusted quarterly change consisted of decreases in the Service sector (-1,270), in Construction (-1,480) and Other industries (-70). There was an increase in Manufacturing (950) over the quarter.

### Confirmed and Proposed Redundancies

March 08 - March 11

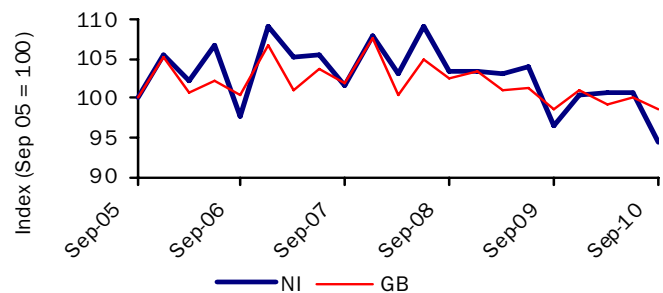
**Figure 5**



### Hours Worked

The total workforce hours worked per week in Northern Ireland in September 2010 was estimated at 24.0 million hours, representing a decrease of 2.0% over the year (compared with no change in GB). Between September 2005 and September 2010, NI's total workforce hours worked per week decreased by 5.5%, compared to a 1.3% fall in GB (Figure 6). In the three months to January 2011, the average actual weekly hours worked in NI was 31.9 hours – slightly higher than the UK average (31.0) for the period.

**Index of total workforce hours worked per week, NI & GB**  
**Figure 6**



Source: Employment, Earnings and Productivity Division, ONS

### Annual Survey of Hours and Earnings (ASHE)

Earnings results for April 2010, which were released on 8<sup>th</sup> December 2010, show that yearly growth in median gross weekly earnings for all employees (i.e. both full- and part-time) in NI was 0.6% (to £356.6) compared to 1.8% in the UK (to £404.3). NI full-time employees' gross weekly earnings at April 2010 were £440.8, which was approximately 88% of the figure in the UK (£498.8). NI full-time earnings increased by 0.8% over the period, compared with an increase of 2.1% in the UK.

Full-time weekly private sector earnings increased by 0.6% to £383.4 and part-time earnings fell by 7.1% to £120.0 over the year in NI. This resulted in a further widening of the NI/UK private sector pay gap to 81.0% of the UK figure.

# Labour Force Survey

## 2

### Background

The Labour Force Survey (LFS) is a sample survey carried out by interviewing individuals about their personal circumstances and work. It provides a rich source of information on the labour force using internationally agreed definitions. However, the estimates from it are subject to sampling error and care should be taken when making inferences from them (see section 9 for details).

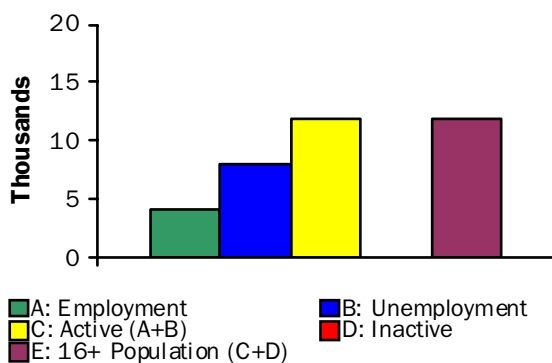
### Labour Market Summary (seasonally adjusted)

The latest seasonally adjusted Labour Force Survey estimates for December 2010 - February 2011 (see Table 2) record the unemployment rate at 7.3% (62,000 persons), down 0.5 percentage points from the previous quarter. Employment was estimated to have increased by 12,000 (1.5%) over the quarter to 779,000.

### Labour Market change over the year

In the year to December 2010 - February 2011 (see Figure 7), LFS figures show increases of 4,000 in total employment and 8,000 in unemployment, leading to a rise of 12,000 in the economically active population (figures may not sum due to rounding). The number economically inactive remained unchanged over the year.

**Labour Market Structure  
Change over the year  
Figure 7**



### Employment

Latest seasonally adjusted estimates show that there were 779,000 persons in employment, which represents a rise of 0.6% (4,000 persons) over the year. Of the total, 53% (416,000) were male and 47% (363,000) were female.

There was a rise of 1.2% in the estimate for male employment, but a decrease of 0.2% in female employment over the year.

### Economic Inactivity

The number of economically inactive persons in the period December 2010 - February 2011 was estimated at 560,000. This figure includes those people that are past retirement age and are unlikely to re-engage with the labour market. Therefore it is the economically inactive of working age (i.e. those aged 16 - 64) that are of most interest to labour market analysts. At December 2010 - February 2011 there were an estimated 325,000 economically inactive people aged 16-64 in NI. Of the total, 37% (121,000) were male and 63% (204,000) were female.

**To provide a more detailed analysis, the results below are unadjusted for seasonality, unless otherwise stated.**

Unadjusted figures show that 84% of the economically inactive of working age do not want a job, while the remaining 16% want work, but are not actively seeking or available to start work.

**Economically Inactive, aged 16-64  
Reason for not wanting work  
Figure 8**

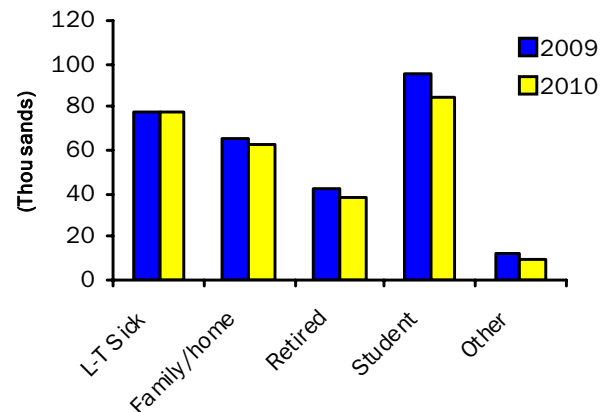


Figure 8 shows the reason given by these people for not wanting work. The largest categories were students (85,000), the long-term sick (78,000), and those looking after family/home (62,000). Among these categories, the largest change over the year occurred in those who were students (-11,000 or -11.8%).

**Labour Market Structure – Seasonally adjusted**  
**Table 2**

|                          | Total aged 16 and over | Total persons of working age 16-64 | All aged 16+              |                     |            |                       | All working age 16-64 |                         |                           |
|--------------------------|------------------------|------------------------------------|---------------------------|---------------------|------------|-----------------------|-----------------------|-------------------------|---------------------------|
|                          |                        |                                    | Total economically active | Total in employment | Unemployed | Economically inactive | Unemployment rate (%) | Activity rate 16-64 (%) | Employment rate (%) 16-64 |
|                          | A                      | B                                  | C                         | D                   | E          | F                     | G                     | H                       | I                         |
| <b>ALL PERSONS</b>       |                        |                                    |                           |                     |            |                       |                       |                         |                           |
| Dec-Feb 2008             | 1,363                  | 1,131                              | 824                       | 790                 | 34         | 539                   | 4.2                   | 71.4                    | 68.4                      |
| Dec-Feb 2009             | 1,376                  | 1,139                              | 805                       | 757                 | 48         | 572                   | 5.9                   | 69.4                    | 65.2                      |
| Dec-Feb 2010             | 1,389                  | 1,146                              | 829                       | 775                 | 54         | 560                   | 6.5                   | 70.8                    | 66.1                      |
| Mar-May 2010             | 1,392                  | 1,147                              | 833                       | 774                 | 59         | 559                   | 7.1                   | 71.2                    | 66.1                      |
| Jun-Aug 2010             | 1,395                  | 1,149                              | 838                       | 779                 | 58         | 557                   | 7.0                   | 71.5                    | 66.4                      |
| Sep-Nov 2010             | 1,398                  | 1,150                              | 833                       | 768                 | 65         | 565                   | 7.8                   | 71.0                    | 65.3                      |
| Dec-Feb 2011             | 1,401                  | 1,152                              | 841                       | 779                 | 62         | 560                   | 7.3                   | 71.7                    | 66.4                      |
| <b>Change on Quarter</b> | <b>3</b>               | <b>1</b>                           | <b>8</b>                  | <b>12</b>           | <b>-4</b>  | <b>-5</b>             | <b>-0.5</b>           | <b>0.8</b>              | <b>1.1</b>                |
| <b>Change on Year</b>    | <b>12</b>              | <b>6</b>                           | <b>12</b>                 | <b>4</b>            | <b>8</b>   | <b>0</b>              | <b>0.8</b>            | <b>0.9</b>              | <b>0.3</b>                |
| <b>MALES</b>             |                        |                                    |                           |                     |            |                       |                       |                         |                           |
| Dec-Feb 2008             | 660                    | 559                                | 453                       | 430                 | 23         | 207                   | 5.1                   | 79.1                    | 75.0                      |
| Dec-Feb 2009             | 668                    | 564                                | 440                       | 406                 | 34         | 228                   | 7.7                   | 76.3                    | 70.4                      |
| Dec-Feb 2010             | 674                    | 567                                | 451                       | 411                 | 40         | 223                   | 8.9                   | 77.3                    | 70.3                      |
| Mar-May 2010             | 676                    | 568                                | 458                       | 414                 | 44         | 218                   | 9.5                   | 78.5                    | 70.8                      |
| Jun-Aug 2010             | 678                    | 569                                | 459                       | 417                 | 41         | 219                   | 9.0                   | 78.7                    | 71.4                      |
| Sep-Nov 2010             | 679                    | 570                                | 459                       | 413                 | 45         | 220                   | 9.9                   | 78.4                    | 70.4                      |
| Dec-Feb 2011             | 681                    | 571                                | 457                       | 416                 | 41         | 223                   | 9.0                   | 78.7                    | 71.5                      |
| <b>FEMALES</b>           |                        |                                    |                           |                     |            |                       |                       |                         |                           |
| Dec-Feb 2008             | 703                    | 571                                | 371                       | 360                 | 11         | 332                   | 3.0                   | 63.8                    | 61.9                      |
| Dec-Feb 2009             | 709                    | 575                                | 365                       | 351                 | 14         | 344                   | 3.9                   | 62.6                    | 60.1                      |
| Dec-Feb 2010             | 715                    | 578                                | 377                       | 363                 | 14         | 337                   | 3.7                   | 64.4                    | 62.0                      |
| Mar-May 2010             | 716                    | 579                                | 375                       | 360                 | 15         | 341                   | 4.1                   | 64.1                    | 61.4                      |
| Jun-Aug 2010             | 717                    | 580                                | 379                       | 362                 | 17         | 339                   | 4.5                   | 64.4                    | 61.5                      |
| Sep-Nov 2010             | 719                    | 581                                | 374                       | 354                 | 20         | 345                   | 5.3                   | 63.7                    | 60.3                      |
| Dec-Feb 2011             | 720                    | 581                                | 383                       | 363                 | 20         | 337                   | 5.3                   | 64.9                    | 61.4                      |

Relationship between columns: A=C+F; C=D+E; G=E/C, H=economically active of working age/total population of working age, I=in employment of working age/total population of working age, \* **A and B are underlying population estimates and are therefore not seasonally adjusted.** Please see note on revisions policy in Section 9.

Working age rates based on 16-64 population for both males and females - see Section 9 for details.

Figures may not sum due to rounding.

## Labour Market Structure – Sample of data available on website

Table 3

| Table Name | Description   | File Size |
|------------|---|-----------|
| 2.1a       | <u>Labour Market Structure - Seasonally Adjusted</u>            | 22KB      |
| 2.1b       | <u>Labour Market Structure</u>                                  | 20KB      |
| 2.2        | <u>Economic Activity by Age</u>                                 | 19KB      |
| 2.3        | <u>Economic Activity Rates by Age</u>                           | 19KB      |
| 2.4a       | <u>Economically Inactive Who Want Work</u>                      | 20KB      |
| 2.4b       | <u>Economically Inactive Who Do Not Want Work</u>               | 18KB      |
| 2.5        | <u>Economic Inactivity by Age</u>                               | 18KB      |
| 2.6        | <u>Employment by Category</u>                                   | 18KB      |
| 2.7        | <u>Actual Weekly Hours of Work</u>                              | 17KB      |
| 2.8        | <u>Employment by Age</u>  | 18KB      |
| 2.9        | <u>Unemployment by Age</u>                                      | 17KB      |
| 2.10       | <u>Unemployment by Duration</u>                                 | 18KB      |
| 2.11       | <u>International Comparisons of Employment and Unemployment</u> | 23KB      |
| 2.12       | <u>Comparisons of Working Age Rates</u>                         |           |
|            | <u>Notes and Definitions</u>                                    | 16KB      |

## Other Labour Force Survey Publications available on website

Table 4

| Publication title   | File Size |
|---|-----------|
| LFS Labour Market Statistics (December 2010 - February 2011)  | 98 KB     |
| LFS Reweighted Back Series 2006-2009 (please enable macros)   | 898 KB    |
| LFS Quarterly Supplement – October - December 2010  | 341 KB    |
| Women in Northern Ireland – September 2010  | 200 KB    |
| Labour Force Survey (LFS) Local Area Database 2009  | 659KB     |
| *** All data below this does not yet incorporate the latest Mid-Year Population revisions. A programme of work to update these bulletins using the latest population estimates is currently underway. *** | **        |
| LFS Reweighted Back Series 1992-2006 (please enable macros)   | 638 KB    |
| LFS Historical Supplement 2008  | 418 KB    |
| LFS Historical Data 1995-2008 (please enable macros)  | 312 KB    |
| LFS Historical Data 1984-1991   | 76 KB     |
| LFS Archive data  | **        |

# Claimant Count

# 3

## Unadjusted Claimant Count

The claimant count in NI at March 2011 was 59,961 (6.8% of the workforce), a decrease of 0.8% (486) over the previous month. There was an increase of 5.8% (3,303) over the year and the rate increased by 0.4 percentage points. Five years ago the total was 28,649 (3.3%). (The seasonally adjusted claimant count increased by 100 from last month's revised total.)

## Youth Claimants

18,438 under 25's (30.7% of all claimants) were claiming benefits in March 2011, a decrease of 1.1% (214 claimants) over the month and an increase of 3.1% (555) over the year. Youth claimants represent 2.1% of the workforce.

## Long-term Claimants

At March 2011, 14,677 (24.5% of all claimants) were claiming benefit for a year or more, a decrease of 1.0% (149 claimants) over the month and an increase of 19.9% (2,434) over the year. Long-term claimants represent 1.7% of the workforce.

## Flows out from Job Seekers Allowance

The success rate of job seekers leaving the count to obtain employment in February 2011 decreased by 3.7 percentage points since the same time last year. Of the 7,653 flows from the count in February 2011, 2,692 (35.2%) found employment compared to 2,699 (38.9%) of the 6,943 claimants who left the count in February 2010. This compares to 38.9% three months ago and 37.3% five years ago.

In the period from February 2010 to February 2011 the highest proportion (40.0%) of persons leaving JSA to find employment was in October 2010, while in July 2010 the proportion finding employment was at its lowest (29.4%). The highest proportion (18.2%) of persons leaving JSA to enter education or training occurred in September 2010. Those who left JSA to claim other benefits varied between 3.2% and 5.0% in the period. Those who left JSA because they failed to sign peaked at 34.9% in March and April 2010.

## Flows in to Job Seekers Allowance

Of the 6,943 claimants who left the count in February 2010, 33.3% returned to the count within 3 months, 10.3% returned after 3-6 months and a further 10.7% returned after 6-12 months giving a total of 54.3% of those who left the count in February 2010 returned to claiming JSA within one year. This was higher than the 50.9% of leavers in February 2009 (1 year previously) and higher than 48.3% of leavers in February 2005 (5 years previously) returning within one year.

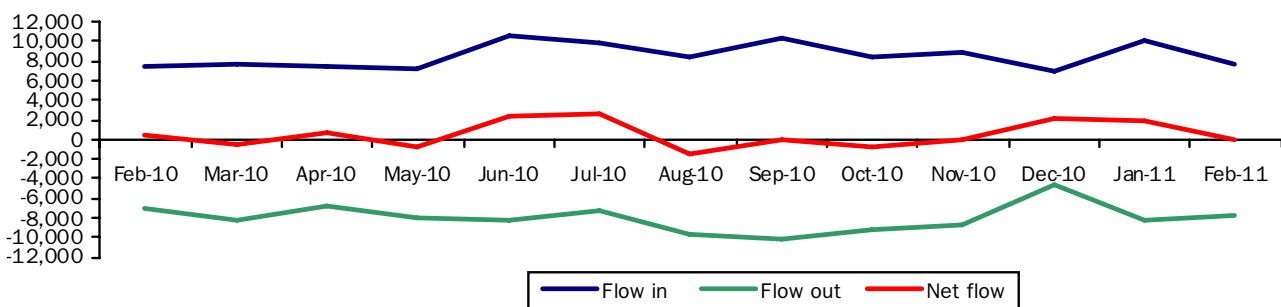
## Net Flow

There was a net flow of persons out from Job Seekers for 7 months and a net flow onto Job Seekers for 6 months between February 2010 and February 2011. Net flows off Jobseekers peaked in August 2010 with a net off-flow of 1,373 persons, while net flows onto Jobseekers peaked in July 2010 with a net on-flow of 2,569.

Further information on flows data is available in section 9.

## Flows in and out from JSA

Figure 9



**Claimant Count by District Council Area – March 2011**

**Number, Rate and % change over month and year (including jobs density indicator at 2009\*)**

**Table 5**

| District        | Number of Claimants |               |               | % Of Working Age |            |            | Change over month |             | Change over Year |            | Jobs Density |
|-----------------|---------------------|---------------|---------------|------------------|------------|------------|-------------------|-------------|------------------|------------|--------------|
|                 | Males               | Females       | All           | Males            | Females    | All        | Number            | %           | Number           | %          | Indicator*   |
| Antrim          | 957                 | 360           | 1,317         | 5.5              | 2.1        | 3.8        | 12                | 0.9         | -36              | -2.7       | 0.89         |
| Ards            | 1,485               | 518           | 2,003         | 6.0              | 2.0        | 4.0        | 8                 | 0.4         | 234              | 13.2       | 0.41         |
| Armagh          | 1,415               | 527           | 1,942         | 7.6              | 2.9        | 5.2        | 7                 | 0.4         | 219              | 12.7       | 0.66         |
| Ballymena       | 1,170               | 448           | 1,618         | 5.9              | 2.2        | 4.1        | 57                | 3.7         | 104              | 6.9        | 0.89         |
| Ballymoney      | 780                 | 253           | 1,033         | 7.9              | 2.6        | 5.3        | -11               | -1.1        | 71               | 7.4        | 0.46         |
| Banbridge       | 897                 | 285           | 1,182         | 5.7              | 1.9        | 3.8        | 8                 | 0.7         | 123              | 11.6       | 0.46         |
| Belfast         | 9,214               | 3,081         | 12,295        | 10.8             | 3.4        | 7.0        | -35               | -0.3        | 981              | 8.7        | 1.29         |
| Carrickfergus   | 760                 | 334           | 1,094         | 5.9              | 2.5        | 4.2        | -5                | -0.5        | -11              | -1.0       | 0.38         |
| Castlereagh     | 978                 | 374           | 1,352         | 4.7              | 1.7        | 3.2        | -21               | -1.5        | 90               | 7.1        | 0.73         |
| Coleraine       | 1,318               | 495           | 1,813         | 7.5              | 2.7        | 5.1        | -55               | -2.9        | -37              | -2.0       | 0.71         |
| Cookstown       | 725                 | 326           | 1,051         | 6.1              | 2.8        | 4.5        | -28               | -2.6        | -89              | -7.8       | 0.62         |
| Craigavon       | 2,247               | 814           | 3,061         | 7.5              | 2.7        | 5.1        | -52               | -1.7        | 186              | 6.5        | 0.72         |
| Derry           | 3,952               | 1,542         | 5,494         | 11.2             | 4.2        | 7.7        | -8                | -0.1        | 437              | 8.6        | 0.69         |
| Down            | 1,706               | 523           | 2,229         | 7.4              | 2.4        | 4.9        | -40               | -1.8        | 86               | 4.0        | 0.51         |
| Dungannon       | 1,278               | 537           | 1,815         | 6.7              | 3.0        | 4.9        | -11               | -0.6        | 99               | 5.8        | 0.69         |
| Fermanagh       | 1,418               | 498           | 1,916         | 6.9              | 2.5        | 4.8        | -14               | -0.7        | 173              | 9.9        | 0.68         |
| Larne           | 616                 | 221           | 837           | 6.1              | 2.2        | 4.1        | -37               | -4.2        | -59              | -6.6       | 0.51         |
| Limavady        | 1,164               | 392           | 1,556         | 10.3             | 3.6        | 7.0        | 0                 | 0.0         | 33               | 2.2        | 0.45         |
| Lisburn         | 2,278               | 909           | 3,187         | 6.2              | 2.4        | 4.3        | -39               | -1.2        | 169              | 5.6        | 0.64         |
| Magherafelt     | 814                 | 308           | 1,122         | 5.5              | 2.2        | 3.9        | -10               | -0.9        | -40              | -3.4       | 0.60         |
| Moyle           | 477                 | 182           | 659           | 8.8              | 3.4        | 6.2        | -27               | -3.9        | -14              | -2.1       | 0.44         |
| Newry & Mourne  | 2,995               | 949           | 3,944         | 9.5              | 3.0        | 6.2        | -45               | -1.1        | 306              | 8.4        | 0.62         |
| Newtownabbey    | 1,567               | 599           | 2,166         | 6.0              | 2.2        | 4.1        | -19               | -0.9        | 42               | 2.0        | 0.65         |
| North Down      | 1,279               | 535           | 1,814         | 5.1              | 2.1        | 3.6        | -14               | -0.8        | 78               | 4.5        | 0.52         |
| Omagh           | 1,198               | 455           | 1,653         | 7.0              | 2.7        | 4.9        | -68               | -4.0        | 65               | 4.1        | 0.67         |
| Strabane        | 1,308               | 500           | 1,808         | 10.2             | 4.0        | 7.1        | -39               | -2.1        | 93               | 5.4        | 0.48         |
|                 |                     |               |               |                  |            |            |                   |             |                  |            |              |
| <b>NI TOTAL</b> | <b>43,996</b>       | <b>15,965</b> | <b>59,961</b> | <b>7.7</b>       | <b>2.8</b> | <b>5.2</b> | <b>-486</b>       | <b>-0.8</b> | <b>3,303</b>     | <b>5.8</b> | <b>0.73</b>  |

\* Data relates to 2009. Jobs Density = total number of jobs in an area divided by the resident population of working age in the area

## Claimant spells ended by destination

Figure 10



## Occupation Data

At March 2011, 31.3% (18,600) of all claimants defined their usual (or previous) occupation as an Elementary Occupation. Elementary Occupations includes elementary agricultural, construction, process plant, goods storage, administrative, personal services, cleaning, security and sales occupations. A further 17.3% (10,270) gave their usual occupation as working in the Skilled Trades. These two groups account for approximately one half of all claimants in March 2011. The smallest occupation group, with 2.0% (1,190) of all claimants, was Managers and Senior Officials.

Overall the NI claimant count (computerised claims only) decreased by 0.7% over the month to March 2011. Five of the nine occupational groups showed a decrease in levels with the largest decrease occurring in Skilled Trade Occupations, which decreased by 330 (3.1%), Professional Occupations which decreased by 85 (5.7%) and Associate Professional and Technical Occupations which also decreased by 85 (3.3%). The groups showing the largest increase in levels were Sales and Customer Service Occupations which increased by 105 (1.2%).

## Claimant Count (unadjusted) by Usual Occupation – March 2011 (Computerised claims only)

Table 6

| Occupational Groups<br>(Usual Occupation)        | March 2011          |                | Change over month   |             |
|--|---------------------|----------------|---------------------|-------------|
|  | Number of Claimants | % of Claimants | Number of claimants | % change    |
| Managers and Senior Officials                    | 1,190               | 2.0            | 0                   | 0.0         |
| Professional Occupations                         | 1,405               | 2.4            | -85                 | -5.7        |
| Associate Professional and Technical Occupations | 2,515               | 4.2            | -85                 | -3.3        |
| Administrative and Secretarial Occupations       | 4,855               | 8.2            | 25                  | 0.5         |
| Skilled Trade Occupations                        | 10,270              | 17.3           | -330                | -3.1        |
| Personal Service Occupations                     | 3,390               | 5.7            | 50                  | 1.5         |
| Sales and Customer Service Occupations           | 8,850               | 14.9           | 105                 | 1.2         |
| Process, Plant and Machine Operatives            | 8,390               | 14.1           | -80                 | -0.9        |
| Elementary Occupations                           | 18,600              | 31.3           | -30                 | -0.2        |
| Not Known  | 55                  | 0.1            | -15                 | -21.4       |
| <b>NI Total</b>                                  | <b>59,515</b>       | <b>100.0</b>   | <b>-445</b>         | <b>-0.7</b> |

**Claimant Count -Sample of data available on website:  
Table 7**

| <b>Table Name</b> | <b>Description</b>  | <b>File Size</b> |
|-------------------|---|------------------|
| Table 3.1         | <u>Seasonally Adjusted Claimant Count</u>                         | 17.5KB           |
| Table 3.2         | <u>Total Claimant Count</u>                                       | 16.0KB           |
| Table 3.3         | <u>Claimant Count Trends – Seasonally Adjusted Claimant Count</u> | 18.0KB           |
| Table 3.4         | <u>Claimant Count Trends – Total Claimant Count</u>               | 17.0KB           |
| Table 3.5         | <u>Claimant Count Trends – Long-Term Claimant Count</u>           | 16.0KB           |
| Table 3.6         | <u>Claimant Count Trends- Youth Claimant Count</u>                | 14.5KB           |
| Table 3.7         | <u>Claimant Count by Travel-to-Work-Area</u>                      | 19.5KB           |
| Table 3.8         | <u>Claimant Count by District Council Area</u>                    | 21.0KB           |
| Table 3.9         | <u>Claimant Count by Parliamentary Constituency Area</u>          | 20.0KB           |
| Table 3.10        | <u>Claimant Count by NUTSiii Area</u>                             | 18.5KB           |
| Table 3.11        | <u>Claimant Count by Usual Occupation</u>                         | 17.0KB           |
| Table 3.12        | <u>Outflows by Destination (including percentage recycled)</u>    | 21.5KB           |
| Table 3.13        | <u>Total Annual Outflows by Destination</u>                       | 20.0KB           |
| Table 3.14        | <u>Recycling of Claimants by District Council Area</u>            | 19.0KB           |
| Table 3.15        | <u>Claimant Count by Ward</u>                                     | 81.0KB           |

# Redundancies

## 4

There were 1,937 confirmed redundancies over the year to 31<sup>st</sup> March 2011, a decrease of 47% compared to the same period in the previous year (3,686). Of these, 228 confirmed redundancies took place during the calendar month of March 2011 and 97 in the previous month of February 2011. This compares to 249 in March 2010 (one year ago).

Table 8 shows the distribution of these confirmed redundancies by District Council area.

The largest number of redundancies occurred in Belfast (643), Castlereagh (244) and Derry (160) District Council areas.

### Confirmed redundancies by District Council in year to 31 March 2011

Table 8

| District Council Area | Total |
|-----------------------|-------|
| Antrim                | 52    |
| Ards                  | 36    |
| Armagh                | 2     |
| Ballymena             | 41    |
| Ballymoney            | 43    |
| Banbridge             | 8     |
| Belfast               | 643   |
| Carrickfergus         | 36    |
| Castlereagh           | 244   |
| Coleraine             | 68    |
| Cookstown             | 33    |
| Craigavon             | 74    |
| Derry                 | 160   |
| Down                  | 0     |
| Dungannon             | 11    |
| Fermanagh             | 17    |
| Larne                 | 36    |
| Limavady              | 0     |
| Lisburn               | 87    |
| Magherafelt           | 58    |
| Moyle                 | 0     |
| Newry & Mourne        | 76    |
| Newtownabbey          | 66    |
| North Down            | 95    |
| Omagh                 | 0     |
| Strabane              | 51    |
| N. Ireland            | 1,937 |

Of these 1,937 confirmed redundancies, 568 or 29% were in the Manufacturing sector, with 174 redundancies (9% of all redundancies) occurring in the Manufacture of fabricated metal products, except machinery and equipment. A further 296 redundancies (15% of all redundancies) occurred in the Construction sector.

Altogether there are 1,163 outstanding redundancies that have been notified to the Department, but have yet to take place. This compares with 1,431 this time one year ago - a decrease of 19%.

### Redundancies – Sample of Data Available on Website

Table 9

| Regional Redundancy data                                     | File size |
|--|-----------|
| <a href="#">District Council (Jan 2000 - date)</a>           | 33.0KB    |
| <a href="#">Parliamentary Constituency (Jan 2000 - date)</a> | 29.0KB    |
| <a href="#">Travel-to-Work Area (Jan 2000 - date)</a>        | 29.0KB    |

| Industrial Sector  | File size |
|--|-----------|
| <a href="#">Standard Industrial Classification (Jan 2000 - date)</a> | 70.0KB    |

### Redundancy Legal Requirements

Under the Employment Rights (Northern Ireland) Order 1996 (Amended 8 October 2006) employers are only legally required to notify the Department of impending redundancies of 20 or more employees. Employers who propose less than 20 redundancies are not included in the statistics.

# Quarterly Employment Survey

## 5

### Seasonally Adjusted

The December 2010 seasonally adjusted employee jobs figure stands at 692,910.

This represents a seasonally adjusted decrease of 0.3% (or 1,880 jobs) from the revised September 2010 estimate of 694,790.

Over the quarter seasonally adjusted employee jobs decreased in the Service Sector by 0.2% (1,270 jobs), and also in the Construction Sector by 4.5% (1,480 jobs). Other Industries also decreased over the quarter by 0.4% (70 jobs). Seasonally adjusted employee jobs increased in the Manufacturing sector by 1.3% (950 jobs).

### Unadjusted

The December 2010 seasonally unadjusted figure stands at 697,520.

This represents an increase of 0.8% (5,490 jobs) since September 2010 and a decrease of 1.2% (8,350 jobs) in the past year.

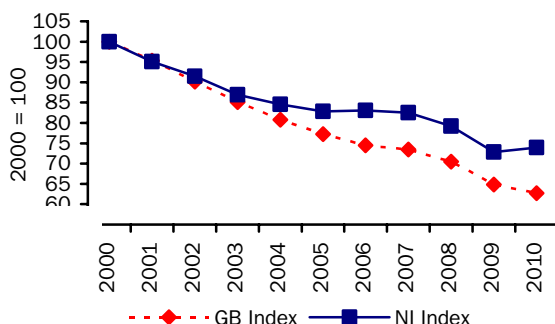
Over the year, December 2009 to December 2010, the unadjusted employee jobs figure for Construction decreased by 10.1% (3,540 jobs), while employee jobs in the Service Sector decreased by 0.9% (5,440 jobs). Manufacturing employee jobs increased by 1.5% (1,100 jobs) over the year.

### Manufacturing Employee Jobs

The level of jobs in the Manufacturing sector in both NI and GB has declined significantly over the past 10 years.

### Manufacturing jobs for NI & GB indexed (December of each year\*)

Figure 11



\*GB figures for 2010 refer to September 2010

NI manufacturing jobs recorded a marked decline between 2000 and 2005, with the figure for 2005 falling to 83% of the 2000 figure. Manufacturing employee jobs in NI were fairly stable between 2005 and 2007, with the 2007 figure remaining at 83% of the 2000 level. However, manufacturing jobs continued their decline between 2007 and 2009, falling to 73% of the 2000 level. There has been a turnaround in the manufacturing employee jobs in 2010 with the figure rising to 74% of the 2000 level.

Manufacturing jobs in GB have been in sharp decline from 2000 and the 2010 estimate stands at only 63% of the 2000 level.

### Changes in the Structure of Manufacturing Jobs (NI)

Over the period 2000-2010, Manufacturing jobs in NI decreased by 26,390, with 18 of the 23 manufacturing divisions recording a decrease. The largest decrease occurred in the Manufacture of wearing apparel, which recorded 7,160 fewer jobs. There were 6,200 fewer jobs in the Manufacture of computer, electronic and optical products, 5,320 fewer in the Manufacture of textiles, 1,760 fewer in the Manufacture of motor vehicles, trailers and semi-trailers and 1,550 fewer in the Manufacture of other transport equipment.

However, these decreases were partially offset by increases in the Manufacture of basic pharmaceutical products and pharmaceutical preparations (630), in the Manufacture of food products (400) and in the Manufacture of fabricated metal products, except machinery and equipment (360).

The large decline in the Manufacture of Textiles and Wearing Apparel sectors has impacted on the structure of Northern Ireland Manufacturing jobs. In 2000 15.0% of Manufacturing jobs were located in the Textiles, Wearing Apparel and Leather Related Products sectors; by 2010 this had fallen to 3.2%.

**Quarterly Employment Survey**  
**Northern Ireland Seasonally Adjusted Employee Jobs\* December 2010**  
**Table 10**

|                           |                |                |                | % change in total  |                 |
|---------------------------|----------------|----------------|----------------|--------------------|-----------------|
|                           | Males          | Females        | All persons    | since last quarter | since last year |
| Manufacturing             | 58,390         | 16,310         | 74,700         | 1.3                | 1.4             |
| Construction <sup>1</sup> | 27,840         | 3,820          | 31,660         | -4.5               | -10.0           |
| Services                  | 227,390        | 340,100        | 567,490        | -0.2               | -0.9            |
| Other <sup>2</sup>        | 16,400         | 2,660          | 19,060         | -0.4               | -2.4            |
| <b>Total</b>              | <b>330,020</b> | <b>362,890</b> | <b>692,910</b> | <b>-0.3</b>        | <b>-1.2</b>     |

<sup>1</sup> Figures for females in the construction industry are not seasonally adjusted

<sup>2</sup> Covers Industry Sections A, B, D and E which have not been seasonally adjusted

\* Figures are rounded to the nearest 10 and may not sum due to rounding

**Northern Ireland Employee Jobs\* - Seasonally Adjusted Series**  
**Table 11**

|      |           | Manufacturing | Construction <sup>1</sup> | Services | Other Industries <sup>2</sup> | All Industries | Public <sup>3</sup> | Private <sup>3</sup> |
|------|-----------|---------------|---------------------------|----------|-------------------------------|----------------|---------------------|----------------------|
| 2004 | March     | 87,330        | 37,210                    | 534,220  | 22,610                        | 681,370        | 215,523             | 465,850              |
|      | June      | 86,310        | 37,220                    | 535,600  | 22,290                        | 681,430        | 213,826             | 467,530              |
|      | September | 85,890        | 37,250                    | 541,280  | 22,480                        | 686,900        | 217,510             | 469,540              |
|      | December  | 85,510        | 37,420                    | 544,690  | 22,770                        | 690,390        | 217,997             | 472,300              |
| 2005 | March     | 85,150        | 37,880                    | 551,310  | 22,430                        | 696,760        | 218,722             | 478,150              |
|      | June      | 84,300        | 38,770                    | 551,730  | 21,130                        | 695,930        | 219,797             | 476,010              |
|      | September | 84,160        | 39,310                    | 553,660  | 21,310                        | 698,430        | 220,775             | 477,650              |
|      | December  | 83,800        | 41,010                    | 557,490  | 21,390                        | 703,690        | 221,032             | 482,650              |
| 2006 | March     | 83,910        | 41,920                    | 559,370  | 21,390                        | 706,590        | 220,694             | 486,120              |
|      | June      | 83,750        | 42,310                    | 560,090  | 20,830                        | 706,970        | 220,698             | 486,130              |
|      | September | 83,860        | 42,690                    | 562,380  | 20,910                        | 709,840        | 220,985             | 488,660              |
|      | December  | 84,030        | 43,010                    | 564,860  | 20,990                        | 712,890        | 220,390             | 492,560              |
| 2007 | March     | 83,670        | 43,590                    | 567,060  | 21,050                        | 715,380        | 220,314             | 495,450              |
|      | June      | 84,220        | 44,710                    | 571,260  | 20,890                        | 721,080        | 220,736             | 500,190              |
|      | September | 83,970        | 45,320                    | 574,700  | 21,070                        | 725,060        | 219,433             | 505,190              |
|      | December  | 83,490        | 46,690                    | 579,240  | 20,170                        | 729,600        | 219,640             | 510,090              |
| 2008 | March     | 83,520        | 46,000                    | 582,710  | 20,150                        | 732,370        | 219,915             | 513,020              |
|      | June      | 83,500        | 44,850                    | 584,800  | 20,370                        | 733,520        | 218,447             | 514,910              |
|      | September | 82,300        | 43,480                    | 580,800  | 20,440                        | 727,030        | 216,254             | 510,100              |
|      | December  | 80,140        | 41,570                    | 579,910  | 20,040                        | 721,650        | 223,876             | 498,120              |
| 2009 | March     | 77,970        | 39,540                    | 577,410  | 19,960                        | 714,880        | 224,481             | 490,910              |
|      | June      | 75,450        | 38,210                    | 577,460  | 19,910                        | 711,020        | 225,068             | 485,700              |
|      | September | 74,110        | 36,750                    | 577,070  | 19,800                        | 707,730        | 225,606             | 481,440              |
|      | December  | 73,640        | 35,190                    | 572,760  | 19,520                        | 701,110        | 226,439             | 475,190              |
| 2010 | March     | 73,360        | 34,770                    | 572,440  | 19,530                        | 700,090        | 225,512             | 475,000              |
|      | June      | 73,640        | 34,020                    | 569,720  | 19,200                        | 696,580        | 224,826             | 471,480              |
|      | September | 73,750        | 33,140                    | 568,760  | 19,130                        | 694,790        | 223,662             | 470,520              |
|      | December  | 74,700        | 31,660                    | 567,490  | 19,060                        | 692,910        | 222,897             | 470,480              |

<sup>1</sup> Figures for females in the construction industry are not seasonally adjusted

<sup>2</sup> Covers Industry Sections A, B, D and E which have not been seasonally adjusted

<sup>3</sup> Estimates of Public and Private sector jobs may not sum to the total Jobs, as each series is seasonally adjusted separately.

\* Figures are rounded to the nearest 10 and may not sum due to rounding

## Quarterly Employment Survey (QES) – Sample of data available on website

### The Northern Ireland Quarterly Employment Survey Table 12

| Table Name | Description   | File Size |
|------------|---|-----------|
| 5.1        | <a href="#">NI Employee Jobs - Seasonally Adjusted December 2010</a>  | 15.5 KB   |
| 5.2        | <a href="#">NI Employee Jobs - Seasonally Adjusted 1998 – 2010</a>  | 15.5 KB   |
| 5.3        | <a href="#">NI Employee Jobs - Unadjusted 1998 – 2010</a>   | 15.5 KB   |
| 5.4        | <a href="#">NI Employee Jobs (Unadjusted) by Industry Section – December 2010</a>                                 | 15.5 KB   |
| 5.5        | <a href="#">NI Public Sector Jobs (Unadjusted) – December 2010</a>  | 13.5 KB   |
| 5.6        | <a href="#">NI Employee Jobs by Industry Section (Unadjusted) December 2009, September 2010 and December 2010</a> | 15.5 KB   |
| 5.7        | <a href="#">Self Employment Jobs in NI by Broad Industry Group (June of Each Year)</a>                            | 15.0 KB   |
| 5.8        | <a href="#">Workforce in Employment 1983 – 2010</a>   | 15.0 KB   |
| 5.9        | <a href="#">NI Employee Jobs by 2-digit SIC07 Class – December 2010</a>   | 31.5 KB   |

### Other Quarterly Employment Survey Publications available on website Table 13

| Publication title  | File Size |
|--|-----------|
| <a href="#">Quarterly Employment Survey (QES) Supplement - December 2010</a> | 493 KB    |

# Annual Survey of Hours and Earnings

## 6

The Annual Survey of Hours and Earnings (ASHE) provides information on employees' hourly, weekly and annual earnings by gender and working pattern. It has been designed by the Office for National Statistics and is carried out in Northern Ireland by NISRA statisticians. Both median and mean results are reported by ASHE, where the mean is the arithmetic average while the median is the value below which 50 per cent of employees fall. The median is often preferred for earnings data as it is influenced less by extreme values and because of the skewed distribution of earnings data.

The median gross weekly earnings for all (i.e. both full- and part-time) employees in NI in 2010 was £356.6, some 12% lower than the UK (£404.3). This represented a growth in NI median earnings for all employees of 0.6% over the year to April 2010, compared to growth in the UK of 1.8%.

NI full-time employees' median gross weekly earnings at April 2010 were £440.8, which was approximately 88% of the figure in the UK (£498.8). NI full-time earnings increased by 0.8% over the period, compared to an increase of 2.1% in the UK. The median gross weekly part-time earnings in NI at April 2010 was £149.5, down 6.0% over the year compared with an increase of 0.7% in the UK (to £153.7).

Median gross weekly earnings for full-time employees in the NI private sector increased at a slower rate (0.6% to £383.4) than in the UK, where growth was 2.0% over the year (to £473.1). This represented a widening of the NI/UK private sector pay gap, from 82.1% of the UK figure at April 2009 to 81.0% at April 2010.

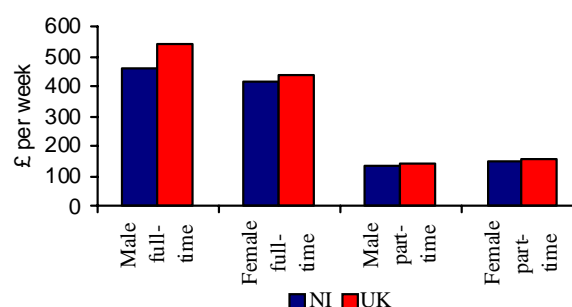
There has been a narrowing of the gender pay gap for all employees in NI over the period 2009-2010. Female median hourly earnings excluding overtime were 89.9% of male earnings at April 2010, compared to 87.6% a year earlier. The NI gender pay gap remains less marked than in the UK, where the equivalent female to male earnings ratio was 80.2% at April 2010. It should also be noted that gender pay differences continue to exist for various occupational and industry groupings in NI, as evidenced by weekly and annual earnings trends.

Please note, changes in NI earnings over the year and relative to the UK can be influenced by a range of factors including the timing of pay settlements,

the extent of overtime, and differences in the composition of the workforce. As ASHE is a sample survey, results are also subject to an associated level of sampling variability. Further information is available in section 12 of the ASHE publication: [Background notes for ASHE](#)

### Median gross weekly earnings by full-/part-time and gender, April 2010

Figure 12



### Median and mean gross weekly earnings 2006-10

Table 14

| £ per week       | Median    |           |       | Mean      |           |       |
|------------------|-----------|-----------|-------|-----------|-----------|-------|
|                  | Full-time | Part-time | All   | Full-time | Part-time | All   |
| April 2010       |           |           |       |           |           |       |
| Men              | 460.0     | 132.1     | 414.2 | 539.3     | 191.2     | 489.3 |
| Women            | 412.2     | 152.6     | 298.0 | 471.8     | 180.3     | 348.6 |
| All              | 440.8     | 149.5     | 356.6 | 511.6     | 183.0     | 417.9 |
| April 2009       |           |           |       |           |           |       |
| Men              | 460.0     | 150.0     | 416.6 | 543.6     | 190.1     | 498.5 |
| Women            | 402.6     | 161.4     | 297.2 | 460.6     | 187.7     | 350.4 |
| All              | 437.1     | 159.1     | 354.6 | 509.1     | 188.3     | 422.9 |
| % Change 09 - 10 |           |           |       |           |           |       |
| Men              | 0.0       | -11.9     | -0.6  | -0.8      | 0.6       | -1.8  |
| Women            | 2.4       | -5.5      | 0.3   | 2.4       | -3.9      | -0.5  |
| All              | 0.8       | -6.0      | 0.6   | 0.5       | -2.8      | -1.2  |
| April 2008       |           |           |       |           |           |       |
| Men              | 439.8     | 139.9     | 404.3 | 520.7     | 214.3     | 479.2 |
| Women            | 385.2     | 152.6     | 287.0 | 438.4     | 188.8     | 335.0 |
| All              | 417.7     | 150.0     | 345.0 | 487.0     | 195.0     | 406.4 |
| April 2007       |           |           |       |           |           |       |
| Men              | 421.7     | 126.9     | 394.2 | 501.4     | 178.6     | 463.7 |
| Women            | 367.7     | 145.3     | 272.6 | 427.9     | 173.8     | 321.1 |
| All              | 400.3     | 140.8     | 329.9 | 471.7     | 174.8     | 391.3 |
| April 2006       |           |           |       |           |           |       |
| Men              | 421.6     | 122.3     | 390.7 | 500.9     | 169.7     | 456.9 |
| Women            | 374.2     | 132.5     | 260.2 | 423.3     | 162.7     | 307.5 |
| All              | 402.5     | 130.8     | 322.7 | 469.4     | 164.2     | 379.9 |

## Average full-time earnings by occupation, April 2010

**Table 15**

|  | Count<br>(thousands) | Median<br>gross<br>weekly<br>pay (£) | Mean<br>gross<br>weekly<br>pay (£) | Median<br>total<br>weekly<br>hours | Mean<br>total<br>weekly<br>hours |
|--|----------------------|--------------------------------------|------------------------------------|------------------------------------|----------------------------------|
| Managers and Senior Officials                    | 72                   | 598.7                                | 674.5                              | 38.0                               | 38.8                             |
| Professional Occupations                         | 86                   | 686.6                                | 735.1                              | 37.0                               | 36.7                             |
| Associate Professional and Technical Occupations | 82                   | 564.6                                | 584.7                              | 37.6                               | 39.7                             |
| Administrative and Secretarial Occupations       | 65                   | 348.5                                | 373.8                              | 37.5                               | 38.4                             |
| Skilled Trades Occupations                       | 58                   | 409.3                                | 434.3                              | 40.0                               | 41.5                             |
| Personal Service Occupations                     | 30                   | 316.0                                | 331.2                              | 37.5                               | 39.2                             |
| Sales and Customer Service Occupations           | 19                   | 260.9                                | 288.5                              | 38.3                               | 39.2                             |
| Process, Plant and Machine Operatives            | 54                   | 370.0                                | 396.3                              | 40.2                               | 43.5                             |
| Elementary Occupations                           | 41                   | 299.9                                | 325.6                              | 40.0                               | 41.0                             |

## Average full-time earnings by industry, April 2010 (based on the 2007 UK Standard Industrial Classification)

**Table 16**

|   | Count<br>(thousands) | Median<br>gross<br>weekly<br>pay (£) | Mean<br>gross<br>weekly<br>pay (£) | Median<br>total<br>weekly<br>hours | Mean<br>total<br>weekly<br>hours |
|---|----------------------|--------------------------------------|------------------------------------|------------------------------------|----------------------------------|
| Agriculture, forestry and fishing   | x                    | 307.0                                | 350.5                              | 41.6                               | 43.7                             |
| Mining and quarrying  | x                    | x                                    | 508.5                              | 39.6                               | 43.6                             |
| Manufacturing   | 77                   | 409.8                                | 466.5                              | 40.0                               | 41.6                             |
| Electricity, gas, steam, and air conditioning supply  | 5                    | 571.8                                | 683.6                              | 37.0                               | 37.4                             |
| Water supply; sewerage, waste management and remediation activities   | 5                    | 512.1                                | 520.4                              | 41.9                               | 44.5                             |
| Construction  | 30                   | 436.4                                | 513.8                              | 40.0                               | 42.1                             |
| Wholesale and retail trade; repair of motor vehicles and motorcycles  | 67                   | 350.6                                | 421.7                              | 39.2                               | 39.8                             |
| Transportation and storage  | 18                   | 409.8                                | 474.8                              | 40.0                               | 43.4                             |
| Accommodation and food services activities  | 16                   | 260.0                                | 310.9                              | 38.2                               | 39.9                             |
| Information and communication   | 15                   | 502.1                                | 549.9                              | 37.6                               | 38.2                             |
| Financial and insurance activities  | 11                   | 537.2                                | 612.7                              | 35.0                               | 35.8                             |
| Real estate activities  | 6                    | 434.3                                | 469.5                              | 37.1                               | 38.1                             |
| Professional, scientific and technical activities   | 17                   | 449.4                                | 523.9                              | 37.5                               | 37.9                             |
| Administrative and support service activities   | 16                   | 321.5                                | 380.5                              | 40.0                               | 41.2                             |
| Public administration and defence; compulsory social security   | 63                   | 536.8                                | 585.8                              | 42.0                               | 42.0                             |
| Education   | 60                   | 674.1                                | 637.3                              | 33.5                               | 34.6                             |
| Human health and social work activities   | 80                   | 475.6                                | 539.2                              | 37.5                               | 38.1                             |
| Arts, entertainment and recreation  | 9                    | 365.6                                | 417.1                              | 37.5                               | 38.7                             |
| Other service activities  | 6                    | x                                    | 484.6                              | 37.6                               | 38.9                             |
| Activities of households as employers; undifferentiated goods and services-producing activities of households for own use | x                    | 339.9                                | 359.8                              | 37.4                               | 42.0                             |

x Coefficient of Variation too large to provide a reliable estimate

Please note that the figures in the above two tables relating to numbers employed relate to PAYE employees as defined by ASHE and should not be considered an accurate estimate of employee job counts.

## Sample of ASHE data available on website

**Table 17**

| Table name | Description   | File size |
|------------|---|-----------|
| 6.1        | <a href="#">ASHE 2002 Headline Data for Key Variables</a>                                     | 78 KB     |
| 6.2        | <a href="#">ASHE 2003 Headline Data for Key Variables</a>                                     | 163 KB    |
| 6.3        | <a href="#">ASHE 2004 Headline Data for Key Variables excluding supplementary information</a> | 51 KB     |
| 6.4        | <a href="#">ASHE 2004 Headline Data for Key Variables</a>                                     | 52 KB     |
| 6.5        | <a href="#">ASHE 2005 Headline Data for Key Variables</a>                                     | 52 KB     |
| 6.6        | <a href="#">ASHE 2006 Headline Data for Key Variables excluding methodological changes</a>    | 168 KB    |
| 6.7        | <a href="#">ASHE 2006 Headline Data for Key Variables</a>                                     | 176 KB    |
| 6.8        | <a href="#">ASHE 2007 Headline Data for Key Variables</a>                                     | 165 KB    |
| 6.9        | <a href="#">ASHE 2008 Headline Data for Key Variables</a>                                     | 165 KB    |
| 6.10       | <a href="#">ASHE 2009 Headline Data for Key Variables - revised</a>                           | 52 KB     |
| 6.11       | <a href="#">ASHE 2010 Headline Data for Key Variables</a>                                     | 52 KB     |

# Vacancy Statistics and Employment & Training

## 7

**Vacancy Statistics and Employment & Training Measures  
Participation in the Department for Employment and Learning Schemes to February 2011  
Table 18**

|             | Steps to Work<br>(2) | New Deal<br>(2, 3) | Future<br>Managers | Employment<br>Support | Training for<br>Success<br>(4, 5) | Jobskills<br>(4, 5) |
|-------------|----------------------|--------------------|--------------------|-----------------------|-----------------------------------|---------------------|
| <u>2009</u> |                      |                    |                    |                       |                                   |                     |
| February    | 4,900                | 1,250              | 150                | 750                   | 12,050                            | 3,500               |
| <u>2010</u> |                      |                    |                    |                       |                                   |                     |
| February    | 8,450                | 850                | 200                | 700                   | 15,900                            | 1,100               |
| March       | 8,700                | 900                | 250                | 700                   | 15,600                            | 1,050               |
| April       | 9,000                | 950                | 200                | 700                   | 15,550                            | 800                 |
| May         | 9,100                | 1,200              | 250                | 700                   | 15,400                            | 700                 |
| June        | 9,300                | 1,200              | 200                | 700                   | 15,250                            | 600                 |
| July        | 9,550                | 1,200              | 250                | 700                   | 15,200                            | 550                 |
| August      | 10,350               | 1,300              | 200                | 700                   | 14,350                            | 300                 |
| September   | 11,450               | 1,300              | 200                | 700                   | 17,800                            | 250                 |
| October     | 11,700               | 1,300              | 200                | 700                   | 18,200                            | 200                 |
| November    | 12,300               | 1,300              | 250                | 700                   | 18,400                            | 150                 |
| December    | 12,550               | 1,300              | 200                | 700                   | 18,400                            | 150                 |
| <u>2011</u> |                      |                    |                    |                       |                                   |                     |
| January     | 13,350               | 1,300              | 200                | 700                   | 18,100                            | 150                 |
| February    | -                    | 1,400              | 200                | 700                   | 17,950                            | 100                 |

**Figures in the above table are not National Statistics.**

(1) Figures are rounded to the nearest fifty.

(2) On 29th September 2008, Steps to Work was widely introduced in NI and subsumed the main New Deal programmes. However, New Deal continues to operate in the Foyle and Lisnagelvin office areas. Steps to Work figures relate to the last Friday of each month and are revised on a monthly basis. Steps to Work figures are only available until January 2011. Figures for February 2011 will be published in May 2011.

(3) Includes New Deal 18-24 and 25+. New Deal figures relate to the last Sunday of each month and are revised on a monthly basis.

(4) Training for Success (TfS), was introduced in September 2007, and will ultimately replace Jobskills. In September 2008, TfS was re-structured into two separate provisions, TfS and ApprenticeshipsNI. The reported TfS figures include both provisions. In response to the economic downturn an intervention measure, Programme-Led Apprenticeships, was introduced on 7<sup>th</sup> September 2009, and the figures for this programme are now included under the TfS heading.

(5) February 2011 Jobskills and TfS figures are as at the 13th February 2011.

## Vacancies data

Headline figures are presented for vacancies which have been notified to JobCentres / Jobs & Benefits offices (JBO) of the Department for Employment and Learning (DEL). The statistics do not represent the total unsatisfied demand for staff by employers within Northern Ireland, but are only those vacant positions notified by employers to DEL. Vacancy inflow and outflow figures are shown on a standardised basis, where values are converted to a standard 4 1/3 week period.

### Standardised Vacancies notified (Inflow)

There were 3,794 vacancies notified in the period ending 4<sup>th</sup> February 2011. This was 17% lower than the number of vacancies notified in February 2010 (4,547) and a decrease of 31% on the number of vacancies notified in February 2009 (5,469).

### Standardised Vacancies filled and cancelled (Outflows)

The number of placed and cancelled vacancies in the period ending 4<sup>th</sup> February 2011 was 2,713. This was a decrease of 11% from February 2010 (3,031) and a decrease of 35% from the same period two years previously (4,156).

### Unfilled Vacancies

A total of 4,289 vacancies remained unfilled on 4<sup>th</sup> February 2011, a decrease of 25% on the unfilled total in February 2010 (5,732) and a decrease of 34% on the amount unfilled in February 2009 (6,498). Of the 4,289 unfilled vacancies, 1,712 were available to jobseekers.

## Vacancies Notified, Outflow and Vacancies Unfilled: February 2009 to February 2011<sup>(1)</sup>

Table 19

| Report Period Ending |        | Vacancies notified (Inflows) (2) |                          |   | Vacancies Filled and Cancelled (Outflows) (3) |                          |   | Unfilled Vacancies (4) |                                       |               |
|----------------------|--------|----------------------------------|--------------------------|---|---|--------------------------|---|------------------------|---------------------------------------|---------------|
|                      |        | Level Unadjusted (5)             | Level (standardised) (6) | Change on same month in previous year (7) | Level unadjusted (5)                          | Level (standardised) (6) | Change on same month in previous year (7) | Level Unadjusted       | Change on same month in previous year | Of which Live |
| 2009                 | 06-Feb | 6,310                            | 5,469                    | -45%                                      | 4,795   | 4,156                    | -45%                                      | 6,498                  | -47%                                  | -             |
| 2010                 | 05-Feb | 4,197                            | 4,547                    | -17%                                      | 2,798   | 3,031                    | -27%                                      | 5,732                  | -12%                                  | -             |
|                      | 05-Mar | 4,523                            | 4,900                    | -12%                                      | 3,841   | 4,161                    | -20%                                      | 6,414                  | -6%                                   | -             |
|                      | 02-Apr | 4,222                            | 4,574                    | 6%  | 4,412   | 4,780                    | 2%  | 6,224                  | -4%                                   | -             |
|                      | 07-May | 5,278                            | 4,574                    | 8%  | 5,417   | 4,695                    | 4%  | 6,085                  | -2%                                   | 2,074         |
|                      | 04-Jun | 4,762                            | 5,159                    | 19%                                       | 4,420   | 4,788                    | 9%  | 6,427                  | 5%                                    | 2,386         |
|                      | 02-Jul | 3,607                            | 3,908                    | 1%  | 4,555   | 4,935                    | 11%                                       | 5,479                  | -3%                                   | 1,660         |
|                      | 06-Aug | 4,511                            | 3,910                    | -4%                                       | 4,840   | 4,195                    | 5%  | 5,150                  | -10%                                  | 1,925         |
|                      | 03-Sep | 4,764                            | 5,161                    | -3%                                       | 3,104   | 3,363                    | -15%                                      | 6,810                  | -3%                                   | 2,385         |
|                      | 08-Oct | 5,489                            | 4,757                    | -29%                                      | 5,519   | 4,783                    | -21%                                      | 6,780                  | -12%                                  | 2,079         |
|                      | 05-Nov | 4,221                            | 4,573                    | -11%                                      | 4,618   | 5,003                    | -13%                                      | 6,383                  | -9%                                   | 1,988         |
|                      | 03-Dec | 3,257                            | 3,528                    | -21%                                      | 4,557   | 4,937                    | -5%                                       | 5,083                  | -20%                                  | 1,506         |
| 2011                 | 07-Jan | 2,320                            | 2,011                    | -30%                                      | 4,112   | 3,564                    | -23%                                      | 3,291                  | -24%                                  | 1,190         |
|                      | 04-Feb | 3,502                            | 3,794                    | -17%                                      | 2,504   | 2,713                    | -11%                                      | 4,289                  | -25%                                  | 1,712         |

### Figures in the above table are not National Statistics.

(1) From August 2010 publication onwards, vacancy statistics are subject to revision each month to take account of amendments to the live system.

(2) Vacancies notified (inflow) are all vacancy positions notified and added to JobCentres / JBOs of DEL.

(3) Outflows are those vacancies that have been notified to JobCentres / JBOs of DEL and have been placed or cancelled. This includes vacancies filled by JobCentres / JBOs or other recruitment channels and vacancies that have been withdrawn.

(4) Vacancies unfilled are those vacancies notified to JobCentres / JBOs of DEL remaining unfilled on the count date (the first Friday after the first Thursday of every month). Unfilled vacancies can be split into live and pending. Live vacancies are those for which job seekers can apply. Vacancies are pending while DEL staff await feedback from employers. Live vacancies are only available from May 2010.

(5) Monthly flow data is collected for a 4 or 5 week period between count dates. Unadjusted levels reflect either a 4 or 5 week period.

(6) Standardised levels convert volumes to a standard 4 1/3 week month. Figures are not seasonally adjusted.

(7) Percentage change calculated using non-rounded standardised figures.

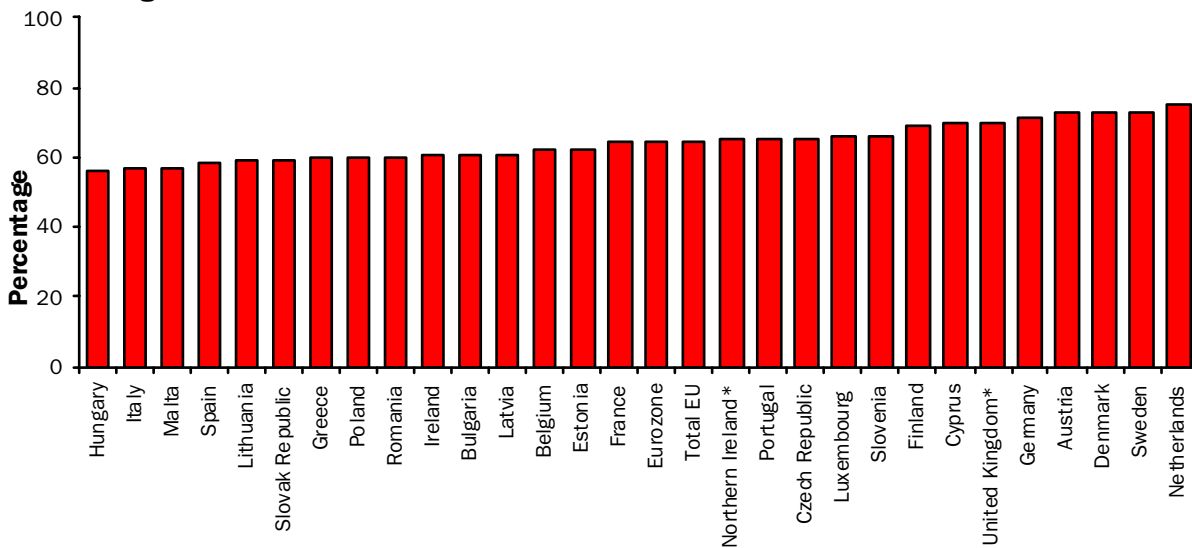
**For further details of Vacancy Statistics and Employment and Training Measures visit the DEL website at the following link: <http://www.delni.gov.uk/index/statistics-and-research/labour-market.htm> or alternatively contact the Department for Employment and Learning (DEL) by telephoning (028) 9025 7714.**

# International - Regional Analysis

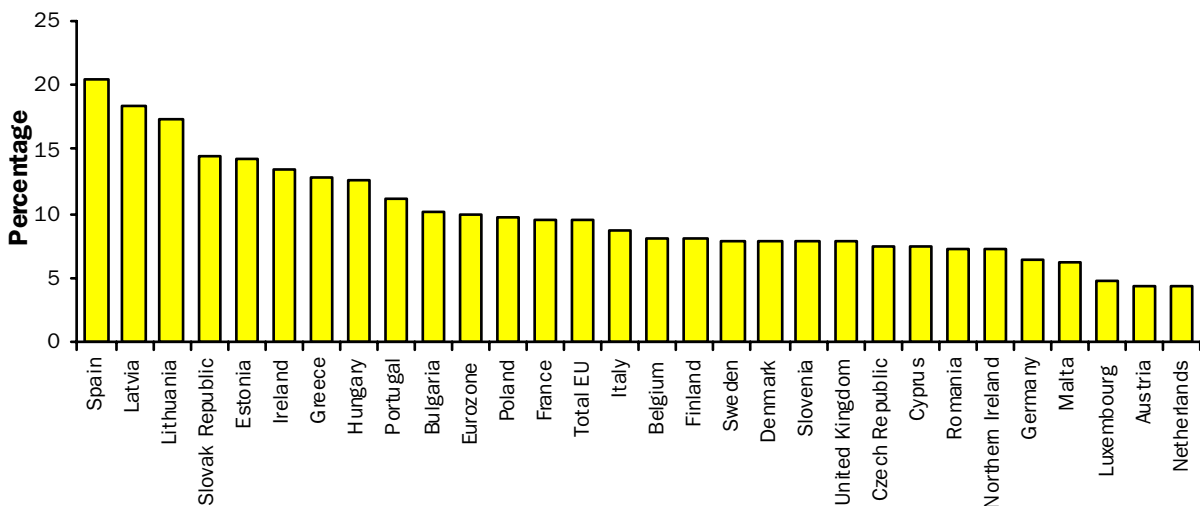


## International Comparisons of ILO Employment and Unemployment

**ILO Employment Rates (%) - Unadjusted**  
**Figure 13**



**Unemployment Rates (%) - Seasonally Adjusted**  
**Figure 14**



**Source: Eurostat**

\* A NI employment rate comparable to the EUROSTAT figures has been produced from the Calendar Quarter 3 2010 LFS dataset. It is based on the population aged 15-64 and differs from the working age rates published elsewhere in this publication, which take account of both the school-leaving and state pension age. The employment rate for the UK as published by EUROSTAT differs from the working age rate (16-64) published by ONS for the same reason. Figures behind the charts and further information can be found at; [International Comparisons of Employment](#)

Seasonally Adjusted Regional Summary, December 2010 - February 2011

Table 20

|                        | Labour Force Survey (LFS) <sup>1</sup> |                            |              |                            |                       |                            | Employee Jobs <sup>3</sup> | Claimant count rate (%) <sup>4</sup> | Claimant count level Percentage Change over the year | Claimant count level Percentage Change over the month | Jobs Density Indicator <sup>5</sup> |
|------------------------|--|----------------------------|--------------|----------------------------|-----------------------|----------------------------|----------------------------|--------------------------------------|--|---|-------------------------------------|
|                        | Employment                             |                            | Unemployment |                            | Economically Inactive |                            |                            |                                      |  |   |                                     |
|                        | Rate                                   | Annual Change <sup>2</sup> | Rate         | Annual Change <sup>2</sup> | Rate                  | Annual Change <sup>2</sup> |                            |                                      |  |   |                                     |
| North East             | 65.7                                   | -1.4                       | 10.4         | 1.2                        | 26.6                  | 0.6                        | 1,015                      | 6.5                                  | -3.0   | 0.1   | 0.69                                |
| North West             | 69.5                                   | 0.9                        | 7.8          | -0.7                       | 24.5                  | -0.4                       | 2,875                      | 5.1                                  | -5.8   | 0.3   | 0.76                                |
| Yorkshire & the Humber | 68.4                                   | -0.1                       | 9.2          | -0.4                       | 24.6                  | 0.4                        | 2,138                      | 5.5                                  | -6.0   | 0.2   | 0.75                                |
| East Midlands          | 71.5                                   | 0.2                        | 7.9          | 0.0                        | 22.3                  | -0.3                       | 1,801                      | 4.4                                  | -9.4   | 0.3   | 0.75                                |
| West Midlands          | 67.7                                   | -0.9                       | 9.7          | 0.4                        | 24.8                  | 0.6                        | 2,204                      | 5.7                                  | -9.0   | -0.1  | 0.77                                |
| East                   | 74.6                                   | 0.8                        | 6.0          | -0.6                       | 20.4                  | -0.4                       | 2,342                      | 3.6                                  | -8.0   | -0.1  | 0.77                                |
| London                 | 68.4                                   | 0.6                        | 9.2          | 0.3                        | 24.6                  | -0.9                       | 3,986                      | 4.4                                  | -3.0   | 0.0   | 0.90                                |
| South East             | 75.2                                   | 0.2                        | 5.9          | -0.4                       | 19.9                  | 0.1                        | 3,552                      | 3.0                                  | -11.9  | 0.0   | 0.82                                |
| South West             | 74.4                                   | 1.8                        | 6.0          | -0.4                       | 20.7                  | -1.6                       | 2,144                      | 3.0                                  | -7.8   | -0.1  | 0.82                                |
| England                | 71.0                                   | 0.4                        | 7.8          | -0.2                       | 22.9                  | -0.3                       | 22,055                     | 4.4                                  | -6.9   | 0.1   | 0.79                                |
| Wales                  | 67.7                                   | 0.3                        | 8.6          | -0.4                       | 25.7                  | 0.0                        | 1,135                      | 5.0                                  | -6.9   | -0.1  | 0.71                                |
| Scotland               | 71.0                                   | 0.5                        | 8.1          | 0.3                        | 22.6                  | -0.7                       | 2,237                      | 5.1                                  | 1.0  | -0.2  | 0.80                                |
| Great Britain          | 70.8                                   | 0.4                        | 7.8          | -0.1                       | 23.0                  | -0.3                       | 25,430                     | 4.5                                  | -6.2   | 0.0   | 0.79                                |
| N Ireland              | 66.4                                   | 0.3                        | 7.3          | 0.8                        | 28.3                  | -0.9                       | 695                        | 6.7                                  | 5.9  | 0.2   | 0.76                                |
| United Kingdom         | 70.7                                   | 0.4                        | 7.8          | -0.1                       | 23.2                  | -0.3                       | 26,125                     | 4.5                                  | -5.8   | 0.0   | 0.79                                |

<sup>1</sup> Employment and economic inactivity rates are based on working age population (16-64); Unemployment rates are based on 16+ population.

<sup>2</sup> Data refer to percentage point change of respective rate.

<sup>3</sup> As at September 2010 (thousands).

<sup>4</sup> As at March 2011: percentage of the workforce.

<sup>5</sup> Not seasonally adjusted – data relates to 2008. Jobs Density – total number of jobs in an area divided by the resident population of working age in that area.

# Further Information

## 9

### DEFINITIONS

#### Unemployment

The definition of unemployment used in the Labour Force Survey (LFS) is in accordance with that promulgated by the International Labour Organisation (ILO). The ILO unemployed include those without a job who were able to start work in the two weeks following their LFS interview and had either looked for work in the four weeks prior to interview or were waiting to start a job they had already obtained.

Unemployment rate - the percentage of economically active people who are unemployed. Please note that it is possible for the number of unemployed to increase and the unemployment rate to fall during the same period, as the latter measure is a ratio e.g. if the number of economically active has increased at a faster rate than the number unemployed the unemployment rate will fall.

#### Employment

The definition of ILO employed applies to anyone (aged 16 or over) who has done at least one hour's paid work in the week prior to interview, or has a job they are temporarily away from (e.g. on holiday). Also included are people who do unpaid work in a family business and people on Government-supported employment training schemes.

The ILO measures are particularly useful for examining short term and long term trends over time and key LFS time series data are available both seasonally adjusted and unadjusted.

#### Sampling variability

The LFS is a sample survey, and as such, estimates obtained from it are subject to sampling variability. If we drew many samples each would give a different result. The ranges shown for the LFS data in table 1 represent 95% confidence intervals i.e. we would expect that in 95% of samples the range would contain the true value. These confidence intervals have been calculated using data that is unadjusted for seasonality, with the relevant sampling errors produced applied to the seasonally adjusted data.

If the 'annual change' for an estimate has increased or decreased by more than the 'sampling variability of the change', this change would be statistically significant. The annual changes for the main LFS categories of employment,

unemployment and economic inactivity were tested for statistical significance. The results for December 2010 - February 2011 showed that none of the annual changes in these estimates were statistically significant at the 95% level.

Please see attached link for further LFS notes and definitions:

[Labour Force Survey Notes and Definitions](#)

#### LFS revisions

Information on the revision policy concerning labour market statistics can be found through the link below:

[Labour market statistics revisions policy](#)

#### Definition of 'working age'

The 'working age' definition, used in the calculation of employment and economic inactivity rates, was changed in August 2010 to include those aged from 16 to 64 for both men and women. Previously these rates were based on upper age limits of 59 for women and 64 for men, reflecting the state pension ages in the UK. However, between 2010 and 2020, the state pension age for women is increasing (by one month every two months) from 60 to 65, thereby making a change to the definition necessary.

The change in definition follows a UK wide public consultation on the issue and the approach being applied to Northern Ireland labour market statistics mirrors the approach that the Office for National Statistics (ONS) are applying to other UK regions. A consistent time series for the new headline rates has been produced and all future reference to working age rates will be based on the 16 to 64 definition. Please see link for further details:

[Change in female state pension age](#)

For a limited period, employment and economic inactivity rates based on the old working age definition (i.e. 16-59/64) will be available on the DETI website at:

[Comparison of working age rates.](#)

Please note that there are no implications for the headline unemployment rate, which will continue to be based on the economically active population aged 16 and over.

#### **Claimant Count definition**

Claimant Count figures are derived from records of claimants held at Social Security Offices. The term 'claimants' in the claimant count is used to include those who claim Jobseeker's Allowance (JSA) and National Insurance credits. The figures include severely disabled claimants, but exclude students seeking vacation work and the temporarily stopped. The Claimant Count is a very up-to-date measure of those eligible to claim a specific unemployment related benefit and data are available for a range of geographical sub-regions (e.g. District Council Areas, Parliamentary Constituency Areas, Travel-to-Work Areas and Wards). It also provides seasonally adjusted and unadjusted data and as a result is a useful measure for examining both short-term and long-term trends.

Seasonally Adjusted claimant count figures are provisional when published and subject to revision, mainly the following month and are only available at Northern Ireland level. Seasonally Adjusted totals are subject to an annual update (usually April) to take account of latest assessment trends.

The 'Flows' data that is published in section three relates to the date the claimant actually joined or left the claimant count. The Office for National Statistics (ONS) use a different methodology when collating flows. They count flows based on the month in which the flow was added to the system regardless of the actual period to which the flow related. Since the majority of flows are recorded on the system in the month they actually happen, there is not much difference between these two methodologies.

#### **Notes on the Annual Survey of Hours and Earnings**

Please note, changes in NI earnings over the year and relative to the UK can be influenced by a range of factors including the timing of pay settlements, the extent of overtime, and differences in the composition of the workforce. As ASHE is a sample survey, results are also subject to an associated level of sampling variability. Further information is available at:

[ASHE statistical bulletin](#)

[Definitions for the Annual Survey of Hours and Earnings ASHE](#)

#### **Quarterly Employment Survey (QES) Revisions**

QES estimates are revised quarterly to reflect the latest information provided to the Department by employers. Estimates can be revised back to the last Census of Employment reference period (September 2009). The September 2010 estimate first published in December 2010 has subsequently been revised down by (0.4%). For further details of QES revisions please see link below.

[Background notes to the Quarterly Employment Survey \(QES\)](#)

#### **Government Targets**

Data from the Labour Force Survey (LFS) and the Quarterly Employment Survey (QES) are used in the measurement of targets set in the Northern Ireland Executive's Programme for Government (PSA targets) See [Programme for Government](#) for further details. The LFS and QES data feed into productivity estimates for NI and are therefore indirectly used to measure progress towards PSA 1: Productivity growth. In addition, LFS data is used to measure the proportion of the working age population qualified to Skill levels 2 and 3. This data therefore feeds into the measurement of PSA 2: Skills for prosperity.

Details of progress towards these targets can be found at:

[Programme for Government Delivery Report](#)

#### **For further information:**

**AN ELECTRONIC VERSION OF THIS DOCUMENT WITH ASSOCIATED HYPERLINKS IS AVAILABLE ON THE HOME PAGE OF THE BRANCH WEBSITE AT:**

[www.statistics.detini.gov.uk](http://www.statistics.detini.gov.uk)

You can also contact Economic & Labour Market Statistics Branch by: -

#### **Writing to:**

Martin Monaghan  
Economic & Labour Market Statistics Branch,  
Room 110, Netherleigh, Massey Avenue, Belfast  
BT4 2JP.

Tel: (028) 9052 9421

Fax: (028) 9052 9658

Textphone: (028) 9052 9304