

NORTHERN IRELAND LABOUR FORCE SURVEY: JULY TO SEPTEMBER 2010

Published 24/11/10

This report provides a detailed analysis of the most recent (July – September 2010) quarterly information from the Northern Ireland Labour Force Survey. To allow detailed analysis most of the information used in the report is not seasonally adjusted unless otherwise stated for regional comparison purposes. The figures show:

- In Northern Ireland there are an estimated 762,000 persons, aged 16 – 64, in employment. This figure has increased by 3.4% (25,000 persons) during the last year and is 1.4% (10,000 persons) higher than the total five years ago.
- The seasonally adjusted unemployment rate in NI was estimated at 7.0%. This has increased by 0.3 percentage points from the estimate for the previous quarter, but is down 0.1 percentage points over the year. It remains below the UK rate (7.7%) and is the fourth lowest rate among the UK regions.
- The seasonally adjusted economic inactivity rate for all persons aged 16 – 64 (28.8%) has increased slightly in NI during the past five years (28.6% in 2005). It remains the highest of all the UK regions (the UK average rate is 23.2%).
- A higher proportion of economically inactive persons of working age in NI identify sickness or disability (28.0%) as their main reason for not wanting work, compared to the UK (23.6%).
- At April – June 2010, there were 707,000 private households in Northern Ireland with an average of 2.51 persons per household (2.36 persons per household in the UK). An estimated 22% of NI working age households were workless, compared to 19% in the UK.



A NATIONAL STATISTICS PUBLICATION

The United Kingdom Statistics Authority has designated these statistics as National Statistics, in accordance with the Statistics and Registration Service Act 2007 and signifying compliance with the Code of Practice for Official Statistics.

Designation can be broadly interpreted to mean that the statistics:

- meet identified user needs;
- are well explained and readily accessible;
- are produced according to sound methods, and
- are managed impartially and objectively in the public interest.

Once statistics have been designated as National Statistics it is a statutory requirement that the Code of Practice shall continue to be observed.

Contents

1
Executive Summary
Pages 1-3

2
Overall Labour
Market Structure
Pages 4-5

3
Economically Active
Pages 6-7

4
In Employment
Page 8-11

5
Unemployment
Pages 12-14

6
Economically Inactive
Pages 15-16

7
Education and
Training
Page 17-18

8
Regional and
International
Summary
Pages 19-20

9
Disability and the
Labour Market
Pages 21-22

10
Special Feature
Page 23-24

11
Technical Notes
Page 25-28

Executive Summary

1

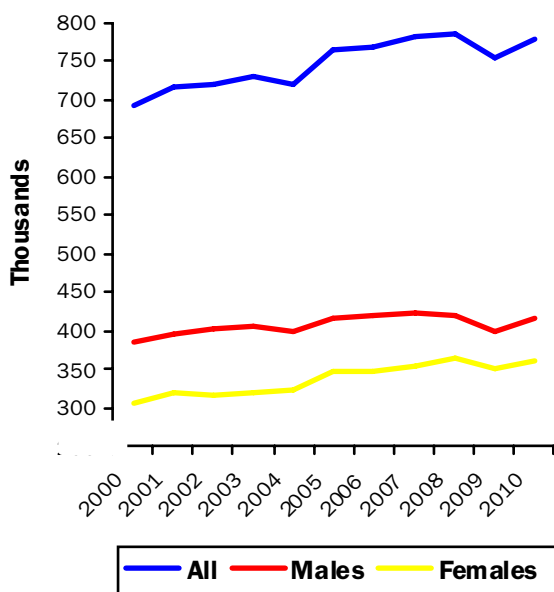
Introduction

The following estimates are based on the latest Labour Force Survey (LFS) July - September 2010 results. The LFS is a sample survey carried out by interviewing individuals in private households about their personal circumstances and work. It is the biggest regular household survey in Northern Ireland (NI) and provides a rich source of information on the labour force using internationally agreed concepts and definitions.

Employment (seasonally adjusted)

There are an estimated 778,000 persons in employment in NI. This figure has increased by 3.4% (26,000 persons) during the last year, but is still 1.1% (8,000 persons) lower than the estimate for the same period two years earlier. The employment rate for those aged 16-64 in NI (66.1%) was the lowest of the twelve UK regions and was 4.6 percentage points below the UK rate of 70.8. The highest rate was recorded by the South East of England at 75.2%

Employment (16+) Quarter 3 2000-2010



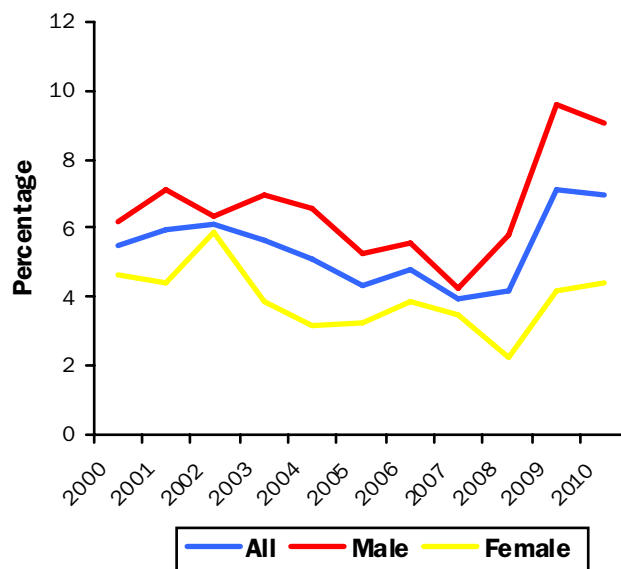
Up until the recent economic downturn, employment levels had generally been increasing during the last ten years. However, female employment increased at a slightly faster rate and the gap between male and female levels has narrowed over the period. The difference between the working age employment rate of males and females is currently estimated at 9.7 percentage points, compared to a 15.3 percentage point difference 10 years ago.

Almost two-fifths (37.9%) of female employees work part-time compared to 7.8% of males. The proportion of males working part time is at its highest on record (the figures were 5.7% for males and 40.7% for females ten years ago). Only 8.1% of females in employment are self-employed compared with 23.3% of males (5.6% and 19.7% respectively ten years previously).

Unemployment

The seasonally adjusted unemployment rate in NI (7.0%) is up 0.3 percentage points from the previous quarter, but down 0.1 percentage points from the previous year. It remains below the rate for the UK (7.7%) and is the fourth lowest rate among the twelve UK regions.

Unemployment Rate (16+) Quarter 3 2000-2010

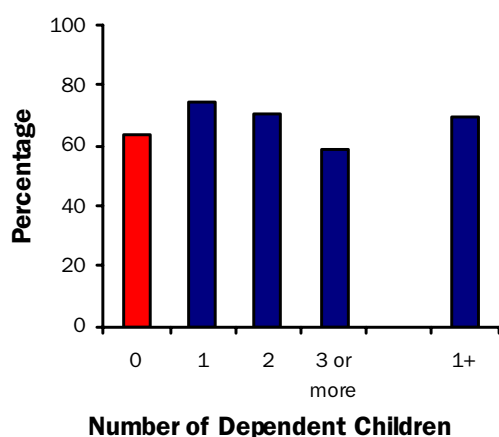


The male unemployment rate (9.1%) has risen by 2.9 percentage points during the last ten years, whilst the female rate (4.4%) fell by 0.2 percentage points during the same period. The male unemployment rate is currently 4.7 percentage points above the female unemployment rate, compared to a 1.5 percentage point difference in the unemployment rates ten years ago. Unadjusted data shows that almost three fifths of unemployed men (58.9%) are long-term unemployed, which is higher than the proportion ten years ago (46.4%).

Economic Activity

There are an estimated 818,000 persons of working age economically active in NI at July - September 2010, up 97,000 from ten years ago. The seasonally adjusted working age economic activity rate (71.2%) for NI is the lowest of the twelve UK regions and is 5.6 percentage points below the UK rate of 76.8%. At 78.3% the working age economic activity rate for males is an estimated 14.1 percentage points higher than that for females (64.2%). The current 14.1 percentage point differential between the activity rates of males and females has narrowed from a 17.5 percentage point gap ten years ago.

Working Age Female Economic Activity Rates by Number of Dependent Children¹



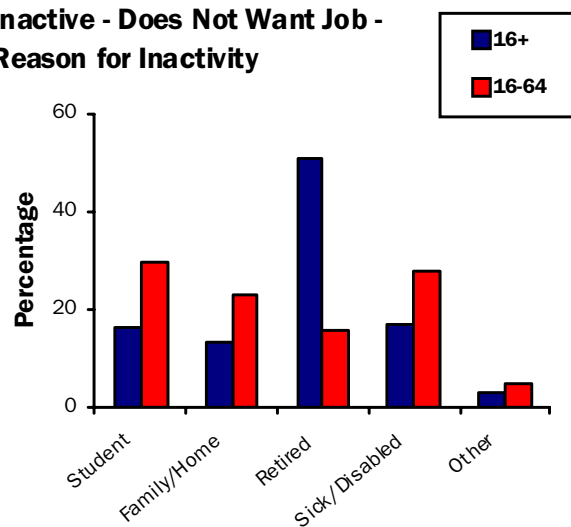
¹ The analysis on the effect of dependent children (under 19) on the economic activity rates of females is based on the head or partner of the head of family unit only.

An estimated 70.0% of females of working age with dependent children under 19 were economically active, which is higher than the rate for those without dependent children (64.2%). However, having three or more dependent children resulted in a much lower economic activity rate (58.8%) for females in NI.

Economic Inactivity

At July - September 2010 there were 560,000 persons aged 16 and over who were economically inactive in NI, with a resulting economic inactivity rate of 40.1% for this age group. Unadjusted data showed that around 8% of these economically inactive persons (47,000) wanted a job, but did not satisfy the criteria of being available for work and actively seeking work to be classified as unemployed.

Inactive - Does Not Want Job - Reason for Inactivity



The largest category of the economically inactive 16+ population that do not want a job were retired persons (50.8%). However, for those of working age the largest economically inactive category were students (29.3%). NI also has a higher percentage of economically inactive of working age that do not want a job because of sickness or disability (28.0%), compared to the UK (23.6%).

Education and Training

In July - September 2010, 38.2% of economically inactive persons had no formal qualifications, compared to 13.6% of the economically active population. Only 6.5% of the economically inactive had a degree level qualification compared to 25.5% of the economically active. Of those employees aged 16-64, 6.0% had undergone job-related education or training in the last 4 weeks.

Disabled Persons in the Labour Market

One in five persons (19.4%) of working age in NI described themselves as having a current long-term disability, which is similar to the figure of 21.2% for the UK as a whole. The proportion of working age persons with a disability and who were economically inactive stood at 62.6% and this compared with a rate of 20.3% for those without disabilities. Furthermore, just under a third (31.7%) of disabled persons are in employment compared to 74.6% of non-disabled persons.

Special Feature: Households

At April - June 2010 NI had an average of 2.51 persons per private household compared to a UK average of 2.36 persons per household. NI (2.51) and London (2.58) were the regions with the highest number of persons per household.

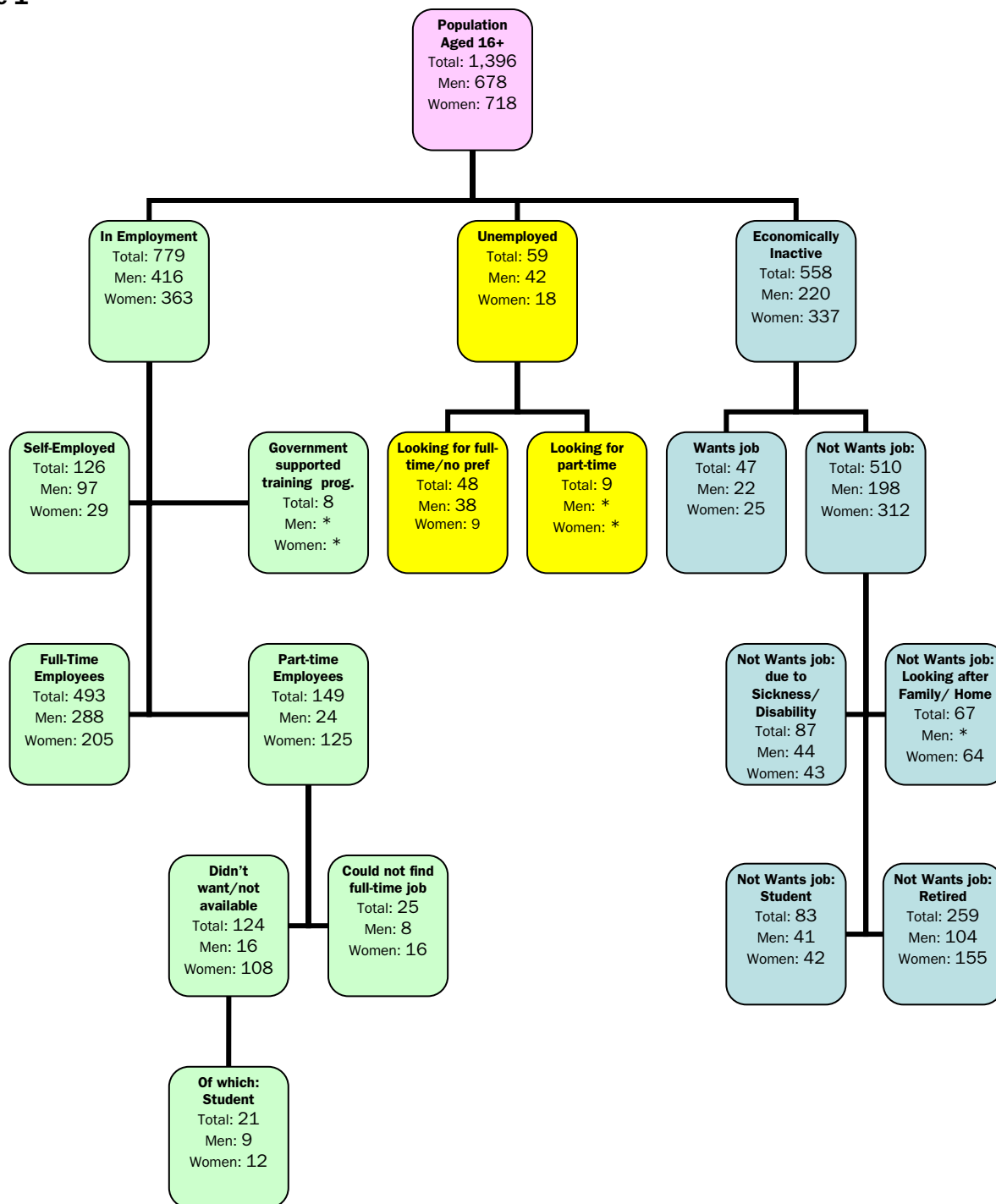
In terms of household types; couples with children accounted for the largest proportion (33.9%) of NI households, whereas one person households were the most common for the UK as a whole (29.0%). There were also proportionally more lone parent households in NI than in the UK (13.3% compared with 10.7%).

Households were also classified according to the economic activity of their members. Forty-seven per cent of NI, working age, households are classified as workrich households (where all persons are in employment). In contrast, 22% of NI households were workless.

Overall Labour Market Structure

2

Overall Labour Market Structure (16+ Population, thousands), July - September 2010
Figure 1



Notes:

This chart illustrates the structure of the private household population in relation to the key ILO defined categories of in employment, unemployed and economically inactive (see Technical Notes for definitions).

* Too small for a reliable estimate (this explains why a gender split for some categories is omitted).

Figures may not sum due to rounding.

- **A higher proportion of men than women are economically active.**

Table 1 and Figure 2 summarise the economic activity of the population in Northern Ireland (NI). It shows that 60% of LFS respondents aged 16 and over, were economically active (either in employment or seeking work). However, results for males and females differ significantly with 68% of males compared to 53% of females falling into this category.

- **A higher proportion of men than women are unemployed.**

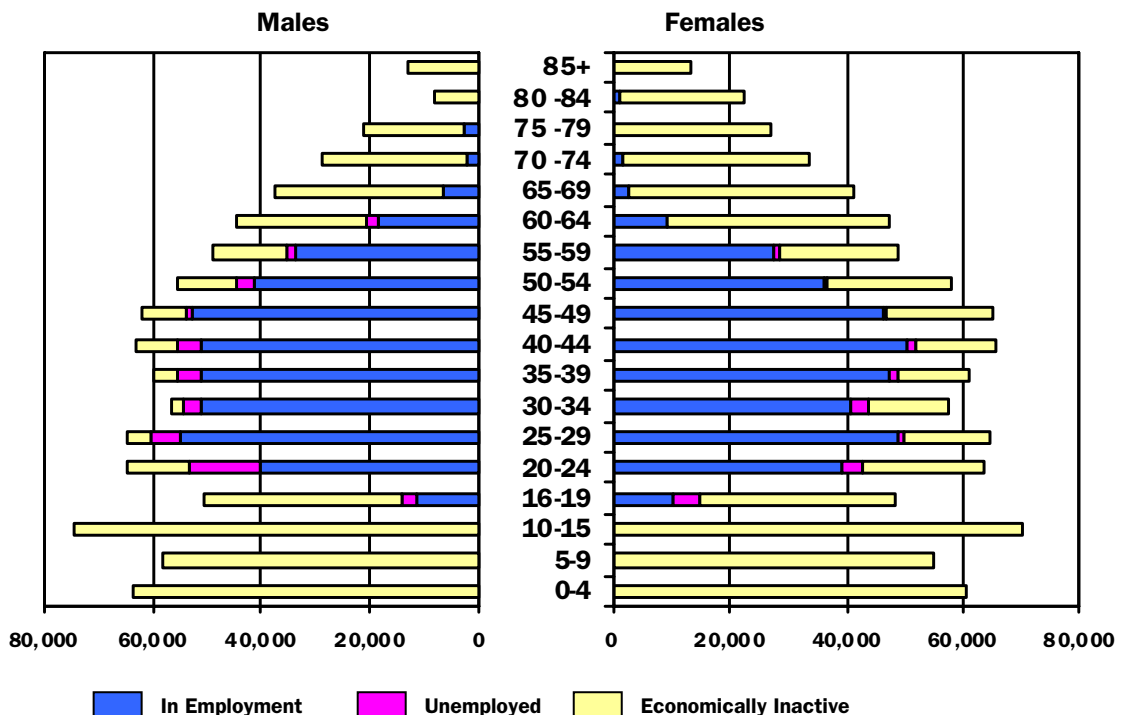
Overall, 4% of the population aged 16 and over are unemployed, however, again this differs for men and women – 6% of males are unemployed compared to 2% of females. In addition, 61% of the male population are in employment compared to 51% of the female population.

Private Household Population (16+) by Economic Status, July – September 2010
Table 1 Percentage/Number

	Male	Female	All persons
Economically active	67.5	53.0	60.1
In employment	61.4	50.5	55.8
Unemployed	6.1	2.5	4.3
Economically inactive	32.5	47.0	39.9
Total household population	678,000	718,000	1,396,000

Percentages may not sum due to rounding.

NI population structure by age, sex and economic activity
Figure 2



Economically Active

3

People aged 16 and over who are in employment or unemployed are classified as economically active. In July - September 2010 there were 838,000 economically active people in NI.

July - September 2010

Economically active-male:
458,000 (68%)

Economically active-female:
380,000 (53%)

Economically active-all persons:
838,000 (60%)

16+ population

- **The working-age economic activity rate for males is 14 percentage points higher than that for females.**

The economic activity rate is the proportion of persons in any specified age group who are economically active. The economic activity rate for persons aged 16-64 was higher for males (78.5%) than females (64.5%) at July - September 2010. Figure 3 shows the economic activity rates for males and females of working-age from July - September 2000 to July - September 2010. The current 14.0 percentage point differential between the activity rates of males and females is lower than the 17.3 percentage point gap 10 years ago.

Economic Activity Rates (16-64), 2005 - 2010

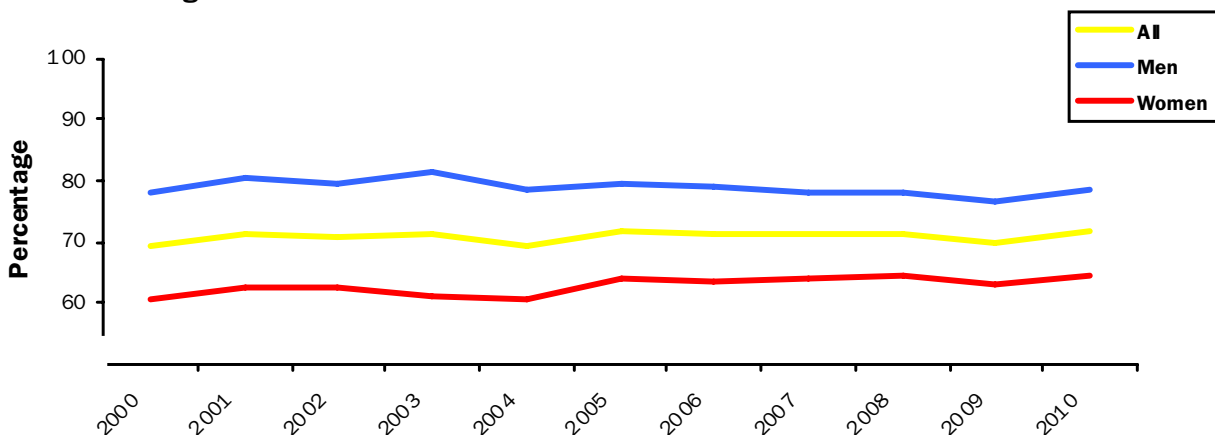
Table 2 Percentage

	Economic Activity Rates (%)		
	Male	Female	All
July - September 2005	79.5	64.2	71.7
July - September 2006	79.0	63.6	71.2
July - September 2007	78.2	64.2	71.1
July - September 2008	78.2	64.4	71.2
July - September 2009	76.4	63.0	69.7
October - December 2009	76.5	63.0	69.7
January - March 2010	78.1	64.0	71.0
April - June 2010	78.2	63.8	70.9
July - September 2010	78.5	64.5	71.5

The economic activity rate gap between males and females has been historically larger for NI than for the UK (in July - September 2000 the gap in NI was 17.3 percentage points, compared to 15.0 percentage points in the UK). However, for July - September 2010 the NI differential had narrowed to 14.0 percentage points, 1.4 percentage points higher than the equivalent UK figure (12.6 percentage points).

Economic Activity Rates (16-64), Quarter 3 2

Figure 3



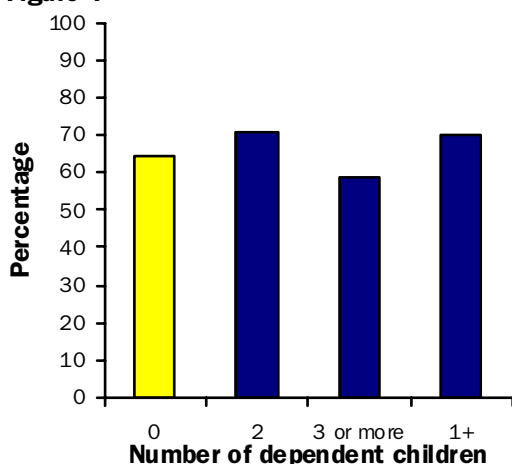
The household dataset affords the opportunity to analyse the economic activity of people by their family or household type. The dataset can be used to analyse people with dependent children, lone parents and other family types. The household dataset is only available for quarters 1 and 3 of each year. The most recent data relates to April – June 2010.

- **Women with 3 or more dependent children have a 5 percentage point lower economic activity rate than those without dependent children.**

Economic activity rates are affected by the presence of dependent children aged under 19. This impact has different consequences for the male and female heads of family units¹. Males with dependent children had a considerably higher economic activity rate (93.2%) than those without (71.4%). For females, 70.0% with dependent children were economically active compared to 64.2% of those without dependent children. This compares to a UK activity rate of 72.3% for women with dependent children and 71.4% for those without. Having three or more dependent children resulted in a lower economic activity rate (58.8%) for females in NI as shown in Figure 4.

Economic Activity Rates (16-64) for Females by Number of Dependent Children, April - June 2010

Figure 4



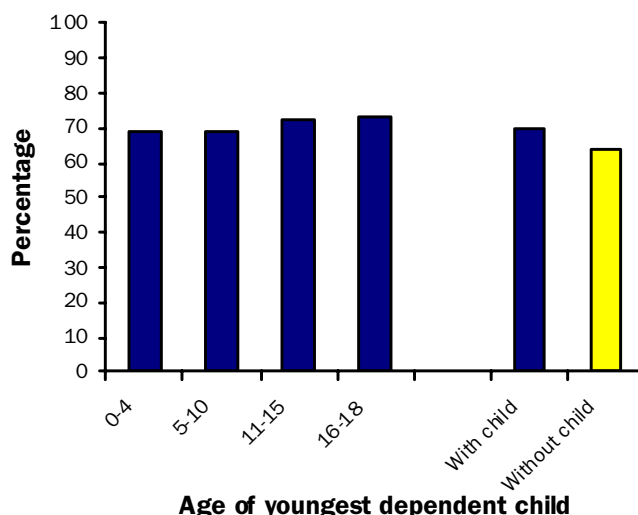
¹ The analysis on the effect of dependent children (under 19) on the economic activity rates of males/females is based on the head or partner of the head of family unit only. It does not include family members who are aged 16-64 but who do not have parental responsibilities such as an elder sibling.

- **Economic activity rates of the female head of family were affected by the age of the youngest dependent child.**

Economic activity rates for female heads of family were found to be influenced by the age of the youngest dependent child. When the youngest dependent child was aged 0-4 the activity rate (69.0%) was 3.8 percentage points lower than the rate for the 16-18 (72.8%) age group.

Economic Activity Rates for Females by Age of Youngest Dependent Child, April - June 2010

Figure 5



At April – June 2010 there were an estimated 55,000 female lone parents of working age; the equivalent number for males was too small to provide a reliable quotation. Three fifths (62.4%) were economically active while the remainder (37.6%) were classified as economically inactive. In all, 63.3% of lone parents were economically active.

In Employment

4

People in employment are defined as those aged 16 and over who did at least one hour's paid work in the reference week (either as an employee or self-employed); those who had a job which they were temporarily away from (on holiday for example); those participating in government employment or training programmes; and those doing unpaid family work.

July – September 2010

In employment-male:

416,000 (61%)

In employment-female:

363,000 (51%)

In employment-all persons:

779,000 (56%)

16+ population

- **There were 762,000 persons, aged 16 – 64, in employment in NI in Q3 2010, an increase of approximately 10,000 in the last five years.**

Table 3 shows estimates of employment rates over a five-year period from July - September 2005 to July - September 2010 and provides a comparison of rates over the last four quarters. At July - September 2010 there were 762,000 persons of working-age in employment, with the working-age employment rate estimated at 66.3%. The number of working age persons in employment has risen by an estimated 25,000 during the last year and the total is 10,000 higher than the total five years ago. However, the latest estimate is 12,000 lower than the figure for July - September 2008.

Employment Rates and Numbers (16-64), 2005 – 2010

Table 3

	Percentage/Number	
	Employment rate	Total in employment
July- September 2005	68.4	752,000
July - September 2006	67.6	753,000
July - September 2007	68.2	768,000
July - September 2008	68.1	774,000
July - September 2009	64.5	737,000
October – December 2009	65.5	749,000
January - March 2010	66.0	756,000
April - June 2010	66.2	759,000
July - September 2010	66.3	762,000

- **Fewer females than males work beyond the age of 60.**

Table 4 shows that the age distribution of employed males is very similar to that for employed females. The only apparent difference relates to the older age categories where less females work beyond the age of 60, reflecting the historic difference in the pension age for males and females.

Age Distribution of Those in Employment (16+), July – September 2010

Table 4 Percentage/Number

	Male	Female	All persons
16-19	2.8	2.8	2.8
20-24	9.6	10.8	10.2
25-29	13.1	13.5	13.3
30-34	12.3	11.2	11.8
35-39	12.2	13.0	12.6
40-44	12.2	13.9	13.0
45-49	12.7	12.8	12.8
50-54	9.8	10.0	9.9
55-59	8.1	7.7	7.9
60+	7.1	4.3	5.8
All 16+ (100%)	416,000	363,000	779,000

Percentages may not sum due to rounding

Table 5 provides an analysis of the private household population aged 16 and over who were in employment. The breakdown of employees into full-time and part-time employment is based on the respondent's own description of their main employment rather than on the number of hours actually or usually worked.

- **Only 8% of females in employment are self-employed, compared to 23% of males.**

It is noticeable that, while 23.3% of males in employment are self-employed, just 8.1% of females are in this category. The LFS also gathers information on persons with a second job in addition to their main activity and 3% of all employees stated that they had a second job.

Employment Status of Those in Employment (16+), July - September 2010

Table 5 Percentage/Number

	Male	Female	All persons
All employees	75.1	90.8	82.4
FT	92.2	62.1	76.8
PT	7.8	37.9	23.2
Self employed	23.3	8.1	16.2
Govt. schemes	*	*	1.1
Total in employment (100%)	416,000	363,000	779,000

*Cell size too small for a reliable estimate

Percentages may not sum due to rounding

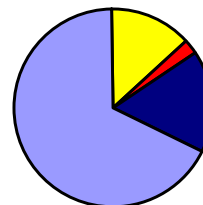
Total includes a small number of unpaid family workers.

- **Almost two-fifths (38%) of female employees are part-time compared to 8% of males.**

One of the main features of the NI labour market is the contribution which part-time jobs make to female employment. Of all female employees, 37.9% are part-time compared with just 7.8% of males. In July - September 2000, the equivalent figures were 40.7% and 5.7% respectively. Figure 6 shows the reasons given by female employees for working part-time. The main reasons given by females for working part-time were that they did not want a full-time job (76%) and that they could not find a full-time job (13%).

Reasons For Females Working Part-time, July - September 2010

Figure 6



Standard Industrial Classification (SIC) 2007

The Standard Industrial Classification (SIC) is used in classifying business establishments and other statistical units by the type of economic activity in which they are engaged. It has been revised several times. Revision is necessary because, over a period of time, new products and new industries to produce them, emerge and shifts of emphasis occur in existing industries.

At 1st January 2008, the most recent revision brought about SIC (2007) from the existing SIC (2003). As such, Table 6 and related text are presented using the new SIC (2007) format.

Please note, that due to this revision, data are not directly comparable to those presented in earlier publications.

Employment by Industry (SIC 2007)

- **The largest industrial sections are Public administration, education & health (35%) and Distribution, hotels & restaurants (19%).**

Table 6 provides an analysis of persons in employment by industry (SIC 2007). The major industries in terms of employment were Public administration, education & health (35.2%) and Distribution, hotels & restaurants (19.5%). Relatively few persons were employed in the Energy and water industry.

- **Over one half of employed females work in the Public administration, education and health industries.**

There are differences between males and females in terms of the industries in which they are employed. Approximately a third of males are employed in the combined Manufacturing (16.3%) and Construction (14.4%) industries, while relatively few females work in these sectors. In contrast, over a half of females (53.0%) work in Public administration, education and health industries, compared to approximately one-fifth of males (19.7%).

Persons in Employment by Industry Section, July - September 2010 (SIC 2007)

Table 6

	Percentage/Number		
	Male	Female	All persons
Agriculture, forestry and fishing	5.2	*	3.2
Energy and water	3.2	*	1.9
Manufacturing	16.3	5.2	11.1
Construction	14.4	*	7.9
Distribution, hotels and restaurants	19.0	20.0	19.5
Transport and communication	9.5	2.4	6.2
Banking and finance	10.3	11.6	10.9
Public admin, education and health	19.7	53.0	35.2
Other services	2.4	6.0	4.1
All industries ¹	409,000	358,000	767,000

*Cell size too small for a reliable estimate
Percentages may not sum due to rounding

¹Total excludes those on college based government training and employment programmes and those who did not state industry.

A similar proportion of males (19.0%) and females (20.0%) are employed in the Distribution, hotels and restaurants industry, which is proportionately the second largest industry overall.

Employment by Occupation

Table 7 provides an analysis of persons in employment by occupation using SOC2000 (Standard Occupational Classification) codes adopted since Spring 2001. These estimates are based on a different classification from those used previously and as a result, are not directly comparable.

- **Skilled Trade occupations accounted for the largest proportion of persons in employment (16%).**

Skilled Trade occupations were the largest group with 15.7% of persons in employment, followed by Administrative and Secretarial occupations (13.8%) and Professional occupations (13.8%).

- **A large proportion of males (28%) work in Skilled Trade occupations whereas the largest group for females was Administrative and Secretarial (22%).**

There are obvious differences between males and females in terms of the occupations in which they are employed. A large proportion of males (27.5%) work in Skilled Trade occupations, whereas the number of females in this occupation is too small to be reliably estimated. Conversely, almost a quarter (22.3%) of females work in Administrative and Secretarial occupations compared to just 6.4% of males.

A higher proportion of males in employment are Managers and/or Senior Officials compared to females (14.4% for males as opposed to 8.6% for females).

Persons in Employment by Occupation, July – September 2010

Table 7 Percentage/Number

	Male	Female	All persons
Managers and/or Senior Officials	14.4	8.6	11.7
Professional Occupations	12.4	15.3	13.8
Assoc. Professional and Technical	9.5	15.0	12.1
Administrative and Secretarial	6.4	22.3	13.8
Skilled Trade	27.5	*	15.7
Personal Service	*	16.6	8.4
Sales and Customer Service	4.5	8.8	6.5
Process, Plant & Machine Operatives	12.9	*	7.4
Elementary	11.1	10.0	10.6
All occupations ¹	411,000	360,000	771,000

*Cell size too small for a reliable estimate

Percentages may not sum due to rounding

¹Total excludes those who did not state their occupation.

Unemployment

5

The unemployed are defined as those without a job in the reference week who were available to start work within the next fortnight and who had either looked for work at some time in the last four weeks or were waiting to start a job already obtained.

July - September 2010
Unemployed-male: 42,000 (6%)
Unemployed-female: 18,000 (2%)
Unemployed-all persons: 59,000 (4%)
16+ population

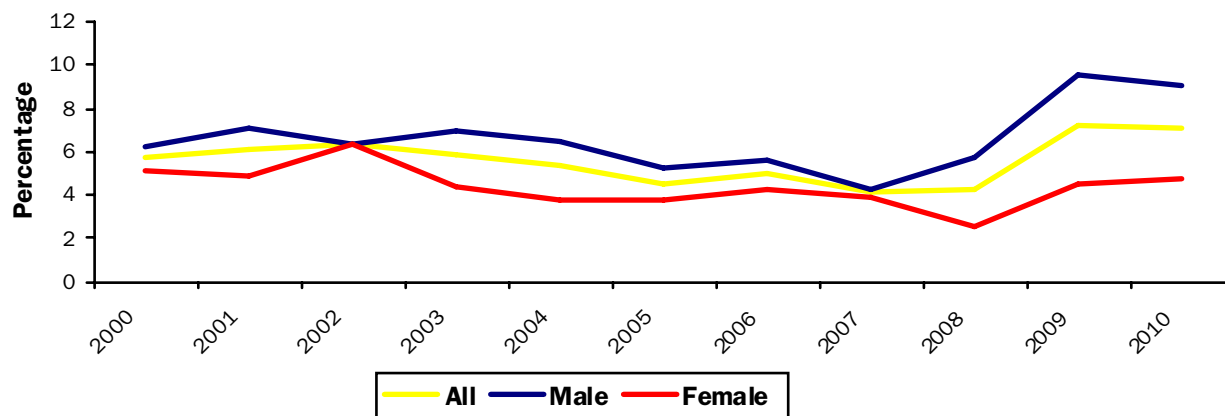
Overall, 4% of respondents aged 16 and over were unemployed and 6% of men were unemployed compared to 2% of women.

- **The unemployment rate for males is 9.1% compared to 4.7% for females.**

Unemployment rates can be obtained from the survey by expressing the number unemployed as a percentage of all those economically active (see Table 8). Unadjusted results show a 2.5 percentage point increase in the overall unemployment rate over the last five years.

Unemployment Rates, 2000-2010

Figure 7



Unemployment Rates, 2005 – 2010 (Unadjusted for seasonality)

Table 8

	Percentage		
	Male	Female	All persons
July - September 2005	5.2	3.7	4.6
July - September 2006	5.5	4.3	5.0
July - September 2007	4.3	3.9	4.1
July - September 2008	5.8	2.6	4.3
July - September 2009	9.6	4.4	7.2
October – December 2009	7.8	3.6	5.9
January - March 2010	9.3	4.1	6.9
April - June 2010	8.9	3.8	6.6
July - September 2010	9.1	4.7	7.1

Fluctuations in the unemployment rates from each quarter will be partly due to seasonal factors – please refer to the seasonally adjusted figures in Section 8.

The unemployment rate for July - September 2010 (7.1%) represented an decrease of 0.1 percentage points from the same period one year ago.

- Over half (52%) of unemployed persons are aged 16-29.

Table 9 shows that over a half of unemployed persons are aged 16-29 (52%) with those aged 30 or over comprising the remaining 48%.

Age Distribution of the Unemployed, July - September 2010

Table 9 Percentage/Number

	Male	Female	All persons
16-29	52.3	52.4	52.4
30+	47.7	47.6	47.6
All 16+ (100%)	42,000	18,000	59,000

* Cell size too small for a reliable estimate

Duration of Unemployment

- Forty-five per cent of unemployed persons are long-term unemployed.

In July - September 2010, an estimated 45% of unemployed persons had been out of work and seeking employment for more than one year. This pattern was different for males and females; 59% of males were long term unemployed, while the estimate for females was too small to quote – see Table 10.

Duration of Unemployment in Northern Ireland, July - September 2010

Table 10 Percentage/Number

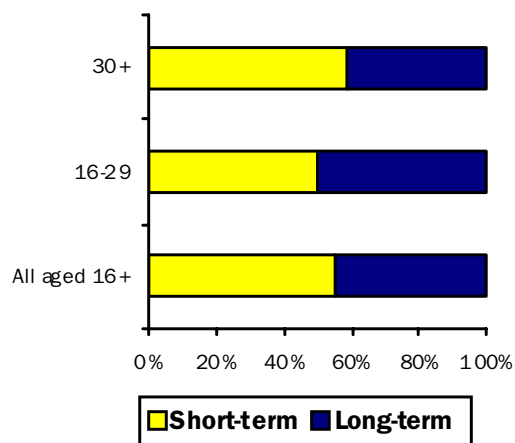
	Male	Female	All persons
Short-term unemployed	41.1	85.8	54.6
Long-term unemployed	58.9	*	45.4
All unemployed (100%) ¹	42,000	18,000	59,000

*Cell size too small for a reliable estimate. Percentages may not sum due to rounding.

¹Excludes those that did not answer the questions on duration of unemployment.

The proportion of unemployed persons who were unemployed for one year or more is shown separately for younger and older age groups in Figure 8. Long-term unemployed accounted for 45% of the total unemployed and short-term unemployed for 55%. Of those aged 16-29, 50% were long-term unemployed, while for those in the 30+ category, 41% were long-term unemployed.

Long-term and Short-term Unemployed by Age Group, July - September 2010
Figure 8



Methods Used By the Unemployed to Seek Work

- The two main methods of looking for work are visiting JobCentre Offices and answering advertisements/ studying 'situations vacant' columns in newspapers and journals.

For unemployed persons, the two most common methods of looking for work were answering advertisements/studying 'situations vacant' columns in newspapers and journals (46%) and visiting JobCentre Offices (42%) as can be seen in Table 11.

Main Method of Seeking Work for Unemployed Persons (16+), July - September 2010

Table 11 Percentage/Number

	Male	Female	All persons
Advertisements/ Situations vacant	45.5	48.0	46.1
JobCentre Offices	46.5	*	41.6
Other methods	*	*	*
All methods (100%)	42,000	18,000	59,000

*Cell size too small for a reliable estimate.

Total includes those who were not seeking work in the previous four weeks because they were awaiting results of a job application, but excludes those who did not answer the question.

Occupation of Unemployed Persons in Last Job

The survey also asks unemployed persons their occupation in their most recent job, if applicable. Approximately 44,000 persons gave a previous occupational group. Estimates for a breakdown by occupational grouping were mostly too small to be reliably quoted. However, results did show that 10,000 had been in skilled trade occupations, whilst 12,000 had been in elementary occupations.

Economically Inactive

6

People aged 16 and over who are not in employment and are not unemployed are classified as economically inactive.

July - September 2010
Economically inactive-male: 220,000 (32%)
Economically inactive -female: 337,000 (47%)
Economically inactive -all persons: 558,000 (40%)
16+ population

In July – September 2010 there were 558,000 economically inactive people in NI – this represented 40% of the 16+ population.

- **Economic inactivity is highest for those aged 65 and over.**

For both males and females, economic inactivity is relatively high during the ages associated with full-time education (16-24); it drops during the “prime” working years and picks up towards retirement. For women this trend is affected by the impact of family commitments during the “prime” working years – see Table 12.

Age Distribution of the Economically Inactive NI, July - September 2010

Table 12 Percentage/Number

	Male	Female	All persons
16-24	21.6	16.1	18.3
25-34	*	8.4	6.2
35-44	5.3	7.5	6.6
45-54	8.7	11.7	10.5
55-64	17.0	17.2	17.1
65+	44.5	39.0	41.2
All 16+ (100%)	220,000	337,000	558,000

Percentages may not sum due to rounding.

- **One half (50%) of the economically inactive in the UK are aged 65 or over.**

Table 13 shows the comparable age distribution of the economically inactive for the UK. It highlights that a higher proportion of the inactive in the UK are concentrated in the older age groups, with 49.8% being aged 65 and over, compared to 41.2% in NI. In contrast, the UK has a much lower proportion of their economically inactive population in the youngest age group (13.2% of the UK economically inactive population are aged 16-24, compared to 18.3% for NI). These differences are partly explained by NI’s younger population structure.

Age Distribution of the Economically Inactive UK, July - September 2010

Table 13 Percentage/Number

	Male	Female	All persons
16-24	15.2	11.9	13.2
25-34	3.8	8.7	6.8
35-44	4.9	8.6	7.2
45-54	6.1	7.6	7.0
55-64	15.4	16.4	16.0
65+	54.5	46.7	49.8
All 16+ (100%)	7,142,000	10,931,000	18,073,000

Percentages may not sum due to rounding.

Reasons for Economic Inactivity

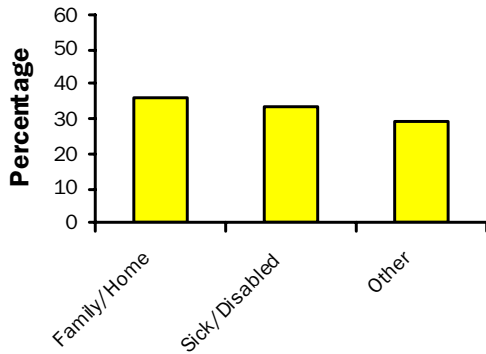
- **Around 8% of the economically inactive want a job.**

The economically inactive population is comprised of two main groups; those who do not want a job (91.5% in July - September 2010) and those who do want a job (8.5%). Equivalent figures for the UK show that 14.0% of the economically inactive want a job, whereas the remaining 86.0% do not. The main reasons given by those who want work in NI, but are not seeking work or available to start work are shown in Figure 9.

- Family/home commitments is the main reason for not looking for a job.

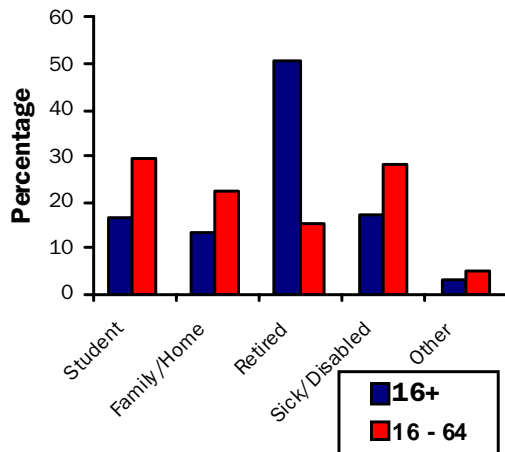
Of the economically inactive who want a job, 36.5% were not looking for work due to family/home commitments and 34.0% were not looking because of sickness or disability. "Other" includes students and discouraged workers (those not in a job who would like work and whose reason for not seeking work in the past four weeks is that they believe there are no jobs available).

Inactive - Wants Job (16+) July - September 2010
Figure 9



As mentioned previously, 91.5% of the economically inactive do not want a job and this group can be divided into the categories shown in Figure 10.

Inactive - Does Not Want Job - Reason for Inactivity (16+ and 16-64) July - September 2010
Figure 10



- Of the 16+ population who do not want a job 51% are retired.

Overall for the total population, the main reason for the inactive not wanting work was retirement (50.8%).

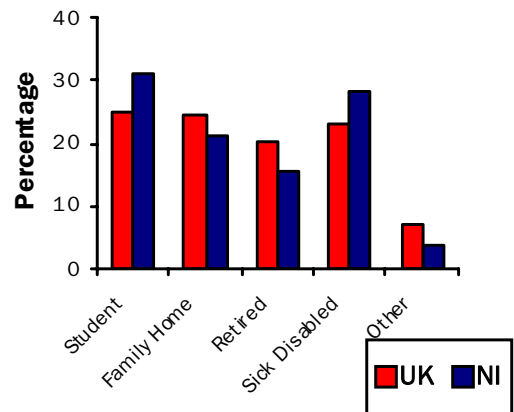
- Nearly one third (29%) of the population aged 16 - 64 who do not want a job are students.

For the working-age population the main reasons for not wanting work were students (29.3%), followed by those who were sick/disabled (28.0%) and those looking after family/home (22.6%). Men were more likely to cite education as their main reason (39.9%) for inactivity and women family commitments (33.3%).

- In comparison to the UK, NI has a higher percentage of the economically inactive, who are sick or disabled.

Figure 11 compares the working-age inactive population of NI with the UK. NI had a higher proportion that did not want work because of sickness or disability, compared to the UK (28.0% compared to 23.6%). NI also has a higher proportion of students (29.3%) as the main reason for not wanting work, compared to the UK (21.6%). This could be partly explained by NI's younger population structure.

Inactive - Does Not Want Job - Reason for Inactivity (UK and NI, 16 - 64) July - September 2010
Figure 11



Education and Training

7

Qualifications of the Employed and the Unemployed

- **Almost two-fifths (38%) of economically inactive persons had no formal qualifications at July - September 2010.**

Table 14 shows that the qualification levels of those aged 16-64 in employment or economically active are consistently higher than those who are economically inactive. Of those in employment 36.9% had higher qualifications, compared to 11.3% of the economically inactive. Conversely, 38.2% of economically inactive people had no formal qualifications, compared with 12.6% of those in employment. The economically active comprise the employed and the unemployed. The qualification levels of this group are higher than the economically inactive. Of the economically inactive, only 6.5% had degree level qualifications, while 38.2% had no qualifications at all. This compares to figures of 25.5% and 13.6% for the economically active population.

Qualifications by Economic Activity (16 - 64), July - September 2010

Table 14

Percentage/Number

	In employment	Econ. active	Econ. inactive	All Persons
Degree or higher	26.8	25.5	6.5	20.1
Other higher below degree	10.1	9.6	4.8	8.2
A level or equivalent	25.5	25.6	20.9	24.2
GCSE A-C or equivalent	18.5	19.0	23.1	20.2
Other qualifications	6.5	6.7	6.6	6.7
No Qualifications	12.6	13.6	38.2	20.6
All (100%)	753,000	812,000	323,000	1,134,000

* Cell size too small for a reliable estimate.

Figures may not sum due to rounding.

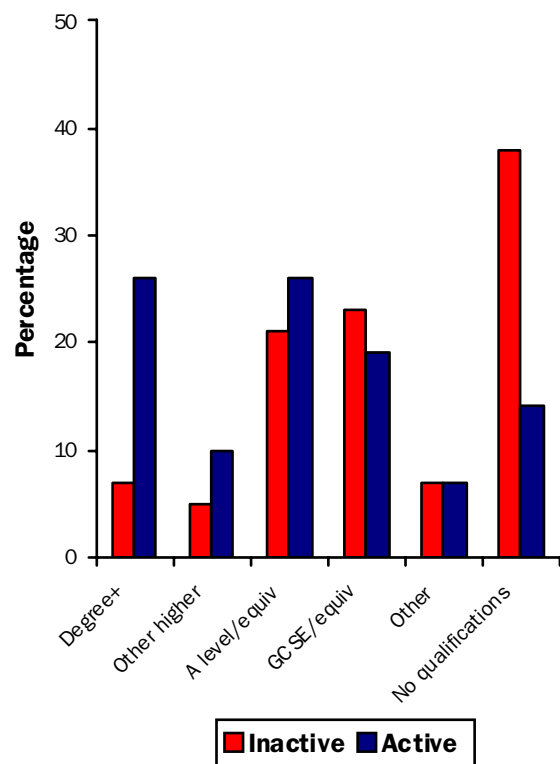
Total excludes those who did not state their highest level of qualification.

Please refer to Technical Notes for full definition of educational attainment categories.

Only men and women aged 16 - 69, and those of any age with a job were asked the question on qualifications.

Qualifications By Economic Activity, July - September 2010

Figure 12



Job-related Training

- **A higher proportion of younger employees receive job-related training.**

The LFS can be used to identify those employees who receive education or training connected with their job. Table 15 and Figure 13 overleaf show how the proportion of employees receiving job-related education or training varies with age and gender. In July - September 2010, 6.0% of employees of working-age had undergone some job-related training within the previous four weeks. For both males and females, those in the younger age group are more likely to be recipients than those in the older age group, with 8.1% of males and 6.5% of females in the 16-34 age groups having received such training.

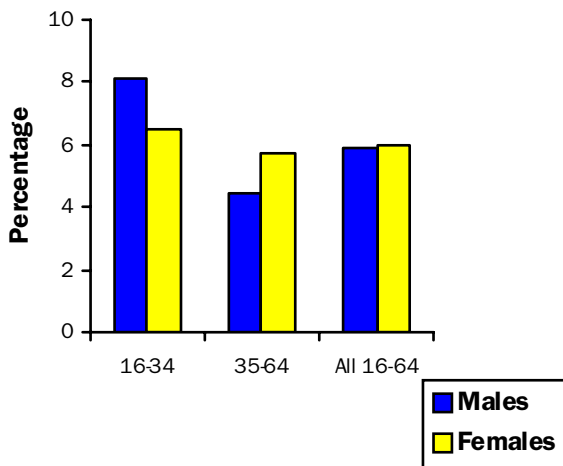
Employees Receiving Job-related Training By Age Group (16 - 64), July - September 2010

Table 15

	Percentage		
	Male	Female	All persons
16-34	8.1	6.5	7.3
35-64	4.4	5.7	5.1
All 16-64	5.9	6.0	6.0

Employees Receiving Job-related Training By Age, July - September 2010

Figure 13



Regional and International Summary

8

Table 16 and Figure 14 provide some labour market comparisons on a seasonally adjusted basis between NI and other UK regions.

- **The unemployment rate in NI is lower than the UK average and is the fourth lowest of the twelve UK regions.**

The seasonally adjusted unemployment rate in NI at July - September 2010 (7.0%) was lower than the UK average (7.7%) and was the fourth lowest rate among the twelve UK regions. However, the working age NI employment rate (66.1%) was the lowest of all the UK regions and NI (28.8%) had the highest economic inactivity rate of any UK region. The region with the highest employment rate was the South East (75.2%).

- **The NI unemployment rate is 2.6 percentage points lower than the average rate for the EU 27.**

Figure 15 overleaf shows how the harmonised employment rate in NI compares to other employment rates in the European Union (based on those aged 15-64). The NI rate (65.0% - see Note 2 overleaf) is higher than the EU average (63.6%). It is also 4.6 percentage points above the current rate in the Republic of Ireland (60.4%).

The NI unemployment rate (7.0%) is 6.9 percentage points lower than the rate for the Republic of Ireland (13.9%) and 2.6 percentage points lower than the average rate for the EU 27 (9.6%).

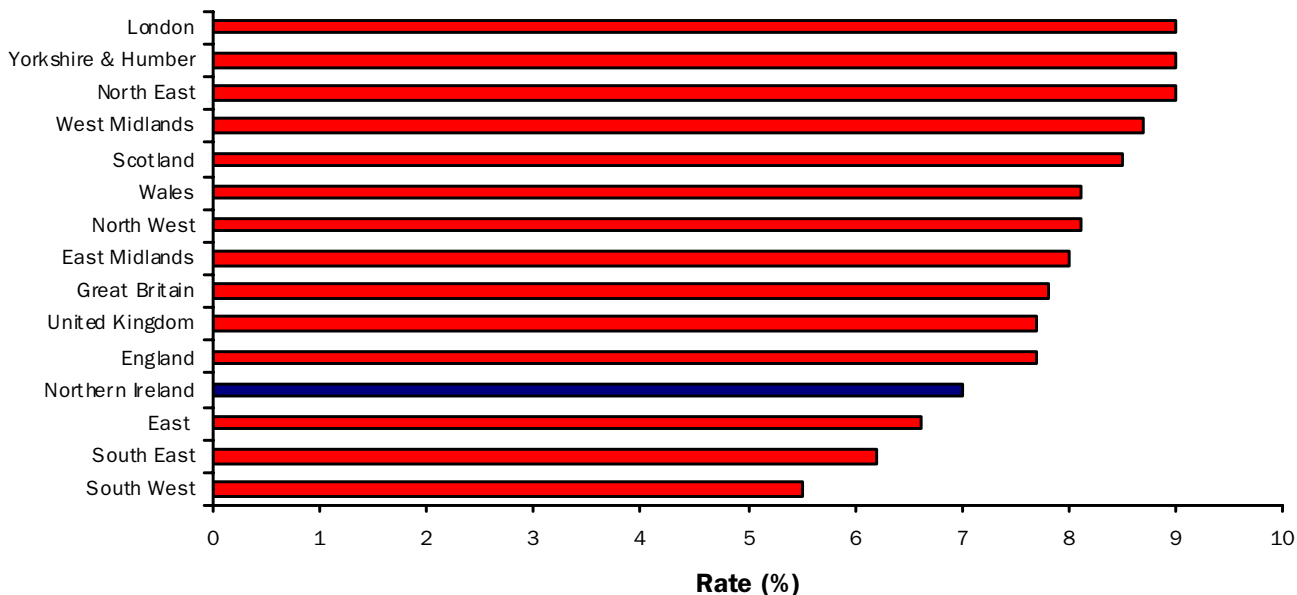
Regional Seasonally Adjusted Economic Activity Rates, July – September 2010

Table 16 Percentage

	Employment rate (16-64)	Unemployment rate	Economic Inactivity rate (16-64)
North East	68.1	9.0	25.0
North West	69.4	8.1	24.3
Yorkshire & Humber	68.4	9.0	24.7
East Midlands	70.8	8.0	22.9
West Midlands	69.4	8.7	23.9
East	73.9	6.6	20.7
London	68.7	9.0	24.5
South East	75.2	6.2	19.8
South West	74.5	5.5	21.1
England	71.2	7.7	22.8
Wales	67.1	8.1	26.7
Scotland	70.7	8.5	22.6
Great Britain	70.9	7.8	23.0
Northern Ireland	66.1	7.0	28.8
United Kingdom	70.8	7.7	23.2

Regional Seasonally Adjusted Unemployment Rates, July - September 2010

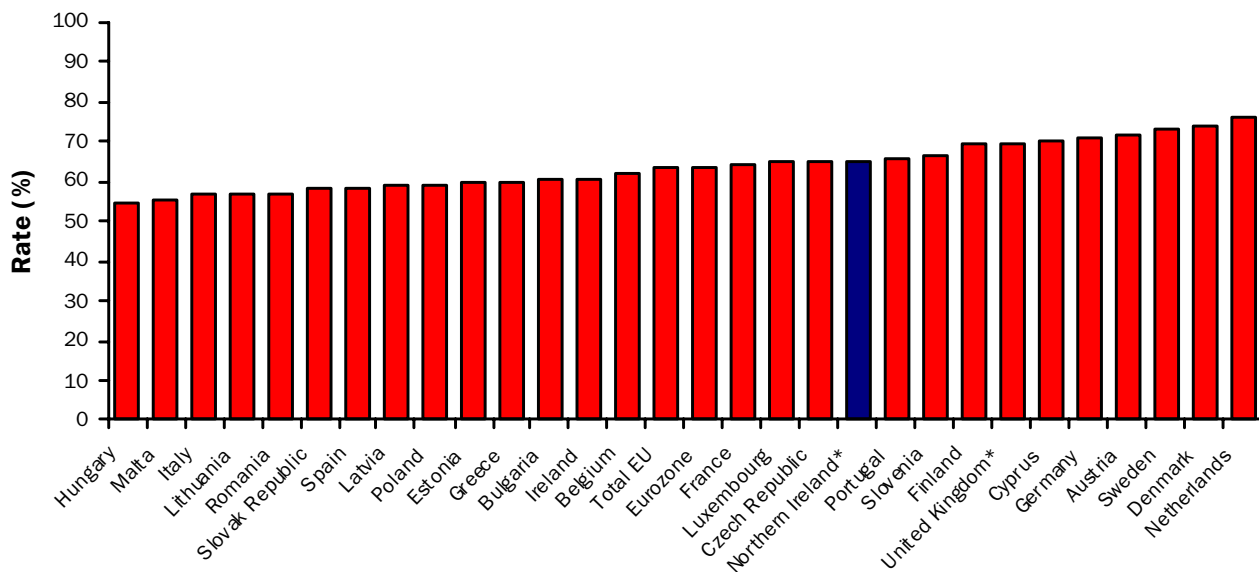
Figure 14



International Comparisons of ILO Employment

ILO Employment Rates (%) - Unadjusted¹

Figure 15



Source: Eurostat and StatBLS

¹ Employment rates are not seasonally adjusted.

The employment rates published by EUROSTAT are based on the population aged 15-64.

* A NI employment rate comparable to the EUROSTAT figures has been produced from the Calendar Quarter 2 LFS dataset. It is based on the population aged 15-64 and differs from the working age rates (16-64 for men and for women) published elsewhere in this publication, which take account of both the school-leaving and state pension age.

The employment rate for the UK as published by EUROSTAT will differ from the working age rate (16-64) published by ONS for the same reason. Eurostat compiles 'harmonised' unemployment rates for most countries (but not NI and UK) by extrapolating from the most recent LFS data using monthly registered unemployment data. For further information see the Monthly Eurostat news release.

The "Total EU" series consists of all 27 EU countries. The Eurozone series consists of the following EU countries: Austria, Belgium, Cyprus, Finland, France, Germany, Greece, Ireland, Italy, Luxembourg, Malta, Netherlands, Portugal, Slovak Republic, Slovenia and Spain.

Disability and the Labour Market

9

This section focuses on the characteristics and labour market experiences of people with disabilities. Disability as a concept is complex and can be defined in a number of ways and here it relates to current long-term disabilities among the working-age population that are covered by the 1995 Disability Discrimination Act and/or work-limiting disabilities – please refer to the Technical Notes section for a full definition.

Estimates of Numbers Disabled

- **One in five persons (19%) of working-age, in NI, has a disability.**

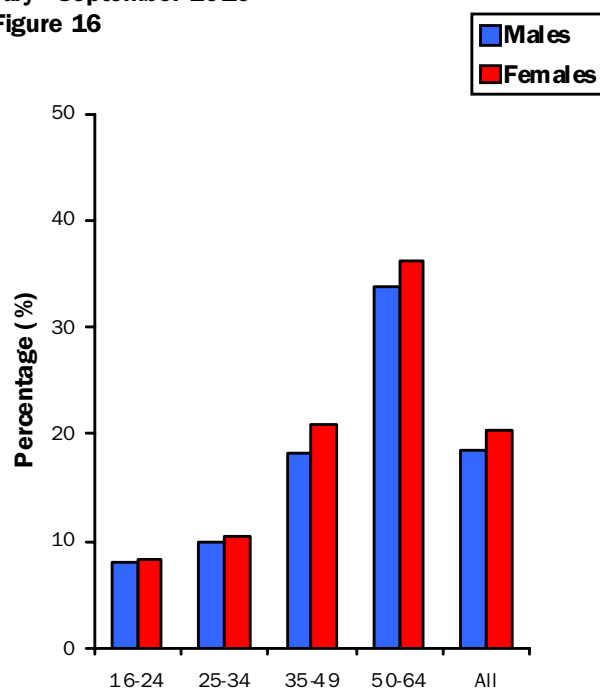
The July - September 2010 LFS estimates that one in five (19.4%) persons (223,000), aged 16-64 in NI, had a current long-term disability. This proportion was lower for males (18.4%) than for females (20.3%), equating to 105,000 disabled men and 118,000 disabled women.

- **The likelihood of having a disability or health problem increases with age for both males and females.**

Figure 16 shows that the proportion of persons who have a long-term disability or health problem increases with age for both males and females. The proportion of males with disabilities increased from 8.0% for the 16-24 age group to 33.8% for the 50-64 age group.

For females the proportion with disabilities increased from 8.4% for ages 16-24 to 36.1% for ages 50-64.

**Disability Rates By Age Group,
July - September 2010**
Figure 16



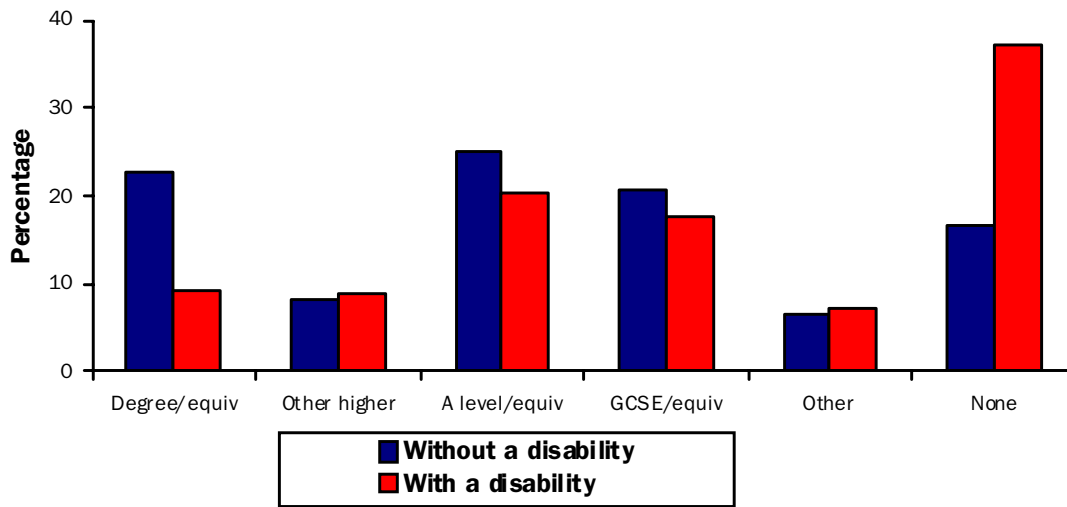
Qualifications of Persons With and Without Disabilities

- **Over twice the proportion of disabled persons have no qualification compared to non-disabled persons at July - September 2010.**

Figure 17 shows the qualification levels held by disabled and non-disabled persons at July - September 2010. Overall, persons with a disability are less qualified than those without. In particular, only 9.1% of those with a disability held a degree or equivalent qualification, compared with 22.7% of non-disabled persons. Just under two-fifths (37.1%) of those with a disability had no qualifications, over twice the proportion of those without a disability (16.6%).

Qualifications of Persons With or Without a Disability, July - September 2010

Figure 17



Economic Activity of the Disabled and Non-Disabled

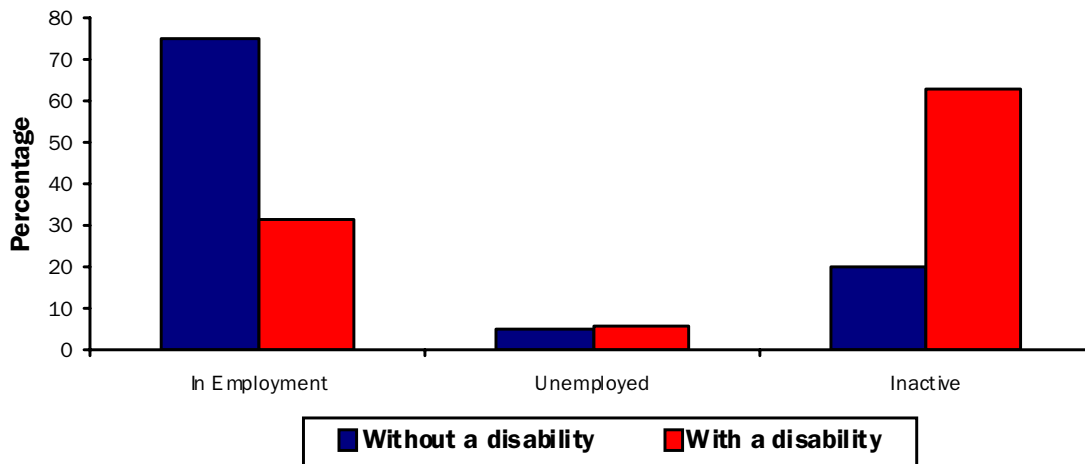
- **The employment rate for those without disabilities (75%) is over twice that of people with disabilities (32%).**

Please refer to Technical Notes for full definition of qualifications.
 Excludes those who did not state their highest level of qualification.
 Figures may not sum due to rounding.

Figure 18 shows the relative importance of the three main economic categories for those aged 16-64, with and without a disability, at July - September 2010. A much smaller proportion of those with a disability (31.7%) are in employment compared to those without (74.6%). Conversely, the majority of those with a disability (62.6%) are economically inactive, compared with 20.3% of those without a disability.

Economic Activity of Those With and Without a Disability, July - September 2010

Figure 18



Special Feature: Households

10

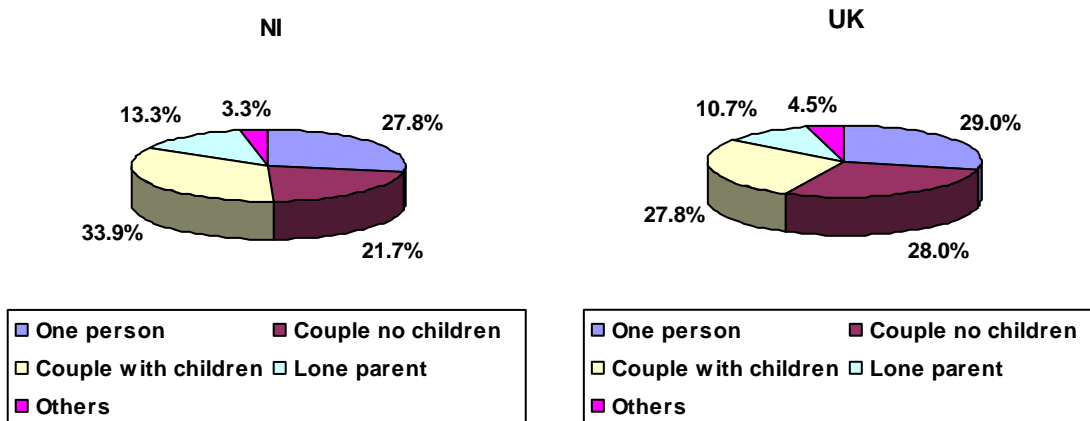
This feature looks specifically at household level data for the period April – June 2010. Datasets specifically designed for analyses at the household level are available from the Labour Force Survey (LFS).

- **NI had an average of 2.51 persons per private household compared to a UK average of 2.36 persons per household. London (2.58) was the region with the highest number of persons per household.**

At April - June 2010 there were 707,000 private households in Northern Ireland (NI). There were 1,775,000 persons living in these households, giving an average of 2.51 persons per household. This compared with a UK average of 2.36 as a whole. Indeed, NI (2.51) and London (2.58) were the regions with the highest number of persons per household.

Figure 19 looks at household types according to the relationships between the persons living in them, for both NI and the UK. The most common type of household in NI consisted of a couple with children, which accounted for 33.9% of all households. The other two main household types were one person households (27.8%), followed by couples with no children (21.7%).

Household Types, NI and UK, April - June 2010
Figure 19



“Others” comprise households with two or more people in all different family units, two or more family units and same sex couples.

- **Couples with children accounted for the largest proportion (33.9%) of NI households, while one person households (29.0%) were the most common for the UK as a whole.**

The main difference between the distribution of household types in NI and the UK is the lower proportion of households composed of couples with no children in NI (21.7% compared with 28.0% in the UK). This is balanced by a higher proportion of households in NI composed of couples with children than in the UK (33.9% compared with 27.8%).

- **Proportionally there were more lone parent households in NI than in the UK (13.3% compared with 10.7%).**

There were an estimated 94,000 lone parent households in NI. NI has a higher proportion of lone parent households than the UK (13.3% compared with 10.7%).

Table 17 shows the proportions of working age households according to the economic activity of their members. (A working age household is defined as a household with at least one person aged 16-64 in it.)

- **47% of all NI working age households are classified as workrich households where all persons are in employment.**

The most common type of household in NI was one where all persons were employed (referred to as a workrich household), accounting for 47% of all working age households. Note these households may contain only one person who is employed, or several persons, all of whom are employed. There is a 6 percentage point difference between the proportion of workrich working age households in NI and the UK. In fact, NI has the lowest proportion of working age households of all UK regions in this category.

The other two main categories of households were those containing employed and economically inactive persons (26%) and those where all persons were economically inactive (18%). Both of these proportions were higher than the equivalent figures for the UK as a whole.

A **workless household** is defined as a household where no one is in employment and comprises types 3, 5 and 6 from Table 17.

- **NI had the fourth highest proportion of working age workless households (22%) among the UK regions. This compared to 19% in the UK as a whole.**

In April - June 2010, there were 125,000 workless working age households, or 22% of all working age households in NI. This compared with 19% in the UK as a whole and was the fourth highest proportion among the UK regions (the North-East being the highest at 24%).

Working age Households by Combined Economic Activity, April - June 2010

Table 17

Type of Economic Activity	NI	UK
1. All Employed	47%	53%
2. Employed and Economically Inactive	26%	22%
3. All Economically Inactive	18%	15%
4. Employed and Unemployed	3%	4%
5. All Unemployed	2%	3%
6. Unemployed and Economically Inactive	2%	2%
7. Employed, Unemployed and Econ. Inactive	2%	2%
All households (100%) ¹	565,000	20,047,000

¹ Excludes cases where the combined household economic activity is not known.

* Too small for a reliable estimate.

Note that the proportions in these household categories are affected by the number of persons in a household. Consequently the fact that NI has a larger average number of persons per household and a smaller proportion of one person households than the UK, means that there is more likely to be a combination of economic activity states within households than all persons of one activity state.

Technical Notes

11

Background

Following the UK's accession to the European Community, the Labour Force Survey (LFS) was carried out for the first time in 1973, under the terms of an EC Regulation. The Statistical Office of the European Communities co-ordinates information from all the Labour Force Surveys carried out by member states in order to assist in such matters as the allocation of Social Fund resources.

From 1973 to 1983, the LFS was carried out biennially in both Northern Ireland (NI) and Great Britain. Following a change in the requirements of the EC Regulation, from 1984 an annual survey was conducted and results referred to the spring months of each year. In March 1992 the GB portion of the survey moved onto a quarterly cycle and in December 1994 a quarterly survey was introduced in (NI).

As part of an EU requirement, where all member states must have an LFS based on calendar quarters, the NI Labour Force Survey moved to a calendar quarter basis from May 2006 onwards.

The LFS was previously based on seasonal quarters where, for example, the March – May months covered the Spring quarter, June - August was Summer and so forth. This has changed to calendar quarters where microdata will be available for January – March (Q1), April – June (Q2), July – September (Q3) and October - December (Q4). Initially, a back series of calendar quarter micro datasets will be available for the years 1997, 1999, 2001 – 2004, for Q2 and Q4, then for all quarters from 2005 onwards. The Office for National Statistics (ONS) are responsible for producing these back series and currently aim to have all periods revised and available as soon as possible.

The LFS is a sample survey carried out by interviewing individuals about their personal circumstances and work. It is the biggest regular household survey in NI and provides a rich source of information on the labour force using internationally agreed concepts and definitions. This statistics notice presents supplementary results from the July - September 2010 Quarterly LFS in Northern Ireland.

The Department of Enterprise, Trade and Investment is responsible for ensuring that the survey is conducted in NI and for the analysis and interpretation of the results. However, the day-to-day management of the fieldwork, including data collection and database creation, rests with the Central Survey Unit (CSU) of the NI Statistics and Research Agency. CSU are also in charge of the creation of a Computer Assisted Interviewing questionnaire (designed to mirror that used in GB), the sampling of addresses and the carrying out of fieldwork using a team of specialist interviewers.

Response Rates

The sample for the July – September 2010 LFS consisted of 2,400 addresses, (650 chosen at random from the Valuation & Lands Agency list of domestic properties, 1,750 carried forward from the previous quarter). A random start, fixed interval sampling technique of the addresses, which are ordered by District Council and Ward, is used. This ensures a proportional representation across the District Council areas in NI.

Only private household addresses were eligible since the LFS is a survey of the private household population. Every selected address is interviewed on five successive occasions, such that in any one quarter, a fifth of the sample will be receiving their first interview, one fifth their second and so on, with one fifth receiving their fifth and final interview. This results in an 80% sample overlap between quarters.

Response Rates, July - September 2010

	Number/Percentage
Total addresses sampled	2,400*
Fully and partially responding	1,608
Eligible sample	2,120
Response rate (%)	75.8

*Of the addresses sampled, a small number contained more than one household and some contained households which moved during the quarter. Residents in NHS hospital accommodation (formerly called nurses' homes) and students living in halls of residence or boarding schools are included to improve the coverage of young people.

Breakdown of Non-response and Ineligible Addresses, July - September 2010

	Number
Non-response/non-contact:	
- Outright refusal	178
- Circumstantial refusal	60
- Non-contact	274
Ineligible addresses:	
- Vacant/derelict/under construction	213
- Holiday accommodation	20
- Non-residential	4
- Second residence	27
- Other ineligible	9
- Household moves	7
Total	792

Sampling

Because the LFS is a sample survey, results are subject to sampling error, i.e. the actual proportion of the population in private households with a particular characteristic may differ from the proportion of the LFS sample with that characteristic. Accordingly, although percentages in most tables are quoted to one decimal place, they should not be regarded as having this degree of accuracy, and indeed some apparent trends over time may be misleading due to sampling error. In general, the larger the group, the more precise (proportionately) is the LFS estimate.

The following table shows the proportions obtained from the July - September 2010 survey for some key LFS variables and indicates their sampling accuracy. The confidence intervals represent the ranges either side of the LFS proportions which are 95% certain to include the true values of the quantities estimated.

LFS Proportions Of Total Private Household Population (16+), Including 95% Confidence Intervals, July - September 2010

	LFS Estimate	Confidence Interval
Economically active	60	+/- 1.7
In Employment	56	+/- 1.7
Employees*	82	+/- 1.7
Self-employed*	16	+/- 1.7
Unemployed	4	+/- 0.7
Economically inactive (16+)	40	+/- 1.7
Unemployment rate	7.1	+/- 1.1

* As a percentage of all in employment.

Confidence intervals for other proportions produced in this publication may be obtained on request from addresses given at the end of this note.

Publication Threshold

It is the nature of sampling variability that the smaller the group whose size is being estimated, the (proportionately) less precise that estimate is. LFS estimates of under 8,000 are not published in this supplement as they are likely to be unreliable. This revised publication threshold came into effect from 1 September 1999 and estimates below this threshold contained in earlier publications should, therefore, be treated with caution.

Grossing To Population Totals

Most of the results presented in this report are expressed in terms of percentages, following the grossing of sample numbers to population levels. Each individual participating in the survey is given a weight or "grossing factor" which is related to that person's age and sex. In this way the final grossed results give the population total for NI and reflect the distributions by sex and age shown by the population figures.

Re-weighting of LFS data to updated population estimates

LFS data is revised periodically to incorporate the latest population estimates. The latest revisions were made in February 2010 to incorporate the latest population estimates. The revisions effect LFS data from the period June to August 2006 onwards.

The magnitude of the revisions are relatively small, with the revisions to the unemployment rate falling within +/-0.05 percentage points and the working age employment rate within +/- 0.1 percentage points. The procedures being applied to the NI LFS results are consistent with those applied by the Office for National Statistics to other UK regions

More information on the revision policy concerning labour market statistics can be found through the link below:
[Labour market statistics revisions policy](#)

Seasonal Adjustment

In conjunction with the Office for National Statistics (ONS) and consistent with all other UK regions, seasonally adjusted LFS estimates for the UK regions (including NI) have been reintroduced from Winter 2002/3. The seasonally adjusted estimates are quoted in Section 1 and Section 8 of this publication. Estimates in all other sections of this publication are not seasonally adjusted.

The seasonally adjusted data have been 'weighted' to the latest population figures and therefore provide a better indication of the current labour market status.

New definition of 'working age'

The 'working age' definition, used in the calculation of employment and economic inactivity rates, was changed in August 2010 to include those aged from 16 to 64 for both men and women. Previously these rates were based on upper age limits of 59 for women and 64 for men, reflecting the state pension ages in the UK. However, between 2010 and 2020, the state pension age for women is increasing (by one month every two months) from 60 to 65, thereby making a change to the definition necessary.

The change in definition followed a UK wide public consultation on the issue and the approach being applied to Northern Ireland labour market statistics mirrors the approach that the Office for National Statistics (ONS) are applying to other UK regions.

A consistent time series for the new headline rates has been produced and all future reference to working age rates will be based on the 16 to 64 definition. Please see link for further details http://www.detini.gov.uk/introduction_of_new_working_age_definition.pdf.

For a limited period, employment and economic inactivity rates based on the old working age definition (i.e. 16-59/64) will be available on the DETI website at <http://www.detini.gov.uk/deti-stats-index/stats-surveys.htm>.

Please note that there are no implications for the headline unemployment rate, which will continue to be based on the economically active population aged 16 and over.

Government Targets

Data from the Labour Force Survey (LFS) is used in the measurement of targets set in the Northern Ireland Executive's Programme for Government (PSA targets) See www.pfgbudgetni.gov.uk/finalpfg.pdf for further details. The LFS data feeds into productivity estimates for NI and are therefore indirectly used to measure progress towards PSA 1: Productivity growth. In addition, LFS data is used to measure the proportion of the working age population qualified to Skill levels 2 and 3. This data therefore feeds into the measurement of PSA 2: Skills for prosperity.

Details of progress towards these targets can be found at:
www.pfgbudgetni.gov.uk/pfg_delivery_report_q4_08_09-final_-_pdf_version-5.pdf

Notes to Tables

Within tables, where a number is in italics this denotes percentage, otherwise the data refers to the number (rounded to the nearest thousand).

Definitions

Working age

As of August 2010, this refers to ages 16 to 64 for both men and women.

In Employment

The LFS defines employment as those aged 16 and over who did at least one hour's paid work in the reference week (either as an employee or self-employed); those who had a job which they were temporarily away from (on holiday for example); those participating in government training and employment programmes; and those doing unpaid family work.

Employment Rate

The percentage of people aged 16 and over who are in employment.

Employees/Self-employed

The division between employees and self-employed is based on survey respondents' own assessment of their employment status.

Unpaid Family Workers

The separate identification of this group in the LFS is in accordance with international recommendations. It comprises persons doing unpaid work for a business they own or a business that a relative owns.

Full-time/Part-time

The classification of employees, self-employed, those on government work-related training programmes and unpaid workers in their main job as full-time or part-time is on the basis of self-assessment.

Full-time Education

In the LFS this includes those people over the age of 16 who state that they are still at school or in some other form of full-time education, including sandwich courses.

Unemployment

The International Labour Organisation (ILO) measure of unemployment refers to people without a job who were available to start work in the two weeks following their LFS interview and had either looked for work in the four weeks prior to interview or were waiting to start a job they had already obtained. This definition of unemployment is in accordance with that adopted by the 13th International Conference of Labour Statisticians, further clarified at the 14th ICLS, and promulgated by the ILO in 1987.

Unemployment Rate

The percentage of economically active people who are unemployed.

Duration of Unemployment

Duration of unemployment is defined as the shorter of the following two periods:

- (a) duration of active search for work; and
- (b) length of time since employment.

The short-term unemployed are those people who have been unemployed for less than 1 year, while the long-term unemployed are defined as those who have been unemployed for 1 year or more.

Educational Attainment Categories

Degree or higher = degree or degree equivalent and above incl. First degree, Postgraduate Diplomas and Professional qualifications.
Other higher below degree = other Higher Education below degree level incl. HND/HNC/BTEC (Higher), teaching and nursing qualifications.

A level or equivalent = incl. Trade Apprenticeships, vocational level 3

GCSE A-C or equivalent = incl. vocational level 2.
Other qualifications = incl. vocational level 1 and below.

Disabilities

Since Spring 1997, LFS working-age respondents have been asked questions to identify whether they have a current disability covered by the 1995 Disability Discrimination or a work-limiting disability (which affects either the kind or amount of paid work they can do) or both. This broad description covering any of these three definitions (defined as a current long-term disability) is used in this publication. This definition covers a wide range of impairments which themselves can differ greatly in severity.

Industry

The classification of respondents' industry of employment is based on the Standard Industrial Classification 2007: SIC(07)

Occupation

The classification of respondents' occupations are based on the Standard Occupational Classification (SOC), introduced in June 2000 which replaces SOC 90.

Further Information

Further information about the survey can be obtained by:

writing to:

Department of Enterprise,
Trade and Investment,
Statistics Research Branch,
Netherleigh, Massey Avenue,
Belfast BT4 2JP

telephoning: (028) 9052 9439

textphone: (028) 9052 9304

fax: (028) 9052 9459

e-mailing: hugh.mcnickle@detini.gov.uk

Publication now available on visiting web site:
www.statistics.detini.gov.uk