

NORTHERN IRELAND LABOUR FORCE SURVEY: HISTORICAL SUPPLEMENT SPRING 1984 – SPRING 2006

Published 18/07/07

This report provides a back series of some of the Labour Force Survey's key variables. It contains data spanning a period of over 20 years and examines trends over time and changes in the NI labour market structure. The figures show:

- **Between Spring 1984 and Spring 2006 the total number of people in employment is estimated to have increased by 198,000 to a figure of 749,000 in Spring 2006.**
- **The unemployment rate has fallen from 16.8% in Spring 1984 to 4.3% in Spring 2006.**
- **Between 1984 and 2006, the 16 plus economically inactive population (those neither in employment nor unemployed) rose by 79,000 to a figure of 538,000. The number of economically inactive of working age also rose by 33,000 during the same period.**
- **The number of working age people that were economically inactive due to sickness or disability more than doubled from 49,000 in 1992 to 99,000 in 2006.**
- **The working age employment rate has increased from 58.9% in Spring 1984 to 68.8% in Spring 2006.**
- **Further information on qualifications and training, age distributions and industry and occupation breakdowns are contained in this report.**

A NATIONAL STATISTICS PUBLICATION

National Statistics are produced to high professional standards set out in the National Statistics Code of Practice. They undergo regular quality assurance reviews to ensure that they meet customer needs. They are produced free from any political interference.

For general enquiries about National Statistics, contact
The National Statistics Public Enquiry Service on 0845 601 3034
minicom: 01633 812399
E-mail: info@statistics.gov.uk
Fax: 01633 652747
Letters: Room 1015, Government Buildings, Cardiff Road, Newport,
Gwent, South Wales NP10 8XG

You can also find National Statistics on the Internet – go to
www.statistics.gov.uk

Contents

Executive Summary

Table 1 (a) Economic Activity All Persons Spring 1995 - Spring 2006 Seasonally Adjusted

Table 1 (b) Economic Activity Males Spring 1995 - Spring 2006 Seasonally Adjusted

Table 1 (c) Economic Activity Females Spring 1995 - Spring 2006 Seasonally Adjusted

Table 2 (a) Economic Activity All Persons Spring 1984 – Spring 2006

Table 2 (b) Economic Activity Males Spring 1984 – Spring 2006

Table 2 (c) Economic Activity Females Spring 1984 - Spring 2006

Table 3 Reason for Economic Inactivity By Gender Spring 1992 – Spring 2006

Table 4 Employees In Full and Part Time Employment Spring 1984 – Spring 2006

Table 5 Job Related Training Spring 1984 - Spring 2006

Table 6 (a) Self – Employment by Industry (SIC) 03 All Persons Spring 1994 – Spring 2006

Table 6 (b) Self – Employment by Industry Males Spring 1994 – Spring 2006

Table 7 Qualification Levels by Gender of NI Working Age Population Spring 1994 – Spring 2006

Table 8 Qualification Levels by Gender of Those in Employment Spring 1994 - Spring 2006

Table 9 (a) Age Distribution of All Persons in Employment Spring 1984 – Spring 2006

Table 9 (b) Age Distribution of Males in Employment Spring 1984 – Spring 2006

Table 9 (c) Age Distribution of Females In Employment Spring 1984 – Spring 2006

Table 10 (a) All Persons Employment By Industry (SIC 03) Spring 1994 - Spring 2006

Table 10 (b) Male Employment by Industry (SIC 03) Spring 1994 - Spring 2006

Table 10 (c) Female Employment by Industry (SIC 03) Spring 1994 - Spring 2006

Table 11 (a – c) Employment by Occupation Spring 1991 – Spring 2000

Table 12 Employment By Occupation and Gender (SOC 2000) Spring 2001 - Spring 2006

Table 13 Duration of Unemployment Spring 1986 - Spring 2006

Table 14 Age Distribution of the Unemployed Spring 1984 - Spring 2006

Technical Notes

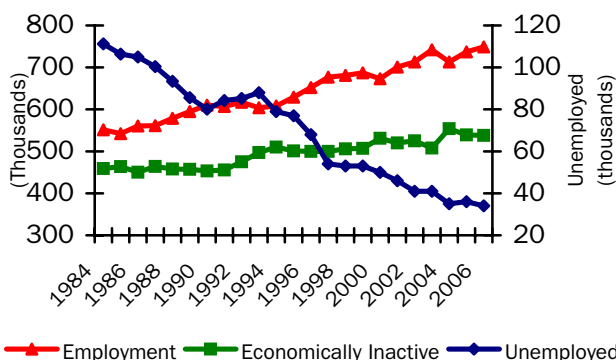
Executive Summary

1

Introduction

The Labour Force Survey (LFS) is a sample survey carried out by interviewing individuals in private households about their personal circumstances and work. It is the biggest regular household survey in Northern Ireland (NI) and provides a rich source of information on the labour force using internationally agreed concepts and definitions. This publication contains historical LFS estimates and examines trends over time and changes in the NI labour market structure.

**Labour Market
Summary of Northern Ireland
Figure 1**



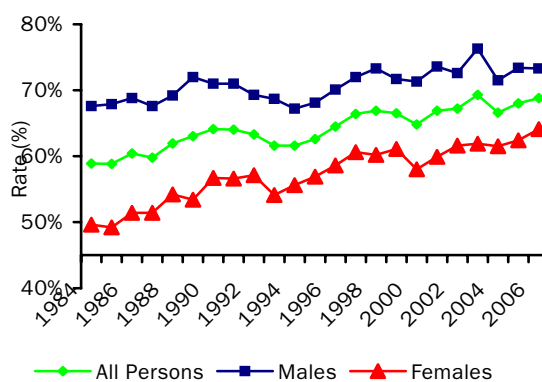
Employment

During the last twenty years there has been a steady increase in the number of people in employment in Northern Ireland (see Figure 1). In Spring 2006, there were an estimated 749,000 persons in employment and this represents an increase of 198,000 (+36%) from the estimate for Spring 1984 (551,000). During the same period the number of females in employment increased by 116,000 (+51%), whereas male employment increased by 82,000 (+25%).

Employees (+150,000 persons) accounted for the majority of the increase in employment levels between Spring 1984 and 2006, with the number of part-time employees (+65%) increasing proportionately more than the number of full-time employees (+25%).

There has also been a large increase in self-employment in NI, with the numbers increasing by 56% from 78,000 in 1984 to 122,000 in 2006.

**Working Age Employment Rates
Figure 2**



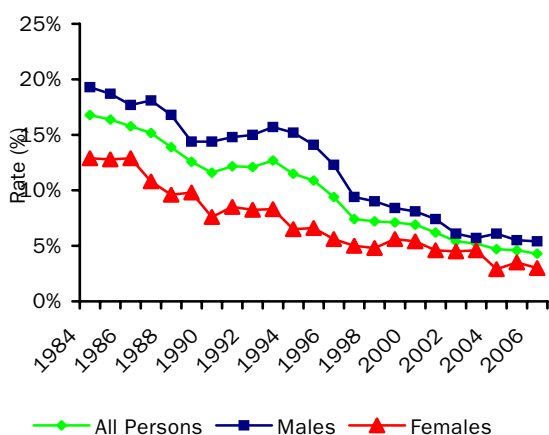
The increase in employment levels during the last two decades has been reflected in corresponding increases in the working age employment rate (see Figure 2). The overall employment rate in Spring 2006 (68.8%) was nearly ten percentage points higher than the rate in Spring 1984 (58.9%), with the increase in the female rate (+14.5 percentage points) being over double that recorded for males (+5.7 percentage points). The gap in male and female working age employment rates has therefore halved from 18 percentage points in Spring 1984 to 9.2 percentage points in Spring 2006.

Unemployment

Unemployment in NI has fallen dramatically over the last twenty years, with the number of unemployed persons in 2006 (34,000) now less than a third of the figure for 1984 (111,000). Figure 3 shows the effect this has had on the unemployment rate for males and females, with the male rate falling from 19.3% in 1984 to 5.4% in 2006 and the female rate falling from 12.9% to 3.0%. There is now only a 2.5 percentage points difference in the male and female rates, compared to a difference of

over six percentage points in 1984. The proportion of unemployed people classified as long-term unemployed has also fallen steadily over the last two decades. Whereas 65.1% of the unemployed were 'long-term' in Spring 1985, the figure has fallen to 37.5% in Spring 2006.

Unemployment Rates
Figure 3

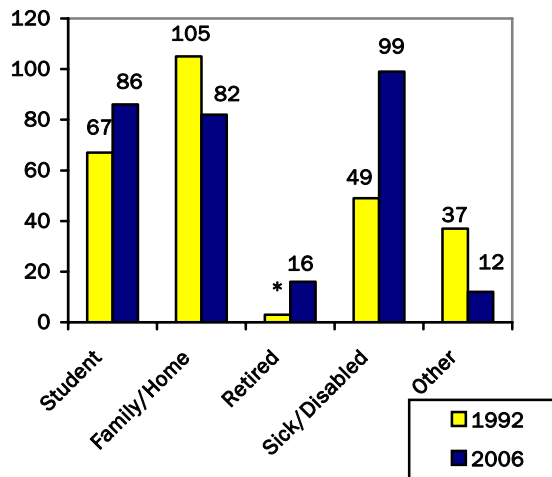


Economic Inactivity

Between Spring 1984 and Spring 2006 the number of persons aged 16 and over who were economically inactive increased by 79,000, with the number of males increasing by 72,000 and females by 7,000. While some of this increase can be explained by the ageing of the population and a rise in the number of retired persons, there was also an increase of 33,000 in the number of economically inactive of working age. This increase consisted entirely of a rise in the number of inactive males of working age (+47,000), as the number of inactive females of working age fell by 14,000.

Figure 4 shows a breakdown of the economically inactive population by reason for Spring 1992 and Spring 2006 (1992 is the earliest year for which this analysis is available on a consistent basis). It shows that the major increase has occurred in the sick/disabled category, with the numbers doubling from 49,000 in 1992 to 99,000 in 2006. In contrast there were decreases in the number inactive due to family/home commitments (-22,000) and in the number that gave 'other' reasons (-25,000).

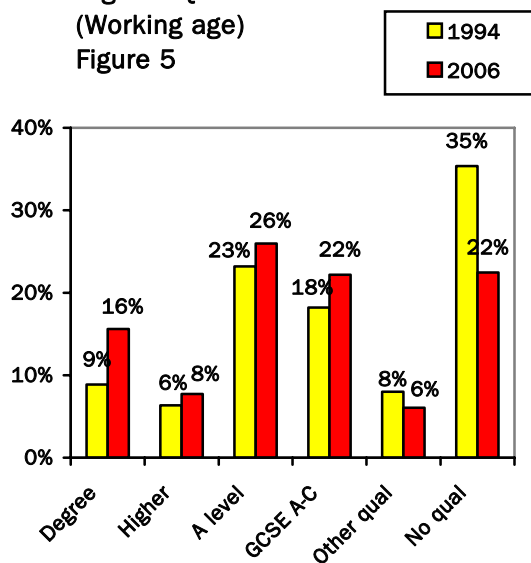
Reason for Economic Inactivity
(Working age)
Figure 4



Qualification levels

LFS results show that during the period 1994 – 2006 there has been an increase in the qualification levels of the working age population in NI (see Figure 5). While 35% of the population had no qualifications in Spring 1994, this figure has fallen to 22% in Spring 2006. Conversely 16% of the population held a degree or equivalent in 2006, compared to only 9% in 1994.

Highest Qualification Level
(Working age)
Figure 5



**TABLE 1a: ECONOMIC ACTIVITY; Spring 1995 - Spring 2006 SEASONALLY ADJUSTED
ALL PERSONS**

(Thousands)

	Spring 1995	Spring 1996	Spring 1997	Spring 1998	Spring 1999	Spring 2000	Spring 2001	Spring 2002	Spring 2003	Spring 2004	Spring 2005	Spring 2006
In Employment¹	630	654	680	686	692	678	705	716	745	717	744	760
ILO Unemployed	80	71	58	56	55	52	47	42	43	37	37	36
Total Economically Active	710	725	738	741	748	730	752	758	788	754	781	795
Economically Inactive	496	494	493	499	499	525	515	520	502	548	534	534
All Persons Aged 16+	1,206	1,219	1,231	1,240	1,247	1,255	1,267	1,279	1,290	1,301	1,315	1,329
Economic Activity Rate (16+)	58.8%	59.5%	60.0%	59.8%	60.0%	58.2%	59.4%	59.3%	61.1%	57.9%	59.4%	59.8%
ILO Unemployment Rate	11.2%	9.8%	7.8%	7.5%	7.4%	7.1%	6.3%	5.6%	5.4%	4.9%	4.8%	4.5%
Working Age (male 16-64, female 16-59)												
ALL	968	979	989	997	1,002	1,009	1,018	1,026	1,034	1,041	1,050	1,060
In Employment	607	633	659	670	671	658	685	693	720	698	720	735
ILO Unemployed	79	71	57	55	55	52	47	42	43	37	37	36
Economically Active	687	703	717	726	726	709	732	735	762	735	757	771
Working Age Economic Activity Rate	70.9%	71.9%	72.5%	72.8%	72.4%	70.3%	71.9%	71.6%	73.7%	70.6%	72.1%	72.7%
Working Age Employment Rate	62.7%	64.6%	66.7%	67.3%	66.9%	65.2%	67.3%	67.5%	69.6%	67.0%	68.6%	69.4%

See technical note for definitions and comments.

¹includes unpaid family workers

**TABLE 1b: ECONOMIC ACTIVITY; Spring 1995 - Spring 2006 SEASONALLY ADJUSTED
MALES**

(Thousands)

	Spring 1995	Spring 1996	Spring 1997	Spring 1998	Spring 1999	Spring 2000	Spring 2001	Spring 2002	Spring 2003	Spring 2004	Spring 2005	Spring 2006
In Employment¹	350	363	376	384	380	381	394	394	417	392	409	413
ILO Unemployed	57	51	39	38	35	33	31	26	26	27	25	25
Total Economically Active	407	414	415	422	415	414	426	420	444	419	433	438
Economically Inactive	171	170	175	172	183	188	183	195	178	208	201	204
All Persons Aged 16+	578	584	590	594	598	602	608	615	621	627	634	642
Economic Activity Rate (16+)	70.5%	70.9%	70.4%	71.0%	69.5%	68.8%	70.0%	68.4%	71.4%	66.8%	68.3%	68.2%
ILO Unemployment Rate	14.1%	12.3%	9.4%	9.0%	8.4%	8.0%	7.3%	6.3%	5.9%	6.4%	5.8%	5.7%
Working Age (male 16-64, female 16-59)												
ALL	495	501	506	510	512	515	520	525	530	534	539	545
In Employment	339	353	367	376	370	370	386	384	407	385	400	404
ILO Unemployed	57	51	39	38	35	33	31	26	26	27	25	25
Economically Active	396	404	405	414	404	403	417	410	433	412	425	428
Working Age Economic Activity Rate	80.0%	80.7%	80.1%	81.2%	79.0%	78.2%	80.1%	78.1%	81.8%	77.2%	78.8%	78.5%
Working Age Employment Rate	68.5%	70.6%	72.5%	73.8%	72.2%	71.8%	74.1%	73.0%	76.8%	72.1%	74.2%	74.0%

See technical note for definitions and comments.

¹includes unpaid family workers

**TABLE 1c: ECONOMIC ACTIVITY; Spring 1995 - Spring 2006 SEASONALLY ADJUSTED
FEMALES**

(Thousands)

	Spring 1995	Spring 1996	Spring 1997	Spring 1998	Spring 1999	Spring 2000	Spring 2001	Spring 2002	Spring 2003	Spring 2004	Spring 2005	Spring 2006
In Employment¹	280	291	304	301	312	298	311	322	328	325	335	347
ILO Unemployed	22	20	19	18	20	19	16	16	16	10	13	11
Total Economically Active	303	311	323	319	333	316	327	338	344	335	348	357
Economically Inactive	326	324	318	326	317	337	332	325	325	339	333	330
All Persons Aged 16+	629	635	641	645	649	653	659	663	669	674	680	687
Economic Activity Rate (16+)	48.2%	48.9%	50.4%	49.4%	51.2%	48.4%	49.6%	50.9%	51.5%	49.7%	51.1%	52.0%
ILO Unemployment Rate	7.4%	6.4%	5.8%	5.5%	6.2%	5.9%	4.9%	4.7%	4.8%	3.0%	3.6%	3.1%
Working Age (male 16-64, female 16-59)												
ALL	473	478	483	487	490	494	498	501	504	507	511	515
In Employment	268	279	293	294	301	288	300	309	313	313	320	332
ILO Unemployed	22	20	19	18	20	19	16	15	16	10	12	11
Economically Active	290	299	311	312	321	307	316	325	329	323	332	343
Working Age Economic Activity Rate	61.4%	62.6%	64.5%	64.0%	65.6%	62.1%	63.4%	64.8%	65.2%	63.6%	65.1%	66.5%
Working Age Employment Rate	56.7%	58.4%	60.6%	60.4%	61.4%	58.4%	60.2%	61.7%	62.0%	61.7%	62.6%	64.4%

See technical note for definitions and comments.

¹includes unpaid family workers

TABLE 2a: ECONOMIC ACTIVITY; Spring 1984 - Spring 2006
ALL PERSONS

(Thousands)

	Spring 1984	Spring 1985	Spring 1986	Spring 1987	Spring 1988	Spring 1989	Spring 1990	Spring 1991	Spring 1992	Spring 1993	Spring 1994
Employees	466	465	478	461	481	488	498	496	497	490	488
Self-Employed	78	68	72	89	82	87	89	86	93	85	93
Government Schemes	7	9	10	11	16	20	23	25	22	24	21
In Employment¹	551	542	560	561	579	595	610	607	617	604	608
Unemployed	111	106	105	100	93	86	80	84	85	88	79
Total Economically Active	663	649	665	662	672	680	690	691	702	692	688
Economically Inactive	459	464	450	464	458	457	453	455	475	497	510
All Persons Aged 16+	1,122	1,112	1,116	1,125	1,130	1,138	1,143	1,147	1,176	1,189	1,198
Under 16	431	426	426	423	423	421	420	419	417	418	418
Total Population	1,552	1,538	1,541	1,549	1,553	1,558	1,563	1,566	1,593	1,607	1,616
Economic Activity Rate (16+)	59.1%	58.3%	59.6%	58.8%	59.5%	59.8%	60.4%	60.3%	59.7%	58.2%	57.4%
Unemployment Rate	16.8%	16.4%	15.8%	15.2%	13.9%	12.6%	11.6%	12.2%	12.1%	12.7%	11.5%
Working Age (male 16-64, female 16-59)											
ALL	904	896	899	907	911	917	921	925	942	953	961
In Employment	532	527	543	542	564	578	591	592	596	587	592
Unemployed	109	105	104	100	93	85	80	83	84	87	79
Economically Active	642	632	647	642	657	663	670	676	681	674	671
Working Age Economic Activity Rate	71.0%	70.6%	72.0%	70.8%	72.1%	72.3%	72.8%	73.1%	72.3%	70.7%	69.8%
Working Age Employment Rate	58.9%	58.8%	60.4%	59.8%	61.9%	63.0%	64.1%	64.0%	63.3%	61.6%	61.6%

See technical note for definitions and comments.

¹includes unpaid family workers.

* sample size too small for a reliable estimate.

TABLE 2a: ECONOMIC ACTIVITY; Spring 1984 - Spring 2006
ALL PERSONS

(Thousands)

	Spring 1995	Spring 1996	Spring 1997	Spring 1998	Spring 1999	Spring 2000	Spring 2001	Spring 2002	Spring 2003	Spring 2004	Spring 2005	Spring 2006
Employees	503	528	543	561	575	559	585	604	621	588	604	616
Self-Employed	102	96	105	98	94	99	98	99	106	110	119	122
Government Schemes	17	24	22	18	13	10	15	*	12	10	10	9
In Employment¹	629	652	677	681	687	673	701	713	742	713	737	749
Unemployed	77	68	54	53	53	50	46	41	41	35	36	34
Total Economically Active	706	719	731	733	740	723	747	753	783	748	772	783
Economically Inactive	501	500	500	506	507	531	520	525	508	554	539	538
All Persons Aged 16+	1,206	1,219	1,231	1,240	1,247	1,255	1,267	1,279	1,290	1,301	1,312	1,322
Under 16	416	415	413	411	408	404	398	394	389	383	378	373
Total Population	1,623	1,634	1,644	1,651	1,655	1,659	1,665	1,672	1,679	1,685	1,690	1,695
Economic Activity Rate (16+)	58.5%	59.0%	59.4%	59.2%	59.3%	57.6%	58.9%	58.9%	60.7%	57.5%	58.9%	59.3%
Unemployment Rate	10.9%	9.4%	7.4%	7.2%	7.1%	6.9%	6.2%	5.4%	5.2%	4.7%	4.6%	4.3%
Working Age (male 16-64, female 16-59)												
ALL	968	979	989	997	1,002	1,009	1,018	1,026	1,034	1,041	1,048	1,054
In Employment	606	631	657	666	666	653	681	690	716	694	713	725
Unemployed	77	68	54	53	53	50	46	40	41	35	36	34
Economically Active	683	699	711	719	719	704	727	730	757	729	749	759
Working Age Economic Activity Rate	70.6%	71.4%	71.9%	72.2%	71.8%	69.7%	71.4%	71.1%	73.2%	70.0%	71.4%	72.0%
Working Age Employment Rate	62.6%	64.5%	66.4%	66.9%	66.5%	64.8%	66.9%	67.2%	69.3%	66.6%	68.0%	68.8%

See technical note for definitions and comments.

¹includes unpaid family workers.

* sample size too small for a reliable estimate

TABLE 2b: ECONOMIC ACTIVITY; Spring 1984 - Spring 2006
Males

(Thousands)

	Spring 1984	Spring 1985	Spring 1986	Spring 1987	Spring 1988	Spring 1989	Spring 1990	Spring 1991	Spring 1992	Spring 1993	Spring 1994
Employees	251	258	258	244	253	261	259	261	252	253	245
Self-Employed	68	57	62	75	69	74	74	70	77	74	79
Government Schemes	*	7	7	*	10	13	14	15	12	14	13
In Employment¹	324	321	327	324	332	348	346	346	343	343	339
Unemployed	77	74	70	72	67	59	58	60	60	64	61
Total Economically Active	401	395	397	396	399	407	405	406	403	407	400
Economically Inactive	136	139	138	144	144	140	146	147	160	163	174
All Persons Aged 16+	537	534	536	541	544	547	550	553	563	570	574
Under 16	220	218	218	217	216	215	215	215	213	214	213
Total Population	757	752	753	758	760	763	765	767	776	783	788
Economic Activity Rate (16+)	74.6%	73.9%	74.2%	73.3%	73.5%	74.4%	73.5%	73.5%	71.6%	71.5%	69.7%
Unemployment Rate	19.3%	18.7%	17.7%	18.1%	16.8%	14.4%	14.4%	14.8%	15.0%	15.7%	15.2%
Working Age (male 16-64, female 16-59)											
ALL	466	463	464	468	471	474	476	479	483	489	493
In Employment	315	314	320	317	326	341	338	340	335	336	331
Unemployed	77	73	70	71	67	59	58	60	60	64	61
Economically Active	392	387	389	388	393	400	396	399	395	399	392
Working Age Economic Activity Rate	84.0%	83.7%	83.9%	82.9%	83.4%	84.4%	83.2%	83.4%	81.8%	81.7%	79.5%
Working Age Employment Rate	67.6%	67.9%	68.8%	67.6%	69.2%	72.0%	71.0%	71.0%	69.3%	68.7%	67.2%

See technical note for definitions and comments.

¹includes unpaid family workers.

* sample size too small for a reliable estimate.

TABLE 2b: ECONOMIC ACTIVITY; Spring 1984 - Spring 2006

Males

(Thousands)

	Spring 1995	Spring 1996	Spring 1997	Spring 1998	Spring 1999	Spring 2000	Spring 2001	Spring 2002	Spring 2003	Spring 2004	Spring 2005	Spring 2006
Employees	250	264	272	285	291	288	299	304	318	290	297	299
Self-Employed	84	82	85	83	77	82	81	82	89	90	99	99
Government Schemes	11	14	15	13	*	*	11	*	*	*	*	*
In Employment*	347	360	373	381	377	377	391	392	415	389	403	406
Unemployed	57	50	39	38	35	33	31	25	25	25	23	23
Total Economically Active	405	411	412	418	411	411	423	417	440	414	427	429
Economically Inactive	173	173	178	176	186	191	186	198	182	213	206	208
All Persons Aged 16+	578	584	590	594	598	602	608	615	621	627	632	637
Under 16	213	212	211	211	209	207	204	202	199	196	194	191
Total Population	791	796	801	805	807	809	813	817	821	823	826	829
Economic Activity Rate (16+)	70.0%	70.4%	69.8%	70.4%	68.8%	68.2%	69.5%	67.8%	70.8%	66.1%	67.5%	67.3%
Unemployment Rate	14.1%	12.3%	9.4%	9.0%	8.4%	8.1%	7.4%	6.1%	5.7%	6.1%	5.5%	5.4%
Working Age (male 16-64, female 16-59)												
ALL	495	501	506	510	512	515	520	525	530	534	538	541
In Employment	337	351	364	373	367	367	383	381	404	382	395	397
Unemployed	57	50	38	38	35	33	31	25	25	25	23	23
Economically Active	394	402	403	411	401	400	414	407	429	407	418	420
Working Age Economic Activity Rate	79.6%	80.2%	79.6%	80.6%	78.4%	77.7%	79.6%	77.5%	81.0%	76.2%	77.8%	77.5%
Working Age Employment Rate	68.1%	70.1%	72.0%	73.3%	71.7%	71.3%	73.6%	72.6%	76.3%	71.5%	73.4%	73.3%

See technical note for definitions and comments.

¹includes unpaid family workers.

* sample size too small for a reliable estimate.

TABLE 2c: ECONOMIC ACTIVITY; Spring 1984 - Spring 2006

Females

(Thousands)

	Spring 1984	Spring 1985	Spring 1986	Spring 1987	Spring 1988	Spring 1989	Spring 1990	Spring 1991	Spring 1992	Spring 1993	Spring 1994
Employees	215	207	220	218	228	227	239	236	245	237	244
Self-Employed	11	12	10	14	13	13	16	15	16	11	14
Government Schemes	*	*	*	*	*	7	10	10	9	10	*
In Employment¹	228	222	233	237	247	246	264	261	274	261	269
Unemployed	34	32	35	29	26	27	22	24	25	24	19
Total Economically Active	262	254	268	265	273	273	285	285	299	285	288
Economically Inactive	323	325	312	319	314	317	308	309	315	334	336
All Persons Aged 16+	585	578	580	585	587	590	593	594	613	619	624
Under 16	210	208	208	206	206	205	205	204	204	204	204
Total Population	795	786	788	791	793	796	798	798	817	823	828
Economic Activity Rate (16+)	44.8%	43.9%	46.2%	45.4%	46.5%	46.3%	48.1%	48.0%	48.7%	46.0%	46.1%
Unemployment Rate	12.9%	12.8%	12.9%	10.8%	9.6%	9.8%	7.6%	8.5%	8.2%	8.3%	6.5%
Working Age (male 16-64, female 16-59)											
ALL	438	433	435	438	440	443	445	446	459	464	468
In Employment	217	213	224	225	238	237	252	252	262	251	261
Unemployed	33	32	34	28	26	27	22	24	24	23	19
Economically Active	250	245	258	254	264	263	274	276	286	274	279
Working Age Economic Activity Rate	57.1%	56.5%	59.3%	57.9%	60.1%	59.4%	61.6%	61.9%	62.3%	59.1%	59.6%
Working Age Employment Rate	49.6%	49.2%	51.4%	51.4%	54.2%	53.4%	56.7%	56.6%	57.1%	54.1%	55.6%

See technical note for definitions and comments.

¹includes unpaid family workers.

* sample size too small for a reliable estimate.

TABLE 2c: ECONOMIC ACTIVITY; Spring 1984 - Spring 2006

Females

(Thousands)

	Spring 1995	Spring 1996	Spring 1997	Spring 1998	Spring 1999	Spring 2000	Spring 2001	Spring 2002	Spring 2003	Spring 2004	Spring 2005	Spring 2006
Employees	254	264	271	275	284	271	286	300	304	298	307	317
Self-Employed	18	15	19	15	17	17	17	17	18	21	20	23
Government Schemes	*	10	*	*	*	*	*	*	*	*	*	*
In Employment¹	281	291	304	300	310	296	310	321	327	324	333	344
Unemployed	20	17	16	15	18	17	15	15	16	10	12	10
Total Economically Active	301	308	319	315	329	313	324	336	343	334	345	354
Economically Inactive	327	326	321	330	321	340	334	327	326	341	334	330
All Persons Aged 16+	629	635	641	645	649	653	659	663	669	674	679	684
Under 16	204	203	202	201	199	197	194	192	189	187	185	182
Total Population	832	838	843	846	848	850	852	855	858	861	864	867
Economic Activity Rate (16+)	47.9%	48.6%	49.9%	48.8%	50.6%	47.9%	49.2%	50.7%	51.3%	49.5%	50.9%	51.7%
Unemployment Rate	6.6%	5.6%	5.0%	4.8%	5.6%	5.4%	4.6%	4.5%	4.6%	2.9%	3.5%	3.0%
Working Age (male 16-64, female 16-59)												
ALL	473	478	483	487	490	494	498	501	504	507	510	513
In Employment	269	280	293	293	299	286	298	308	312	312	318	329
Unemployed	20	17	16	15	18	17	15	15	16	10	12	10
Economically Active	289	297	308	308	318	303	313	323	328	322	331	339
Working Age Economic Activity Rate	61.2%	62.2%	63.8%	63.3%	64.8%	61.5%	62.9%	64.5%	65.0%	63.4%	64.8%	66.1%
Working Age Employment Rate	56.9%	58.6%	60.6%	60.2%	61.1%	58.0%	59.9%	61.6%	61.9%	61.5%	62.4%	64.1%

See technical note for definitions and comments.

¹includes unpaid family workers.

* sample size too small for a reliable estimate.

TABLE 3: REASON FOR ECONOMIC INACTIVITY BY GENDER, WORKING AGE POPULATION¹; Spring 1992 - Spring 2006

ALL PERSONS

Reason for Economic Inactivity	Spring 1992	Spring 1993	Spring 1994	Spring 1995	Spring 1996	Spring 1997	Spring 1998	Spring 1999	Spring 2000	Spring 2001	Spring 2002	Spring 2003	Spring 2004	Spring 2005	Spring 2006
Student	67	72	77	73	69	74	65	71	79	73	82	70	84	84	86
Family/home responsibilities	105	107	111	102	91	88	94	88	99	92	91	83	85	87	82
Sick or disabled ²	49	64	72	78	92	91	95	94	99	99	99	95	115	101	99
Retired	*	*	*	*	8	*	12	11	12	11	10	14	14	14	16
Other ³	37	29	23	25	20	19	11	18	17	15	14	16	15	13	12
Total Economically Inactive	261	279	290	285	280	278	277	283	305	291	296	277	312	299	295

MALES

Reason for Economic Inactivity	Spring 1992	Spring 1993	Spring 1994	Spring 1995	Spring 1996	Spring 1997	Spring 1998	Spring 1999	Spring 2000	Spring 2001	Spring 2002	Spring 2003	Spring 2004	Spring 2005	Spring 2006
Student	33	33	37	33	33	37	26	33	35	29	40	30	42	41	40
Family/home responsibilities	*	*	*	*	*	*	*	8	8	*	*	*	*	*	*
Sick or disabled ²	25	35	41	42	49	49	54	53	54	55	55	49	62	54	54
Retired	*	*	*	*	*	*	*	*	10	*	9	9	10	10	14
Other ³	25	13	12	15	9	*	*	9	*	*	*	*	*	*	*
Total Economically Inactive	88	89	101	101	99	103	99	111	115	106	118	101	127	120	122

FEMALES

Reason for Economic Inactivity	Spring 1992	Spring 1993	Spring 1994	Spring 1995	Spring 1996	Spring 1997	Spring 1998	Spring 1999	Spring 2000	Spring 2001	Spring 2002	Spring 2003	Spring 2004	Spring 2005	Spring 2006
Student	34	39	39	40	35	36	40	38	44	45	42	40	42	43	45
Family/home responsibilities	102	104	107	95	88	83	88	80	91	85	84	77	78	81	75
Sick or disabled ²	25	29	31	36	44	42	41	41	45	44	44	45	52	46	45
Retired	*	*	*	*	*	*	*	*	*	*	*	*	*	*	*
Other ³	11	16	10	10	11	11	*	9	9	8	*	9	9	*	*
Total Economically Inactive	173	190	189	184	181	175	179	172	190	185	178	176	186	180	174

¹ Working age equals 16-59 for females and 16-64 for males.

² Includes those that are both long-term sick/disabled or temporarily sick/injured.

³ Includes discouraged workers and those that did not give a reason.

* Sample size too small for a reliable estimate.

TABLE 4: EMPLOYEES IN FULL AND PART-TIME EMPLOYMENT; Spring 1984 - Spring 2006

(Thousands)

	ALL FULL-TIME			ALL PART-TIME			ALL EMPLOYEES ¹
	TOTAL	MALES	FEMALES	TOTAL	MALES	FEMALES	
Spring 1984	383	242	141	83	9	74	466
Spring 1985	382	251	131	83	7	76	465
Spring 1986	394	249	145	84	8	75	478
Spring 1987	380	235	146	81	9	72	461
Spring 1988	393	246	148	88	8	80	481
Spring 1989	399	251	148	89	10	78	488
Spring 1990	403	249	155	94	10	84	498
Spring 1991	405	251	154	91	10	82	496
Spring 1992	397	241	156	100	11	89	497
Spring 1993	391	242	149	98	11	87	490
Spring 1994	384	234	150	104	10	94	488
Spring 1995	387	236	151	116	14	103	503
Spring 1996	407	250	157	121	14	107	528
Spring 1997	425	255	170	118	17	101	543
Spring 1998	438	263	175	122	22	100	561
Spring 1999	452	270	182	123	21	102	575
Spring 2000	429	270	160	130	19	111	559
Spring 2001	458	278	180	127	20	106	585
Spring 2002	460	285	175	144	18	125	604
Spring 2003	472	292	180	149	26	123	621
Spring 2004	454	267	187	134	23	111	588
Spring 2005	464	275	189	140	22	118	604
Spring 2006	479	275	203	136	23	113	616

See technical note for definitions and comments.

¹includes some who did not state if working full or part time

TABLE 5: JOB RELATED TRAINING (received by working age employees)¹
Spring 1984 - Spring 2006

(Thousands)

	MALES	FEMALES	ALL PERSONS
Spring 1984	21	11	32
Spring 1985	22	14	37
Spring 1986	24	17	41
Spring 1987	22	17	40
Spring 1988	27	20	47
Spring 1989	28	23	51
Spring 1990	28	25	53
Spring 1991	29	30	58
Spring 1992	28	33	61
Spring 1993	27	29	56
Spring 1994	32	30	62
Spring 1995	25	31	56
Spring 1996	22	28	50
Spring 1997	35	36	71
Spring 1998	33	44	77
Spring 1999	35	37	72
Spring 2000	24	34	59
Spring 2001	36	40	76
Spring 2002	39	45	84
Spring 2003	39	45	84
Spring 2004	27	35	61
Spring 2005	32	38	70
Spring 2006	25	30	55

See technical note for definitions and comments.

¹Working age employees receiving job-related training in the last 4 weeks

TABLE 6a: SELF-EMPLOYMENT BY INDUSTRY (SIC 03)¹; Spring 1994 - Spring 2006
ALL PERSONS

SIC 2003 Section	Spring 1994	Spring 1995	Spring 1996	Spring 1997	Spring 1998	Spring 1999	Spring 2000	Spring 2001	Spring 2002	Spring 2003	Spring 2004	Spring 2005	Spring 2006
A/B Agriculture, hunting forestry and fishing	24%	23%	23%	26%	27%	28%	26%	18%	27%	19%	20%	21%	15%
C/D/E Mining & Quarrying / Manufacturing / Electricity gas & Water supply	7%	8%	*	*	8%	*	*	*	*	*	*	7%	7%
F Construction	20%	22%	27%	23%	17%	21%	23%	27%	25%	29%	29%	27%	26%
G Wholesale, retail & motor trade.	23%	18%	19%	17%	15%	13%	17%	17%	13%	15%	14%	12%	14%
H -O² Other Service Sector Industries	26%	28%	27%	26%	33%	29%	27%	33%	28%	31%	33%	33%	37%
All Industries³ (=100%)	93	101	95	103	98	94	98	96	98	104	109	119	121

TABLE 6b: SELF-EMPLOYMENT BY INDUSTRY (SIC 03)¹; Spring 1994 - Spring 2006
MALES

SIC 2003 Section	Spring 1994	Spring 1995	Spring 1996	Spring 1997	Spring 1998	Spring 1999	Spring 2000	Spring 2001	Spring 2002	Spring 2003	Spring 2004	Spring 2005	Spring 2006
A/B Agriculture, hunting forestry and fishing	26%	26%	25%	30%	31%	33%	28%	20%	29%	21%	23%	24%	17%
C/D/E Mining & Quarrying / Manufacturing / Electricity gas & Water supply	*	*	*	*	*	*	*	*	*	*	*	*	*
F Construction	23%	26%	31%	27%	19%	26%	27%	31%	29%	33%	34%	32%	31%
G Wholesale, retail & motor trade.	22%	15%	18%	16%	15%	14%	15%	16%	12%	15%	13%	12%	14%
H -O² Other Service Sector Industries	22%	24%	22%	19%	25%	19%	22%	27%	22%	26%	27%	25%	29%
All Industries³ (=100%)	79	84	81	84	83	77	82	81	82	88	90	99	99

¹ SIC 03 : Standard Industrial Classification 2003, see technical note for definitions and comments.

² Hotels and restaurants / Transport, storage and communication / Financial Intermediation / Real estate, renting and business service activities / Public administration and defence / Education / Health and social work / Other community, social and personal service activities.

³ Total excludes those who did not state their industry.

* sample size too small for a reliable estimate

TABLE 7: QUALIFICATION LEVELS BY GENDER OF THE NI WORKING AGE POPULATION ; Spring 1994 - Spring 2006

ALL PERSONS

(Thousands)

	Spring 1994	Spring 1995	Spring 1996	Spring 1997	Spring 1998	Spring 1999	Spring 2000	Spring 2001	Spring 2002	Spring 2003	Spring 2004	Spring 2005	Spring 2006
Degree or equivalent	9%	9%	10%	10%	11%	12%	12%	12%	14%	13%	16%	15%	16%
Other higher below degree	6%	7%	7%	7%	7%	7%	6%	7%	8%	8%	7%	8%	8%
A-Level or equivalent	23%	25%	24%	24%	24%	25%	24%	24%	25%	27%	25%	24%	26%
GCSE A-C or equivalent	18%	18%	18%	18%	21%	21%	22%	23%	22%	21%	21%	22%	22%
Other qualifications	8%	8%	9%	14%	10%	9%	9%	8%	7%	7%	6%	6%	6%
No qualifications	35%	33%	31%	27%	27%	27%	27%	26%	24%	24%	25%	24%	22%
All (000's =100%)	974	963	961	983	986	994	994	1,015	1,023	1,024	1,035	1,034	1,041

MALES

	Spring 1994	Spring 1995	Spring 1996	Spring 1997	Spring 1998	Spring 1999	Spring 2000	Spring 2001	Spring 2002	Spring 2003	Spring 2004	Spring 2005	Spring 2006
Degree or equivalent	10%	9%	11%	11%	12%	12%	14%	12%	13%	13%	16%	15%	15%
Other higher below degree	5%	5%	5%	6%	6%	5%	5%	6%	6%	6%	6%	6%	5%
A-Level or equivalent	33%	35%	35%	34%	32%	32%	32%	32%	34%	37%	33%	31%	33%
GCSE A-C or equivalent	13%	14%	13%	13%	17%	16%	18%	18%	18%	16%	17%	17%	18%
Other qualifications	5%	6%	6%	10%	7%	7%	6%	7%	6%	5%	5%	6%	5%
No qualifications	35%	31%	30%	25%	26%	27%	26%	25%	23%	23%	24%	24%	23%
All (000's = 100%)	498	491	492	503	503	508	505	519	523	525	529	530	533

FEMALES

	Spring 1994	Spring 1995	Spring 1996	Spring 1997	Spring 1998	Spring 1999	Spring 2000	Spring 2001	Spring 2002	Spring 2003	Spring 2004	Spring 2005	Spring 2006
Degree or equivalent	8%	8%	9%	9%	10%	11%	11%	12%	14%	14%	17%	15%	17%
Other higher below degree	8%	9%	10%	8%	9%	9%	8%	8%	9%	9%	9%	10%	10%
A-Level or equivalent	13%	15%	14%	14%	16%	16%	16%	15%	15%	17%	16%	16%	18%
GCSE A-C or equivalent	24%	23%	24%	22%	25%	26%	26%	27%	27%	27%	25%	27%	27%
Other qualifications	11%	10%	11%	17%	12%	10%	12%	10%	8%	8%	8%	7%	7%
No qualifications	36%	35%	33%	29%	28%	27%	28%	27%	26%	26%	25%	25%	21%
All (000's = 100%)	475	471	468	480	483	486	488	495	499	500	506	505	508

Total excludes those who did not state their highest level of qualification.

Please refer to Technical Notes for full definition of educational attainment categories.

TABLE 8: QUALIFICATION LEVELS BY GENDER OF THOSE IN EMPLOYMENT ; Spring 1994 - Spring 2006

ALL PERSONS

(Thousands)

	Spring 1994	Spring 1995	Spring 1996	Spring 1997	Spring 1998	Spring 1999	Spring 2000	Spring 2001	Spring 2002	Spring 2003	Spring 2004	Spring 2005	Spring 2006
Degree or equivalent	12%	12%	13%	14%	15%	15%	17%	16%	18%	17%	21%	19%	20%
Other higher below degree	8%	9%	9%	9%	9%	9%	8%	9%	10%	9%	9%	10%	10%
A-Level or equivalent	25%	28%	27%	25%	26%	26%	26%	26%	26%	29%	25%	25%	28%
GCSE A-C or equivalent	18%	19%	20%	18%	21%	21%	21%	23%	22%	22%	20%	21%	21%
Other qualifications	8%	9%	9%	14%	10%	9%	8%	8%	8%	6%	7%	7%	6%
No qualifications	27%	24%	22%	20%	19%	19%	20%	18%	16%	17%	17%	18%	15%
All (000's = 100%)	605	608	622	658	671	682	663	699	710	734	708	730	741

MALES

	Spring 1994	Spring 1995	Spring 1996	Spring 1997	Spring 1998	Spring 1999	Spring 2000	Spring 2001	Spring 2002	Spring 2003	Spring 2004	Spring 2005	Spring 2006
Degree or equivalent	13%	12%	14%	14%	15%	15%	17%	15%	17%	15%	19%	18%	18%
Other higher below degree	6%	6%	6%	7%	7%	6%	6%	7%	7%	7%	7%	7%	6%
A-Level or equivalent	35%	37%	37%	35%	33%	34%	33%	34%	35%	39%	34%	32%	36%
GCSE A-C or equivalent	13%	14%	14%	13%	17%	16%	17%	18%	18%	17%	16%	17%	17%
Other qualifications	6%	7%	7%	10%	8%	8%	6%	7%	7%	5%	5%	6%	5%
No qualifications	28%	24%	22%	20%	20%	21%	21%	19%	16%	17%	18%	20%	17%
All (000's = 100%)	337	334	344	363	375	375	371	390	390	411	385	399	401

FEMALES

	Spring 1994	Spring 1995	Spring 1996	Spring 1997	Spring 1998	Spring 1999	Spring 2000	Spring 2001	Spring 2002	Spring 2003	Spring 2004	Spring 2005	Spring 2006
Degree or equivalent	12%	12%	13%	13%	15%	16%	17%	17%	21%	19%	23%	21%	22%
Other higher below degree	12%	12%	13%	12%	12%	13%	11%	11%	13%	13%	12%	13%	14%
A-Level or equivalent	13%	16%	14%	13%	17%	17%	17%	16%	15%	16%	15%	16%	18%
GCSE A-C or equivalent	26%	24%	27%	25%	26%	27%	27%	29%	28%	29%	25%	26%	26%
Other qualifications	11%	11%	11%	18%	12%	10%	11%	10%	8%	7%	9%	7%	7%
No qualifications	27%	25%	22%	20%	17%	17%	17%	18%	15%	16%	15%	17%	13%
All (000's = 100%)	268	274	279	295	297	308	292	309	320	323	323	331	340

Total excludes those who did not state their highest level of qualification.

Please refer to Technical Notes for full definition of educational attainment categories.

TABLE 9a: AGE DISTRIBUTION OF THOSE IN EMPLOYMENT ; Spring 1984 - Spring 2006

ALL PERSONS

(Thousands)

	Spring 1984	Spring 1985	Spring 1986	Spring 1987	Spring 1988	Spring 1989	Spring 1990	Spring 1991	Spring 1992	Spring 1993	Spring 1994
Age Band											
16-19	45	48	49	49	47	48	47	45	40	34	35
20-24	81	79	76	84	86	86	89	82	81	76	69
25-29	65	68	78	75	78	80	88	86	88	85	89
30-34	59	60	65	62	71	73	76	78	78	84	88
35-39	63	60	64	62	66	64	63	69	70	75	77
40-44	55	58	60	60	62	66	65	67	68	66	64
45-49	54	52	52	54	57	60	60	61	66	63	64
50-54	49	46	45	43	45	48	49	49	51	50	54
55-59	40	40	39	37	39	36	38	37	38	38	40
60-64	28	24	24	24	20	23	23	22	24	23	18
65+	12	9	10	11	8	10	11	8	12	10	11
ALL 16+	551	542	560	561	579	595	610	607	617	604	608

	Spring 1995	Spring 1996	Spring 1997	Spring 1998	Spring 1999	Spring 2000	Spring 2001	Spring 2002	Spring 2003	Spring 2004	Spring 2005	Spring 2006
Age Band												
16-19	34	40	38	42	38	33	40	35	43	38	33	35
20-24	73	75	75	81	74	72	74	69	80	73	76	83
25-29	89	97	100	97	90	87	86	85	88	82	87	85
30-34	87	89	99	95	95	93	97	103	92	93	94	97
35-39	82	83	84	89	88	94	99	93	96	100	98	95
40-44	70	75	75	78	83	80	90	93	94	91	99	97
45-49	67	67	73	72	76	72	72	79	80	79	86	90
50-54	54	56	59	58	64	65	64	70	70	67	67	67
55-59	38	37	39	38	44	46	44	48	55	54	52	57
60-64	22	21	23	21	22	20	24	24	29	28	33	28
65+	14	12	12	9	13	12	10	13	14	9	13	15
ALL 16+	629	652	677	681	687	673	701	713	742	713	737	749

See technical note for definitions and comments

TABLE 9b: AGE DISTRIBUTION OF THOSE IN EMPLOYMENT ; Spring 1984 - Spring 2006

MALES

(Thousands)

	Spring 1984	Spring 1985	Spring 1986	Spring 1987	Spring 1988	Spring 1989	Spring 1990	Spring 1991	Spring 1992	Spring 1993	Spring 1994
Age Band											
16-19	24	26	26	26	24	30	26	25	22	21	20
20-24	42	42	40	45	44	48	47	44	41	40	37
25-29	37	41	45	43	45	48	51	49	47	47	47
30-34	38	36	39	38	41	41	43	45	44	47	49
35-39	39	38	39	37	38	38	37	39	40	42	42
40-44	32	33	36	34	37	38	35	38	38	37	37
45-49	31	31	29	31	33	34	32	34	36	36	34
50-54	27	27	26	26	27	27	28	28	29	28	29
55-59	24	24	23	21	24	22	23	22	22	22	25
60-64	20	18	17	16	14	16	15	15	15	15	12
65+	9	6	7	8	6	7	8	6	8	8	8
ALL 16+	324	321	327	324	332	348	346	346	343	343	339

	Spring 1995	Spring 1996	Spring 1997	Spring 1998	Spring 1999	Spring 2000	Spring 2001	Spring 2002	Spring 2003	Spring 2004	Spring 2005	Spring 2006
Age Band												
16-19	19	21	20	25	20	19	24	20	25	22	17	20
20-24	38	38	39	41	39	40	42	37	44	36	42	42
25-29	48	51	55	53	47	47	46	46	47	42	47	43
30-34	47	50	55	54	52	52	52	56	53	49	49	52
35-39	44	45	45	49	49	52	55	53	53	57	53	52
40-44	39	40	40	43	45	43	48	47	52	49	53	53
45-49	36	38	39	39	40	42	38	42	44	42	44	46
50-54	31	32	32	32	35	35	37	38	38	39	37	38
55-59	22	22	22	21	25	26	25	28	32	29	31	32
60-64	14	13	16	15	14	12	15	14	17	18	22	18
65+	10	9	9	*	10	10	8	10	11	*	9	9
ALL 16+	347	360	373	381	377	377	391	392	415	389	403	406

See technical note for definitions and comments.

*sample size too small for a reliable estimate.

TABLE 9c: AGE DISTRIBUTION OF THOSE IN EMPLOYMENT ; Spring 1984 - Spring 2006

FEMALES

(Thousands)

	Spring 1984	Spring 1985	Spring 1986	Spring 1987	Spring 1988	Spring 1989	Spring 1990	Spring 1991	Spring 1992	Spring 1993	Spring 1994
Age Band											
16-19	21	22	22	24	23	18	22	20	18	13	15
20-24	38	37	36	39	42	38	42	38	40	36	33
25-29	28	27	33	32	34	32	37	37	41	38	42
30-34	21	23	27	24	30	32	33	33	34	36	39
35-39	24	23	25	25	28	26	26	31	30	33	35
40-44	23	25	24	26	25	28	30	29	30	28	28
45-49	23	21	23	23	25	26	28	27	30	26	30
50-54	22	19	19	17	18	21	21	22	22	22	25
55-59	17	16	15	15	14	15	15	15	16	17	15
60+	11	9	10	11	8	10	11	9	12	10	8
ALL 16+	228	222	233	237	247	246	264	261	274	261	269

	Spring 1995	Spring 1996	Spring 1997	Spring 1998	Spring 1999	Spring 2000	Spring 2001	Spring 2002	Spring 2003	Spring 2004	Spring 2005	Spring 2006
Age Band												
16-19	15	19	18	16	17	14	16	16	18	16	16	15
20-24	35	37	35	40	35	33	32	33	36	37	34	42
25-29	41	46	44	44	43	40	40	39	41	40	40	42
30-34	40	38	43	41	43	41	45	47	40	44	45	45
35-39	39	38	39	40	39	42	44	40	43	43	46	43
40-44	30	34	35	35	38	37	42	46	43	42	46	43
45-49	31	29	34	33	36	30	34	37	36	38	41	45
50-54	23	24	27	27	29	30	27	32	32	28	30	29
55-59	16	15	17	17	19	20	19	20	23	24	21	25
60+	12	11	11	*	11	10	11	13	15	12	15	15
ALL 16+	281	291	304	300	310	296	310	321	327	324	333	344

See technical note for definitions and comments.

*sample size too small for a reliable estimate.

TABLE 10a: EMPLOYMENT BY INDUSTRY (SIC 03)¹; Spring 1994 - Spring 2006

ALL PERSONS

(Excludes persons on Government training schemes)

SIC 2003 Section	Spring 1994	Spring 1995	Spring 1996	Spring 1997	Spring 1998	Spring 1999	Spring 2000	Spring 2001	Spring 2002	Spring 2003	Spring 2004	Spring 2005	Spring 2006
A/B Agriculture, hunting forestry and fishing	5%	6%	5%	5%	5%	5%	6%	4%	5%	4%	4%	4%	3%
C Mining and quarrying	*	*	*	*	*	*	*	*	*	*	*	*	*
D Manufacturing	15%	16%	15%	18%	17%	16%	17%	14%	15%	13%	12%	13%	14%
E Electricity, gas and water supply	1%	*	*	*	*	*	*	*	*	*	*	*	*
F Construction	7%	9%	9%	9%	8%	9%	10%	10%	10%	12%	12%	10%	10%
G Wholesale and retail trade etc.	17%	16%	17%	14%	16%	15%	15%	15%	15%	15%	15%	15%	16%
H Hotels and restaurants	4%	5%	5%	3%	3%	4%	4%	4%	3%	5%	4%	4%	4%
I Transport, storage and communication	4%	5%	4%	5%	5%	5%	5%	5%	5%	5%	5%	5%	5%
J Financial Intermediation	3%	2%	3%	3%	3%	2%	3%	3%	3%	3%	2%	2%	3%
K Real estate, renting and business service activities	4%	2%	2%	3%	4%	4%	5%	6%	6%	5%	6%	7%	7%
L Public administration and defence; compulsory social security	16%	15%	17%	14%	12%	11%	12%	16%	16%	17%	15%	13%	12%
M Education	9%	10%	9%	9%	10%	9%	7%	7%	8%	6%	9%	9%	8%
N Health and social work	10%	10%	9%	12%	13%	14%	12%	11%	11%	11%	12%	14%	14%
O Other community, social and personal service activities	5%	4%	3%	4%	4%	4%	3%	3%	3%	4%	4%	4%	4%
All Industries² (000's=100%)	585	609	622	647	660	671	660	680	701	726	701	725	739

¹ SIC 03 : Standard Industrial Classification 2003, see technical note for definitions and comments.

² Total excludes those who did not state their industry.

* sample size too small for a reliable estimate

TABLE 10b: EMPLOYMENT BY INDUSTRY (SIC 03)¹; Spring 1994 - Spring 2006

MALES

(Excludes persons on Government training schemes)

SIC 2003 Section		Spring 1994	Spring 1995	Spring 1996	Spring 1997	Spring 1998	Spring 1999	Spring 2000	Spring 2001	Spring 2002	Spring 2003	Spring 2004	Spring 2005	Spring 2006
A/B	Agriculture, hunting forestry and fishing	8%	9%	8%	8%	8%	9%	9%	6%	8%	6%	7%	7%	5%
C	Mining and quarrying	*	*	*	*	*	*	*	*	*	*	*	*	*
D	Manufacturing	20%	19%	19%	22%	22%	21%	22%	19%	21%	18%	17%	19%	20%
E	Electricity, gas and water supply	*	*	*	*	*	*	*	*	*	*	*	*	*
F	Construction	12%	15%	15%	15%	13%	15%	16%	17%	16%	19%	20%	16%	17%
G	Wholesale and retail trade etc.	17%	14%	16%	13%	16%	15%	13%	14%	14%	14%	14%	15%	15%
H	Hotels and restaurants	3%	3%	4%	2%	2%	3%	3%	3%	2%	4%	3%	3%	4%
I	Transport, storage and communication	6%	7%	7%	7%	8%	6%	7%	7%	6%	6%	8%	7%	6%
J	Financial Intermediation	3%	*	*	*	*	*	*	*	2%	*	*	2%	*
K	Real estate, renting and business service activities	3%	*	*	3%	4%	4%	5%	7%	6%	5%	6%	5%	7%
L	Public administration and defence; compulsory social security	15%	14%	14%	15%	12%	12%	12%	12%	10%	14%	13%	12%	11%
M	Education	5%	6%	5%	5%	5%	5%	3%	4%	6%	3%	4%	4%	3%
N	Health and social work	3%	4%	3%	3%	5%	5%	3%	3%	3%	4%	4%	6%	4%
O	Other community, social and personal service activities	4%	3%	3%	2%	3%	3%	3%	3%	3%	4%	3%	3%	4%
All Industries² (000's=100%)		325	336	343	354	368	370	372	377	386	406	381	397	399

¹ SIC 03 : Standard Industrial Classification 2003, see technical note for definitions and comments.

² Total excludes those who did not state their industry.

* sample size too small for a reliable estimate

TABLE 10c: EMPLOYMENT BY INDUSTRY (SIC 03)¹; Spring 1994 - Spring 2006

FEMALES

(Excludes persons on Government training schemes)

SIC 2003 Section		Spring 1994	Spring 1995	Spring 1996	Spring 1997	Spring 1998	Spring 1999	Spring 2000	Spring 2001	Spring 2002	Spring 2003	Spring 2004	Spring 2005	Spring 2006
A/B	Agriculture, hunting forestry and fishing	*	*	*	*	*	*	*	*	*	*	*	*	*
C	Mining and quarrying	*	*	*	*	*	*	*	*	*	*	*	*	*
D	Manufacturing	10%	11%	10%	12%	12%	10%	10%	9%	8%	8%	7%	6%	7%
E	Electricity, gas and water supply	*	*	*	*	*	*	*	*	*	*	*	*	*
F	Construction	*	*	*	*	*	*	*	*	*	*	*	*	*
G	Wholesale and retail trade etc.	16%	17%	18%	16%	16%	15%	17%	16%	15%	17%	16%	16%	16%
H	Hotels and restaurants	5%	6%	6%	5%	4%	5%	5%	5%	3%	5%	5%	5%	5%
I	Transport, storage and communication	*	*	*	*	*	4%	*	3%	3%	3%	*	3%	3%
J	Financial Intermediation	3%	*	5%	3%	3%	4%	4%	4%	4%	4%	3%	3%	3%
K	Real estate, renting and business service activities	4%	*	*	3%	4%	5%	5%	5%	6%	5%	6%	8%	6%
L	Public administration and defence; compulsory social security	16%	16%	20%	14%	11%	11%	12%	21%	24%	22%	17%	13%	12%
M	Education	13%	15%	14%	14%	16%	14%	12%	10%	11%	10%	14%	15%	15%
N	Health and social work	19%	18%	17%	22%	24%	24%	25%	21%	20%	21%	21%	23%	25%
O	Other community, social and personal service activities	6%	6%	4%	5%	5%	5%	4%	4%	4%	4%	5%	4%	4%
All Industries² (000's=100%)		259	273	279	294	292	301	289	302	315	321	320	328	340

¹ SIC 03 : Standard Industrial Classification 2003, see technical note for definitions and comments.

² Total excludes those who did not state their industry.

* sample size too small for a reliable estimate

TABLE 11a: EMPLOYMENT BY OCCUPATION (SOC) ; Spring 1991 - Spring 2000

ALL PERSONS

(Thousands)

SOC Group	Spring 1991	Spring 1992	Spring 1993	Spring 1994	Spring 1995	Spring 1996	Spring 1997	Spring 1998	Spring 1999	Spring 2000
I Managers and Administrators	13%	15%	13%	15%	16%	16%	18%	17%	15%	15%
II Professional Occupations	9%	9%	11%	10%	9%	10%	10%	10%	9%	10%
III Associate Professional and Technical Occupations	7%	8%	7%	7%	8%	8%	6%	7%	7%	8%
IV Clerical and Secretarial Occupations	16%	16%	16%	15%	15%	16%	16%	15%	17%	16%
V Craft and Related Occupations	17%	15%	14%	15%	14%	15%	14%	14%	15%	16%
VI Personal and Protective Service Occupations	9%	10%	11%	11%	10%	10%	11%	10%	12%	13%
VII Sales Occupations	8%	7%	8%	9%	8%	8%	8%	8%	8%	7%
VIII Plant and Machine Operatives	9%	9%	10%	9%	9%	8%	10%	10%	9%	9%
IX Other Occupations	11%	11%	10%	10%	10%	9%	9%	9%	8%	7%
All Occupations¹ (000's=100%)	599	587	594	601	623	633	660	674	685	671

¹ Total excludes those who did not state their occupation.
See technical note for definitions and comments.

TABLE 11b: EMPLOYMENT BY OCCUPATION (SOC) ; Spring 1991 - Spring 2000

MALES

(Thousands)

SOC Group	Spring 1991	Spring 1992	Spring 1993	Spring 1994	Spring 1995	Spring 1996	Spring 1997	Spring 1998	Spring 1999	Spring 2000
I Managers and Administrators	17%	19%	18%	20%	21%	23%	25%	23%	20%	20%
II Professional Occupations	9%	9%	11%	9%	8%	10%	10%	9%	8%	9%
III Associate Professional and Technical Occupations	5%	7%	5%	5%	6%	6%	4%	5%	5%	5%
IV Clerical and Secretarial Occupations	9%	10%	8%	9%	9%	8%	8%	8%	9%	9%
V Craft and Related Occupations	26%	23%	22%	24%	23%	23%	23%	22%	24%	26%
VI Personal and Protective Service Occupations	5%	7%	7%	7%	6%	7%	6%	6%	6%	7%
VII Sales Occupations	5%	5%	6%	6%	5%	4%	4%	4%	6%	4%
VIII Plant and Machine Operatives	14%	12%	14%	13%	13%	12%	14%	15%	14%	13%
IX Other Occupations	9%	10%	8%	8%	9%	8%	8%	9%	8%	7%
All Occupations¹ (000's=100%)	340	323	337	334	344	348	361	377	376	376

¹Total excludes those who did not state their occupation.
See technical note for definitions and comments.

TABLE 11c: EMPLOYMENT BY OCCUPATION (SOC) ; Spring 1991 - Spring 2000

FEMALES

SOC Group	(Thousands)									
	Spring 1991	Spring 1992	Spring 1993	Spring 1994	Spring 1995	Spring 1996	Spring 1997	Spring 1998	Spring 1999	Spring 2000
I Managers and Administrators	8%	10%	7%	9%	10%	7%	9%	10%	9%	8%
II Professional Occupations	9%	10%	10%	10%	9%	11%	10%	12%	10%	10%
III Associate Professional and Technical Occupations	10%	10%	9%	10%	11%	10%	9%	9%	9%	11%
IV Clerical and Secretarial Occupations	25%	23%	26%	23%	23%	26%	26%	24%	27%	25%
V Craft and Related Occupations	5%	7%	4%	3%	3%	6%	3%	4%	4%	3%
VI Personal and Protective Service Occupations	14%	15%	16%	16%	16%	13%	17%	16%	19%	20%
VII Sales Occupations	11%	9%	10%	12%	12%	14%	11%	11%	10%	11%
VIII Plant and Machine Operatives	4%	5%	4%	4%	5%	*	5%	3%	3%	3%
IX Other Occupations	13%	11%	13%	12%	12%	10%	10%	10%	8%	7%
All Occupations¹ (000's=100%)	260	265	258	267	280	284	299	296	309	295

¹Total excludes those who did not state their occupation.

* Sample size too small for a reliable estimate.

See technical note for definitions and comments.

TABLE 12: EMPLOYMENT BY OCCUPATION AND GENDER (SOC2000) ; Spring 2001 - Spring 2006

ALL PERSONS

SOC (2000) Group		Spring 2001	Spring 2002	Spring 2003	Spring 2004	Spring 2005	Spring 2006
I	Managers and Senior Officials	11%	11%	11%	11%	10%	11%
II	Professional occupations	10%	12%	10%	13%	13%	11%
III	Associate Professional and Technical	10%	12%	12%	11%	12%	12%
IV	Administrative and Secretarial	13%	14%	14%	14%	13%	13%
V	Skilled Trades Occupations	17%	17%	17%	16%	18%	18%
VI	Personal Service Occupations	8%	7%	8%	8%	8%	8%
VII	Sales and Customer Service Occupations	7%	7%	8%	8%	8%	7%
VIII	Process, Plant and Machine Operatives	10%	10%	9%	8%	9%	9%
IX	Elementary Occupations	12%	11%	12%	11%	10%	10%
All Occupations¹ (000's=100%)		697	712	734	708	733	742

MALES

SOC (2000) Group		Spring 2001	Spring 2002	Spring 2003	Spring 2004	Spring 2005	Spring 2006
I	Managers and Senior Officials	14%	14%	15%	13%	11%	13%
II	Professional occupations	11%	11%	9%	13%	12%	10%
III	Associate Professional and Technical	9%	10%	10%	9%	11%	10%
IV	Administrative and Secretarial	6%	6%	7%	6%	5%	5%
V	Skilled Trades Occupations	27%	28%	28%	27%	30%	30%
VI	Personal Service Occupations	3%	2%	3%	2%	2%	*
VII	Sales and Customer Service Occupations	4%	4%	5%	4%	5%	4%
VIII	Process, Plant and Machine Operatives	15%	15%	13%	14%	14%	14%
IX	Elementary Occupations	11%	9%	11%	12%	10%	11%
All Occupations¹ (000's=100%)		389	391	410	385	401	402

FEMALES

SOC (2000) Group		Spring 2001	Spring 2002	Spring 2003	Spring 2004	Spring 2005	Spring 2006
I	Managers and Senior Officials	7%	9%	7%	8%	9%	8%
II	Professional occupations	10%	12%	10%	13%	13%	13%
III	Associate Professional and Technical	12%	14%	15%	14%	13%	15%
IV	Administrative and Secretarial	23%	23%	22%	24%	23%	23%
V	Skilled Trades Occupations	3%	3%	3%	2%	2%	3%
VI	Personal Service Occupations	16%	14%	14%	14%	15%	15%
VII	Sales and Customer Service Occupations	11%	10%	12%	13%	12%	11%
VIII	Process, Plant and Machine Operatives	4%	3%	3%	2%	2%	3%
IX	Elementary Occupations	14%	12%	13%	10%	10%	9%
All Occupations¹ (000's=100%)		308	321	325	323	331	341

¹Total excludes those who did not state their occupation.

* Sample size too small for a reliable estimate.

See technical note for definitions and comments.

TABLE 13: DURATION OF UNEMPLOYMENT ; Spring 1986¹ - Spring 2006

ALL PERSONS

(Thousands)

Length of time Unemployed	Spring 1986	Spring 1987	Spring 1988	Spring 1989	Spring 1990	Spring 1991	Spring 1992	Spring 1993	Spring 1994	Spring 1995
Less than 6 months	25	19	23	20	21	25	24	22	20	21
6 months but less than 1 year	17	16	13	10	13	14	12	14	12	8
1 year but less than 2 years	16	16	13	13	8	11	15	18	12	13
2 years but less than 4 years	17	18	18	18	11	12	10	13	14	13
4 years or more	29	30	26	25	27	23	24	20	20	21
Long term (1 year or more) as percentage of total	59.4%	64.1%	62.0%	64.3%	57.3%	54.0%	57.6%	57.9%	59.1%	61.3%
Total Unemployed²	105	100	93	86	80	84	85	88	79	77

Length of time Unemployed	Spring 1996	Spring 1997	Spring 1998	Spring 1999	Spring 2000	Spring 2001	Spring 2002	Spring 2003	Spring 2004	Spring 2005	Spring 2006
Less than 6 months	20	16	18	20	24	19	21	17	12	14	13
6 months but less than 1 year	9	*	11	*	*	*	*	*	*	*	*
1 year but less than 2 years	10	*	*	11	*	*	*	*	*	*	*
2 years but less than 4 years	12	*	*	*	*	*	*	*	*	*	*
4 years or more	16	17	10	15	9	*	*	*	*	*	*
Long term (1 year or more) as percentage of total	56.2%	56.6%	46.0%	54.0%	39.8%	43.0%	37.8%	43.1%	45.7%	43.5%	37.5%
Total Unemployed²	67	54	52	53	50	46	41	40	35	36	34

¹ Data for 1984 & 1985 are not split into suitable time periods, see technical note for definitions and comments.

²Total includes those that did not specify the length of time unemployed.

* sample size too small for a reliable estimate

TABLE 14: AGE DISTRIBUTION OF THE UNEMPLOYED ; Spring 1984 - Spring 2006

ALL PERSONS

(Thousands)

	Spring 1984	Spring 1985	Spring 1986	Spring 1987	Spring 1988	Spring 1989	Spring 1990	Spring 1991	Spring 1992	Spring 1993	Spring 1994
Age Band											
16-24	47	41	45	35	36	30	23	26	22	25	21
16-24 rate	27.1%	24.3%	26.5%	20.8%	21.2%	18.1%	14.6%	16.7%	15.6%	18.7%	16.9%
25-49	52	55	46	52	45	44	47	46	51	50	49
25-49 rate	15.0%	15.5%	12.7%	14.3%	11.8%	11.3%	11.7%	11.2%	12.1%	11.9%	11.4%
50+	12	11	14	13	13	12	10	13	11	12	9
50+ rate	8.6%	8.6%	10.5%	10.3%	10.3%	9.5%	7.7%	9.9%	8.4%	9.0%	6.7%
total 16+	111	106	105	100	93	86	80	84	85	88	79
total 16+ rate	16.8%	16.4%	15.8%	15.2%	13.9%	12.6%	11.6%	12.2%	12.1%	12.7%	11.5%

	Spring 1995	Spring 1996	Spring 1997	Spring 1998	Spring 1999	Spring 2000	Spring 2001	Spring 2002	Spring 2003	Spring 2004	Spring 2005	Spring 2006
Age Band												
16-24	20	17	12	13	13	13	13	12	14	12	15	12
16-24 rate	15.7%	13.1%	9.9%	9.7%	10.1%	11.2%	10.0%	10.6%	9.9%	9.6%	12.2%	8.9%
25-49	47	41	32	30	35	30	26	22	20	17	16	16
25-49 rate	10.7%	9.0%	6.9%	6.6%	7.5%	6.6%	5.6%	4.6%	4.2%	3.7%	3.4%	3.4%
50+	10	10	10	9	*	*	*	*	*	*	*	*
50+ rate	7.3%	7.1%	7.0%	6.7%	*	*	*	*	*	*	*	*
total 16+	77	68	54	53	53	50	46	41	41	35	36	34
total 16+ rate	10.9%	9.4%	7.4%	7.2%	7.1%	6.9%	6.2%	5.4%	5.2%	4.7%	4.6%	4.3%

See technical note for definitions and comments.

*sample size too small for a reliable estimate.

Technical Notes

2

Background

Following the UK's accession to the European Community, the Labour Force Survey (LFS) was carried out for the first time in 1973, under the terms of an EC Regulation. The Statistical Office of the European Communities co-ordinates information from all the Labour Force Surveys carried out by member states in order to assist in such matters as the allocation of Social Fund resources.

From 1973 to 1983, the LFS was carried out biennially in both Northern Ireland (NI) and Great Britain. Following a change in the requirements of the EC Regulation, from 1984 an annual survey was conducted and results referred to the spring months of each year. In March 1992 the GB portion of the survey moved onto a quarterly cycle and in December 1994 a quarterly survey was introduced in (NI). This statistics notice presents historical data from the annual and Spring LFS datasets, covering the months of March, April and May of each year.

The LFS is a sample survey carried out by interviewing individuals about their personal circumstances and work. It is the biggest regular household survey in NI and provides a rich source of information on the labour force using internationally agreed concepts and definitions.

The Department of Enterprise, Trade and Investment is responsible for ensuring that the survey is conducted in NI and for the analysis and interpretation of the results. However, the day-to-day management of the fieldwork, including data collection and database creation, rests with the Central Survey Unit (CSU) of the NI Statistics and Research Agency. CSU are also in charge of the creation of a Computer Assisted Interviewing questionnaire (designed to mirror that used in GB), the sampling of addresses and the carrying out of fieldwork using a team of specialist interviewers.

Sample Coverage

The sample of addresses for the LFS is obtained from the Valuation & Lands Agency list of domestic properties in Northern Ireland and the quarterly survey has been designed to give

reliable estimates of level for each quarter, as well as change over consecutive quarters.

These aims have been achieved by using an unclustered sample with a large element of overlap between quarters. The theoretical sample for each quarter consists of around 3,000 addresses, made up of five 'waves', each containing approximately 600 private households. Every sampled address is interviewed in five successive quarters, such that in any one quarter one wave will be receiving their first interview, one wave their second and so on, with one wave receiving their fifth and final interview. This results in an 80% sample overlap between quarters. Details of sampling errors are shown below.

As mentioned, the theoretical sample for the Northern Ireland Quarterly LFS comprises 3,000 addresses. However, due to the cumulative effect of refusals and ineligible addresses, the number of 'active' addresses is approximately 2,500 each quarter.

At each address, information is collected on the economic status and activity of all residents aged 16 and over during a specified week in the quarter (termed the reference week). Information on household size and composition is also recorded for each address.

Sampling Errors

Because the LFS is a sample survey, results are subject to sampling error, i.e. the actual proportion of the population in private households with a particular characteristic may differ from the proportion of the LFS sample with that characteristic. Accordingly, although percentages in most tables are quoted to the nearest whole number, they should not be regarded as having this degree of accuracy, and indeed some apparent trends over time may be misleading due to sampling error. In general, the larger the group, the more precise (proportionately) is the LFS estimate.

The following table shows the proportions obtained from the Spring 2006 survey for some key LFS variables and indicates their sampling accuracy. The confidence intervals represent the ranges either side of the LFS proportions which are 95% certain to include the true values of the quantities estimated.

LFS Proportions Of Total Private Household Population (16+), Including 95% Confidence Intervals, Spring 2006

	LFS Estimate	Confidence Interval
Economically active	59%	+/- 1.5%
In Employment	57%	+/- 1.6%
Employees*	82%	+/- 1.6%
Self-employed*	16%	+/- 1.5%
Unemployed	3%	+/- 0.5%
Economically inactive (16+)	41%	+/- 1.5%
Unemployment rate	4.3%	+/- 0.9%

* As a percentage of all in employment.

Confidence intervals for other proportions produced in this publication may be obtained on request from addresses given at the end of this note.

Publication Threshold

It is the nature of sampling variability that the smaller the group whose size is being estimated, the (proportionately) less precise that estimate is. LFS estimates of under 6,000 in annual datasets or 8,000 in quarterly datasets are not published in this supplement as they are likely to be unreliable. This revised publication threshold came into effect from 1 September 1999 and estimates below this threshold contained in earlier publications should, therefore, be treated with caution.

Grossing To Population Totals

The results presented in this report are calculated following the grossing of sample numbers to population levels. Each individual participating in the survey is given a weight or "grossing factor" which is related to that person's age and sex. In this way the final grossed results give the population total for NI and reflect the distributions by sex and age shown by the population figures.

Seasonal Adjustment

In conjunction with the Office for National Statistics (ONS) and consistent with all other UK regions, seasonally adjusted LFS estimates for the UK regions (including NI) have been reintroduced from Winter 2002/3. These also incorporate new sub-national adjustment factors by sex and age from the 2001 Census of Population. These seasonally adjusted estimates are shown in Tables 1a – 1c. All other estimates in this publication are not seasonally adjusted.

Re-weighting of LFS data to updated population estimates

The LFS seasonally adjusted data (i.e. Sections 1 & 8) has been revised to incorporate the latest population estimates. This revision affects data from the period January-March 2003 onwards. Details of the 're-weighting' methodology used to adjust key LFS estimates was published in the December 2002 edition of Labour Market Trends and can be accessed via the link below:

http://www.statistics.gov.uk/articles/labour_market_trends/Interim_lfs_estimates_Dec2002.pdf

The more detailed LFS microdata (unadjusted for seasonality) does not yet incorporate the latest Mid-Year Population data. The Office for National Statistics is currently re-engineering their systems to enable future population data to be incorporated into revised LFS microdata to the same timetable as that currently achieved for the key LFS time series data. It is planned for this statistical modernisation work to be completed in 2007. In the meantime small differences, due to revised population figures, may exist between key LFS time series data and LFS microdata.

Definitions

Working age

This refers to ages 16 to 59 for women and 16 to 64 for men.

In Employment

The LFS defines employment as those aged 16 and over who did at least one hour's paid work in the reference week (either as an employee or self-employed); those who had a job which they

were temporarily away from (on holiday for example); those participating in government training and employment programmes; and those doing unpaid family work.

Employment Rate

The percentage of people aged 16 and over who are in employment.

Employees/Self-employed

The division between employees and self-employed is based on survey respondents' own assessment of their employment status.

Unpaid Family Workers

The separate identification of this group in the LFS is in accordance with international recommendations. It comprises persons doing unpaid work for a business they own or a business that a relative owns.

Full-time/Part-time

The classification of employees, self-employed, those on government work-related training programmes and unpaid workers in their main job as full-time or part-time is on the basis of self-assessment. People on government-supported training and employment programmes who are at college in the survey reference week are classified as part-time.

Full-time Education

In the LFS this is defined to include those people over the age of 16 who state that they are still at school or in some other form of full-time education, including sandwich courses.

Unemployment

The International Labour Organisation (ILO) measure of unemployment refers to people without a job who were available to start work in the two weeks following their LFS interview and had either looked for work in the four weeks prior to interview or were waiting to start a job they had already obtained. This definition of unemployment is in accordance with that adopted by the 13th International Conference of Labour Statisticians, further clarified at the 14th ICLS, and promulgated by the ILO in 1987.

Unemployment Rate

The percentage of economically active people who are unemployed.

Duration of Unemployment

Duration of unemployment is defined as the shorter of the following two periods:

- (a) duration of active search for work; and
- (b) length of time since employment.

The short-term unemployed are those people who have been unemployed for less than 1 year, while the long-term unemployed are defined as those who have been unemployed for 1 year or more.

Educational Attainment Categories

Degree or higher = degree or degree equivalent and above incl. First degree, Postgraduate Diplomas and Professional qualifications.

Other higher below degree = other Higher Education below degree level incl. HND/HNC/BTEC (Higher), teaching and nursing qualifications.

A level or equivalent = incl. vocational level 3

GCSE A-C or equivalent = incl. Trade Apprenticeships, vocational level 2.

Other qualifications = incl. vocational level 1 and below.

Industry

The classification of respondents' industry of employment is based on the Standard Industrial Classification 2003: SIC(03)

Occupation

The classification of respondents' occupations are based on the Standard Occupational Classification (SOC), introduced in June 2000 which replaces SOC 90.

Further Information

Further information about the survey can be obtained by:

writing to:

Department of Enterprise,
Trade and Investment,
Statistics Research Branch,
Netherleigh, Massey Avenue,
Belfast BT4 2JP

telephoning: (028) 9052 9585

textphone: (028) 9052 9304

fax: (028) 9052 9459

e-mailing: paul.mckillen@detini.gov.uk

Publication now available on visiting web site:
www.statistics.detini.gov.uk