

# Quarterly Employment Survey

## 5

### Seasonally Adjusted

The June 2010 seasonally adjusted employee jobs figure stands at 699,230.

This represents a seasonally adjusted decrease of 0.2% (or 1,120 jobs) from the revised March 2010 estimate of 700,350.

Over the quarter seasonally adjusted employee jobs decreased in the Service Sector by 0.2% (1,090 jobs) and also in the Construction Sector by 2.0% (690 jobs). The Manufacturing sector increased over the quarter by 0.9% (630 jobs). "Other Industries" also increased by 0.1% (30 Jobs).

### Unadjusted

The June 2010 seasonally unadjusted figure stands at 697,950.

This represents a decrease of 0.2% (or 1,640 jobs) from March 2010 and a decrease of 1.0% (7,120 jobs) in the past year.

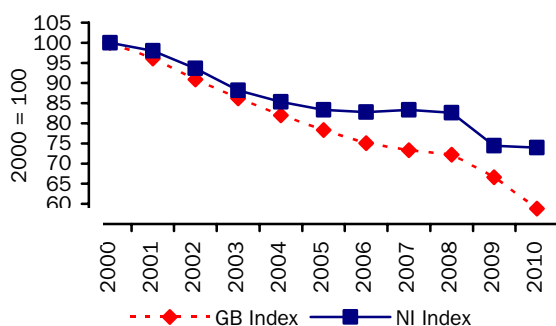
Over the year, June 2009 to June 2010, the unadjusted employee jobs figure for Construction decreased by 10.0% (3,810 jobs), Manufacturing employee jobs decreased by 0.7% (520 jobs) while employee jobs in the Service Sector decreased by 0.5% (2,590 jobs).

### Manufacturing Employee Jobs

The level of jobs in the Manufacturing sector in both NI and GB has declined significantly over the past 10 years.

### Manufacturing jobs for NI & GB indexed (June of each year\*)

Figure 11



\*GB figures for 2010 refer to March 2010

NI manufacturing jobs recorded a marked decline between 2000 and 2006, with the figure for 2006 falling to 83% of the 2000 figure. Manufacturing employee jobs in NI were fairly stable between 2006 and 2008, with the 2008 figure remaining at 83% of the 2000 level. However manufacturing jobs have fallen again in 2009 to 74% of their 2000 level and remain at that level in 2010.

Manufacturing jobs in GB have been in sharp decline from 2000 and the 2010 estimate stands at 59% of the 2000 level.

### Changes in the Structure of Manufacturing Jobs (NI)

Over the period 2000-2010, Manufacturing jobs in NI decreased by 26,310, with 18 of the 23 manufacturing divisions recording a decrease. The largest decrease occurred in the Manufacture of wearing apparel, which recorded 8,450 fewer jobs. There were 5,420 fewer jobs in the Manufacture of textiles, 4,980 fewer in the Manufacture of computer, electronic and optical products, 1,950 fewer in the Manufacture of other transport equipment and 1,800 fewer in the Manufacture of motor vehicles, trailers and semi-trailers.

However, these decreases were partially offset by increases in the Manufacture of fabricated metal products, except machinery and equipment (650), in the Manufacture of basic pharmaceutical products and pharmaceutical preparations (620) and in the Repair and installation of machinery and equipment (160).

The large decline in the Manufacture of Textiles and Wearing Apparel sectors has impacted on the structure of Northern Ireland Manufacturing jobs. In 2000 16.1% of Manufacturing jobs were located in the Textiles and Wearing Apparel sectors; by 2010 this had fallen to 3.2%.

**Quarterly Employment Survey**  
**Northern Ireland Seasonally Adjusted Employee Jobs\* June 2010**  
**Table 10**

|                           |                |                |                | % change in total  |                 |
|---------------------------|----------------|----------------|----------------|--------------------|-----------------|
|                           | Males          | Females        | All persons    | since last quarter | since last year |
| Manufacturing             | 58,510         | 16,150         | 74,670         | 0.9                | -0.7            |
| Construction <sup>1</sup> | 30,310         | 4,050          | 34,360         | -2.0               | -10.0           |
| Services                  | 227,510        | 342,950        | 570,460        | -0.2               | -0.5            |
| Other <sup>2</sup>        | 17,010         | 2,740          | 19,740         | 0.1                | -1.0            |
| <b>Total</b>              | <b>333,350</b> | <b>365,880</b> | <b>699,230</b> | <b>-0.2</b>        | <b>-1.0</b>     |

<sup>1</sup> Figures for females in the construction industry are not seasonally adjusted

<sup>2</sup> Covers Industry Sections A, B, D and E which have not been seasonally adjusted

\* Figures are rounded to the nearest 10 and may not sum due to rounding

**Northern Ireland Employee Jobs\* - Seasonally Adjusted Series**  
**Table 11**

|      |           | Manufacturing | Construction <sup>1</sup> | Services | Other Industries <sup>2</sup> | All Industries | Public <sup>3</sup> | Private <sup>3</sup> |
|------|-----------|---------------|---------------------------|----------|-------------------------------|----------------|---------------------|----------------------|
| 2004 | March     | 87,340        | 37,210                    | 534,170  | 22,610                        | 681,330        | 215,520             | 465,780              |
|      | June      | 86,310        | 37,230                    | 535,700  | 22,290                        | 681,530        | 213,871             | 467,590              |
|      | September | 85,890        | 37,250                    | 541,360  | 22,480                        | 686,970        | 217,505             | 469,590              |
|      | December  | 85,500        | 37,420                    | 544,550  | 22,770                        | 690,250        | 217,941             | 472,270              |
| 2005 | March     | 85,170        | 37,870                    | 551,240  | 22,430                        | 696,710        | 218,718             | 478,030              |
|      | June      | 84,290        | 38,780                    | 551,870  | 21,130                        | 696,060        | 219,892             | 476,080              |
|      | September | 84,160        | 39,300                    | 553,800  | 21,310                        | 698,560        | 220,763             | 477,830              |
|      | December  | 83,790        | 41,010                    | 557,270  | 21,390                        | 703,460        | 220,917             | 482,510              |
| 2006 | March     | 83,930        | 41,910                    | 559,290  | 21,390                        | 706,530        | 220,701             | 485,950              |
|      | June      | 83,730        | 42,320                    | 560,230  | 20,830                        | 707,120        | 220,860             | 486,190              |
|      | September | 83,850        | 42,680                    | 562,650  | 20,910                        | 710,100        | 220,956             | 489,100              |
|      | December  | 84,020        | 43,010                    | 564,490  | 20,990                        | 712,510        | 220,206             | 492,190              |
| 2007 | March     | 83,710        | 43,580                    | 567,000  | 21,050                        | 715,350        | 220,330             | 495,270              |
|      | June      | 84,200        | 44,730                    | 571,410  | 20,890                        | 721,230        | 220,996             | 500,200              |
|      | September | 83,960        | 45,310                    | 575,110  | 21,070                        | 725,450        | 219,364             | 505,970              |
|      | December  | 83,560        | 46,660                    | 578,070  | 20,430                        | 728,730        | 219,388             | 509,110              |
| 2008 | March     | 83,590        | 45,940                    | 581,450  | 20,360                        | 731,340        | 219,992             | 511,740              |
|      | June      | 83,460        | 44,800                    | 583,110  | 20,550                        | 731,920        | 218,909             | 513,050              |
|      | September | 82,210        | 43,400                    | 578,960  | 20,590                        | 725,160        | 216,297             | 508,600              |
|      | December  | 80,000        | 41,580                    | 576,330  | 20,150                        | 718,050        | 221,752             | 496,170              |
| 2009 | March     | 77,850        | 39,520                    | 573,780  | 20,040                        | 711,180        | 222,815             | 488,690              |
|      | June      | 75,180        | 38,170                    | 573,160  | 19,950                        | 706,450        | 223,778             | 482,740              |
|      | September | 73,730        | 36,680                    | 572,320  | 19,810                        | 702,530        | 223,873             | 478,320              |
|      | December  | 73,980        | 35,390                    | 572,750  | 19,730                        | 701,860        | 224,312             | 477,550              |
| 2010 | March     | 74,030        | 35,050                    | 571,550  | 19,720                        | 700,350        | 223,783             | 476,800              |
|      | June      | 74,670        | 34,360                    | 570,460  | 19,740                        | 699,230        | 223,580             | 475,790              |

<sup>1</sup> Figures for females in the construction industry are not seasonally adjusted

<sup>2</sup> Covers Industry Sections A, B, D and E which have not been seasonally adjusted

<sup>3</sup> Public and Private splits may not sum to total.

\* Figures are rounded to the nearest 10 and may not sum due to rounding

## Quarterly Employment Survey (QES) – Sample of data available on website

### The Northern Ireland Quarterly Employment Survey

Table 12

| Table Name | Description   | File Size |
|------------|---|-----------|
| 5.1        | <a href="#">NI Employee Jobs - Seasonally Adjusted June 2010</a>                                      | 15.5 KB   |
| 5.2        | <a href="#">NI Employee Jobs - Seasonally Adjusted 1998 – 2010</a>                                    | 15.5 KB   |
| 5.3        | <a href="#">NI Employee Jobs - Unadjusted 1998 – 2010</a>   | 15.5 KB   |
| 5.4        | <a href="#">NI Employee Jobs (Unadjusted) by Industry Section – June 2010</a>                         | 15.5 KB   |
| 5.5        | <a href="#">NI Public Sector Jobs (Unadjusted) – June 2010</a>  | 13.5 KB   |
| 5.6        | <a href="#">NI Employee Jobs by Industry Section (Unadjusted) June 2009, March 2010 and June 2010</a> | 15.5 KB   |
| 5.7        | <a href="#">Self Employment Jobs in NI by Broad Industry Group (June of Each Year)</a>                | 15.0 KB   |
| 5.8        | <a href="#">Workforce in Employment 1983 – 2010</a>   | 15.0 KB   |
| 5.9        | <a href="#">NI Employee Jobs by 2-digit SIC07 Class – June 2010</a>                                   | 31.5 KB   |

### Other Quarterly Employment Survey Publications available on website

Table 13

| Publication title  | File Size |
|--|-----------|
| <a href="#">Quarterly Employment Survey (QES) Supplement - June 2010</a> | 493 KB    |