



Department of
**Enterprise, Trade
and Investment**
www.detini.gov.uk

Labour Market

Statistics Bulletin

Monthly Labour Market Report

July 2009



Department of Enterprise,
Trade and Investment

Monthly Labour Market Report

July 2009

Crown Copyright

Contents

1

Labour Market

Pages 1-3

2

Labour Force Survey.

Pages 4-6

3

Claimant Count

Pages 7-10

4

Redundancies

Page 11

5

Quarterly
Employment Survey -
QES

Pages 12-14

6

Annual Survey of
Hours and Earnings -
ASHE

Pages 15-16

7

Vacancy Statistics
and Employment &
Training measures

Page 17-18

8

International-
Regional Analysis

Pages 19-20

9

Further Information

Page 21

Labour Market

1

Seasonally adjusted Labour Force Survey (LFS) data for Northern Ireland for the period March - May 2009 estimated increases over the quarter in the number of unemployed and economically inactive persons, while there was a decrease in the number of employed. The seasonally adjusted claimant count in June 2009 increased by 1,600 over the month to 49,500 and the Department was notified of 606 proposed redundancies in the latest reference period and 175 confirmed redundancies in June 2009.

Employment

The number of persons in employment in the period March - May 2009 was estimated at 744,000. This estimate represented a fall of 14,000 over the quarter and a decrease of 51,000 over the year. This was the largest annual decrease since the quarterly series began in 1992. The working age employment rate was estimated at 65.5%, down 1.8 percentage points over the quarter and 5.1 percentage points over the year. NI's working age employment rate remained well below the UK average (72.9%) and was the lowest of the UK regions.

Unemployment

The unemployment rate for the period March - May 2009 was estimated at 6.3%. The latest figure showed an increase of 0.5 percentage points over the quarter and 2.1 percentage points over the year. The number of unemployed persons was estimated at 50,000, up 4,000 over the quarter and 16,000 over the year.

Unadjusted figures show that 28.0% of the unemployed have been unemployed for 1 year or more – a decrease of 1.9 percentage points over the year. They also estimate the unemployment

Northern Ireland Labour Market Summary (seasonally adjusted)

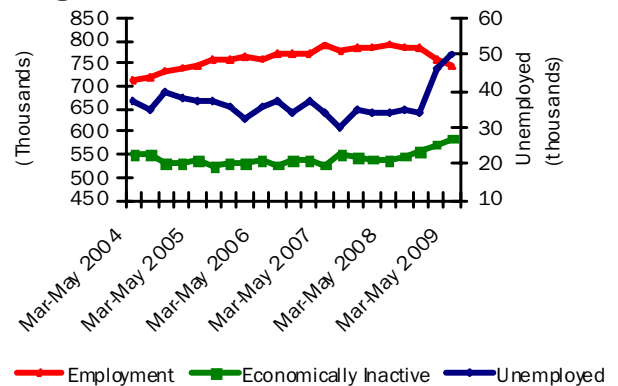
Table 1

| | Period | Estimate | Sampling Variability of estimate | Change over year | Sampling Variability of change |
|---------------------------------------|--------------|----------|----------------------------------|------------------|--------------------------------|
| Employment | Mar-May 2009 | 744,000 | +/-22,000 | -51,000 | +/-27,000 |
| Unemployment | Mar-May 2009 | 50,000 | +/-9,000 | 16,000 | +/-11,000 |
| Economically inactive | Mar-May 2009 | 586,000 | +/-20,000 | 49,000 | +/-25,000 |
| Unemployment rate | Mar-May 2009 | 6.3% | +/-1.2pps | 2.1pps | +/-1.5pps |
| Employment rate ¹ | Mar-May 2009 | 65.5% | +/-1.8pps | -5.1pps | +/-2.2pps |
| Economic inactivity rate ¹ | Mar-May 2009 | 30.0% | +/-1.7pps | 3.8pps | +/-2.1pps |
| Claimant Count | June 2009 | 49,500 | | 23,600 | |

Note: pps = percentage points, ¹ Rates based on working age population (16-59/64), see Section 9 for further information

Seasonally Adjusted Labour Market Summary of Northern Ireland

Figure 1



rate for 18-24 year olds at 16.9% – an increase of 5.7 percentage points over the year.

Economically Inactive

The seasonally adjusted number of economically inactive persons in the period March - May 2009 was estimated at 586,000. This figure has increased by 14,000 over the quarter and by 49,000 over the year.

The working age economic inactivity rate for NI stands at 30.0%. This is significantly higher than the UK average rate (20.9%) and is the highest of the 12 UK regions.

Unadjusted figures show that while 91% of the inactive do not want work, the remaining 9% want employment but do not satisfy the full ILO job search criteria (by actively seeking work and being available to start a job). The number of economically inactive persons that want a job (52,000) is similar to the number

officially classified as unemployed.

Estimates from the LFS have an associated degree of statistical error as they are based on a sample of the population. The annual changes for the main LFS categories of employment, unemployment and economic inactivity were tested for statistical significance. The results showed that the annual change in each of these categories was statistically significant i.e. the recorded change exceeded the variability expected from a sample survey of this size and was likely to reflect a real change (see table 1 and Section 9 for further details).

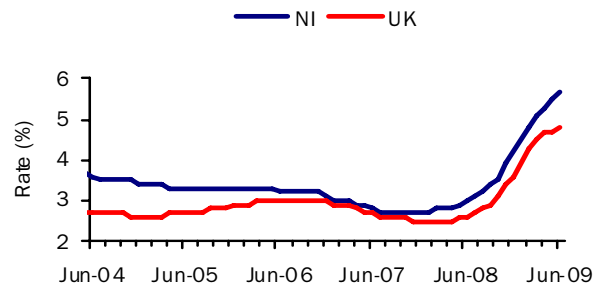
Regional

The seasonally adjusted unemployment rate in NI (6.3%) remained below the UK average rate (7.6%) and was the equal third lowest rate among the UK regions. The NI rate also compared to the European Union rate of 8.6% and the Republic of Ireland rate of 11.1% for April 2009.

Claimant Count

The more recent seasonally adjusted claimant count increased by 1,600 over the month to June 2009 to 49,500 (5.7% of the workforce). The monthly increase was similar to the previous monthly increase (1,800) and was the smallest increase in the last eight months. The percentage increase over the month to June in Northern Ireland (3.3%) was higher than the equivalent UK increase (1.5%). There has been an increase of 91.1% (23,600) since June 2008. This yearly increase was slightly larger than that recorded for the UK (85.0%). Over the last ten months the rise in the unemployment claimant count has been at least 0.2 percentage points each month and currently stands at 5.7% of the workforce. This compares to the UK rate of 4.8%. This month's increase is the sixteenth consecutive monthly increase since the minimum level of 23,500 in February 2008 (and also reached in November 2007).

Seasonally Adjusted Claimant Count Monthly Rates
Figure 2



Claimant count rates for District Council Areas

Figure 3 (unadjusted numbers as a percentage of the resident working age population) show that the highest rates at June 2009 were in Derry (6.6%), Strabane (6.4%) and Limavady (6.2%). Those that showed the highest percentage increase in levels over the year to June 2009 were Magherafelt (222.4%), Dungannon (194.9%) and Cookstown (190.8%), but their unemployment rates were still in the region of the Northern Ireland rate (4.5%).

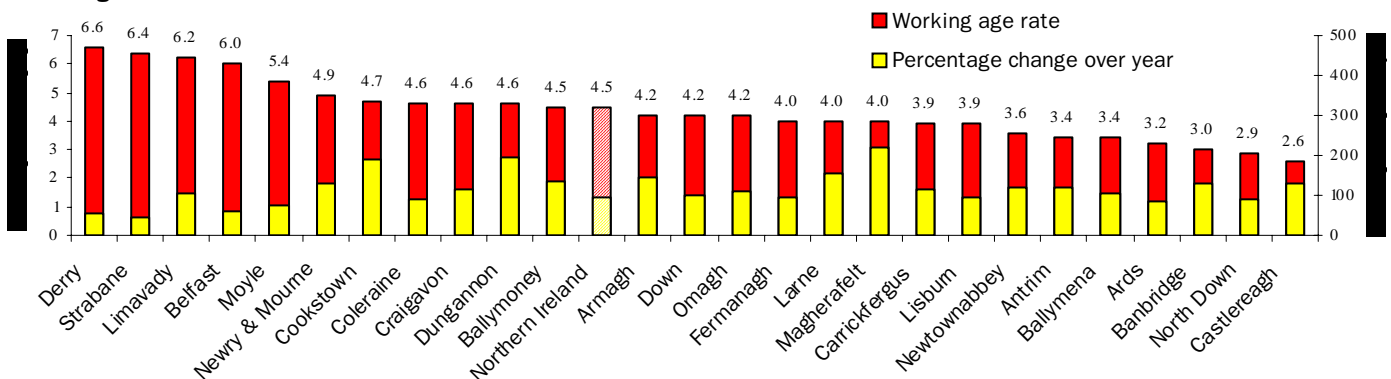
Employment and Training Measures

The Department for Employment and Learning (DEL) provides a number of services and programmes to help jobseekers find work. In September 2008 Steps to Work, the Department's new flexible approach to helping people to find work, was introduced in Northern Ireland and subsumes the main New Deal programmes. Overall, there has been an increase of 101.8% (3,512 persons) to 6,962 over the year to June 2009 in the number of those claimants who are eligible for mandatory participation on Steps to Work. However anyone over 18 years old (or lone parents aged 16 years old or over) who is not working (or working less than 16 hours each week) is eligible. New Deal statistics are currently accessible via the DEL web link below - Steps to Work statistics will be published when data is available.

www.delni.gov.uk/index/statistics-and-research/labour-market/new-deal-statistics.htm

Unadjusted Claimant Count Rates By District Council Area

Figure 3



Redundancies

The Department was notified of 606 proposed redundancies over the period mid June 2009 to mid July 2009. This compares to 59 proposed redundancies notified to the Department in the previous monthly period.

There were 175 confirmed redundancies in the month of June (Figure 5). Over the twelve monthly period there were a total of 4,573 confirmed redundancies, an increase of 185% from the previous year (1,602). The highest number of confirmed redundancies took place in Belfast District Council area which had 19.3% (882) of all redundancies over the year.

Over the twelve monthly period there were a total of 5,884 proposed redundancies, an increase of 94% from the previous year (3,032).

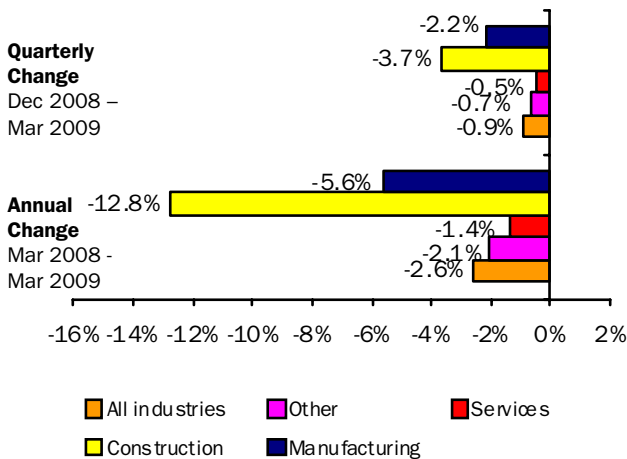
Since the start of 2009 to mid July there were a total of 3,918 proposed redundancies. Note that since all proposed redundancies do not actually take place, the confirmed total provides a better indication of real job losses.

Quarterly Employment Survey

The QES provides an estimate of the number of jobs (rather than persons in employment) and is the preferred measure of change in employee jobs. The estimated seasonally adjusted employee jobs total in Northern Ireland at March 2009 was 715,050. This represents a decrease of 6,220 over the quarter and a decrease of 19,030 over the year.

Annual and Quarterly changes in employee jobs (seasonally adjusted)

Figure 4

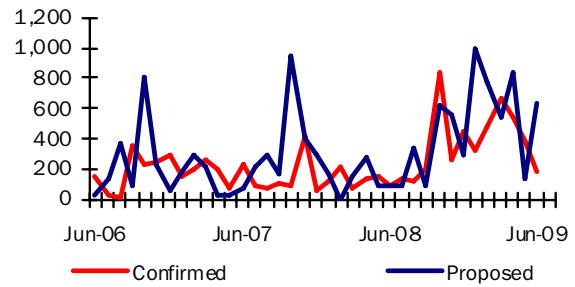


The seasonally adjusted quarterly change consisted of decreases in the Service sector (-2,770), Manufacturing (-1,790) and Construction (-1,520) sectors.

Confirmed and Proposed Redundancies

June 06 - June 09

Figure 5

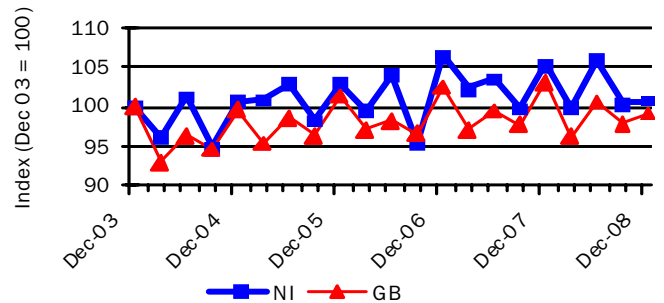


Hours Worked

The total workforce hours worked per week in Northern Ireland in December 2008 was estimated at 26.0 million hours, representing a decrease of 4.4% over the year (similar to the decrease experienced in GB of 3.9%). Between December 2003 and December 2008, NI's total workforce hours worked per week increased marginally by 0.8%. This compared with a 0.9% decrease in GB (Figure 6). In the three months to April 2009, the average actual weekly hours worked in NI was 33.8 hours, compared with 32.0 hours in the UK.

Index of total workforce hours worked per week, NI & GB

Figure 6



Source: Employment, Earnings and Productivity Division, ONS

Annual Survey of Hours and Earnings (ASHE)

Earnings results for April 2008, which were released on 14th November 2008, show that yearly growth in median gross weekly earnings for all employees (i.e. both full- and part-time) in NI was 5.1% (to £346.5) compared to 3.3% in the UK (to £388.4). NI full-time employees' gross weekly earnings in April 2008 were £417.6, which was approximately 87% of the figure in the UK (£478.6). NI full-time earnings increased by 4.3% over the period, which was relatively similar to the increase in the UK (4.6%).

Full-time private sector gross weekly earnings in NI were £377.1, or 82.0% of the figure in the UK (compared to 82.7% in April 2007), reflecting a slight widening of the NI/UK private sector pay gap.

Labour Force Survey

2

Background

The Labour Force Survey (LFS) is a sample survey carried out by interviewing individuals about their personal circumstances and work. It provides a rich source of information on the labour force using internationally agreed definitions. However, the estimates from it are subject to sampling error and care should be taken when making inferences from them (see section 9 for details).

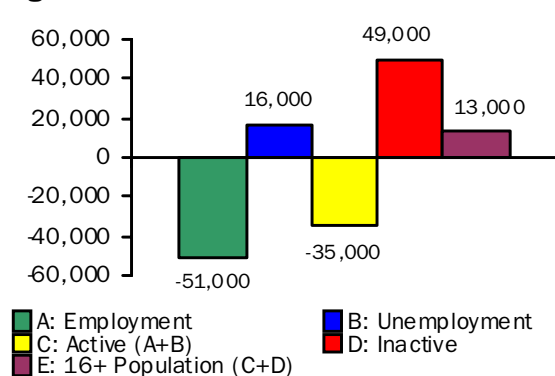
Labour Market Summary (seasonally adjusted)

The latest seasonally adjusted Labour Force Survey estimates for March - May 2009 (see Table 2) record the unemployment rate at 6.3% (50,000 persons), up 0.5 percentage points from the previous quarter. Employment was estimated to have fallen by 14,000 (1.8%) over the quarter to 744,000.

Labour Market change over the year

In the year to March - May 2009 (see Figure 7), LFS figures show a fall of 51,000 in total employment and an increase of 16,000 in unemployment, leading to a fall of 35,000 in the economically active population (figures may not sum due to rounding). The number economically inactive rose by 49,000 over the year.

**Labour Market Structure
Change over the year
Figure 7**



Employment

Latest seasonally adjusted estimates show that there were 744,000 persons in employment, which represents a fall of 6.4% (51,000 persons) over the year. Of the total, 54% (399,000) were male and 46% (345,000) were female.

There was a decrease of 7.1% (-31,000) in the estimate for male employment and a fall of 5.6% (-20,000) in female employment over the year.

Economic Inactivity

The number of economically inactive persons in the period March - May 2009 was estimated at 586,000. This figure includes those people that are past retirement age and are unlikely to re-engage with the labour market. Therefore it is the economically inactive of working age that are of most interest to labour market analysts. At March - May 2009 there were an estimated 328,000 economically inactive people of working age in NI. Of the total, 43% (140,000) were male and 57% (188,000) were female.

To provide a more detailed analysis, the results below are unadjusted for seasonality, unless otherwise stated.

Unadjusted figures show that 85% of the economically inactive of working age do not want a job, while the remaining 15% want work, but are not actively seeking or available to start work.

**Economically Inactive of Working Age
Reason for not wanting work
Figure 8**

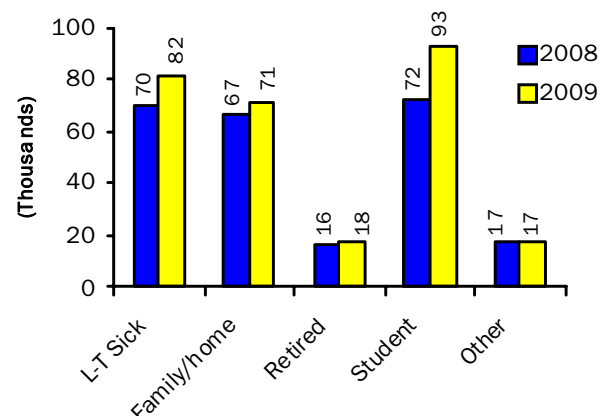


Figure 8 shows the reason given by these people for not wanting work. The largest categories were students (93,000), the long-term sick (82,000), and those looking after family/home (71,000). Among these categories, the largest change over the year occurred in those who were students (+20,000 or 28%).

Labour Market Structure – Seasonally adjusted
Table 2

(Thousands)

| | Total aged 16 and over | Total persons of working age 16-59/64 | All aged 16+ | | | | All working age 16-59/64 | | |
|--------------------------|------------------------|---------------------------------------|---------------------------|---------------------|------------|-----------------------|--------------------------|----------------------------|------------------------------|
| | | | Total economically active | Total in employment | Unemployed | Economically inactive | Unemployment rate (%) | Activity rate 16-59/64 (%) | Employment rate (%) 16-59/64 |
| | A | B | C | D | E | F | G | H | I |
| ALL PERSONS | | | | | | | | | |
| Mar-May 2006 | 1,334 | 1,065 | 798 | 762 | 36 | 537 | 4.5% | 72.6% | 69.3% |
| Mar -May 2007 | 1,352 | 1,078 | 824 | 789 | 34 | 528 | 4.2% | 73.9% | 70.8% |
| Mar -May 2008 | 1,367 | 1,086 | 829 | 795 | 34 | 537 | 4.1% | 73.8% | 70.6% |
| Jun – Aug 2008 | 1,370 | 1,088 | 823 | 788 | 35 | 547 | 4.3% | 73.3% | 70.1% |
| Sep-Nov 2008 | 1,373 | 1,089 | 817 | 783 | 34 | 556 | 4.2% | 72.8% | 69.7% |
| Dec-Feb 2009 | 1,377 | 1,091 | 804 | 758 | 46 | 573 | 5.7% | 71.5% | 67.3% |
| Mar-May 2009 | 1,380 | 1,093 | 794 | 744 | 50 | 586 | 6.3% | 70.0% | 65.5% |
| Change on Quarter | 3 | 2 | -10 | -14 | 4 | 14 | 0.5 | -1.5 | -1.8 |
| Change on Year | 13 | 7 | -35 | -51 | 16 | 49 | 2.1 | -3.8 | -5.1 |
| MALES | | | | | | | | | |
| Mar-May 2006 | 645 | 549 | 439 | 414 | 25 | 206 | 5.6% | 78.3% | 73.8% |
| Mar -May 2007 | 654 | 555 | 449 | 428 | 20 | 206 | 4.6% | 79.0% | 75.3% |
| Mar -May 2008 | 661 | 560 | 454 | 430 | 24 | 208 | 5.3% | 79.4% | 75.1% |
| Jun – Aug 2008 | 663 | 560 | 450 | 426 | 24 | 213 | 5.3% | 78.6% | 74.3% |
| Sep-Nov 2008 | 665 | 561 | 448 | 422 | 27 | 217 | 5.9% | 78.2% | 73.5% |
| Dec-Feb 2009 | 667 | 562 | 438 | 406 | 32 | 229 | 7.3% | 76.2% | 70.5% |
| Mar-May 2009 | 669 | 563 | 434 | 399 | 35 | 234 | 8.1% | 75.1% | 68.9% |
| FEMALES | | | | | | | | | |
| Mar-May 2006 | 689 | 516 | 358 | 348 | 11 | 330 | 3.0% | 66.5% | 64.4% |
| Mar -May 2007 | 698 | 522 | 375 | 361 | 14 | 323 | 3.7% | 68.6% | 66.0% |
| Mar -May 2008 | 705 | 526 | 376 | 365 | 10 | 329 | 2.7% | 67.7% | 65.8% |
| Jun – Aug 2008 | 707 | 527 | 373 | 362 | 11 | 334 | 3.0% | 67.6% | 65.5% |
| Sep-Nov 2008 | 708 | 528 | 369 | 361 | 8 | 339 | 2.1% | 67.0% | 65.6% |
| Dec-Feb 2009 | 710 | 529 | 366 | 352 | 14 | 344 | 3.8% | 66.5% | 64.0% |
| Mar-May 2009 | 711 | 530 | 360 | 345 | 15 | 352 | 4.1% | 64.6% | 61.9% |

Relationship between columns: A=C+F; C=D+E; G=E/C, H=economically active of working age/total population of working age, I=in employment of working age/total population of working age, * **A and B are underlying population estimates and are therefore not seasonally adjusted.** Figures may not sum due to rounding.

Labour Market Structure – Sample of data available on website

Table 3

| Table Name | Description | File Size |
|------------|--|-----------|
| 2.1a | Labour Market Structure - Seasonally Adjusted | 22KB |
| 2.1b | Labour Market Structure | 20KB |
| 2.2 | Economic Activity by Age | 19KB |
| 2.3 | Economic Activity Rates by Age | 19KB |
| 2.4a | Economically Inactive Who Want Work | 20KB |
| 2.4b | Economically Inactive Who Do Not Want Work | 18KB |
| 2.5 | Economic Inactivity by Age | 18KB |
| 2.6 | Employment by Category | 18KB |
| 2.7 | Actual Weekly Hours of Work | 17KB |
| 2.8 | Employment by Age | 18KB |
| 2.9 | Unemployment by Age | 17KB |
| 2.10 | Unemployment by Duration | 18KB |
| 2.11 | International Comparisons of Employment and Unemployment | 23KB |
| | Notes and Definitions | 16KB |

Other Labour Force Survey Publications available on website

Table 4

| Publication title | File Size |
|---|-----------|
| LFS Labour Market Statistics (Mar-May 2009) | 98 KB |
| Labour Force Survey (LFS) Local Area Database 2007 | 386 KB |
| LFS Historical Supplement 2008 | 418 KB |
| Women in Northern Ireland – September 2008 | 203 KB |
| LFS Quarterly Supplement – January - March 2009 | 369 KB |
| LFS Special Feature - Graduates (Quarter 4 2008) | 56 KB |
| LFS Special Feature – Households in NI (Quarter 2 2008) | 200 KB |
| LFS Special Feature – Self Employed (Quarter 2 2008) | 62 KB |
| LFS Special Feature – Health and Work (Quarter 1 2008) | 56 KB |
| LFS Special Feature - Home Workers (Quarter 1 2009) | 59 KB |
| LFS Reweighted Back Series 1992-2008 (please enable macros) | 863 KB |
| LFS Historical Data 1995-2008 (please enable macros) | 312 KB |
| LFS Historical Data 1984-1991 | 76 KB |

Claimant Count

3

Unadjusted Claimant Count

The claimant count in NI at June 2009 was 49,139 (5.6% of the workforce), an increase of 2.3% (1,082) over the previous month. There was an increase of 93.8% (23,779) over the year and the rate increased by 2.7 percentage points. Five years ago the total was 30,045 (3.6%). (The seasonally adjusted claimant count increased by 1,600 over the month.)

Youth Claimants

16,752 under 25's (34.1% of all claimants) were claiming benefits in June 2009, an increase of 4.3% (691 claimants) over the month and an increase of 90.9% (7,979) over the year. Youth claimants represent 1.9% of the workforce.

Long-term Claimants

At June 2009, 6,246 (12.7% of all claimants) were claiming benefit for a year or more, an increase of 4.4% (261 claimants) over the month and an increase of 55.9% (2,239) over the year. Long-term claimants represent 0.7% of the workforce.

Flows out from Job Seekers Allowance

The success rate of job seekers leaving the count to obtain employment in May 2009 increased by 2.7 percentage points (from 35.8% to 38.5%) since the same time last year. Of the 7,400 flows from the count in May 2009, 2,849 found employment compared to 1,740 of the 4,864 claimants who left the count in May 2008. This compares to 35.8% three months ago, and 42.2% five years ago.

In the period from May 2008 to May 2009 the highest proportion (47.5%) of persons leaving JSA to find employment was in November 2008, while in December 2008 the proportion finding employment was at its lowest (22.9%). The highest proportion (11.6%) of persons leaving JSA to enter education or training occurred in June 2008. Those who left JSA to claim other benefits varied between 3.9% and 10.3% in the period. Those who left JSA because they failed to sign peaked at 48.6% in December 2008.

Flows in to Job Seekers Allowance

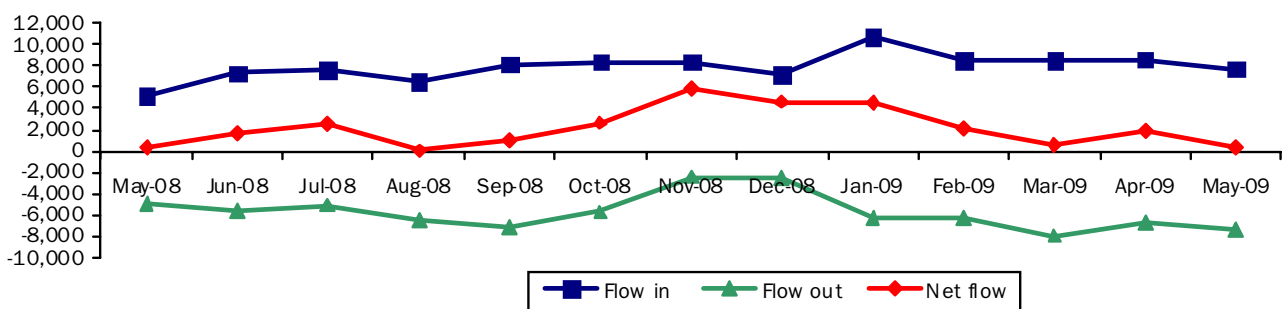
Of the 4,864 claimants who left the count in May 2008, 33.5% returned to the count within 3 months, 11.8% returned after 3-6 months and a further 12.3% returned after 6-12 months giving a total of 57.6% of those who left the count in May 2008 returned to claiming JSA within one year. This compares to 51.4% of leavers in May 2007 (1 year previously) and 48.9% of leavers in May 2003 (5 years previously) returning within one year.

Net Flow

Between May 2008 and May 2009 there was a net flow onto Job Seekers each month, for the entire 13 month period. Net flows on to Job Seekers in November (5,923), December 2008 (4,628) and January 2009 (4,538) were considerably higher than any other months in this period. In the latest period a net flow of 312 on to Job Seekers occurred in May 2009 which was the lowest net flow since August 2008 (19), when the lowest net flow in the period occurred.

Flows in and out from JSA

Figure 9

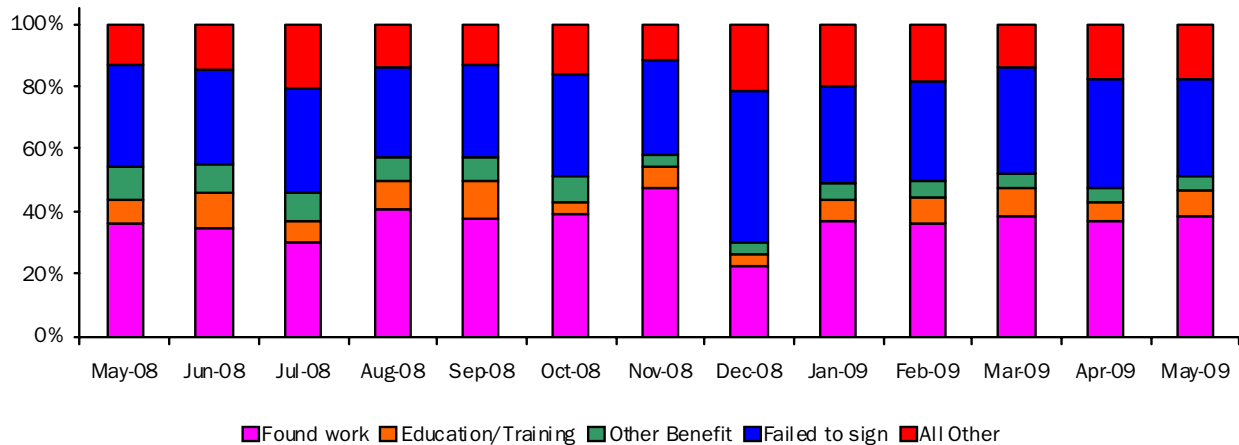


Claimant Count by District Council Area – June 2009
Number, Rate and % change over month and year (including jobs density indicator at 2007*)
Table 5

| District | Number of Claimants | | | % Of Working Age | | | Change over month | | Change over Year | | Jobs Density |
|-----------------|---------------------|---------------|---------------|------------------|------------|------------|-------------------|------------|------------------|-------------|--------------|
| | Males | Females | All | Males | Females | All | Number | % | Number | % | Indicator* |
| Antrim | 883 | 235 | 1,118 | 5.1 | 1.5 | 3.4 | -9 | -0.8 | 605 | 117.9 | 0.93 |
| Ards | 1,172 | 334 | 1,506 | 4.7 | 1.5 | 3.2 | -17 | -1.1 | 682 | 82.8 | 0.44 |
| Armagh | 1,140 | 337 | 1,477 | 6.4 | 2.0 | 4.2 | 58 | 4.1 | 869 | 142.9 | 0.71 |
| Ballymena | 1,002 | 299 | 1,301 | 5.1 | 1.7 | 3.4 | 24 | 1.9 | 663 | 103.9 | 0.99 |
| Ballymoney | 649 | 172 | 821 | 6.7 | 2.0 | 4.5 | -14 | -1.7 | 471 | 134.6 | 0.51 |
| Banbridge | 676 | 189 | 865 | 4.4 | 1.4 | 3.0 | 25 | 3.0 | 493 | 132.5 | 0.51 |
| Belfast | 8,011 | 1,967 | 9,978 | 9.6 | 2.3 | 6.0 | 188 | 1.9 | 3,804 | 61.6 | 1.36 |
| Carrickfergus | 748 | 221 | 969 | 5.9 | 1.8 | 3.9 | 53 | 5.8 | 515 | 113.4 | 0.39 |
| Castlereagh | 795 | 213 | 1,008 | 4.0 | 1.1 | 2.6 | 18 | 1.8 | 566 | 128.1 | 0.74 |
| Coleraine | 1,242 | 345 | 1,587 | 7.0 | 2.1 | 4.6 | 29 | 1.9 | 760 | 91.9 | 0.80 |
| Cookstown | 823 | 224 | 1,047 | 7.1 | 2.1 | 4.7 | 23 | 2.2 | 687 | 190.8 | 0.66 |
| Craigavon | 1,997 | 534 | 2,531 | 6.9 | 2.0 | 4.6 | 64 | 2.6 | 1,367 | 117.4 | 0.79 |
| Derry | 3,546 | 1,003 | 4,549 | 10.2 | 3.0 | 6.6 | 154 | 3.5 | 1,641 | 56.4 | 0.72 |
| Down | 1,459 | 332 | 1,791 | 6.5 | 1.6 | 4.2 | 24 | 1.4 | 890 | 98.8 | 0.54 |
| Dungannon | 1,180 | 371 | 1,551 | 6.5 | 2.3 | 4.6 | 18 | 1.2 | 1,025 | 194.9 | 0.78 |
| Fermanagh | 1,204 | 328 | 1,532 | 5.9 | 1.9 | 4.0 | 21 | 1.4 | 751 | 96.2 | 0.73 |
| Larne | 614 | 167 | 781 | 6.1 | 1.8 | 4.0 | 5 | 0.6 | 475 | 155.2 | 0.54 |
| Limavady | 1,088 | 273 | 1,361 | 9.1 | 2.7 | 6.2 | 4 | 0.3 | 705 | 107.5 | 0.57 |
| Lisburn | 2,117 | 613 | 2,730 | 6.0 | 1.8 | 3.9 | 85 | 3.2 | 1,348 | 97.5 | 0.69 |
| Magherafelt | 850 | 230 | 1,080 | 5.9 | 1.8 | 4.0 | 27 | 2.6 | 745 | 222.4 | 0.67 |
| Moyle | 426 | 123 | 549 | 8.1 | 2.5 | 5.4 | -17 | -3.0 | 239 | 77.1 | 0.47 |
| Newry & Mourne | 2,353 | 531 | 2,884 | 7.7 | 1.9 | 4.9 | 113 | 4.1 | 1,641 | 132.0 | 0.70 |
| Newtownabbey | 1,418 | 393 | 1,811 | 5.5 | 1.6 | 3.6 | 32 | 1.8 | 989 | 120.3 | 0.70 |
| North Down | 1,049 | 350 | 1,399 | 4.2 | 1.5 | 2.9 | 68 | 5.1 | 667 | 91.1 | 0.54 |
| Omagh | 1,074 | 292 | 1,366 | 6.3 | 1.9 | 4.2 | 45 | 3.4 | 710 | 108.2 | 0.72 |
| Strabane | 1,231 | 316 | 1,547 | 9.6 | 2.8 | 6.4 | 61 | 4.1 | 471 | 43.8 | 0.48 |
| NI TOTAL | 38,747 | 10,392 | 49,139 | 6.9 | 2.0 | 4.5 | 1,082 | 2.3 | 23,779 | 93.8 | 0.78 |

* Data relates to 2007. Jobs Density = total number of jobs in an area divided by the resident population of working age in the area

Claimant spells ended by destination
Figure 10



Occupation Data

Publication of monthly claimant count figures by occupation had been deferred from March 2002, due to the switch in occupational coding in April 2002 from SOC 90 to SOC 2000. Work has now been completed to produce and validate the figures, and the latest results for June 09 are shown below.

Note that the new SOC 2000 data cannot be compared directly with the previous SOC 90 data. A variety of claimant count data by occupation back to January 2005 is available on Nomis® .

At June 2009, 30.3% (14,745) of all claimants defined their usual (or previous) occupation as an Elementary Occupation. Elementary Occupations includes elementary agricultural, construction, process plant, goods storage, administrative, personal services, cleaning, security and sales occupations. A further 20.7% (10,075) gave their

usual occupation as working in the Skilled Trades. These two groups account for about one half of all claimants in June 2009. The smallest occupation group, with 2.5% (1,210) of all claimants, was Managers and Senior Officials.

Overall the NI claimant count (computerised claims only) increased by 2.3% over the month to June 2009. Eight out of the nine occupational groups showed an increase in levels with the largest increase occurring in Sales and Customer Service Occupations which increased by 245 (4.4%), followed by Professional Occupations which increased by 225 (20.5%) and Administrative and Secretarial Occupations which also increased by 195 (5.4%). The only occupational group that showed a decrease in levels was Skilled Trade Occupations which decreased by 80 (0.8%).

Claimant Count (unadjusted) by Usual Occupation – June 2009 (Computerised claims only)
Table 6

| Occupational Groups (Usual Occupation) | June 2009 | | Change over month | |
|--|---------------------|----------------|---------------------|------------|
| | Number of Claimants | % of Claimants | Number of claimants | % change |
| Managers and Senior Officials | 1,210 | 2.5 | 40 | 3.4 |
| Professional Occupations | 1,325 | 2.7 | 225 | 20.5 |
| Associate Professional and Technical Occupations | 2,180 | 4.5 | 185 | 9.3 |
| Administrative and Secretarial Occupations | 3,825 | 7.8 | 195 | 5.4 |
| Skilled Trade Occupations | 10,075 | 20.7 | -80 | -0.8 |
| Personal Service Occupations | 2,025 | 4.2 | 80 | 4.1 |
| Sales and Customer Service Occupations | 5,805 | 11.9 | 245 | 4.4 |
| Process, Plant and Machine Operatives | 7,490 | 15.4 | 15 | 0.2 |
| Elementary Occupations | 14,745 | 30.3 | 180 | 1.2 |
| Not Known | 65 | 0.1 | 0 | 0.0 |
| NI Total | 48,740 | 100.0 | 1,080 | 2.3 |

Claimant Count -Sample of data available on website:

Table 7

| Table Name | Description | File Size |
|------------|--|-----------|
| Table 3.1 | Seasonally Adjusted Claimant Count | 17.5KB |
| Table 3.2 | Total Claimant Count | 16.0KB |
| Table 3.3 | Claimant Count Trends – Seasonally Adjusted Claimant Count | 18.0KB |
| Table 3.4 | Claimant Count Trends – Total Claimant Count | 17.0KB |
| Table 3.5 | Claimant Count Trends – Long-Term Claimant Count | 16.0KB |
| Table 3.6 | Claimant Count Trends- Youth Claimant Count | 14.5KB |
| Table 3.7 | Claimant Count by Travel-to-Work-Area | 19.5KB |
| Table 3.8 | Claimant Count by District Council Area | 21.0KB |
| Table 3.9 | Claimant Count by Parliamentary Constituency Area | 20.0KB |
| Table 3.10 | Claimant Count by NUTSiii Area | 18.5KB |
| Table 3.11 | Claimant Count by Usual Occupation | 17.0KB |
| Table 3.12 | Outflows by Destination (including percentage recycled) | 21.5KB |
| Table 3.13 | Total Annual Outflows by Destination | 20.0KB |
| Table 3.14 | Recycling of Claimants by District Council Area | 19.0KB |
| Table 3.15 | Claimant Count by Ward | 81.0KB |

Redundancies

4

There were 4,573 confirmed redundancies over the year to 30th June 2009, an increase of 185% compared to the same period in the previous year (1,602). Of these, 175 confirmed redundancies took place during the calendar month of June 2009 and 380 in the previous month of May 2009. This compares to 94 in June 2008 (one year ago).

Table 8 shows the distribution of these confirmed redundancies by District Council area.

The largest number of redundancies occurred in Belfast (882), Limavady (753), Derry (395) and Craigavon (365) District Council areas.

Confirmed redundancies by District Council in year to 30 June 2009

Table 8

| District Council Area | Total |
|-----------------------|-------|
| Antrim | 34 |
| Ards | 34 |
| Armagh | 0 |
| Ballymena | 55 |
| Ballymoney | 205 |
| Banbridge | 51 |
| Belfast | 882 |
| Carrickfergus | 163 |
| Castlereagh | 81 |
| Coleraine | 154 |
| Cookstown | 108 |
| Craigavon | 365 |
| Derry | 392 |
| Down | 2 |
| Dungannon | 258 |
| Fermanagh | 24 |
| Larne | 267 |
| Limavady | 753 |
| Lisburn | 134 |
| Magherafelt | 68 |
| Moyle | 1 |
| Newry & Mourne | 222 |
| Newtownabbey | 248 |
| North Down | 36 |
| Omagh | 36 |
| Strabane | 0 |
| N.Ireland | 4,573 |

Of these 4,573 confirmed redundancies, 3,415 or 75% were in the Manufacturing sector, with 1,419 redundancies (31% of all redundancies) occurring in the Manufacture of Electrical and Optical Equipment.

Altogether there have been 2,052 outstanding redundancies notified that have yet to take place compared with 1,525 this time one year ago (an increase of 35%).

Redundancies – Sample of Data Available on Website

Table 9

| Regional Redundancy data | File size |
|--|-----------|
| District Council (Jan 2000 – date) | 33.0KB |
| Parliamentary Constituency (Jan 2000-date) | 29.0KB |
| Travel to Work Area (Jan 2000 – date) | 29.0KB |
| Job Centre Area (Jan 1996 – Jun 2003) | 68.5KB |

| Industrial Sector | File size |
|--|-----------|
| Standard Industrial Classification (Jan 2000 – date) | 70.0KB |

Quarterly Employment Survey

5

Seasonally Adjusted

The March 2009 seasonally adjusted employee jobs figure stands at 715,050.

This represents a seasonally adjusted decrease of 0.9% (or 6,220 jobs) from the revised December 2008 estimate of 721,270.

Over the quarter seasonally adjusted employee jobs decreased in the Service Sector by 0.5% (2,770 jobs) while employee jobs in the Construction Sector fell by 3.7% (1,520 jobs) and the number of employee jobs in the Manufacturing Sector fell by 2.2% (1,790 jobs),

Unadjusted

The March 2009 seasonally unadjusted figure stands at 713,920.

This represents a decrease of 1.7% (or 12,680 jobs) from December 2008 and a decrease of 2.6% (19,220 jobs) in the past year.

Over the year, March 2008 to March 2009, the unadjusted employee jobs figure for Construction decreased by 12.9% (5,800 jobs), Manufacturing employee jobs decreased by 5.7% (4,740 jobs) while employee jobs in the Service Sector decreased by 1.4% (8,230 jobs).

Manufacturing Employee Jobs

The level of jobs in the Manufacturing sector in both NI and GB has declined significantly over the past 10 years.

NI manufacturing jobs recorded a marked decline between 1999 and 2006, with the figure for 2006 falling to 82% of the 1999 figure. Manufacturing employee jobs in NI were fairly stable between 2005 and 2008, with the 2008 figure remaining at 81% of the 1999 level. However manufacturing jobs have fallen again in 2009 to 76% of their 1999 level.

Manufacturing jobs in GB have been in sharp decline from 1999 and the 2009 estimate stands at 68% of the 1999 level.

Changes in the Structure of Manufacturing Jobs (NI)

Over the period 1999-2009, Manufacturing jobs in NI decreased by 24,280, with 17 of the 24 manufacturing divisions recording a decrease. The largest decrease occurred in the Manufacture of Wearing Apparel, with a fall of 11,530 jobs. There were 5,970 fewer jobs in the Manufacture of Textiles, 2,700 fewer in the Manufacture of Computer, Electronic and Optical Products, 1,080 fewer in the Manufacture of Other Transport Equipment and 920 fewer in the Manufacture of Motor Vehicles, Trailers and Semi-Trailers.

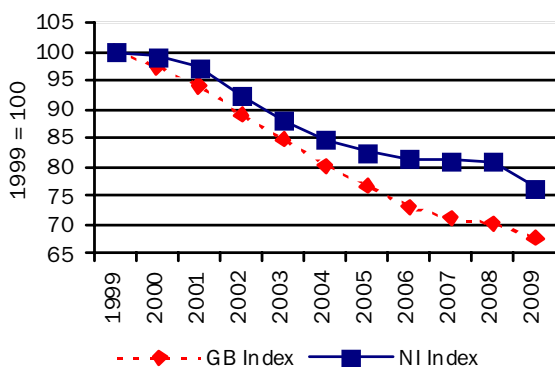
However these decreases were somewhat offset by an increase in the Manufacture of Fabricated Metal Products, except Machinery and Equipment (+1,100), in the Manufacture of Basic Pharmaceutical Products And Pharmaceutical Preparations (+320), in the Manufacture of Wood And Of Products Of Wood And Cork, Except Furniture; Manufacture Of Articles Of Straw And Plaiting Materials (+280), in the Manufacture of Electrical Equipment (+220), and in the Repair and Installation Of Machinery And Equipment (+110 jobs).

The large decline in the Manufacture of Textiles and Wearing Apparel sectors has impacted on the structure of Northern Ireland Manufacturing jobs. In 1999 19% of Manufacturing jobs were located in the Textiles and Wearing Apparel sectors; by 2009 this had fallen to 3%.

Manufacturing jobs for NI & GB

indexed (March of each year)

Figure 11



Quarterly Employment Survey
Northern Ireland Seasonally Adjusted Employee Jobs* March 2009
Table 10

| | | | | % change in total | |
|---------------------------|----------------|----------------|----------------|--------------------|-----------------|
| | Males | Females | All persons | since last quarter | since last year |
| Manufacturing | 61,950 | 17,020 | 78,970 | -2.2 | -5.6 |
| Construction ¹ | 34,970 | 4,570 | 39,550 | -3.7 | -12.8 |
| Services | 228,730 | 346,890 | 575,620 | -0.5 | -1.4 |
| Other ² | 18,260 | 2,650 | 20,910 | -0.7 | -2.1 |
| Total | 343,910 | 371,140 | 715,050 | -0.9 | -2.6 |

¹ Figures for females in the construction industry are not seasonally adjusted

² Covers Industry Sections A, B, D and E which have not been seasonally adjusted

* Figures are rounded to the nearest 10 and may not sum due to rounding

Northern Ireland Employee Jobs* - Seasonally Adjusted Series
Table 11

| | | Manufacturing | Construction ¹ | Services | Other Industries ² | All Industries |
|------|-----------|---------------|---------------------------|----------|-------------------------------|----------------|
| 2003 | March | 90,790 | 35,940 | 521,070 | 21,900 | 669,690 |
| | June | 89,230 | 36,410 | 526,200 | 22,440 | 674,290 |
| | September | 88,710 | 36,430 | 528,370 | 22,380 | 675,890 |
| | December | 87,770 | 36,640 | 530,520 | 22,640 | 677,560 |
| 2004 | March | 87,320 | 37,190 | 533,910 | 22,610 | 681,030 |
| | June | 86,320 | 37,200 | 535,790 | 22,290 | 681,610 |
| | September | 85,900 | 37,290 | 541,410 | 22,480 | 687,080 |
| | December | 85,490 | 37,420 | 544,710 | 22,770 | 690,390 |
| 2005 | March | 85,170 | 37,870 | 550,960 | 22,430 | 696,430 |
| | June | 84,290 | 38,750 | 551,880 | 21,130 | 696,050 |
| | September | 84,150 | 39,330 | 553,870 | 21,310 | 698,660 |
| | December | 83,780 | 40,990 | 557,470 | 21,390 | 703,630 |
| 2006 | March | 83,990 | 41,940 | 559,080 | 21,390 | 706,400 |
| | June | 83,690 | 42,300 | 560,120 | 20,830 | 706,940 |
| | September | 83,820 | 42,700 | 562,740 | 20,910 | 710,170 |
| | December | 84,010 | 42,970 | 564,720 | 20,990 | 712,690 |
| 2007 | March | 83,850 | 43,630 | 566,890 | 21,050 | 715,430 |
| | June | 84,100 | 44,720 | 571,140 | 20,890 | 720,860 |
| | September | 83,890 | 45,300 | 575,170 | 21,070 | 725,440 |
| | December | 83,400 | 45,820 | 580,360 | 21,450 | 731,030 |
| 2008 | March | 83,630 | 45,330 | 583,750 | 21,370 | 734,080 |
| | June | 83,270 | 44,290 | 585,290 | 21,560 | 734,410 |
| | September | 81,950 | 42,850 | 581,350 | 21,630 | 727,770 |
| | December | 80,760 | 41,070 | 578,380 | 21,050 | 721,270 |
| 2009 | March | 78,970 | 39,550 | 575,620 | 20,910 | 715,050 |

¹ Figures for females in the construction industry are not seasonally adjusted

² Covers Industry Sections A, B, D and E which have not been seasonally adjusted

* Figures are rounded to the nearest 10 and may not sum due to rounding

Quarterly Employment Survey (QES) – Sample of data available on website

The Northern Ireland Quarterly Employment Survey Table 12

| Table Name | Description | File Size |
|------------|--|-----------|
| 5.1 | NI Employee Jobs - Seasonally Adjusted March 2009 | 15.5 KB |
| 5.2 | NI Employee Jobs - Seasonally Adjusted 1998 – 2009 | 15.5 KB |
| 5.3 | NI Employee Jobs - Unadjusted 1998 – 2009 | 15.5 KB |
| 5.4 | NI Employee Jobs (Unadjusted) by Industry Section – March 2009 | 15.5 KB |
| 5.5 | NI Public Sector Jobs (Unadjusted) – March 2009 | 13.5 KB |
| 5.6 | NI Employee Jobs by Industry Section (Unadjusted) March 2008, December 2008 and March 2009 | 15.5 KB |
| 5.7 | Self Employment Jobs in NI by Broad Industry Group (June of Each Year) | 15.0 KB |
| 5.8 | Workforce in Employment 1983 – 2008 | 15.0 KB |
| 5.9 | NI Employee Jobs by 2-digit SIC07 Class – March 2009 | 31.5 KB |

Other Quarterly Employment Survey Publications available on website Table 13

| Publication title | File Size |
|---|-----------|
| Quarterly Employment Survey (QES) Supplement - March 2009 | 493 KB |

Annual Survey of Hours and Earnings

6

The Annual Survey of Hours and Earnings (ASHE) provides information on employees' hourly, weekly and annual earnings by gender and working pattern. It has been designed by the Office for National Statistics and is carried out in Northern Ireland by statisticians within DETI. Both median and mean results are reported by ASHE, where the mean is the arithmetic average while the median is the value below which 50 per cent of employees fall. The median is often preferred for earnings data as it is influenced less by extreme values and because of the skewed distribution of earnings data.

The median gross weekly earnings for all (i.e. both full- and part-time) employees in NI in 2008 was £346.5, some 11% lower than the UK (£388.4). This represented a growth in NI median earnings for all employees of 5.1% over the year to April 2008, compared to growth in the UK of 3.3%.

NI full-time employees' median gross weekly earnings in April 2008 were £417.6, which was approximately 87% of the figure in the UK (£478.6). NI full-time earnings increased by 4.3% over the period, which was relatively similar to the increase in the UK (4.6%). The median gross weekly part-time earnings in NI at April 2008 was £150.3, over 2% higher than the figure in the UK (£147.0). As such, growth over the year was higher in NI (6.7%) than in the UK (2.3%) for part-time employees.

Slower growth in median private sector weekly earnings in NI (3.8%) compared to the UK (4.6%) has resulted in a slight widening of the NI/UK private sector pay gap. Full-time private sector gross weekly earnings in NI at April 2008 (£377.1) were some 82.0% of the figure in the UK, compared to 82.7% in the previous year.

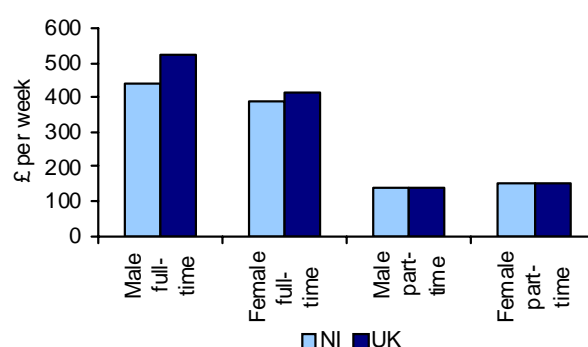
The gender pay gap has been relatively unchanged in NI over the period 2006-2008. Female full-time median hourly earnings excluding overtime were slightly less than male earnings (97.4% in NI compared to 87.2% in the UK) at April 2008. It should be noted that gender pay differences continue to exist for various occupational and industry groupings in NI, as evidenced by weekly and annual earnings trends.

Please note, changes in NI earnings over the year and relative to the UK are influenced by a range of factors including the timing of pay settlements, the

extent of overtime, and changes in the composition of the workforce. As ASHE is a sample survey, results are also subject to an associated level of sampling error. Further information is available at: <http://www.detini.gov.uk/cgi-bin/downdoc?id=4042>

Median gross weekly earnings by full-/part-time and gender, April 2008

Figure 12



Median and mean gross weekly earnings 2005-08

Table 14

| £ per week | Median | | | Mean | | |
|---|-----------|-----------|-------|-----------|-----------|-------|
| | Full-time | Part-time | All | Full-time | Part-time | All |
| April 2008 | | | | | | |
| Men | 438.8 | 141.2 | 404.3 | 520.9 | 216.9 | 480.0 |
| Women | 385.5 | 152.7 | 287.5 | 439.4 | 190.2 | 336.9 |
| All | 417.6 | 150.3 | 346.5 | 487.9 | 196.8 | 408.6 |
| April 2007 | | | | | | |
| Men | 421.7 | 126.9 | 394.2 | 501.4 | 178.6 | 463.7 |
| Women | 367.7 | 145.3 | 272.6 | 427.9 | 173.8 | 321.1 |
| All | 400.3 | 140.8 | 329.9 | 471.7 | 174.8 | 391.3 |
| % Change 07 - 08 | | | | | | |
| Men | 4.1 | 11.2 | 2.6 | 3.9 | 21.4 | 3.5 |
| Women | 4.8 | 5.0 | 5.5 | 2.7 | 9.5 | 4.9 |
| All | 4.3 | 6.7 | 5.1 | 3.4 | 12.6 | 4.4 |
| April 2006 | | | | | | |
| Men | 421.6 | 122.3 | 390.7 | 500.9 | 169.7 | 456.9 |
| Women | 374.2 | 132.5 | 260.2 | 423.3 | 162.7 | 307.5 |
| All | 402.5 | 130.8 | 322.7 | 469.4 | 164.2 | 379.9 |
| Excluding methodological changes introduced in 2007 | | | | | | |
| April 2006 | | | | | | |
| Men | 424.3 | 122.5 | 392.8 | 502.9 | 172.6 | 459.0 |
| Women | 377.5 | 133.3 | 262.7 | 426.8 | 163.9 | 310.2 |
| All | 405.1 | 131.6 | 325.1 | 472.0 | 165.8 | 382.3 |
| April 2005 | | | | | | |
| Men | 409.5 | 131.3 | 384.8 | 486.5 | 186.8 | 453.6 |
| Women | 353.5 | 135.1 | 258.8 | 399.4 | 160.2 | 303.7 |
| All | 385.2 | 134.6 | 318.7 | 450.7 | 165.8 | 377.3 |

Average full-time earnings by occupation, April 2008

Table 15

| | Count (thousands) | Median gross weekly pay (£) | Mean gross weekly pay (£) | Median total weekly hours | Mean total weekly hours |
|--|----------------------|--------------------------------------|------------------------------------|------------------------------------|----------------------------------|
| Managers and Senior Officials | 69 | 554.8 | 653.4 | 37.7 | 38.8 |
| Professional Occupations | 78 | 660.1 | 686.0 | 37.0 | 36.8 |
| Associate Professional and Technical Occupations | 85 | 545.3 | 575.0 | 38.4 | 39.9 |
| Administrative and Secretarial Occupations | 61 | 322.2 | 348.5 | 37.6 | 38.9 |
| Skilled Trades Occupations | 54 | 399.4 | 438.1 | 40.0 | 41.9 |
| Personal Service Occupations | 31 | 296.1 | 321.8 | 37.5 | 38.3 |
| Sales and Customer Service Occupations | 20 | 253.8 | 298.7 | 37.6 | 38.6 |
| Process, Plant and Machine Operatives | 60 | 359.9 | 382.6 | 40.5 | 43.5 |
| Elementary Occupations | 48 | 305.5 | 324.3 | 40.0 | 41.6 |

Average full-time earnings by industry, April 2008

Table 16

| | Count (thousands) | Median gross weekly pay (£) | Mean gross weekly pay (£) | Median total weekly hours | Mean total weekly hours |
|--|----------------------|--------------------------------------|------------------------------------|------------------------------------|----------------------------------|
| Agriculture, hunting and forestry | x | x | 352.9 | 40.0 | 44.1 |
| Mining and quarrying | x | 369.7 | 419.7 | 41.3 | 45.9 |
| Manufacturing | 88 | 411.7 | 464.7 | 40.0 | 41.7 |
| Electricity, gas and water supply | 6 | 605.8 | 632.2 | 37.3 | 40.5 |
| Construction | 32 | 400.0 | 465.1 | 40.0 | 41.8 |
| Wholesale and retail trade; repair of motor vehicles, motorcycles and personal and household goods | 68 | 341.1 | 414.8 | 39.8 | 39.8 |
| Hotels and restaurants | 14 | 267.7 | 309.3 | 38.7 | 39.1 |
| Transport, storage and communication | 20 | 402.1 | 479.5 | 40.0 | 42.0 |
| Financial intermediation | 13 | 439.8 | 552.4 | 35.0 | 36.1 |
| Real estate, renting and business activities | 48 | 402.5 | 474.8 | 37.5 | 39.0 |
| Public administration and defence; compulsory social security | 54 | 556.3 | 582.0 | 42.0 | 42.9 |
| Education | 57 | 628.5 | 604.7 | 32.8 | 34.6 |
| Health and social work | 77 | 412.5 | 477.8 | 37.5 | 38.9 |
| Other community, social and personal service activities | 22 | 380.5 | 444.7 | 37.9 | 39.4 |
| Private households with employed persons | x | 274.6 | 292.0 | 33.6 | 35.2 |

x Coefficient of Variation too large to provide a reliable estimate

d Disclosive

Please note that the figures in the above two tables relating to numbers employed relate to PAYE employees as defined by ASHE and should not be considered an accurate estimate of employee job counts.

Sample of ASHE data available on website

Table 17

| Table name | Description | File size |
|------------|---|-----------|
| 6.1 | ASHE 1997 Headline Data for Key Variables | 42 KB |
| 6.2 | ASHE 1998 Headline Data for Key Variables | 68 KB |
| 6.3 | ASHE 1999 Headline Data for Key Variables | 72 KB |
| 6.4 | ASHE 2000 Headline Data for Key Variables | 48 KB |
| 6.5 | ASHE 2001 Headline Data for Key Variables | 72 KB |
| 6.6 | ASHE 2002 Headline Data for Key Variables | 78 KB |
| 6.7 | ASHE 2003 Headline Data for Key Variables | 163 KB |
| 6.8 | ASHE 2004 Headline Data for Key Variables excluding supplementary information | 51 KB |
| 6.9 | ASHE 2004 Headline Data for Key Variables | 52 KB |
| 6.10 | ASHE 2005 Headline Data for Key Variables | 52 KB |
| 6.11 | ASHE 2006 Headline Data for Key Variables excluding methodological changes | 168 KB |
| 6.12 | ASHE 2006 Headline Data for Key Variables | 176 KB |
| 6.13 | ASHE 2007 Headline Data for Key Variables - revised | 165 KB |
| 6.14 | ASHE 2008 Headline Data for Key Variables | 157 KB |

Vacancy Statistics and Employment & Training

7

Vacancy Statistics and Employment & Training Measures
Participation in the Department for Employment and Learning Schemes to May 2009
Table 18

| | Adults | | | Employment Support | Young People | | | |
|-------------|-----------------------|---------------------|-----------------|--------------------|-----------------------------|------------------|--------------------------------|------------------------------------|
| | New Deal 18-24 (2, 3) | New Deal 25+ (2, 3) | Future Managers | | Training for Success (4, 5) | Jobskills (4, 5) | % in Jobskills Access Training | % in Jobskills Mainstream Training |
| <u>2007</u> | | | | | | | | |
| May | 2,650 | 2,550 | 100 | 900 | - | 12,150 | 14 | 86 |
| <u>2008</u> | | | | | | | | |
| May | 2,250 | 2,350 | 150 | 800 | 5,800 | 6,300 | 6 | 94 |
| Jun | 2,150 | 2,250 | 150 | 800 | 5,800 | 5,950 | 5 | 95 |
| Jul | 2,050 | 2,150 | 200 | 800 | 5,750 | 5,700 | 5 | 95 |
| Aug | 2,050 | 2,100 | 150 | 800 | 5,550 | 5,150 | 5 | 95 |
| Sep | 1,800 | 1,850 | 150 | 800 | 9,450 | 4,750 | 4 | 96 |
| Oct | 1,100 | 1,250 | 150 | 750 | 11,050 | 4,450 | 4 | 96 |
| Nov | 950 | 1,050 | 150 | 750 | 11,400 | 4,200 | 4 | 96 |
| Dec | 800 | 800 | 150 | 750 | 10,850 | 3,950 | 4 | 96 |
| <u>2009</u> | | | | | | | | |
| Jan | 750 | 700 | 150 | 750 | 11,600 | 3,750 | 3 | 97 |
| Feb | 700 | 600 | 150 | 750 | 12,050 | 3,500 | 3 | 97 |
| Mar | 600 | 500 | 150 | 750 | 12,100 | 3,250 | 4 | 96 |
| Apr | 600 | 450 | 150 | 750 | 12,200 | 2,950 | 4 | 96 |
| May | 600 | 450 | 150 | 750 | 12,100 | 2,800 | 4 | 96 |

Figures in the above table are not National Statistics.

(1) Figures are rounded to the nearest fifty.

(2) New Deal 18-24 and 25+ figures relate to the last Sunday of each month and are revised on a monthly basis.

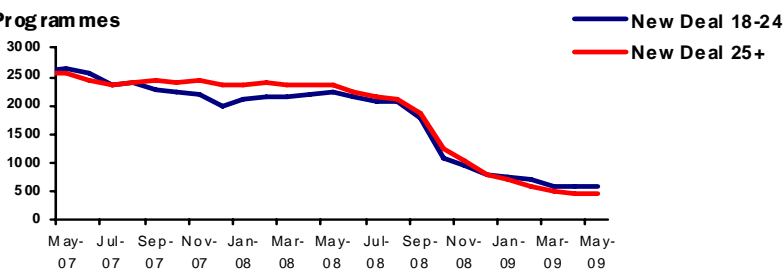
(3) Following the introduction of the Steps to Work (StW) initiative, participants starting New Deal 25+ in Knockbreda, Limavady, Lisburn and Shaftsbury Square (from April 2007) and in Carrickfergus and Magherafelt (from 28th January 2008) are not included in these statistics. From 25th February 2008, participants starting New Deal 18-24 in these six offices are also excluded. On 29th September 2008 StW was introduced in NI and subsumes New Deal – StW statistics are not yet available.

(4) Training for Success (TfS), was introduced in September 2007, and will ultimately replace Jobskills.

(5) May 2009 Jobskills and TfS figures are as at the 10th May 2009.

New Deal Programmes

Figure 13



Vacancies data

Headline figures are presented for vacancies which have been notified to JobCentres / Jobs & Benefits offices (JBO) of the Department for Employment and Learning (DEL). This series of statistics takes into account the total number of notified vacancy positions in addition to those that have been subsequently added or cancelled. The statistics do not represent the total unsatisfied demand for staff by employers within Northern Ireland, but are only those vacant positions notified by employers to the Department. Vacancy inflow and outflow figures are shown on a standardised basis, where values are converted to a standard 4 1/3 week period.

Vacancies notified (Inflow)

There were 4,254 standardised vacancies notified in the period ending 8th May 2009. This was 48%

lower than the number of standardised vacancies notified in May 2008 (8,134) and 10% less than the number of vacancies notified in May 2006 (4,748).

Vacancies filled and cancelled (Outflows)

The number of standardised placed and cancelled vacancies in the period ending 8th May 2009 was 4,521. This was a decrease of 48% from May 2008 (8,743) and a decrease of 19% from the same period three years previously (5,571).

Unfilled Vacancies

A total of 5,957 unadjusted vacancies remained unfilled on 8th May 2009, a decrease of 43% on the amount of unfilled vacancies in May 2008 (10,509) and a decrease of 34% on the amount unfilled in May 2006 (8,962).

Vacancies Notified, Outflow and Vacancies Unfilled: May 2006 to May 2009

Table 19

| Report Period Ending | | Vacancies notified (Inflows) (1) | | | Vacancies Filled and Cancelled (Outflows) (2) | | | Unfilled Vacancies (3) | |
|----------------------|--------|----------------------------------|--------------------------|---------------------------------------|---|--------------------------|---------------------------------------|------------------------|---------------------------------------|
| | | Level Unadjusted (4) | Level (standardised) (5) | Change on same month in previous year | Level unadjusted (4) | Level (standardised) (5) | Change on same month in previous year | Level Unadjusted | Change on same month in previous year |
| 2006 | 05-May | 4,383 | 4,748 | -2% | 5,142 | 5,571 | 7% | 8,962 | 7% |
| 2007 | 04-May | 7,683 | 8,323 | 75% | 6,800 | 7,367 | 32% | 11,663 | 30% |
| 2008 | 02-May | 7,508 | 8,134 | -2% | 8,070 | 8,743 | +19% | 10,509 | -10% |
| | 06-Jun | 8,667 | 7,511 | -8% | 8,611 | 7,463 | -8% | 10,565 | -10% |
| | 04-Jul | 5,785 | 6,267 | -17% | 6,696 | 7,254 | -16% | 9,654 | -10% |
| | 08-Aug | 7,389 | 6,404 | -13% | 7,319 | 6,343 | -14% | 9,724 | -9% |
| | 05-Sep | 6,591 | 7,140 | -25% | 5,878 | 6,368 | -15% | 10,437 | -19% |
| | 03-Oct | 7,171 | 7,769 | -47% | 6,651 | 7,205 | -44% | 10,957 | -25% |
| | 07-Nov | 7,155 | 6,201 | -46% | 8,714 | 7,552 | -34% | 9,398 | -37% |
| | 05-Dec | 4,169 | 4,516 | -45% | 6,525 | 7,069 | -35% | 7,042 | -40% |
| 2009 | 02-Jan | 2,137 | 2,315 | -53% | 4,551 | 4,930 | -34% | 4,628 | -51% |
| | 06-Feb | 6,309 | 5,468 | -45% | 4,794 | 4,155 | -45% | 6,143 | -49% |
| | 06-Mar | 5,138 | 5,566 | -34% | 4,778 | 5,176 | -32% | 6,503 | -49% |
| | 03-Apr | 4,110 | 4,453 | -34% | 4,349 | 4,711 | -45% | 6,264 | -43% |
| | 08-May | 4,909 | 4,254 | -48% | 5,216 | 4,521 | -48% | 5,957 | -43% |

Figures in the above table are not National Statistics.

(1) Vacancies notified (inflow) are all vacancy positions notified and added to JobCentres / JBOs of the Department for Employment and Learning (DEL).

(2) Outflows are those vacancies that have been notified to JobCentres / JBOs of DEL and have been placed or cancelled. This includes vacancies filled by JobCentres / JBOs or other recruitment channels and vacancies that have been withdrawn.

(3) Vacancies unfilled are those vacancies notified to JobCentres / JBOs of DEL remaining unfilled on the count date (the first Friday after the first Thursday of every month).

(4) Monthly flow data is collected for a 4 or 5 week period between count dates. Unadjusted levels reflect either a 4 or 5 week period.

(5) Standardised levels convert volumes to a standard 4 1/3 week month. Figures are not seasonally adjusted.

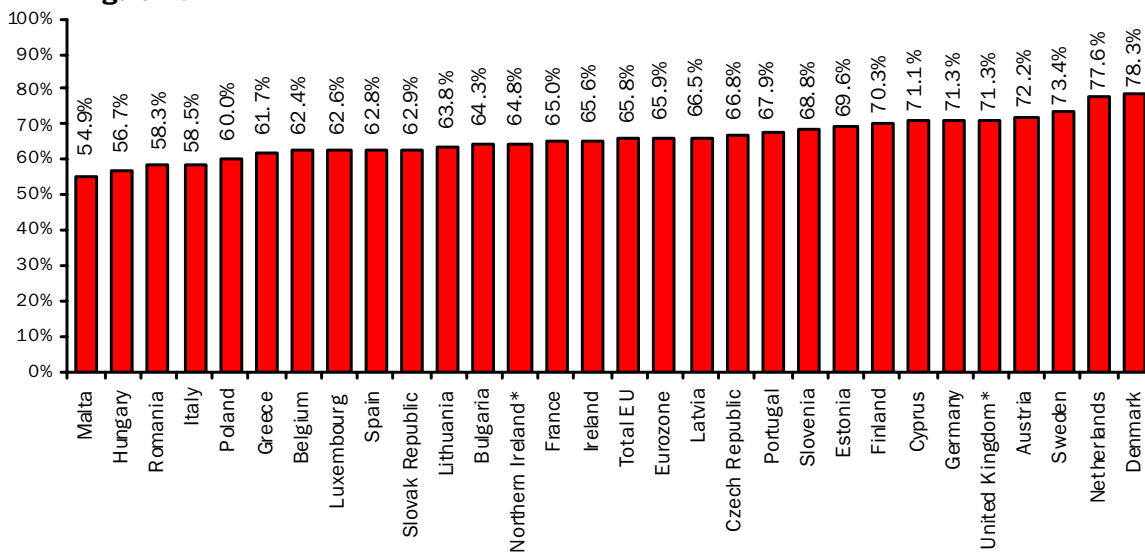
For a full back series of this table or for further details of Vacancy Statistics and Employment and Training Measures visit the DEL website at the following link: <http://www.delni.gov.uk/index/statistics-and-research/labour-market.htm> or alternatively contact the Department for Employment and Learning (DEL) by telephoning (028) 9025 7743.

International - Regional Analysis

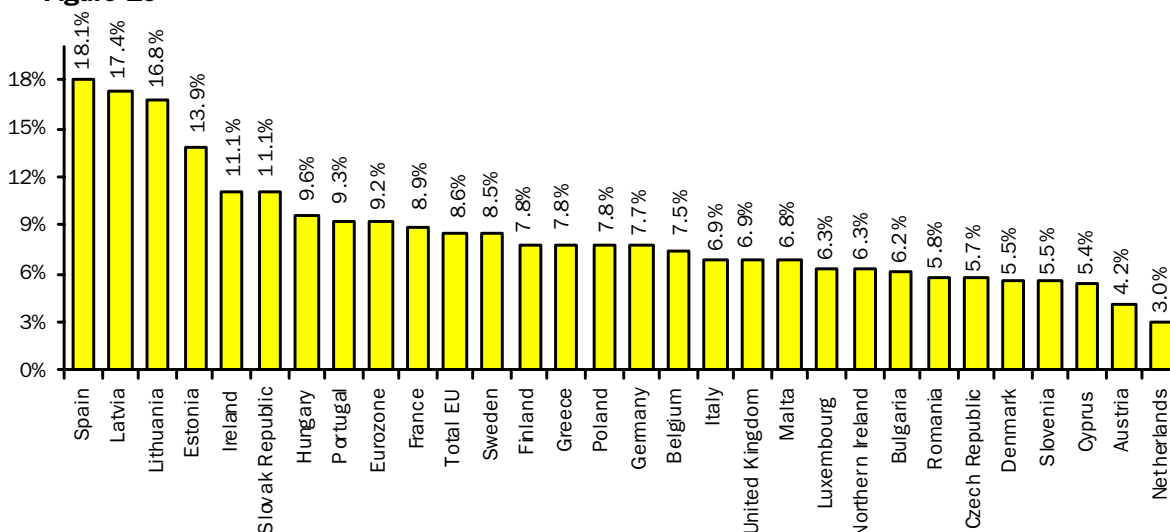


International Comparisons of ILO Employment and Unemployment

ILO Employment Rates (%) - Unadjusted
Figure 15



Unemployment Rates (%) - Seasonally Adjusted
Figure 16



Source: Eurostat

* A NI employment rate comparable to the EUROSTAT figures has been produced from the Calendar Quarter 4 2008 LFS dataset. It is based on the population aged 15-64 and differs from the working age rates (16-64 for men and 16-59 for women) published elsewhere in this publication, which take account of both the school-leaving and state pension age. The employment rate for the UK as published by EUROSTAT differs from the working age rate (16-59/64) published by ONS for the same reason. See link for further notes [International Comparisons of Employment](#)

Seasonally Adjusted Regional Summary, March - May 2009

Table 20

| | Total aged 16 and over | Total Economic Active | Total in employment | Unemployed | Economically Inactive | Activity rate (%) 16-59/64 | Unemployment rate (%) | Employee Jobs ¹ | Claimant count rate (%) ² | Jobs Density Indicator ³ |
|------------------------|------------------------|-----------------------|---------------------|------------|-----------------------|----------------------------|-----------------------|----------------------------|--------------------------------------|-------------------------------------|
| | A | B | C | D | E | F | G | H | I | J |
| North East | 2,084 | 1,244 | 1,129 | 115 | 840 | 75.8% | 9.2% | 1,023 | 7.1% | 0.78 |
| North West | 5,515 | 3,423 | 3,140 | 283 | 2,092 | 77.9% | 8.3% | 2,962 | 5.6% | 0.85 |
| Yorkshire & the Humber | 4,206 | 2,644 | 2,412 | 232 | 1,563 | 78.8% | 8.8% | 2,165 | 5.8% | 0.86 |
| East Midlands | 3,594 | 2,334 | 2,166 | 169 | 1,260 | 81.5% | 7.2% | 1,837 | 5.0% | 0.81 |
| West Midlands | 4,311 | 2,677 | 2,402 | 276 | 1,634 | 78.2% | 10.3% | 2,271 | 6.4% | 0.87 |
| East | 4,592 | 2,987 | 2,800 | 187 | 1,605 | 82.0% | 6.3% | 2,346 | 4.1% | 0.84 |
| London | 6,129 | 4,041 | 3,692 | 348 | 2,088 | 76.2% | 8.6% | 4,025 | 4.4% | 1.02 |
| South East | 6,700 | 4,429 | 4,160 | 269 | 2,271 | 82.6% | 6.1% | 3,668 | 3.4% | 0.89 |
| South West | 4,250 | 2,698 | 2,531 | 167 | 1,552 | 82.0% | 6.2% | 2,204 | 3.5% | 0.90 |
| England | 41,382 | 26,477 | 24,432 | 2,046 | 14,905 | 79.6% | 7.7% | 22,500 | 4.8% | 0.88 |
| Wales | 2,415 | 1,429 | 1,322 | 107 | 986 | 75.6% | 7.5% | 1,125 | 5.6% | 0.86 |
| Scotland | 4,204 | 2,682 | 2,504 | 179 | 1,522 | 79.9% | 6.7% | 2,363 | 4.6% | 0.91 |
| Great Britain | 48,001 | 30,588 | 28,257 | 2,331 | 17,413 | 79.4% | 7.6% | 25,988 | 4.8% | 0.88 |
| N Ireland | 1,380 | 794 | 744 | 50 | 586 | 70.0% | 6.3% | 715 | 5.7% | 0.79 |
| United Kingdom | 49,381 | 31,379 | 28,998 | 2,381 | 18,002 | 79.1% | 7.6% | 26,703 | 4.8% | 0.88 |

¹ As at Mar 2009

² As at June 2009: percentage of the workforce

³ Not seasonally adjusted – data relates to 2006. Jobs Density – total number of jobs in an area divided by the resident population of working age in that area.

Further Information

9

DEFINITIONS

ILO Definition

The definition of unemployment used in the Labour Force Survey (LFS) is in accordance with that promulgated by the International Labour Organisation (ILO). The ILO unemployed include those without a job who were able to start work in the two weeks following their LFS interview and had either looked for work in the four weeks prior to interview or were waiting to start a job they had already obtained.

The definition of ILO employed applies to anyone (aged 16 or over) who has done at least one hour's paid work in the week prior to interview, or has a job they are temporarily away from (e.g. on holiday). Also included are people who do unpaid work in a family business and people on Government-supported employment training schemes.

The ILO measures are particularly useful for examining short term and long term trends over time and key LFS time series data are available both seasonally adjusted and unadjusted. The key time series data also incorporates the latest mid year population estimates, however the more disaggregated 'microdata' has yet to be re-weighted to these totals (see link below for further details).

Sampling variability

The LFS is a sample survey, and as such, estimates obtained from it are subject to sampling variability. If we drew many samples each would give a different result. The ranges shown for the LFS data in table 1 represent 95% confidence intervals i.e. we would expect that in 95% of samples the range would contain the true value. These confidence intervals have been calculated using data that is unadjusted for seasonality, with the relevant sampling errors produced applied to the seasonally adjusted data.

If the 'annual change' for an estimate has increased or decreased by more than the 'sampling variability of the change', this change would be statistically significant. The annual changes in the main LFS categories of employment, unemployment and economic inactivity were all statistically significant at the 95% level in March - May 2009.

Please see attached link for further LFS notes and definitions.

[Labour Force Survey Notes and Definitions](#)

Claimant Count Definition

Claimant Count figures are derived from records of claimants held at Social Security Offices. The term 'claimants' in the claimant count is used to include those who claim Jobseeker's Allowance (JSA) and National Insurance credits. The figures include severely disabled claimants, but exclude students seeking vacation work and the temporarily stopped. The Claimant Count is a very up-to-date measure of those eligible to claim a specific unemployment related benefit and data are available for a range of geographical sub-regions (e.g. District Council Areas, Parliamentary Constituency Areas, Travel-to-Work Areas and Wards). It also provides seasonally adjusted and unadjusted data and as a result is a useful measure for examining both short-term and long-term trends.

[Background Notes to the Quarterly Employment Survey \(QES\)](#)

[Definitions for the Annual Survey of Hours and Earnings ASHE](#)

For Further Information:

AN ELECTRONIC VERSION OF THIS DOCUMENT WITH ASSOCIATED HYPERLINKS IS AVAILABLE ON THE HOME PAGE OF THE BRANCH WEBSITE AT:

www.statistics.detini.gov.uk

You can also contact Statistics Research Branch by: -

Writing to:

Statistics Research Branch, Room 110,
Netherleigh, Massey Avenue, Belfast BT4 2JP.

Tel: (028) 9052 9311

Fax: (028) 9052 9568

Textphone: (028) 9052 9304

Email: statistics@detini.gov.uk