

EDITION TWO – MAY 2000

The Inter Departmental Business Register (IDBR) is a statistical register, stored in the Office for National Statistics, Newport, South Wales, which contains details of approximately two million UK businesses. This booklet contains information on the Northern Ireland businesses whose details are held on the register – for example, how many there are, what they do and how many people they employ.



DETI
DEPARTMENT OF ENTERPRISE,
TRADE & INVESTMENT

CONTENTS

	<u>Page Number</u>
Introduction	1
What is the IDBR?	1
Why is it needed?	1
Business information held on the IDBR	1
How new businesses are brought onto the IDBR	2
Who uses the IDBR?	2
Who can use the IDBR?	2
Disclosure of statistical information held on the IDBR	3
Information available from the IDBR	
Businesses and employees in Northern Ireland	4
Businesses in District Council Areas	11
United Kingdom and Regional Comparisons	27
Comparisons with Republic of Ireland	29
VAT registrations and de-registrations	30
Foreign Ownership analyses	35
Further information	38
Annexes	
Annex 1 IDBR Structure	39
Annex 2 Glossary of IDBR Terms and Abbreviations	40
Annex 3 Analyses and Samples from the IDBR	42

INTRODUCTION

What is the IDBR?

The Inter Departmental Business Register (IDBR) was introduced in 1994 and became fully operational in 1995. It is located in the Office for National Statistics (ONS) in Newport, South Wales and the two main administrative sources are the Value Added Tax (VAT) system from HM Customs & Excise and Pay As You Earn (PAYE) records from Inland Revenue. It complies with European Union regulation 2186/93 on harmonisation of business registers for statistical purposes. This statistical register comprises 2 million UK enterprises (the statistical term that most closely equates to a business). Approximately 63,000 of these enterprises are in Northern Ireland. The register comprises companies, sole proprietors, partnerships, public authorities, central government departments, local authorities and non-profit making organisations. Its objective is to maintain an integrated and comprehensive register of all businesses to support statistical inquiries and promote consistency in government statistics. It is a dynamic register which is updated daily to reflect up-to-date information collected from various economic surveys and inquiries. The IDBR provides 98% coverage of the economy. All sectors are covered, although no extensive analysis is available for agriculture. Areas not covered include some very small businesses (such as self-employed persons, those businesses without employees and those which have a low turnover) and some non-profit making organisations. IDBR section in Statistics Research Branch, DETI is responsible for maintaining the Northern Ireland element of this UK-wide register so that it can be used as the sampling frame for Government business surveys.

Why is it needed?

The IDBR enables Government to conduct efficient and cost effective inquiries whilst minimising the burden on businesses. It is used for both national accounts and labour market statistics, as well as providing basic information on the structure of the economy (for example, business births and deaths). In short, it is used in four main ways:-

- to select the businesses to be included in the inquiries,
- to mail forms,
- to enable estimates to be made for businesses who do not respond (imputation) or who were not asked to participate in any particular inquiry (grossing up), and
- to produce analyses.

The register must therefore be comprehensive in coverage, accurate, up-to-date and contain the minimum amount of duplication.

Business information held on the IDBR

The main business data held are name, address, standard industrial classification (SIC(92)), employees, employment and turnover (updated quarterly from HM Customs and Excise). This information is supplemented by:

- Legal Status (company, sole proprietor, partnership, etc.)
- Parent company information - what businesses they own.
- Country of ownership details.
- Company registration number (CRN).

- Value of goods traded with EU Member States from Intrastat.
- Inquiry history - what statistical inquiries the business has been selected for since the IDBR became fully operational.
- Inquiry specific address - a business may have two distinct sites, for example, one for production activity and the other for research and development. The business may want inquiry forms solely relating to research and development to be sent directly to that site and thus inquiry specific address details are stored on the IDBR.
- Special sampling facilities - markers to identify when a business should be included or excluded from a specific inquiry.

How new businesses are brought onto the IDBR

The main administrative sources for the IDBR are HM Customs and Excise for VAT information and Inland Revenue for PAYE information. HM Customs and Excise send ONS weekly information on VAT registrations and de-registrations and once a month a list of 'births' is forwarded to DETI. Similarly Inland Revenue send ONS quarterly information on all PAYE schemes operating in the United Kingdom and DETI receive a list of those which are births in Northern Ireland. From these lists, IDBR section in Statistics Research Branch, DETI continually "prove" new businesses in Northern Ireland. Approximately 5,000 forms per annum are issued to such businesses in order to obtain industry and employment details - in other words, to "prove" their existence for statistical purposes. Additional forms are issued as and when IDBR section become aware of new businesses opening, from sources such as the media and local knowledge. Once these businesses are proved they immediately become available for selection for various Government business surveys.

Who uses the IDBR?

- Office for National Statistics - for statistical inquiries and analysis.
- Department of Enterprise, Trade and Investment - for statistical inquiries and analysis. Currently DETI is the only Northern Ireland Department with a link to the IDBR.
- Department of the Environment, Transport and the Regions (GB) and the Department for Regional Development (NI) - for construction inquiries.
- Department of Trade and Industry - for statistical inquiries and analysis, mainly relating to small firms. Information on VAT registrations and de-registrations published by DTI is contained later in this booklet.
- Ministry of Agriculture, Fisheries and Food - for analysis.
- The National Assembly for Wales - for statistical inquiries and analysis.
- The Scottish Executive - for analysis.
- Department for Education and Employment - for statistical inquiries.

Who can use the IDBR?

- Central Government (GB and NI) - for statistical and analytical purposes.
- Local authorities (GB only) - for planning purposes. Northern Ireland District Councils are currently prohibited from accessing the live register to either view or use individual company details due to legislative constraints. They are, of course, able to use aggregate data as per other external customers and members of the public.
- Research organisations - to carry out Government surveys under contract.
- General public - analysis and publications which have undergone disclosure checks.

Disclosure of statistical information held on the IDBR

The information held on the IDBR is classified as "Restricted-Commercial", or "Commercial-in-Confidence" and thus data on individual businesses may not be disclosed. Disclosure of information contained on the register without the consent of the undertaking (business) is an offence under the Statistics of Trade and Employment (Northern Ireland) Order 1988. However, various analyses of aggregate data can be run from the IDBR and samples of such data are shown in the following pages.

Notes:

1. Where reference is made to the year in a table/figure title (for example, Table 4), this relates to a particular point in time (here February 1999) when a frozen extract of the register is taken. Thus the corresponding figures are **not** annual averages.
2. Figures in the tables have been rounded to the nearest five and thus may not add to totals.
3. Where there are less than 20 businesses in a particular table cell, the employee figure has been suppressed to avoid disclosure.
4. An asterisk (*) denotes that the figure is not shown due to there being either no businesses or employees in that particular cell or due to confidentiality constraints. A confidentiality constraint is where measures are taken such as rounding and suppression of figures (as outlined above) to avoid disclosure of information on individual businesses.
5. The terms "businesses" and "enterprises" are used synonymously throughout this booklet.
6. No extensive analyses are available for the agricultural sector, as both MAFF and the Department of Agriculture and Rural Development (DARD) maintain their own registers and do not widely use the IDBR as the sampling frame for their surveys.
7. Employee figures for Northern Ireland held on the IDBR come from four main sources:
 - (i) the 1997 Northern Ireland Census of Employment, the figures having been loaded onto the IDBR in the autumn of 1998, (1999 figures are due to be loaded onto the IDBR in the autumn of 2000)
 - (ii) regular and miscellaneous proving exercises,
 - (iii) the Northern Ireland Quarterly Employment Survey, and
 - (iv) figures from other surveys conducted by Statistics Research Branch, DETI and ONS (for example, the Annual Business Inquiry and the Annual Register Inquiry).

BUSINESSES AND EMPLOYEES IN NORTHERN IRELAND

Note: The figures in Table 1 and Figure 1 exclude (i) agriculture (but include animal husbandry service activities and hunting, trapping and game propagation) and (ii) a small number of businesses which are imputed to have 20 or more employees but for which DETI have no information. Such businesses are commonly referred to as "unproven" and proving forms are regularly and continuously issued in order to obtain the relevant details.

Table 1 shows that Northern Ireland is a small business economy, where 85% of businesses have less than 10 employees, compared with only 2.9% having 50 or more. However most employees work in large businesses - 44.1% work in a business that has 500 or more employees, just 0.3% of all businesses in Northern Ireland.

Table 1 Businesses and employees in Northern Ireland at March 2000

(a) Private and public sector

Sizeband	0¹	1-9	10-19	20-49	50-99	100-199	200-249	250-499	500+	Total
Businesses	11,368	26,461	3,348	2,041	639	313	64	133	123	44,490
Employees	0	81,220	44,614	60,967	43,070	43,660	14,193	45,697	263,219	596,640

¹ This sizeband includes sole proprietors and partnerships, holding companies and those companies which are not yet trading, for example, if a factory is under construction.

(b) Private sector

Sizeband	0	1-9	10-19	20-49	50-99	100-199	200-249	250-499	500+	Total
Businesses	11,368	26,443	3,324	1,980	611	287	57	114	66	44,250
Employees	0	81,129	44,291	58,923	41,234	39,959	12,623	39,124	88,252	405,535

(c) Public sector

Sizeband	0	1-9	10-19	20-49	50-99	100-199	200-249	250-499	500+	Total
Businesses	0	18	24	61	28	26	7	19	57	240
Employees	0	91	323	2,044	1,836	3,701	1,570	6,573	174,967	191,105

It is clear to see the public sector's importance as a major employer in Northern Ireland - almost one out of every three employees works in the public sector (including both central and local government).

Figure 1 Employees in private and public sector businesses, March 2000

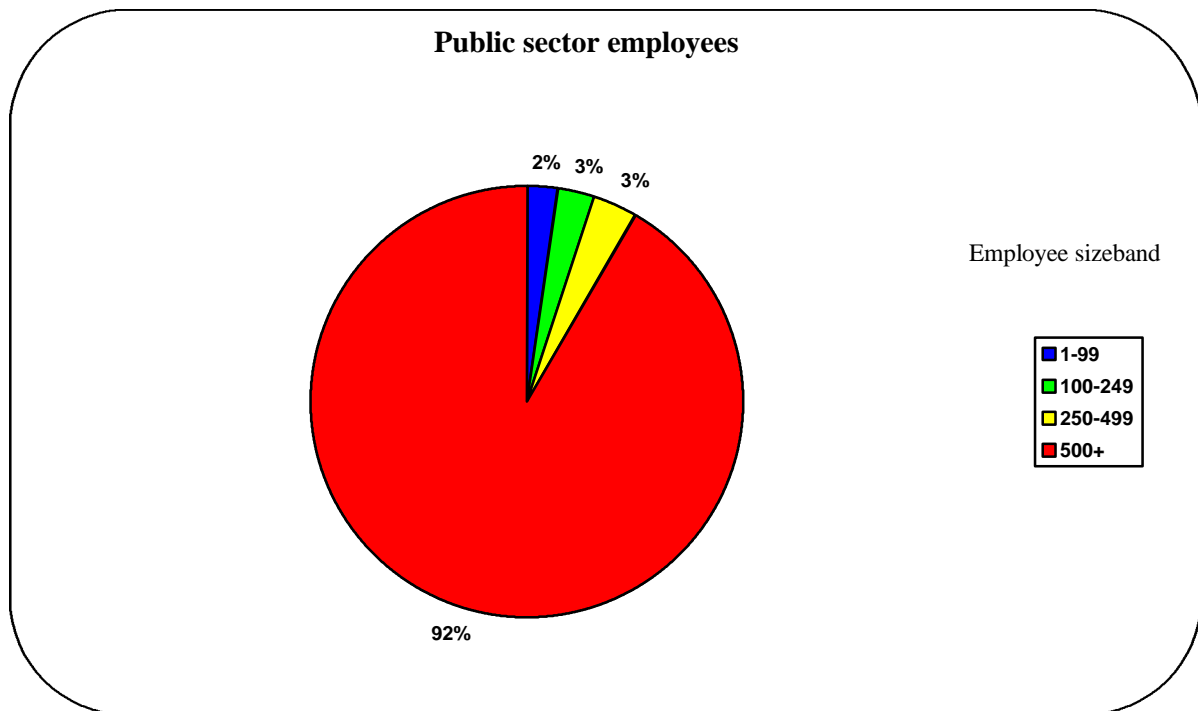
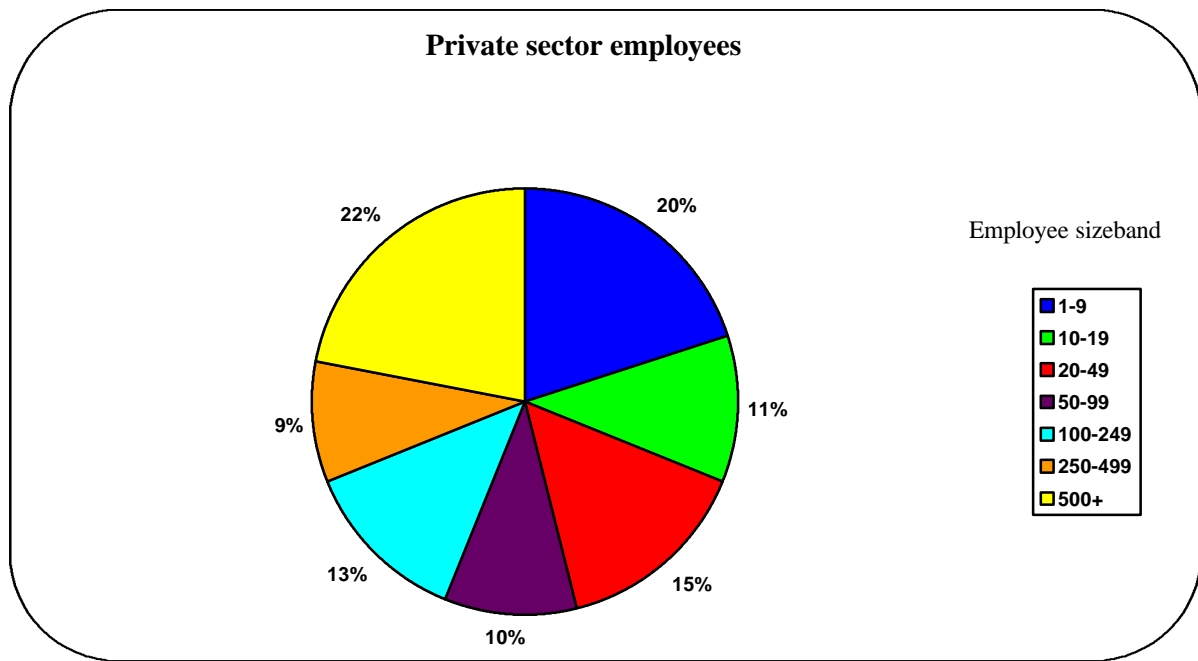


Table 2 Enterprises in Northern Ireland by number of local units at January 2000

More than half of all enterprises in Northern Ireland on the IDBR have no local units (a local unit is an individual site (factory, shop, office, etc) at which an enterprise conducts its business). Such enterprises are mainly sole proprietors or partners conducting their business without any employees. 43% of enterprises have one local unit with the remaining 4% having 2 or more local units.

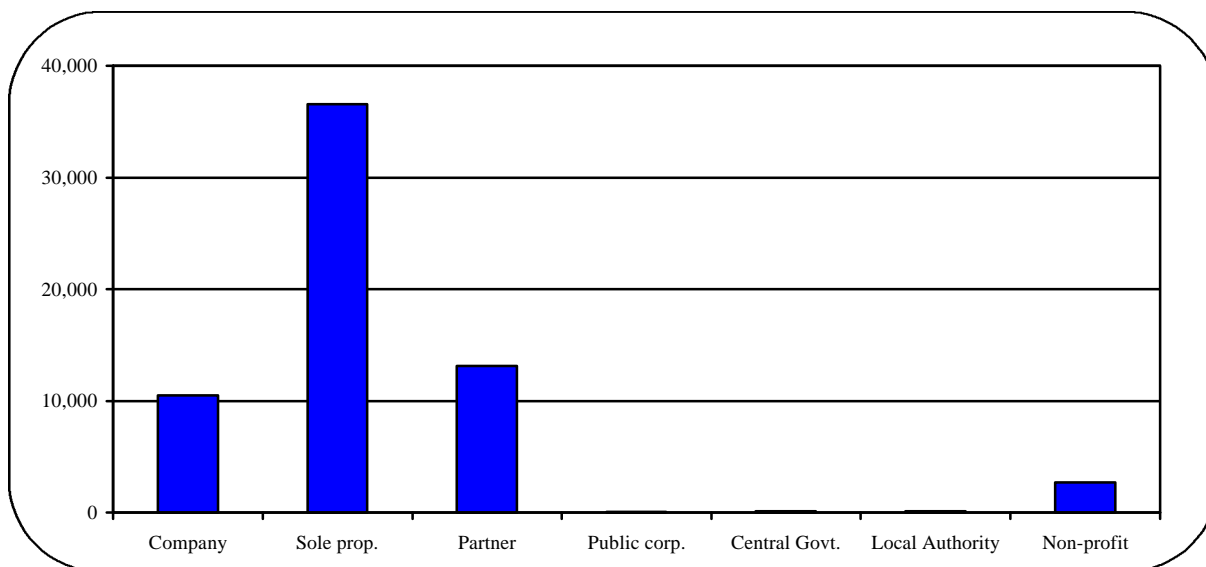
Number of local units in business	Businesses	%	Employment	%
0	33,358	52.8	58,787	8.9
1	27,157	43.0	245,853	37.1
2+	2,658	4.2	357,081	54.0
Total	63,173		661,721	

Table 3 Enterprises in Northern Ireland by legal status at January 2000

58% of enterprises in Northern Ireland are sole proprietors. However private sector companies comprise 40% of employment in Northern Ireland.

Legal Status	Businesses	%	Employment	%
1 Company	10,525	16.7	266,304	40.2
2 Sole Proprietor	36,579	57.9	96,240	14.5
3 Partnership	13,123	20.8	77,389	11.7
4 Public corporation	25	0.0	8,832	1.3
5 Central Government	123	0.2	167,058	25.2
6 Local Authority	97	0.2	17,328	2.6
7 Non profit making organisation	2,701	4.3	28,570	4.3
Total	63,173		661,721	

Figure 2 Enterprises in Northern Ireland by legal status at January 2000



Note: The data in tables 2 and 3 and figure 2 are a snapshot of the entire Northern Ireland element of the IDBR at a particular point in time (January 2000). As the register changes on a daily basis, the data cannot and should not be compared with other tables in this booklet.

Table 4 Businesses and employees in Northern Ireland by broad industry group, 1999

The data in Figures 3 and 4 and Tables 4-11 are based on VAT registered businesses. Those businesses with only a PAYE reference are excluded to avoid any possible duplication. Thus coverage in VAT exempt areas such as health, education and public administration is incomplete.

SIC(92) Section	Businesses	% of total	Employees	% of total
A Agriculture, Hunting and Forestry	17,095	32.9	5,210	1.5
B Fishing	215	0.4	160	0.0
C Mining and Quarrying	95	0.2	1,685	0.5
D Manufacturing	3,810	7.3	98,075	28.6
E Electricity, Gas and Water Supply	15	0.0	3,115	0.9
F Construction	6,270	12.1	27,120	7.9
G Wholesale & Retail Trade; Repair of Motor Vehicles, Motorcycles and Personal and Household Goods	12,265	23.6	75,080	21.9
H Hotels and Restaurants	2,730	5.3	27,070	7.9
I Transport, Storage and Communication	1,905	3.7	12,030	3.5
J Financial Intermediation	165	0.3	7,925	2.3
K Real Estate, Renting and Business Activities	5,130	9.9	30,740	9.0
L Public Administration and Defence; Compulsory Social Security	20	0.0	21,425	6.2
M Education	115	0.2	8,110	2.4
N Health & Social Work	265	0.5	6,835	2.0
O Other Community Services, Social and Personal Service Activities	1,865	3.6	18,225	5.3
Total	51,965		342,805	

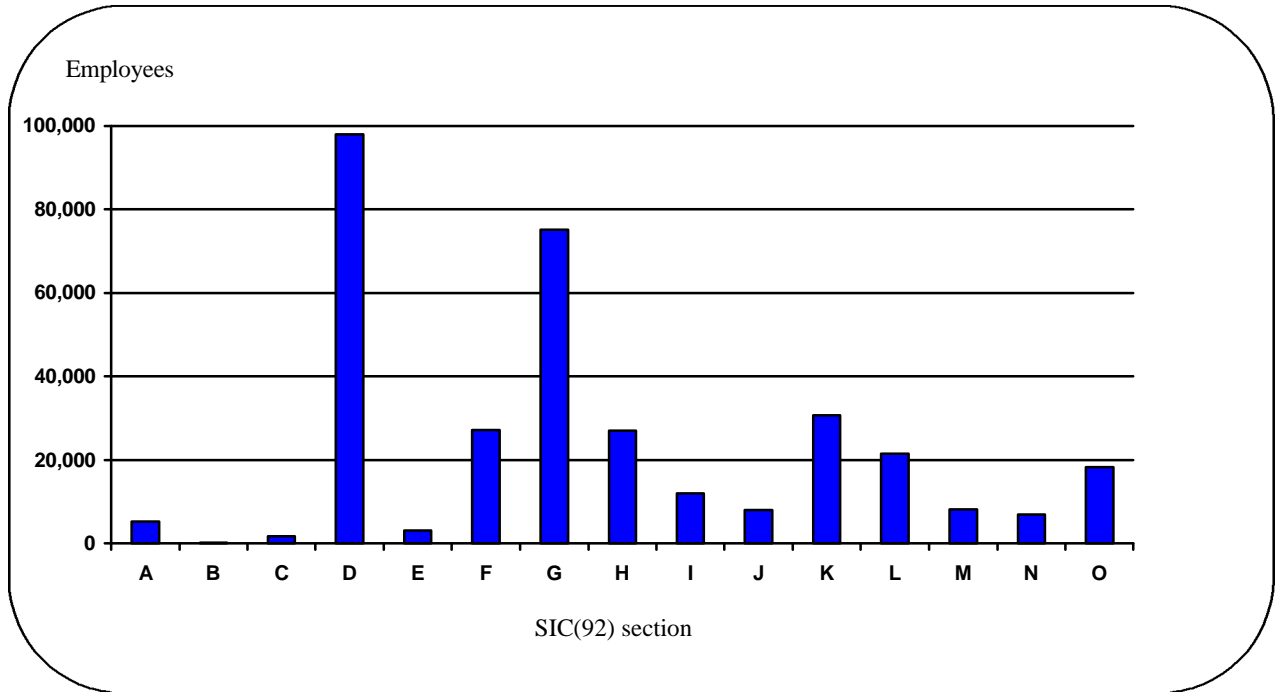
Table 5 Changes in numbers of businesses and employees in Northern Ireland by broad industry group since last year

SIC(92) Section	Businesses	% change	Employees	% change
A Agriculture, Hunting and Forestry	-275	-1.6	-1,080	-17.2
B Fishing	-5	-2.3	-70	-30.4
C Mining and Quarrying	-5	-5.0	60	3.7
D Manufacturing	20	0.5	-1,055	-1.1
E Electricity, Gas and Water Supply	-10	-40.0	-345	-10.0
F Construction	245	4.1	3,390	14.3
G Wholesale & Retail Trade; Repair of Motor Vehicles, Motorcycles and Personal and Household Goods	-20	-0.2	1,095	1.5
H Hotels and Restaurants	25	0.9	1,855	7.4
I Transport, Storage and Communication	50	2.7	-505	-4.0
J Financial Intermediation	5	3.1	1,615	25.6
K Real Estate, Renting and Business Activities	315	6.5	3,030	10.9
L Public Administration and Defence; Compulsory Social Security	5	-25.0	-385	-1.8
M Education	25	27.8	-5,160	-38.9
N Health & Social Work	10	3.9	205	3.1
O Other Community Services, Social and Personal Service Activities	-215	-10.3	-10	-0.1
Total	170	0.3	2,640	0.8

Note: Care should be taken when using these figures as they are calculated using rounded figures for both years. However they give a broad indication of changes by broad industry group over the year.

Figure 3 Employees in private sector VAT registered businesses, 1999

In 1999, one third of private sector businesses registered for VAT in Northern Ireland were in agriculture. These businesses employed 1.5% of private sector employees. A further 23.6% of private sector businesses were in the wholesale and retail industries, employing over one fifth of private sector employees. The manufacturing sector employed 28.6% of private sector employees.



See previous page for a list of SIC(92) sections.

Figure 4 illustrates the share of businesses - split by employee sizeband - for the broad industry groups. It is evident that the majority of agriculture and fishing businesses are run by self-employed persons who have no employees. In both the manufacturing and service sector industries, the majority of businesses employ between 1 and 49 people. One quarter of the businesses in the electricity, gas and water supply industry group employ more than 50 people.

Figure 4 VAT registered businesses by broad industry group and employee sizeband, 1999

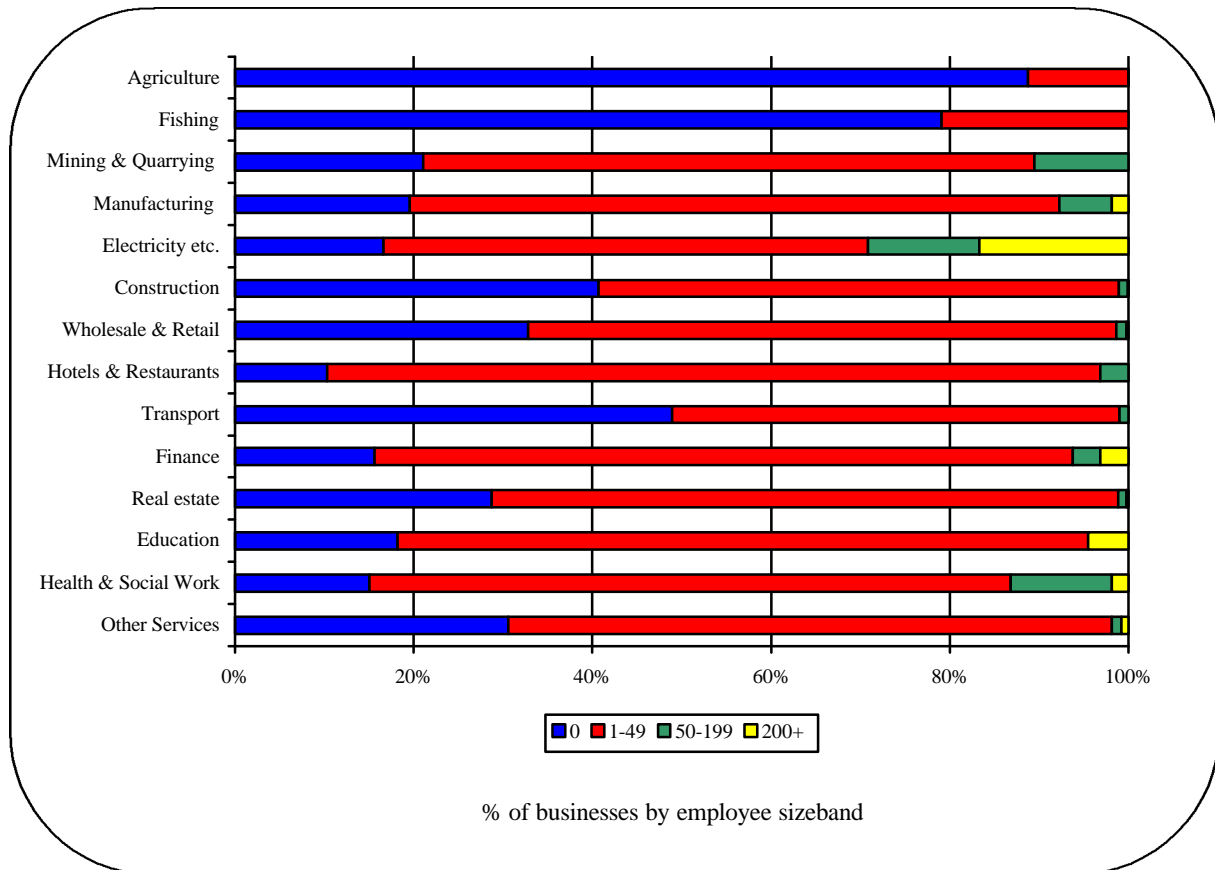


Table 6 VAT-based enterprises by industrial classification and turnover, 1999

55.8% of enterprises in Northern Ireland had a turnover of less than £100,000 in 1999, whereas only 7.4% had a turnover of £1,000,000 or more. The comparable figures in Great Britain were 48.8% and 8.9% respectively.

Industrial classification	Turnover (£'000)							Total
	1-49	50-99	100-249	250-499	500-999	1,000-4,999	5,000+	
Agriculture, forestry & fishing	11,595	2,970	2,125	415	135	65	10	17,310
Production:	610	705	870	550	385	565	235	3,920
<i>Of which, Mining/quarrying & utilities</i>	15	10	20	15	10	30	10	110
<i>Of which, Manufacturing</i>	595	695	850	535	375	535	225	3,810
Construction	1,580	1,570	1,465	725	450	410	70	6,270
Motor Trades	290	380	455	335	335	460	85	2,340
Wholesale	565	500	685	455	370	570	150	3,300
Retail	660	1,430	2,100	1,200	715	455	65	6,625
Hotels & Catering	200	835	970	365	215	130	10	2,730
Transport	420	530	345	155	115	150	35	1,750
Post & Telecommunications	65	35	30	15	5	10	0	155
Finance	50	35	25	15	10	10	20	165
Property & Business	1,405	1,370	1,215	530	345	235	35	5,130
Education	25	30	30	10	10	5	0	115
Health	65	60	55	35	35	10	0	265
Public admin. & other services	490	540	470	210	100	60	10	1,885
Northern Ireland	18,025	10,990	10,845	5,010	3,230	3,135	730	51,965
Great Britain	349,275	403,620	375,565	172,450	105,505	102,035	35,285	1,543,740
United Kingdom	367,300	414,610	386,410	177,460	108,735	105,170	36,015	1,595,705

Source: Size Analysis of United Kingdom Businesses (Business Monitor PA1003), 1999

BUSINESSES IN DISTRICT COUNCIL AREAS

Table 7 shows the number of businesses by broad industry group in each of the District Council Areas (DCA) in Northern Ireland. Agriculture dominates the economy in rural and border DCAs with services and retail businesses predominant in urban DCAs such as Belfast and Derry.

Table 8 shows the number of businesses by employee sizeband. Rural and border DCAs have the most number of VAT-registered businesses with 0 employees, with the majority of these being self-employed farmers. As one would expect, Belfast and Derry DCAs have half of those businesses which employ 500 or more people.

Table 9 shows the number of businesses and employees by broad industry group in each of the DCAs.

Note: Each business is allocated to a DCA based on the address where it is registered for VAT (normally the head office, if the business has a number of work sites). Thus a business with its head office in Belfast is included in the figures for Belfast, even though it may have work sites in other District Council areas – for example, banks. Similarly, companies that have their United Kingdom headquarters in Great Britain (such as Marks and Spencer plc), will be included only in the region where their head office is based. Therefore many multi-national companies are also excluded from these tables.

Table 7 Number of VAT - based enterprises by broad industry group and District Council, 1999

District Council	Agriculture	Production	Construction	Motor Trades	Wholesale	Retail	Hotel & Catering	Transport	Post & Telecom	Finance	Property & Business	Education	Health	Public admin & other services	Total
Antrim	565	105	210	70	85	145	80	110	15	0	125	5	10	45	1,580
Ards	580	195	265	100	150	335	130	50	5	10	185	5	10	90	2,105
Armagh	1,225	165	210	110	160	220	105	135	5	5	110	5	5	60	2,510
Ballymena	930	135	260	110	115	275	105	60	5	0	160	0	5	50	2,210
Ballymoney	555	70	150	60	45	120	35	40	5	0	55	0	5	15	1,145
Banbridge	780	100	230	65	85	165	65	60	10	0	90	0	10	45	1,705
Belfast	20	540	495	240	600	1,220	455	195	25	75	1,655	35	55	465	6,075
Carrickfergus	70	65	70	25	40	100	40	10	5	0	75	5	5	30	545
Castlereagh	95	110	175	50	110	175	45	35	5	5	130	0	10	55	1,005
Coleraine	575	120	195	80	95	245	135	40	5	5	175	5	10	60	1,745
Cookstown	895	130	210	95	70	150	70	65	0	0	70	0	5	25	1,790
Craigavon	450	225	265	125	155	315	110	85	5	5	210	5	10	90	2,055
Derry	370	180	290	85	155	330	140	55	5	5	275	5	10	80	1,985
Down	765	120	390	95	110	275	150	40	10	5	155	0	10	75	2,195
Dungannon	1,280	235	250	90	115	260	100	75	5	5	130	5	15	40	2,595
Fermanagh	1,865	130	240	140	100	315	125	50	10	5	110	5	20	65	3,180
Larne	385	50	95	40	45	125	60	55	0	5	65	0	0	40	960
Limavady	420	55	180	35	30	115	60	20	0	0	45	5	5	25	995
Lisburn	620	285	450	150	295	315	125	125	10	10	300	5	15	145	2,850
Magherafelt	795	155	325	75	65	155	70	75	5	5	95	5	10	20	1,845
Moyle	390	25	80	25	30	70	45	15	0	0	20	0	5	10	715
Newry & Mourne	1,155	250	435	135	195	345	155	170	10	10	180	5	15	95	3,155
Newtownabbey	175	155	210	115	175	225	80	90	10	5	205	5	10	75	1,530
North Down	65	125	155	65	130	240	115	30	5	5	330	10	10	120	1,405
Omagh	1,455	115	280	95	90	215	75	30	5	5	135	5	10	35	2,545
Strabane	825	80	160	60	50	175	65	35	0	0	50	0	5	20	1,535
Northern Ireland	1,7310	3,920	6,270	2,340	3,300	6,625	2,730	1,750	155	165	5,130	115	265	1,885	51,965

Source: Size Analysis of United Kingdom Businesses (Business Monitor PA1003), 1999

Table 8 Number of VAT - based enterprises by employee sizeband and District Council, 1999

Sizeband	0	1 - 9	10 - 19	20 - 49	50 - 99	100 - 199	200 - 499	500+	Total
District Council									
Antrim	810	605	85	40	10	15	5	*	1,580
Ards	955	985	95	55	10	5	*	*	2,105
Armagh	1,520	825	90	55	10	5	*	*	2,510
Ballymena	1245	770	105	65	20	*	5	*	2,210
Ballymoney	675	390	35	30	5	5	*	*	1,145
Banbridge	1,050	540	65	30	10	5	*	*	1,705
Belfast	1,230	3,540	645	400	115	65	35	25	6,075
Carrickfergus	210	255	45	20	10	*	5	*	545
Castlereagh	390	470	85	30	15	5	5	5	1,005
Coleraine	805	735	100	70	20	5	5	*	1,745
Cookstown	1,140	540	60	35	10	*	*	*	1,790
Craigavon	855	930	145	65	35	10	15	*	2,055
Derry	755	955	160	70	15	10	5	5	1,985
Down	1,160	865	105	55	10	5	*	*	2,195
Dungannon	1,585	825	95	60	10	10	5	*	2,595
Fermanagh	2,245	770	90	55	15	5	*	*	3,180
Larne	530	350	55	15	5	*	*	*	960
Limavady	560	370	30	20	5	*	*	*	995
Lisburn	1,235	1,265	175	105	35	15	10	*	2,850
Magherafelt	1,130	595	55	35	15	5	*	*	1,845
Moyle	480	205	15	10	*	*	*	*	715
Newry and Mourne	1,655	1,210	160	95	15	5	5	5	3,155
Newtownabbey	530	735	125	75	30	15	5	*	1,530
North Down	480	735	105	55	15	*	5	*	1,405
Omagh	1,765	655	75	35	10	5	*	*	2,545
Strabane	980	465	55	20	5	5	*	*	1,535
Northern Ireland	25,975	20,585	2,850	1,605	460	210	120	50	51,965
* Figure not shown due to there either being no businesses in the cell or due to confidentiality constraints.									

Table 9 Businesses and employees by broad industry group and District Council, 1999¹

Antrim

SIC(92) Section	Businesses¹	% of total	Employees	% of total
A Agriculture, Hunting and Forestry	560	35.6	265	2.2
B Fishing	5	0.3	*	*
C Mining and Quarrying	*	*	*	*
D Manufacturing	105	6.7	3,210	26.2
E Electricity, Gas and Water Supply	*	*	*	*
F Construction	210	13.3	1,490	12.2
G Wholesale & Retail Trade; Repair of Motor Vehicles, Motorcycles and Personal and Household Goods	305	19.4	1,060	8.7
H Hotels and Restaurants	80	5.1	1,065	8.7
I Transport, Storage and Communication	125	7.9	715	5.8
J Financial Intermediation	*	*	*	*
K Real Estate, Renting and Business Activities	120	7.6	765	6.2
L Public Administration and Defence; Compulsory Social Security	*	*	*	*
M Education	5	0.3	*	*
N Health & Social Work	10	0.6	*	*
O Other Community Services, Social and Personal Service Activities	45	2.9	395	3.2
Total	1,570		12,245	
¹ Figures are based on VAT registered businesses only.				
* Figure not shown due to there either being no businesses in the cell or due to confidentiality constraints.				

Ards

SIC(92) Section	Businesses¹	% of total	Employees	% of total
A Agriculture, Hunting and Forestry	520	24.7	295	3.5
B Fishing	55	2.6	25	0.3
C Mining and Quarrying	5	0.2	*	*
D Manufacturing	195	9.3	2,875	34.1
E Electricity, Gas and Water Supply	*	*	*	*
F Construction	265	12.6	755	9.0
G Wholesale & Retail Trade; Repair of Motor Vehicles, Motorcycles and Personal and Household Goods	585	27.8	2,010	23.8
H Hotels and Restaurants	130	6.2	965	11.4
I Transport, Storage and Communication	55	2.6	105	1.2
J Financial Intermediation	10	0.5	*	*
K Real Estate, Renting and Business Activities	185	8.8	420	5.0
L Public Administration and Defence; Compulsory Social Security	*	*	*	*
M Education	5	0.2	*	*
N Health & Social Work	10	0.5	*	*
O Other Community Services, Social and Personal Service Activities	90	4.3	735	8.7
Total	2,105		8,430	
¹ Figures are based on VAT registered businesses only.				
* Figure not shown due to there either being no businesses in the cell or due to confidentiality constraints.				

¹ A 2 digit (divisional) SIC(92) by employee sizeband breakdown is available, subject to confidentiality constraints, for both individual District Council Areas and Northern Ireland as a whole. For further information please contact Statistics Research Branch, DETI at the address shown on page 38.

Armagh

SIC(92) Section	Businesses ¹	% of total	Employees	% of total
A Agriculture, Hunting and Forestry	1,225	48.9	480	6.7
B Fishing	*	*	*	*
C Mining and Quarrying	10	0.4	*	*
D Manufacturing	155	6.2	1,640	22.8
E Electricity, Gas and Water Supply	*	*	*	*
F Construction	210	8.4	575	8.0
G Wholesale & Retail Trade; Repair of Motor Vehicles, Motorcycles and Personal and Household Goods	485	19.4	2,110	29.3
H Hotels and Restaurants	105	4.2	425	5.9
I Transport, Storage and Communication	135	5.4	705	9.8
J Financial Intermediation	5	0.2	*	*
K Real Estate, Renting and Business Activities	110	4.4	285	4.0
L Public Administration and Defence; Compulsory Social Security	*	*	*	*
M Education	5	0.2	*	*
N Health & Social Work	5	0.2	*	*
O Other Community Services, Social and Personal Service Activities	60	2.4	550	7.6
Total	2,510		7,195	

¹ Figures are based on VAT registered businesses only.
* Figure not shown due to there either being no businesses in the cell or due to confidentiality constraints.

Ballymena

SIC(92) Section	Businesses ¹	% of total	Employees	% of total
A Agriculture, Hunting and Forestry	925	42.0	310	2.9
B Fishing	*	*	*	*
C Mining and Quarrying	5	0.2	*	*
D Manufacturing	125	5.7	2,920	27.1
E Electricity, Gas and Water Supply	*	*	*	*
F Construction	260	11.8	1,165	10.8
G Wholesale & Retail Trade; Repair of Motor Vehicles, Motorcycles and Personal and Household Goods	500	22.7	2,360	21.9
H Hotels and Restaurants	105	4.8	765	7.1
I Transport, Storage and Communication	65	2.9	205	1.9
J Financial Intermediation	*	*	*	*
K Real Estate, Renting and Business Activities	160	7.3	2,225	20.7
L Public Administration and Defence; Compulsory Social Security	*	*	*	*
M Education	*	*	*	*
N Health & Social Work	5	0.2	*	*
O Other Community Services, Social and Personal Service Activities	50	2.3	630	5.8
Total	2,210		10,770	

¹ Figures are based on VAT registered businesses only.
* Figure not shown due to there either being no businesses in the cell or due to confidentiality constraints.

Ballymoney

SIC(92) Section	Businesses ¹	% of total	Employees	% of total
A Agriculture, Hunting and Forestry	550	48.2	175	4.7
B Fishing	*	*	*	*
C Mining and Quarrying	*	*	*	*
D Manufacturing	65	5.7	1,065	28.8
E Electricity, Gas and Water Supply	*	*	*	*
F Construction	150	13.2	640	17.3
G Wholesale & Retail Trade; Repair of Motor Vehicles, Motorcycles and Personal and Household Goods	225	19.7	725	19.6
H Hotels and Restaurants	35	3.1	200	5.4
I Transport, Storage and Communication	40	3.5	220	5.9
J Financial Intermediation	*	*	*	*
K Real Estate, Renting and Business Activities	55	4.8	395	10.7
L Public Administration and Defence; Compulsory Social Security	*	*	*	*
M Education	*	*	*	*
N Health & Social Work	5	0.4	*	*
O Other Community Services, Social and Personal Service Activities	15	1.3	*	*
Total	1,145		3,700	
¹ Figures are based on VAT registered businesses only.				
* Figure not shown due to there either being no businesses in the cell or due to confidentiality constraints.				

Banbridge

SIC(92) Section	Businesses ¹	% of total	Employees	% of total
A Agriculture, Hunting and Forestry	775	45.6	215	4.4
B Fishing	*	*	*	*
C Mining and Quarrying	*	*	*	*
D Manufacturing	95	5.6	1,165	23.8
E Electricity, Gas and Water Supply	*	*	*	*
F Construction	230	13.5	945	19.3
G Wholesale & Retail Trade; Repair of Motor Vehicles, Motorcycles and Personal and Household Goods	315	18.5	1,185	24.2
H Hotels and Restaurants	65	3.8	520	10.6
I Transport, Storage and Communication	70	4.1	225	4.6
J Financial Intermediation	*	*	*	*
K Real Estate, Renting and Business Activities	90	5.3	325	6.6
L Public Administration and Defence; Compulsory Social Security	*	*	*	*
M Education	*	*	*	*
N Health & Social Work	10	0.6	*	*
O Other Community Services, Social and Personal Service Activities	45	2.6	235	4.8
Total	1,705		4,900	
¹ Figures are based on VAT registered businesses only.				
* Figure not shown due to there either being no businesses in the cell or due to confidentiality constraints.				

Belfast

SIC(92) Section	Businesses ¹	% of total	Employees	% of total
A Agriculture, Hunting and Forestry	20	0.3	40	*
B Fishing	*	*	*	*
C Mining and Quarrying	5	0.1	*	*
D Manufacturing	530	8.8	17,245	15.0
E Electricity, Gas and Water Supply	5	0.1	*	*
F Construction	490	8.1	3,560	3.1
G Wholesale & Retail Trade; Repair of Motor Vehicles, Motorcycles and Personal and Household Goods	2,050	33.9	24,890	21.7
H Hotels and Restaurants	450	7.4	8,070	7.0
I Transport, Storage and Communication	220	3.6	5,100	4.4
J Financial Intermediation	70	1.2	7,675	6.7
K Real Estate, Renting and Business Activities	1,650	27.3	15,690	13.7
L Public Administration and Defence; Compulsory Social Security	10	0.2	*	*
M Education	35	0.6	4,715	4.1
N Health & Social Work	55	0.9	2,640	2.3
O Other Community Services, Social and Personal Service Activities	455	7.5	6,255	5.4
Total	6,075		114,835	

¹ Figures are based on VAT registered businesses only.
* Figure not shown due to there either being no businesses in the cell or due to confidentiality constraints.

Carrickfergus

SIC(92) Section	Businesses ¹	% of total	Employees	% of total
A Agriculture, Hunting and Forestry	70	12.8	10	0.3
B Fishing	*	*	*	*
C Mining and Quarrying	*	*	*	*
D Manufacturing	60	11.0	1,540	39.0
E Electricity, Gas and Water Supply	*	*	*	*
F Construction	70	12.8	265	6.7
G Wholesale & Retail Trade; Repair of Motor Vehicles, Motorcycles and Personal and Household Goods	170	31.2	660	16.7
H Hotels and Restaurants	40	7.3	370	9.4
I Transport, Storage and Communication	15	2.8	*	*
J Financial Intermediation	*	*	*	*
K Real Estate, Renting and Business Activities	75	13.8	155	3.9
L Public Administration and Defence; Compulsory Social Security	*	*	*	*
M Education	5	0.9	*	*
N Health & Social Work	5	0.9	*	*
O Other Community Services, Social and Personal Service Activities	30	5.5	310	7.9
Total	545		3,945	

¹ Figures are based on VAT registered businesses only.
* Figure not shown due to there either being no businesses in the cell or due to confidentiality constraints.

Castlereaigh

SIC(92) Section	Businesses ¹	% of total	Employees	% of total
A Agriculture, Hunting and Forestry	95	9.5	130	1.5
B Fishing	*	*	*	*
C Mining and Quarrying	*	*	*	*
D Manufacturing	110	11.0	3,490	41.0
E Electricity, Gas and Water Supply	*	*	*	*
F Construction	175	17.5	975	11.5
G Wholesale & Retail Trade; Repair of Motor Vehicles, Motorcycles and Personal and Household Goods	330	33.0	1,755	20.6
H Hotels and Restaurants	45	4.5	430	5.0
I Transport, Storage and Communication	40	4.0	75	0.9
J Financial Intermediation	5	0.5	*	*
K Real Estate, Renting and Business Activities	130	13.0	520	6.1
L Public Administration and Defence; Compulsory Social Security	*	*	*	*
M Education	*	*	*	*
N Health & Social Work	10	1.0	*	*
O Other Community Services, Social and Personal Service Activities	55	5.5	670	7.9
Total	1,005		8,515	

¹ Figures are based on VAT registered businesses only.
* Figure not shown due to there either being no businesses in the cell or due to confidentiality constraints.

Coleraine

SIC(92) Section	Businesses ¹	% of total	Employees	% of total
A Agriculture, Hunting and Forestry	575	33.0	230	1.6
B Fishing	*	*	*	*
C Mining and Quarrying	5	0.3	*	*
D Manufacturing	115	6.6	4,610	31.5
E Electricity, Gas and Water Supply	*	*	*	*
F Construction	195	11.2	995	6.8
G Wholesale & Retail Trade; Repair of Motor Vehicles, Motorcycles and Personal and Household Goods	425	24.4	2,335	15.9
H Hotels and Restaurants	135	7.8	1,480	10.1
I Transport, Storage and Communication	40	2.3	210	1.4
J Financial Intermediation	5	0.3	*	*
K Real Estate, Renting and Business Activities	175	10.1	805	5.5
L Public Administration and Defence; Compulsory Social Security	*	*	*	*
M Education	5	0.3	*	*
N Health & Social Work	10	0.6	*	*
O Other Community Services, Social and Personal Service Activities	60	3.4	830	5.7
Total	1,745		14,645	

¹ Figures are based on VAT registered businesses only.
* Figure not shown due to there either being no businesses in the cell or due to confidentiality constraints.

Cookstown

SIC(92) Section	Businesses ¹	% of total	Employees	% of total
A Agriculture, Hunting and Forestry	875	49.0	240	5.5
B Fishing	20	1.1	15	0.3
C Mining and Quarrying	5	0.3	*	*
D Manufacturing	125	7.0	1,045	24.1
E Electricity, Gas and Water Supply	*	*	*	*
F Construction	210	11.8	655	15.1
G Wholesale & Retail Trade; Repair of Motor Vehicles, Motorcycles and Personal and Household Goods	315	17.6	1,155	26.6
H Hotels and Restaurants	70	3.9	575	13.2
I Transport, Storage and Communication	65	3.6	190	4.4
J Financial Intermediation	*	*	*	*
K Real Estate, Renting and Business Activities	70	3.9	230	5.3
L Public Administration and Defence; Compulsory Social Security	*	*	*	*
M Education	*	*	*	*
N Health & Social Work	5	0.3	*	*
O Other Community Services, Social and Personal Service Activities	25	1.4	205	4.7
Total	1,790		4,345	

¹ Figures are based on VAT registered businesses only.
* Figure not shown due to there either being no businesses in the cell or due to confidentiality constraints.

Craigavon

SIC(92) Section	Businesses ¹	% of total	Employees	% of total
A Agriculture, Hunting and Forestry	445	21.7	235	1.3
B Fishing	5	0.2	*	*
C Mining and Quarrying	*	*	*	*
D Manufacturing	225	10.9	10,255	56.3
E Electricity, Gas and Water Supply	*	*	*	*
F Construction	265	12.9	1,430	7.8
G Wholesale & Retail Trade; Repair of Motor Vehicles, Motorcycles and Personal and Household Goods	590	28.7	2,990	16.4
H Hotels and Restaurants	110	5.4	1,025	5.6
I Transport, Storage and Communication	90	4.4	365	2.0
J Financial Intermediation	5	0.2	*	*
K Real Estate, Renting and Business Activities	210	10.2	995	5.5
L Public Administration and Defence; Compulsory Social Security	*	*	*	*
M Education	5	0.2	*	*
N Health & Social Work	10	0.5	*	*
O Other Community Services, Social and Personal Service Activities	90	4.4	820	4.5
Total	2,055		18,230	

¹ Figures are based on VAT registered businesses only.
* Figure not shown due to there either being no businesses in the cell or due to confidentiality constraints.

Derry

SIC(92) Section	Businesses ¹	% of total	Employees	% of total
A Agriculture, Hunting and Forestry	370	18.7	45	0.2
B Fishing	*	*	*	*
C Mining and Quarrying	*	*	*	*
D Manufacturing	175	8.8	12,610	60.0
E Electricity, Gas and Water Supply	*	*	*	*
F Construction	290	14.6	1,295	6.2
G Wholesale & Retail Trade; Repair of Motor Vehicles, Motorcycles and Personal and Household Goods	570	28.8	2,785	13.3
H Hotels and Restaurants	140	7.1	1,245	5.9
I Transport, Storage and Communication	60	3.0	215	1.0
J Financial Intermediation	5	0.3	*	*
K Real Estate, Renting and Business Activities	270	13.6	1,595	7.6
L Public Administration and Defence; Compulsory Social Security	*	*	*	*
M Education	5	0.3	*	*
N Health & Social Work	10	0.5	*	*
O Other Community Services, Social and Personal Service Activities	80	4.0	925	4.4
Total	1,985		21,010	
¹ Figures are based on VAT registered businesses only.				
* Figure not shown due to there either being no businesses in the cell or due to confidentiality constraints.				

Down

SIC(92) Section	Businesses ¹	% of total	Employees	% of total
A Agriculture, Hunting and Forestry	740	33.7	260	3.7
B Fishing	25	1.1	15	0.2
C Mining and Quarrying	5	0.2	*	*
D Manufacturing	120	5.5	1,225	17.6
E Electricity, Gas and Water Supply	*	*	*	*
F Construction	390	17.8	1,170	16.8
G Wholesale & Retail Trade; Repair of Motor Vehicles, Motorcycles and Personal and Household Goods	480	21.9	1,925	27.7
H Hotels and Restaurants	150	6.8	1,110	15.9
I Transport, Storage and Communication	45	2.1	180	2.6
J Financial Intermediation	5	0.2	*	*
K Real Estate, Renting and Business Activities	155	7.1	375	5.4
L Public Administration and Defence; Compulsory Social Security	*	*	*	*
M Education	*	*	*	*
N Health & Social Work	10	0.5	*	*
O Other Community Services, Social and Personal Service Activities	75	3.4	510	7.3
Total	2,195		6,955	
¹ Figures are based on VAT registered businesses only.				
* Figure not shown due to there either being no businesses in the cell or due to confidentiality constraints.				

Dungannon

SIC(92) Section	Businesses ¹	% of total	Employees	% of total
A Agriculture, Hunting and Forestry	1,275	49.1	415	4.6
B Fishing	*	*	*	*
C Mining and Quarrying	5	0.2	*	*
D Manufacturing	230	8.9	3,430	38.2
E Electricity, Gas and Water Supply	*	*	*	*
F Construction	250	9.6	645	7.2
G Wholesale & Retail Trade; Repair of Motor Vehicles, Motorcycles and Personal and Household Goods	465	17.9	2,420	26.9
H Hotels and Restaurants	100	3.9	540	6.0
I Transport, Storage and Communication	80	3.1	235	2.6
J Financial Intermediation	5	0.2	*	*
K Real Estate, Renting and Business Activities	130	5.0	520	5.8
L Public Administration and Defence; Compulsory Social Security	*	*	*	*
M Education	5	0.2	*	*
N Health & Social Work	15	0.6	*	*
O Other Community Services, Social and Personal Service Activities	40	1.5	105	1.2
Total	2,595		8,980	

¹ Figures are based on VAT registered businesses only.

* Figure not shown due to there either being no businesses in the cell or due to confidentiality constraints.

Fermanagh

SIC(92) Section	Businesses ¹	% of total	Employees	% of total
A Agriculture, Hunting and Forestry	1,865	58.6	210	2.5
B Fishing	*	*	*	*
C Mining and Quarrying	5	0.2	*	*
D Manufacturing	125	3.9	2,735	32.2
E Electricity, Gas and Water Supply	*	*	*	*
F Construction	240	7.5	795	9.4
G Wholesale & Retail Trade; Repair of Motor Vehicles, Motorcycles and Personal and Household Goods	555	17.5	1,920	22.6
H Hotels and Restaurants	125	3.9	1,025	12.1
I Transport, Storage and Communication	60	1.9	225	2.6
J Financial Intermediation	5	0.2	*	*
K Real Estate, Renting and Business Activities	110	3.5	360	4.2
L Public Administration and Defence; Compulsory Social Security	*	*	*	*
M Education	5	0.2	*	*
N Health & Social Work	20	0.6	515	6.1
O Other Community Services, Social and Personal Service Activities	65	2.0	490	5.8
Total	3,180		8,500	

¹ Figures are based on VAT registered businesses only.

* Figure not shown due to there either being no businesses in the cell or due to confidentiality constraints.

Larne

SIC(92) Section	Businesses ¹	% of total	Employees	% of total
A Agriculture, Hunting and Forestry	375	39.1	65	1.4
B Fishing	5	0.5	*	*
C Mining and Quarrying	*	*	*	*
D Manufacturing	45	4.7	1,820	38.4
E Electricity, Gas and Water Supply	*	*	*	*
F Construction	95	9.9	190	4.0
G Wholesale & Retail Trade; Repair of Motor Vehicles, Motorcycles and Personal and Household Goods	210	21.9	930	19.6
H Hotels and Restaurants	60	6.3	525	11.1
I Transport, Storage and Communication	55	5.7	230	4.9
J Financial Intermediation	5	0.5	*	*
K Real Estate, Renting and Business Activities	65	6.8	165	3.5
L Public Administration and Defence; Compulsory Social Security	*	*	*	*
M Education	*	*	*	*
N Health & Social Work	*	*	*	*
O Other Community Services, Social and Personal Service Activities	40	4.2	350	7.4
Total	960		4,735	

¹ Figures are based on VAT registered businesses only.
* Figure not shown due to there either being no businesses in the cell or due to confidentiality constraints.

Limavady

SIC(92) Section	Businesses ¹	% of total	Employees	% of total
A Agriculture, Hunting and Forestry	420	42.2	140	3.6
B Fishing	*	*	*	*
C Mining and Quarrying	*	*	*	*
D Manufacturing	55	5.5	1,390	35.5
E Electricity, Gas and Water Supply	*	*	*	*
F Construction	180	18.1	645	16.5
G Wholesale & Retail Trade; Repair of Motor Vehicles, Motorcycles and Personal and Household Goods	185	18.6	870	22.2
H Hotels and Restaurants	60	6.0	550	14.0
I Transport, Storage and Communication	20	2.0	40	1.0
J Financial Intermediation	*	*	*	*
K Real Estate, Renting and Business Activities	45	4.5	115	2.9
L Public Administration and Defence; Compulsory Social Security	*	*	*	*
M Education	5	0.5	*	*
N Health & Social Work	5	0.5	*	*
O Other Community Services, Social and Personal Service Activities	20	2.0	60	1.5
Total	995		3,920	

¹ Figures are based on VAT registered businesses only.
* Figure not shown due to there either being no businesses in the cell or due to confidentiality constraints.

Lisburn

SIC(92) Section	Businesses ¹	% of total	Employees	% of total
A Agriculture, Hunting and Forestry	620	21.8	310	1.8
B Fishing	*	*	*	*
C Mining and Quarrying	5	0.2	*	*
D Manufacturing	280	9.8	5,365	30.5
E Electricity, Gas and Water Supply	*	*	*	*
F Construction	450	15.8	1,870	10.6
G Wholesale & Retail Trade; Repair of Motor Vehicles, Motorcycles and Personal and Household Goods	760	26.7	5,275	30.0
H Hotels and Restaurants	125	4.4	1,515	8.6
I Transport, Storage and Communication	135	4.7	370	2.1
J Financial Intermediation	10	0.4	*	*
K Real Estate, Renting and Business Activities	300	10.5	1,625	9.2
L Public Administration and Defence; Compulsory Social Security	*	*	*	*
M Education	5	0.2	*	*
N Health & Social Work	15	0.5	*	*
O Other Community Services, Social and Personal Service Activities	145	5.1	935	5.3
Total	2,850		17,590	

¹ Figures are based on VAT registered businesses only.
* Figure not shown due to there either being no businesses in the cell or due to confidentiality constraints.

Magherafelt

SIC(92) Section	Businesses ¹	% of total	Employees	% of total
A Agriculture, Hunting and Forestry	790	42.8	155	2.5
B Fishing	*	*	*	*
C Mining and Quarrying	5	0.3	*	*
D Manufacturing	150	8.1	2,345	37.3
E Electricity, Gas and Water Supply	*	*	*	*
F Construction	325	17.6	1,455	23.2
G Wholesale & Retail Trade; Repair of Motor Vehicles, Motorcycles and Personal and Household Goods	295	16.0	1,265	20.1
H Hotels and Restaurants	70	3.8	210	3.3
I Transport, Storage and Communication	80	4.3	135	2.1
J Financial Intermediation	5	0.3	*	*
K Real Estate, Renting and Business Activities	95	5.1	185	2.9
L Public Administration and Defence; Compulsory Social Security	*	*	*	*
M Education	5	0.3	*	*
N Health & Social Work	10	0.5	*	*
O Other Community Services, Social and Personal Service Activities	20	1.1	225	3.6
Total	1,845		6,280	

¹ Figures are based on VAT registered businesses only.
* Figure not shown due to there either being no businesses in the cell or due to confidentiality constraints.

Moyle

SIC(92) Section	Businesses ¹	% of total	Employees	% of total
A Agriculture, Hunting and Forestry	385	53.5	55	3.9
B Fishing	5	0.7	*	*
C Mining and Quarrying	*	*	*	*
D Manufacturing	25	3.5	215	15.2
E Electricity, Gas and Water Supply	*	*	*	*
F Construction	80	11.1	170	12.0
G Wholesale & Retail Trade; Repair of Motor Vehicles, Motorcycles and Personal and Household Goods	130	18.1	490	34.6
H Hotels and Restaurants	45	6.3	285	20.1
I Transport, Storage and Communication	15	2.1	*	*
J Financial Intermediation	*	*	*	*
K Real Estate, Renting and Business Activities	20	2.8	40	2.8
L Public Administration and Defence; Compulsory Social Security	*	*	*	*
M Education	*	*	*	*
N Health & Social Work	5	0.7	*	*
O Other Community Services, Social and Personal Service Activities	10	1.4	*	*
Total	715		1,415	
¹ Figures are based on VAT registered businesses only.				
* Figure not shown due to there either being no businesses in the cell or due to confidentiality constraints.				

Newry and Mourne

SIC(92) Section	Businesses ¹	% of total	Employees	% of total
A Agriculture, Hunting and Forestry	1,070	34.0	225	1.3
B Fishing	80	2.5	50	0.3
C Mining and Quarrying	15	0.5	*	*
D Manufacturing	235	7.5	5,840	33.5
E Electricity, Gas and Water Supply	*	*	*	*
F Construction	435	13.8	1,940	11.1
G Wholesale & Retail Trade; Repair of Motor Vehicles, Motorcycles and Personal and Household Goods	670	21.3	5,970	34.2
H Hotels and Restaurants	155	4.9	860	4.9
I Transport, Storage and Communication	180	5.7	620	3.6
J Financial Intermediation	10	0.3	*	*
K Real Estate, Renting and Business Activities	180	5.7	665	3.8
L Public Administration and Defence; Compulsory Social Security	*	*	*	*
M Education	5	0.2	*	*
N Health & Social Work	15	0.5	*	*
O Other Community Services, Social and Personal Service Activities	95	3.0	940	5.4
Total	3,155		17,440	
¹ Figures are based on VAT registered businesses only.				
* Figure not shown due to there either being no businesses in the cell or due to confidentiality constraints.				

Newtownabbey

SIC(92) Section	Businesses ¹	% of total	Employees	% of total
A Agriculture, Hunting and Forestry	170	11.1	200	1.5
B Fishing	*	*	*	*
C Mining and Quarrying	*	*	*	*
D Manufacturing	155	10.2	3,255	24.0
E Electricity, Gas and Water Supply	*	*	*	*
F Construction	210	13.8	1,425	10.5
G Wholesale & Retail Trade; Repair of Motor Vehicles, Motorcycles and Personal and Household Goods	515	33.8	4,085	30.1
H Hotels and Restaurants	80	5.2	865	6.4
I Transport, Storage and Communication	100	6.6	1,055	7.8
J Financial Intermediation	5	0.3	*	*
K Real Estate, Renting and Business Activities	205	13.4	815	6.0
L Public Administration and Defence; Compulsory Social Security	*	*	*	*
M Education	5	0.3	*	*
N Health & Social Work	10	0.7	*	*
O Other Community Services, Social and Personal Service Activities	75	4.9	500	3.7
Total	1,530		13,575	

¹ Figures are based on VAT registered businesses only.
* Figure not shown due to there either being no businesses in the cell or due to confidentiality constraints.

North Down

SIC(92) Section	Businesses ¹	% of total	Employees	% of total
A Agriculture, Hunting and Forestry	65	4.6	45	0.5
B Fishing	5	0.4	*	*
C Mining and Quarrying	*	*	*	*
D Manufacturing	125	8.9	1,930	21.3
E Electricity, Gas and Water Supply	*	*	*	*
F Construction	155	11.0	585	6.5
G Wholesale & Retail Trade; Repair of Motor Vehicles, Motorcycles and Personal and Household Goods	430	30.6	1,810	20.0
H Hotels and Restaurants	115	8.2	1,715	18.9
I Transport, Storage and Communication	35	2.5	115	1.3
J Financial Intermediation	5	0.4	*	*
K Real Estate, Renting and Business Activities	325	23.1	865	9.5
L Public Administration and Defence; Compulsory Social Security	*	*	*	*
M Education	10	0.7	*	*
N Health & Social Work	10	0.7	*	*
O Other Community Services, Social and Personal Service Activities	120	8.5	720	7.9
Total	1,405		9,065	

¹ Figures are based on VAT registered businesses only.
* Figure not shown due to there either being no businesses in the cell or due to confidentiality constraints.

Omagh

SIC(92) Section	Businesses ¹	% of total	Employees	% of total
A Agriculture, Hunting and Forestry	1,455	57.2	260	4.9
B Fishing	*	*	*	*
C Mining and Quarrying	10	0.4	*	*
D Manufacturing	105	4.1	1,110	20.9
E Electricity, Gas and Water Supply	*	*	*	*
F Construction	280	11.0	810	15.3
G Wholesale & Retail Trade; Repair of Motor Vehicles, Motorcycles and Personal and Household Goods	400	15.7	1,225	23.1
H Hotels and Restaurants	75	2.9	515	9.7
I Transport, Storage and Communication	35	1.4	95	1.8
J Financial Intermediation	5	0.2	*	*
K Real Estate, Renting and Business Activities	130	5.1	465	8.8
L Public Administration and Defence; Compulsory Social Security	*	*	*	*
M Education	5	0.2	*	*
N Health & Social Work	10	0.4	*	*
O Other Community Services, Social and Personal Service Activities	35	1.4	525	9.9
Total	2,545		5,305	

¹ Figures are based on VAT registered businesses only.
* Figure not shown due to there either being no businesses in the cell or due to confidentiality constraints.

Strabane

SIC(92) Section	Businesses ¹	% of total	Employees	% of total
A Agriculture, Hunting and Forestry	820	53.6	205	3.3
B Fishing	*	*	*	*
C Mining and Quarrying	5	0.3	*	*
D Manufacturing	80	5.2	3,750	59.7
E Electricity, Gas and Water Supply	*	*	*	*
F Construction	160	10.5	670	10.7
G Wholesale & Retail Trade; Repair of Motor Vehicles, Motorcycles and Personal and Household Goods	285	18.6	870	13.9
H Hotels and Restaurants	65	4.2	225	3.6
I Transport, Storage and Communication	35	2.3	80	1.3
J Financial Intermediation	*	*	*	*
K Real Estate, Renting and Business Activities	50	3.3	145	2.3
L Public Administration and Defence; Compulsory Social Security	*	*	*	*
M Education	*	*	*	*
N Health & Social Work	5	0.3	*	*
O Other Community Services, Social and Personal Service Activities	30	2.0	70	1.1
Total	1,535		6,280	

¹ Figures are based on VAT registered businesses only.
* Figure not shown due to there either being no businesses in the cell or due to confidentiality constraints.

UNITED KINGDOM AND REGIONAL COMPARISONS

Northern Ireland's reliance on the agricultural industry is evident in Table 10. Proportionately, there are almost four times as many agricultural businesses in Northern Ireland than in Great Britain. The greater diversity in Great Britain's economy is also evident, with its higher proportion of businesses in service sector industries such as hotels and catering and property and business services.

Table 10 Number of VAT-based businesses by industrial classification, 1999

Industrial Classification	Northern Ireland	%	Great Britain	%	United Kingdom	%
Agriculture	17,310	33.3	130,500	8.5	147,810	9.3
Production	3,920	7.5	152,180	9.9	156,100	9.8
<i>Of which, Mining/quarrying & utilities</i>	<i>110</i>	<i>0.2</i>	<i>1,420</i>	<i>0.1</i>	<i>1,530</i>	<i>0.1</i>
<i>Of which, manufacturing</i>	<i>3,810</i>	<i>7.3</i>	<i>150,760</i>	<i>9.8</i>	<i>154,570</i>	<i>9.7</i>
Construction	6,270	12.1	163,195	10.6	169,465	10.6
Motor Trades	2,340	4.5	66,305	4.3	68,645	4.3
Wholesale	3,300	6.4	109,755	7.1	113,055	7.1
Retail	6,625	12.7	196,195	12.7	202,820	12.7
Hotels & Catering	2,730	5.3	101,395	6.6	104,125	6.5
Transport	1,750	3.4	60,025	3.9	61,775	3.9
Post & Telecommunications	155	0.3	10,265	0.7	10,420	0.7
Finance	165	0.3	11,985	0.8	12,150	0.8
Property & Business Services	5,130	9.9	389,590	25.2	394,720	24.7
Education	115	0.2	7,900	0.5	8,015	0.5
Health	265	0.5	8,625	0.6	8,890	0.6
Public Administration & Other Services	1,885	3.6	135,830	8.8	137,715	8.6
Total	51,965		1,543,740		1,595,705	

Source: Size Analysis of United Kingdom Businesses (Business Monitor PA 1003), 1999

Table 11 shows the numbers of VAT-based businesses in the standard statistical regions of the United Kingdom. Agricultural businesses play an important role in the local economies of Scotland, Wales and the North and South West regions of England. The vast majority of businesses in the South East region of England (and Greater London in particular) are involved in property and business services.

Table 11 Number and percentage of VAT-based businesses by industrial classification and UK region, 1999

Number	North	North West	Yorks & Humber	East Midlands	West Midlands	East Anglia	Greater London	Rest of South East	South West	Wales	Scotland
Industrial Classification											
Agriculture	8,150	6,590	11,015	10,910	11,640	8,615	690	14,755	22,105	16,825	19,200
Production	4,970	15,215	12,965	14,220	18,840	6,315	20,130	32,085	12,950	5,600	8,890
<i>Of which, Mining/quarrying & utilities</i>	80	70	115	120	90	60	175	210	160	90	250
<i>Of which, manufacturing</i>	4,890	15,145	12,850	14,100	18,750	6,250	19,955	31,875	12,790	5,510	8,640
Construction	5,765	14,065	12,390	12,155	14,735	7,640	16,635	42,635	17,120	8,000	12,045
Motor Trades	2,640	6,770	5,755	5,350	6,415	3,140	6,365	14,735	7,150	3,520	4,465
Wholesale	2,815	12,040	8,460	8,330	10,430	4,180	21,380	24,080	8,690	3,635	5,715
Retail	9,230	22,475	17,890	14,340	17,750	7,240	27,895	35,245	18,010	9,835	16,290
Hotels & Catering	5,255	9,710	8,345	6,980	8,095	4,060	13,555	17,935	11,025	6,320	10,120
Transport	2,670	6,005	5,625	4,930	5,280	2,795	8,120	12,390	4,980	2,920	4,310
Post & Telecommunications	245	885	635	740	1,025	420	2,100	2,805	720	265	420
Finance	150	905	475	485	685	370	5,305	2,155	645	200	605
Property & Business Services	9,265	33,530	21,335	21,090	27,305	13,630	93,770	106,070	31,370	9,965	22,260
Education	280	655	560	550	720	330	1,275	1,935	730	295	575
Health	315	735	610	570	690	390	1,470	1,880	965	400	600
Public Administration & Other Services	4,455	10,320	8,610	7,670	9,385	4,800	32,475	31,755	11,310	4,455	10,590
Total	56,215	139,900	114,670	108,310	133,000	63,930	251,170	340,455	147,765	72,240	116,085

Source: Size Analysis of United Kingdom Businesses (Business Monitor PA 1003), 1999

Percentage	North	North West	Yorks & Humber	East Midlands	West Midlands	East Anglia	Greater London	Rest of South East	South West	Wales	Scotland
Industrial Classification											
Agriculture	14.5	4.7	9.6	10.1	8.8	13.5	0.3	4.3	15.0	23.3	16.5
Production	8.8	10.9	11.3	13.1	14.2	9.9	8.0	9.4	8.8	7.8	7.7
<i>Of which, Mining/quarrying & utilities</i>	0.1	0.1	0.1	0.1	0.1	0.1	0.1	0.1	0.1	0.1	0.2
<i>Of which, manufacturing</i>	8.7	10.8	11.2	13.0	14.1	9.8	7.9	9.4	8.7	7.6	7.4
Construction	10.3	10.1	10.8	11.2	11.1	12.0	6.6	12.5	11.6	11.1	10.4
Motor Trades	4.7	4.8	5.0	4.9	4.8	4.9	2.5	4.3	4.8	4.9	3.8
Wholesale	5.0	8.6	7.4	7.7	7.8	6.5	8.5	7.1	5.9	5.0	4.9
Retail	16.4	16.1	15.6	13.2	13.3	11.3	11.1	10.4	12.2	13.6	14.0
Hotels & Catering	9.3	6.9	7.3	6.4	6.1	6.4	5.4	5.3	7.5	8.7	8.7
Transport	4.7	4.3	4.9	4.6	4.0	4.4	3.2	3.6	3.4	4.0	3.7
Post & Telecommunications	0.4	0.6	0.6	0.7	0.8	0.7	0.8	0.8	0.5	0.4	0.4
Finance	0.3	0.6	0.4	0.4	0.5	0.6	2.1	0.6	0.4	0.3	0.5
Property & Business Services	16.5	24.0	18.6	19.5	20.5	21.3	37.3	31.2	21.2	13.8	19.2
Education	0.5	0.5	0.5	0.5	0.5	0.5	0.5	0.6	0.5	0.4	0.5
Health	0.6	0.5	0.5	0.5	0.5	0.6	0.6	0.6	0.7	0.6	0.5
Public Administration & Other Services	7.9	7.4	7.5	7.1	7.1	7.5	12.9	9.3	7.7	6.2	9.1

COMPARISONS WITH REPUBLIC OF IRELAND

The Central Statistics Office (CSO) in the Republic of Ireland is developing a business register similar to the IDBR, under the European Union regulation 2186/93 on harmonisation of business registers for statistical purposes.

Table 12 shows figures from this developing register. Care should be taken when comparing these figures with those in Table 4 of this booklet, as explained in the following notes.

Notes:

1. Article 3 of Council Regulation 2186/93 allows member states to optionally collect data on those enterprises whose main activity falls within Public Administration and Defence. The CSO does not collect data from the Government sector which includes enterprises within the transport, financial intermediation, public administration, education and health sections. Consequently, the number of enterprises and the number of employees are understated in these particular sections.
2. Data for the production industries are taken from the Census of Industrial Production 1997. Data for all other sections are from the Business Register at 31 December 1998. No figures are available for the agriculture and fishing sections.
3. Data are taken from a developing Register and may underestimate some sectors of the economy.

Table 12 Figures from the Republic of Ireland business register

Industrial classification	Enterprises	% of total	Employees	% of total
Mining and Quarrying	60	0.0	5,595	0.6
Manufacturing	4,445	3.6	239,345	24.2
Electricity, Gas and Water Supply	10	0.0	10,100	1.0
Construction	11,030	8.8	71,215	7.2
Wholesale and Retail Trade	41,900	33.5	236,630	24.0
Hotels and Restaurants	20,890	16.7	128,515	13.0
Transport, Storage and Communication	5,895	4.7	34,380	3.5
Financial Intermediation	1,920	1.5	18,215	1.8
Real Estate, Renting and Business Activities	21,635	17.3	129,750	13.1
Public Administration and Defence	45	0.0	590	0.1
Education	750	0.6	5,000	0.5
Health	4,570	3.6	24,675	2.5
Other Services	12,050	9.6	83,330	8.4
Total	125,195		987,330	

Source: Central Statistics Office, Republic of Ireland

VAT REGISTRATIONS AND DE-REGISTRATIONS

The Department of Trade and Industry's SME Statistics Unit publish statistics on VAT registrations and de-registrations for UK regions annually, having taken the information from the IDBR. The statistics are the best official guide to the pattern of business start-ups and closures. Coverage includes both companies and self-employed run businesses but excludes those businesses that operate below the VAT threshold – for example, most of the very smallest one-person businesses.

Table 13 shows the number of businesses that registered and de-registered for VAT throughout the United Kingdom for the period 1994-1998. These figures are an indicator of the level of entrepreneurship and of the health of the business population. Many factors influence the pattern of business start-ups. Among the most important are economic growth (encouraging new ventures and creating demand for business and personal services), the level of industrial restructuring and contracting out, and the stock of people with management or small business experience. Businesses de-registering from VAT do so due to closure, or (in a minority of cases) because turnover has fallen below the registration threshold. Closure does not necessarily involve bankruptcy or insolvency proceedings, which make up only around one in four closures throughout the UK.

Table 13 VAT registrations and de-registrations by UK region, 1994-1998

Region	1994		1995		1996		1997		1998	
	Reg.	De-reg.	Reg.	De-reg.	Reg.	De-reg.	Reg.	De-reg.	Reg.	De-reg.
North East	4,455	5,150	4,085	5,055	4,085	4,505	4,170	4,390	4,215	4,035
North West	16,470	19,490	15,915	18,435	16,475	17,245	18,120	17,120	18,595	16,115
North West (GOR)	13,950	16,665	13,480	15,535	13,695	14,430	14,880	14,515	15,190	13,810
Merseyside	2,520	2,825	2,435	2,900	2,780	2,815	3,240	2,605	3,405	2,305
Yorks & The Humber	11,620	13,565	11,095	13,210	11,315	12,000	11,825	12,250	11,820	11,350
East Midlands	10,860	11,905	10,695	11,445	10,845	11,365	11,745	11,235	11,895	10,695
West Midlands	13,665	15,215	13,290	14,670	13,295	13,670	13,635	13,885	15,030	13,335
Eastern	16,070	18,115	16,010	16,530	16,140	15,600	18,270	15,750	17,920	15,200
London	32,530	33,240	32,650	29,055	34,055	29,320	37,165	28,295	39,670	28,375
South East (GOR)	27,360	29,680	26,470	27,085	27,055	25,680	29,955	25,665	29,915	22,985
South West	14,155	16,960	12,955	15,465	13,840	14,315	15,315	14,400	15,545	13,845
England	147,190	163,325	143,165	150,965	147,105	143,705	160,200	142,990	164,605	135,935
Wales	6,280	8,545	5,985	7,125	6,105	6,750	6,240	6,320	6,135	6,240
Scotland	11,345	12,560	11,195	12,020	11,275	11,535	12,280	11,540	11,825	10,930
Northern Ireland	3,425	3,710	3,615	3,120	3,715	3,080	3,850	3,605	3,685	2,825
United Kingdom	168,240	188,140	163,960	173,230	168,200	165,065	182,570	164,455	186,250	155,930

Source: DTI SME Statistics Unit

Northern Ireland is one of only four regions throughout the United Kingdom that has seen an increase in the number of businesses registered for VAT during the period 1994-1998 (Table 14 and Figure 5).

Table 14 Business stock: VAT registered enterprises by UK region, 1994-1998

Region	1994		1995		1996		1997		1998	
	Stock	Net change	Stock	Net change	Stock	Net change	Stock	Net change	Stock	Net change
North East	44,120	-695	43,425	-970	42,455	-420	42,035	-220	41,815	180
North West	162,900	-3,025	159,875	-2,520	157,355	-770	156,585	995	157,580	2,480
North West (GOR)	140,245	-2,715	137,530	-2,055	135,475	-735	134,740	360	135,100	1,380
Merseyside	22,655	-310	22,345	-465	21,880	-35	21,845	635	22,480	1,100
Yorks & The Humber	122,410	-1,950	120,460	-2,110	118,350	-685	117,665	-425	117,240	470
East Midlands	111,795	-1,040	110,755	-750	110,005	-520	109,485	510	109,995	1,200
West Midlands	138,145	-1,550	136,595	-1,380	135,215	-375	134,840	-245	134,595	1,695
Eastern	159,490	-2,040	157,450	-520	156,930	540	157,470	2,525	159,995	2,720
London	242,175	-710	241,465	3,590	245,055	4,735	249,790	8,870	258,660	11,295
South East (GOR)	243,370	-2,315	241,055	-615	240,440	1,375	241,815	4,300	246,115	6,930
South West	152,870	-2,805	150,065	-2,505	147,560	-475	147,085	930	148,015	1,700
England	1,377,275	-16,130	1,361,145	-7,780	1,353,365	3,405	1,356,770	17,240	1,374,010	28,670
Wales	79,465	-2,265	77,200	-1,140	76,060	-645	75,415	-80	75,335	-105
Scotland	119,825	-1,215	118,610	-825	117,785	-260	117,525	740	118,265	895
Northern Ireland	52,665	-285	52,380	495	52,875	635	53,510	245	53,755	860
United Kingdom	1,629,230	-19,895	1,609,335	-9,250	1,600,085	3,135	1,603,220	18,145	1,621,365	30,320

Source: DTI SME Statistics Unit

Figure 5 Change (%) in business stock by UK region, 1994-1998

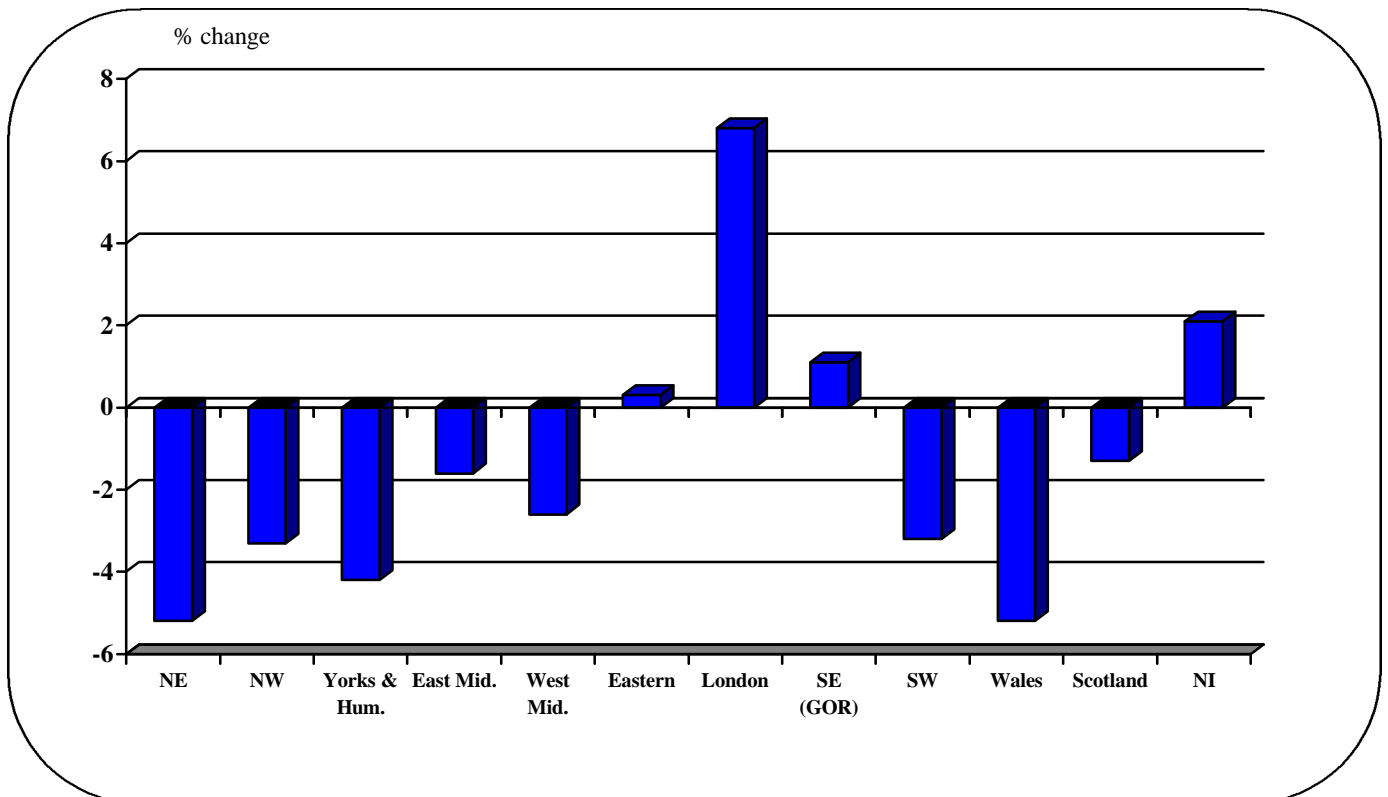


Table 15 shows the stock of VAT registered businesses for each District Council in Northern Ireland at the start of each year for the period 1994-1999. This is an indicator of the size of the business population. Derry and Limavady DCs have seen the greatest increase in enterprises registered for VAT during the period, while Belfast, Castlereagh, Newtownabbey and North Down have seen the greatest decrease.

Table 15 Enterprises registered for VAT at the start of the year 1994-1999

District Council	1994	1995	1996	1997	1998	1999	% change 1994-1999
Antrim	1,520	1,515	1,530	1,585	1,600	1,640	7.9
Ards	2,205	2,165	2,175	2,180	2,180	2,205	0.0
Armagh	2,415	2,425	2,510	2,575	2,585	2,640	9.3
Ballymena	2,290	2,275	2,285	2,295	2,285	2,300	0.4
Ballymoney	1,140	1,130	1,155	1,170	1,175	1,195	4.8
Banbridge	1,585	1,560	1,570	1,605	1,635	1,655	4.4
Belfast	6,390	6,370	6,420	6,395	6,215	6,155	-3.7
Carrickfergus	560	550	550	535	530	555	-0.9
Castlereagh	1,030	1,025	1,005	1,005	990	990	-3.9
Coleraine	1,805	1,785	1,785	1,790	1,780	1,810	0.3
Cookstown	1,740	1,730	1,765	1,810	1,845	1,870	7.5
Craigavon	2,110	2,125	2,115	2,125	2,150	2,130	0.9
Derry	1,945	1,960	2,010	2,080	2,105	2,225	14.4
Down	2,205	2,160	2,205	2,215	2,235	2,315	5.0
Dungannon	2,580	2,580	2,600	2,645	2,695	2,745	6.4
Fermanagh	3,270	3,235	3,315	3,375	3,425	3,510	7.3
Larne	1,000	990	1,000	1,005	1,030	1,050	5.0
Limavady	940	950	990	1,015	1,045	1,045	11.2
Lisburn	2,890	2,865	2,880	2,895	2,895	2,935	1.6
Magherafelt	1,810	1,810	1,830	1,860	1,910	1,970	8.8
Moyle	715	710	725	735	760	765	7.0
Newry and Mourne	3,230	3,230	3,240	3,320	3,375	3,475	7.6
Newtownabbey	1,605	1,595	1,580	1,555	1,525	1,545	-3.7
North Down	1,520	1,520	1,485	1,480	1,450	1,460	-3.9
Omagh	2,620	2,570	2,570	2,640	2,695	2,740	4.6
Strabane	1,560	1,560	1,575	1,605	1,620	1,665	6.7
Northern Ireland	52,665	52,380	52,875	53,510	53,755	54,615	3.7

Source: DTI SME Statistics Unit

Two tables follow on VAT registrations, de-registrations and net change during the period 1994-1998. Table 16 shows this by District Council and Table 17 by broad industry group.

Table 16 VAT registrations, de-registrations and net change by District Council, 1994-1998

District Council	1994			1995			1996			1997			1998		
	Reg.	De-reg.	Change	Reg.	De-reg.	Change	Reg.	De-reg.	Change	Reg.	De-reg.	Change	Reg.	De-reg.	Change
Antrim	85	90	-5	105	90	15	125	70	55	110	95	15	115	75	40
Ards	130	170	-40	150	140	10	145	140	5	170	170	0	145	120	25
Armagh	140	130	10	180	95	85	165	100	65	155	145	10	160	105	55
Ballymena	120	135	-15	120	110	10	115	105	10	125	135	-10	100	85	15
Ballymoney	60	70	-10	70	45	25	65	50	15	50	45	5	55	35	20
Banbridge	70	95	-25	75	65	10	105	70	35	110	80	30	85	65	20
Belfast	495	515	-20	585	530	55	570	595	-25	530	710	-180	550	610	-60
Carrickfergus	40	50	-10	50	50	0	55	70	-15	50	55	-5	55	30	25
Castlereagh	90	95	-5	85	105	-20	85	85	0	85	100	-15	80	80	0
Coleraine	110	130	-20	110	105	5	120	115	5	105	115	-10	115	85	30
Cookstown	95	105	-10	110	75	35	115	70	45	125	90	35	95	70	25
Craigavon	150	140	10	140	145	-5	120	110	10	175	150	25	120	140	-20
Derry	205	190	15	220	170	50	235	165	70	240	215	25	255	135	120
Down	125	165	-40	165	120	45	120	110	10	150	130	20	180	100	80
Dungannon	185	185	0	145	125	20	170	125	45	170	120	50	160	110	50
Fermanagh	165	205	-40	185	105	80	185	125	60	210	160	50	190	105	85
Larne	50	60	-10	50	45	5	60	55	5	65	40	25	60	40	20
Limavady	80	65	15	75	35	40	70	45	25	75	45	30	40	40	0
Lisburn	180	205	-25	195	175	20	190	175	15	235	235	0	190	150	40
Magherafelt	110	110	0	90	70	20	105	75	30	125	75	50	125	65	60
Moyle	45	50	-5	45	30	15	40	30	10	55	30	25	35	30	5
Newry and Mourne	215	210	5	215	210	5	245	165	80	220	165	55	245	145	100
Newtownabbey	120	130	-10	115	130	-15	115	140	-25	110	140	-30	145	125	20
North Down	150	155	-5	150	180	-30	150	155	-5	145	175	-30	125	115	10
Omagh	120	165	-45	110	110	0	165	95	70	160	105	55	130	85	45
Strabane	90	90	0	80	60	20	80	50	30	95	80	15	95	50	45
Northern Ireland	3,425	3,710	-285	3,615	3,120	495	3,715	3,080	635	3,850	3,605	245	3,685	2,825	860

Source: DTI SME Statistics Unit

Table 17 VAT registrations, de-registrations and net change by broad industry group, 1994-1998

Industry (SIC(92) Section)		1994			1995			1996			1997			1998		
		Reg.	De-reg.	Change	Reg.	De-reg.	Change	Reg.	De-reg.	Change	Reg.	De-reg.	Change	Reg.	De-reg.	Change
A,B	Agriculture, Forestry and Fishing	655	895	-240	610	305	305	640	415	225	660	325	335	510	355	155
C,E	Mining and Energy	5	10	-5	5	5	0	0	10	-10	10	5	5	5	5	0
D	Manufacturing	220	245	-25	305	260	45	350	235	115	270	315	-45	235	260	-25
F	Construction	485	440	45	465	380	85	465	325	140	545	455	90	565	335	230
G	Wholesale, Retail & Repairs	830	1,220	-390	935	1,260	-325	925	1,130	-205	920	1,325	-405	930	985	-55
H	Hotels & Restaurants	280	270	10	310	300	10	300	315	-15	315	365	-50	285	270	15
I	Transport	135	135	0	205	120	85	190	150	40	200	195	5	215	155	60
J	Finance	25	10	15	20	25	-5	20	15	5	30	15	15	15	5	10
K	Business Services	460	240	220	500	250	250	575	255	320	675	365	310	735	300	435
L,O	Other Services	290	220	70	215	205	10	215	170	45	190	175	15	160	125	35
M, N	Education, Health & Social Work	50	20	30	35	15	20	30	60	-30	35	65	-30	30	30	0
Northern Ireland		3,425	3,710	-285	3,615	3,120	495	3,715	3,080	635	3,850	3,605	245	3,685	2,825	860
Source: DTI SME Statistics Unit																

FOREIGN OWNERSHIP ANALYSES

Information from the market information company Dun and Bradstreet on foreign owned businesses operating in the United Kingdom is loaded onto the IDBR annually. Statistics Research Branch, DETI supplement this with information from two sources: (i) the Industrial Development Board's (IDB's) list of client companies (a list which gives details of businesses which have received financial assistance from the IDB and its predecessors) and (ii) a list of publicly traded US companies with subsidiaries, affiliates or branch offices employing more than ten people in Northern Ireland, published by the Investor Responsibility Research Center, Washington D.C. (The IRRC is an independent, non-profit making research firm founded in 1972.) The following tables show some of the analyses from these combined sources.

Table 18 shows the number of foreign owned businesses and the employees within them operating in Northern Ireland over the last few years. In 1999, there were approximately 430 foreign owned businesses in Northern Ireland employing almost 57,850 people. Foreign owned businesses are therefore a key player in employing local people as they employ 9.3% of all employees in Northern Ireland. 26 countries had businesses operating in Northern Ireland with the Republic of Ireland and USA owning more than 100 businesses. These two countries accounted for 53.6% of employees in foreign owned businesses.

Table 19 shows that the majority of foreign owned companies in Northern Ireland are in the manufacturing and wholesale and retail sectors. Like all businesses in Northern Ireland, the vast majority of employees in foreign owned companies work in large companies (those with 250 or more employees) but small businesses account for the majority of the foreign owned companies operating in Northern Ireland (Table 20).

Note: As the number of businesses is drawn from a number of sources, the actual numbers are given and are not disclosive. However the employee figures are taken from the IDBR and are thus subject to the usual confidentiality constraints.

Table 18 Number of foreign owned businesses operating in Northern Ireland and employees within them

Country	1996		1997		1998 ¹		1999	
	Businesses	Employees	Businesses	Employees	Businesses	Employees	Businesses	Employees
Republic of Ireland	100	12,365	109	15,740	123	15,405	139	15,134
USA	71	10,035	112	16,145	111	17,235	124	15,877
France	23	2,005	30	3,930	23	2,650	27	4,036
Netherlands (incl. Netherlands Antilles)	17	*	25	2,220	30	2,010	29	1,598
Germany	17	*	22	1,075	22	955	24	1,002
Denmark	13	*	8	*	12	*	5	*
Japan	11	*	12	*	15	*	15	*
Switzerland	10	*	7	*	5	*	10	*
Canada	8	*	7	*	9	*	9	*
Australia	7	*	7	*	6	*	4	*
South Korea	6	*	8	*	8	*	8	*
Sweden	4	*	5	*	2	*	2	*
Finland	3	*	3	*	3	*	4	*
Hong Kong	3	*	2	*	0	*	0	*
Belgium	3	*	4	*	5	*	6	*
South Africa	2	*	0	*	2	*	3	*
Luxembourg	2	*	2	*	0	*	0	*
Italy	1	*	1	*	1	*	2	*
Portugal	1	*	1	*	1	*	1	*
Norway	1	*	1	*	1	*	2	*
Liechtenstein	1	*	1	*	0	*	0	*
Channel Islands	0	*	0	*	5	*	4	*
Isle of Man	0	*	0	*	4	*	3	*
Malaysia	0	*	1	*	1	*	1	*
Bermuda	0	*	0	*	0	*	2	*
Austria	0	*	0	*	0	*	1	*
Bahamas	0	*	0	*	0	*	1	*
Taiwan	0	*	0	*	0	*	1	*
Total	304	42,810	368	55,850	389	57,465	427	57,836

¹ Figures from 1998 are not directly comparable with earlier years as Dun and Bradstreet introduced a new (and improved) system for collecting information on the country of ownership of businesses during that year.

* Figure not shown due to confidentiality constraints.

Figure 6 Countries which have more than 10 businesses operating in Northern Ireland, 1999

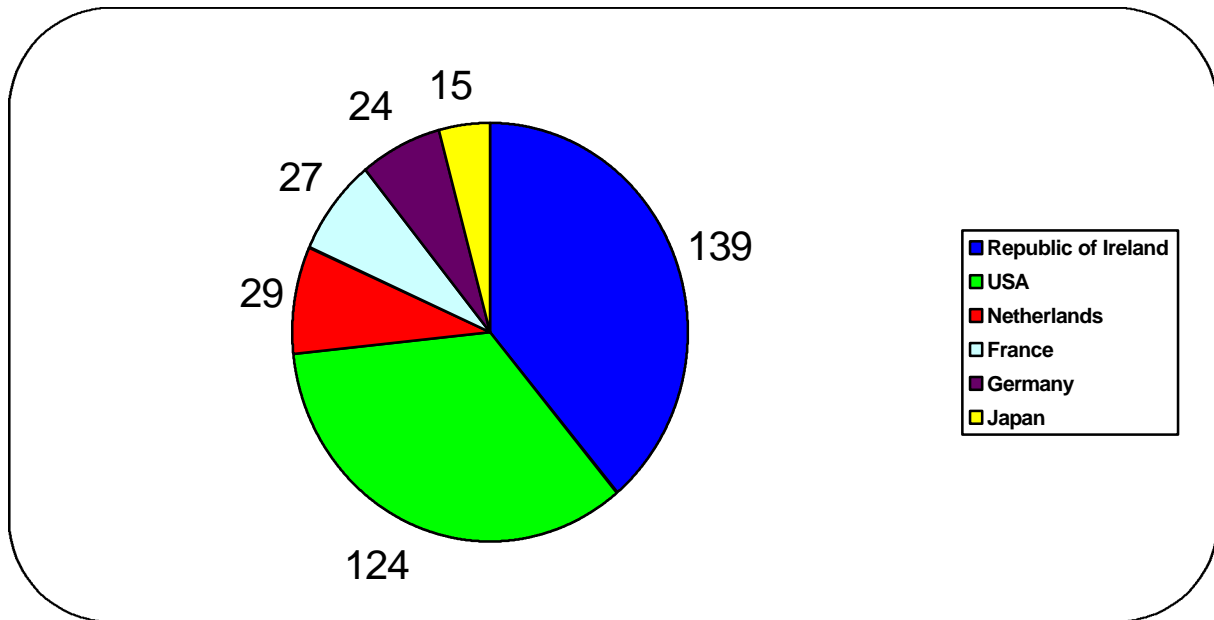


Table 19 Number of foreign owned companies by broad industry group, 1999

SIC(92) Section	Companies	Employees
A,B Agriculture, hunting and forestry	2	*
C Mining and quarrying	4	*
D Manufacturing	144	34,047
E Electricity, gas and water supply	3	*
F Construction	22	1,012
G Wholesale and retail trade	134	9,691
H Hotels and restaurants	7	*
I Transport, storage and communication	24	1,270
J Financial intermediation	30	5,573
K Real estate, renting and business activities	54	3,370
N Health and social work	1	*
O Other community, social and personal service activities	2	*
Total	427	57,836

Table 20 Number of foreign owned companies by employee sizeband, 1999

Sizeband	1-9	10-19	20-49	50-99	100-199	200-249	250-499	500+	Total
Companies	135	50	78	53	45	15	29	22	427
Employees	581	679	2,481	3,733	6,432	*	10,430	30,232	57,836

FURTHER INFORMATION

If you have any further questions about the IDBR.

Contact: Ian Gallagher,
Statistics Research Branch, Department of Enterprise, Trade and Investment,
Netherleigh, Massey Avenue, Belfast BT4 2JP

Telephone: 028 9052 9430 Fax: 028 9052 9459
E-mail: ian.gallagher@detini.gov.uk

If you would like ad-hoc analyses run from the IDBR.

Contact: Business Registers Unit, Room 1.062,
Office for National Statistics, Government Buildings,
Cardiff Road, Newport South Wales NP9 1XG

Telephone: 0800 731 5761 or 01633 813269 Fax: 01633 812477
E-mail: claire.powell@ons.gov.uk

Please note that ONS will charge for this service and data will be subject to disclosure checks before being released. For further details of the analyses/samples available from the IDBR, see Annex 3, or visit the ONS website at www.ons.gov.uk where you should choose “Products & Services”, then choose “Services” and then choose “ONS Business Register”.

If you have any further questions about VAT registrations and de-registrations.

Contact: SME Statistics Unit, Department of Trade and Industry,
Level 2, St Mary’s House, Moorfoot, Sheffield S1 4PQ

Telephone: 0114 259 7538 Fax: 0114 259 7505
E-mail: Ian.Dale@SFSH-Sheffield.dti.gov.uk

If you have any further questions about the Republic of Ireland’s Business Register.

Contact: Kevin Phelan, Business Register, Central Statistics Office,
Skehard Road, Cork, Republic of Ireland

Telephone: 00 353 21 453 5208 Fax: 00 353 21 453 5299
E-mail: Kevin.Phelan@cso.ie

For other information on economic statistics.

Contact: Statistics Research Branch, Department of Enterprise, Trade and Investment,
Netherleigh, Massey Avenue, Belfast BT4 2JP

Telephone: 028 9052 9399/9897/9494 Fax: 028 9052 9459
Web site: www.detini.gov.uk/statsres

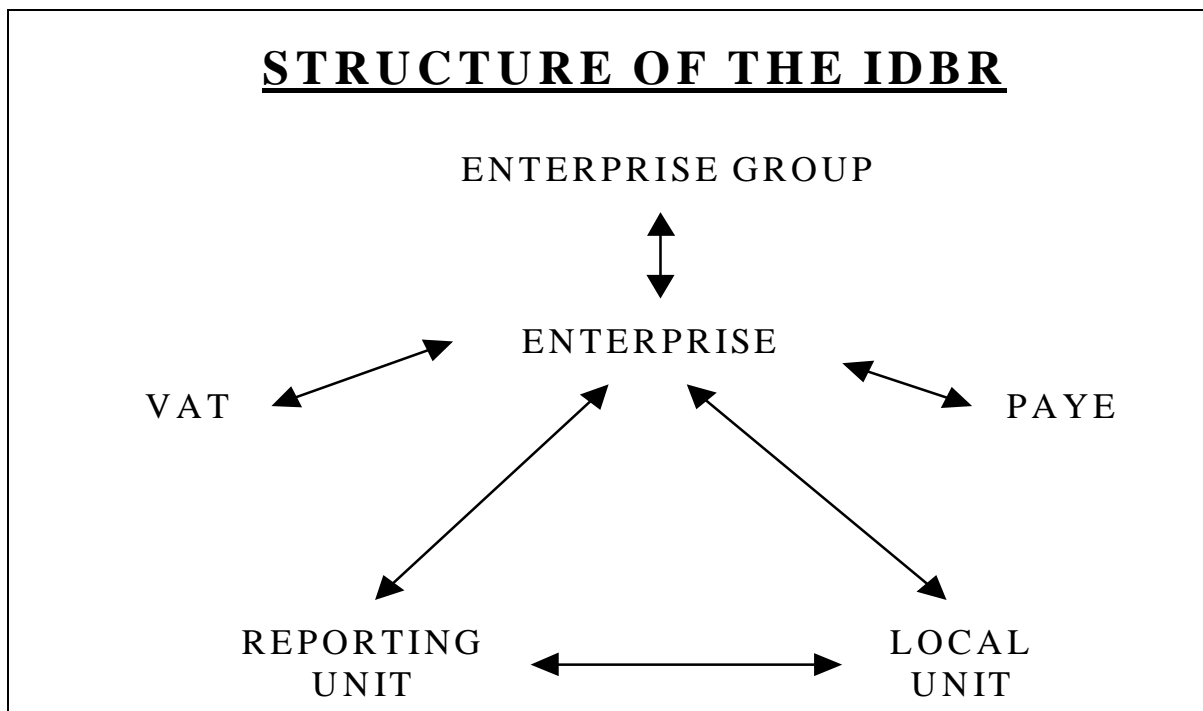
ANNEX 1 IDBR STRUCTURE

Business structures are complex and are based on administrative procedures that are often not suitable for statistical inquiries. The VAT unit is there simply to facilitate the collection of VAT and some employers maintain separate PAYE schemes for salaried and non-salaried workers, giving two administrative units for the same workplace. For these reasons the administrative data are mapped onto statistical units for the purpose of statistical inquiries.

Thus there are two types of business units on the IDBR - the administrative unit and the statistical unit. The administrative units are the VAT and PAYE units from which the statistical units (enterprise group, enterprise and local unit(s)) are generated. Finally the reporting unit holds the mailing address to which inquiry forms are sent, and displays summary information, such as the latest turnover figure, the number of local units and employees within the enterprise and a contact name and telephone/fax number (if available).

The structure of a business can be thought of as being made up of "layers," with the enterprise group forming the "top layer," therefore providing the overall picture of all enterprises within the group. The enterprise forms the next "layer" with data for an individual business collected from the administrative units ("lower layers") attached.

Information is received from the data sources (i.e. VAT, PAYE and local units) and fed up to the enterprise, and up to the enterprise group. The links between the various units can be seen in the diagram below and they are described in further detail in Annex 2.



ANNEX 2 GLOSSARY OF IDBR TERMS AND ABBREVIATIONS

The IDBR uses a number of terms to describe a business, which are explained below.

Enterprise Group

An enterprise group is a group of legal units/enterprises under common ownership. It contains aggregate information on the number of companies and employees in the group, as well as the total turnover and foreign ownership details. For example, Short Brothers plc and Belfast City Airport are in the same enterprise group.

Enterprise

An enterprise is the smallest combination of legal units under common ownership (generally based on VAT or PAYE) which have a certain degree of autonomy within an enterprise group. It is the statistical unit that most closely equates to a business. It holds aggregated information gathered from administrative and statistical sources within that enterprise to give an overall picture of what is going on in the business. For example, Short Brothers plc is an enterprise.

VAT

HM Customs and Excise notifies ONS of all new businesses which are above the VAT threshold (currently an annual taxable turnover limit of £52,000) and those businesses which are below the threshold but have chosen to register voluntarily for VAT. IDBR section receives a monthly list of such businesses in Northern Ireland and issues proving forms to them. Once the information is received, the IDBR is updated and the business then becomes available for selection for statistical inquiries.

PAYE

Inland Revenue notifies ONS of all employers with employees earning above the income tax threshold (i.e. operating PAYE schemes). IDBR section receives a quarterly list of such companies in Northern Ireland and proves them in the same way as for VAT traders.

Local Unit

A local unit is an individual site (factory, shop, office, etc.) at which an enterprise conducts its business. For example, the Queens Island site of Short Brothers plc is a local unit.

Reporting Unit

The reporting unit holds the mailing address to which inquiry forms are sent, and displays summary information, such as the latest turnover figure, the number of local units and employees within the enterprise and a contact name and telephone/fax number (if available). It also holds information on what statistical inquiries the enterprise has been selected for. There are two types of reporting units in Northern Ireland - (i) an enterprise reporting unit reports for all the local units within the enterprise (for example, Short Brothers plc will include local units for the Queen's Island, Dunmurry and Newtownards sites) and (ii) a local unit list reporting unit reports on a specified list of local units and these usually distinguish multinational companies operating in Northern Ireland. For example, Marks and Spencer have one reporting unit for activity in Great Britain and another for activity in Northern Ireland.

Proved/Proven Unit

A proved/proven unit is any enterprise on the IDBR which has a live local unit attached to it. The employee information for the local unit(s) comes from sources such as the Northern Ireland Census of Employment, the Northern Ireland Quarterly Employment Survey, regular and miscellaneous proving exercises and other surveys conducted by Statistics Research Branch, DETI and ONS. Other proved/proven units include those enterprises which are limited companies but have 0 employees, the business being conducted by working directors or staff paid by another business which the parent enterprise owns. Such enterprises are proven, as are self-employed persons and partnerships who may also have 0 employees.

Unproved/Unproven Unit

Conversely, an unproved/unproven unit is any enterprise on the IDBR that does not have a local unit attached to it **and** which has not been selected for the Northern Ireland Census of Employment or regular and miscellaneous proving exercises.

IDBR section in Statistics Research Branch continually prove new businesses and also issue forms to those businesses which are imputed (from VAT and/or PAYE information) to have 20 or more employees.

ABBREVIATIONS

DCA District Council Areas

DETI Department of Enterprise, Trade and Investment

DTI Department of Trade and Industry

IDBR Inter Departmental Business Register

ONS Office for National Statistics

PAYE Pay As You Earn

SIC Standard Industrial Classification

VAT Value Added Tax

ANNEX 3 ANALYSES AND SAMPLES FROM THE IDBR

1. STANDARD ANALYSES FROM THE IDBR – Non-disclosive data

Analyses that are produced as part of this service are at the same level at which the business statistical surveys are conducted – i.e. business level or local unit (work site) level.

Data available

Tables can be produced at two levels:

- Business level
- Local unit (work site) level

Variables available are:

- Count
- Employment
- Employees
- Turnover (at business level only)

The table can be based on:

- Employment/employees/turnover sizebands
- Classification (sic92)
- Status (public/private sector)
- Location (e.g. government office region, district council, postcode etc).

Disclosure

All data must be non-disclosive (i.e. must not lead to the identification of an individual business). All figures will, therefore, be rounded to the nearest 5. Where the count is less than 20 and employment/employees/turnover are shown the employment/employees/turnover will be removed. Where ONS remove one in a row or column another will be automatically removed to avoid disclosure by deduction.

Other Issues

- Charging

Charges for work done are in line with the ONS charging policy, which is currently £60 per hour (plus VAT where applicable). Additional charges will be made for data that will be published commercially or for resale.

- Timeliness of data

Annual extracts are taken from the IDBR. These are available to analyse once the “PA1003 Size Analysis of United Kingdom Businesses” has been published. The latest published data is 1999.

- Timescale

ONS aim to despatch the standard analysis within 2 weeks from confirmation of job. The timescale for special requirements would be subject to discussion.

2. STANDARD ANALYSES FROM THE IDBR – Samples (disclosive data)

Samples

The easiest way to select a sample is to use the standard sampling suite of programs on the IDBR. This selects units from the register at the business level. The user should indicate their specification from the following options:

- Employment/employee sizebands
- Classification (SIC92) ranges
- Government Office Region (GOR) range

The standard sampling suite runs selections overnight on Tuesday and weekend nights. All sampling requests would run on this cycle.

Population counts (for grossing) will be taken at the same time as the sample.

Data Available

Data for standard analyses are available at business level. Variables available are:

Reference number

Name

Trading Style

Address and postcode

Legal status

Employment

Employees

Turnover

Classification

Location (also lower levels are available e.g. county, district, unitary authority)

Legal Issues

- Disclosive data can only be released to authorised outside bodies and contractors working for government departments.
- A form must be signed which confirms that:
 - the data will only be used for the purpose agreed with ONS.
 - the data will be kept secure.
 - the data will not be disclosed to any third party without ONS' permission.
 - legal sanctions against unlawful disclosure will be imposed.

Other Issues

- Charges

Current ONS charges are £60 per hour (plus VAT if required electronically). Additional charges will be made for data that will be published commercially or for resale.

- Timeliness of data

Data are provided from the live IDBR at the time of request or from fixed extracts that are taken once a year in April. Population counts are produced to be consistent with those timescales.

- Timescale

Data will be despatched within 4 weeks from confirmation of job.

3. STANDARD ANALYSES FROM THE IDBR – Disclosive data

Data available

Data for standard analyses are available at business level. Variables available are:

Reference number

Name

Trading Style

Address and postcode

Legal status

Employment

Employees

Turnover

Classification (sic92)

Location (e.g. government office region, county, district, unitary authority etc)

Legal Issues

- Disclosive data can only be released to authorised outside bodies and contractors working for government departments.
- A form must be signed which confirms that:
 - the data will only be used for the purpose agreed with ONS.
 - the data will be kept secure.
 - the data will not be disclosed to any third party without ONS' permission.
 - legal sanctions against unlawful disclosure will be imposed.

Other issues

- Charges

Current ONS charges are £60 per hour (plus VAT if required electronically). Additional charges will be made for data that will be published commercially or for resale.

- Timeliness of data

Data are provided from the live IDBR at the time of request or from fixed extracts that are taken once a year in April. Population counts are produced to be consistent with those timescales.

- Release of data

Data can be sent as hard copy, disk or CD. Disclosive data cannot be sent by email or fax because of confidentiality issues. Once data has been passed from the ONS, it becomes the responsibility of the recipient. If confidential data is being passed to a third party under contract, then the ONS wishes to see all legal contracts before releasing the data.

- Timescale

ONS aim to despatch the standard analysis within 2 weeks from confirmation of job. The timescale for special requirements would be subject to discussion.

For further information on analyses please contact Claire Powell on ☎01633 813269 or e-mail claire.powell@ons.gov.uk

For further information on samples please contact Tim Evans on ☎01633 813126 or e-mail tim.evans@ons.gov.uk

For general IDBR queries please contact Susan Wilmott on ☎01633 813229 or e-mail idbr.helpdesk@ons.gov.uk

Or visit the ONS website at www.statistics.gov.uk where you should choose “Products & Services”, then choose “Services” and then choose “ONS Business Register”.