



Northern Ireland

Quarterly Employment Survey (QES) Supplement

December 2009 Published 17/03/2010

- The QES is a business survey that has been carried out in Northern Ireland since 1978. The QES has a sample size of approximately 5,500 and covers all employers with at least 25 employees, all public sector employers and a representative sample of smaller firms.
- The December 2009 seasonally adjusted employee jobs figure stands at 699,310.
- This represents a seasonally adjusted decrease of 0.4% (or 2,890 jobs) from the revised September 2009 estimate of 702,200.
- Over the quarter seasonally adjusted employee jobs decreased in the Service Sector by 0.2% (1,110 jobs), in the Construction Sector by 4.7% (1,700 jobs), and in the Manufacturing sector by 0.2% (120 jobs). Jobs in "Other Industries" increased by 0.2% (40 Jobs) over the quarter.
- The December 2009 seasonally unadjusted figure stands at 704,590.
- This represents an increase of 0.9% (5,970 jobs) since September 2009 and a decrease of 2.9% (20,910 jobs) in the past year.
- Over the year, December 2008 to December 2009, the unadjusted employee jobs figure for Construction decreased by 16.6% (6,870 jobs), while Manufacturing employee jobs decreased by 8.2% (6,580 jobs) and employee jobs in the Service Sector decreased by 1.2% (7,120 jobs)
- The net quarterly increase in employee jobs (5,970) is comprised of a decrease in the number of full-time employee jobs (2,600) which was countered by an increase in the number of part-time employee jobs (8,570).



A NATIONAL STATISTICS PUBLICATION

National Statistics are produced to high professional standards set out in the National Statistics Code of Practice. They undergo regular quality assurance reviews to ensure that they meet customer needs. They are produced free from any political interference.

For general enquiries about National Statistics, contact
The National Statistics Public Enquiry Service on **0845 601 3034**
minicom: 01633 812399
E-mail: info@statistics.gov.uk
Fax: 01633 652747
Letters: Room 1015, Government Buildings, Cardiff Road, Newport,
Gwent, South Wales NP10 8XG

You can also find National Statistics on the Internet – go to
www.statistics.gov.uk

Department of Enterprise,
Trade and Investment

**Northern Ireland
Quarterly Employment Survey (QES)
Supplement**

December 2009

Crown Copyright

Contents

1

Executive Summary
Page 1

2

NI Employee Jobs
Page 2-4

3

2-Digit Breakdown
Pages 5-7

4

Public Sector Data
Page 8

5

Unadjusted & Seasonally Adjusted Series
Page 9-10

6

Special Features
Page 11-13

7

Notes to Editors
Page 14

Executive Summary

1

Introduction

This bulletin presents data from the Northern Ireland Quarterly Employment Survey (QES), which is conducted by Statistics Research Branch of the Department of Enterprise, Trade and Investment (DETI).

The QES provides short-term employee jobs estimates for Northern Ireland, which are then used by the Office for National Statistics (ONS) to feed into the calculation of the quarterly workforce jobs estimates for the United Kingdom as a whole.

The QES covers all public sector bodies, all private sector firms with 25 or more employees and a sample of the remainder. The sample size is designed such that estimates of total employee jobs should be accurate to within +/- 1% of the Census of Employment total. The survey collects information on the number of males/females in full-time and part-time employment by business activity. The results are then collated into industry classes using the 2007 Standard Industrial Classification (SIC07).

It should be noted that the survey counts the number of jobs rather than the number of persons with jobs. For example, a person holding both a full-time job and part-time job, or someone with two part-time jobs, will be counted twice.

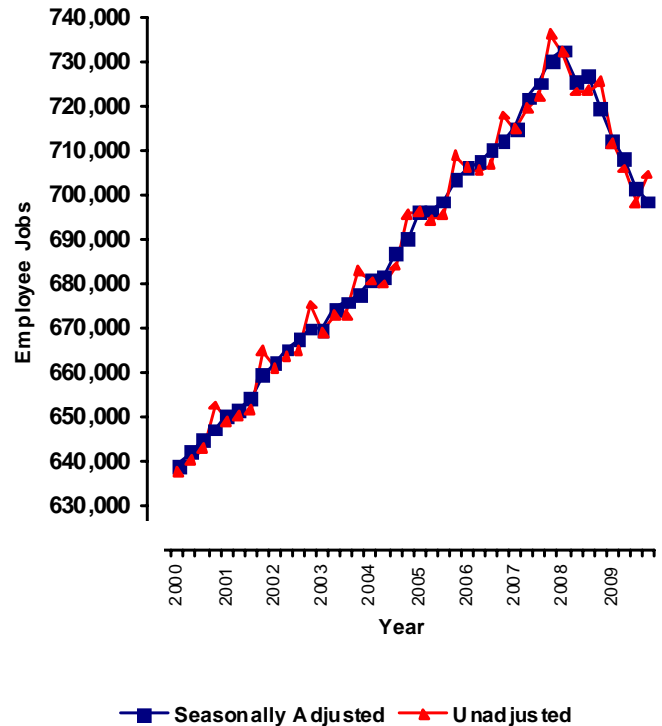
Seasonally Adjusted

The December 2009 seasonally adjusted employee jobs figure stands at 699,310.

This represents a seasonally adjusted decrease of 0.4% (or 2,890 jobs) from the revised September 2009 estimate of 702,200.

Over the quarter seasonally adjusted employee jobs decreased in the Service Sector by 0.2% (1,110 jobs), in the Construction Sector by 4.7% (1,700 jobs), and in the Manufacturing sector by 0.2% (120 jobs). Jobs in, "Other Industries", increased by 0.2% (40 Jobs) over the quarter.

Fig 1.0 Employee Jobs Seasonally Adjusted / Unadjusted 2000 - 2009



Unadjusted

The December 2009 seasonally unadjusted figure stands at 704,590.

This represents an increase of 0.9% (5,970 jobs) since September 2009 and a decrease of 2.9% (20,910 jobs) in the past year.

Over the year, December 2008 to December 2009, the unadjusted employee jobs figure for Construction decreased by 16.6% (6,870 jobs), while Manufacturing employee jobs decreased by 8.2% (6,580 jobs) and employee jobs in the Service Sector decreased by 1.2% (7,120 jobs)

Date of Next Publication

Quarterly Employment Survey results for Quarter 1 2010 will be published on Wednesday 16th June 2010.

NI Employee Jobs

2

Data are NOT adjusted for seasonality unless otherwise stated

Employee Jobs from the Quarterly Employment Survey

Table 1.1 below provides a summary of the latest results from the Quarterly Employment Survey. It shows that in December 2009 there were an estimated 704,590 employee jobs in Northern Ireland.

Table 1.1 NI Employee Jobs, Full-time/Part-time Split, December 2009

	Male		Female		Total	% change in total	
	Full Time	Part Time	Full Time	Part Time		Since last quarter	Since last year
Manufacturing	55,930	1,650	13,130	3,050	73,760	-0.4%	-8.2%
Construction	29,330	1,130	2,630	1,500	34,580	-4.1%	-16.6%
Services	170,850	57,140	167,340	180,160	575,480	1.4%	-1.2%
Other ¹	10,250	7,720	1,530	1,290	20,780	0.2%	-1.6%
Total	266,350	67,640	184,620	185,990	704,590	0.9%	-2.9%

¹ Covers Industry Sections A, B, C and E

* Figures are rounded to the nearest 10 and may not sum due to rounding

Fig 1.1 shows the Male/Female, Full-time/Part-time breakdown of employee jobs in Northern Ireland, as at December 2009. Female employee jobs account for just over half of all employee jobs in NI (370,610 female employee jobs, compared to 333,980 males). There is, however, a significant difference in the working patterns of male and female employees. Just over half (50.2%) of female employee jobs are part-time, whereas only 20.3% of male employees work on a part-time basis.

Fig 1.1 Composition of Employee Jobs, December 2009

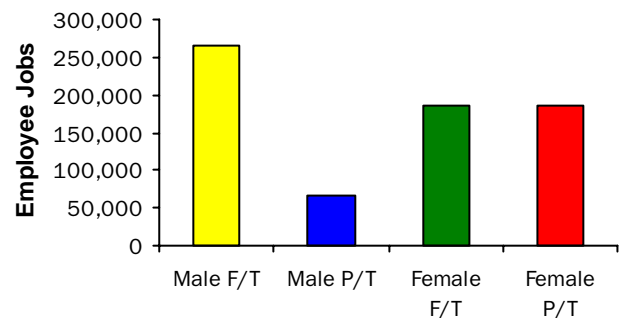


Fig 1.2 shows the annual and quarterly changes in employee jobs. Between September 2009 and December 2009 the number of employee jobs in NI rose by 0.9% (5,970 jobs). This consisted of an increase in the Service Sector (7,700), and decreases in both Construction (-1,460) and in Manufacturing (-300).

Between December 2008 and December 2009 the number of employee jobs decreased by 2.9% (20,910). This consisted of decreases in Construction (-6,870), Manufacturing (-6,580) and the Service Sector (-7,120), and also in Other Industries (-340).

Fig 1.2 Annual and Quarterly Changes in Employee Jobs

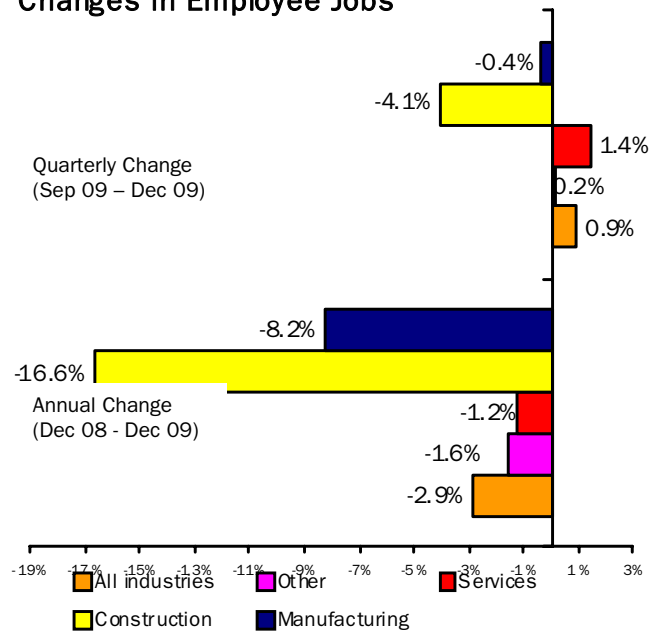


FIG 1.3 Employee Jobs, Male/Female, Full-Time/Part-Time Split, December 2009

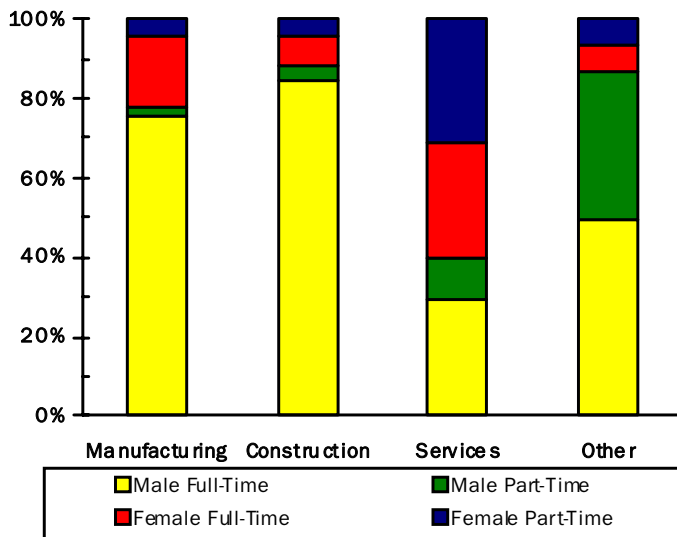


Fig 1.3 shows the male/female, full-time/part-time split for each broad industry sector within Northern Ireland. It highlights the large proportion of employee jobs in the Manufacturing and Construction Sectors that are occupied by male full-time employees (75.8% for Manufacturing, 84.8% for Construction). In contrast, females occupy 60.4% of the 575,480 employee jobs within the Service Sector. These female jobs within Services are in turn divided fairly evenly between full-time (48.2%) and part-time (51.8%) workers.

Table 1.2 on page 4 shows Employee Jobs by Industry Section for December 2009. Comparative figures for the previous quarter (September 2009) and for the previous year (December 2008) are also included.

Table 1.2 N.I. Employee Jobs by Industry Section

	SIC 07 Sections	December 2008 (Revised)			September 2009 (Revised)			December 2009 (Provisional)		
		Male	Female	Total	Male	Female	Total	Male	Female	Total
Agriculture, Forestry and Fishing	A	10,730	1,690	12,420	10,610	1,700	12,300	10,670	1,700	12,380
Mining and quarrying	B	1,710	230	1,940	1,560	210	1,770	1,550	220	1,770
Manufacturing	C	63,150	17,190	80,330	57,840	16,230	74,060	57,580	16,180	73,760
Electricity, gas, steam and air conditioning supply	D	1,750	450	2,200	1,740	450	2,190	1,740	460	2,190
Water supply, sewerage, waste management and remediation activities	E	4,110	450	4,560	4,030	450	4,480	4,010	440	4,450
Construction	F	36,660	4,790	41,450	31,790	4,250	36,040	30,450	4,130	34,580
Wholesale and retail trade; repair of motor vehicles and motorcycles	G	59,580	71,430	131,010	56,210	66,240	122,450	58,780	69,620	128,400
Transportation and storage	H	20,780	5,470	26,250	19,690	5,140	24,830	20,120	5,140	25,260
Accommodation and food service activities	I	18,350	23,820	42,170	17,970	23,280	41,250	17,960	23,270	41,230
Information and communication	J	10,850	5,470	16,330	10,380	5,290	15,670	9,960	4,960	14,920
Financial and insurance activities	K	7,310	12,750	20,060	7,030	12,300	19,330	7,010	12,090	19,100
Real estate activities	L	2,960	3,420	6,370	3,020	3,530	6,540	2,970	3,470	6,440
Professional, scientific and technical activities	M	10,980	13,340	24,330	10,710	13,010	23,720	10,520	12,830	23,350
Administrative and support service activities	N	23,570	19,420	42,990	21,920	18,350	40,270	21,390	17,820	39,210
Public administration and defence; compulsory social security	O	30,910	27,410	58,320	31,050	27,800	58,850	31,080	27,870	58,950
Education	P	17,300	55,110	72,410	16,770	53,810	70,570	17,380	57,040	74,420
Human health and social work activities	Q	18,710	96,480	115,190	19,640	97,590	117,230	19,380	98,210	117,590
Arts, entertainment and recreation	R	6,940	6,730	13,670	7,010	6,890	13,900	6,840	6,720	13,560
Other service activities	S	4,760	8,740	13,510	4,650	8,530	13,170	4,600	8,460	13,060
TOTAL	A-S	351,110	374,400	725,500	333,620	365,010	698,620	333,980	370,610	704,590

* Figures are rounded to the nearest 10 and may not sum due to rounding
Full-time/Part-time estimates available on request

2-Digit Breakdown

3

Data are NOT adjusted for seasonality unless otherwise stated

Table 1.3 N.I. Employee Jobs by 2-digit SIC07 Class December 2009

Standard Industrial Classification 2007	Class	Male			Female			All Persons
		Full Time	Part Time	All Males	Full Time	Part Time	All Females	
Crop and animal production, hunting and related service activities	01	2,760	7,560	10,320	540	1,060	1,600	11,920
Forestry and logging	02	250	10	260	40	30	70	330
Fishing and aquaculture	03	80	20	100	20	10	30	130
Mining of coal and lignite	05	0	0	0	0	0	0	0
Extraction of crude petroleum and natural gas	06	0	0	0	0	0	0	0
Mining of metal ores	07	0	0	0	0	0	0	0
Other mining and quarrying	08	1,520	30	1,550	170	50	220	1,770
Mining support service activities	09	0	0	0	0	0	0	0
Manufacture of food products	10	10,850	690	11,540	4,380	1,170	5,550	17,090
Manufacture of beverages and tobacco products	11/12	1,280	10	1,300	490	50	540	1,830
Manufacture of textiles	13	970	30	1,000	300	110	420	1,420
Manufacture of wearing apparel	14	270	30	300	460	120	580	890
Manufacture of leather and related products	15	10	20	30	20	30	40	70
Manufacture of wood and of products of wood and cork, except furniture; manufacture of articles of straw and plaiting materials	16	2,450	90	2,540	220	100	330	2,860
Manufacture of paper and paper products	17	1,340	10	1,350	280	40	330	1,680
Printing and reproduction of recorded media	18	1,050	30	1,070	390	120	520	1,590
Manufacture of coke and refined petroleum products	19	30	0	30	10	0	10	40
Manufacture of chemicals and chemical products	20	1,350	50	1,390	380	80	460	1,860
Manufacture of basic pharmaceutical products and pharmaceutical preparations	21	980	10	980	580	30	610	1,590
Manufacture of rubber and plastic products	22	4,800	50	4,860	950	190	1,140	5,990
Manufacture of other non-metallic mineral products	23	3,950	110	4,060	650	130	790	4,850
Manufacture of basic metals	24	340	10	350	30	10	40	390
Manufacture of fabricated metal products, except machinery and equipment	25	5,720	140	5,860	530	270	800	6,660
Manufacture of computer, electronic and optical products	26	2,740	20	2,760	830	80	910	3,670
Manufacture of electrical equipment	27	2,890	20	2,910	550	70	620	3,530
Manufacture of machinery and equipment n.e.c.	28	3,860	60	3,920	440	130	570	4,490
Manufacture of motor vehicles, trailers and semi-trailers	29	2,410	20	2,430	160	30	190	2,610
Manufacture of other transport equipment	30	5,690	100	5,800	800	70	870	6,670
Manufacture of furniture	31	2,100	100	2,200	330	120	450	2,650
Other manufacturing	32	560	30	590	310	90	400	990
Repair and installation of machinery and equipment	33	290	20	310	30	20	40	350
Electricity, gas, steam and air conditioning supply	35	1,730	10	1,740	420	30	460	2,190
Water collection, treatment and supply	36	590	0	590	0	0	0	590
Sewerage	37	220	0	220	30	10	50	270
Waste collection, treatment and disposal activities; materials recovery	38	3,100	100	3,200	310	80	390	3,590
Remediation activities and other waste management services	39	0	0	0	0	0	0	0
Construction of buildings	41	7,740	440	8,170	880	560	1,440	9,610
Civil engineering	42	6,450	120	6,570	570	180	750	7,320
Specialised construction activities	43	15,140	580	15,710	1,170	760	1,930	17,650
Wholesale and retail trade and repair of motor vehicles and motorcycles	45	8,450	720	9,170	1,260	700	1,960	11,130

Standard Industrial Classification 2007	Class	Male			Female			All Persons
		Full Time	Part Time	All Males	Full Time	Part Time	All Females	
Wholesale trade, except of motor vehicles and motorcycles	46	14,930	990	15,920	4,370	1,760	6,130	22,050
Retail trade, except of motor vehicles and motorcycles	47	16,480	17,220	33,690	18,700	42,830	61,530	95,220
Land transport and transport via pipelines	49	10,340	1,410	11,750	1,090	1,050	2,140	13,880
Water transport	50	360	10	370	140	30	170	540
Air transport	51	270	20	290	230	120	350	640
Warehousing and support activities for transportation	52	3,030	350	3,380	920	400	1,320	4,710
Postal and courier activities	53	3,150	1,180	4,330	550	610	1,160	5,490
Accommodation	55	2,300	2,000	4,300	2,360	2,780	5,140	9,440
Food and beverage service activities	56	6,140	7,520	13,660	5,470	12,650	18,130	31,790
Publishing activities	58	1,060	50	1,110	670	230	900	2,010
Motion picture, video and television programme production, sound recording and music publishing activities	59	350	280	640	220	320	540	1,170
Programming and broadcasting activities	60	580	70	650	400	120	520	1,170
Telecommunications	61	2,250	190	2,430	690	350	1,040	3,470
Computer programming, consultancy and related activities	62	4,980	110	5,090	1,570	380	1,950	7,030
Information service activities	63	30	10	40	10	20	30	70
Financial service activities, except insurance and pension funding	64	4,710	220	4,930	5,520	2,950	8,470	13,390
Insurance, reinsurance and pension funding, except compulsory social security	65	680	40	720	850	310	1,160	1,870
Activities auxiliary to financial services and insurance activities	66	1,270	100	1,360	1,820	650	2,470	3,830
Real estate activities	68	2,680	290	2,970	2,440	1,020	3,470	6,440
Legal and accounting activities	69	2,290	170	2,450	5,160	1,790	6,950	9,400
Activities of head offices; management consultancy activities	70	1,110	140	1,240	1,020	400	1,430	2,670
Architectural and engineering activities; technical testing and analysis	71	3,540	180	3,720	1,110	440	1,540	5,260
Scientific research and development	72	1,090	30	1,120	650	110	760	1,880
Advertising and market research	73	300	260	560	260	430	690	1,250
Other professional, scientific and technical activities	74	800	50	850	450	200	650	1,500
Veterinary activities	75	520	60	570	520	290	820	1,390
Rental and leasing activities	77	1,210	250	1,460	330	310	640	2,100
Employment activities	78	4,680	1,870	6,550	3,580	2,610	6,200	12,740
Travel agency, tour operator and other reservation service and related activities	79	210	30	240	720	340	1,060	1,310
Security and investigation activities	80	2,970	950	3,920	310	300	610	4,530
Services to buildings and landscape activities	81	2,940	2,180	5,120	1,150	4,940	6,090	11,210
Office administrative, office support and other business support activities	82	3,340	770	4,110	2,170	1,050	3,220	7,330
Public administration and defence; compulsory social security	84	28,180	2,900	31,080	21,010	6,860	27,870	58,950
Education	85	12,220	5,170	17,380	23,710	33,330	57,040	74,420
Human health activities	86	9,340	3,130	12,470	31,230	29,420	60,640	73,110
Residential care activities	87	1,640	620	2,250	4,760	5,730	10,480	12,740
Social work activities without accommodation	88	3,480	1,180	4,660	13,310	13,780	27,090	31,740
Creative, arts and entertainment activities	90	240	160	400	200	270	470	870
Libraries, archives, museums and other cultural activities	91	490	190	680	660	870	1,530	2,210
Gambling and betting activities	92	680	300	980	790	540	1,330	2,320
Sports activities and amusement and recreation activities	93	2,580	2,200	4,770	1,120	2,270	3,390	8,160
Activities of membership organisations	94	2,250	1,360	3,610	1,700	2,610	4,310	7,920
Repair of computers and personal and household goods	95	210	20	240	50	40	90	330
Other personal service activities	96	510	250	760	2,100	1,960	4,060	4,810
Total		266,350	67,640	333,980	184,620	185,990	370,610	704,590

* Figures may not sum due to rounding

Table 1.4 N.I. Tourism and Leisure Employee Jobs[^] December 2009

	SIC	Male	Female	Total
Accommodation	55	4,300	5,140	9,440
Food and beverage service activities	56*	12,800	16,230	29,040
Travel agency, tour operator and other reservation service and related activities	79	240	1,060	1,310
Libraries, archives, museums and other cultural activities	91	680	1,530	2,210
Gambling and betting activities	92	980	1,330	2,320
Sports activities and amusement and recreation activities	93	4,770	3,390	8,160
Total		23,780	28,690	52,470

[^] Figures are rounded to the nearest 10 and may not sum due to rounding

* Excluding event catering and other food service activities

Public Sector Data

4

Data are NOT adjusted for seasonality unless otherwise stated

Table 1.5 N.I. Public Sector Employee Jobs December 2009

	Male	Female	Total
NI CENTRAL GOVERNMENT	38,981	77,118	116,099
Office of the First and Deputy First Minister	180	232	412
Department of Agriculture and Rural Development (DARD)	2,438	1,501	3,939
Department for Culture, Arts and Leisure (DCAL)	143	143	286
Department of Enterprise, Trade and Investment (DETI)	321	328	649
Department of Education (DE)	253	398	651
Department of Environment (DOE)	1,509	1,421	2,930
Department of Finance and Personnel (DFP)	1,984	1,764	3,748
Department for Employment and Learning (DEL)	658	1,360	2,018
Department of Regional Development (DRD)	1,961	597	2,558
Department for Social Development (DSD)	3,316	4,691	8,007
Department of Health, Social Services and Public Safety (DHSSPS)	417	429	846
Total of 11 Government Departments (Northern Ireland Civil Service)	13,180	12,864	26,044
Fire Service	2,047	239	2,286
NI Audit Office	75	68	143
Northern Ireland Assembly	273	185	458
Northern Ireland Office	833	1,399	2,232
Parliamentary Commissioner for Administration & Complaints	8	16	24
Prison Service	1,528	455	1,983
Police Service of Northern Ireland	7,209	3,698	10,907
NHS Trusts	13,372	57,818	71,190
British Broadcasting Corporation (BBC)	420	345	765
Assets Recovery Agency	36	31	67
BODIES UNDER AEGIS OF NI CENTRAL GOVERNMENT	18,958	56,952	80,951
Office of the First and Deputy First Minister	107	181	288
Department of Agriculture and Rural Development (DARD)	30	40	70
Department for Culture, Arts and Leisure (DCAL)	366	456	822
Department of Enterprise, Trade and Investment (DETI)	384	551	935
Department of Education (DE)	188	337	525
Department of Finance and Personnel (DFP)	20	34	54
Department for Employment and Learning (DEL)	421	421	842
Department of Regional Development (DRD)	1,138	243	1,381
Department of Health & Social Services and Public Safety (DHSSPS)	873	1,504	2,377
Department for Social Development (DSD)	1,671	1,666	3,337
Northern Ireland Office	348	542	890
Teaching Staff, Non-Teaching Staff & Education and Library Boards	14,957	54,473	69,430
UK CENTRAL GOVERNMENT	2,683	2,951	5,634
LOCAL GOVERNMENT (District Councils)	6,906	4,755	11,661
PUBLIC CORPORATIONS	8,532	2,844	11,376
NI Based	4,721	2,131	6,852
UK Based	3,811	713	4,524
Total	76,060	144,620	225,721

Unadjusted and Seasonally Adjusted Series

5

Data are NOT adjusted for seasonality unless otherwise stated

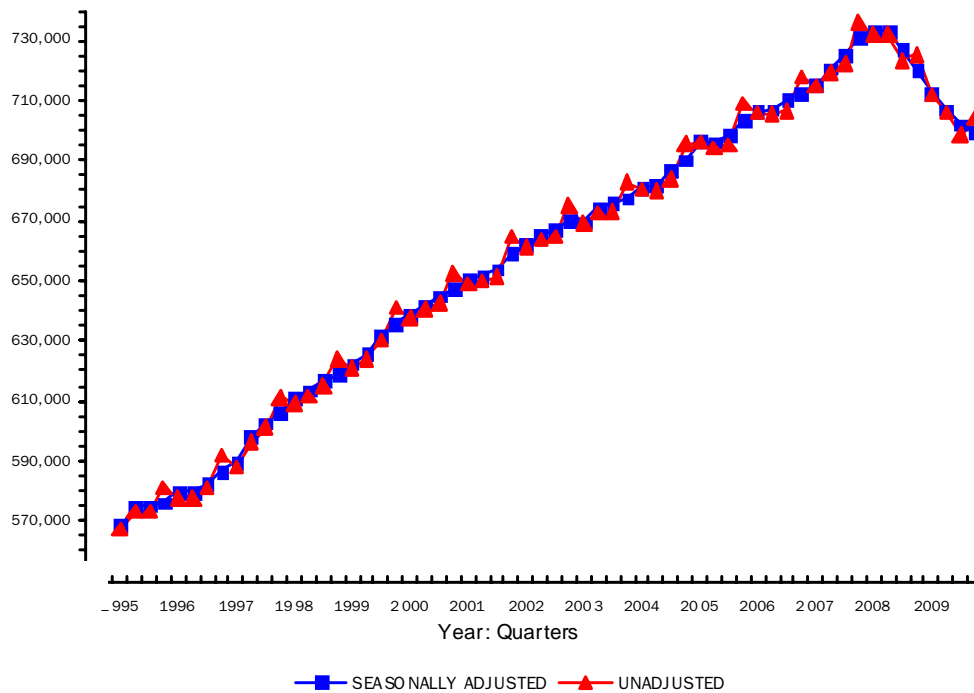
Table 1.6 N.I. Employee Jobs by Broad Industry Sector

Unadjusted & Seasonally Adjusted 1994 – 2009

		Unadjusted					Seasonally Adjusted				
		Manuf.	Const.	Serv.	Other	All	Manuf.	Const.	Serv.	Other	All
1994	Mar	97,520	24,270	405,450	26,890	554,130	97,940	24,330	406,560	26,890	555,720
	Jun	98,420	24,140	408,100	26,280	556,940	98,750	24,130	409,180	26,280	558,340
	Sep	99,810	24,480	409,320	26,280	559,890	99,460	24,270	411,730	26,280	561,730
	Dec	100,320	24,350	420,720	26,130	571,530	99,910	24,490	416,140	26,130	566,680
1995	Mar	99,550	24,360	417,120	26,090	567,110	100,000	24,450	418,150	26,090	568,680
	Jun	101,220	24,230	421,640	26,340	573,420	101,530	24,210	422,840	26,340	574,930
	Sep	101,600	24,120	421,170	26,460	573,340	101,240	23,910	423,520	26,460	575,130
	Dec	101,960	23,770	429,270	25,990	580,990	101,540	23,880	424,690	25,990	576,090
1996	Mar	101,850	23,580	426,610	25,850	577,880	102,400	23,770	427,540	25,850	579,560
	Jun	101,490	23,180	427,730	25,250	577,640	101,780	23,270	429,380	25,250	579,680
	Sep	102,470	23,390	429,870	25,290	581,020	102,080	23,140	431,920	25,290	582,430
	Dec	103,630	23,570	439,380	25,240	591,810	103,180	23,530	434,750	25,240	586,690
1997	Mar	103,380	23,380	436,190	25,110	588,050	103,930	23,560	437,120	25,110	589,720
	Jun	104,730	27,850	438,500	25,020	596,100	105,020	27,950	440,120	25,020	598,120
	Sep	105,330	28,510	442,170	25,090	601,090	104,950	28,260	444,250	25,090	602,560
	Dec	105,050	29,090	452,830	24,350	611,330	104,610	29,040	448,210	24,350	606,210
1998	Mar	104,050	29,500	451,270	24,280	609,110	104,580	29,670	452,190	24,280	610,720
	Jun	104,120	29,940	453,530	23,950	611,530	104,390	30,060	455,100	23,950	613,490
	Sep	105,270	30,390	455,720	23,880	615,270	104,930	30,180	457,900	23,880	616,890
	Dec	104,660	30,730	464,860	23,740	623,990	104,220	30,660	460,210	23,740	618,820
1999	Mar	102,680	30,960	463,510	23,710	620,870	103,160	31,110	464,420	23,710	622,410
	Jun	102,540	31,700	466,440	23,320	624,000	102,800	31,840	467,920	23,320	625,880
	Sep	103,080	33,510	470,270	23,270	630,120	102,800	33,320	472,620	23,270	632,010
	Dec	103,070	34,360	480,250	23,390	641,070	102,640	34,260	475,510	23,390	635,800
2000	Mar	101,880	34,540	477,710	23,350	637,480	102,320	34,660	478,630	23,350	638,960
	Jun	100,910	34,940	480,910	23,620	640,390	101,140	35,080	482,270	23,620	642,110
	Sep	101,140	35,690	482,340	23,580	642,750	100,900	35,560	484,920	23,580	644,960
	Dec	101,210	35,950	491,970	23,370	652,500	100,830	35,830	487,120	23,370	647,150
2001	Mar	99,990	36,250	489,520	23,140	648,900	100,350	36,350	490,410	23,140	650,250
	Jun	98,900	36,250	492,610	22,270	650,030	99,130	36,370	493,890	22,270	651,660
	Sep	97,360	36,530	495,230	22,310	651,420	97,150	36,450	498,020	22,310	653,920
	Dec	96,250	37,150	508,880	22,390	664,660	95,910	37,030	503,970	22,390	659,310
2002	Mar	94,860	36,990	506,920	22,270	661,040	95,150	37,070	507,650	22,270	662,150
	Jun	94,510	36,740	510,490	21,890	663,630	94,740	36,830	511,770	21,890	665,230
	Sep	93,620	36,720	512,350	21,920	664,600	93,400	36,680	515,390	21,920	667,390
	Dec	92,590	36,310	524,490	21,870	675,260	92,350	36,200	519,520	21,870	669,930
2003	Mar	90,560	35,860	520,610	21,900	668,930	90,770	35,940	521,090	21,900	669,700
	Jun	88,990	36,360	524,810	22,440	672,610	89,250	36,410	526,210	22,440	674,310
	Sep	88,970	36,440	525,110	22,380	672,910	88,710	36,430	528,340	22,380	675,870
	Dec	87,940	36,750	535,520	22,640	682,850	87,770	36,630	530,510	22,640	677,550

		Unadjusted					Seasonally Adjusted				
		Manuf.	Const.	Serv.	Other	All	Manuf.	Const.	Serv.	Other	All
2004	Mar	87,110	37,100	533,700	22,610	680,530	87,300	37,190	533,950	22,610	681,050
	Jun	86,080	37,180	534,340	22,290	679,900	86,340	37,200	535,800	22,290	681,640
	Sep	86,230	37,270	537,950	22,480	683,930	85,920	37,300	541,360	22,480	687,060
	Dec	85,580	37,550	549,750	22,770	695,660	85,480	37,410	544,700	22,770	690,350
2005	Mar	84,970	37,770	550,930	22,430	696,090	85,130	37,860	551,020	22,430	696,440
	Jun	84,080	38,750	550,400	21,130	694,350	84,330	38,760	551,900	21,130	696,110
	Sep	84,520	39,310	550,270	21,310	695,420	84,180	39,350	553,800	21,310	698,650
	Dec	83,830	41,150	562,530	21,390	708,890	83,770	40,970	557,470	21,390	703,600
2006	Mar	83,730	41,790	559,080	21,390	705,990	83,890	41,920	559,140	21,390	706,350
	Jun	83,550	42,300	558,750	20,830	705,440	83,760	42,310	560,130	20,830	707,030
	Sep	84,210	42,690	559,000	20,910	706,820	83,890	42,740	562,670	20,910	710,210
	Dec	84,040	43,140	569,820	20,990	717,990	84,010	42,920	564,730	20,990	712,650
2007	Mar	83,490	43,460	566,810	21,050	714,820	83,650	43,630	566,960	21,050	715,290
	Jun	84,070	44,710	569,910	20,890	719,590	84,240	44,730	571,100	20,890	720,960
	Sep	84,280	45,320	571,390	21,070	722,060	83,990	45,350	575,130	21,070	725,540
	Dec (R)	83,790	46,310	584,830	21,320	736,260	83,760	46,070	579,740	21,320	730,890
2008	Mar (R)	83,550	45,420	581,930	21,250	732,150	83,710	45,630	582,250	21,250	732,850
	Jun (R)	83,570	44,470	582,660	21,440	732,140	83,700	44,490	583,570	21,440	733,210
	Sep (R)	82,700	43,140	576,150	21,490	723,490	82,450	43,150	579,970	21,490	727,070
	Dec (R)	80,330	41,450	582,600	21,120	725,500	80,290	41,190	577,540	21,120	720,150
2009	Mar (R)	77,800	38,940	574,190	20,950	711,880	77,960	39,180	574,640	20,950	712,730
	Jun (R)	75,300	37,560	572,530	20,830	706,220	75,420	37,580	573,260	20,830	707,100
	Sep (R)	74,060	36,040	567,780	20,740	698,620	73,840	36,020	571,600	20,740	702,200
	Dec (P)	73,760	34,580	575,470	20,780	704,590	73,720	34,320	570,490	20,780	699,310

Fig 1.4 N.I. Employee Jobs 1995-2009
Unadjusted & Seasonally Adjusted



Special Feature

6

Data are NOT adjusted for seasonality unless otherwise stated

Focus on Manufacturing Employee Jobs

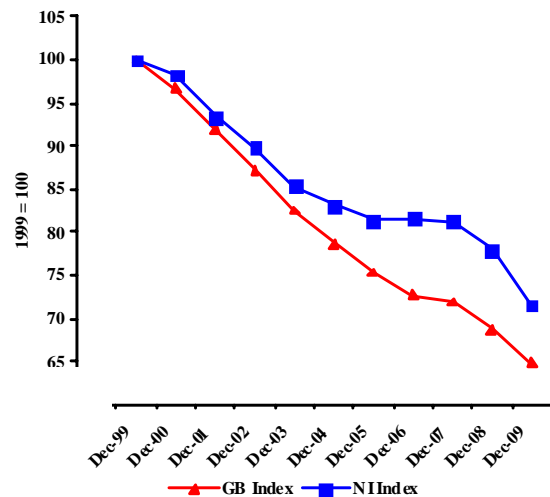
Figure 1.5 shows Northern Ireland and Great Britain's manufacturing jobs, indexed to 1999. It illustrates how the level of jobs in the manufacturing sector in both NI and GB has followed a broadly similar trend over the past 10 years.

NI manufacturing jobs recorded a marked decline between 1999 and 2005, with the figure for 2005 falling to 81% of the 1999 figure. Manufacturing employee jobs in NI have been fairly stable between 2005 and 2007, with the 2007 figure remaining at 81% of the 1999 level. However manufacturing jobs have fallen again and at 2009 were at 72% of their 1999 level.

Manufacturing jobs in GB have been in sharp decline from 1999 and the 2009 estimate stands at only 65% of the 1999 level.

Table 1.7 below highlights the changes that have occurred in the structure of Northern Ireland manufacturing jobs between 1999-2004 and 2004-2009.

Fig 1.5 Manufacturing Jobs for NI & GB Indexed (December of Each Year)*



*GB figures for 2009 refer to September.

Table 1.7 Changes in the structure of Manufacturing Jobs (NI)

	Manufacturing Subsection	Dec-99	Dec-04	Dec-09	Change 1999-2004	Change 2004-2009
10	Manufacture of food products	17,550	17,220	17,090	-330	-130
11 / 12	Manufacture of beverages and tobacco products	2,500	2,090	1,830	-410	-260
13	Manufacture of textiles	7,260	3,810	1,420	-3,450	-2,390
14	Manufacture of wearing apparel	10,970	2,040	890	-8,930	-1,160
15	Manufacture of leather and related products	390	80	70	-310	0
16	Manufacture of wood and of products of wood and cork, except furniture; manufacture of articles of straw and plaiting materials	2,890	3,470	2,860	590	-610
17	Manufacture of paper and paper products	2,260	1,780	1,680	-480	-100
18	Printing and reproduction of recorded media	1,900	1,850	1,590	-50	-270
19	Manufacture of coke and refined petroleum products	70	40	40	-20	0
20	Manufacture of chemicals and chemical products	1,850	1,770	1,860	-90	90
21	Manufacture of basic pharmaceutical products and pharmaceutical preparations	1,050	1,200	1,590	150	400
22	Manufacture of rubber and plastic products	6,950	7,270	5,990	320	-1,280
23	Manufacture of other non-metallic mineral products	5,360	5,860	4,850	500	-1,010
24	Manufacture of basic metals	340	520	390	180	-130
25	Manufacture of fabricated metal products, except machinery and equipment	6,440	7,270	6,660	830	-610
26	Manufacture of computer, electronic and optical products	8,150	5,290	3,670	-2,860	-1,630
27	Manufacture of electrical equipment	4,230	4,100	3,530	-130	-560
28	Manufacture of machinery and equipment n.e.c.	4,950	5,080	4,490	130	-590
29	Manufacture of motor vehicles, trailers and semi-trailers	4,360	3,570	2,610	-790	-960
30	Manufacture of other transport equipment	8,740	6,940	6,670	-1,800	-270
31	Manufacture of furniture	3,090	2,630	2,650	-460	20
32	Other manufacturing	1,470	1,410	990	-70	-420
33	Repair and installation of machinery and equipment	290	310	350	20	40
C	All Manufacturing	103,070	85,580	73,760	-17,480	-11,830

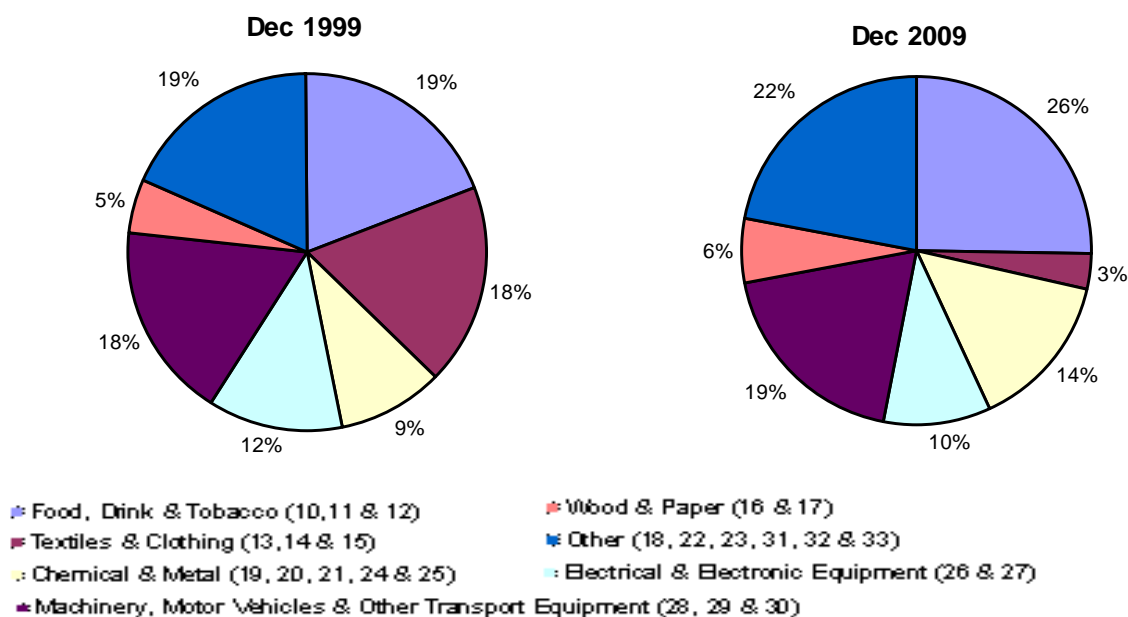
During 1999-2004, manufacturing jobs decreased by 17,480, with 15 of the 23 manufacturing subsections recording a decrease. The largest decrease occurred in the Manufacture of Wearing Apparel, which recorded 8,930 fewer jobs. Other significant decreases were recorded in the Manufacture of Textiles (-3,450), in the Manufacture of computer, electronic and optical products (-2,860 jobs), in Manufacture of other transport equipment (-1,800), in Manufacture of motor vehicles, trailers and semi-trailers (-790 jobs) and in the Manufacture of paper and paper products (-480). However, these decreases were partially offset by increases in the Manufacture of fabricated metal products, except machinery and equipment (+830) in Manufacture of wood and of products of wood and cork, except furniture; manufacture of articles of straw and plaiting materials (+590) and in Manufacture of other non-metallic mineral products (+500).

During 2004–2009 the number of manufacturing jobs fell by 11,830 (-13.8%), with decreases in occurring in 19 of the 23 manufacturing subsections. The Manufacture of Textiles recorded job losses of 2,390, while the number of employee jobs in the Manufacture of computer, electronic and optical products fell by 1,630. There were also fewer jobs recorded in the Manufacture of rubber and plastic products (-1,280), in the Manufacture of wearing apparel (-1,160), in Manufacture of other non-metallic mineral products (-1,010) and in the Manufacture of motor vehicles, trailers and semi-trailers (-960).

Figure 1.6 below shows the structure of manufacturing jobs in Northern Ireland by broad manufacturing group at December 1999 and December 2009. It illustrates how the decline in the manufacture of textiles and clothing has impacted on the structure of Northern Ireland manufacturing jobs.

In 1999, 18.1% of manufacturing jobs were located in the Textiles and Clothing industry but by 2009 this had fallen to 3.2%. Also, in 1999, Manufacturing jobs in Northern Ireland were evenly split across 4 areas (Food, Drink & Tobacco, Textiles and Clothing, Machinery, Motor Vehicles and Other Transport Equipment and also Other Manufacturing.) In 2009, this split shifted to show more than 1 in 4 manufacturing jobs are in Food, Drink & Tobacco, and more than 1 in 5 are in Other Manufacturing.

Fig 1.6 Manufacturing in Northern Ireland by Broad Manufacturing Group



Please note. Numbers in brackets refer to SIC 2007 Classification Codes.

Notes To Editors

7

Note 1

Estimates of the number of employee jobs are obtained from the Quarterly Employment Survey (QES). The QES covers all public sector bodies, all private sector firms with 25 or more employees and a sample of the remainder. The sample size is such that estimates of total employee jobs should be accurate to within +/- 1% of the Census of Employment total. The survey collects information on numbers of persons in full-time and part-time employment. It should be noted that the survey counts the number of jobs rather than the number of persons with jobs. For example, a person holding both a full-time job and a part-time job, or someone with two part-time jobs, will be counted twice.

The QES is a voluntary survey of employers in Northern Ireland and results from it are collated into industry classes using the 2007 Standard Industrial Classification (SIC07). As a result, there is no breach of confidentiality.

Note 2

It is normal practice for Quarterly Employment Survey estimates to be revised. All quarters back to the latest published Census of Employment (currently Q4 2007 onwards) are provisional and subject to revision in light of (a) late responses to surveys and administrative sources, (b) where cross survey congruence checks provide more accurate data and (c) there are revisions to seasonal adjustment factors which are re-estimated every quarter. A common pitfall in interpreting series is that expectations of accuracy and reliability in early estimates are often too high. Revisions are an inevitable consequence of the trade off between timelines and accuracy. Early estimates are based on incomplete data.

Very few statistical revisions arise as a result of 'errors' in the popular sense of the word. All estimates, by definition, are subject to statistical 'error' but in this context the word refers to the uncertainty inherent in any process or calculation that uses sampling, estimation or modelling. Most revisions reflect either the adoption of new statistical techniques, or the incorporation of new information, which allows the statistical error of previous statements to be reduced. Only rarely are there avoidable 'errors' such as human or system failures, and such mistakes are made quite clear when they do occur.

A QES Revisions policy and tables including summary information on the size and direction of revisions for the Quarterly Employment Survey are available under the following link:

http://www.detini.gov.uk/deti-stats-index/stats-surveys/stats-qes/revisions_to_qes_estimates.htm

Note 3

The quarterly survey covers all Industrial Sections apart from Agriculture. Overall employment (i.e. employees and the self-employed) estimates for the agricultural sector are provided, on an annual basis, from the Department of Agriculture and Rural Development's (DARD) Farm Census. Self-employed agriculture workers are defined as including full-time farmers and partners on all agricultural businesses. Agriculture employees include all workers on agricultural businesses other than (a) part-time farmers and partners and (b) farmers' spouses. They include full-time, part-time and casual workers, both paid and unpaid.

Note 4

Public sector jobs comprise Central Government (including Bodies under the aegis of Central Government), Local Government and Public Corporations. An announcement in April 1993 transferred National Health Service Trusts from 'Bodies under the aegis of Central Government' to 'Public Corporations'. A subsequent announcement by the Public Sector Classification Committee (PSCC) in July 2003 stated that all NHS Trusts should retrospectively be reclassified to Central Government. In addition, following advice from PSCC, Northern Ireland Housing Executive employees were reclassified from SIC 75 to SIC 70 in December 2006. This change applies to each quarter from Quarter 1 2004 onwards. From 1st April 2007, The Water Service became a Government owned company known as "Northern Ireland Water". As a result its employees have been transferred from "NI Central Government" to "Bodies under the Aegis of NI Central Government".

Note 5

A seasonally adjusted employment series provides a better indication of underlying trends in employment. This series is available on a consistent basis from June 1978 onwards and figures by main industrial sector from 1994 onwards are shown in Table 1.6.

Note 6

Information on employee jobs at a sub Northern Ireland level (e.g. District Council Area (DCA), Parliamentary Constituency Area (PCA), Ward Level) and at the 5-digit SIC03 level are available from the Northern Ireland Census of Employment. Details of the Census of Employment results are available from Statistics Research Branch Tel: (028) 9052 9379 or on our Internet website <http://www.detini.gov.uk/deti-stats-index.htm>

Note 7

QES employee jobs estimates feed into UK wide workforce jobs figures. These in turn are used as the denominator for regional productivity measures. As part of the NI programme for government, a public sector agreement (PSA) target has been set for Northern Ireland to halve the private sector productivity gap with the UK (excluding the Greater South East) by 2015. See following link:

<http://www.pfgbudgetni.gov.uk/finalpfg.pdf> (p10).

Details of progress towards this target can be found at: www.pfgbudgetni.gov.uk/pfg_delivery_report_q4_08_09-final_-_pdf_version-5.pdf