

# Quarterly Employment Survey

## 5

### Seasonally Adjusted

The March 2009 seasonally adjusted employee jobs figure stands at 715,050.

This represents a seasonally adjusted decrease of 0.9% (or 6,220 jobs) from the revised December 2008 estimate of 721,270.

Over the quarter seasonally adjusted employee jobs decreased in the Service Sector by 0.5% (2,770 jobs) while employee jobs in the Construction Sector fell by 3.7% (1,520 jobs) and the number of employee jobs in the Manufacturing Sector fell by 2.2% (1,790 jobs),

### Unadjusted

The March 2009 seasonally unadjusted figure stands at 713,920.

This represents a decrease of 1.7% (or 12,680 jobs) from December 2008 and a decrease of 2.6% (19,220 jobs) in the past year.

Over the year, March 2008 to March 2009, the unadjusted employee jobs figure for Construction decreased by 12.9% (5,800 jobs), Manufacturing employee jobs decreased by 5.7% (4,740 jobs) while employee jobs in the Service Sector decreased by 1.4% (8,230 jobs).

### Manufacturing Employee Jobs

The level of jobs in the Manufacturing sector in both NI and GB has declined significantly over the past 10 years.

NI manufacturing jobs recorded a marked decline between 1999 and 2006, with the figure for 2006 falling to 82% of the 1999 figure. Manufacturing employee jobs in NI were fairly stable between 2005 and 2008, with the 2008 figure remaining at 81% of the 1999 level. However manufacturing jobs have fallen again in 2009 to 76% of their 1999 level.

Manufacturing jobs in GB have been in sharp decline from 1999 and the 2009 estimate stands at 68% of the 1999 level.

### Changes in the Structure of Manufacturing Jobs (NI)

Over the period 1999-2009, Manufacturing jobs in NI decreased by 24,280, with 17 of the 24 manufacturing divisions recording a decrease. The largest decrease occurred in the Manufacture of Wearing Apparel, with a fall of 11,530 jobs. There were 5,970 fewer jobs in the Manufacture of Textiles, 2,700 fewer in the Manufacture of Computer, Electronic and Optical Products, 1,080 fewer in the Manufacture of Other Transport Equipment and 920 fewer in the Manufacture of Motor Vehicles, Trailers and Semi-Trailers.

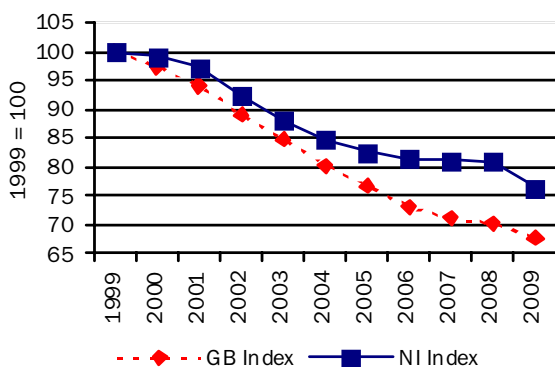
However these decreases were somewhat offset by an increase in the Manufacture of Fabricated Metal Products, except Machinery and Equipment (+1,100), in the Manufacture of Basic Pharmaceutical Products And Pharmaceutical Preparations (+320), in the Manufacture of Wood And Of Products Of Wood And Cork, Except Furniture; Manufacture Of Articles Of Straw And Plaiting Materials (+280), in the Manufacture of Electrical Equipment (+220), and in the Repair and Installation Of Machinery And Equipment (+110 jobs).

The large decline in the Manufacture of Textiles and Wearing Apparel sectors has impacted on the structure of Northern Ireland Manufacturing jobs. In 1999 19% of Manufacturing jobs were located in the Textiles and Wearing Apparel sectors; by 2009 this had fallen to 3%.

### Manufacturing jobs for NI & GB

indexed (March of each year)

Figure 11



**Quarterly Employment Survey**  
**Northern Ireland Seasonally Adjusted Employee Jobs\* March 2009**  
**Table 10**

				% change in total	
	Males	Females	All persons	since last quarter	since last year
Manufacturing	61,950	17,020	78,970	-2.2	-5.6
Construction <sup>1</sup>	34,970	4,570	39,550	-3.7	-12.8
Services	228,730	346,890	575,620	-0.5	-1.4
Other <sup>2</sup>	18,260	2,650	20,910	-0.7	-2.1
<b>Total</b>	<b>343,910</b>	<b>371,140</b>	<b>715,050</b>	<b>-0.9</b>	<b>-2.6</b>

<sup>1</sup> Figures for females in the construction industry are not seasonally adjusted

<sup>2</sup> Covers Industry Sections A, B, D and E which have not been seasonally adjusted

\* Figures are rounded to the nearest 10 and may not sum due to rounding

**Northern Ireland Employee Jobs\* - Seasonally Adjusted Series**  
**Table 11**

		Manufacturing	Construction <sup>1</sup>	Services	Other Industries <sup>2</sup>	All Industries
2003	March	90,790	35,940	521,070	21,900	669,690
	June	89,230	36,410	526,200	22,440	674,290
	September	88,710	36,430	528,370	22,380	675,890
	December	87,770	36,640	530,520	22,640	677,560
2004	March	87,320	37,190	533,910	22,610	681,030
	June	86,320	37,200	535,790	22,290	681,610
	September	85,900	37,290	541,410	22,480	687,080
	December	85,490	37,420	544,710	22,770	690,390
2005	March	85,170	37,870	550,960	22,430	696,430
	June	84,290	38,750	551,880	21,130	696,050
	September	84,150	39,330	553,870	21,310	698,660
	December	83,780	40,990	557,470	21,390	703,630
2006	March	83,990	41,940	559,080	21,390	706,400
	June	83,690	42,300	560,120	20,830	706,940
	September	83,820	42,700	562,740	20,910	710,170
	December	84,010	42,970	564,720	20,990	712,690
2007	March	83,850	43,630	566,890	21,050	715,430
	June	84,100	44,720	571,140	20,890	720,860
	September	83,890	45,300	575,170	21,070	725,440
	December	83,400	45,820	580,360	21,450	731,030
2008	March	83,630	45,330	583,750	21,370	734,080
	June	83,270	44,290	585,290	21,560	734,410
	September	81,950	42,850	581,350	21,630	727,770
	December	80,760	41,070	578,380	21,050	721,270
2009	March	78,970	39,550	575,620	20,910	715,050

<sup>1</sup> Figures for females in the construction industry are not seasonally adjusted

<sup>2</sup> Covers Industry Sections A, B, D and E which have not been seasonally adjusted

\* Figures are rounded to the nearest 10 and may not sum due to rounding

## Quarterly Employment Survey (QES) – Sample of data available on website

**The Northern Ireland Quarterly Employment Survey  
Table 12**

Table Name	Description	File Size
5.1	<a href="#">NI Employee Jobs - Seasonally Adjusted March 2009</a>	15.5 KB
5.2	<a href="#">NI Employee Jobs - Seasonally Adjusted 1998 – 2009</a>	15.5 KB
5.3	<a href="#">NI Employee Jobs - Unadjusted 1998 – 2009</a>	15.5 KB
5.4	<a href="#">NI Employee Jobs (Unadjusted) by Industry Section – March 2009</a>	15.5 KB
5.5	<a href="#">NI Public Sector Jobs (Unadjusted) – March 2009</a>	13.5 KB
5.6	<a href="#">NI Employee Jobs by Industry Section (Unadjusted) March 2008, December 2008 and March 2009</a>	15.5 KB
5.7	<a href="#">Self Employment Jobs in NI by Broad Industry Group (June of Each Year)</a>	15.0 KB
5.8	<a href="#">Workforce in Employment 1983 – 2008</a>	15.0 KB
5.9	<a href="#">NI Employee Jobs by 2-digit SIC07 Class – March 2009</a>	31.5 KB

**Other Quarterly Employment Survey Publications available on website  
Table 13**

Publication title	File Size
<a href="#">Quarterly Employment Survey (QES) Supplement - March 2009</a>	493 KB