

# Quarterly Employment Survey

## 5

### Seasonally Adjusted

The December 2008 seasonally adjusted employee jobs figure stands at 710,920.

This represents a seasonally adjusted decrease of 0.8% (or 5,370 jobs) from the revised September 2008 estimate of 716,290.

Over the quarter seasonally adjusted employee jobs decreased in the Service Sector by 0.4% (2,220 jobs) while employee jobs in the Construction Sector fell by 4.2% (1,750 jobs) and the number of employee jobs in the Manufacturing Sector fell by 1.7% (1,440 jobs),

### Unadjusted

The December 2008 seasonally unadjusted figure stands at 714,950.

This represents an increase of 0.2% (or 1,490 jobs) from September 2008 and a decrease of 2.0% (14,400 jobs) in the past year.

Over the year, December 2007 to December 2008, the unadjusted employee jobs figure for Construction decreased by 11.4% (5,090 jobs), Manufacturing employee jobs decreased by 3.5% (3,120 jobs) while employee jobs in the Service Sector decreased by 1.1% (6,290 jobs).

### Manufacturing Employee Jobs

The level of jobs in the Manufacturing sector in both NI and GB has declined significantly over the past 10 years.

NI manufacturing jobs recorded a marked decline between 1998 and 2005, with the figure for 2005 falling to 81% of the 1998 figure. Manufacturing employee jobs in NI have been fairly stable between 2005 and 2007, with the 2007 figure remaining at 83% of the 1998 level. However manufacturing jobs have fallen again in 2008 to 80% of their 1998 level.

Manufacturing jobs in GB have been in sharp decline from 1998 and the 2008 estimate stands at only 68% of the 1998 level.

### Changes in the Structure of Manufacturing Jobs (NI)

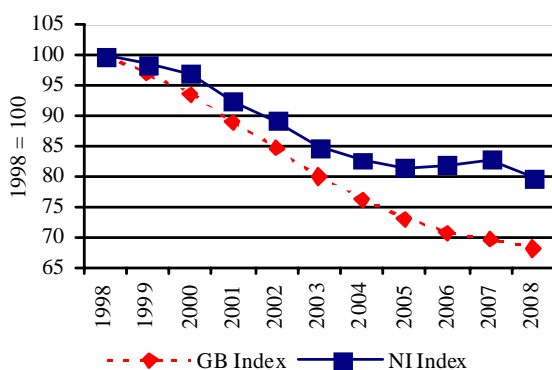
Over the period 1998-2008, Manufacturing jobs in NI decreased by 21,670, with 10 of the 14 manufacturing subsections recording a decrease. The largest decrease occurred in the Manufacture of Wearing Apparel, with a fall of 10,230 jobs. There were 7,990 fewer jobs in the Manufacture of Textiles, 3,540 fewer jobs in the Manufacture of Radio, Television and Communication equipment, 1,550 fewer in the Manufacture of Other Transport Equipment and 1,110 fewer in the Manufacture of Motor Vehicles, Trailers and Semi-Trailers.

However these decreases were somewhat offset by an increase in the Manufacture of Fabricated Metal Products (+1,560), Recycling (+1,150), the Manufacture of Electrical Machinery (+880), and the Manufacture of Wood Products (+850 jobs).

The large decline in the Manufacture of Textiles and Wearing Apparel sectors has impacted on the structure of Northern Ireland Manufacturing jobs. In 1998 19% of Manufacturing jobs were located in the Textiles and Wearing Apparel sectors; by 2008 this had fallen to 3%.

Manufacturing jobs for NI & GB indexed (December of each year)

Figure 11



**Quarterly Employment Survey**  
**Northern Ireland Seasonally Adjusted Employee Jobs\* December 2008**  
**Table 10**

				% change in total	
	Males	Females	All persons	since last quarter	since last year
Manufacturing	66,820	18,770	85,590	-1.7	-3.5
Construction <sup>1</sup>	35,330	4,310	39,630	-4.2	-11.4
Services	227,500	341,050	568,550	-0.4	-1.1
Other <sup>2</sup>	14,820	2,320	17,140	0.2	0.6
<b>Total</b>	<b>344,460</b>	<b>366,450</b>	<b>710,920</b>	<b>-0.8</b>	<b>-2.0</b>

<sup>1</sup> Figures for females in the construction industry are not seasonally adjusted

<sup>2</sup> Covers Industry Sections A, B, C and E which have not been seasonally adjusted

\* Figures are rounded to the nearest 10 and may not sum due to rounding

**Northern Ireland Employee Jobs\* - Seasonally Adjusted Series**  
**Table 11**

			Manufacturing	Construction <sup>1</sup>	Services	Other Industries <sup>2</sup>	All Industries
2003	March		93,750	35,460	521,520	19,100	669,840
	June		92,140	36,020	526,620	19,510	674,290
	September		91,690	35,970	528,430	19,480	675,580
	December		90,660	36,220	531,410	19,550	677,850
2004	March		90,180	36,330	535,180	19,530	681,220
	June		89,310	36,290	536,980	21,550	684,130
	September		88,880	36,250	542,080	19,150	686,370
	December		88,480	36,500	546,460	19,450	690,880
2005	March		88,230	36,970	552,220	19,120	696,540
	June		87,560	37,830	553,170	17,730	696,290
	September		87,340	38,240	554,420	17,760	697,770
	December	(R)	86,970	39,990	559,380	17,780	704,130
2006	March	(R)	87,180	40,900	560,620	17,810	706,510
	June	(R)	87,010	41,220	561,290	17,190	706,720
	September	(R)	87,180	41,690	563,510	17,230	709,610
	December	(R)	87,250	42,050	566,940	17,270	713,520
2007	March	(R)	86,950	42,590	568,510	17,350	715,380
	June	(R)	87,470	43,670	572,260	17,110	720,510
	September	(R)	87,400	44,340	576,070	17,080	724,890
	December	(R)	88,690	44,720	574,680	17,030	725,120
2008	March	(R)	88,690	44,180	575,690	16,990	725,550
	June	(R)	88,370	43,040	576,040	17,100	724,550
	September	(R)	87,030	41,380	570,780	17,100	716,290
	December	(P)	85,590	39,630	568,550	17,140	710,920

<sup>1</sup> Figures for females in the construction industry are not seasonally adjusted

P= Provisional R= Revised

<sup>2</sup> Covers Industry Sections A, B, C and E which have not been seasonally adjusted

\* Figures are rounded to the nearest 10 and may not sum due to rounding

## Quarterly Employment Survey (QES) – Sample of data available on website

**The Northern Ireland Quarterly Employment Survey  
Table 12**

Table Name	Description	File Size
5.1	<a href="#">NI Employee Jobs - Seasonally Adjusted December 2008</a>	15.5 KB
5.2	<a href="#">NI Employee Jobs - Seasonally Adjusted 1998 – 2008</a>	15.5 KB
5.3	<a href="#">NI Employee Jobs - Unadjusted 1998 – 2008</a>	15.5 KB
5.4	<a href="#">NI Employee Jobs (Unadjusted) by Industry Section - December 2008</a>	15.5 KB
5.5	<a href="#">NI Public Sector Jobs (Unadjusted) – December 2008</a>	13.5 KB
5.6	<a href="#">NI Employee Jobs by Industry Section (Unadjusted) December 2007, September 2008 and December 2008</a>	15.5 KB
5.7	<a href="#">Self Employment Jobs in NI by Broad Industry Group (June of Each Year)</a>	15.0 KB
5.8	<a href="#">Workforce in Employment 1983 - 2008</a>	15.0 KB
5.9	<a href="#">NI Employee Jobs by 2-digit SIC03 Class - December 2008</a>	31.5 KB

**Other Quarterly Employment Survey Publications available on website  
Table 13**

Publication title	File Size
<a href="#">Quarterly Employment Survey (QES) Supplement - December 2008</a>	493 KB