

Quarterly Employment Survey

5

Seasonally Adjusted

The September 2008 seasonally adjusted employee jobs figure stands at 718,370.

This represents a seasonally adjusted decrease of 1.0% (or 6,990 jobs) from the revised June 2008 estimate of 725,370.

Over the quarter seasonally adjusted employee jobs decreased in the Service Sector by 0.7% (4,280 jobs) while employee jobs in the Construction Sector fell by 3.7% (1,600 jobs) and the number of employee jobs in the Manufacturing Sector fell by 1.3% (1,120 jobs),

Unadjusted

The September 2008 seasonally unadjusted figure stands at 714,680.

This represents a decrease of 1.4% (or 9,810 jobs) from June 2008 and a decrease of 0.6% (4,560 jobs) in the past year.

Over the year, September 2007 to September 2008, the unadjusted employee jobs figure for Construction decreased by 7.3% (3,270 jobs), Manufacturing employee jobs decreased by 1.2% (1,020 jobs) while employee jobs in the Service Sector decreased by 0.1% (450 jobs).

Manufacturing Employee Jobs

The level of jobs in the Manufacturing sector in both NI and GB has declined significantly over the past 10 years.

NI manufacturing jobs recorded a marked decline between 1998 and 2005, with the figure for 2005 falling to 81% of the 1998 figure. Manufacturing employee jobs in NI have been fairly stable between 2005 and 2008, with the 2008 figure remaining at 81% of the 1998 level.

Manufacturing jobs in GB have been in sharp decline from 1998 and the 2008 estimate stands at only 68% of the 1998 level. The rate of decline in Manufacturing employee jobs has slowed in 2007 and 2008.

Changes in the Structure of Manufacturing Jobs (NI)

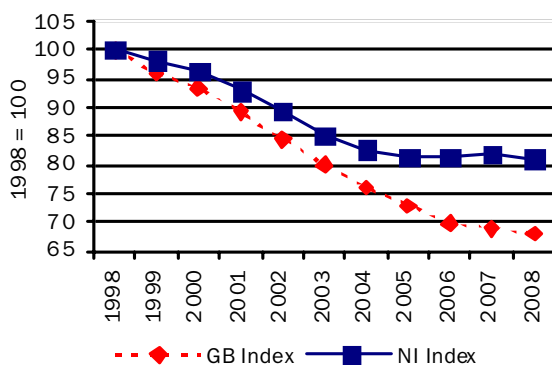
Over the period 1998-2008, Manufacturing jobs in NI decreased by 20,420, with 9 of the 14 manufacturing subsections recording a decrease. The largest decrease occurred in the Manufacture of Wearing Apparel, with a fall of 10,610 jobs. There were 8,360 fewer jobs in the Manufacture of Textiles, 3,640 fewer jobs in the Manufacture of Radio, Television and Communication equipment, 1,660 fewer in the Manufacture of Other Transport Equipment and 1,240 fewer in the Manufacture of Food Products, Beverages and Tobacco.

However these decreases were somewhat offset by an increase in the Manufacture of Fabricated Metal Products (+1,990), Recycling (+1,300), the Manufacture of other Non-metallic Mineral Products (+1,140 jobs), and the Manufacture of Electrical Machinery (+980).

The large decline in the Manufacture of Textiles and Wearing Apparel sectors has impacted on the structure of Northern Ireland Manufacturing jobs. In 1998 over 20% of Manufacturing jobs were located in the Textiles and Wearing Apparel sectors; by 2008 this had fallen to 3%.

Manufacturing jobs for NI & GB indexed (September of each year)

Figure 11



Quarterly Employment Survey
Northern Ireland Seasonally Adjusted Employee Jobs* September 2008
Table 10

				% change in total	
	Males	Females	All persons	since last quarter	since last year
Manufacturing	68,040	19,310	87,350	-1.3	-1.1
Construction ¹	37,020	4,510	41,530	-3.7	-7.3
Services	228,910	343,490	572,400	-0.7	-0.1
Other ²	14,830	2,270	17,100	0.0	1.1
Total	348,790	369,580	718,370	-1.0	-0.6

¹ Figures for females in the construction industry are not seasonally adjusted

² Covers Industry Sections A, B, C and E which have not been seasonally adjusted

* Figures are rounded to the nearest 10 and may not sum due to rounding

Northern Ireland Employee Jobs* - Seasonally Adjusted Series
Table 11

			Manufacturing	Construction ¹	Services	Other Industries ²	All Industries
2003	March		93,750	35,460	521,520	19,100	669,840
	June		92,140	36,020	526,620	19,510	674,290
	September		91,690	35,970	528,430	19,480	675,580
	December		90,660	36,220	531,410	19,550	677,850
2004	March		90,180	36,330	535,180	19,530	681,220
	June		89,310	36,290	536,980	21,550	684,130
	September		88,880	36,250	542,080	19,150	686,370
	December		88,480	36,500	546,460	19,450	690,880
2005	March		88,230	36,970	552,220	19,120	696,540
	June		87,560	37,830	553,170	17,730	696,290
	September		87,340	38,240	554,420	17,760	697,770
	December	(R)	87,080	40,180	558,630	17,760	703,650
2006	March	(R)	87,330	41,060	559,440	17,770	705,610
	June	(R)	87,300	41,470	559,940	17,130	705,840
	September	(R)	87,650	41,950	562,030	17,150	708,770
	December	(R)	87,730	42,410	564,030	17,170	711,340
2007	March	(R)	87,480	42,890	565,640	17,220	713,240
	June	(R)	88,150	44,100	569,700	16,970	718,910
	September	(R)	88,310	44,800	572,760	16,920	722,790
	December	(R)	88,630	44,830	574,140	17,030	724,620
2008	March	(R)	88,640	44,180	575,510	16,990	725,310
	June	(R)	88,460	43,130	576,680	17,100	725,370
	September	(P)	87,350	41,530	572,400	17,100	718,370

¹ Figures for females in the construction industry are not seasonally adjusted

² Covers Industry Sections A, B, C and E which have not been seasonally adjusted

* Figures are rounded to the nearest 10 and may not sum due to rounding

P= Provisional R= Revised

Quarterly Employment Survey (QES) – Sample of data available on website

**The Northern Ireland Quarterly Employment Survey
Table 12**

Table Name	Description	File Size
5.1	NI Employee Jobs - Seasonally Adjusted September 2008	15.5 KB
5.2	NI Employee Jobs - Seasonally Adjusted 1998 – 2008	15.5 KB
5.3	NI Employee Jobs - Unadjusted 1998 – 2008	15.5 KB
5.4	NI Employee Jobs (Unadjusted) by Industry Section - September 2008	15.5 KB
5.5	NI Public Sector Jobs (Unadjusted) – September 2008	13.5 KB
5.6	NI Employee Jobs by Industry Section (Unadjusted) September 2007, June 2008 and September 2008	15.5 KB
5.7	Self Employment Jobs in NI by Broad Industry Group (June of Each Year)	15.0 KB
5.8	Workforce in Employment 1983 - 2008	15.0 KB
5.9	NI Employee Jobs by 2-digit SIC03 Class - September 2008	31.5 KB

**Other Quarterly Employment Survey Publications available on website
Table 13**

Publication title	File Size
Quarterly Employment Survey (QES) Supplement - September 2008	493 KB