

# Quarterly Employment Survey

## 5

### Seasonally Adjusted

The June 2008 seasonally adjusted employee jobs figure stands at 722,320, the highest seasonally adjusted figure on record.

This represents a seasonally adjusted increase of 0.1% (or 480 jobs) from the revised March 2008 estimate of 721,840.

Over the quarter seasonally adjusted employee jobs increased in the Service Sector by 0.3% (1,510 jobs) while employee jobs in the Construction Sector fell by 2.0% (900 jobs). The number of employee jobs in the Manufacturing Sector remained relatively static (-20 jobs),

### Unadjusted

The June 2008 seasonally unadjusted figure stands at 720,850, the highest unadjusted figure for June on record.

This represents a decrease of less than 0.1% (or 360 jobs) from March 2008 and an increase of 0.7% (4,670 jobs) in the past year.

Over the year, June 2007 to June 2008, the unadjusted employee jobs figure for the Service Sector increased by 0.9% (5,320 jobs) and Manufacturing employee jobs increased by 0.3% (230 jobs) while Construction employee jobs decreased by 1.8% (800 jobs).

### Manufacturing Employee Jobs

The level of jobs in the Manufacturing sector in both NI and GB has declined significantly over the past 10 years.

NI manufacturing jobs recorded only a small fall between 1998 and 2000, with the figure for 2000 at 97% of the 1998 figure. However, from 2001 onwards the decline in NI manufacturing jobs has been more marked and, in particular, the substantial falls between 2001 and 2005 have resulted in the 2008 figure being only 83% of the 1998 level. Manufacturing employee jobs in NI have been fairly stable between 2005 and 2008.

Manufacturing jobs in GB have been in sharp decline from 1998 and the 2008 estimate stands at only 68% of the 1998 level. Manufacturing employee jobs in GB have remained relatively stable between 2007 and 2008.

### Changes in the Structure of Manufacturing Jobs (NI)

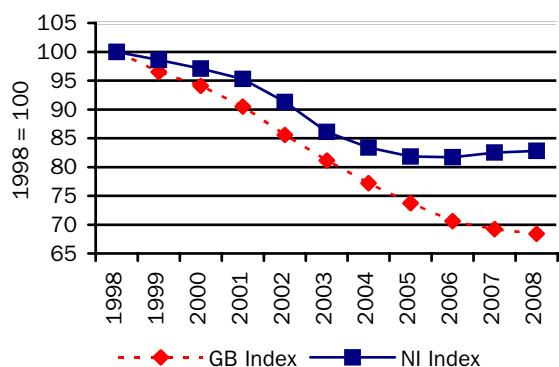
Over the period 1998-2008, Manufacturing jobs in NI decreased by 18,390, with 8 of the 14 manufacturing subsections recording a decrease. The largest decrease occurred in the Manufacture of Wearing Apparel, with a fall of 10,650 jobs. There were 8,690 fewer jobs in the Manufacture of Textiles, 2,940 fewer jobs in the Manufacture of Radio, Television and Communication equipment, 1,710 fewer in the Manufacture of Other Transport Equipment and 1,040 fewer in the Manufacture of Food Products, Beverages and Tobacco.

However these decreases were somewhat offset by an increase in the Manufacture of Fabricated Metal Products (+2,280), the Manufacture of other Non-metallic Mineral Products (+1,400 jobs), the Manufacture of Wood Products (+1,350) and Recycling (+1,290).

The large decline in the Manufacture of Textiles and Wearing Apparel sectors has impacted on the structure of Northern Ireland Manufacturing jobs. In 1998 over 20% of Manufacturing jobs were located in the Textiles and Wearing Apparel sectors; by 2008 this had fallen to 3%.

**Manufacturing jobs for NI & GB indexed (June of each year)**

**Figure 11**



**Quarterly Employment Survey**  
**Northern Ireland Seasonally Adjusted Employee Jobs\* June 2008**  
**Table 10**

				% change in total	
	Males	Females	All persons	since last quarter	since last year
Manufacturing	69,060	19,450	88,510	0.0	0.2
Construction <sup>1</sup>	38,630	4,700	43,320	-2.0	-1.8
Services	229,350	344,320	573,670	0.3	0.9
Other <sup>2</sup>	14,720	2,090	16,810	-0.6	-0.4
<b>Total</b>	<b>351,760</b>	<b>370,560</b>	<b>722,320</b>	<b>0.1</b>	<b>0.6</b>

<sup>1</sup> Figures for females in the construction industry are not seasonally adjusted

<sup>2</sup> Covers Industry Sections A, B, C and E which have not been seasonally adjusted

\* Figures are rounded to the nearest 10 and may not sum due to rounding

**Northern Ireland Employee Jobs\* - Seasonally Adjusted Series**  
**Table 11**

			Manufacturing	Construction <sup>1</sup>	Services	Other Industries <sup>2</sup>	All Industries
2002	March		98,040	36,630	508,000	19,520	662,200
	June		97,680	36,410	512,070	19,090	665,260
	September		96,390	36,220	515,480	19,070	667,160
	December		95,240	35,760	519,910	19,120	670,040
2003	March		93,750	35,460	521,520	19,100	669,840
	June		92,140	36,020	526,620	19,510	674,290
	September		91,690	35,970	528,430	19,480	675,580
	December		90,660	36,220	531,410	19,550	677,850
2004	March		90,180	36,330	535,180	19,530	681,220
	June		89,310	36,290	536,980	21,550	684,130
	September		88,880	36,250	542,080	19,150	686,370
	December		88,480	36,500	546,460	19,450	690,880
2005	March		88,230	36,970	552,220	19,120	696,540
	June		87,560	37,830	553,170	17,730	696,290
	September		87,340	38,240	554,420	17,760	697,770
	December	(R)	87,190	40,080	557,540	17,730	702,550
2006	March	(R)	87,400	41,030	558,660	17,740	704,820
	June	(R)	87,480	41,510	559,290	17,040	705,330
	September	(R)	87,600	41,970	560,850	17,060	707,480
	December	(R)	87,660	42,380	562,840	17,090	709,970
2007	March	(R)	87,690	42,950	564,020	17,130	711,800
	June	(R)	88,310	44,130	568,510	16,890	717,830
	September	(R)	88,100	44,650	569,780	16,900	719,430
	December	(R)	88,510	44,640	571,020	16,960	721,130
2008	March	(R)	88,530	44,230	572,170	16,920	721,840
	June	(P)	88,510	43,320	573,670	16,810	722,320

<sup>1</sup> Figures for females in the construction industry are not seasonally adjusted

P= Provisional R= Revised

<sup>2</sup> Covers Industry Sections A, B, C and E which have not been seasonally adjusted

\* Figures are rounded to the nearest 10 and may not sum due to rounding

## Quarterly Employment Survey (QES) – Sample of data available on website

### The Northern Ireland Quarterly Employment Survey Table 12

Table Name	Description	File Size
5.1	<a href="#">NI Employee Jobs - Seasonally Adjusted June 2008</a>	15.5 KB
5.2	<a href="#">NI Employee Jobs - Seasonally Adjusted 1998 – 2008</a>	15.5 KB
5.3	<a href="#">NI Employee Jobs - Unadjusted 1998 – 2008</a>	15.5 KB
5.4	<a href="#">NI Employee Jobs (Unadjusted) by Industry Section - June 2008</a>	15.5 KB
5.5	<a href="#">NI Public Sector Jobs (Unadjusted) – June 2008</a>	13.5 KB
5.6	<a href="#">NI Employee Jobs by Industry Section (Unadjusted) June 2007, March 2008 and June 2008</a>	15.5 KB
5.7	<a href="#">Self Employment Jobs in NI by Broad Industry Group (June of Each Year)</a>	15.0 KB
5.8	<a href="#">Workforce in Employment 1983 - 2008</a>	15.0 KB
5.9	<a href="#">NI Employee Jobs by 2-digit SIC03 Class - June 2008</a>	31.5 KB

### Other Quarterly Employment Survey Publications available on website Table 13

Publication title	File Size
<a href="#">Quarterly Employment Survey (QES) Supplement - June 2008</a>	493 KB