

Quarterly Employment Survey

5

Seasonally Adjusted

The March 2008 seasonally adjusted employee jobs figure stands at 722,120, the highest seasonally adjusted figure on record.

This represents a seasonally adjusted increase of 0.2% (or 1,380 jobs) from the revised December 2007 estimate of 720,750.

Over the quarter seasonally adjusted employee jobs increased in the Service Sector by 0.3% (1,570 jobs) and in the Manufacturing Sector by 0.1% (70 jobs), while employee jobs in the Construction Sector fell by 0.5% (230 jobs).

Unadjusted

The March 2008 seasonally unadjusted figure stands at 721,720, the highest unadjusted figure for March on record.

This represents a decrease of 0.6% (or 4,040 jobs) from December 2007 and an increase of 1.5% (10,550 jobs) in the past year.

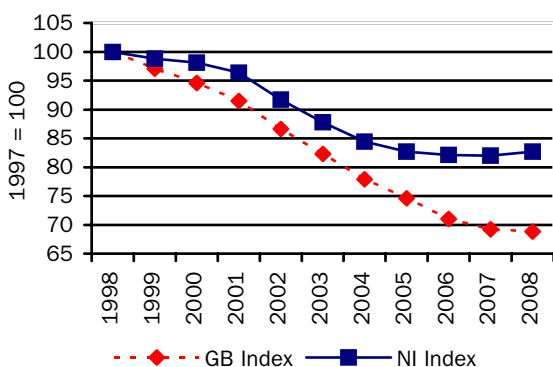
Over the year, March 2007 to March 2008, the unadjusted employee jobs figure for the Service Sector increased by 1.5% (8,640 jobs) and Construction employee jobs increased by 3.3% (1,400 jobs) while Manufacturing employee jobs increased by 0.8% (730 jobs).

Manufacturing Employee Jobs

The level of jobs in the Manufacturing sector in both NI and GB has declined significantly over the past 10 years.

Manufacturing jobs for NI & GB indexed (December of each year)

Figure 11



NI manufacturing jobs recorded only a small fall between 1998 and 2000, with the figure for 2000 at 98% of the 1998 figure. However, from 2001 onwards the decline in NI manufacturing jobs has been more marked and, in particular, the substantial falls between 2001 and 2005 have resulted in the 2008 figure being only 83% of the 1998 level. Manufacturing employee jobs in NI have been fairly stable between 2005 and 2008.

Manufacturing jobs in GB have been in sharp decline from 1998 and the 2008 estimate stands at only 69% of the 1998 level. Manufacturing employee jobs in GB have remained stable between 2007 and 2008.

Changes in the Structure of Manufacturing Jobs (NI)

Over the period 1998-2008, Manufacturing jobs in NI decreased by 18,410, with 8 of the 14 manufacturing subsections recording a decrease. The largest decrease occurred in the Manufacture of Wearing Apparel, with a fall of 10,880 jobs. There were 8,880 fewer jobs in the Manufacture of Textiles, 3,200 fewer jobs in the Manufacture of Radio, Television and Communication equipment, 1,650 fewer in the Manufacture of Other Transport Equipment and 1,260 fewer in the Manufacture of Food Products, Beverages and Tobacco.

However these decreases were somewhat offset by an increase in the Manufacture of Fabricated Metal Products (+2,230), the Manufacture of other Non-metallic Mineral Products (+1,350 jobs), the Manufacture of Electrical Machinery (+1,320), Recycling (+1,260) and the Manufacture of Wood Products (+1,230).

The large decline in the Manufacture of Textiles and Wearing Apparel sectors has impacted on the structure of Northern Ireland Manufacturing jobs. In 1998 over 20% of Manufacturing jobs were located in the Textiles and Wearing Apparel sectors; by 2008 this had fallen to 3%.

Quarterly Employment Survey
Northern Ireland Seasonally Adjusted Employee Jobs* March 2008
Table 10

				% change in total	
	Males	Females	All persons	since last quarter	since last year
Manufacturing	68,740	19,560	88,290	0.1	0.9
Construction ¹	39,710	4,770	44,480	-0.5	3.3
Services	228,830	343,560	572,430	0.3	1.5
Other ²	14,830	2,090	16,920	-0.2	-1.2
Total	352,110	370,010	722,120	0.2	1.5

¹ Figures for females in the construction industry are not seasonally adjusted

² Covers Industry Sections A, B, C and E which have not been seasonally adjusted

* Figures are rounded to the nearest 10 and may not sum due to rounding

Northern Ireland Employee Jobs* - Seasonally Adjusted Series
Table 11

			Manufacturing	Construction ¹	Services	Other Industries ²	All Industries
2002	March		98,040	36,630	508,000	19,520	662,200
	June		97,680	36,410	512,070	19,090	665,260
	September		96,390	36,220	515,480	19,070	667,160
	December		95,240	35,760	519,910	19,120	670,040
2003	March		93,750	35,460	521,520	19,100	669,840
	June		92,140	36,020	526,620	19,510	674,290
	September		91,690	35,970	528,430	19,480	675,580
	December		90,660	36,220	531,410	19,550	677,850
2004	March		90,180	36,330	535,180	19,530	681,220
	June		89,310	36,290	536,980	21,550	684,130
	September		88,880	36,250	542,080	19,150	686,370
	December		88,480	36,500	546,460	19,450	690,880
2005	March		88,230	36,970	552,220	19,120	696,540
	June		87,560	37,830	553,170	17,730	696,290
	September		87,340	38,240	554,420	17,760	697,770
	December	(R)	87,380	40,070	557,170	17,730	702,350
2006	March	(R)	87,550	41,110	557,780	17,740	704,190
	June	(R)	87,660	41,510	558,330	17,040	704,540
	September	(R)	87,780	41,940	559,860	17,060	706,640
	December	(R)	87,850	42,400	561,840	17,090	709,170
2007	March	(R)	87,540	43,060	563,750	17,130	711,490
	June	(R)	88,450	44,100	567,640	16,890	717,070
	September	(R)	88,060	44,620	569,000	16,890	718,560
	December	(R)	88,220	44,710	570,860	16,960	720,750
2008	March	(P)	88,290	44,480	572,430	16,920	722,120

¹ Figures for females in the construction industry are not seasonally adjusted

P= Provisional R= Revised

² Covers Industry Sections A, B, C and E which have not been seasonally adjusted

Quarterly Employment Survey (QES) – Sample of data available on website

The Northern Ireland Quarterly Employment Survey Table 12

Table Name	Description	File Size
5.1	NI Employee Jobs - Seasonally Adjusted March 2008	15.5 KB
5.2	NI Employee Jobs - Seasonally Adjusted 1998 – 2008	15.5 KB
5.3	NI Employee Jobs - Unadjusted 1998 – 2008	15.5 KB
5.4	NI Employee Jobs (Unadjusted) by Industry Section - March 2008	15.5 KB
5.5	NI Public Sector Jobs (Unadjusted) – March 2008	13.5 KB
5.6	NI Employee Jobs by Industry Section (Unadjusted) March 2007, December 2007 and March 2008	15.5 KB
5.7	Self Employment Jobs in NI by Broad Industry Group (June of Each Year)	15.0 KB
5.8	Workforce in Employment 1983 - 2008	15.0 KB
5.9	NI Employee Jobs by 2-digit SIC03 Class –March 2008	31.5 KB

Other Quarterly Employment Survey Publications available on website Table 13

Publication title	File Size
Quarterly Employment Survey (QES) Supplement - March 2008	493 KB