

# Quarterly Employment Survey

## 5

### Seasonally Adjusted

The December 2007 seasonally adjusted employee jobs figure stands at 722,070, the highest seasonally adjusted figure on record.

This represents a seasonally adjusted increase of 0.3% (or 1,900 jobs) from the revised September 2007 estimate of 720,170.

Over the quarter seasonally adjusted employee jobs increased in the Service Sector by 0.4% (2,030 jobs) and in the Manufacturing Sector by 0.2% (220 jobs), while employee jobs in the Construction Sector fell by 0.9% (420 jobs).

### Unadjusted

The December 2007 seasonally unadjusted figure stands at 727,090, the highest unadjusted figure on record.

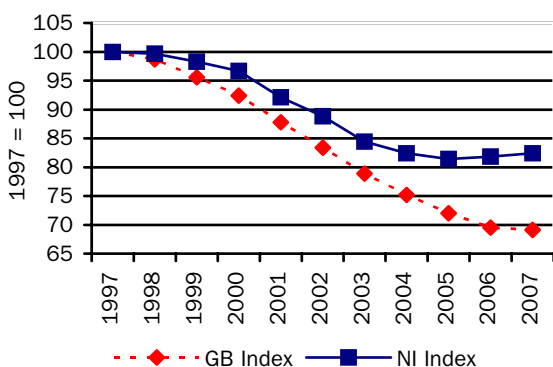
This represents an increase of 1.4% (or 10,020 jobs) from September 2007 and an increase of 1.9% (13,460 jobs) in the past year.

Over the year, December 2006 to December 2007, the unadjusted employee jobs figure for the Service Sector increased by 1.9% (10,850 jobs) and Construction employee jobs increased by 5.0% (2,110 jobs) while Manufacturing employee jobs increased by 0.7% (620 jobs).

### Manufacturing Employee Jobs

The level of jobs in the Manufacturing sector in both NI and GB has declined significantly over the past 10 years.

**Manufacturing jobs for NI & GB indexed (December of each year)**  
**Figure 11**



NI manufacturing jobs recorded only a small fall between 1997 and 1999, with the figure for 1999 at 98% of the 1997 figure. However, from 2000 onwards the decline in NI manufacturing jobs has been more marked and, in particular, the substantial falls between 2000 and 2005 have resulted in the 2007 figure being only 82% of the 1997 level. Manufacturing employee jobs in NI have been fairly stable between 2005 and 2007.

Manufacturing jobs in GB remained relatively constant between 1997 and 1998. Since then GB manufacturing jobs have been in sharp decline and the 2007 estimate stands at only 69% of the 1997 level.

### Changes in the Structure of Manufacturing Jobs (NI)

Over the period 1997-2007, Manufacturing jobs in NI decreased by 18,920, with 8 of the 14 manufacturing subsections recording a decrease. The largest decrease occurred in the Manufacture of Wearing Apparel, with a fall of 11,420 jobs. There were 8,960 fewer jobs in the Manufacture of Textiles, 3,220 fewer jobs in the Manufacture of Radio, Television and Communication equipment, 1,680 fewer in the Manufacture of Other Transport Equipment and 1,550 fewer in the Manufacture of Food Products, Beverages and Tobacco.

However these decreases were somewhat offset by an increase in the Manufacture of Fabricated Metal Products (+2,260), the Manufacture of other Non-metallic Mineral Products (+1,530 jobs), the Manufacture of Electrical Machinery (+1,420), the Manufacture of Wood Products (+1,200) and Recycling (+1,190).

The large decline in the Manufacture of Textiles and Wearing Apparel sectors has impacted on the structure of Northern Ireland Manufacturing jobs. In 1997 over 20% of Manufacturing jobs were located in the Textiles and Wearing Apparel sectors; by 2007 this had fallen to only 3%.

**Quarterly Employment Survey**  
**Northern Ireland Seasonally Adjusted Employee Jobs\* December 2007**  
**Table 10**

				% change in total	
	Males	Females	All persons	since last quarter	since last year
Manufacturing	68,860	19,620	88,480	0.2	0.7
Construction <sup>1</sup>	39,710	4,800	44,510	-0.9	5.0
Services	229,050	343,060	572,110	0.4	1.9
Other <sup>2</sup>	14,870	2,090	16,970	0.4	-0.7
<b>Total</b>	<b>352,490</b>	<b>369,580</b>	<b>722,070</b>	<b>0.3</b>	<b>1.9</b>

<sup>1</sup> Figures for females in the construction industry are not seasonally adjusted

<sup>2</sup> Covers Industry Sections A, B, C and E which have not been seasonally adjusted

\* Figures are rounded to the nearest 10 and may not sum due to rounding

**Northern Ireland Employee Jobs\* - Seasonally Adjusted Series**  
**Table 11**

			Manufacturing	Construction <sup>1</sup>	Services	Other Industries <sup>2</sup>	All Industries
2002	March		98,040	36,630	508,000	19,520	662,200
	June		97,680	36,410	512,070	19,090	665,260
	September		96,390	36,220	515,480	19,070	667,160
	December		95,240	35,760	519,910	19,120	670,040
2003	March		93,750	35,460	521,520	19,100	669,840
	June		92,140	36,020	526,620	19,510	674,290
	September		91,690	35,970	528,430	19,480	675,580
	December		90,660	36,220	531,410	19,550	677,850
2004	March		90,180	36,330	535,180	19,530	681,220
	June		89,310	36,290	536,980	21,550	684,130
	September		88,880	36,250	542,080	19,150	686,370
	December		88,480	36,500	546,460	19,450	690,880
2005	March		88,230	36,970	552,220	19,120	696,540
	June		87,560	37,830	553,170	17,730	696,290
	September		87,340	38,240	554,420	17,760	697,770
	December	(R)	87,390	40,090	558,140	17,720	703,340
2006	March	(R)	87,630	41,090	558,170	17,740	704,630
	June	(R)	87,710	41,470	558,700	17,040	704,920
	September	(R)	87,830	41,950	560,110	17,060	706,950
	December	(R)	87,870	42,390	561,310	17,090	708,660
2007	March	(R)	87,650	43,070	563,950	17,140	711,800
	June	(R)	88,600	44,180	568,030	16,890	717,710
	September	(R)	88,260	44,930	570,080	16,900	720,170
	December	(P)	88,480	44,510	572,110	16,970	722,070

<sup>1</sup> Figures for females in the construction industry are not seasonally adjusted

<sup>2</sup> Covers Industry Sections A, B, C and E which have not been seasonally adjusted

\* Figures are rounded to the nearest 10 and may not sum due to rounding

P= Provisional R= Revised

## Quarterly Employment Survey (QES) – Sample of data available on website

### The Northern Ireland Quarterly Employment Survey Table 12

Table Name	Description	File Size
5.1	<a href="#">NI Employee Jobs - Seasonally Adjusted December 2007</a>	15.5 KB
5.2	<a href="#">NI Employee Jobs - Seasonally Adjusted 1998 – 2007</a>	15.5 KB
5.3	<a href="#">NI Employee Jobs - Unadjusted 1998 – 2007</a>	15.5 KB
5.4	<a href="#">NI Employee Jobs (Unadjusted) by Industry Section - December 2007</a>	15.5 KB
5.5	<a href="#">NI Public Sector Jobs (Unadjusted) – December 2007</a>	13.5 KB
5.6	<a href="#">NI Employee Jobs by Industry Section (Unadjusted) December 2006, September 2007 and December 2007</a>	15.5 KB
5.7	<a href="#">Self Employment Jobs in NI by Broad Industry Group (June of Each Year)</a>	15.0 KB
5.8	<a href="#">Workforce in Employment 1983 - 2007</a>	15.0 KB
5.9	<a href="#">NI Employee Jobs by 2-digit SIC03 Class –December 2007</a>	31.5 KB

### Other Quarterly Employment Survey Publications available on website Table 13

Publication title	File Size
<a href="#">Quarterly Employment Survey (QES) Supplement - December 2007</a>	493 KB