

Quarterly Employment Survey

5

Seasonally Adjusted

The September 2007 seasonally adjusted employee jobs figure stands at 720,210, the highest seasonally adjusted figure on record.

This represents a seasonally adjusted increase of 0.2% (or 1,450 jobs) from the revised June 2007 estimate of 718,760.

Over the quarter seasonally adjusted employee jobs increased in the Service Sector by 0.2% (1,170 jobs) and in the Construction Sector by 1.4% (640 jobs), while employee jobs in the Manufacturing Sector fell by 0.4% (360 jobs).

Unadjusted

The September 2007 seasonally unadjusted figure stands at 717,210, the highest unadjusted figure on record.

This represents no change from June 2007 and an increase of 1.7% (12,000 jobs) in the past year.

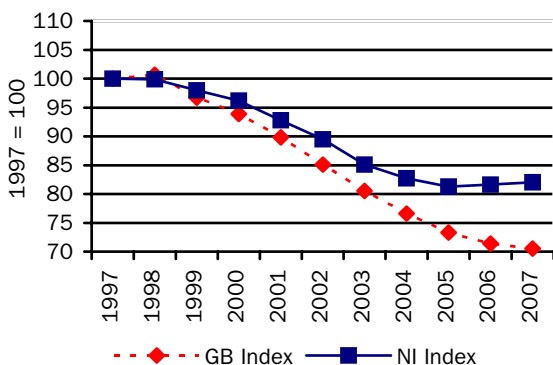
Over the year, September 2006 to September 2007, the unadjusted employee jobs figure for the Service Sector increased by 1.6% (8,850 jobs) and Construction employee jobs increased by 6.8% (2,880 jobs) while Manufacturing employee jobs increased by 0.5% (410 jobs).

Manufacturing Employee Jobs

The level of jobs in the Manufacturing sector in both NI and GB have declined significantly over the past 10 years.

Manufacturing jobs for NI & GB indexed (September of each year)

Figure 11



NI manufacturing jobs recorded only a small fall between 1997 and 1999, with the figure for 1999 at 98% of the 1997 figure. However, from 2000 onwards the decline in NI manufacturing jobs has been more marked and, in particular, the substantial falls between 2000 and 2006 have resulted in the 2007 figure being only 82% of the 1997 level. Manufacturing employee jobs in NI have been fairly stable between 2005 and 2007.

Manufacturing jobs in GB remained relatively constant between 1997 and 1998. Since then GB manufacturing jobs have been in sharp decline and the 2007 estimate stands at only 71% of the 1997 level.

Changes in the Structure of Manufacturing Jobs (NI)

Over the period 1997-2007, Manufacturing jobs in NI decreased by 19,440, with 8 of the 14 manufacturing subsections recording a decrease. The largest decrease occurred in the Manufacture of Wearing Apparel, with a fall of 11,600 jobs. There were 8,880 fewer jobs in the Manufacture of Textiles, 3,030 fewer jobs in the Manufacture of Radio, Television and Communication equipment, 1,800 fewer in the Manufacture of Other Transport Equipment and 1,380 fewer in the Manufacture of Food Products, Beverages and Tobacco.

However these decreases were somewhat offset by an increase in the Manufacture of Fabricated Metal Products (+1,710), the Manufacture of other Non-metallic Mineral Products (+1,590 jobs), the Manufacture of Electrical Machinery (+1,450), the Manufacture of Furniture; Manufacture not elsewhere classified (+1,410) and the Manufacture of Wood Products (+1,310).

The large decline in the Manufacture of Textiles and Wearing Apparel sectors has impacted on the structure of Northern Ireland Manufacturing jobs. In 1997 just over 20% of Manufacturing jobs were located in the Textiles and Wearing Apparel sectors; by 2007 this had fallen to only 4%.

Quarterly Employment Survey

Northern Ireland Seasonally Adjusted Employee Jobs* September 2007

Table 10

				% change in total	
	Males	Females	All persons	since last quarter	since last year
Manufacturing	68,670	19,510	88,180	-0.4	0.5
Construction ¹	40,280	4,810	45,090	1.4	6.8
Services	228,120	341,890	570,010	0.2	1.6
Other ²	14,810	2,120	16,930	0.0	-0.8
Total	351,870	368,340	720,210	0.2	1.7

¹ Figures for females in the construction industry are not seasonally adjusted

² Covers Industry Sections A, B, C and E which have not been seasonally adjusted

* Figures are rounded to the nearest 10 and may not sum due to rounding

Northern Ireland Employee Jobs* - Seasonally Adjusted Series

Table 11

			Manufacturing	Construction ¹	Services	Other Industries ²	All Industries
2002	March		98,040	36,630	508,000	19,520	662,200
	June		97,680	36,410	512,070	19,090	665,260
	September		96,390	36,220	515,480	19,070	667,160
	December		95,240	35,760	519,910	19,120	670,040
2003	March		93,750	35,460	521,520	19,100	669,840
	June		92,140	36,020	526,620	19,510	674,290
	September		91,690	35,970	528,430	19,480	675,580
	December		90,660	36,220	531,410	19,550	677,850
2004	March		90,180	36,330	535,180	19,530	681,220
	June		89,310	36,290	536,980	21,550	684,130
	September		88,880	36,250	542,080	19,150	686,370
	December		88,480	36,500	546,460	19,450	690,880
2005	March		88,230	36,970	552,220	19,120	696,540
	June		87,560	37,830	553,170	17,730	696,290
	September		87,340	38,240	554,420	17,760	697,770
	December	(R)	87,390	40,290	559,250	17,740	704,670
2006	March	(R)	87,630	41,230	558,900	17,750	705,520
	June	(R)	87,660	41,670	559,730	17,050	706,110
	September	(R)	87,750	42,220	561,150	17,070	708,200
	December	(R)	87,870	42,570	561,850	17,100	709,380
2007	March	(R)	87,660	43,270	565,070	17,180	713,170
	June	(R)	88,540	44,450	568,850	16,930	718,760
	September	(P)	88,180	45,090	570,010	16,930	720,210

¹ Figures for females in the construction industry are not seasonally adjusted

P= Provisional R= Revised

² Covers Industry Sections A, B, C and E which have not been seasonally adjusted

* Figures are rounded to the nearest 10 and may not sum due to rounding

Quarterly Employment Survey (QES) – Sample of data available on website

**The Northern Ireland Quarterly Employment Survey
Table 12**

Table Name	Description	File Size
5.1	NI Employee Jobs - Seasonally Adjusted September 2007	15.5 KB
5.2	NI Employee Jobs - Seasonally Adjusted 1998 – 2007	15.5 KB
5.3	NI Employee Jobs - Unadjusted 1998 – 2007	15.5 KB
5.4	NI Employee Jobs (Unadjusted) by Industry Section - September 2007	15.5 KB
5.5	NI Public Sector Jobs (Unadjusted) – September 2007	13.5 KB
5.6	NI Employee Jobs by Industry Section (Unadjusted) September 2006, June 2007 and September 2007	15.5 KB
5.7	Self Employment Jobs in NI by Broad Industry Group (June of Each Year)	15.0 KB
5.8	Workforce Jobs 1983 - 2007	15.0 KB
5.9	NI Employee Jobs by 2-digit SIC03 Class –September 2007	31.5 KB

**Other Quarterly Employment Survey Publications available on website
Table 13**

Publication title	File Size
Quarterly Employment Survey (QES) Supplement - September 2007	493 KB